



## ARCHIVED - Archiving Content

### Archived Content

Information identified as archived is provided for reference, research or recordkeeping purposes. It is not subject to the Government of Canada Web Standards and has not been altered or updated since it was archived. Please contact us to request a format other than those available.

## ARCHIVÉE - Contenu archivé

### Contenu archivé

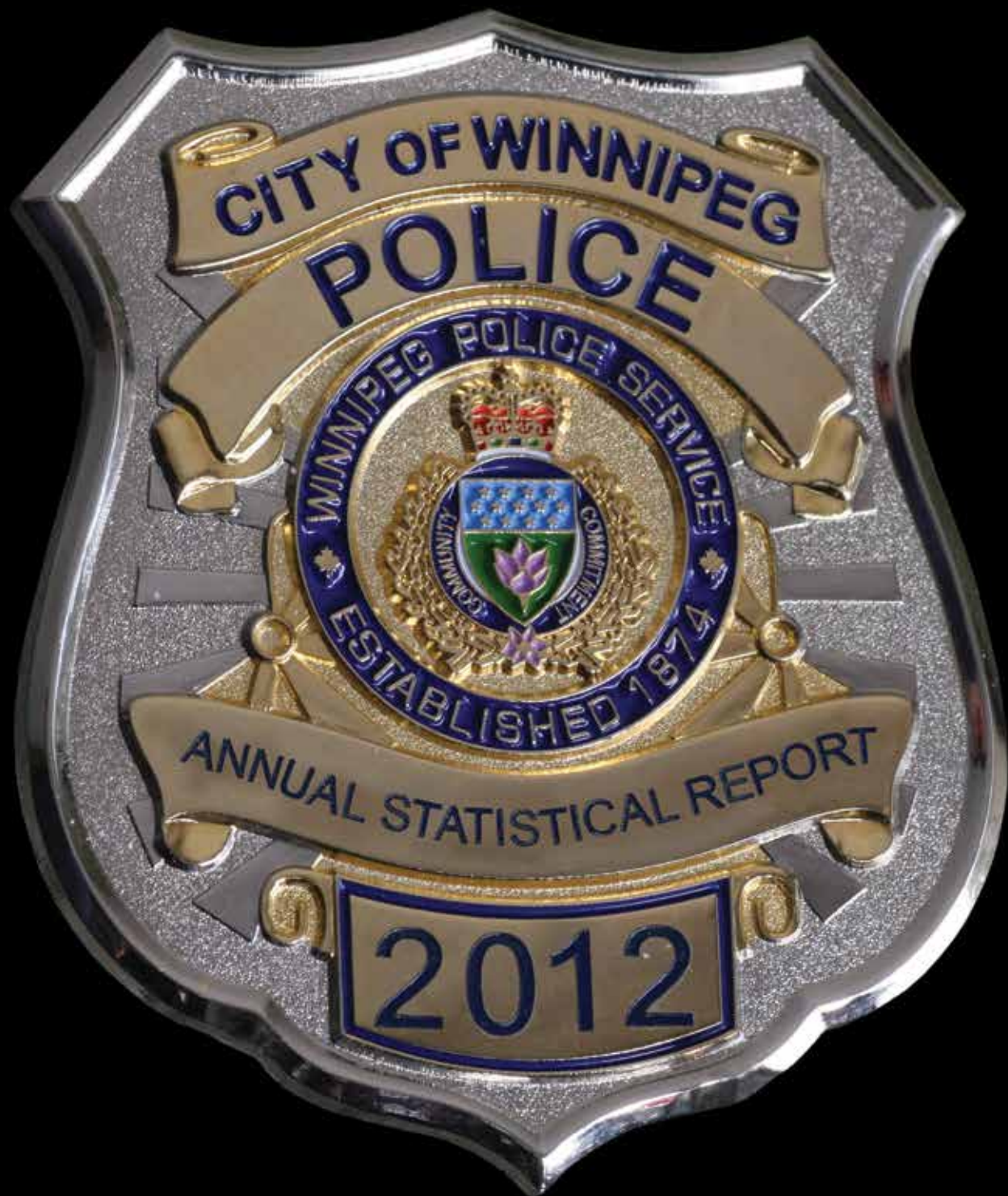
L'information dont il est indiqué qu'elle est archivée est fournie à des fins de référence, de recherche ou de tenue de documents. Elle n'est pas assujettie aux normes Web du gouvernement du Canada et elle n'a pas été modifiée ou mise à jour depuis son archivage. Pour obtenir cette information dans un autre format, veuillez communiquer avec nous.

This document is archival in nature and is intended for those who wish to consult archival documents made available from the collection of Public Safety Canada.

Some of these documents are available in only one official language. Translation, to be provided by Public Safety Canada, is available upon request.

Le présent document a une valeur archivistique et fait partie des documents d'archives rendus disponibles par Sécurité publique Canada à ceux qui souhaitent consulter ces documents issus de sa collection.

Certains de ces documents ne sont disponibles que dans une langue officielle. Sécurité publique Canada fournira une traduction sur demande.



Winnipeg Police Service  
2012 Annual Statistical Report

# VISION, MISSION & VALUES

## VISION

A safer community, built on strong, trusting relationships

## MISSION

As members of the Winnipeg Police Service, we are committed to making Winnipeg safer by:

- Performing our duties with integrity, compassion and respect,
- Building strong, trusting relationships with the community, because we can't do it all alone,
- Enhancing our effectiveness so we can be there when we're needed the most, and
- Finding innovative ways of delivering our services

## SERVICE VALUES

**Integrity** – Acting in an open, honest and trustworthy way in all of our interactions with each other and the public.

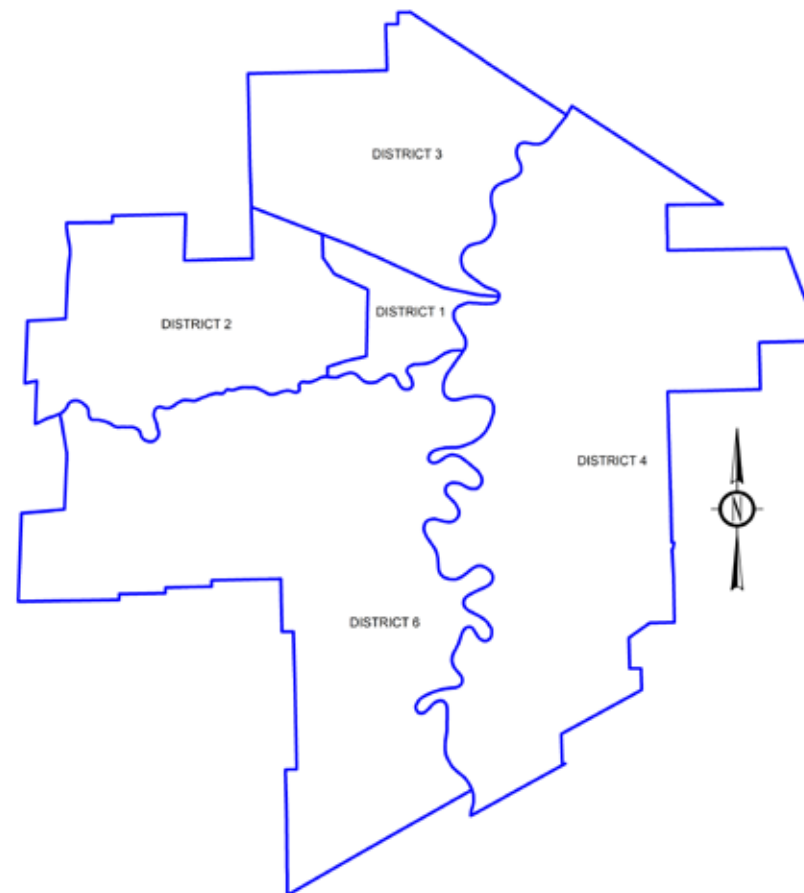
**Respect** – Honouring individuals and diversity, by showing compassion and tolerance to all people.

**Citizen Focus** – Conducting ourselves in a professional manner at all times, showing pride in service and commitment to serve the greater good.

**Accountability** – Making quality, ethical decisions that guide our individual and collective efforts, and accepting responsibility for our actions.

**Courage** – Serving on the street and in leadership roles, being ready to make tough decisions to valiantly protect people and their property.

## Community Service Centre Locations



### DOWNTOWN/District 1

Public Safety Building  
151 Princess St.  
204-986-6246  
Open 24 hours

### WEST/District 2

210 Lyle St.  
204-986-6060

### NORTH/District 3

260 Hartford Ave.  
204-986-6313

### EAST/ District 4

1750 Dugald Rd.  
204-986-6262

1400 Henderson Hwy.  
204-986-7684

### 1086 St. Mary's Rd. 204-986-7686

### SOUTH/District 6

1350 Pembina Hwy.  
204-986-6042

# STATISTICAL SUMMARY

## Policing Per Capita Costs

Population <sup>A</sup> .....	704,799
Police per Residents.....	1:483
Tax Supported Expenses .....	\$225,949,757
Per Capita Cost.....	\$320.59
Physical Area.....	475.2 km <sup>2</sup>

<sup>A</sup> Statistics Canada 2012 population estimate, based on census data.

## Staffing

### Authorized 2012 Complement\*

Chief of Police .....	1
Deputy Chief .....	2
Superintendent .....	4
Inspector .....	23
Staff Sergeant.....	30
Sergeant.....	83
Patrol/Detective Sergeant .....	203
Constable.....	1,096
Total Police Members .....	1,442
Non-sworn/Staff Members .....	440
Auxiliary Cadets.....	76
<b>Total Members .....</b>	<b>1,958</b>

\* Includes externally funded positions:

- 6 police – funded by Manitoba Public Insurance
- 163 police – funded by the Province of Manitoba
- 3 police – funded by the Government of Canada
- 25 police – funded by the Winnipeg Airport Authority
- 2 police – funded by the Government of Canada  
(National Weapons Enforcement Support Team and Community Corrections Officer)
- 11 police – funding shared by Winnipeg Police Service and Winnipeg School Divisions

### Sworn (Actual)

Caucasian .....	1,202
Aboriginal .....	157
Visible Minorities .....	100
<b>Total .....</b>	<b>1,459</b>
Male.....	1,232
Female .....	227
<b>Total.....</b>	<b>1,459</b>

### Civilian (Actual)

Caucasian .....	382
Aboriginal .....	28
Visible Minorities .....	30
<b>Total.....</b>	<b>440</b>
Male .....	91
Female .....	349
<b>Total .....</b>	<b>440</b>

### CADETS

Caucasian .....	62
Aboriginal .....	8
Visible Minorities .....	6
<b>Total .....</b>	<b>76</b>
Male .....	64
Female .....	12
<b>Total .....</b>	<b>76</b>

# CRIMINAL CODE OFFENCES

## Violent Crimes

	Actual <sup>7</sup> 2012	Actual <sup>7</sup> 2011	2011 - 2012 Percent Difference <sup>5</sup>	5-Year Average 2007-2011	2012 Difference over 5-Year Average <sup>5</sup>
Homicide	30	41	-27%	29.8	1%
Criminal Negligence Causing Death	3	4	-25%	4.2	-29%
Attempted Murder	6	5	20%	19.4	-69%
Sexual Assault - Aggravated <sup>2</sup>	2	0	N/C	3.0	-33%
Sexual Assault - with a Weapon <sup>2</sup>	9	11	-18%	15.6	-42%
Sexual Assault - Common <sup>2</sup>	657	710	-8%	637.4	3%
Other Sexual Offences <sup>2, 16</sup>	36	36	0%	37.6	-4%
Assault - Aggravated <sup>2</sup>	99	122	-19%	148.8	-33%
Assault - with Weapon or Causing Bodily Harm <sup>2</sup>	1,365	1,485	-8%	1,864.4	-27%
Assault - Common <sup>2</sup>	2,994	3,079	-3%	3,376.8	-11%
All Assaults against Peace Officer <sup>2</sup>	250	222	13%	276.4	-10%
All Other Assaults <sup>2</sup>	5	10	-50%	13.2	-62%
Firearms Offences (use of / discharge / point)	26	24	8%	27.6	-6%
All Robberies <sup>2</sup>	1,660	1,744	-5%	2,058.4	-19%
Kidnapping / Forcible Confinement <sup>2</sup>	78	100	-22%	102.0	-24%
All Abductions <sup>2</sup>	6	2	200%	11.0	-45%
Extortion <sup>2</sup>	3	7	-57%	6.4	-53%
Criminal Harassment	51	77	-34%	93.0	-45%
Uttering Threats	789	944	-16%	1,277.0	-38%
Threatening / Harassing Phone Calls	46	44	5%	164.0	-72%
Other Violent Crimes <sup>2</sup>	36	31	16%	64.2	-44%
<b>Total</b>	<b>8,151</b>	<b>8,698</b>	<b>-6%</b>	<b>10,230.2</b>	<b>-20%</b>

## Property Crimes

Break & Enter <sup>2</sup>	4,590	4,729	-3%	5,647.4	-19%
Possess Stolen Property	245	262	-7%	379.4	-35%
Motor Vehicle Thefts <sup>2</sup>	2,170	2,266	-4%	5,907.2	-63%
Theft - Over \$5,000 (Non-Motor Vehicle) <sup>2</sup>	218	217	0%	301.8	-28%
Theft - \$5,000 or Under (Non-Motor Vehicle) <sup>2</sup>	10,878	11,054	-2%	14,781.6	-26%
Fraud <sup>2, 11</sup>	1,064	1,026	4%	1,261.4	-16%
Mischief <sup>2</sup>	11,521	12,163	-5%	14,921.4	-23%
Arson <sup>2, 3</sup>	422	460	-8%	343.2	23%
<b>Total</b>	<b>31,108</b>	<b>32,177</b>	<b>-3%</b>	<b>43,543.4</b>	<b>-29%</b>

**NOTE:** The actual counts, the rates, the percent changes, and the clearance rates data for City of Winnipeg crime totals include calculations provided by the Canadian Centre for Justice Statistics (CCJS). Due to CCJS updates, previously reported numbers are subject to change. As a result, data printed in the 2011 Winnipeg Police Service Annual Report will not contain the updated data, and should not be compared with the data presented herein.

# CRIMINAL CODE OFFENCES

2012 Rate per 100,000 Population	2011 Rate per 100,000 Population	Percent Rate Change over 2011 <sup>5</sup>	5-Year Rate Average	Percent Rate Change over 5-year Average <sup>5</sup>	2012 Clearance Rate
4.3	5.9	-27%	4.4	-2%	87%
0.4	0.6	-33%	0.6	-33%	100%
0.9	0.7	29%	2.9	-69%	100%
0.3	0.0	N/C	0.5	-40%	100%
1.3	1.6	-19%	2.3	-43%	80%
93.2	102.6	-9%	94.5	-1%	48%
5.1	5.2	-2%	2.2	132%	41%
14.0	17.6	-20%	22.1	-37%	97%
193.7	214.7	-10%	276.6	-30%	62%
424.8	445.1	-5%	500.9	-15%	71%
35.5	32.1	11%	40.9	-13%	100%
0.7	1.4	-50%	2.0	-65%	100%
3.7	3.5	6%	4.1	-10%	82%
235.5	252.1	-7%	305.5	-23%	33%
11.1	14.5	-23%	15.1	-26%	94%
0.9	0.3	200%	1.6	-44%	29%
0.4	1.0	-60%	0.9	-56%	75%
7.2	11.1	-35%	13.8	-48%	78%
111.9	136.5	-18%	189.5	-41%	71%
6.5	6.4	2%	24.6	-74%	35%
5.1	4.5	13%	9.6	-47%	98%
<b>1,156.5</b>	<b>1,257.4</b>	<b>-8%</b>	<b>1514.6</b>	<b>-24%</b>	<b>62%</b>

650.8	683.6	-5%	839.7	-22%	13%
34.8	37.9	-8%	56.5	-38%	100%
307.9	327.6	-6%	885.0	-65%	8%
30.9	31.4	-2%	44.9	-31%	13%
1,543.4	1,597.9	-3%	2,196.8	-30%	20%
151.0	148.3	2%	187.5	-19%	45%
1,634.7	1,758.2	-7%	2,219.2	-26%	7%
59.9	66.5	-10%	50.7	18%	10%
<b>4,413.3</b>	<b>4,651.4</b>	<b>-5%</b>	<b>6,480.3</b>	<b>-32%</b>	<b>15%</b>

# CRIMINAL CODE OFFENCES

## Other Crimes

	Actual <sup>7</sup> 2012	Actual <sup>7</sup> 2011	2011 - 2012 Percent Difference <sup>5</sup>	5-Year Average 2007-2011	2012 Difference over 5-Year Average <sup>5</sup>
Counterfeiting <sup>2</sup>	57	113	-50%	123.2	-54%
Weapons Violations	446	494	-10%	441.0	1%
Child Pornography <sup>2</sup>	13	8	63%	21.6	-40%
Prostitution	143	151	-5%	134.6	6%
Disturb the Peace	34	36	-6%	19.0	79%
Administration of Justice Violations <sup>2, 13</sup>	4,442	4,099	8%	3,730.6	19%
Other Criminal Code Violations <sup>2, 13</sup>	174	162	7%	263.6	-34%
<b>Total</b>	<b>5,309</b>	<b>5,063</b>	<b>5%</b>	<b>4,733.6</b>	<b>12%</b>

## Traffic Offences

Impaired Driving / Drive over .08 mg	442	542	-18%	560.8	-21%
Other Criminal Code Traffic Violations <sup>14</sup>	216	155	39%	179.6	20%
<b>Total Traffic Offences</b>	<b>658</b>	<b>697</b>	<b>-6%</b>	<b>740.4</b>	<b>-11%</b>

## CDSA<sup>2</sup>

Possession - Cannabis	178	226	-21%	217.2	-18%
Possession - Cocaine	75	82	-9%	94.4	-21%
Possession - Other	53	62	-15%	67.8	-22%
Trafficking / Production / Distribution - Cannabis <sup>2</sup>	188	190	-1%	235.2	-20%
Trafficking / Production / Distribution - Cocaine <sup>2</sup>	244	233	5%	331.2	-26%
Trafficking / Production / Distribution - Other <sup>2</sup>	68	76	-11%	74.8	-9%
<b>Total CDSA</b>	<b>806</b>	<b>869</b>	<b>-7%</b>	<b>1,020.6</b>	<b>-21%</b>

## YCJA<sup>12</sup>

YCJA <sup>12</sup>	296	233	27%	154.0	92%
--------------------	-----	-----	-----	-------	-----

## Other Federal Statutes<sup>2</sup>

Other Federal Statutes <sup>2</sup>	0	2	-100%	1.4	-100%
-------------------------------------	---	---	-------	-----	-------

## Grand Total

<b>Grand Total</b>	<b>46,328</b>	<b>47,739</b>	<b>-3%</b>	<b>60,423.6</b>	<b>-23%</b>
--------------------	---------------	---------------	------------	-----------------	-------------

# CRIMINAL CODE OFFENCES

2012 Rate per 100,000 Population	2011 Rate per 100,000 Population	Percent Rate Change over 2011 <sup>5</sup>	5-Year Rate Average	Percent Rate Change over 5-year Average <sup>5</sup>	2012 Clearance Rate
8.1	16.3	-50%	18.2	-55%	100%
63.3	71.4	-11%	65.3	-3%	95%
1.8	1.2	50%	3.2	-44%	53%
20.3	21.8	-7%	20.0	2%	100%
4.8	5.2	-8%	2.8	71%	76%
630.3	592.5	6%	553.0	14%	100%
24.7	23.4	6%	39.3	-37%	70%
<b>753.3</b>	<b>731.8</b>	<b>3%</b>	<b>701.8</b>	<b>7%</b>	<b>98%</b>

62.7	78.3	-20%	83.2	-25%	100%
30.6	22.4	37%	26.7	15%	100%
<b>93.3</b>	<b>100.7</b>	<b>-7%</b>	<b>109.9</b>	<b>-15%</b>	<b>100%</b>

25.3	32.7	-23%	32.2	-21%	95%
10.6	11.9	-11%	14.0	-24%	99%
7.5	9.0	-17%	10.1	-26%	85%
26.7	27.5	-3%	34.9	-23%	91%
34.6	33.7	3%	49.3	-30%	98%
9.6	11.0	-13%	11.1	-14%	86%
<b>114.3</b>	<b>125.8</b>	<b>-9%</b>	<b>151.6</b>	<b>-25%</b>	<b>94%</b>

42.0	33.7	25%	22.7	85%	100%
------	------	-----	------	-----	------

0.0	0.3	-100%	0.2	-100%	N/A
-----	-----	-------	-----	-------	-----

<b>6,572.7</b>	<b>6,900.9</b>	<b>-5%</b>	<b>8,981.1</b>	<b>-27%</b>	<b>36%</b>
----------------	----------------	------------	----------------	-------------	------------

# CRIMINAL CODE OFFENCES BY DISTRICT

## Violent Crimes

	City of Winnipeg		Portage Avenue Districts <sup>17</sup>		Downtown Winnipeg <sup>17</sup>	
	2012 <sup>7</sup>	2011 - 2012 % Change <sup>5</sup>	2012 <sup>7</sup>	2011 - 2012 % Change <sup>5</sup>	2012 <sup>7</sup>	2011 - 2012 % Change <sup>5</sup>
Homicide	30	-27%	0	-100%	3	-50%
Criminal Negligence Causing Death	3	-25%	0	0%	0	0%
Attempted Murder	6	20%	0	0%	0	0%
Sexual Assault - Aggravated <sup>2</sup>	2	N/C	0	0%	0	0%
Sexual Assault - with a Weapon <sup>2</sup>	9	-18%	0	0%	0	-100%
Sexual Assault - Common <sup>2</sup>	657	-8%	24	-29%	57	-8%
Other Sexual Offences <sup>2, 16</sup>	36	0%	1	0%	1	0%
Assault - Aggravated <sup>2</sup>	99	-19%	2	100%	11	22%
Assault - with Weapon or Causing Bodily Harm <sup>2</sup>	1,365	-8%	66	-11%	154	-3%
Assault - Common <sup>2</sup>	2,994	-3%	161	-20%	388	-11%
All Assaults against Peace Officer <sup>2</sup>	250	13%	40	60%	82	71%
All Other Assaults <sup>2</sup>	5	-50%	2	N/C	2	100%
Firearms Offences (use of / discharge / point)	26	8%	0	0%	1	N/C
All Robberies <sup>2</sup>	1,660	-5%	106	-1%	287	18%
Kidnapping / Forcible Confinement <sup>2</sup>	78	-22%	3	0%	13	63%
All Abductions <sup>2</sup>	6	200%	0	0%	1	N/C
Extortion <sup>2</sup>	3	-57%	0	0%	0	0%
Criminal Harassment	51	-34%	4	-60%	6	-54%
Uttering Threats	789	-16%	52	21%	104	7%
Threatening / Harassing Phone Calls	46	5%	1	0%	3	50%
Other Violent Crimes <sup>2</sup>	36	16%	1	-50%	1	-75%
<b>Total</b>	<b>8,151</b>	<b>-6%</b>	<b>463</b>	<b>-8%</b>	<b>1,114</b>	<b>2%</b>

## Property Crimes

Break & Enter <sup>2</sup>	4,590	-3%	94	96%	195	44%
Possess Stolen Property	245	-7%	10	-23%	25	9%
Motor Vehicle Thefts <sup>2</sup>	2,170	-4%	45	50%	116	4%
Theft - Over \$5,000 (Non-Motor Vehicle) <sup>2</sup>	218	0%	7	-36%	18	0%
Theft - \$5,000 or Under (Non-Motor Vehicle) <sup>2</sup>	10,878	-2%	697	-25%	1,511	-1%
Fraud <sup>2, 11</sup>	1,064	4%	52	2%	94	-6%
Mischief <sup>2</sup>	11,521	-5%	440	-23%	929	-18%
Arson <sup>2, 3</sup>	422	-8%	3	0%	12	9%
<b>Total</b>	<b>31,108</b>	<b>-3%</b>	<b>1,348</b>	<b>-19%</b>	<b>2,900</b>	<b>-5%</b>

**NOTE:** The actual counts, the rates, the percent changes, and the clearance rates data for City of Winnipeg crime totals include calculations provided by the Canadian Centre for Justice Statistics (CCJS). Due to CCJS updates, previously reported numbers are subject to change. As a result, data printed in the 2011 Winnipeg Police Service Annual Report will not contain the updated data, and should not be compared with the data presented herein.

# CRIMINAL CODE OFFENCES BY DISTRICT

	District 1 (Central)		District 2 <sup>6</sup> (West)		District 3 (North)		District 4 (East)		District 6 <sup>6</sup>		Not District Specific <sup>15</sup>
	2012 <sup>7</sup>	2011 - 2012 % Change <sup>5</sup>	2012 <sup>7</sup>	2011 - 2012 % Change <sup>5</sup>	2012 <sup>7</sup>	2011 - 2012 % Change <sup>5</sup>	2012 <sup>7</sup>	2011 - 2012 % Change <sup>5</sup>	2012 <sup>7</sup>	2011 - 2012 % Change <sup>5</sup>	
	12	-20%	2	100%	8	-56%	6	200%	2	-60%	0
	0	0%	0	0%	0	0%	0	-100%	0	-100%	3
	1	-75%	1	N/C	2	100%	1	N/C	1	N/C	0
	0	0%	0	0%	0	0%	1	N/C	1	N/C	0
	3	0%	0	-100%	4	0%	0	-100%	2	N/C	0
	189	-7%	51	-7%	149	-14%	142	14%	73	-1%	53
	1	-86%	4	0%	9	125%	10	43%	3	50%	9
	48	0%	12	20%	20	-44%	12	-20%	7	-30%	0
	477	-11%	114	21%	418	-6%	216	-8%	137	-11%	3
	982	-6%	229	1%	797	-3%	595	3%	366	4%	25
	125	29%	26	30%	53	-2%	31	48%	15	-25%	0
	3	50%	0	0%	1	0%	1	-75%	0	-100%	0
	8	100%	3	50%	12	9%	1	-75%	2	0%	0
	683	-1%	115	6%	449	-8%	255	-12%	154	17%	4
	28	-3%	3	-50%	22	-37%	16	0%	8	-20%	1
	2	100%	1	N/C	2	100%	0	0%	1	N/C	0
	0	0%	1	N/C	1	-75%	1	-67%	0	0%	0
	15	-21%	8	33%	6	-50%	12	-14%	9	-57%	1
	234	-3%	65	-24%	191	-11%	169	-28%	121	-12%	9
	10	150%	1	-75%	6	-45%	16	14%	12	33%	1
	10	11%	1	-67%	11	267%	13	160%	0	-100%	1
<b>Total</b>	<b>2,831</b>	<b>-4%</b>	<b>637</b>	<b>1%</b>	<b>2,161</b>	<b>-7%</b>	<b>1,498</b>	<b>-5%</b>	<b>914</b>	<b>-2%</b>	<b>110</b>

	850	-2%	485	-19%	1,104	5%	1,298	2%	853	-2%	0
	66	38%	24	9%	39	-24%	66	25%	43	-9%	7
	386	-18%	258	4%	657	0%	547	6%	277	-13%	45
	35	-20%	36	9%	35	-5%	56	-2%	39	8%	17
	2,869	-2%	1,410	6%	1,744	0%	2,635	1%	1,797	-5%	423
	190	-10%	154	16%	158	16%	261	29%	163	-7%	138
	2,537	-16%	1,211	-7%	2,490	-3%	2,967	3%	1,867	-2%	449
	93	3%	36	-16%	175	14%	73	-31%	41	-36%	4
<b>Total</b>	<b>7,026</b>	<b>-9%</b>	<b>3,614</b>	<b>-2%</b>	<b>6,402</b>	<b>0%</b>	<b>7,903</b>	<b>2%</b>	<b>5,080</b>	<b>-4%</b>	<b>1,083</b>

# CRIMINAL CODE OFFENCES BY DISTRICT

## Other Crimes

	City of Winnipeg		Portage Avenue Districts <sup>17</sup>		Downtown Winnipeg <sup>17</sup>	
	2012 <sup>7</sup>	2011 - 2012 % Change <sup>5</sup>	2012 <sup>7</sup>	2011 - 2012 % Change <sup>5</sup>	2012 <sup>7</sup>	2011 - 2012 % Change <sup>5</sup>
Counterfeiting <sup>2</sup>	57	-50%	2	-82%	15	-32%
Weapons Violations	446	-10%	21	0%	73	4%
Child Pornography <sup>2</sup>	13	63%	0	0%	0	0%
Prostitution	143	-5%	0	0%	1	N/C
Disturb the Peace	34	-6%	4	-20%	7	-36%
Administration of Justice Violations <sup>2, 13</sup>	4,442	8%	196	21%	605	22%
Other Criminal Code Violations <sup>2, 13</sup>	174	7%	11	38%	18	50%
<b>Total</b>	<b>5,309</b>	<b>5%</b>	<b>234</b>	<b>13%</b>	<b>719</b>	<b>17%</b>

## Traffic Offences

Impaired Driving / Drive over .08 mg	442	-18%	21	62%	45	10%
Other Criminal Code Traffic Violations <sup>14</sup>	216	39%	10	67%	23	53%
<b>Total Traffic Offences</b>	<b>658</b>	<b>-6%</b>	<b>31</b>	<b>63%</b>	<b>68</b>	<b>21%</b>

## CDSA<sup>2</sup>

Possession - Cannabis	178	-21%	15	-12%	35	-15%
Possession - Cocaine	75	-9%	3	200%	8	0%
Possession - Other	53	-15%	5	150%	9	80%
Trafficking / Production / Distribution - Cannabis <sup>2</sup>	188	-1%	5	-55%	31	-35%
Trafficking / Production / Distribution - Cocaine <sup>2</sup>	244	5%	4	-20%	15	50%
Trafficking / Production / Distribution - Other <sup>2</sup>	68	-11%	7	40%	20	54%
<b>Total CDSA</b>	<b>806</b>	<b>-7%</b>	<b>39</b>	<b>-5%</b>	<b>118</b>	<b>-6%</b>

# CRIMINAL CODE OFFENCES BY DISTRICT

District 1 (Central)		District 2 <sup>6</sup> (West)		District 3 (North)		District 4 (East)		District 6 <sup>6</sup>		Not District Specific <sup>15</sup>
2012 <sup>7</sup>	2011 - 2012 % Change <sup>5</sup>	2012 <sup>7</sup>	2011 - 2012 % Change <sup>5</sup>	2012 <sup>7</sup>	2011 - 2012 % Change <sup>5</sup>	2012 <sup>7</sup>	2011 - 2012 % Change <sup>5</sup>	2012 <sup>7</sup>	2011 - 2012 % Change <sup>5</sup>	Total <sup>7</sup>
17	-29%	1	-94%	8	-62%	19	-46%	12	-14%	0
168	-5%	36	6%	124	-18%	85	-8%	31	-18%	2
1	-50%	3	N/C	3	200%	4	33%	1	0%	1
84	14%	1	-67%	57	-23%	0	0%	0	0%	1
14	-13%	2	-33%	5	67%	12	-14%	1	N/C	0
1,634	20%	319	10%	1,323	0%	755	15%	396	-1%	15
37	-3%	44	132%	26	-21%	31	-16%	18	-5%	18
<b>1,955</b>	<b>15%</b>	<b>406</b>	<b>12%</b>	<b>1,546</b>	<b>-4%</b>	<b>906</b>	<b>8%</b>	<b>459</b>	<b>-3%</b>	<b>37</b>

87	-16%	60	2%	76	-21%	144	-23%	73	-20%	2
63	62%	27	145%	45	29%	47	12%	31	55%	3
<b>150</b>	<b>6%</b>	<b>87</b>	<b>24%</b>	<b>121</b>	<b>-8%</b>	<b>191</b>	<b>-16%</b>	<b>104</b>	<b>-6%</b>	<b>5</b>

58	-9%	20	-23%	36	-20%	44	-25%	19	-34%	1
20	-9%	6	-54%	27	-13%	19	58%	3	0%	0
16	-6%	7	-30%	15	50%	6	-67%	9	50%	0
61	-12%	23	44%	47	4%	40	14%	17	-23%	0
78	15%	9	-63%	94	12%	42	20%	21	75%	0
32	39%	7	-42%	15	-21%	7	-50%	7	-13%	0
<b>265</b>	<b>1%</b>	<b>72</b>	<b>-29%</b>	<b>234</b>	<b>0%</b>	<b>158</b>	<b>-9%</b>	<b>76</b>	<b>-5%</b>	<b>1</b>

# CRIMINAL CODE OFFENCES BY DISTRICT

## YCJA<sup>12</sup>

	City of Winnipeg		Portage Avenue Districts <sup>17</sup>		Downtown Winnipeg <sup>17</sup>	
	2012 <sup>7</sup>	2011 - 2012 % Change <sup>5</sup>	2012 <sup>7</sup>	2011 - 2012 % Change <sup>5</sup>	2012 <sup>7</sup>	2011 - 2012 % Change <sup>5</sup>
YCJA <sup>12</sup>	296	27%	9	80%	23	53%

## Other Federal Statutes<sup>2</sup>

Other Federal Statutes <sup>2</sup>	0	-100%	0	0%	0	0%
-------------------------------------	---	-------	---	----	---	----

## Grand Total

	City of Winnipeg		Portage Avenue Districts <sup>17</sup>		Downtown Winnipeg <sup>17</sup>	
	2012 <sup>7</sup>	2011 - 2012 % Change <sup>5</sup>	2012 <sup>7</sup>	2011 - 2012 % Change <sup>5</sup>	2012 <sup>7</sup>	2011 - 2012 % Change <sup>5</sup>
Grand Total	46,328	-3%	2,124	-13%	4,942	0%
Total Area (square km)	475.20		N/A		3.30	

# CRIMINAL CODE OFFENCES BY DISTRICT

District 1 (Central)		District 2 <sup>6</sup> (West)		District 3 (North)		District 4 (East)		District 6 <sup>6</sup>		Not District Specific <sup>15</sup>
2012 <sup>7</sup>	2011 - 2012 % Change <sup>5</sup>	2012 <sup>7</sup>	2011 - 2012 % Change <sup>5</sup>	2012 <sup>7</sup>	2011 - 2012 % Change <sup>5</sup>	2012 <sup>7</sup>	2011 - 2012 % Change <sup>5</sup>	2012 <sup>7</sup>	2011 - 2012 % Change <sup>5</sup>	Total <sup>7</sup>
73	16%	15	400%	118	6%	62	59%	28	65%	0

0	-100%	0	-100%	0	0%	0	0%	0	0%	0
---	-------	---	-------	---	----	---	----	---	----	---

District 1 (Central)		District 2 <sup>6</sup> (West)		District 3 (North)		District 4 (East)		District 6 <sup>6</sup>		Not District Specific <sup>15</sup>
2012 <sup>7</sup>	2011 - 2012 % Change <sup>5</sup>	2012 <sup>7</sup>	2011 - 2012 % Change <sup>5</sup>	2012 <sup>7</sup>	2011 - 2012 % Change <sup>5</sup>	2012 <sup>7</sup>	2011 - 2012 % Change <sup>5</sup>	2012 <sup>7</sup>	2011 - 2012 % Change <sup>5</sup>	Total <sup>7</sup>
12,300	-4%	4,831	-1%	10,582	-2%	10,718	1%	6,661	-4%	1,236
14.22		65.11		65.28		174.37		156.22		



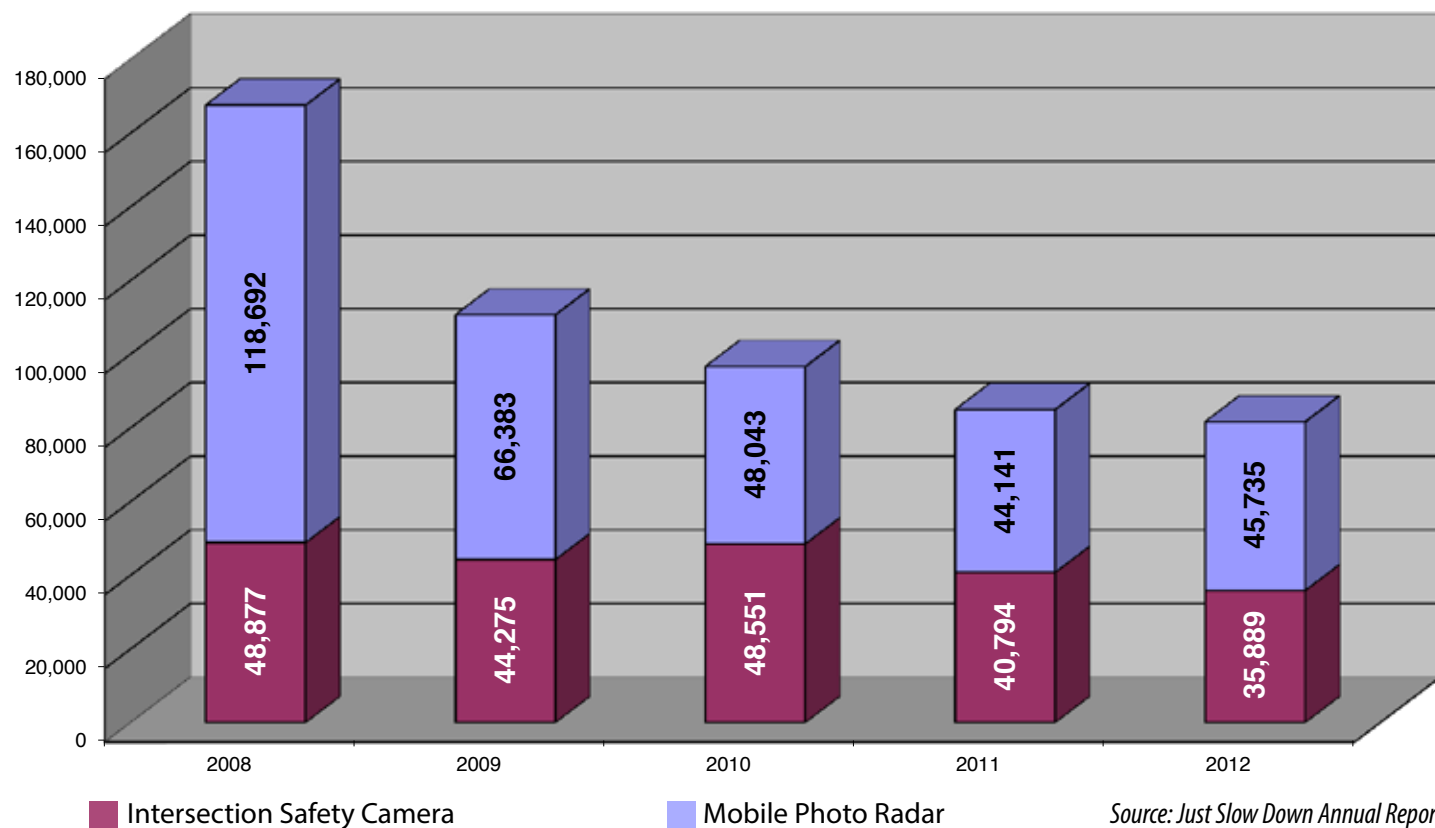
# TRAFFIC OFFENCES

## Criminal Code Traffic Offences <sup>1,7</sup>

	# of Persons Charged	2011 - 2012% Change <sup>5</sup>
Dangerous Operation Causing Death	4	0%
Dangerous Operation Causing Bodily Harm	7	75%
Dangerous Operation	49	9%
Dangerous Operation Evade Police	19	19%
Dangerous Operation Evade Police Causing Death	0	0%
Impaired Operation Causing Death	1	-67%
Impaired Operation Causing Bodily Harm	6	-68%
Impaired Operation or Over 0.08	432	-16%
Fail/Refuse to Provide Breath/Blood Sample	5	25%
Other Criminal Code Traffic Offences	147	55%
<b>Total</b>	<b>670</b>	<b>-5%</b>

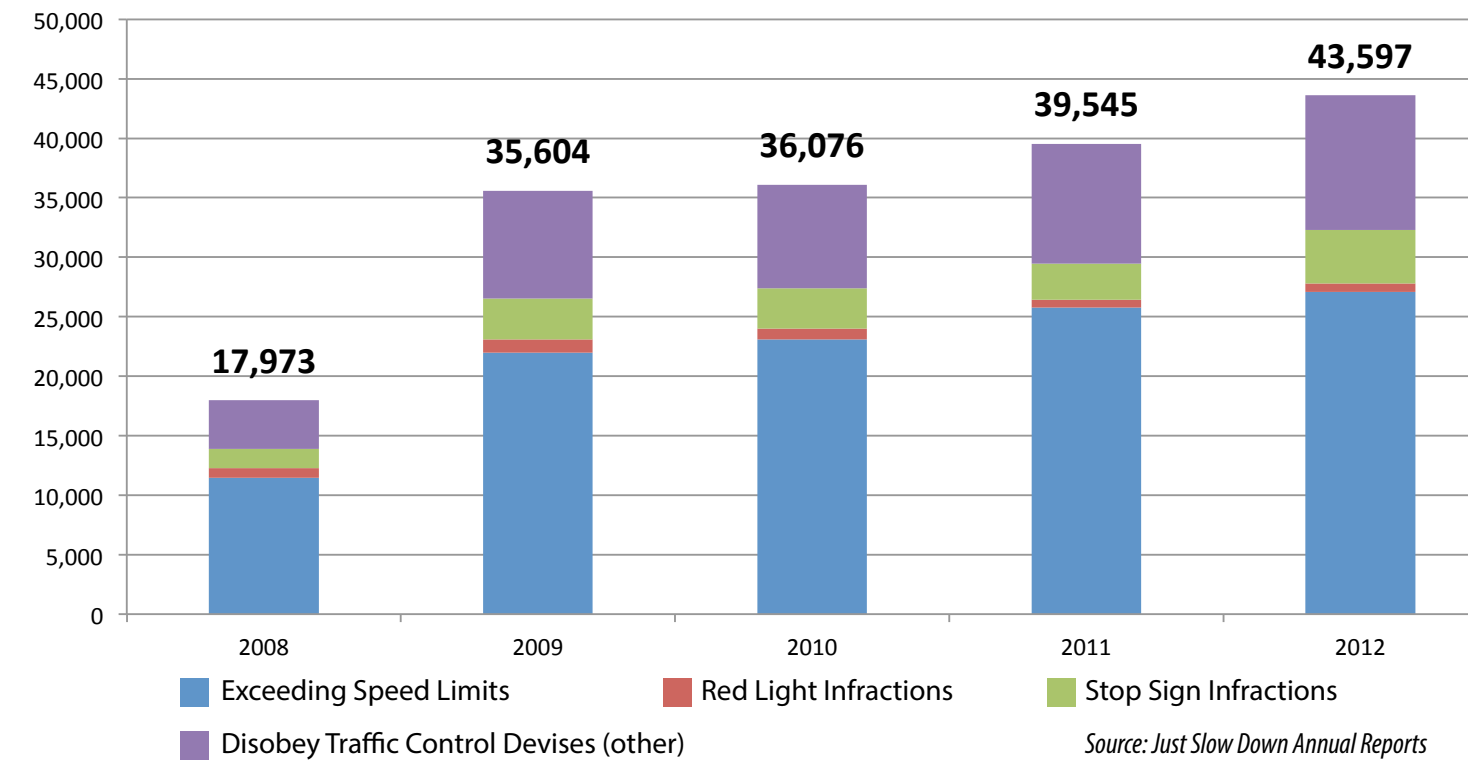
Source: Statistics Canada

## Photo Enforcement



# TRAFFIC OFFENCES

## Offence Notices Issued by Conventional Means



## Professional Standards Unit

### PROFESSIONAL STANDARDS UNIT

#### Files Initiated in 2012 (Criminal)

Unfounded	1
Informal	0
Crown Opinion – No Charge	1
Information Only	1
Not Sustained	1
Abandoned	4
Sustained	1
Open	16
<b>Total</b>	<b>25</b>

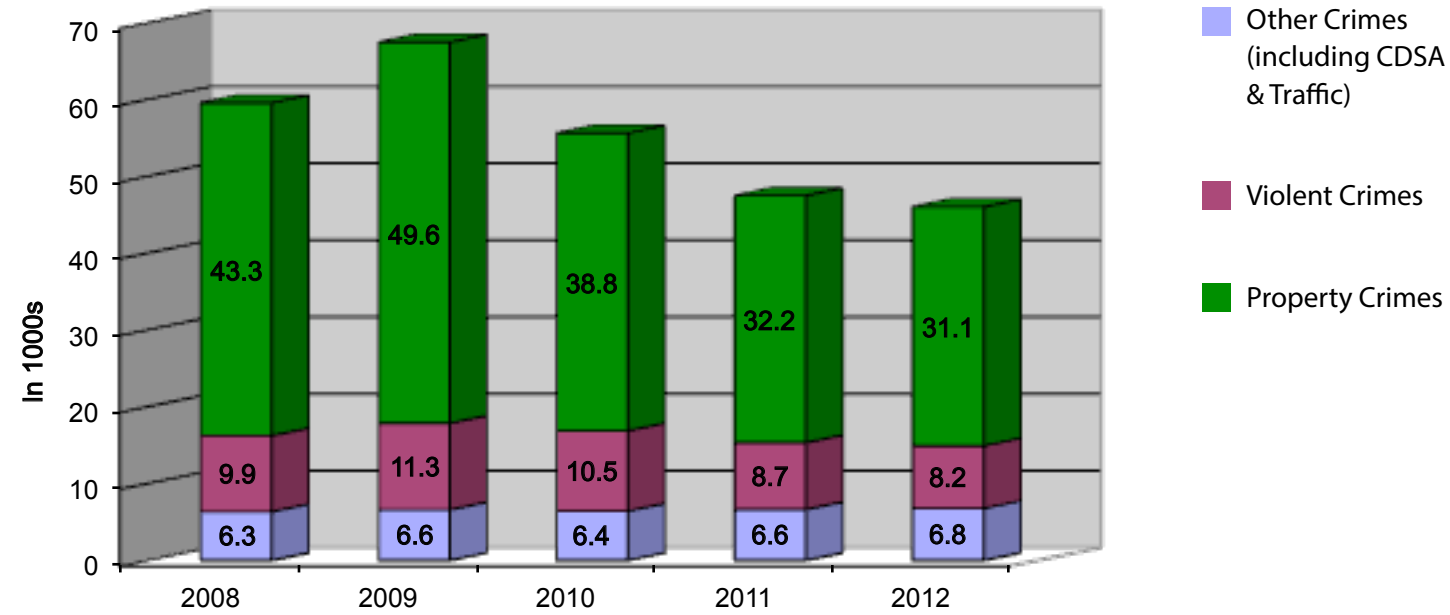
### PROFESSIONAL STANDARDS UNIT

#### Files Initiated in 2012 (Regulatory)

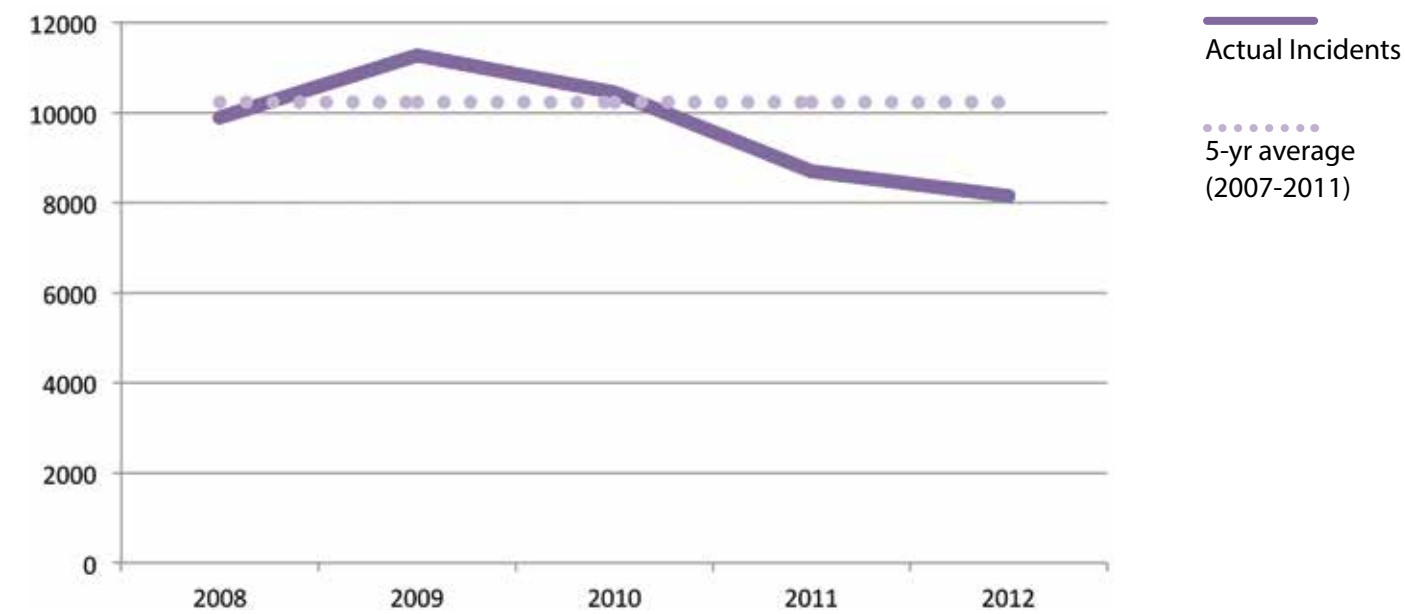
Unfounded	0
Informal	1
Divisional Commander Referral	1
Information Only	2
Not Sustained	2
Abandoned	2
Sustained	3
Open	5
<b>Total</b>	<b>16</b>

\*\* Professional Standards Unit Files initiated for Information Only in 2012 – 130 \*\*

## Total Criminal Code Offences



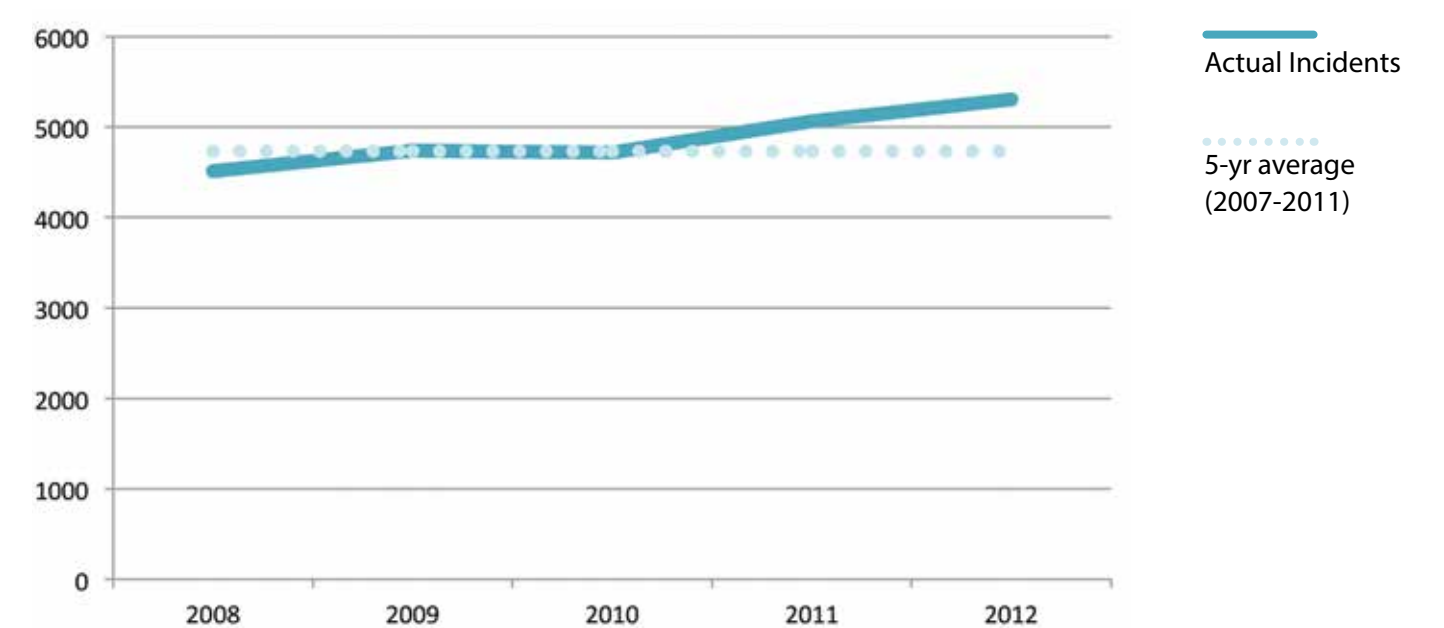
## Violent Crimes<sup>1</sup>: 2008-2012



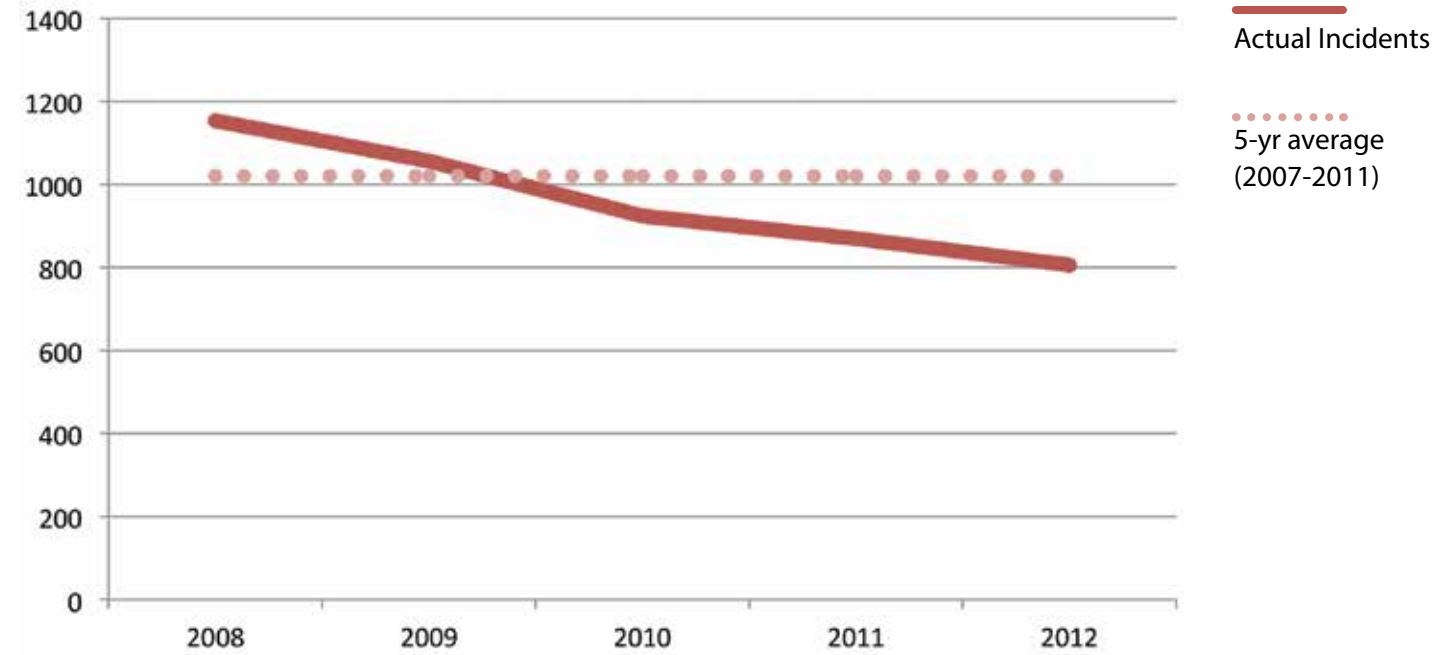
## Property Crimes<sup>1</sup>: 2008-2012



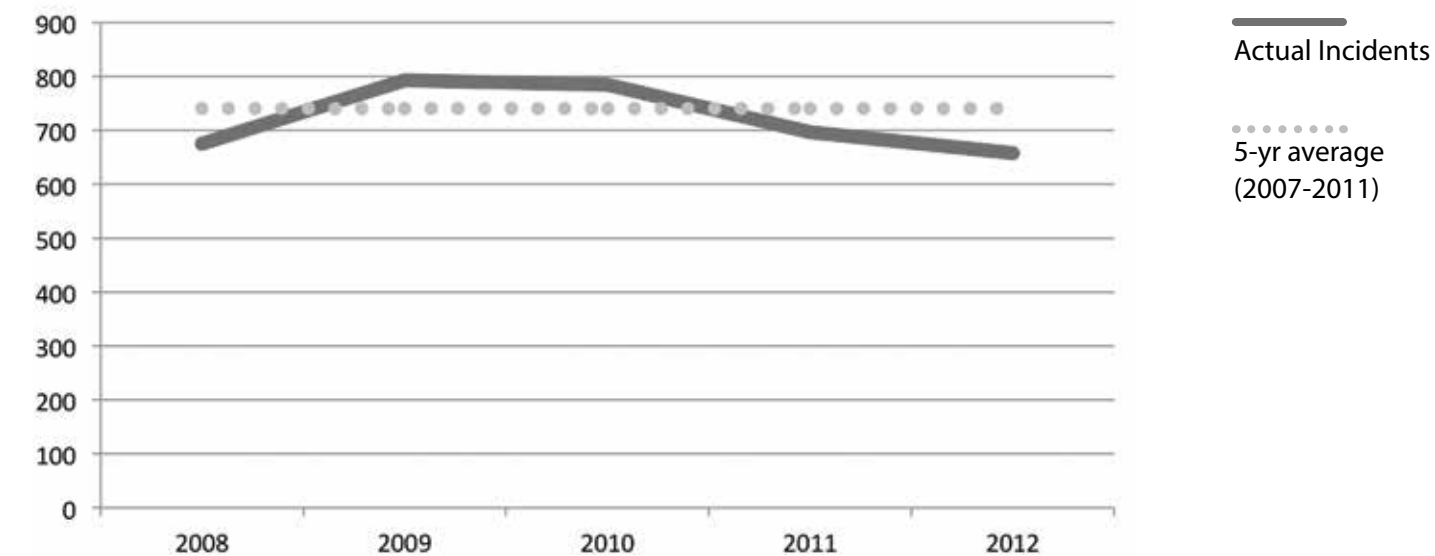
## Other Crimes<sup>1</sup>: 2008-2012



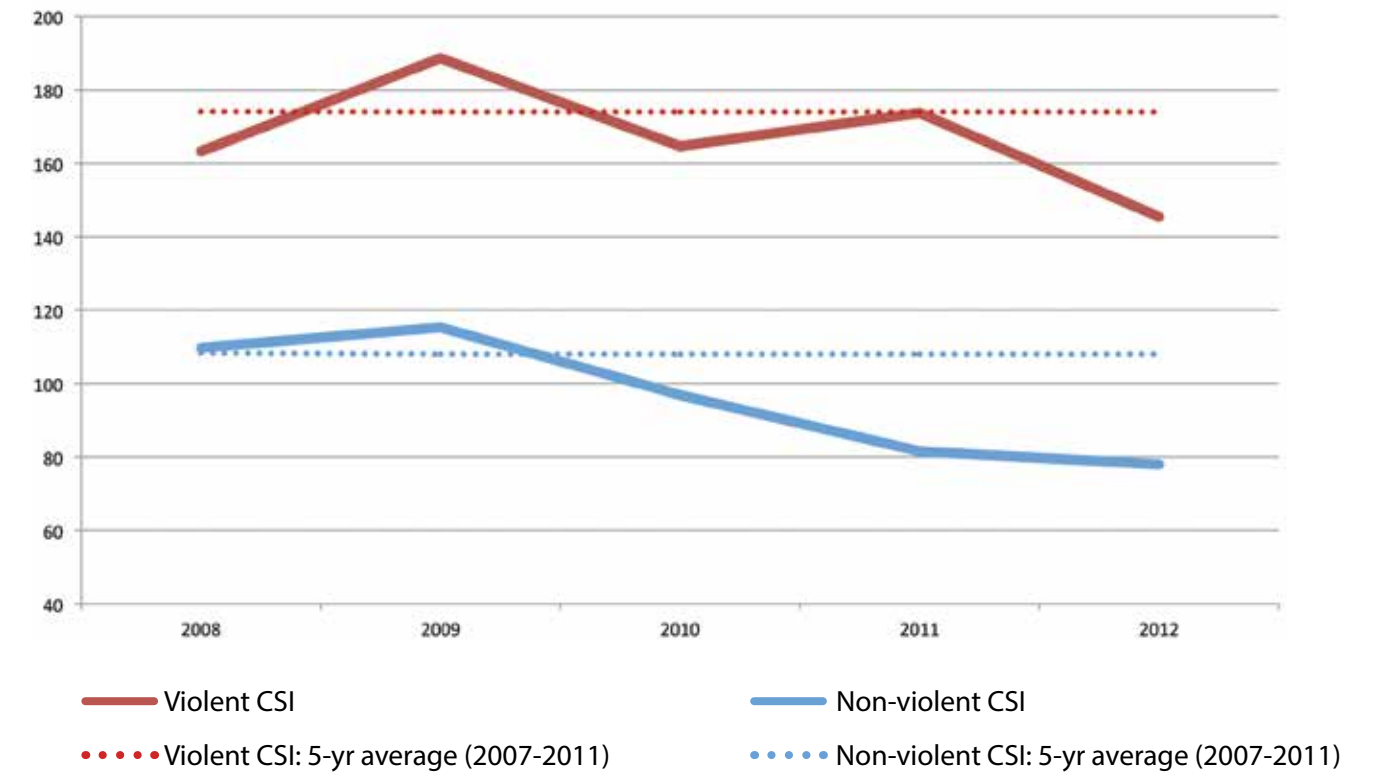
## CDSA<sup>1</sup>: 2008-2012



## Criminal Code Traffic Violations<sup>1</sup>: 2008-2012



## Violent and Non-violent Crime Severity Indices (CSI) 2008-2012

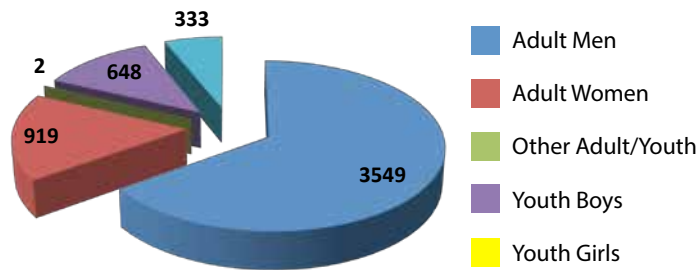


Source: Statistics Canada

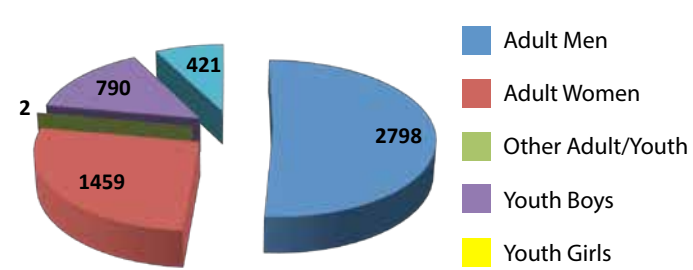
# PERSONS CHARGED

# DOMESTIC VIOLENCE

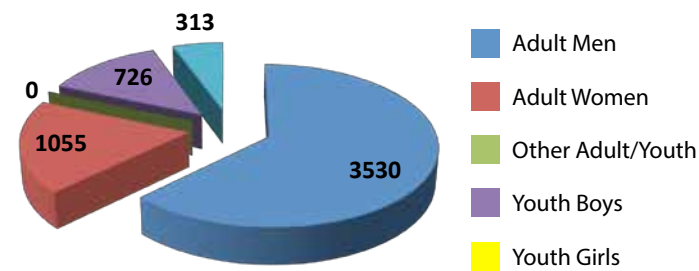
**Violent Crimes - Persons Charged<sup>7</sup>**



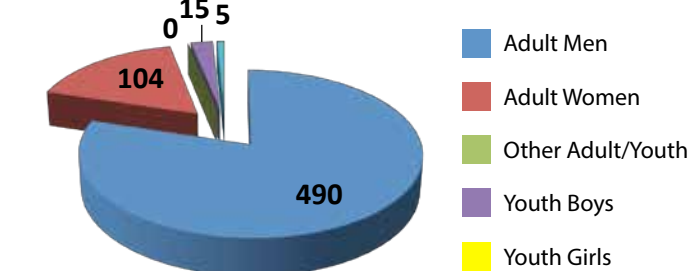
**Property Crimes - Persons Charged<sup>7</sup>**



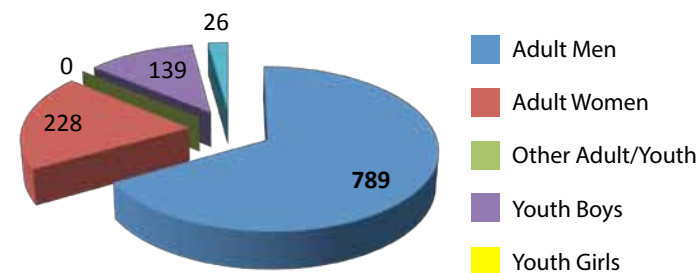
**Other Criminal Code - Persons Charged<sup>7</sup>**



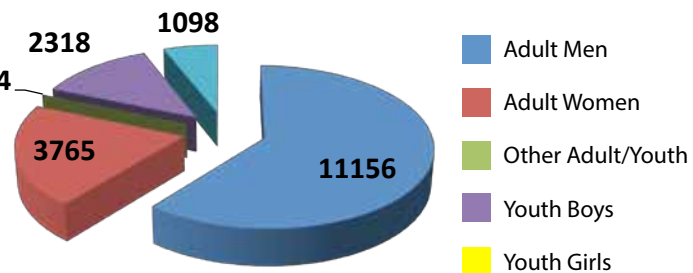
**Criminal Code Traffic - Persons Charged<sup>7</sup>**



**Controlled Drugs & Substances Persons Charged<sup>7</sup>**

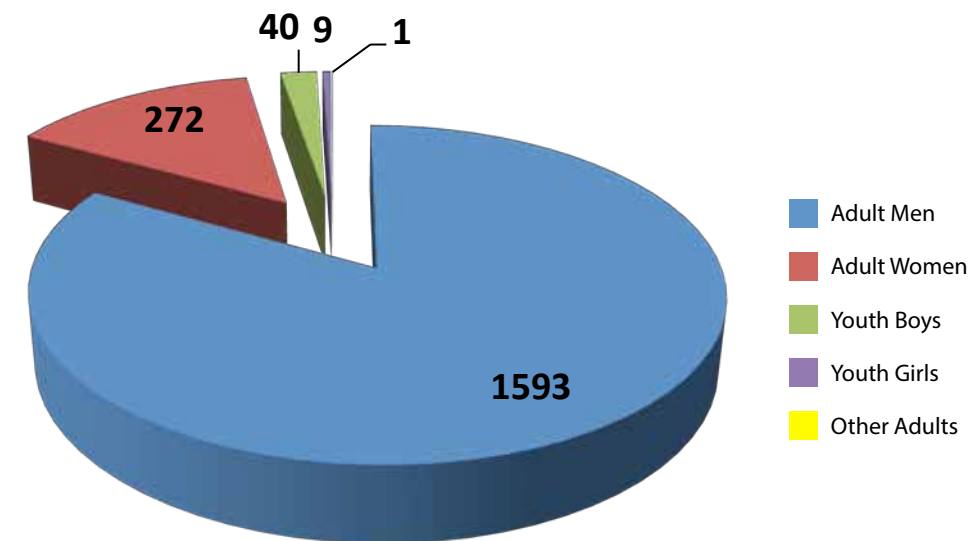


**Total Criminal Code - Persons Charged<sup>7</sup>**

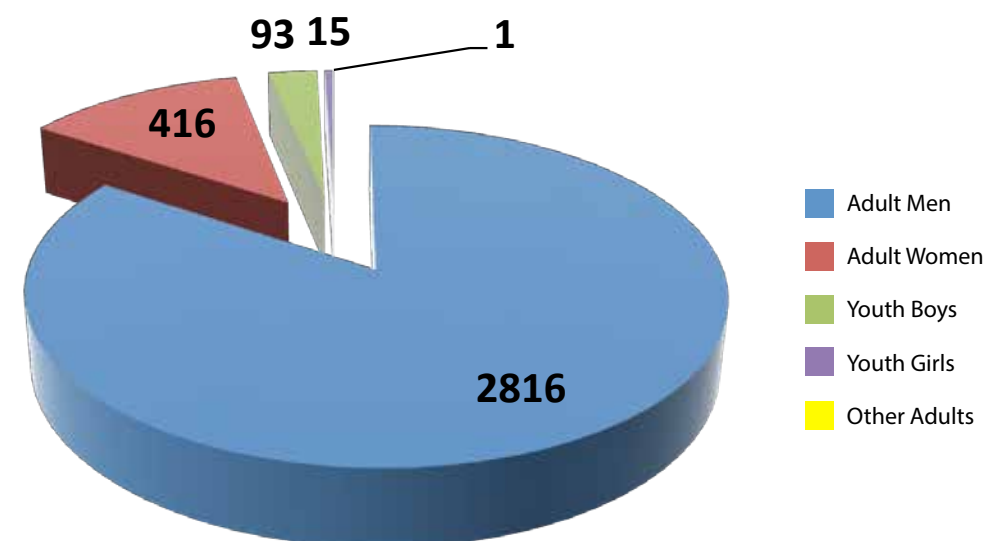


		2011-2012 Change
<b>Total Domestic Violence Events for Service<sup>8,9</sup></b>	15,721	-8.8%
Criminal Events <sup>1, 2, 7, 10</sup>	1,964	-5.9%
Criminal Events (Both Persons Charged)	61	-16.4%

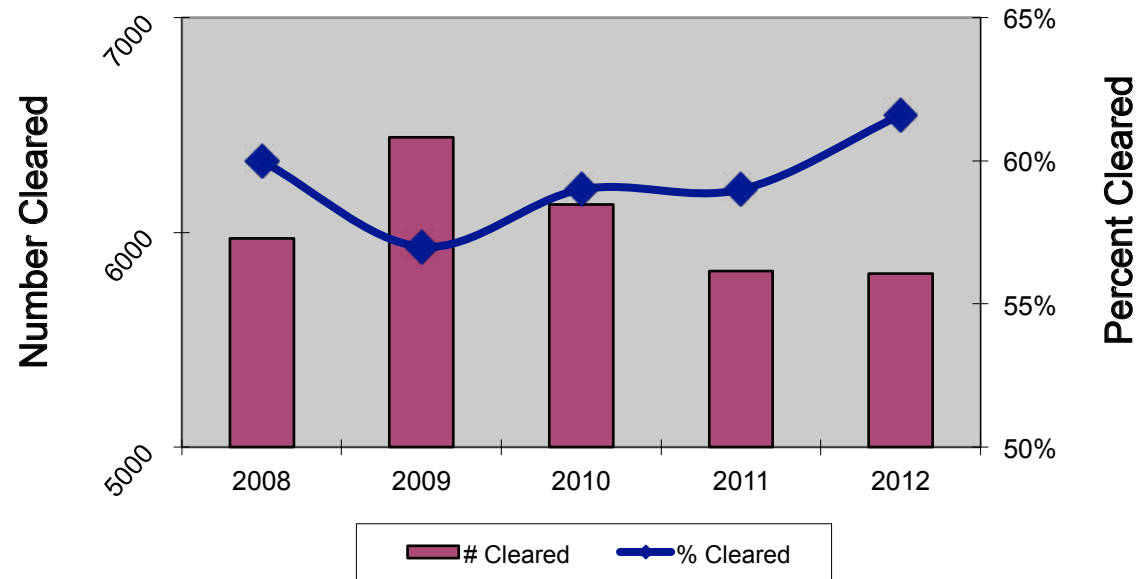
**Domestic Violence - Persons Charged**



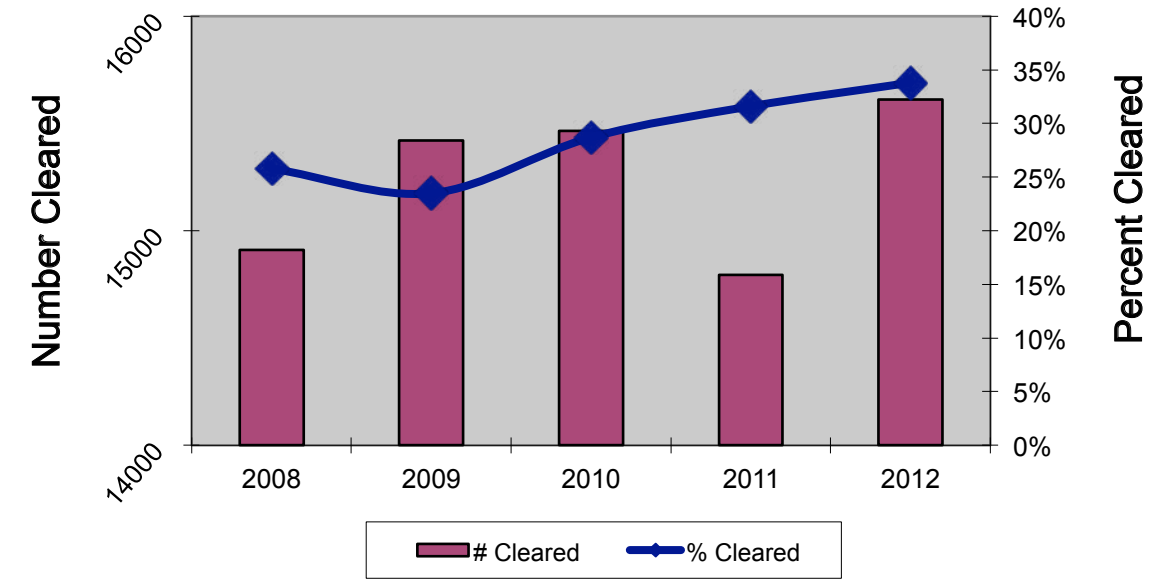
**Domestic Violence - Number Charges Laid**



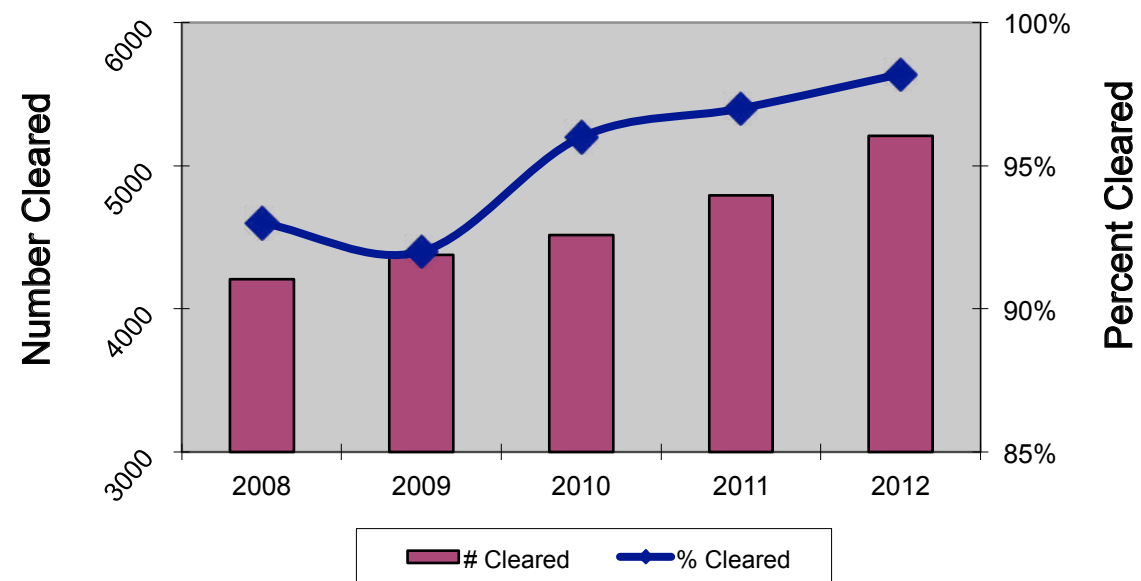
## Violent Crimes<sup>1</sup>



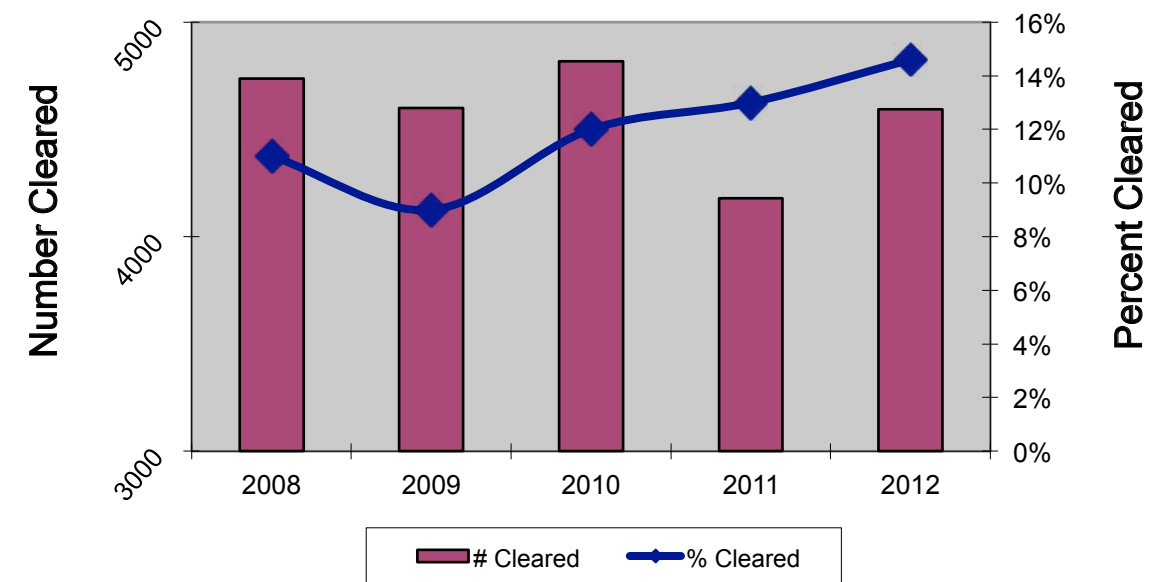
## All Criminal Code Offences<sup>1</sup> (not including Traffic Offences)



## Other Criminal Code Offences<sup>1</sup> (not including Traffic Offences)

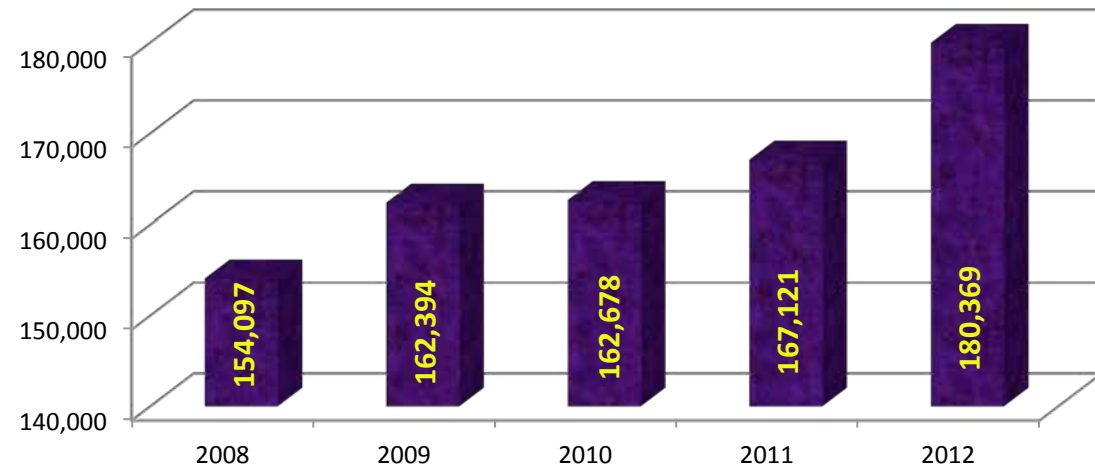


## Property Crimes<sup>1</sup>

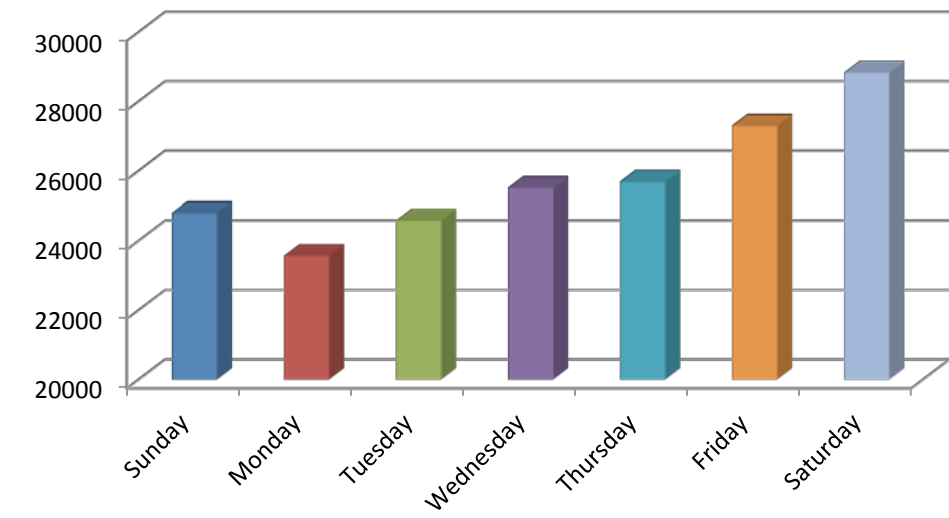


Source: Statistics Canada

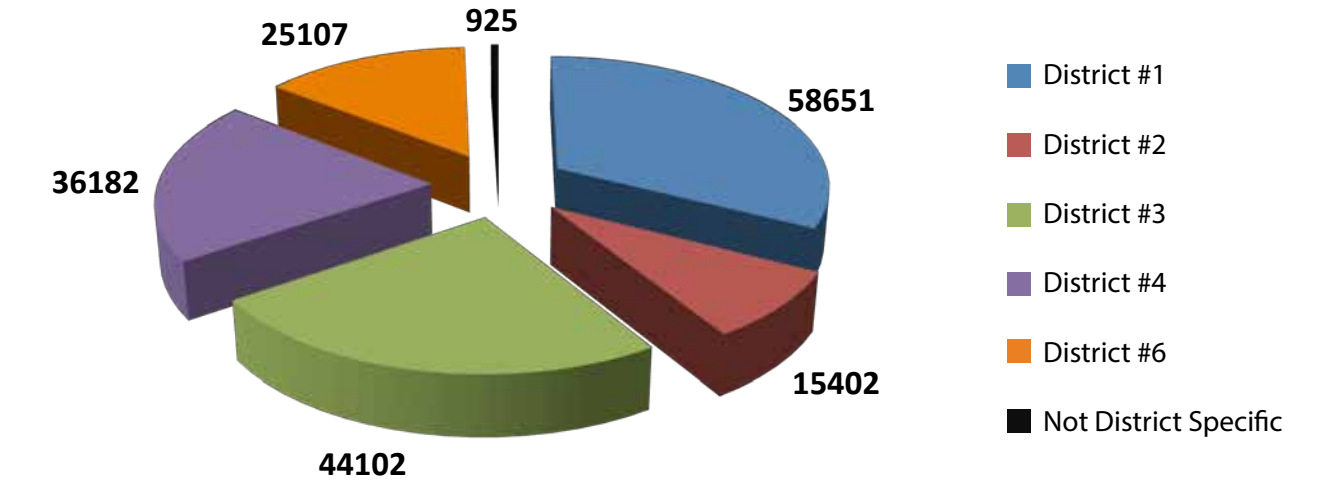
## Total Calls for Service<sup>4,9</sup> Dispatched & Police-initiated



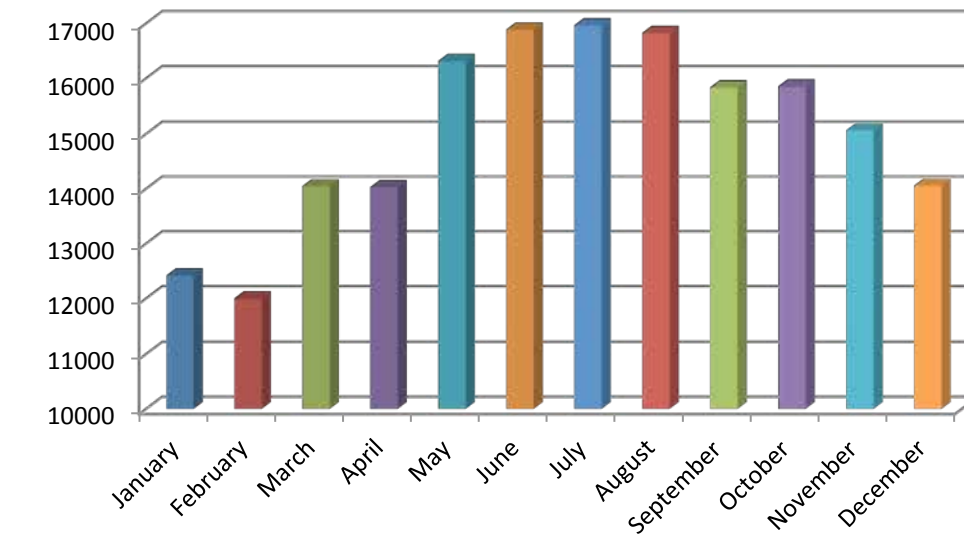
## Calls for Service<sup>4,9</sup> by Day of the Week



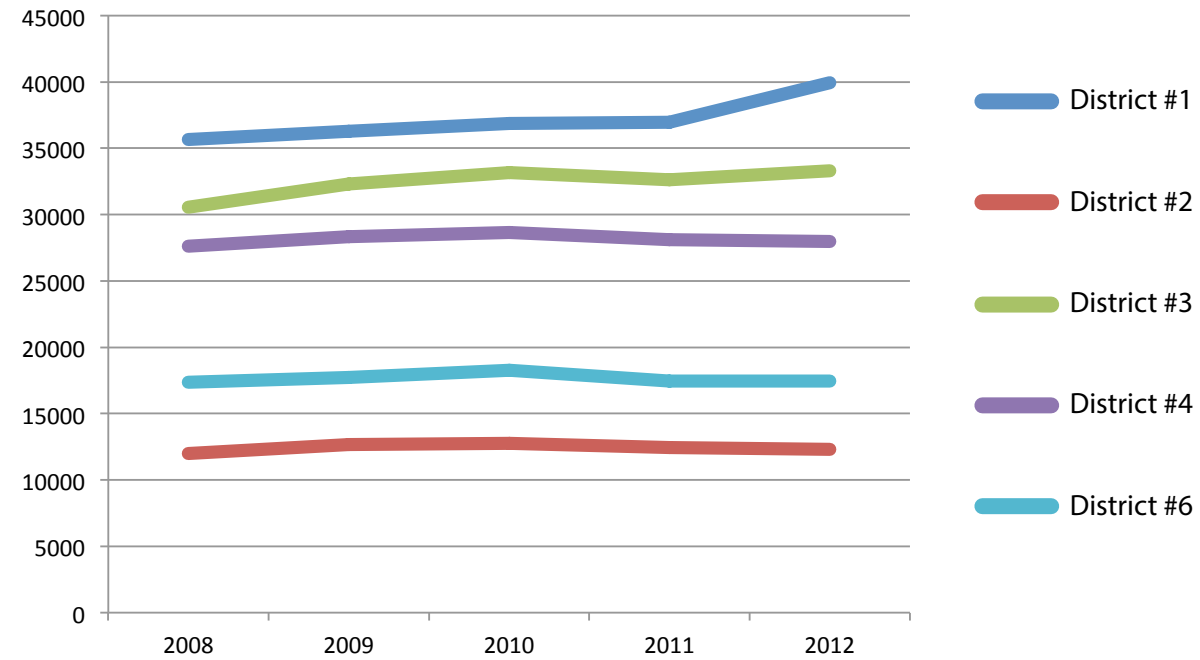
## Calls for Service<sup>4,9</sup> by District<sup>15</sup>



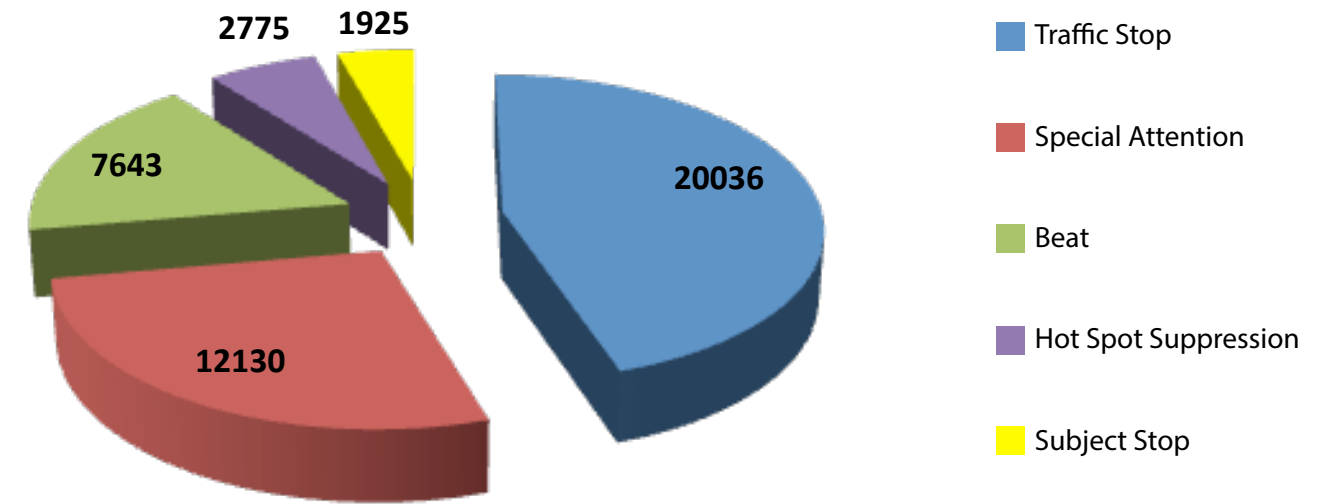
## Calls for Service<sup>4,9</sup> by Month



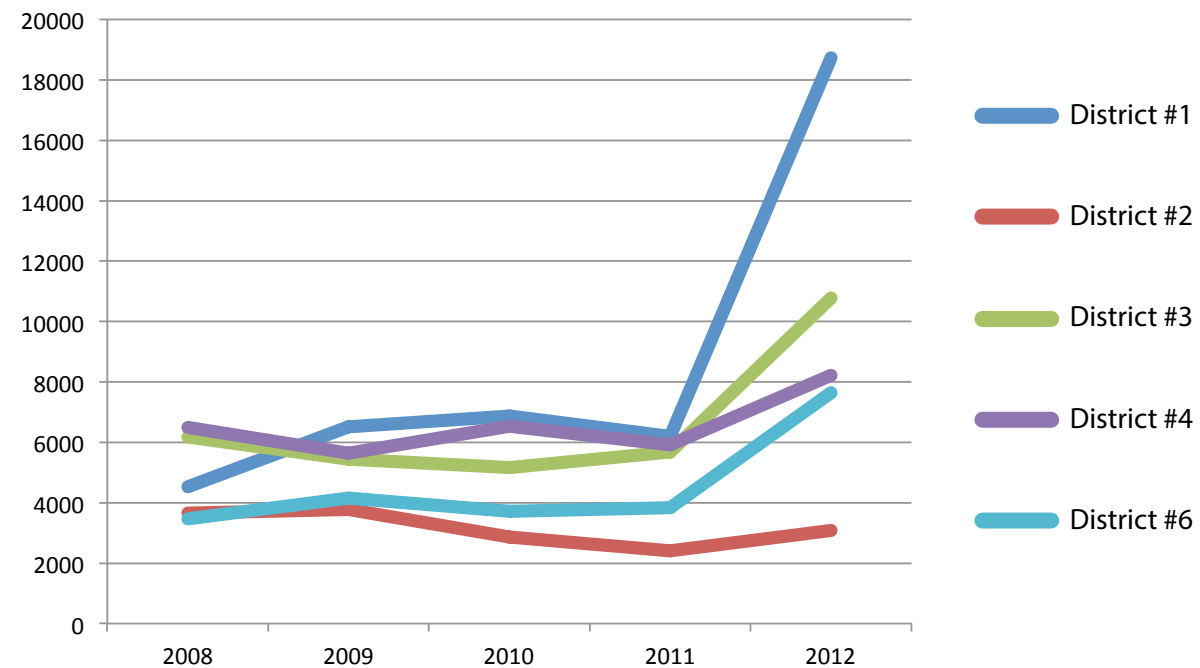
## Citizen Calls for Service<sup>4,9</sup> by Districts: 2008-2012



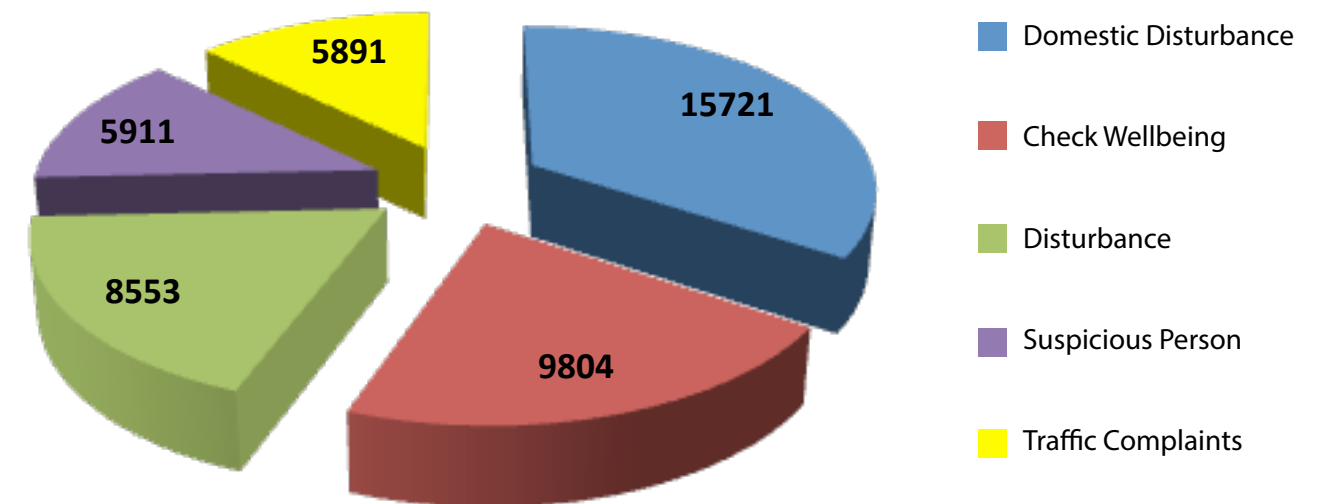
## Top 5 Events – Police Initiated<sup>9</sup>



## Police-initiated Events<sup>4,9</sup> by Districts: 2008-2012

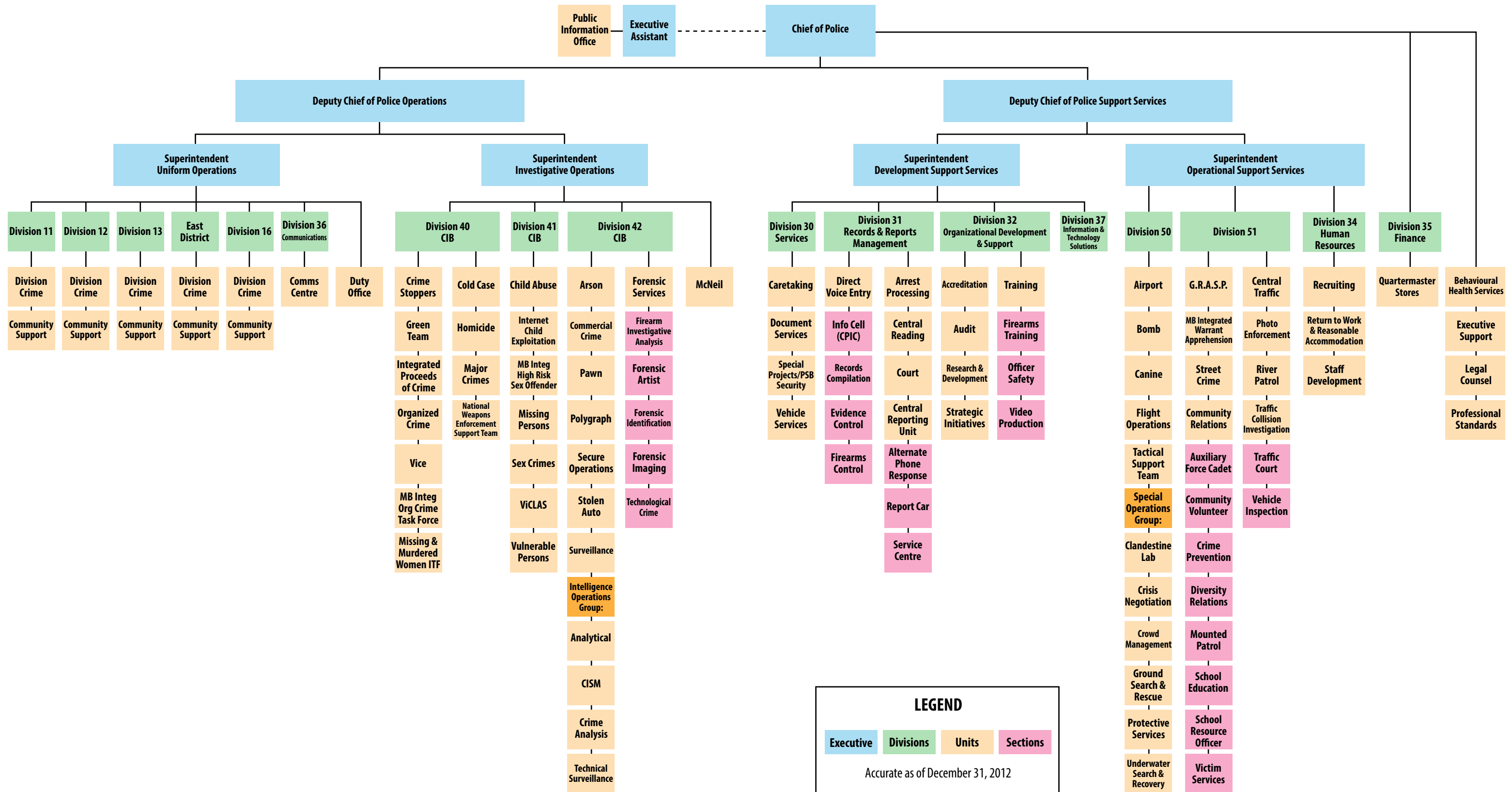


## Top 5 Events – Reported to Police<sup>9</sup>



# ORGANIZATIONAL CHART

# ORGANIZATIONAL CHART





# ENDNOTES

NC = Not Calculable

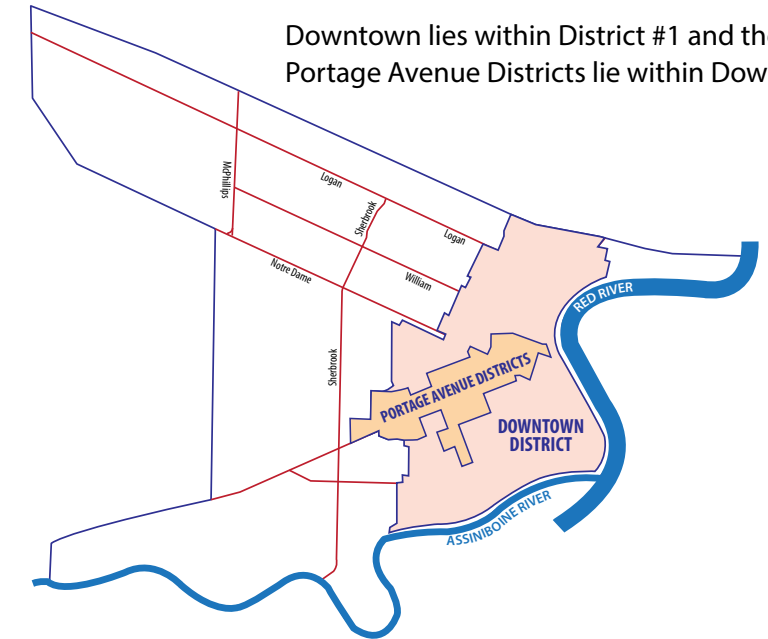
- 1 Criminal Code Offence data are based on Uniform Crime Reporting data submitted to the Canadian Centre for Justice Statistics, Statistics Canada (CCJS), and are not directly comparable to data published on the WPS CrimeStat website. Data were compiled in accordance with violent crimes (i.e. most serious violation against the victim), property crimes, and other crimes (i.e. first violation) scoring rules.
- 2 Includes attempted and actual.
- 3 Does not include Arson - Disregard for Human Life, which is a violent crime.
- 4 Calls where a police unit was assigned.
- 5 Small incident numbers can result in large percent changes.
- 6 In 2013, District 6 will merge with District 2 to become the larger District 2 (West).
- 7 Includes events where there is sufficient evidence to lay a charge, but the suspect is processed by other means.
- 8 Events where the accused and victim are in a current or past domestic relationship.
- 9 Includes criminal and non-criminal events.
- 10 Events where police confirmed a criminal offence occurred.
- 11 Includes Identity Theft and Identity Fraud.
- 12 YCJA: The Youth Criminal Justice Act has an available option that diverts youths away from the court process through extra-judicial measures (such as formal diversionary programs).
- 13 A number of crime categories were recategorised from the "Other Criminal Code Violations" category to the "Administration of Justice Violations" category.
- 14 Due to coding changes, data are not comparable to 2011 figures.
- 15 Not District Specific means crimes which occurred over more than one district, and crimes that occurred outside Winnipeg.
- 16 Includes Sexual Offences against Children.
- 17 Downtown lies within District #1 and the Portage Avenue Districts lie within Downtown.

## City Districts

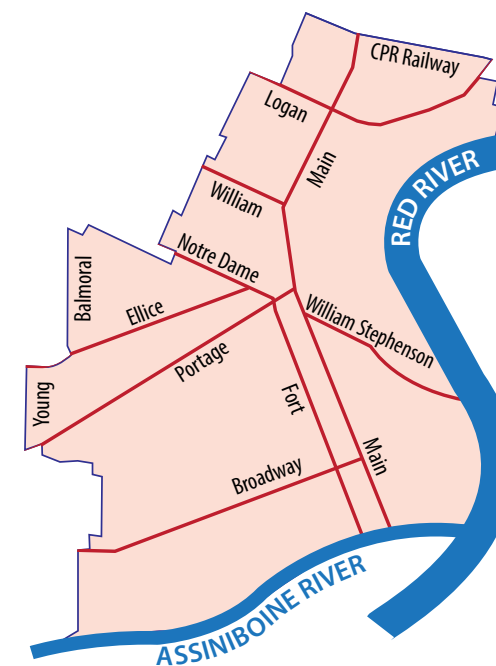


## District #1

Downtown lies within District #1 and the Portage Avenue Districts lie within Downtown.

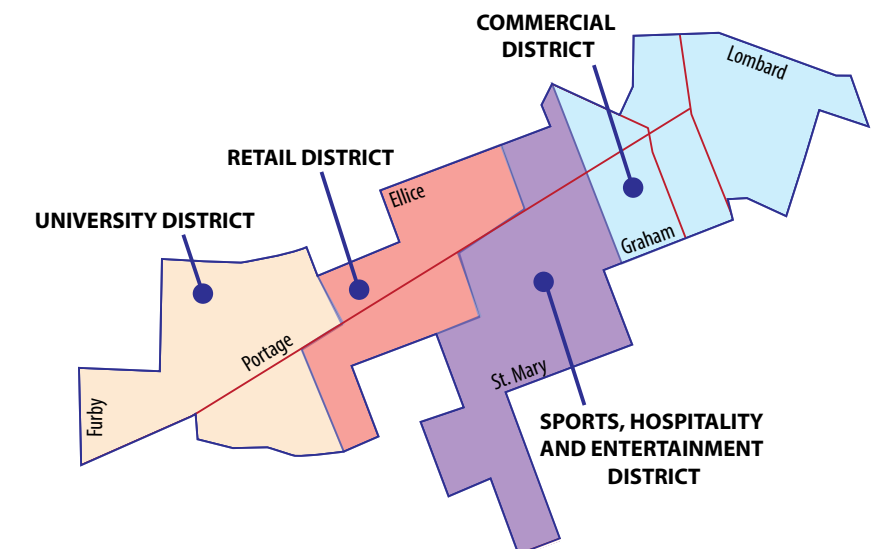


## Downtown



## Portage Avenue Districts

The Portage Avenue Districts include the University District, the Retail District, the Sports, Hospitality and Entertainment District, and the Commercial District.



# Winnipeg Police Service



Public Safety Building  
P.O. Box 1680  
Winnipeg, Manitoba  
R3C 2Z7

[winnipeg.ca/police](http://winnipeg.ca/police)