



## ARCHIVED - Archiving Content

### Archived Content

Information identified as archived is provided for reference, research or recordkeeping purposes. It is not subject to the Government of Canada Web Standards and has not been altered or updated since it was archived. Please contact us to request a format other than those available.

## ARCHIVÉE - Contenu archivé

### Contenu archivé

L'information dont il est indiqué qu'elle est archivée est fournie à des fins de référence, de recherche ou de tenue de documents. Elle n'est pas assujettie aux normes Web du gouvernement du Canada et elle n'a pas été modifiée ou mise à jour depuis son archivage. Pour obtenir cette information dans un autre format, veuillez communiquer avec nous.

This document is archival in nature and is intended for those who wish to consult archival documents made available from the collection of Public Safety Canada.

Some of these documents are available in only one official language. Translation, to be provided by Public Safety Canada, is available upon request.

Le présent document a une valeur archivistique et fait partie des documents d'archives rendus disponibles par Sécurité publique Canada à ceux qui souhaitent consulter ces documents issus de sa collection.

Certains de ces documents ne sont disponibles que dans une langue officielle. Sécurité publique Canada fournira une traduction sur demande.



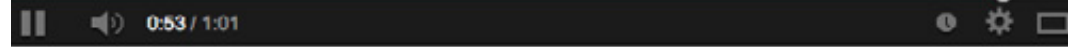
# REPORT TO THE COMMUNITY

2013 Fourth Quarter



# LOCK YOUR DOORS. HIDE YOUR VALUABLES.

EDMONTON  
**POLICE**  
SERVICE



# PSD QUANTO: MARCH 2008 – OCTOBER 2013

On Monday, October 7, 2013, Edmonton Police Service Dog (PSD) Quanto fell in the line of duty after being stabbed while police attempted to arrest a suspect.

PSD Quanto served the Edmonton Police Service (EPS) honourably following his acceptance into the Dog Master Training program in 2009. In order to become a PSD, dogs must display discipline, intelligence, and the ability to learn a broad range of profiles. Those who are successful become members of their handler's family, and of the EPS family-at-large.

At the 2012 Canadian Police Canine Association Police Dog Trials, Constable Matthew Williamson and PSD Quanto achieved second in criminal apprehension, second in obedience, fourth in building search, fifth in tracking, and third place overall.

PSD Quanto's passing led to a call for better protection for police dogs and other service animals.

The Edmonton Police Commission and the Edmonton Police Service thank citizens from across the province and around the world for their tremendous support. PSD Quanto will long be remembered as a loyal member of the Edmonton Police Service.



**Trust in me my friend,  
for I am your comrade.  
I will protect you with my last breath.  
Together we will conquer all obstacles,  
and search out those who wish  
to do harm to others.  
Together you and I shall experience  
a bond only others like us will understand.  
Nothing passes among us undetected.  
I am a Police Service Dog.  
We are guardians of the night.**

# COMMITTED TO PROFESSIONALISM

## HEROIC OFFICERS RECEIVE CITATIONS

At a ceremony held on November 4 at EPS Headquarters, the Royal Canadian Humane Association presented 24 citizens with awards to recognize exceptional acts of bravery and lifesaving while under duress. Among those receiving acknowledgement were seven EPS members: Constables Jess Bagan, Duane Bateman, Mike Furman, Alex Karampelas, Rich Leggatt, Taylor McCrudden, and David Webber.

In May 2013, Constables Bagan and Leggatt were working in west Edmonton when they noticed smoke coming from two nearby houses. Both officers went into the homes to ensure they were empty. For their actions in warning occupants of the danger, the two officers were awarded the Bronze Medal for Bravery.

In the summer of 2013, a vehicle was travelling on Anthony Henday Drive when it drove off the road and landed into a pond. Constables Bateman, Karampelas, and Webber entered the deep, cold and murky waters and, after several attempts to find the driver, brought him back to shore. For their efforts, the three officers were awarded the Bronze Medal for Bravery.

In late spring 2013, Constable McCrudden attempted to stop a vehicle operating without headlights in downtown Edmonton, when the driver lost control and the car slammed into a tree. Constable Furman arrived at the collision scene and when he opened the driver's door to provide medical aid, the vehicle caught fire. Constables Furman and McCrudden were able to extract the unconscious driver from the car that was now engulfed in flames. For risking their lives to save another, the two officers were awarded the Bronze Medal for Bravery.



COMMITTED TO  
PROFESSIONALISM

REDUCED CRIME AND  
VICTIMIZATION

INVESTIGATIVE EXCELLENCE

INCREASED EFFICIENCY  
AND EFFECTIVENESS

APPENDICES

COMMITTED TO  
PROFESSIONALISM

REDUCED CRIME AND  
VICTIMIZATION

INVESTIGATIVE EXCELLENCE

INCREASED EFFICIENCY  
AND EFFECTIVENESS

APPENDICES

## CITIZEN RECOGNIZED BY SOUTHEAST DIVISION FOR HELPING LOCATE MISSING SENIOR

On October 1, 2013, Southeast Division officers were involved in a search for an elderly male who had wandered away from his residence. The man had a history of dementia and his family was unsure when he had left the home. They believed him to be lost and without adequate clothing for the cold temperatures.

While on his daily walk, Mr. Ted Marchesi, a retired teacher, ran into a former student who mentioned he was looking for his missing father. While police were conducting their investigation, Mr. Marchesi approached police vehicles parked in the area and asked if he could be of any help. It was clear that Mr. Marchesi had been searching the area on his bicycle and wished to continue to assisting, so the officers asked him to call police if he spotted the man.

Mr. Marchesi came across the missing male at approximately 10:30 a.m., standing at a street corner, confused and disorientated. He contacted police and stayed with the senior until he was reunited with his family.

Although he knew the family, he had never met the missing male and was acting solely as a concerned citizen. Mr. Marchesi spent over an hour of his personal time biking on a cold morning, searching for an individual he did not know.

"It's part of being a citizen," said Mr. Marchesi. "You help where you can."



*Ted Marchesi was recognized by Superintendent David Veitch at a divisional parade.*

## EPS CADETS SUPPORT SANTA'S ANONYMOUS

Two weeks before Christmas, more than 40 EPS cadets, streamed through the doors of a local Toys R Us. The cadets gathered near the front door and waited for Constable Shannon Tenney's go-ahead to proceed with shopping.

"The cadets have a tradition of exchanging gifts with each other at Christmas time. This year, we all agreed that we'd try something new and decided to buy toys for Santa's Anonymous instead," noted Constable Tenney.

The cadets purchased the toys using their own money. "Our Cadets are happy to give back to the community. They're outstanding ambassadors for the Edmonton Police Service and take great pride in wearing EPS cadet uniforms."

The cadet program is open to youth ages 13–20 who are interested in pursuing a career in law enforcement. Check out [edmontonpolice.ca](http://edmontonpolice.ca) for more information on the program.



# REDUCED CRIME AND VICTIMIZATION

## EPS LAUNCHES 20TH ANNIVERSARY STOP THIEF CAMPAIGN

When holiday shopping season begins and vehicles are filled with presents and high value items, criminals often window shop in parking lots looking for easy targets.

On November 27, the EPS and Alberta Motor Association (AMA) launched their holiday season crime prevention campaign, reminding Edmontonians to lock their vehicles and hide their valuables.

"We wanted Edmontonians to have a safe and happy holiday season," explained West Division Constable Tom Froma. "Often we provide the public with tips to avoid being victimized, but for the 20th anniversary of the Stop Thief campaign, we wanted to give tips in a lighthearted way, while still delivering an important message."

In December 2013 there were 406 reported theft from vehicle incidents, compared with 392 occurrences in December 2012, an increase of 3.6 per cent.

The Stop Thief campaign included a 30-second commercial that featured an entertainer and three back-up singers performing to the tune of Sleigh Bells Jangling.

### Lyrics:

*Just hear those windows smashin' and dashboards crackin'.  
(yoo hoo)*

*Outside there's someone waitin' to make a victim of you.*

*They stole your GPS, your phone and presents, too.*

*It could have been avoided but you left your stuff in plain view.*

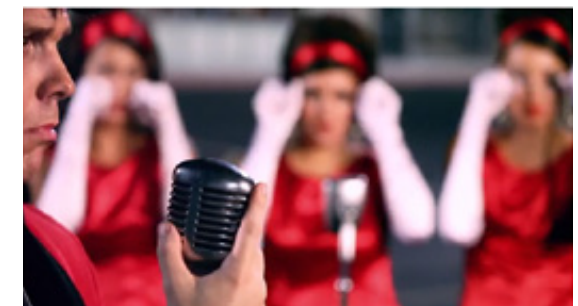
*Giddy up, giddy up, giddy up, let's go.*

*They call the po-po. (five-oh)*

*Where your stuff will end up, we'll never know.*

*Giddy up, giddy up, giddy up, too bad.*

*It's gone and you're sad.*



COMMITTED TO  
PROFESSIONALISM

REDUCED CRIME AND  
VICTIMIZATION

INVESTIGATIVE EXCELLENCE

INCREASED EFFICIENCY  
AND EFFECTIVENESS

APPENDICES

COMMITTED TO  
PROFESSIONALISM

REDUCED CRIME AND  
VICTIMIZATION

INVESTIGATIVE EXCELLENCE

INCREASED EFFICIENCY  
AND EFFECTIVENESS

APPENDICES

## 'DIRTY LITTLE SECRET' NOT SO SECRET ANYMORE

On Monday, October 28, the Sexual Exploitation Working Group (SEWG) launched its Dirty Little Secret: Speak Out Against Sexual Exploitation campaign and film at police headquarters.

The short YouTube video shares a dirty little secret: sexual exploitation is an issue that touches every community. The impact is wide-ranging, affecting safety, health and wellness, and economic prosperity.

Staff Sergeant Jerry Nash, a member of the EPS Vice Section and SEWG, said EPS's approach is to attack the demand side of the issue, going after the consumers and exploiters, not the victims. In the video, Staff Sergeant Nash challenges all men to speak out against sexual exploitation.

"It's going to take men becoming role models and mentors, teaching their sons, nephews, and brothers that this is what it takes to stop sexual exploitation," said Staff Sergeant Nash. "It's about getting involved and making a stand and saying it is not acceptable behaviour to buy sex."

SEWG is using social media to encourage discussion about the issue and to share another little secret: that there is hope - sexual exploitation can be stopped. The group wants the public to speak out, share the video, and visit [dlsfilm.com](http://dlsfilm.com).



Members of SEWG gathered at police headquarters to launch the video, Dirty Little Secret.

## ART IN THE ALLEYS RECLAIMS FORGOTTEN SPACE

In early November, local artist Jill Thomson unveiled the first installation of the Art in the Alleys project. Part of the Alberta Avenue arts revolution, the project intends to reclaim alleys in the 118 Avenue area as community space by making them more attractive and inspirational. The group believes more foot traffic in the alleys will ultimately reduce crime.

The project builds on the success of Eyes on the Alley, a Neighbourhood Empowerment Team (NET) initiative that saw the faces of community residents depicted in photos on dumpsters. The alley was transformed into an urban art gallery of sorts and less crime was reported in that area.

NET, Avenue Revitalization Initiative, Alberta Avenue Business Association, Arts on the Avenue and the residents of the community participated in the event.



Jill Thomson is an Edmonton-based artist who has worked with the Nina Haggerty Centre for the Arts on an exhibition of paintings featuring scenes photographed in the 118 Avenue neighbourhood.

COMMITTED TO PROFESSIONALISM

REDUCED CRIME AND VICTIMIZATION

INVESTIGATIVE EXCELLENCE

INCREASED EFFICIENCY AND EFFECTIVENESS

APPENDICES

### HARD TARGET TEACHES PREVENTION AND DEFENCE

EPS held a one-day personal safety course in December that prepared participants to be a hard target for criminals to prey upon.

The full day "Hard Target" course is designed to educate men and women on how to protect themselves in various situations. Hard Target blends crime prevention and personal safety tips with basic self defence techniques.

Acting Sergeant Lawley, the lead instructor, based the course on the philosophy of making informed security decisions about yourself and your belongings to lessen the chance of a criminal considering you an easy target. In addition, simple defensive manoeuvres are taught to create opportunities for escape in the event an altercation with a criminal turns physical.

"Those who have taken part in Hard Target - over 600 people since its inception in 2011 - have found the course to be interactive, dynamic and held in a highly enjoyable and safe environment," said

Acting Sergeant Lawley. "Participants walk away with an enhanced sense of confidence, safety and security."

The course resonated with participants on another level, as well. "I believe the course creates a very positive connection between police and the public, and provides EPS with an opportunity to speak with participants about crime prevention and personal safety," said one participant.

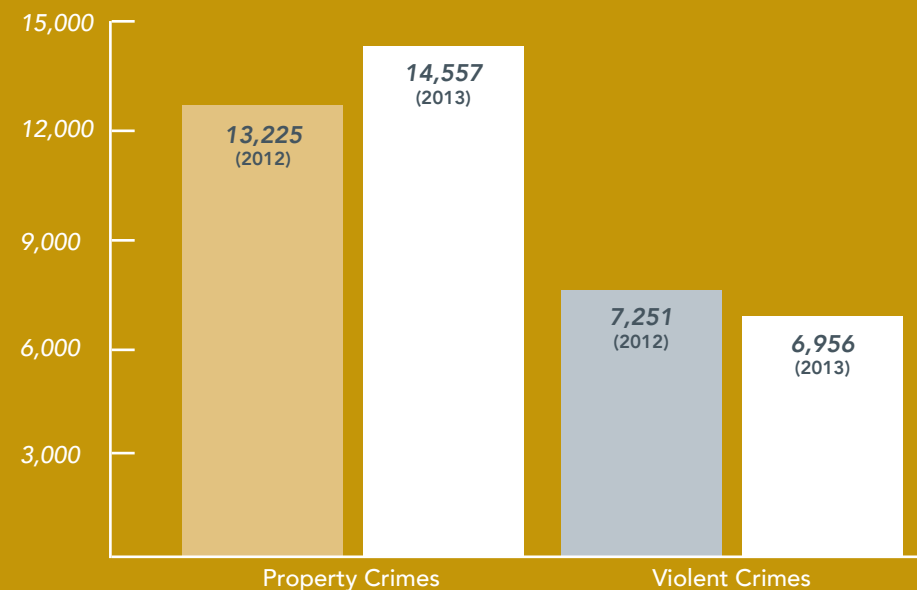
Acting Sergeant Lawley and his training team, made up of fellow officers and professional trainers, have dedicated thousands of hours to empowering citizens and providing a fun learning environment that has real-world skills with immediate benefits.

For further information on the course, go to [hardtarget.ca](http://hardtarget.ca).

The eight hour course was held at Griesbach Training Centre for a minimum donation of a gift for Santa's Anonymous.



### OVERALL CRIME IN THE EIGHT CRIME INDICATORS 2012 AND 2013 YEAR-TO-DATE COMPARISONS



In the fourth quarter of 2013, violent crimes decreased by 4.1 per cent, while property crimes increased by 10.1 per cent. Overall, there was a 5.1 per cent increase in the eight crime indicators.

### THE EIGHT CRIME INDICATORS ARE:

#### VIOLENT CRIMES

- Homicide
- Assault
- Sexual assault
- Robbery

#### PROPERTY CRIMES

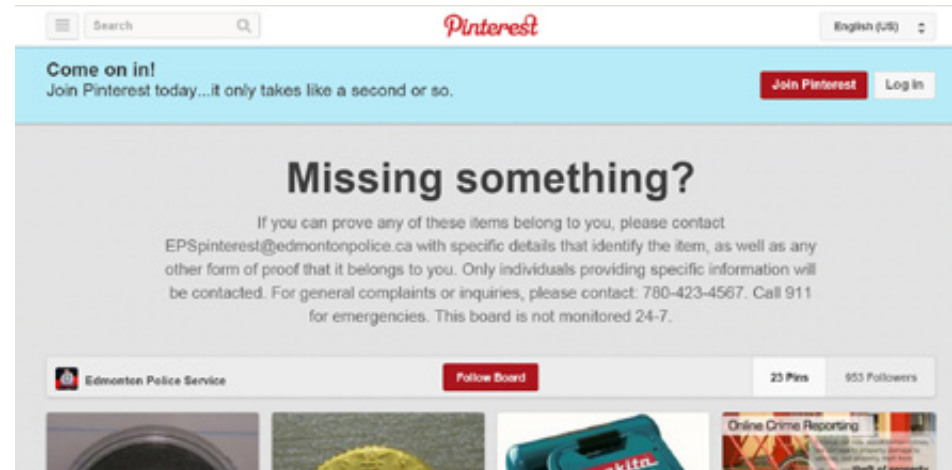
- Break and enter
- Theft from vehicle
- Theft of vehicle
- Theft over \$5,000

The eight crime indicators are measured daily and the data is used to focus on criminal activity and identify trends, patterns, and hot spots in Edmonton. Police resources are then deployed to address emerging and enduring crime and disorder issues. Violent crimes statistics are based on victims of crime, not occurrences of crime.



# INVESTIGATIVE EXCELLENCE

## PINTEREST USED AS TOOL TO RETURN STOLEN PROPERTY



EPS launched its new Pinterest site in late December with the objective of returning stolen property to its rightful owner.

The impetus for the idea was generated, in part, by the largest seizure of stolen property recorded in EPS history, which culminated in the arrest of a man who is now facing more than 200 theft and weapon-related charges.

"We wanted to provide another way to help reunite people with their stolen items, some of which could be family heirlooms that have not only monetary worth to citizens, but sentimental value as well," said Carolin Maran, EPS Web and Social Media Coordinator.

Police officers will post a selection of seized items to the Pinterest site, which citizens can lay claim to by clicking on the respective email link posted below the photo. Members of the public will have to provide specific details that identify the item, as well as additional forms of proof that the item belongs to them.

Only individuals providing proof of ownership will be contacted by police.

As of the end of December, there were 960 followers of the EPS Pinterest site.

*"We're going to give it a try over time and monitor the results and feedback."*

## SPECIALIZED TRAFFIC TEAMS FULLY OPERATIONAL

Traffic has consistently been one of the biggest concerns for the citizens of Edmonton. By enforcing traffic laws and using skills to hone in on other potential crimes during a vehicle stop, the EPS can deal with chronic traffic violators while reducing further crime and victimization in other areas.

The first Specialized Traffic Apprehension Team (STAT) became operational in July 2012. By the end of September 2013, the fourth and final team was up and running. Using information from several sources, including data from the City of Edmonton's Office of Traffic Safety, the teams focus their attention on chronic traffic violators and high-risk locations.

Through reactive and proactive activities, several noteworthy arrests have occurred. In one case, a person was stopped for

using a cell phone while driving. Further investigation led to the discovery of over one kilogram of cocaine and a substantial amount of cash. Six criminal charges were laid along with a distracted driving ticket.

In a separate case, a suspected suspended driver was referred to STAT for intervention. Investigations linked him to the theft of heavy equipment in and around Edmonton, resulting in the recovery of over \$140,000 in stolen property.

STAT also arrested a man who was allegedly involved in nine road rage incidents. His vehicle was seized for civil forfeiture, becoming the first case in Canada in which a road rage subject's vehicle was seized under the Victims Restitution and Compensation Payment Act.

### STAT NUMBERS FROM JANUARY 1 TO DECEMBER 31, 2013:

ARRESTS: 991

CRIMINAL CHARGES: 1,085

WARRANTS EXECUTED: 1,303

SUMMONSES: 15,336

COCAINE: 1,890 GRAMS (\$123,000)

MARIJUANA: 6,320 GRAMS (\$78,000)

STOLEN VEHICLES: 31 VEHICLES (\$460,000)

CASH: \$55,000

# INCREASED EFFICIENCY AND EFFECTIVENESS

COMMITTED TO  
PROFESSIONALISM

REDUCED CRIME AND  
VICTIMIZATION

INVESTIGATIVE EXCELLENCE

INCREASED EFFICIENCY  
AND EFFECTIVENESS

APPENDICES

## 2014 BUDGET ALLOWS FOR 35 NEW EMPLOYEES, PRISONER TRANSPORT

The Edmonton Police Commission and Edmonton Police Service presented the 2014 budget package to City Council on Monday, December 2. A few days later, Council passed the overall City of Edmonton budget, and the police budget package was accepted in its entirety.

The 2014 budget will address unavoidable issues like prisoner transport, fill in some critical operational gaps in specialized areas, and put additional officers on the street. Both the Commission and the EPS recognize the fiscal constraints facing the city. The 2014 budget acknowledges those constraints while maintaining a safe workplace for employees and providing adequate services to the citizens of Edmonton.

In a 24-hour a day operation, 35 new positions is not a lot, especially when there are several key areas that need improvement such as response times and crime reduction. It's very easy to rely entirely on additional resources to solve problems, but that's not always possible, nor is it always the best tactic.

That's why the Commission supports the EPS's comprehensive strategy that includes the addition of staff coupled with rethinking the way it does its core business.

"As members of the Commission, it is important that we see the Service being led wisely, ethically, and responsibly," says Commission Chair Shami Sandhu. "Looking at ways to reduce officer wait times in hospitals and calling on social agencies to play a greater role in dealing with mental health issues are just two examples of working toward bringing police officers back to the essentials of their job: prevention, intervention and suppression of crime."

Over the last year, all divisions took a hard look at their services and more than \$5 million was reallocated internally. While some programs came to an end (for example, the closure of three front-counter operations), programs such as online crime reporting were created.

*"We want to ensure the services the EPS provides are in fact services that the citizens need and use," says Chair Sandhu.*

## SOUTHWEST STATION NOMINATED FOR AWARD

EPS's new Southwest Division Station is one of seven finalists across the province nominated for Alberta Construction Magazine's 2013 Top Projects Awards.

Award judges noted that the building was selected as a finalist for its design which has a "dual purpose to offer a space that, while functioning as a police station, could also provide a location for community events."

Judges also recognized the new police facility for incorporating sustainable features like "sunshades on windows, energy-efficient glazing, full membrane air/vapour barrier, natural day lighting and high-efficiency light fixtures."

The winner will be announced in an upcoming issue of Alberta Construction Magazine.



COMMITTED TO  
PROFESSIONALISM

REDUCED CRIME AND  
VICTIMIZATION

INVESTIGATIVE EXCELLENCE

INCREASED EFFICIENCY  
AND EFFECTIVENESS

APPENDICES

## HOSPITAL WAIT TIMES IMPACT OFFICER RESPONSE

The amount of time officers spend waiting in hospitals with detainees has a direct impact on the Service's ability to respond to other important calls for service. That's why the EPS is looking at ways to get patrol officers back on the streets more quickly.

Whenever someone who has been arrested requires medical attention, from minor injuries to severe, the EPS must ensure the person receives adequate medical care. This means that officers must take the individual to a medical facility where they often spend hours waiting for treatment.

"It's an ineffective use of police resources and training, it takes police off the street, and increases response times which have a direct impact on public and officer safety," says EPS Chief Rod Knecht. "In addition, there is a quantifiable financial impact on the City of Edmonton."

For three months starting in August, EPS officers were asked to record the type of incident and number of hours spent waiting in hospitals. Although it was voluntary

participation on behalf of the officers – meaning all hospital visits were not reported to the project coordinator – 390 hospital visits were logged, totaling 1,438.25 hours. This equates to:

- 130.75 eleven-hour shifts;
- \$1,095 per day;
- \$100,678 from August – October; and
- Projected 12 month cost of \$401,500.

"If there's a way to provide medical care without tying up valuable time in hospitals, it's a win for the EPS, Edmontonians, hospital staff, and other patients waiting for treatment," says Chief Knecht.

Downtown Division is currently working with Alberta Health Services (AHS) to direct officers to the least busy emergency rooms. Plans are underway to begin discussions with the Royal Alexandra Hospital and AHS around options to help reduce hospital wait times.



# APPENDICES

## EPS STAFF COMPLEMENT

### SWORN, NON-SWORN AND RECRUITS

| STAFF           | 2013 AUTHORIZED FTE'S | 2013 FTE'S AS OF 2013 DEC 31 | VACANCIES (OVER STRENGTH) |
|-----------------|-----------------------|------------------------------|---------------------------|
| SWORN           | 1,632.0               | 1,592.8                      | 39.2                      |
| RECRUITS        | 0.0                   | 56.0                         | (56.0)                    |
| NON-SWORN       | 671.5                 | 674.1                        | (2.6)                     |
| FULL COMPLEMENT | 2,303.5               | 2,322.9                      | (19.4)                    |

The authorized FTE's represent 2,303.50 authorized positions in 2013

## OTHER COMMISSION AND EPS PUBLICATIONS

The Edmonton Police Commission and the Edmonton Police Service publish a number of reports that provide further details on policing in Edmonton.

| OPERATIONAL AREA             | PUBLICATION                                 |
|------------------------------|---------------------------------------------|
| Performance Measurement      | Annual Policing Plan                        |
| Performance Results          | Annual Policing Plan Report Card            |
| Complaints Against EPS       | Professional Standards Branch Annual Report |
| Citizen Opinions on Policing | Citizen Survey                              |

All publications can be found at [www.edmontonpolicecommission.ca](http://www.edmontonpolicecommission.ca) and [www.edmontonpolice.ca](http://www.edmontonpolice.ca)

COMMITTED TO  
PROFESSIONALISM

REDUCED CRIME AND  
VICTIMIZATION

INVESTIGATIVE EXCELLENCE

INCREASED EFFICIENCY  
AND EFFECTIVENESS

APPENDICES

# APPENDICES

## FINANCIALS

### BUDGET VARIANCE BY MAJOR CATEGORY OF REVENUES & EXPENDITURES FOR THE PERIOD ENDING DECEMBER 31, 2013 (\$000'S)

|                                                               | 2013 YEAR END    |                  |                |              |
|---------------------------------------------------------------|------------------|------------------|----------------|--------------|
|                                                               | BUDGET           | ACTUAL           | VARIANCE       | %            |
| <b>REVENUE</b>                                                |                  |                  |                |              |
| Traffic Safety Act Fines                                      | \$16,158         | \$12,479         | \$(3,679)      | -22.8%       |
| Provincial Grants                                             | 23,580           | 23,580           | -              | 0.0%         |
| Other Revenue                                                 | 27,179           | 27,750           | 571            | 2.1%         |
| <b>TOTAL REVENUE</b>                                          | <b>66,917</b>    | <b>63,809</b>    | <b>(3,108)</b> | <b>-4.6%</b> |
| <b>EXPENDITURES</b>                                           |                  |                  |                |              |
| <b>PERSONNEL</b>                                              |                  |                  |                |              |
| Salary and benefits                                           | 270,370          | 266,738          | 3,632          | 1.3%         |
| EPS Overtime                                                  | 10,038           | 10,120           | (82)           | -0.8%        |
| External Overtime                                             | 432              | 732              | (300)          | -69.4%       |
|                                                               | <b>280,840</b>   | <b>277,590</b>   | <b>3,250</b>   | <b>1.2%</b>  |
| <b>NON-PERSONNEL</b>                                          |                  |                  |                |              |
| Furniture, equipment, IT, materials and supplies              | 10,892           | 12,516           | (1,624)        | -14.9%       |
| Contracts and services                                        | 20,161           | 20,347           | (186)          | -0.9%        |
| Vehicles                                                      | 7,688            | 7,600            | 88             | 1.1%         |
| Facilities                                                    | 15,811           | 14,918           | 893            | 5.6%         |
| Other                                                         | 8,758            | 8,455            | 303            | 3.5%         |
|                                                               | <b>63,310</b>    | <b>63,836</b>    | <b>(526)</b>   | <b>-0.8%</b> |
| <b>TOTAL EXPENDITURES</b>                                     | <b>344,150</b>   | <b>341,426</b>   | <b>2,724</b>   | <b>0.8%</b>  |
| <b>NET POSITION</b>                                           | <b>\$277,233</b> | <b>\$277,617</b> | <b>\$(384)</b> | <b>-0.1%</b> |
| Tangible Capital Asset Purchases funded from Operating Budget | -                | 287              | (287)          |              |
| <b>NET POSITION</b>                                           | <b>\$277,233</b> | <b>\$277,904</b> | <b>\$(671)</b> | <b>-0.2%</b> |

COMMITTED TO  
PROFESSIONALISM

REDUCED CRIME AND  
VICTIMIZATION

INVESTIGATIVE EXCELLENCE

INCREASED EFFICIENCY  
AND EFFECTIVENESS

APPENDICES