



## ARCHIVED - Archiving Content

### Archived Content

Information identified as archived is provided for reference, research or recordkeeping purposes. It is not subject to the Government of Canada Web Standards and has not been altered or updated since it was archived. Please contact us to request a format other than those available.

## ARCHIVÉE - Contenu archivé

### Contenu archivé

L'information dont il est indiqué qu'elle est archivée est fournie à des fins de référence, de recherche ou de tenue de documents. Elle n'est pas assujettie aux normes Web du gouvernement du Canada et elle n'a pas été modifiée ou mise à jour depuis son archivage. Pour obtenir cette information dans un autre format, veuillez communiquer avec nous.

This document is archival in nature and is intended for those who wish to consult archival documents made available from the collection of Public Safety Canada.

Some of these documents are available in only one official language. Translation, to be provided by Public Safety Canada, is available upon request.

Le présent document a une valeur archivistique et fait partie des documents d'archives rendus disponibles par Sécurité publique Canada à ceux qui souhaitent consulter ces documents issus de sa collection.

Certains de ces documents ne sont disponibles que dans une langue officielle. Sécurité publique Canada fournira une traduction sur demande.

**2011**

**ANNUAL STATISTICAL REPORT**



**TORONTO POLICE SERVICE**



## TABLE OF CONTENTS

<b>GLOSSARY OF TERMS</b>	1
<b>INTRODUCTION AND HIGHLIGHTS</b>	3
<b>STATISTICS AT A GLANCE</b>	4
<b>PERSONNEL AND BUDGET</b>	
UNIFORM STRENGTH, EXPENDITURES & DISTRIBUTION	5
GROSS OPERATING BUDGET	5
POLICE PERSONNEL BY RANK AND CLASSIFICATION	6
POLICE PERSONNEL BY DIVISION AND FIELD COMMAND	7
<b>COMMUNICATIONS</b>	
CALLS RECEIVED AT COMMUNICATIONS CENTRE	8
CLASSIFICATIONS OF INCOMING CALLS (CALLS FOR SERVICE)	8
AT&T LANGUAGE LINE SERVICE	8
ALARM CALLS	8
<b>MISCELLANEOUS STATS</b>	
COMMUNITY BASED POLICING	9
MAJOR CULTURAL AND OTHER EVENTS	9
INDUSTRIAL LIAISONS	9
HATE/BIAS	10
CRIME STOPPERS	10
TRANSGENDER SEARCHES	10
WOMEN PARTIALLY/COMPLETE UNDRESS	10
FLEET	10
<b>COMPLAINTS AGAINST POLICE</b>	
COMPLAINTS INVESTIGATED	11
ALLEGATION TYPE	11
INVESTIGATION OUTCOME	11
<b>GENERAL DATA BY DIVISION AND COMMAND</b>	
POPULATION/EXPENDITURE/SIZE	12
DISPATCHED CALLS FOR SERVICE	12
STOLEN/RECOVERED VEHICLES	12
STOLEN BICYCLES	12
<b>GENERAL CRIME INFORMATION TOTALS</b>	
TOTAL CRIMINAL CODE	13
HOMICIDES	13
ROBBERIES (FINANCIAL INSTITUTIONS)	13
BREAK AND ENTERS	14
SEXUAL ASSAULTS	15
NONSEXUAL ASSAULTS	15
ROBBERIES (INCLUDING FINANCIAL)	15
<b>CRIMES REPORTED BY CATEGORY OVER LAST FIVE YEARS</b>	16
<b>CRIMES REPORTED BY CATEGORY BY UNIT</b>	17
<b>OFFENCE TOTALS BY VICTIM AGE AND GENDER</b>	
SEXUAL ASSAULTS	18
NONSEXUAL ASSAULTS	18
ALL ROBBERIES	18
ALL VIOLENT OFFENCES	19
<b>SELECTED OFFENCES AGAINST POLICE</b>	19
<b>PERSONS CHARGED BY ACCUSED AGE AND GENDER</b>	
ALL VIOLENT OFFENCES	19

## TABLE OF CONTENTS

BREAK AND ENTER	20
NONSEXUAL ASSAULTS	20
SEXUAL ASSAULTS	20
ROBBERY	21
CONTROLLED DRUGS AND SUBSTANCES ACT	21
DRINKING AND DRIVING	21
<b>CRIMINAL CODE OFFENCES REPORTED AND CLEARED</b>	
COMMAND AND SERVICE TOTALS	22
CENTRAL FIELD	
11-14 DIVISION	23
51-55 DIVISION	24
AREA FIELD	
22-23 DIVISION	25
31-33 DIVISION	25
41-43 DIVISION	26
<b>TRAFFIC COLLISIONS AND OFFENCES</b>	
COLLISIONS	27
FATALITIES	27
PERSONS INJURED	27
PROPERTY DAMAGE	
PERSONS CHARGED AND R.I.D.E DATA	
CRIMINAL CODE DRIVING OFFENCES BY UNIT	28
R.I.D.E. INFORMATION	28
CRIMINAL CODE DRIVING OFFENCES BY ACCUSED AGE AND GENDER	29
<b>PERSONS CHARGED/CHARGES LAID</b>	
CRIMINAL CODE/ FEDERAL STATUTE CHARGES LAID BY UNIT	30
PROVINCIAL OFFENCE AND BYLAWS CHARGES LAID BY UNIT	31
<b>FIREARM SEIZURES AND THEFTS</b>	
SEIZURES	32
REPORTED STOLEN	32
THEFTS BY PREMISE TYPE	32
CRIME GUN FIREARM TYPE	33
CRIME GUN FIREARM CLASSIFICATION	33
STOLEN FIREARMS – RECOVERED BY TORONTO POLICE SERVICE	33
TOP 10 MANUFACTURERS BY FIREARM TYPE	34
TOP 5 CALIBRES BY FIREARM TYPE	34
TYPES OF FIREARMS STOLEN AND RECOVERED IN TORONTO	34
TOP 20 OFFENCES RELATED TO FIREARMS SEIZED	35
SHOOTING LOCATIONS	35
FIREARMS CLASSIFICATION DEFINITIONS	Appendix A

## GLOSSARY OF TERMS

**% Change:**

The percent increase or decrease from the previous year.

**% Clear:**

The percentage of offences reported in a given year which have been cleared.

**Adult:**

A person who is 18 years of age or greater.

**A.F.C.:**

Area Field Command

**C.F.C.:**

Central Field Command

**Cleared:**

An offence can be considered cleared when a charge is laid, recommended or the person(s) who committed

**Crime Gun:**

The National Weapons Enforcement Support Team (NWEST) defines a crime gun as “any firearm that is illegally possessed, used in crime or suspected to have been used in a crime, or has an obliterated serial

**Criminal Code Traffic Offences:**

Includes dangerous driving, impaired driving, refuse breath/blood sample and failure to remain at the scene

**Drug Offences:**

Involves offenders under the Controlled Drugs and Substances Act. These offences include possession, trafficking, import/export, and production of various illicit, controlled and restricted drugs.

**Municipal Bylaws:**

Includes violations under the City of Toronto Municipal By-Laws.

**NSA:**

Not Specified Area. Generally these relate to offences that have been reported to the Service but occurred

**Offence:**

An offence is categorized as a violation against any Federal, Provincial or Municipal statute/by-law.

**Other Criminal Code Offences:**

Any other Criminal Code offences. For example bail violations, arson, and disturbing the peace are

**Other Federal Statutes:**

Any Federal statute other than the Criminal Code and Controlled Drugs and Substances Act..

## GLOSSARY OF TERMS

**Persons Charged:**

A person that is arrested and/or charged with an offence.

**Property Offences:**

Property crime includes unlawful acts committed for the purpose of attaining or interfering with the use of property, but does not involve the use or threat of violence against an individual. Property crime includes

**Provincial Acts:**

Includes all violations under Provincial statutes with the exception of traffic related statutes. Some examples include the Coroner's Act, Environmental Protection Act, Mental Health Act and the Liquor

**Rate:**

Rate of crime per 100,000 population.

**Reported:**

Number of Offences Reported.

**Violent Offences:**

Crimes involving the application or threat of application of force to a person. They include homicide, attempted murder, sexual assault, non-sexual assault, other sexual offences, abduction and robbery.

**Young Offender:**

A Person who is between 12 and 17 years of age.

## INTRODUCTION AND HIGHLIGHTS

### Source Data:

The crime related data contained in this report are derived from a number of computer sources. These systems include, but are not limited to:

eCOPS	-	Enterprise Case Occurrence Processing System
COPS	-	Computerized Occurrence Processing System
CIPS	-	Criminal Information Processing System

These systems are continuously being updated and as a result some changes to statistics published in previous statistical reports should be expected.

Crime statistics contained in this report are based on the date that the information was reported or became known to police. This is done to minimize changes in reported statistics year over year and to enable some degree of comparability with statistics reported by Statistics Canada.

Other data comes from a mixture of automated and manual systems maintained by the individual units responsible.

### Comparing Crime Statistics:

The statistics in this report count all offences reported to the police. As a result, a single incident reported to police may generate more than one offence.

It is not recommended that the crime statistics in this report be compared to crime statistics prepared by other agencies due to the fact that different methods of categorization, geographic, technical, data and time constraints may affect the outcome.

Although comparing exact numbers is not recommended, the general trends and magnitude of change should be similar regardless of the counting method.

Detailed information pertaining to Statistics Canada crime reporting method can be found in the Uniform Crime Reporting Survey documents posted on the Statistics Canada website, <http://www.statcan.gc.ca>.

### Highlights:

- Total reported crime decreased by approximately 5.6% (6,830 offences), decreasing from 170,974 in 2010 to 164,144 in 2011.
- Murders have decreased by approximately 22% (14 homicides), decreasing from 63 in 2010 to 49 in 2011.
- Violent Crime Against Person decreased by approximately 0.9% (296 offences), decreasing from 31,628 in 2010 to 31,332 in 2011
- Sexual Assaults have increased by approximately 3.9% (112 offences), increasing from 2,849 in 2010 to 2,961 in 2011.
- Motor Vehicles reported stolen decreased by approximately 8% (359 vehicles), decreasing from 4,501 in 2010 to 4,142 in 2011.
- Charges laid by RIDE have increased by approximately 5.2% (21 charges), increasing from 406 in 2010 to 427 in 2011.



## STATISTICS AT A GLANCE

Total Criminal Code (including Traffic)			
2010	2011	Change	%
170,974	164,144	-6,830	-4.0

Crimes Against Person			
Violent Crime			
2010	2011	Change	%
31,628	31,332	-296	-0.9

Crimes Related to Property			
Property Crime			
2010	2011	Change	%
94,819	91,349	-3,470	-3.7

Traffic Related Information			
Collisions (Fatalities)			
2010	2011	Change	%
42	35	-7	-16.7

Homicides'			
2010	2011	Change	%
63	49	-14	-22.2

Break and Enter (House) ***			
2010	2011	Change	%
5,540	5,136	-404	-7.3

Collisions (Injury)			
2010	2011	Change	%
11,883	10,539	-1,344	-11.3

Sexual Assaults*			
2010	2011	Change	%
2,849	2,961	112	3.9

Break and Enter (Apartment) ***			
2010	2011	Change	%
3,240	2,906	-334	-10.3

Collisions (Property Damage)			
2010	2011	Change	%
43,020	42,677	-343	-0.8

Non-Sexual			
2010	2011	Change	%
22,840	22,705	-135	-0.6

Break and Enter (Business) ***			
2010	2011	Change	%
3,077	2,854	-223	-7.2

Criminal Code Traffic			
2010	2011	Change	%
4,020	3,955	-65	-1.6

Robberies (Financial)			
2010	2011	Change	%
130	150	20	15.4

Stolen Vehicles			
2010	2011	Change	%
4,501	4,142	-359	-8.0

R.I.D.E Vehicles Stopped			
2010	2011	Change	%
398,526	430,520	31,994	8.0

Robberies (Other)			
2010	2011	Change	%
5,079	5,177	98	1.9

Other Crime**			
2010	2011	Change	%
40,507	37,508	-2,999	-7.4

R.I.D.E. Charges Laid****			
2010	2011	Change	%
406	427	21	5.2

\*Includes "non-assaultive" sexual offences (e.g. Invitation to Sexual Touching, Sexual Exploitation etc)

\*\*Other Crime refers to offences that do not fall under the category of Violent, Property, or Criminal Code Traffic

\*\*\*In this report: Includes attempt break and enter

\*\*\*\*Charges Laid defined as all instances where a CIPS offence is linked to a specific person.

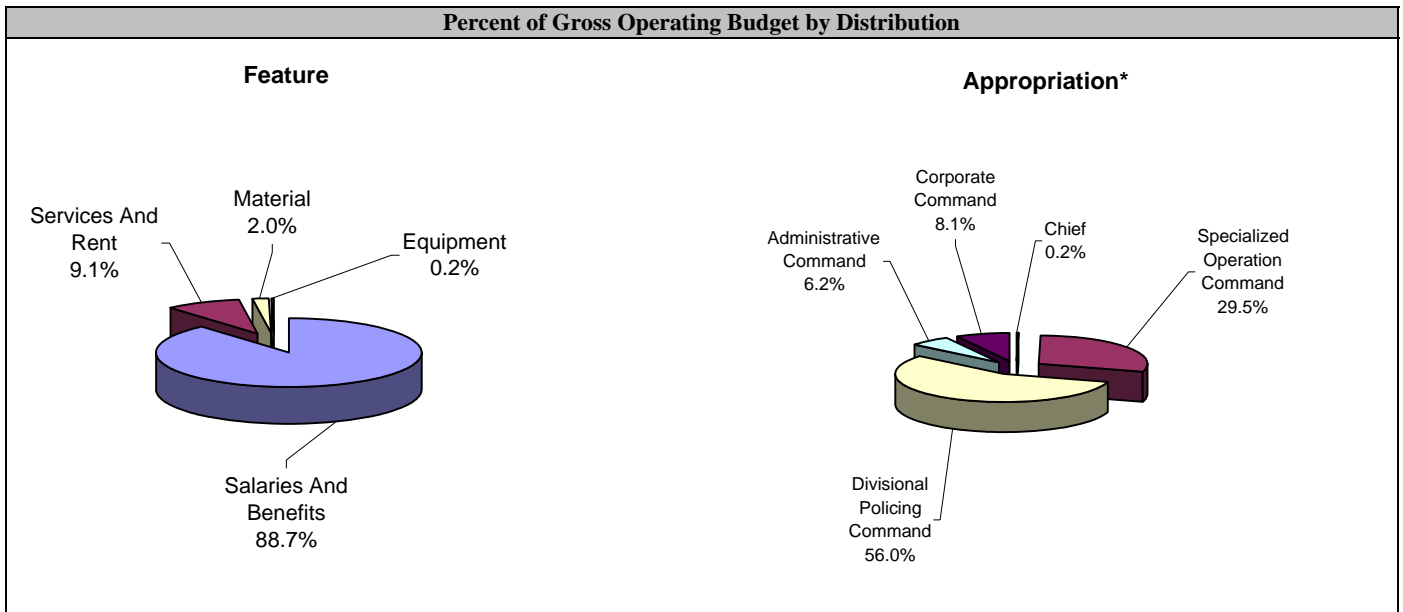
'Homicide numbers as of the March 30, 2012 run date

**PERSONNEL AND BUDGET**

<b>Uniform Strength and Expenditures</b>					
	<b>2007</b>	<b>2008</b>	<b>2009</b>	<b>2010</b>	<b>2011</b>
Population Served	2,750,360	2,776,175	2,802,233	2,828,537	2,855,085
Uniform Strength	5,557	5,457	5,651	5,636	5,629
Uniform Strength:Population	1:495	1:509	1:496	1:502	1:507
Actual Expenditures	829,038,200	881,825,300	924,443,954	956,903,200	996,590,951
Per Capita Cost*	301.4	317.6	329.9	338.3	349.1

\* Estimate (based on projected expenditures).

<b>Gross Operating Budget</b>			
<b>Year</b>	<b>Budget (\$)</b>	<b>Change (\$)</b>	<b>% Change</b>
2007	829,038,200	38,072,500	4.8
2008	881,825,300	52,787,100	6.4
2009	917,066,700	35,241,400	4.0
2010	956,903,200	39,836,500	4.3
2011	1,000,778,700	43,875,500	4.6



\* Percentages reflect the new organizational structure approved on October 5, 2011  
 Human Resource Management and Executive Command were combined to form the new Corporate Command.  
 In 2010, Human Resource Command constituted 4.4% and Executive Command 4.4% of the budget.

**PERSONNEL AND BUDGET**

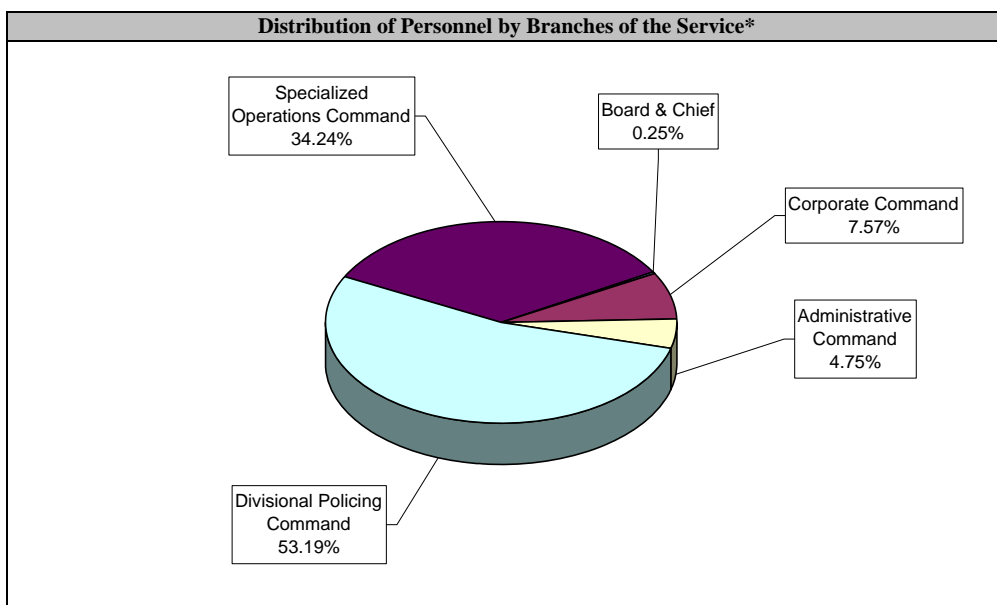
<b>Uniform Staff</b>					
<b>Rank</b>	<b>2007</b>	<b>2008</b>	<b>2009</b>	<b>2010</b>	<b>2011</b>
Chief	1	1	1	1	1
Deputy Chief	4	4	4	4	2
Staff Superintendent	6	6	6	6	5
Superintendent	24	23	24	23	21
Staff Inspector	23	21	20	22	16
Inspector	41	43	46	45	38
Staff Sergeant/Detective Sergeant	275	268	274	269	269
Sergeant/Detective	948	959	986	998	995
Police Constable	4,235	4,132	4,290	4,268	4,282
<b>Total Uniform Strength</b>	<b>5,557</b>	<b>5,457</b>	<b>5,651</b>	<b>5,636</b>	<b>5,629</b>

<b>Civilian Staff</b>					
<b>Classification</b>	<b>2007</b>	<b>2008</b>	<b>2009</b>	<b>2010</b>	<b>2011</b>
Chief Administrative Officer- Policing	1	1	1	1	1
Director	6	6	5	5	5
Parking Enforcement Officer	401	402	407	409	394
Court Officer	457	458	452	459	463
Document Server	17	15	12	16	16
Communications Operator	231	237	228	220	231
Cadets-in-Training	124	276	196	202	1
Custodial Officer	5	5	5	5	4
Other Civilians	1,198	1,193	1,215	1,248	1,302
<b>Total Civilian Strength</b>	<b>2,440</b>	<b>2,593</b>	<b>2,521</b>	<b>2,565</b>	<b>2,417</b>
<b>Grand Total</b>	<b>7,997</b>	<b>8,050</b>	<b>8,172</b>	<b>8,201</b>	<b>8,046</b>

<b>Other Staff</b>					
<b>Classification</b>	<b>2007</b>	<b>2008</b>	<b>2009</b>	<b>2010</b>	<b>2011</b>
Auxiliary Personnel*	605	613	712	742	774
Temporary Employee**	66	73	90	78	54
School Crossing Guard***	730	734	738	739	769
Part-time Court Officer	147	138	183	176	153
Part-time Employee - other	78	85	78	81	67
<b>Total Other</b>	<b>1,626</b>	<b>1,643</b>	<b>1,801</b>	<b>1,816</b>	<b>1,817</b>

\*Includes other adult volunteers  
\*\*Includes spares

\*\*\* Includes other volunteers  
\*\*\*\*As of December 31, 2010, excludes those members in HRUGS/GA



\*Percentages reflect the new organizational structure approved on October 5, 2011, and exclude 59 temporarily and Long-term Suspended members Human Resource Management and Executive Command were combined to form the new Corporate Command. In 2010, Human Resource Command constituted 5.90% and Executive Command 4.99% of personnel.

**PERSONNEL AND BUDGET**

	<b>Superintendent and Above</b>	<b>Staff Inspector</b>	<b>Inspector</b>	<b>Staff/Det. Sergeant</b>	<b>Sergeant/ Detective</b>	<b>Constable</b>	<b>Uniform Strength</b>	<b>Civilian Strength*</b>	<b>Total Strength</b>	<b>School Crossing Guard</b>
<b>Central Field</b>										
CENTRAL FIELD COMMAND HQ	1	0	0	1	3	3	8	1	9	0
11 Division	1	0	1	7	36	177	222	10	232	50
12 Division	0	0	1	7	34	165	207	12	219	51
13 Division	0	1	1	7	34	140	183	10	193	57
14 Division	1	0	1	8	45	225	280	14	294	45
51 Division	1	0	1	8	42	221	273	13	286	31
52 Division	1	0	2	8	47	197	255	17	272	0
53 Division	0	1	1	7	32	144	185	10	195	67
54 Division	0	1	1	7	33	165	207	10	217	47
55 Division	1	0	1	8	36	176	222	13	235	66
<b>Central Field Total</b>	<b>6</b>	<b>3</b>	<b>10</b>	<b>68</b>	<b>342</b>	<b>1613</b>	<b>2042</b>	<b>110</b>	<b>2152</b>	<b>414</b>
<b>Area Field**</b>										
AREA FIELD COMMAND HQ**	1	1	0	4	7	17	30	5	35	0
22 Division	1	0	1	7	33	188	230	14	244	54
23 Division	1	0	1	8	33	182	225	10	235	51
31 Division	1	0	1	8	37	206	253	14	267	35
32 Division	1	0	1	7	33	188	230	11	241	54
33 Division	0	1	1	7	32	137	178	11	189	37
41 Division	1	0	1	7	41	203	253	11	264	42
42 Division	1	0	1	7	35	186	230	13	243	44
43 Division	1	0	1	7	38	213	260	14	274	38
<b>Area Field Total</b>	<b>8</b>	<b>2</b>	<b>8</b>	<b>62</b>	<b>289</b>	<b>1,520</b>	<b>1,889</b>	<b>103</b>	<b>1,992</b>	<b>355</b>
Policing Operations Command***	2	0	1	2	8	64	77	4	81	0
<b>Grand Total</b>	<b>16</b>	<b>5</b>	<b>19</b>	<b>132</b>	<b>639</b>	<b>3,197</b>	<b>4,008</b>	<b>217</b>	<b>4,225</b>	<b>769</b>

\* Does not include temporary and part-time civilian members.

\*\*AFC includes members assigned to IMPART

\*\*\*POC includes members assigned to TAVIS

\*\*\*\*As of December 31, 2011

## COMMUNICATIONS

Calls Received at Communications Centre				
Year	Emergency	Non-Emergency	Total	Dispatched Calls
2007	928,955	861,090	1,790,045	853,933
2008	945,559	868,960	1,814,519	876,669
2009	966,939	840,838	1,807,777	875,031
2010	1,089,570	837,007	1,926,577	902,355
<b>2011</b>	<b>1,227,791</b>	<b>840,147</b>	<b>2,067,938</b>	<b>921,722</b>

Alarm Calls					
Status	2007	2008	2009	2010	2011
Valid Alarms	667	571	474	394	<b>335</b>
False Alarms	25,475	24,509	22,244	21,408	<b>19,872</b>
<b>Total</b>	<b>26,142</b>	<b>25,080</b>	<b>22,718</b>	<b>21,802</b>	<b>20,207</b>

AT&T Language Line Service (other than English)**					
Language Line*	2007	2008	2009	2010	2011
Arabic	22	28	36	63	<b>57</b>
Chinese	1999 (1)	1996 (1)	1852 (1)	1878 (1)	<b>1853 (1)</b>
Croatian	3	1	5	7	<b>6</b>
Farsi	112 (10)	90 (10)	112 (10)	138 (8)	<b>153 (8)</b>
French	127 (8)	155 (8)	132 (8)	130 (9)	<b>138 (10)</b>
German	5	0	3	7	<b>6</b>
Greek	22	22	14	30	<b>26</b>
Hindi	29	30	33	27	<b>36</b>
Hungarian	14	9	39	118 (10)	<b>234 (3)</b>
Italian	227 (3)	142 (9)	115 (9)	109	<b>109</b>
Japanese	22	22	24	30	<b>34</b>
Korean	123 (9)	157 (7)	194 (4)	182 (5)	<b>208 (4)</b>
Polish	80	88	62	94	<b>84</b>
Portuguese	219 (4)	199 (4)	191 (5)	192 (4)	<b>163 (7)</b>
Punjabi	65	59	60	61	<b>82</b>
Russian	134 (7)	192 (5)	203 (3)	221 (3)	<b>201 (5)</b>
Somali	27	20	26	29	<b>25</b>
Spanish	576 (2)	786 (2)	767 (2)	697 (2)	<b>610 (2)</b>
Tamil	170 (5)	173 (6)	134 (7)	144 (7)	<b>196 (6)</b>
Turkish	26	32	22	13	<b>20</b>
Urdu	31	21	20	27	<b>22</b>
Vietnamese	162 (6)	214 (3)	151 (6)	161 (6)	<b>140 (9)</b>
<b>Total</b>	<b>4,195</b>	<b>4,436</b>	<b>4,195</b>	<b>4,358</b>	<b>4,403</b>

\*Numbers provided represent calls received at Communications via 9-1-1 or the non-emergency number that utilized Language Line

\*\*Top Ten ranking shown in bracket

## MISCELLANEOUS STATISTICS

<b>Community Mobilization</b>		<b>Events*</b>
<b>Lectures or Presentations</b>		
Presentations to community members, organizations, agencies or groups		920
Police Officer lectures/presentations (platoons, divisions or units)		679
School lectures / presentations^^		3307
Personal Safety Crime prevention lectures/presentations		797
Lectures/presentations given regarding family/relationship violence		146
Child abuse/child protection Lectures/presentations (includes internet safety)		242
Elder abuse and Senior safety Lectures/presentations		243
Total number of lectures/presentations given on crime prevention topics		2302
Crime Prevention Through Environmental Design (CPTED) and community safety audi		392
<b>Meetings</b>		
Divisional Police Liasion Committee Meetings		134
CMU Police Consultative Committee Meetings		68
Community meetings (excluding CPLC and CPCC)		1507
<b>Community Events^ **</b>		
Black History Month		21
U.N.Day for the Elimination of Racial Discrimination		1
Khalsa Day		3
National Aboriginal Day		4
Gay Pride		14
Caribana		21
Other cultural events		334

\* Events attended

^Events related to major cultural occasions planned, coordinated, assisted or attended

^^Excluding family/relationship violence

<b>Volunteer Resources</b>					
	<b>2007</b>	<b>2008</b>	<b>2009</b>	<b>2010</b>	<b>2011</b>
Hours Volunteered	73,386	51,200	88,152	69,141	78,820

<b>Victim Services</b>					
	<b>2007</b>	<b>2008</b>	<b>2009*</b>	<b>2010</b>	<b>2011</b>
Total Incidents	8,753	9,709	9,932	10,154	10,523
Telephone Assisted	14,644	14,397	15,261	15,038	15,752
On Scene	1,878	2,370	3,147	3,932	3,903
Domestic Related	4,160	5,224	6,568	5,992	6,419

<b>Industrial Liaison</b>					
	<b>2007</b>	<b>2008</b>	<b>2009</b>	<b>2010</b>	<b>2011</b>
Labour disputes attended	23	27	24	18	15
Potential dispute contacts	18	25	16	20	18

## MISCELLANEOUS STATISTICS

<b>Hate/Bias Crime</b>					
	<b>2007</b>	<b>2008</b>	<b>2009</b>	<b>2010</b>	<b>2011</b>
Occurrences*	130	153	174	132	123

[Detailed Information on TPS hate bias crime can be found at www.torontopolice.on.ca/publications](http://www.torontopolice.on.ca/publications)

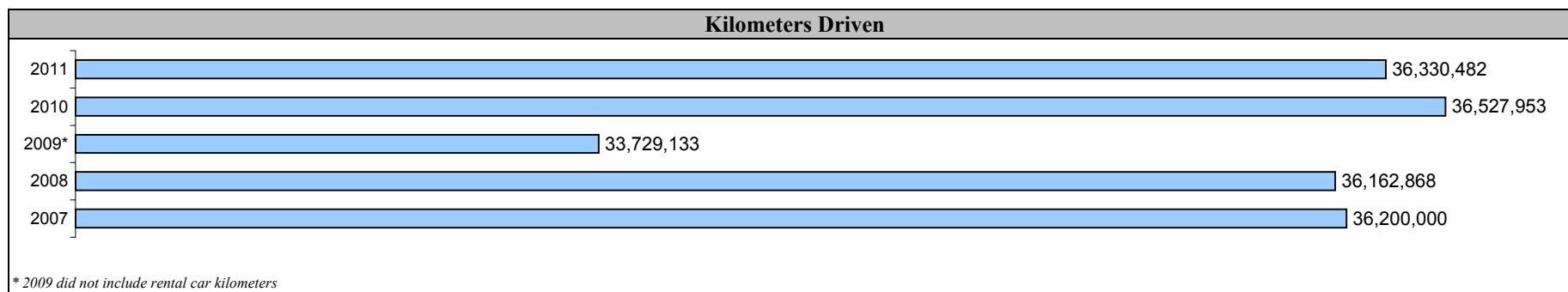
<b>Crime Stoppers</b>					
	<b>2007</b>	<b>2008</b>	<b>2009</b>	<b>2010</b>	<b>2011</b>
Arrests	518	649	401	374	<b>210</b>
Charges Laid	1,959	2,531	2,000	1,909	<b>703</b>

<b>Miscellaneous</b>					
	<b>2007</b>	<b>2008</b>	<b>2009</b>	<b>2010</b>	<b>2011</b>
Transgender Searches*	Not Available	Not Available	Not Available	186	244
Women Partially/Complete Undress**	Not Available	13	13	11	10

\*Search and Detention of Transgender People - Self Identified

\*\*Police Attendance at Locations Occupied Solely by Women in a State of Partial or Complete Undress

<b>Fleet</b>					
<b>Vehicles</b>	<b>2007</b>	<b>2008</b>	<b>2009</b>	<b>2010</b>	<b>2011</b>
Cars	1,349	1,385	1,421	1,470	<b>1,440</b>
Motorcycles	92	75	73	69	<b>69</b>
Other	120	127	123	125	<b>125</b>
<b>Total Vehicles</b>	<b>1,561</b>	<b>1,587</b>	<b>1,617</b>	<b>1,664</b>	<b>1,634</b>
Boats	23	21	22	22	<b>22</b>
Horses	28	27	27	28	<b>28</b>



\* 2009 did not include rental car kilometers

## COMPLAINTS AGAINST POLICE

<b>PUBLIC COMPLAINTS</b>	<b>2007</b>	<b>2008</b>	<b>2009</b>	<b>2010</b>	<b>2011</b>
<b>Total</b>	699	764	712	1147	847

<b>COMPLAINT CLASSIFICATIONS</b>	<b>2007</b>	<b>2008</b>	<b>2009</b>	<b>2010</b>	<b>2011</b>
<b>Investigated Complaints</b>					
Conduct - Less Serious	369	400	381	475	395
Conduct - Serious	25	50	33	245	89
Policy	4	8	3	3	6
Service	5	1	4	17	11
<b>Total Investigated</b>	<b>403</b>	<b>459</b>	<b>421</b>	<b>740</b>	<b>501</b>
<b>Not Investigated Complaints</b>					
Frivolous	209	213	200	248	130
Made In Bad Faith	7	10	11	0	0
No Jurisdiction	2	3	5	35	131
Not Directly Affected	39	23	32	44	9
Not in Public Interest	0	0	0	1	28
Not Signed	0	1	1	1	0
Over Six Months	38	47	40	67	40
Vexatious	1	8	2	7	5
Withdrawn	0	0	0	4	3
<b>Total Not Investigated</b>	<b>296</b>	<b>305</b>	<b>291</b>	<b>407</b>	<b>346</b>

<b>ALLEGED MISCONDUCT - Investigated Complaints</b>	<b>2007</b>	<b>2008</b>	<b>2009</b>	<b>2010</b>	<b>2011</b>
Breach of Confidence	0	5	1	0	1
Corrupt practice	1	1	0	1	1
Deceit	1	0	0	0	3
Discreditable Conduct	244	289	262	411	293
Insubordination	3	1	3	5	6
Neglect of Duty	50	47	23	21	44
Unlawful/Unnecessary Exercise of Authority	95	107	125	282	136
Policy	4	8	3	3	6
Service	5	1	4	17	11
<b>Total</b>	<b>403</b>	<b>459</b>	<b>421</b>	<b>740</b>	<b>501</b>

<b>DISPOSITION - Investigated Complaints</b>	<b>2007</b>	<b>2008</b>	<b>2009</b>	<b>2010</b>	<b>2011</b>
Informal Resolution	85	85	78	99	78
Misconduct Identified	14	23	9	30	9
Handled at Unit Level	9	16	7	24	7
Hearing Ordered	5	7	2	6	2
No Further Action Required	0	1	1	9	10
No Jurisdiction	1	3	0	5	6
Policy/Service - Action Taken	1	1	0	0	0
Policy/Service-No Action Taken	8	5	4	14	3
Unsubstantiated	206	235	236	367	253
Withdrawn	86	105	89	85	70
Not Concluded to-date	2	1	4	131	72
<b>Total</b>	<b>403</b>	<b>459</b>	<b>421</b>	<b>740</b>	<b>501</b>



**GENERAL DATA BY DIVISION AND COMMAND**

Units	Estimated Population**	Area (km2)	Estimated Gross Expenditures(\$)	Dispatched calls	Motor Vehicles*		Bicycles Stolen
					Stolen	Recovered	
<b>Central Field</b>							
11 Division	134,829	18.2	21,354,776	34,387	118	85	200
12 Division	137,340	24.7	22,813,706	37,123	188	114	48
13 Division	146,590	18.6	20,765,677	33,143	143	85	99
14 Division	137,835	13.6	33,531,266	62,784	178	113	412
51 Division	96,851	7.1	29,463,574	49,136	109	87	323
52 Division	43,373	8.2	29,553,089	40,231	61	43	593
53 Division	192,648	31.4	20,965,401	39,548	173	127	287
54 Division	143,322	20.0	22,521,293	41,726	105	81	131
55 Division	124,566	17.7	24,347,046	42,329	96	75	230
<b>Central Total</b>	<b>1,157,353</b>	<b>159.5</b>	<b>225,315,828</b>	<b>380,407</b>	<b>1,171</b>	<b>810</b>	<b>2,323</b>
<b>Area Field</b>							
22 Division	207,424	66.9	25,032,999	46,334	430	269	208
23 Division	171,516	57.1	24,702,245	38,438	517	260	82
31 Division	158,677	42.7	30,576,947	51,025	449	223	87
32 Division	255,533	60.7	25,740,983	43,356	504	270	114
33 Division	208,618	52.5	19,528,151	34,204	228	150	71
41 Division	183,564	43.9	27,884,132	47,292	265	161	81
42 Division	291,189	84.4	24,831,067	42,333	310	148	50
43 Division	221,211	59.0	28,998,168	47,440	268	145	123
<b>Area Total</b>	<b>1,697,732</b>	<b>467.2</b>	<b>207,294,692</b>	<b>350,422</b>	<b>2,971</b>	<b>1,626</b>	<b>816</b>
<b>Field Totals</b>	<b>2,855,085</b>	<b>626.7</b>	<b>432,610,520</b>	<b>730,829</b>	<b>4,142</b>	<b>2,436</b>	<b>3,139</b>

\*Does not include attempts

\*\*The total is slightly different from the sum of the rows due to the rounding of estimates

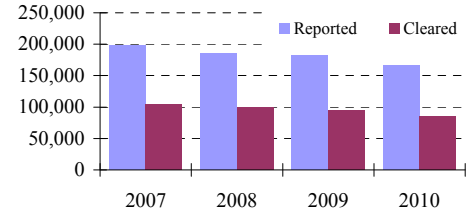
Recovered is the number of vehicles recovered which were stolen in 2011

<b>Other Dispatched Calls</b>	
Other Unit	3,105
CARU	68,175
TAG	119,613
<b>Other Calls Total</b>	<b>190,893</b>
<b>Grand Dispatched Calls Total**</b>	<b>921,722</b>

NOTE: The Decision continued to include MARINE Agency counts into TPS counts due to changes in operational dispatch practices. These changes were implemented in February 2006 and resulted in counts capturing predominantly by TPS Divisional references rather than by Marine Agency.

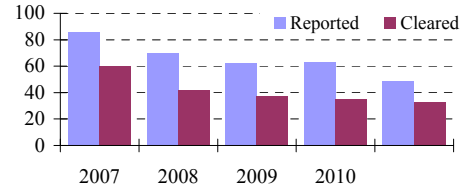
**GENERAL CRIME INFORMATION**  
**OFFENCE TOTALS**

<b>Total Criminal Code Offences*</b>					
Year	Reported	%Change	Rate	Cleared	%Clear
2007	198,219	-3.9	7,207.0	104,294	52.6
2008	186,572	-5.9	6,720.5	99,192	53.2
2009	182,407	-2.2	6,509.3	94,647	51.9
2010	166,954	-8.5	5,902.5	86,195	51.6
<b>2011</b>	<b>160,189</b>	<b>-4.0</b>	<b>5,610.7</b>	<b>77,417</b>	<b>48.3</b>



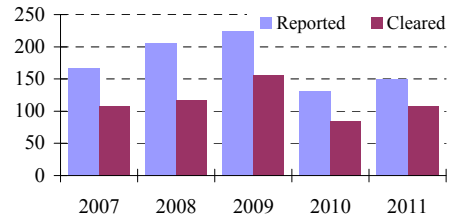
\*Excluding Criminal Code traffic offences.

<b>Homicides**</b>					
Year	Reported	%Change	Rate	Cleared	%Clear
2007	86	19.7	3.1	60	69.8
2008	70	-16.5	2.5	42	60.0
2009	62	-11.3	2.2	37	59.7
2010	63	-1.6	2.2	35	55.6
<b>2011</b>	<b>49</b>	<b>-22.6</b>	<b>1.7</b>	<b>33</b>	<b>67.3</b>



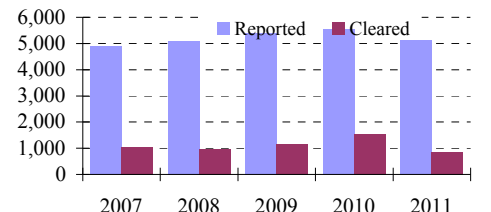
\*\* Homicide numbers as of the March 30, 2012 run date

<b>Robberies (Financial Institutions only)</b>					
Year	Reported	%Change	Rate	Cleared	%Clear
2007	167	-8.2	6.1	108	64.7
2008	205	22.8	7.4	117	57.1
2009	224	9.3	8.0	156	69.6
2010	130	-42.0	4.6	84	64.6
<b>2011</b>	<b>150</b>	<b>15.4</b>	<b>5.3</b>	<b>107</b>	<b>71.3</b>



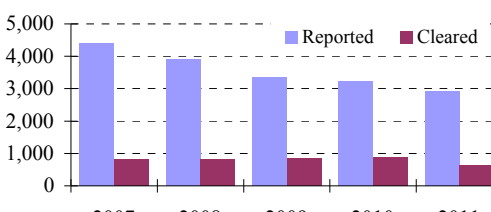
## GENERAL CRIME INFORMATION OFFENCE TOTALS

Break and Enter - Houses*					
Year	Reported	%Change	Rate	Cleared	%Clear
2007	4,892	5.2	177.9	1,044	21.3
2008	5,073	3.7	182.7	955	18.8
2009	5,387	6.2	192.2	1,150	21.3
2010	5,540	2.8	195.9	1,539	27.8
<b>2011</b>	<b>5,136</b>	<b>-7.3</b>	<b>179.9</b>	<b>855</b>	<b>16.6</b>



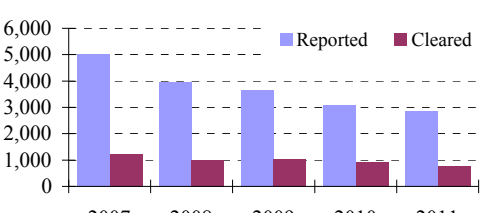
Year	Reported	Cleared
2007	4,892	1,044
2008	5,073	955
2009	5,387	1,150
2010	5,540	1,539
2011	5,136	855

Break and Enter - Apartments*					
Year	Reported	%Change	Rate	Cleared	%Clear
2007	4,405	-11.5	160.2	821	18.6
2008	3,889	-11.7	140.1	821	21.1
2009	3,355	-13.7	119.7	852	25.4
2010	3,240	-3.4	114.5	887	27.4
<b>2011</b>	<b>2,906</b>	<b>-10.3</b>	<b>101.8</b>	<b>618</b>	<b>21.3</b>



Year	Reported	Cleared
2007	4,405	821
2008	3,889	821
2009	3,355	852
2010	3,240	887
2011	2,906	618

Break and Enter - Business Premises*					
Year	Reported	%Change	Rate	Cleared	%Clear
2007	5,010	-16.0	182.2	1,211	24.2
2008	3,955	-21.1	142.5	1,009	25.5
2009	3,650	-7.7	130.3	1,024	28.1
2010	3,077	-15.7	108.8	918	29.8
<b>2011</b>	<b>2,854</b>	<b>-7.2</b>	<b>100.0</b>	<b>754</b>	<b>26.4</b>

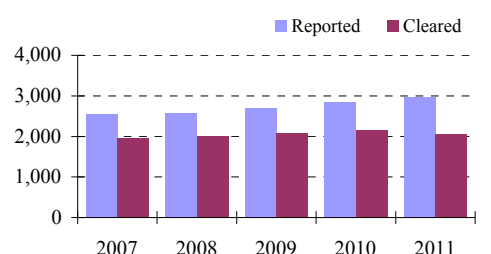


Year	Reported	Cleared
2007	5,010	1,211
2008	3,955	1,009
2009	3,650	1,024
2010	3,077	918
2011	2,854	754

\* 49 B&E's occurred at other premises in 2011

## GENERAL CRIME INFORMATION OFFENCE TOTALS

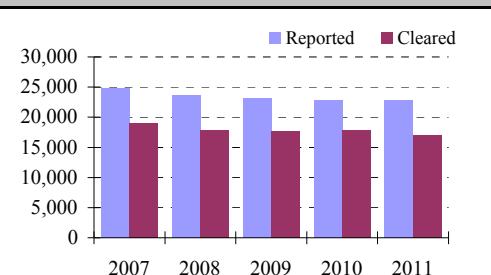
Sexual Assaults*					
Year	Reported	%Change	Rate	Cleared	%Clear
2007	2,537	-6.3	92.2	1,967	77.5
2008	2,566	1.1	92.4	2,010	78.3
2009	2,688	4.8	95.9	2,069	77.0
2010	2,849	6.0	100.7	2,149	75.4
<b>2011</b>	<b>2,961</b>	<b>3.9</b>	<b>103.7</b>	<b>2,057</b>	<b>69.5</b>



Year	Reported	Cleared
2007	2,537	1,967
2008	2,566	2,010
2009	2,688	2,069
2010	2,849	2,149
2011	2,961	2,057

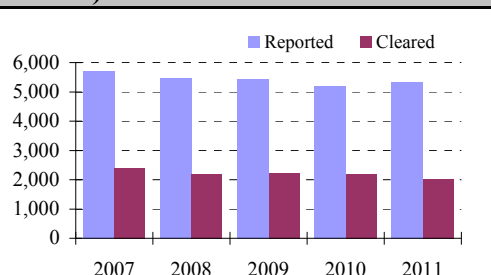
\* Includes "non-assaultive" sexual offences (e.g. Invitation to Sexual Touching; Sexual Exploitation etc.)

Non-Sexual Assaults					
Year	Reported	%Change	Rate	Cleared	%Clear
2007	24,743	-1.7	899.6	18,998	76.8
2008	23,677	-4.3	852.9	17,794	75.2
2009	23,040	-2.7	822.2	17,550	76.2
2010	22,840	-0.9	807.5	17,753	77.7
<b>2011</b>	<b>22,705</b>	<b>-0.6</b>	<b>795.2</b>	<b>17,052</b>	<b>75.1</b>



Year	Reported	Cleared
2007	24,743	18,998
2008	23,677	17,794
2009	23,040	17,550
2010	22,840	17,753
2011	22,705	17,052

Robberies (Including financial institution)					
Year	Reported	%Change	Rate	Cleared	%Clear
2007	5,710	-3.5	207.6	2,397	42.0
2008	5,478	-4.1	197.3	2,211	40.4
2009	5,448	-0.5	194.4	2,230	40.9
2010	5,209	-4.4	184.2	2,185	41.9
<b>2011</b>	<b>5,327</b>	<b>2.3</b>	<b>186.6</b>	<b>2,010</b>	<b>37.7</b>



Year	Reported	Cleared
2007	5,710	2,397
2008	5,478	2,211
2009	5,448	2,230
2010	5,209	2,185
2011	5,327	2,010

**GENERAL CRIME INFORMATION  
CRIMES REPORTED BY CATEGORY**

<b>VIOLENT CRIME, PROPERTY CRIME, OTHER CRIME AND CRIMINAL CODE TRAFFIC OFFENCES</b>															
	<b>VIOLENT CRIME*</b>			<b>PROPERTY CRIME**</b>			<b>OTHER CRIME***</b>			<b>CRIMINAL CODE TRAFFIC<sup>!</sup></b>			<b>TOTAL CRIMINAL CODE</b>		
	<b>TOTAL</b>	<b>%CHANGE</b>	<b>%CLEAR</b>	<b>TOTAL</b>	<b>%CHANGE</b>	<b>%CLEAR</b>	<b>TOTAL</b>	<b>%CHANGE</b>	<b>%CLEAR</b>	<b>TOTAL</b>	<b>%CHANGE</b>	<b>%CLEAR</b>	<b>TOTAL</b>	<b>%CHANGE</b>	<b>%CLEAR</b>
2007	33,816	-2.5	71.1	115,121	-3.0	33.1	49,282	-6.9	85.5	4,157	-4.1	98.0	202,376	-4.0	53.5
2008	32,520	-3.8	69.7	107,289	-6.8	34.2	46,763	-5.1	85.2	4,161	0.1	98.1	190,733	-5.8	54.1
2009	32,023	-1.5	70.4	105,792	-1.4	32.5	44,592	-4.6	84.5	3,931	-5.5	98.1	186,338	-2.3	52.9
2010	31,628	-1.2	71.7	94,819	-10.4	30.8	40,507	-9.2	84.8	4,020	2.3	97.7	170,974	-8.2	52.7
2011	31,332	-0.9	68.2	91,349	-3.7	28.0	37,508	-7.4	80.9	3,955	-1.6	97.2	164,144	-4.0	50.1

\*Violent Offences involve the use or threatened use of violence against a person, including homicide, attempted murder, assault, sexual assault and robbery. Robbery is considered a violent offence because, unlike other theft offences, it involves the use or threat of violence.

\*\*Property offences involve unlawful acts to gain property, but do not involve the use or threat of violence against the person. They include offences such as break and enter, theft, mischief, fraud etc.

\*\*\*Other Criminal Code offences include crimes such as disturbing the peace, arson, offensive weapon use, bail violations, prostitution, counterfeiting currency etc.

!Criminal Code traffic offences category includes, but is not limited to the following offences: impaired driving, failure or refusal to provide sample (breath or blood), failure to stop at the scene of an accident and dangerous operation of a motor vehicle.

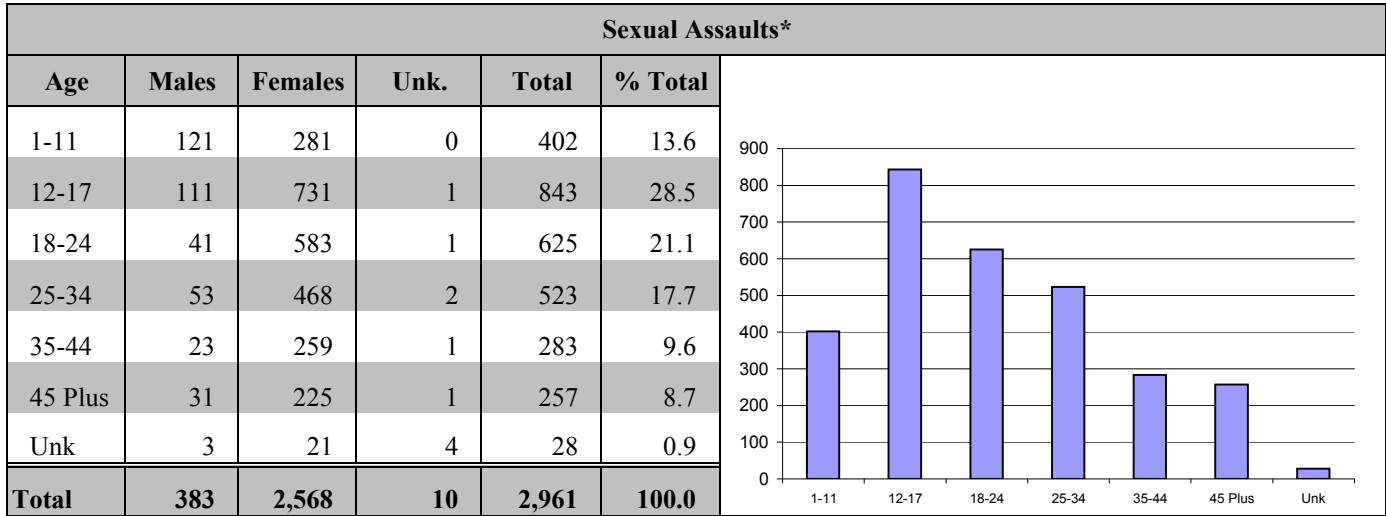
-3.994759437

**GENERAL CRIME INFORMATION  
CRIMES REPORTED BY CATEGORY BY UNIT**

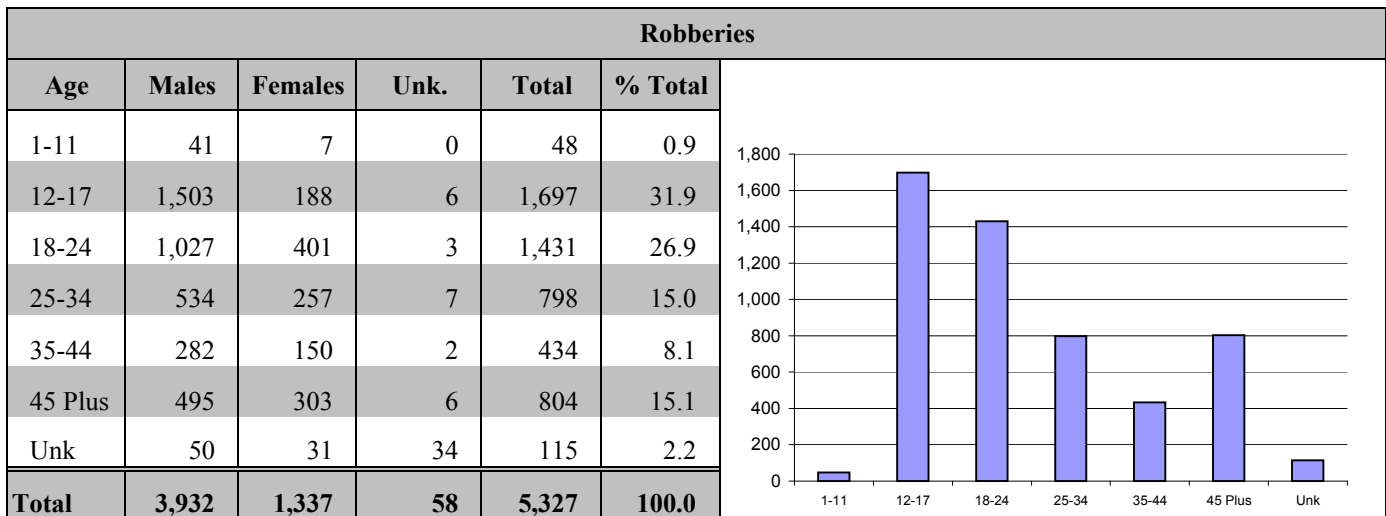
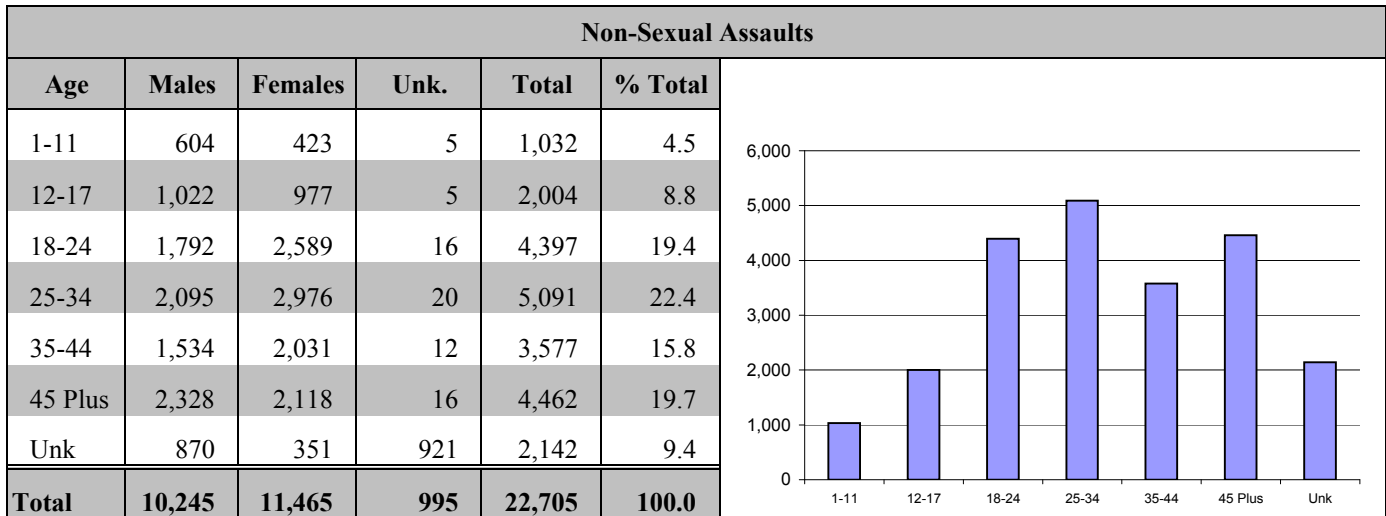
<b>VIOLENT CRIME, PROPERTY CRIME, OTHER CRIME AND CRIMINAL CODE TRAFFIC OFFENCES</b>															
<b>UNIT</b>	<b>VIOLENT CRIME*</b>			<b>PROPERTY CRIME**</b>			<b>OTHER CRIME***</b>			<b>CRIMINAL CODE TRAFFIC!</b>			<b>TOTAL CRIMINAL CODE</b>		
	<b>TOTAL</b>	<b>Rate</b>	<b>%CLEAR</b>	<b>TOTAL</b>	<b>Rate</b>	<b>%CLEAR</b>	<b>TOTAL</b>	<b>Rate</b>	<b>%CLEAR</b>	<b>TOTAL</b>	<b>Rate</b>	<b>%CLEAR</b>	<b>TOTAL</b>	<b>Rate</b>	<b>%CLEAR</b>
D11	1,076	798.0	71.7	3,555	2,636.7	27.7	1,283	951.6	83.2	244	181.0	99.2	6,158	4,567.3	49.8
D12	1,535	1,117.7	73.0	2,991	2,177.8	28.3	1,744	1,269.8	85.0	199	144.9	95.0	6,469	4,710.2	56.3
D13	1,169	797.5	71.3	3,034	2,069.7	25.6	1,278	871.8	80.5	111	75.7	96.4	5,592	3,814.7	49.1
D14	2,518	1,826.8	66.7	6,968	5,055.3	25.6	2,806	2,035.8	83.3	430	312.0	99.3	12,722	9,229.9	48.9
D51	1,929	1,991.7	63.3	6,274	6,478.0	27.2	1,997	2,061.9	81.0	153	158.0	96.7	10,353	10,689.6	45.4
D52	1,801	4,152.4	62.3	7,718	17,794.5	30.1	2,732	6,298.8	85.9	171	394.3	97.1	12,422	28,639.9	47.9
D53	1,262	655.1	64.3	6,179	3,207.4	24.5	1,276	662.3	67.9	115	59.7	93.9	8,832	4,584.5	37.3
D54	1,586	1,106.6	78.9	3,524	2,458.8	23.2	2,142	1,494.5	84.9	205	143.0	96.6	7,457	5,203.0	54.8
D55	1,676	1,345.5	71.4	4,731	3,798.0	30.6	1,957	1,571.1	85.9	173	138.9	97.1	8,537	6,853.4	52.6
<b>C. F. C.</b>	<b>14,552</b>	<b>1,257.4</b>	<b>68.8</b>	<b>44,974</b>	<b>3,885.9</b>	<b>27.1</b>	<b>17,215</b>	<b>1,487.4</b>	<b>82.8</b>	<b>1,801</b>	<b>155.6</b>	<b>68.8</b>	<b>78,542</b>	<b>6,786.3</b>	<b>48.0</b>
D22	1,727	832.6	64.4	6,368	3,070.0	24.4	2,328	1,122.3	75.6	324	156.2	98.1	10,747	5,181.2	44.2
D23	1,915	1,116.5	75.1	4,743	2,765.3	28.8	2,138	1,246.5	84.8	229	133.5	95.2	9,025	5,261.9	53.6
D31	2,610	1,644.8	69.8	4,973	3,134.0	28.9	2,796	1,762.1	81.7	216	136.1	92.6	10,595	6,677.1	54.2
D32	2,007	785.4	65.4	8,076	3,160.5	28.4	2,232	873.5	74.5	207	81.0	97.1	12,522	4,900.3	43.7
D33	1,175	563.2	77.2	5,115	2,451.8	32.1	1,618	775.6	84.9	190	91.1	99.5	8,098	3,881.7	50.8
D41	2,412	1,314.0	63.4	5,413	2,948.8	27.7	3,144	1,712.8	82.7	295	160.7	96.9	11,264	6,136.3	52.5
D42	1,751.0	601.3	58.8	4,633	1,591.1	21.3	1,696	582.4	73.6	341	117.1	98.5	8,421	2,891.9	42.8
D43	2,640	1,193.4	71.7	5,403	2,442.5	31.1	3,130	1,414.9	82.1	292	132.0	97.3	11,465	5,182.8	56.1
<b>A. F. C.</b>	<b>16,237</b>	<b>956.4</b>	<b>68.0</b>	<b>44,724</b>	<b>2,634.3</b>	<b>28.0</b>	<b>19,082</b>	<b>1,124.0</b>	<b>80.2</b>	<b>2,094</b>	<b>123.3</b>	<b>97.0</b>	<b>82,137</b>	<b>4,838.0</b>	<b>49.8</b>
<b>NSA</b>	<b>543</b>	<b>N/A</b>	<b>56.9</b>	<b>1,651</b>	<b>N/A</b>	<b>51.3</b>	<b>1,211</b>	<b>N/A</b>	<b>66.2</b>	<b>60</b>	<b>N/A</b>	<b>100.0</b>	<b>3,465</b>	<b>N/A</b>	<b>58.2</b>
<b>Toronto</b>	<b>31,332</b>	<b>1,097.4</b>	<b>68.2</b>	<b>91,349</b>	<b>3,199.5</b>	<b>27.7</b>	<b>37,508</b>	<b>1,313.7</b>	<b>80.9</b>	<b>3,955</b>	<b>138.5</b>	<b>97.2</b>	<b>164,144</b>	<b>5,749.2</b>	<b>49.3</b>

\* 'Mischief' offences are included under 'Property Crime'. For the purposes of other reports, 'mischief' offences may be included under 'Other Criminal Code'.

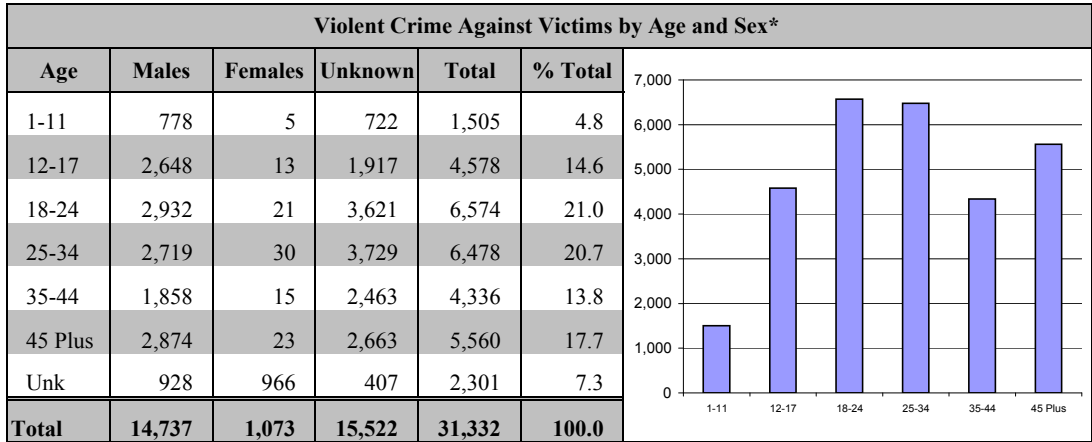
## OFFENCE TOTALS BY VICTIM AGE AND GENDER



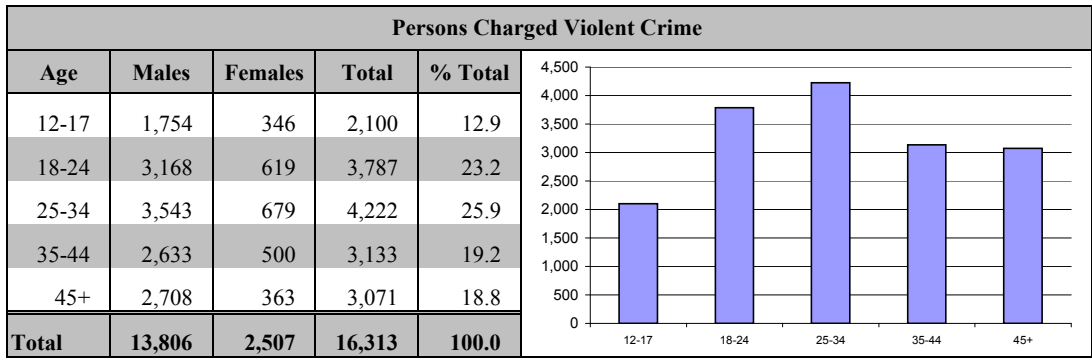
\* Includes "non-assaultive" sexual offences (e.g. Invitation to Sexual Touching; Sexual Exploitation etc.)



**OFFENCE TOTALS BY VICTIM AGE AND GENDER**

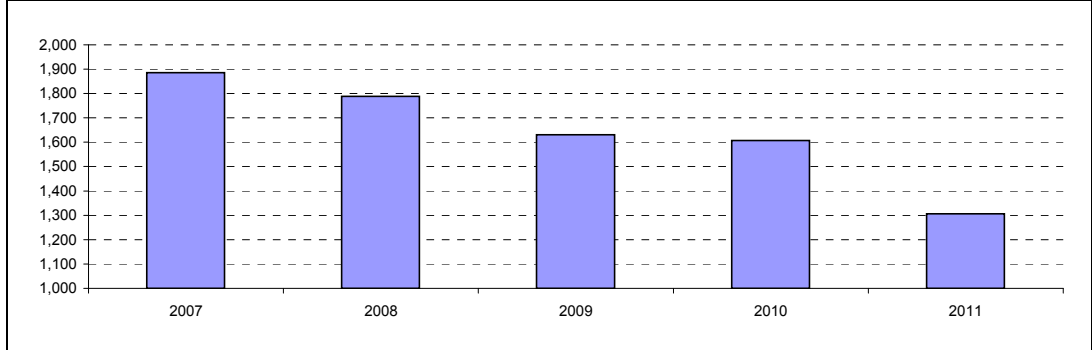


\* Violent crime includes homicide and homicide related offences, sexual assaults, sexual offences, non-sexual assaults, abduction, and robberies.



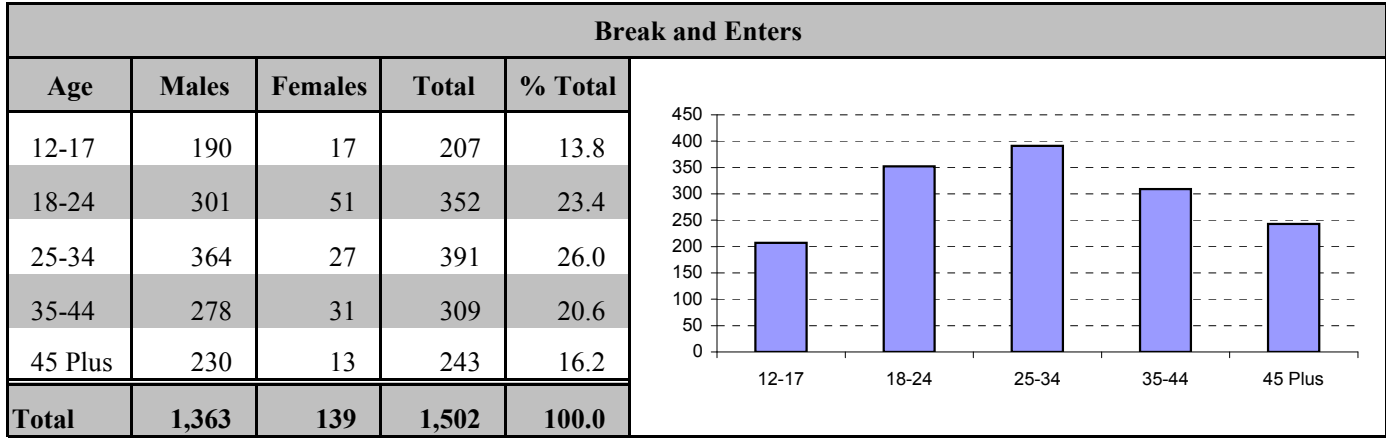
Note: A person can be charged with multiple offences and may be included in more than one category.

Selected Offences Against Police Officers					
OFFENCES	2007	2008	2009	2010	2011
First Degree Murder	0	0	0	0	1
Attempted Murder	11	5	9	5	3
Aggravated Assault	4	6	1	6	2
Assault With Weapon or Causing Bodily Harm	126	109	134	56	19
Assault	159	156	75	58	29
Assault Police Officer	884	883	889	949	825
Assault to Resist Arrest	695	629	522	532	426
Dangerous operation motor vehicle causing bodily harm	7	0	1	1	1
<b>Total Offences</b>	<b>1,886</b>	<b>1,788</b>	<b>1,631</b>	<b>1,607</b>	<b>1,306</b>

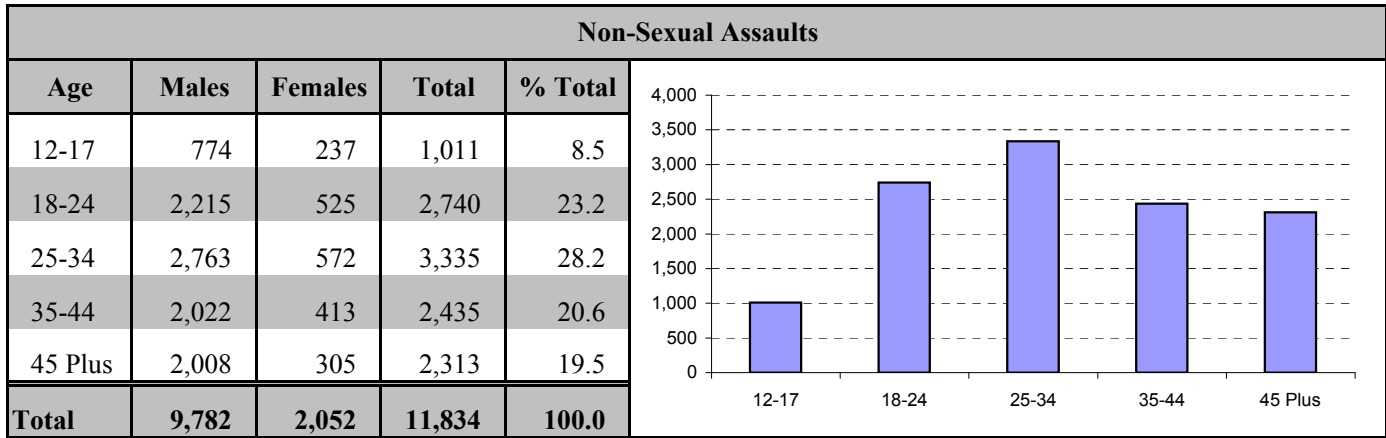




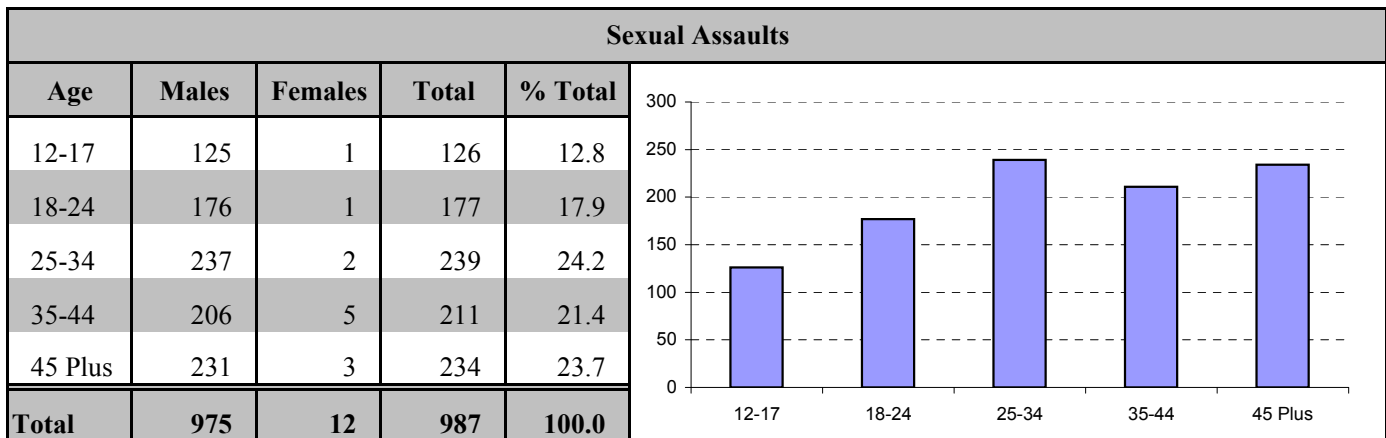
## PERSONS CHARGED BY ACCUSED AGE AND GENDER



*Note: A person can be charged with multiple offences and may be included in more than one category.*

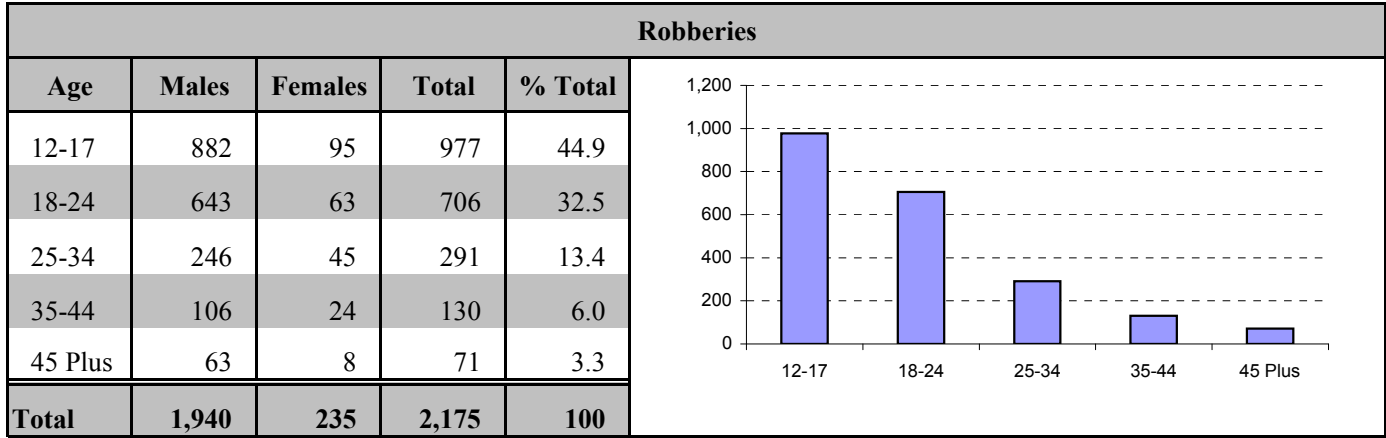


*Note: A person can be charged with multiple offences and may be included in more than one category.*

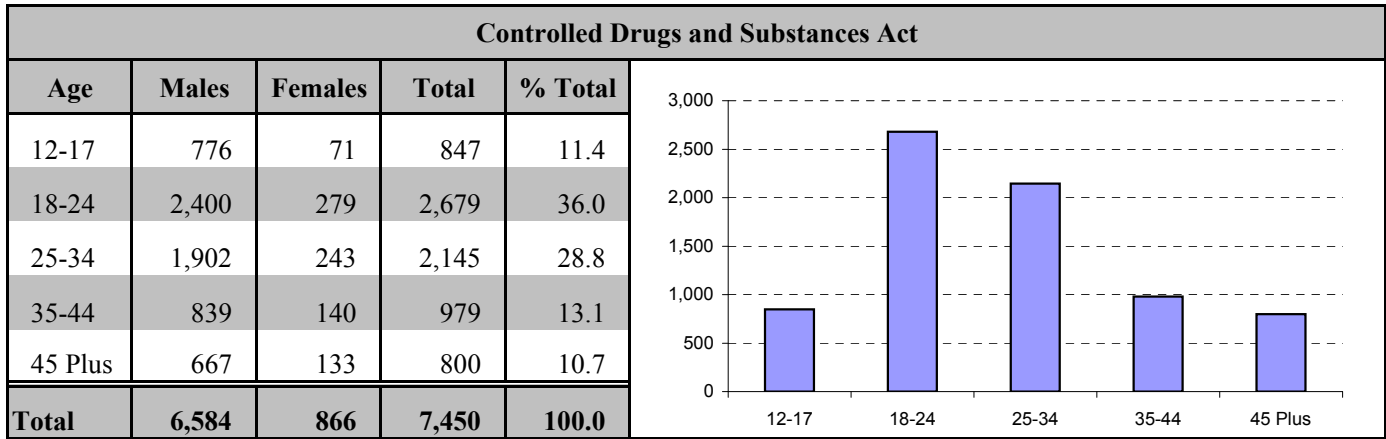


*Note: A person can be charged with multiple offences and may be included in more than one category.*

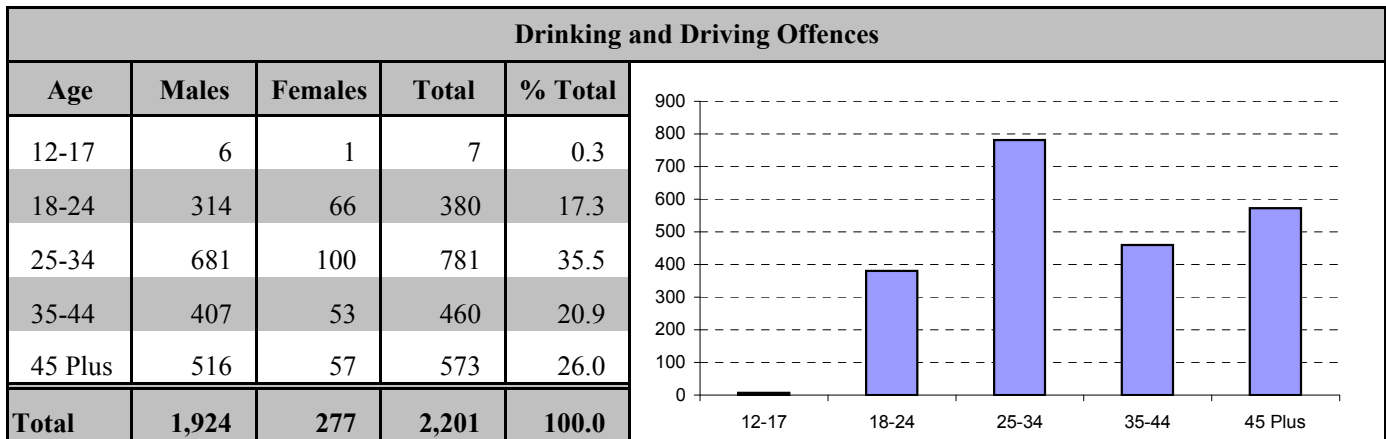
## PERSONS CHARGED BY ACCUSED AGE AND GENDER



*Note: A person can be charged with multiple offences and may be included in more than one category.*



*Note: A person can be charged with multiple offences and may be included in more than one category.*



*Note: A person can be charged with multiple offences and may be included in more than one category.*

**CRIMINAL CODE OFFENCES REPORTED AND CLEARED**

	<i>1st Degree Murder**</i>	<i>2nd Degree Murder</i>	<i>Manslaughter</i>	<i>Attempted Murder</i>	<i>Sexual Assault **</i>	<i>Other Assault</i>	<i>Robbery</i>	<i>Break &amp; Enter</i>	<i>Motor Vehicle Theft***</i>	<i>Theft Over</i>	<i>Theft Under</i>	<i>Fraud</i>	<i>Offensive Weapons</i>	<i>Other</i>	<i>Total Non-Traffic</i>	<i>Traffic</i>	<i>Total</i>
<b>CENTRAL FIELD</b>																	
Reported	11	8	2	50	1,021	11,177	2,024	4,686	1,305	530	25,583	4,576	1,804	23,964	<b>76,741</b>	1,801	<b>78,542</b>
Cleared	5	8	1	32	627	8,260	841	1,240	119	70	5,328	2,035	1,623	16,265	<b>36,454</b>	1,753	<b>38,207</b>
%Clear	45.5	100.0	50.0	64.0	61.4	73.9	41.6	26.5	9.1	13.2	20.8	44.5	90.0	67.9	<b>47.5</b>	97.3	<b>48.6</b>
<b>AREA FIELD</b>																	
Reported	19	7	2	70	1,202	11,263	3,265	6,252	3,010	694	21,372	6,188	2,472	24,227	<b>80,043</b>	2,094	<b>82,137</b>
Cleared	9	7	2	32	847	8,638	1,145	1,080	272	132	5,147	2,917	2,136	16,453	<b>38,817</b>	2,032	<b>40,849</b>
%Clear	47.4	100.0	100.0	45.7	70.5	76.7	35.1	17.3	9.0	19.0	24.1	47.1	86.4	67.9	<b>48.5</b>	97.0	<b>49.7</b>
<b>OUTSIDE TORONTO</b>																	
Reported	0	0	0	0	179	265	38	7	40	31	313	1,102	377	1,053	<b>3,405</b>	60	<b>3,465</b>
Cleared	0	0	0	0	76	154	24	6	12	19	41	627	110	889	<b>1,958</b>	60	<b>2,018</b>
%Clear	0.0	0.0	0.0	0.0	42.5	58.1	63.2	85.7	30.0	61.3	13.1	56.9	29.2	84.4	<b>57.5</b>	100.0	<b>58.2</b>
<b>TORONTO POLICE SERVICE</b>																	
Reported	30	15	4	120	2,402	22,705	5,327	10,945	4,355	1,255	47,268	11,866	4,653	49,244	<b>160,189</b>	3,955	<b>164,144</b>
Cleared	14	15	3	64	1,550	17,052	2,010	2,326	403	221	10,516	5,579	3,869	33,607	<b>77,229</b>	3,845	<b>81,074</b>
%Clear	46.7	100.0	75.0	53.3	64.5	75.1	37.7	21.3	9.3	17.6	22.2	47.0	83.2	68.2	<b>48.2</b>	97.2	<b>49.4</b>

\*Murder and Manslaughter relates to the number of and type of offences reported and do not necessarily indicate the number of persons murdered.

\*\*Sexual Assaults do not include non assaultive Sexual offences.

\*\*\*Includes motor cycles, snow vehicles and all attempts.

**CRIMINAL CODE OFFENCES REPORTED AND CLEARED**

	1st Degree Murder**	2nd Degree Murder	Manslaughter	Attempted Murder	Sexual Assault **	Other Assault	Robbery	Break & Enter	Motor Vehicle Theft***	Theft Over	Theft Under	Fraud	Offensive Weapons	Other	Total Non-Traffic	Traffic	Total
<b>11 DIVISION</b>																	
Reported	2	1	0	1	82	831	129	407	132	51	1,825	347	114	1,992	<b>5,914</b>	244	<b>6,158</b>
Cleared	0	1	0	0	56	635	52	97	9	9	358	187	105	1,314	<b>2,823</b>	242	<b>3,065</b>
%Clear	0.0	100.0	0	0.0	68.3	76.4	40.3	23.8	6.8	17.6	19.6	53.9	92.1	66.0	<b>47.7</b>	99.2	<b>49.8</b>
<b>12 DIVISION</b>																	
Reported	3	1	1	3	119	1,115	228	389	196	30	1,339	346	254	2,246	<b>6,270</b>	199	<b>6,469</b>
Cleared	1	1	1	1	93	865	99	77	13	6	328	167	235	1,564	<b>3,451</b>	189	<b>3,640</b>
%Clear	33.3	100.0	100.0	33.3	78.2	77.6	43.4	19.8	6.6	20.0	24.5	48.3	92.5	69.6	<b>55.0</b>	95.0	<b>56.3</b>
<b>13 DIVISION</b>																	
Reported	0	1	0	6	86	870	165	405	154	37	1,422	382	168	1,785	<b>5,481</b>	111	<b>5,592</b>
Cleared	0	1	0	3	54	659	80	130	10	3	253	176	150	1,121	<b>2,640</b>	107	<b>2,747</b>
%Clear	0	100.0	0	50.0	62.8	75.7	48.5	32.1	6.5	8.1	17.8	46.1	89.3	62.8	<b>48.2</b>	96.4	<b>49.1</b>
<b>14 DIVISION</b>																	
Reported	3	1	0	10	160	2,008	306	812	207	76	3,754	579	238	4,138	<b>12,292</b>	430	<b>12,722</b>
Cleared	2	1	0	4	96	1,433	115	252	18	10	605	224	216	2,824	<b>5,800</b>	427	<b>6,227</b>
%Clear	66.7	100.0	0	40.0	60.0	71.4	37.6	31.0	8.7	13.2	16.1	38.7	90.8	68.2	<b>47.2</b>	99.3	<b>48.9</b>

\*Murder and Manslaughter relates to the number of and type of offences reported and do not necessarily indicate the number of persons murdered.

\*\*Sexual Assaults do not include non assaultive Sexual offences.

\*\*\*Includes motor cycles, snow vehicles and all attempts.

**CRIMINAL CODE OFFENCES REPORTED AND CLEARED**

	1st Degree Murder**	2nd Degree Murder	Manslaughter	Attempted Murder	Sexual Assault **	Other Assault	Robbery	Break & Enter	Motor Vehicle Theft***	Theft Over	Theft Under	Fraud	Offensive Weapons	Other	Total Non-Traffic	Traffic	Total
<b>22 DIVISION</b>																	
Reported	1	1	0	6	108	1,233	343	926	463	83	3,166	716	190	3,187	<b>10,423</b>	324	<b>10,747</b>
Cleared	0	1	0	4	78	886	111	195	32	11	716	273	153	1,968	<b>4,428</b>	318	<b>4,746</b>
%Clear	0.0	100.0	0	66.7	72.2	71.9	32.4	21.1	6.9	13.3	22.6	38.1	80.5	61.8	<b>42.5</b>	98.1	<b>44.2</b>
<b>23 DIVISION</b>																	
Reported	3	0	0	2	203	1,285	354	510	529	139	2,255	638	360	2,518	<b>8,796</b>	229	<b>9,025</b>
Cleared	0	0	0	2	163	1,037	178	76	50	48	499	336	331	1,896	<b>4,616</b>	218	<b>4,834</b>
%Clear	0.0	0	0	100.0	80.3	80.7	50.3	14.9	9.5	34.5	22.1	52.7	91.9	75.3	<b>52.5</b>	95.2	<b>53.6</b>
<b>31 DIVISION</b>																	
Reported	6	2	0	14	223	1,716	556	690	446	60	2,223	665	426	3,352	<b>10,379</b>	216	<b>10,595</b>
Cleared	3	2	0	3	157	1,363	206	137	39	10	643	257	363	2,362	<b>5,545</b>	200	<b>5,745</b>
%Clear	50.0	100.0	0	21.4	70.4	79.4	37.1	19.9	8.7	16.7	28.9	38.6	85.2	70.5	<b>53.4</b>	92.6	<b>54.2</b>
<b>32 DIVISION</b>																	
Reported	1	2	0	9	146	1,418	400	1,192	485	147	3,833	1,477	225	2,980	<b>12,315</b>	207	<b>12,522</b>
Cleared	0	2	0	3	102	1,063	114	107	48	21	891	856	180	1,881	<b>5,268</b>	201	<b>5,469</b>
%Clear	0.0	100.0	0	33.3	69.9	75.0	28.5	9.0	9.9	14.3	23.2	58.0	80.0	63.1	<b>42.8</b>	97.1	<b>43.7</b>
<b>33 DIVISION</b>																	
Reported	0	1	0	5	97	840	211	642	237	69	2,657	821	186	2,142	<b>7,908</b>	190	<b>8,098</b>
Cleared	0	1	0	2	76	723	85	119	27	16	688	496	147	1,544	<b>3,924</b>	189	<b>4,113</b>
%Cleared	0	100.0	0	40.0	78.4	86.1	40.3	18.5	11.4	23.2	25.9	60.4	79.0	72.1	<b>49.6</b>	99.5	<b>50.8</b>

\*Murder and Manslaughter relates to the number of and type of offences reported and do not necessarily indicate the number of persons murdered.

\*\*Sexual Assaults do not include non assaultive Sexual offences.

\*\*\*Includes motor cycles, snow vehicles and all attempts.

**CRIMINAL CODE OFFENCES REPORTED AND CLEARED**

	<b>1st Degree Murder*</b>	<b>2nd Degree Murder</b>	<b>Manslaughter</b>	<b>Attempted Murder</b>	<b>Sexual Assault **</b>	<b>Other Assault</b>	<b>Robbery</b>	<b>Break &amp; Enter</b>	<b>Motor Vehicle Theft***</b>	<b>Theft Over</b>	<b>Theft Under</b>	<b>Fraud</b>	<b>Offensive Weapons</b>	<b>Other</b>	<b>Total Non-Traffic</b>	<b>Traffic</b>	<b>Total</b>
<b>41 DIVISION</b>																	
Reported	2	1	0	10	139	1,775	431	753	249	67	2,613	588	381	3,960	<b>10,969</b>	295	<b>11,264</b>
Cleared	1	1	0	6	87	1,247	145	154	26	3	589	219	326	2,823	<b>5,627</b>	286	<b>5,913</b>
%Clear	50.0	100.0	0	60.0	62.6	70.3	33.6	20.5	10.4	4.5	22.5	37.2	85.6	71.3	<b>51.3</b>	96.9	<b>52.5</b>
<b>42 DIVISION</b>																	
Reported	2	0	1	8	117	1,116	465	865	339	78	1,946	638	282	2,223	<b>8,080</b>	341	<b>8,421</b>
Cleared	2	0	1	4	71	793	117	138	12	9	342	219	252	1,304	<b>3,264</b>	336	<b>3,600</b>
%Clear	100.0	0	0	50.0	60.7	71.1	25.2	16.0	3.5	11.5	17.6	34.3	89.4	58.7	<b>40.4</b>	98.5	<b>42.8</b>
<b>43 DIVISION</b>																	
Reported	4	0	1	16	169	1,880	505	674	262	51	2,679	645	422	3,865	<b>11,173</b>	292	<b>11,465</b>
Cleared	3	0	1	8	113	1,526	189	154	38	14	779	261	384	2,675	<b>6,145</b>	284	<b>6,429</b>
%Cleared	75.0	0	100.0	50.0	66.9	81.2	37.4	22.8	14.5	27.5	29.1	40.5	91.0	69.2	<b>55.0</b>	97.3	<b>56.1</b>

\*Murder and Manslaughter relates to the number of and type of offences reported and do not necessarily indicate the number of persons murdered.

\*\*Sexual Assaults do not include non assaultive Sexual offences.

\*\*\*Includes motor cycles, snow vehicles and all attempts.

**CRIMINAL CODE OFFENCES REPORTED AND CLEARED**

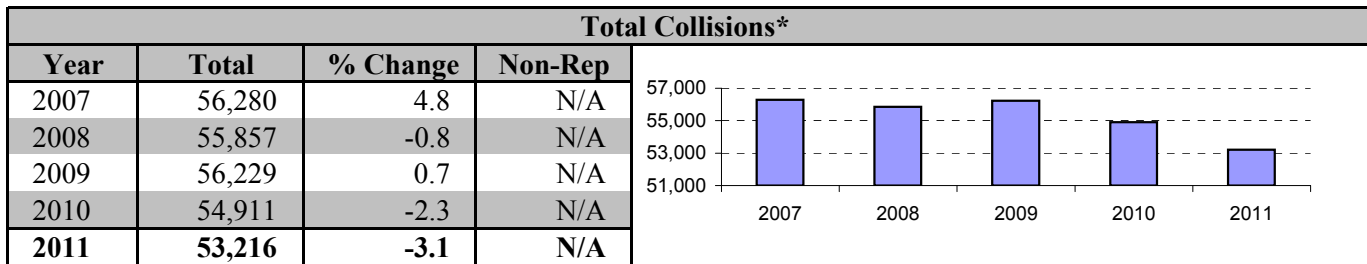
	1st Degree Murder*	2nd Degree Murder	Manslaughter	Attempted Murder	Sexual Assault **	Other Assault	Robbery	Break & Enter	Motor Vehicle Theft***	Theft Over	Theft Under	Fraud	Offensive Weapons	Other	Total Non-Traffic	Traffic	Total
<b>51 DIVISION</b>																	
Reported	0	1	1	6	143	1,440	321	522	137	56	3,850	617	259	2,847	<b>10,200</b>	153	<b>10,353</b>
Cleared	0	1	0	6	70	1,006	126	116	13	8	684	293	238	1,987	<b>4,548</b>	148	<b>4,696</b>
%Clear	0	100.0	0.0	100.0	49.0	69.9	39.3	22.2	9.5	14.3	17.8	47.5	91.9	69.8	<b>44.6</b>	96.7	<b>45.4</b>
<b>52 DIVISION</b>																	
Reported	0	0	0	4	118	1,444	225	297	67	88	5,635	714	123	3,536	<b>12,251</b>	171	<b>12,422</b>
Cleared	0	0	0	3	59	979	72	77	2	11	1,469	343	105	2,670	<b>5,790</b>	166	<b>5,956</b>
%Clear	0	0	0	75.0	50.0	67.8	32.0	25.9	3.0	12.5	26.1	48.0	85.4	75.5	<b>47.3</b>	97.1	<b>47.9</b>
<b>53 DIVISION</b>																	
Reported	1	0	0	7	99	925	213	813	197	90	3,415	733	122	2,102	<b>8,717</b>	115	<b>8,832</b>
Cleared	1	0	0	5	50	664	76	173	10	11	683	308	92	1,116	<b>3,189</b>	108	<b>3,297</b>
%Clear	100.0	0	0	71.4	50.5	71.8	35.7	21.3	5.1	12.2	20.0	42.0	75.4	53.1	<b>36.6</b>	93.9	<b>37.3</b>
<b>54 DIVISION</b>																	
Reported	1	2	0	6	105	1,243	203	378	117	73	1,769	390	355	2,610	<b>7,252</b>	205	<b>7,457</b>
Cleared	0	2	0	5	73	1,025	124	128	19	4	261	135	336	1,775	<b>3,887</b>	198	<b>4,085</b>
%Clear	0.0	100.0	0	83.3	69.5	82.5	61.1	33.9	16.2	5.5	14.8	34.6	94.6	68.0	<b>53.6</b>	96.6	<b>54.8</b>
<b>55 DIVISION</b>																	
Reported	1	1	0	7	109	1,301	234	663	98	29	2,574	468	171	2,708	<b>8,364</b>	173	<b>8,537</b>
Cleared	1	1	0	5	76	994	97	190	25	8	687	202	146	1,894	<b>4,326</b>	168	<b>4,494</b>
%Clear	100.0	100.0	0	71.4	69.7	76.4	41.5	28.7	25.5	27.6	26.7	43.2	85.4	69.9	<b>51.7</b>	97.1	<b>52.6</b>

\*Murder and Manslaughter relates to the number of and type of offences reported and do not necessarily indicate the number of persons murdered.

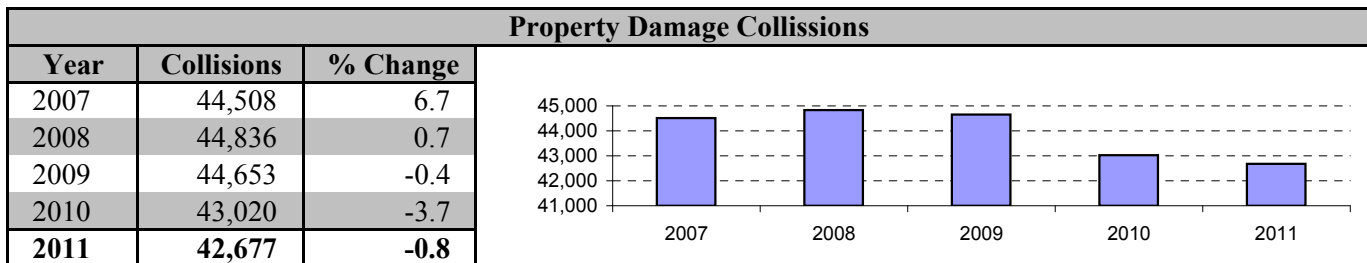
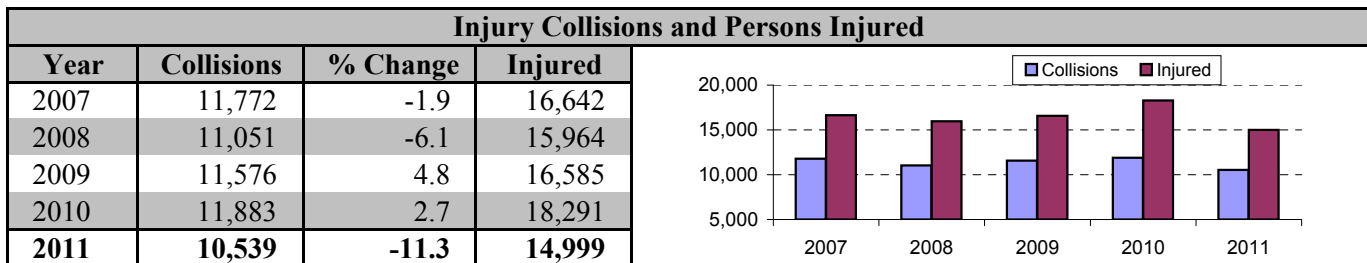
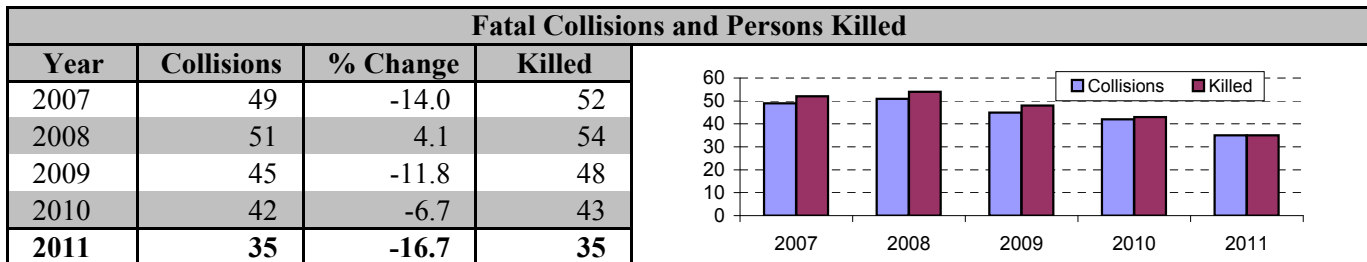
\*\*Sexual Assaults do not include non assaultive Sexual offences.

\*\*\*Includes motor cycles, snow vehicles and all attempts.

## TRAFFIC COLLISIONS AND OFFENCES



\*Total includes 10 collisions involving other types of vehicles ie. Trains not included in these charts.  
Includes Non-Reportable.



General Note: 2010 statistics are unofficial as Toronto Traffic Data Centre and Safety Bureau has not yet officially released them as of press time.  
However, any variances to these figures will be minimal. Detailed Toronto Traffic Collisions information can be found in the Transportation Services Traffic Management Centre section of the City of Toronto Website.



**TRAFFIC COLLISIONS AND OFFENCES  
PERSONS CHARGED AND R.I.D.E. DATA**

<b>Criminal Code Driving</b>							
Case Unit	Dangerous Driving	Drive While Disqualified	Drive While Impaired	Fail to Remain	Over 80	Refuse Sample	Total Charges
D11	12	8	84	16	108	17	245
D12	17	12	62	13	77	22	203
D13	9	6	38	5	62	10	130
D14	26	12	121	17	145	28	349
D51	13	9	44	8	56	16	146
D52	9	6	28	8	32	2	85
D53	8	4	33	6	41	17	109
D54	8	10	61	13	78	13	183
D55	8	17	61	2	68	6	162
<b>Total - Central Field</b>	<b>110</b>	<b>84</b>	<b>532</b>	<b>88</b>	<b>667</b>	<b>131</b>	<b>1,612</b>
D22	20	15	72	16	79	14	216
D23	17	16	68	14	77	21	213
D31	15	12	71	10	60	26	194
D32	19	7	63	8	76	13	186
D33	13	19	48	10	48	6	144
D41	30	12	98	20	117	20	297
D42	25	18	114	18	156	52	383
D43	32	22	91	21	118	25	309
<b>Total - Area Field</b>	<b>171</b>	<b>121</b>	<b>625</b>	<b>117</b>	<b>731</b>	<b>177</b>	<b>1,942</b>
Other Unit	14	2	6	12	5	3	42
TSV	40	18	190	34	337	74	693
<b>Total-Other</b>	<b>54</b>	<b>20</b>	<b>196</b>	<b>46</b>	<b>342</b>	<b>77</b>	<b>735</b>
<b>Grand Total</b>	<b>335</b>	<b>225</b>	<b>1,353</b>	<b>251</b>	<b>1,740</b>	<b>385</b>	<b>4,289</b>

<b>R.I.D.E. Information</b>					
	2007	2008	2009	2010	2011
Vehicles Stopped	426,485	409,429	409,274	398,526	430,520
Charges Laid**	344	380	490	406	427

*Charges Laid defined as all instances where a CIPS offence is linked to a specific person.*

**PERSONS CHARGED/CHARGES LAID  
CRIMINAL CODE AND FEDERAL**

	<b>Murder**</b>	<b>Murder Attempted</b>	<b>Assault Sexual</b>	<b>Assault Other</b>	<b>Robbery</b>	<b>Break &amp; Enter</b>	<b>Theft Over</b>	<b>Theft Under</b>	<b>Theft Other</b>	<b>Fraud</b>	<b>Weapons</b>	<b>Other CC</b>	<b>CC Traffic</b>	<b>Drug</b>	<b>Federal Other</b>
<b>Young Offender**</b>															
Male	5	11	124	777	882	190	18	1,219	424	43	468	1,863	17	776	322
Female	1	1	1	237	95	17	1	866	104	26	39	340	4	71	38
<b>Total</b>	<b>6</b>	<b>12</b>	<b>125</b>	<b>1,014</b>	<b>977</b>	<b>207</b>	<b>19</b>	<b>2,085</b>	<b>528</b>	<b>69</b>	<b>507</b>	<b>2,203</b>	<b>21</b>	<b>847</b>	<b>360</b>
<b>Adult**</b>															
Male	43	74	822	8,963	1,057	1,165	153	6,285	2,385	1,394	1,857	17,441	2,308	5,807	775
Female	4	3	10	1,814	140	122	33	3,696	646	582	230	2,891	361	794	124
<b>Total</b>	<b>47</b>	<b>77</b>	<b>832</b>	<b>10,777</b>	<b>1,197</b>	<b>1,287</b>	<b>186</b>	<b>9,981</b>	<b>3,031</b>	<b>1,976</b>	<b>2,087</b>	<b>20,332</b>	<b>2,669</b>	<b>6,601</b>	<b>899</b>
<b>Grand Total</b>	<b>53</b>	<b>89</b>	<b>957</b>	<b>11,791</b>	<b>2,174</b>	<b>1,494</b>	<b>205</b>	<b>12,066</b>	<b>3,559</b>	<b>2,045</b>	<b>2,594</b>	<b>22,535</b>	<b>2,690</b>	<b>7,448</b>	<b>1,259</b>

\*1st Degree, 2nd Degree and Manslaughter

\*\* Includes cases where gender is specified

Note: A person can be charged with multiple offences and may be included in more than one category. Therefore numbers on page 19 & 20 will not match with page 28 & 29.

	<b>Dangerous Driving</b>	<b>Drive Disqualified</b>	<b>Impaired Driving</b>	<b>Fail to Remain</b>	<b>Over 80</b>	<b>Refuse</b>
<b>Young Offender**</b>						
Male	7	1	5	5	6	0
Female	2	0	0	3	0	0
<b>Total</b>	<b>9</b>	<b>1</b>	<b>5</b>	<b>8</b>	<b>6</b>	<b>0</b>
<b>Adult**</b>						
Male	293	163	1,158	190	1,474	331
Female	24	10	185	21	256	55
<b>Total</b>	<b>317</b>	<b>173</b>	<b>1,343</b>	<b>211</b>	<b>1,730</b>	<b>386</b>
<b>Grand Total</b>	<b>326</b>	<b>174</b>	<b>1,348</b>	<b>219</b>	<b>1,736</b>	<b>386</b>

Note: A person can be charged with multiple offences and may be included in more than one category. Therefore numbers on page 19 & 20 will not match with page 28 & 29.

(3) Persons where gender not specified excluded.

Persons where age\_at\_offence less than 12 excluded.

Age Defined by CIPS : Age\_at\_offence field.

Young Offender define as Age between 12 -17.

Persons Charged defined as all instances where a CIPS offence is linked to a specific person.

\*\* Includes cases where gender is specified

**PERSONS CHARGED/CHARGES LAID  
CRIMINAL CODE AND FEDERAL**

	Murder*	Murder Attempted	Sexual Assault	Other Assault	Robbery	Break & Enter	Theft Over	Theft Under	Theft Other	Fraud	Offensive Weapons	Other Criminal Code	Criminal Code Traffic	Drug	Other Federal Statutes
<b>Central Field Command**</b>															
D11	0	0	27	388	55	71	13	364	136	55	71	829	143	207	97
D12	0	1	38	528	88	68	3	383	108	83	138	1,050	127	401	141
D13	0	4	26	449	58	69	3	240	102	73	74	791	86	229	47
D14	0	5	68	1,116	129	145	13	751	182	118	175	2,283	223	1,143	79
D51	1	7	43	786	116	117	10	697	213	124	174	1,708	92	597	55
D52	0	2	41	746	63	65	14	2,027	226	192	80	1,360	48	256	40
D53	0	6	33	449	56	65	11	660	118	111	51	664	72	166	19
D54	0	12	45	700	107	65	3	228	115	49	106	1,165	115	291	37
D55	0	7	46	601	95	119	4	778	145	86	98	1,154	97	250	46
<b>Area Field Command**</b>															
D22	0	5	64	680	89	95	14	687	195	124	79	1,414	118	258	62
D23	0	2	75	621	141	76	32	611	212	75	142	989	126	283	98
D31	0	3	80	865	223	83	9	643	147	88	243	1,327	115	502	118
D32	0	4	50	645	80	75	10	930	366	247	113	961	116	183	54
D33	0	4	54	486	77	64	16	717	252	105	93	851	80	181	40
D41	0	7	68	895	165	103	9	705	352	107	172	1,619	174	335	29
D42	0	4	52	627	134	57	12	460	150	92	136	981	268	264	58
D43	2	10	65	1,055	217	148	11	1,132	284	108	251	1,848	198	366	84
<b>Other Commands**</b>															
TSV	0	0	2	42	1	0	0	21	29	44	8	135	467	109	21
Other Unit	50	6	80	112	280	9	18	32	227	164	390	1,406	25	1,427	134
<b>Grand Total</b>	<b>53</b>	<b>89</b>	<b>957</b>	<b>11,791</b>	<b>2,174</b>	<b>1,494</b>	<b>205</b>	<b>12,066</b>	<b>3,559</b>	<b>2,045</b>	<b>2,594</b>	<b>22,535</b>	<b>2,690</b>	<b>7,448</b>	<b>1,259</b>

\*1st Degree, 2nd Degree and Manslaughter

\*\* Includes cases where gender is specified

Note: A person can be charged with multiple offences and may be included in more than one category. Therefore numbers on page 19 & 20 will not match with page 28 & 29.

Persons excluded where gender is not specified (3).

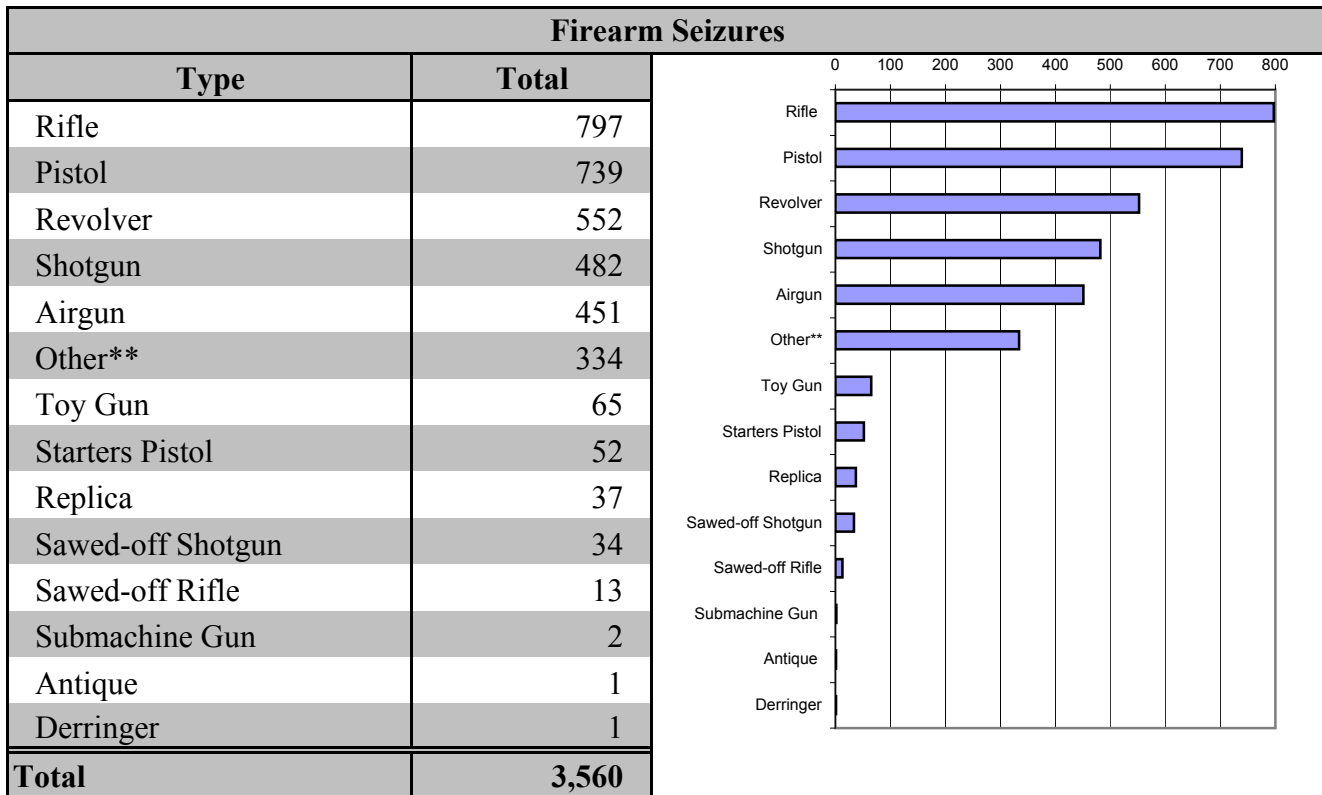
Persons age\_at offence less than 12 are excluded.

Persons Charged defined as all instances where a CIPS offence is linked to a specific person.

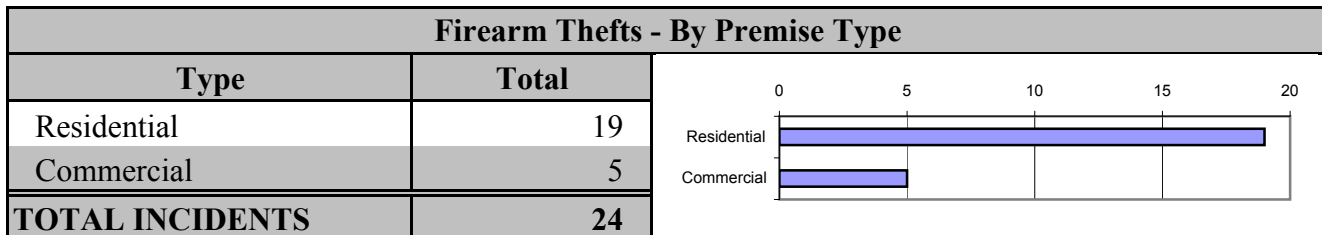
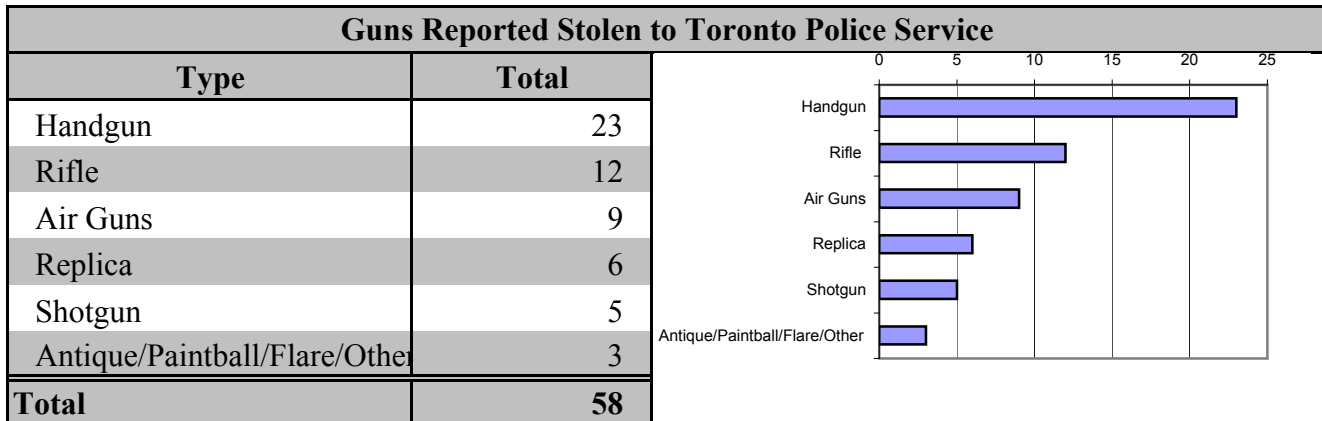
**PERSONS CHARGED/CHARGES LAID  
PROVINCAL/BY-LAW**

<b>Selected Provincial Offences (Charges Laid)</b>					
<b>Units</b>	<b>L.L.A. - Drunk</b>	<b>L.L.A. - Other</b>	<b>By-Laws</b>	<b>H.T.A.</b>	<b>Total</b>
11 Division	251	397	1,767	24,880	<b>27,295</b>
12 Division	177	583	2,840	17,444	<b>21,044</b>
13 Division	159	420	999	23,163	<b>24,741</b>
14 Division	600	2,003	3,498	26,298	<b>32,399</b>
51 Division	480	1,942	2,415	16,810	<b>21,647</b>
52 Division	762	2,695	5,917	15,231	<b>24,605</b>
53 Division	207	433	6,039	19,582	<b>26,261</b>
54 Division	140	349	1,423	25,841	<b>27,753</b>
55 Division	281	575	2,997	18,036	<b>21,889</b>
<b>Central Field Total</b>	<b>3,057</b>	<b>9,397</b>	<b>27,895</b>	<b>187,285</b>	<b>227,634</b>
22 Division	139	245	313	21,558	<b>22,255</b>
23 Division	194	755	395	27,048	<b>28,392</b>
31 Division	265	495	586	29,228	<b>30,574</b>
32 Division	151	251	1,264	23,958	<b>25,624</b>
33 Division	38	41	597	22,632	<b>23,308</b>
41 Division	122	427	1,301	21,174	<b>23,024</b>
42 Division	142	855	660	31,777	<b>33,434</b>
43 Division	240	569	1,115	27,364	<b>29,288</b>
<b>Area Field Total</b>	<b>1,291</b>	<b>3,638</b>	<b>6,231</b>	<b>204,739</b>	<b>215,899</b>
Traffic Services	148	559	911	7,405	<b>9,023</b>
All Other Units	99	397	4,135	91,284	<b>95,915</b>
<b>Other Unit Total</b>	<b>247</b>	<b>956</b>	<b>5,046</b>	<b>98,689</b>	<b>104,938</b>
<b>Service Total</b>	<b>4,595</b>	<b>13,991</b>	<b>39,172</b>	<b>490,713</b>	<b>548,471</b>

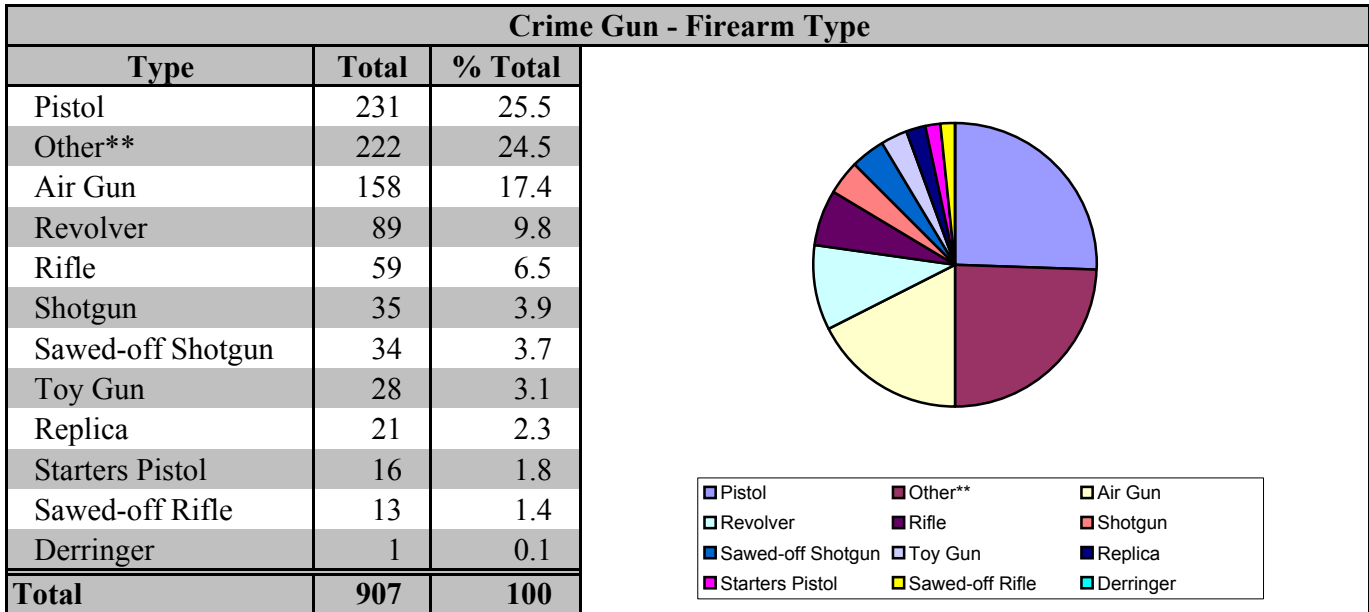
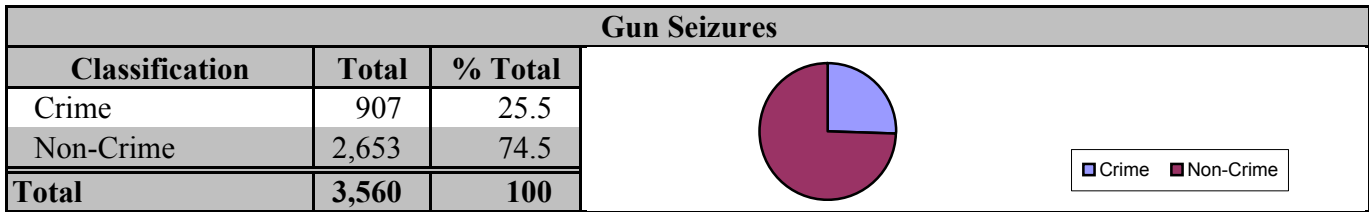
## FIREARMS SEIZURES AND THEFTS



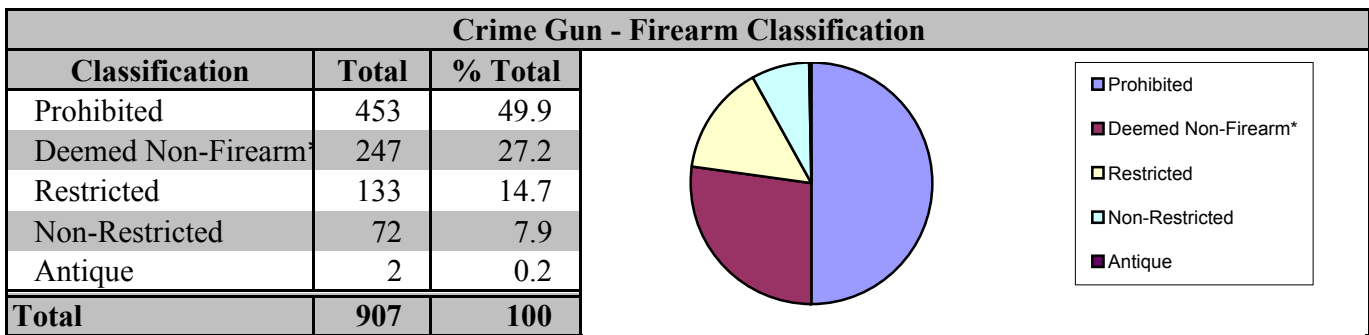
Other\*\*: This type of firearm includes zip guns, flare guns, stun guns, paintball guns and homemade firearms



## FIREARMS SEIZURES AND THEFTS



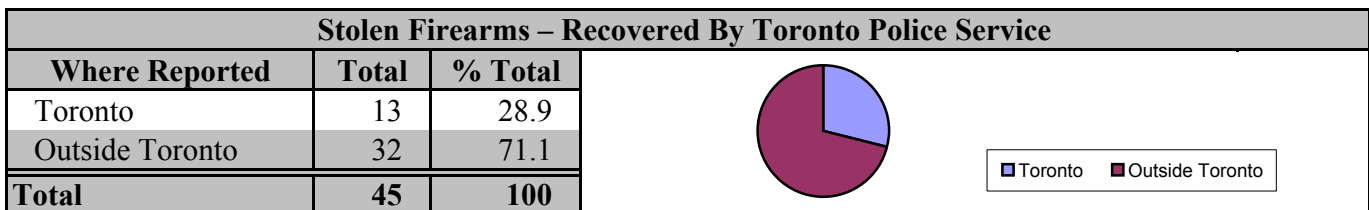
Other\*\*: This type of firearm includes zip guns, flare guns, stun guns, paintball guns and homemade firearms



\*Deemed Non-Firearm: These weapons are deemed not to be firearms as defined by section 84 (3) of the Criminal Code.

This classification can include any antique firearm, air guns, nail guns, flare guns and toy guns

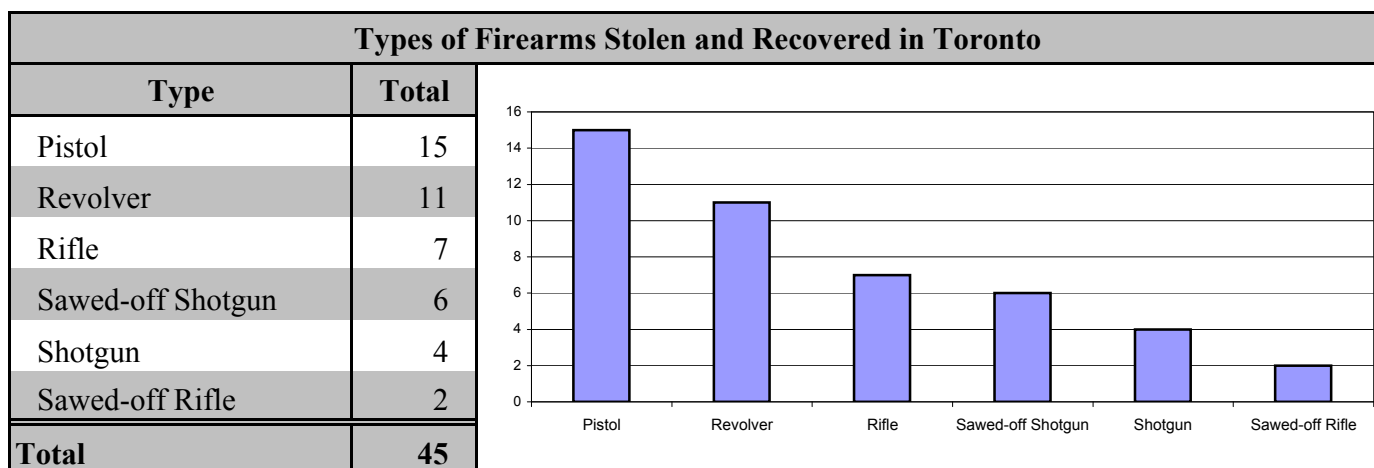
Crime Gun - Firearm Classification definitions appear in Appendix A at the end of this report



## FIREARMS SEIZURES AND THEFTS

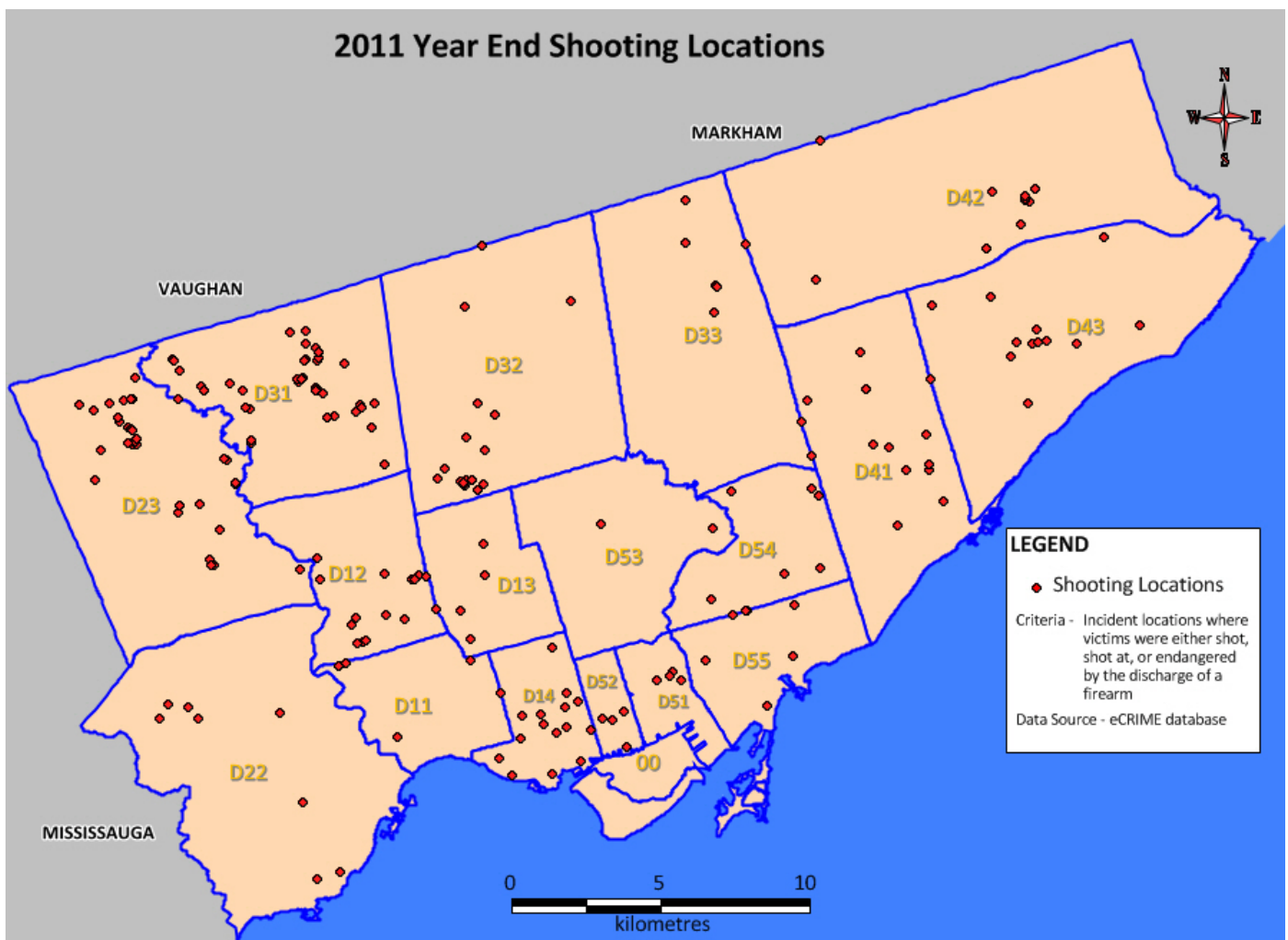
Top 10 Manufacturers by Firearm Type			
Shotgun	Rifle	Pistol	Revolver
Winchester	Winchester	Smith & Wesson	Smith & Wesson
Remington	Norinco	Glock	Ruger
Browning	Lee-Enfield	Ruger	Iver Johnson
Ithaca	Remington	Taurus	Colt
Mossberg	Ruger	Colt	Rossi
Baikal	Cooney	Hi-Point	Charter Arms
Beretta	Squires Bingham	Beretta	BBM
JC Higgins	Mossberg	Jennings	Herbert Schmidt
CIL	Browning	Walther	Hopkins & Allen
Harrington & Richardson	Eatonia	Davis Industries	Taurus

Top 5 Calibres by Firearm Type			
Shotgun	Rifle	Pistol	Revolver
12 GA	22 LR	9MM LUGER	38 SPECIAL
12 GA X 2 3/4"	7.62 X 39	45 AUTO	357 MAGNUM
12 GA X 3"	303 BRITISH	40 S&W	22 LR
20 GA	30-30 WIN	380 AUTO	38 S&W
16 GA	223 REM	22 LR	44 MAGNUM



## FIREARMS SEIZURES AND THEFTS

Top 20 Offences related to Firearms Seized
Unauthorized Possession Of A Firearm (1999) C.C. 91 (1)
Possession Of A Firearm Knowing Its Possession Is Unauthorized C.C. 92
Careless Storage Of A Firearm (1999) C.C. 86
Possession Of Firearm Obtained By The Commission Of An Offence C.C. 96 (1)
Possession For The Purpose Cocaine C.D.S.A. 5 (3) (A)
Possession Of A Prohibited Firearm With Ammunition (1999) C.C. 95 (1)
Possession Of Proceeds Of Crime C.C. 354 (1) (A)
Possession Of Firearm Contrary To Prohibition Order C.C. 117
Fail To Comply Recognizance C.C. 145
Careless Storage Ammunition C.C. 86
Possession Of A Restricted Firearm With Ammunition (1999) C.C. 95 (1)
Possession Of Cocaine C.D.S.A. 4 (3)
Unauthorized Possession Of A Prohibited Device (1999) C.C. 91 (2)
Weapons Dangerous C.C. 88 (1)
Possession Of Marihuana (Under) C.D.S.A. 4 (5)
Unauthorized Presence Of A Firearm In A Motor Vehicle (1999) C.C. 94 (1)
Traffic In Cocaine C.D.S.A. 5 (3) (A)
Unauthorized Possession Of A Prohibited Weapon (1999) C.C. 91 (2)
Possession Property Obtained By Crime (Under) C.C. 354
Possession For The Purpose Marihuana (Under) C.D.S.A. 5 (4)





## APPENDIX A: FIREARMS CLASSIFICATION DEFINITIONS

**Ammunition** means a cartridge containing a projectile designed to be discharged from a firearm and, without restricting the generality of the foregoing, includes a caseless cartridge and a

**Antique Firearm** – means

(a) any firearm manufactured before 1898 that was not designed to discharge rim-fire or centre-fire ammunition

(b) any firearm that is prescribed to be an antique firearm.

(Source: Criminal Code of Canada S.84).

**Automatic Firearm** means a firearm that is capable of, or assembled or designed and manufactured with the capability of, discharging projectiles in rapid succession during one pressure of the trigger.

**Deemed Non-Firearm** -These items are firearms that do not fall within any of these other classes. They are pellet guns, BB guns, toy guns, replica firearms (Source: Criminal Code of Canada S.84).

**Handgun** means a firearm that is designed, altered or intended to be aimed and fired by the action of one hand, whether or not it has been redesigned or subsequently altered to be aimed and fired by the

**Imitation Firearm** means any thing that imitates a firearm, and includes a replica firearm;

**Non-Restricted**-This is not a defined term in the Criminal Code. It covers all the guns not otherwise prohibited or restricted. These are mainly hunting and sporting guns (rifles and shotguns).

**Prescribed** means prescribed by regulations (Source: Criminal Code of Canada S.84).

**Prohibited Ammunition** means ammunition, or a projectile of any kind, that is prescribed to be prohibited ammunition

**Prohibited Firearm**

(a) a handgun that,

(i) has a barrel equal to or less than 105 mm (approx. 5 7/8") in length, or

(ii) is designed or adapted to discharge a 25 or 32 calibre cartridge, but does not include any such handgun that is prescribed,

## APPENDIX A: FIREARMS CLASSIFICATION DEFINITIONS

- (b) a firearm that is adapted from a rifle or shotgun, whether by sawing, cutting or any other
  - (i) is less than 660 mm in length (26 inches), or
  - (ii) is 660 mm (26 inches) or greater in length and has a barrel less than 457 mm (18 inches) in
- (c) an automatic firearm, whether or not it has been altered to discharge only one projectile with
- (d) any firearm that is prescribed to be a prohibited firearm by Parliament.

(Source: Criminal Code of Canada S.84).

This classification would include but not limited to sawed-off shotguns and fully automatic

### Prohibited Weapon

- (a) a knife that has a blade that opens automatically by gravity or centrifugal force or by hand pressure applied to a button,
- (b) any weapon, other than a firearm, that is prescribed to be a prohibited weapon by (Parliament

### The key prohibited weapons (this list is not exhaustive) are:

- (1) Tear gas, mace, or other gas designed to injure, immobilize, or otherwise incapacitate a person;
- (2) Liquid, spray or powder or other substance capable of injuring, immobilizing, or otherwise incapacitating a person;
- (3) Nunchaku, Shuriken, Manrikigusari (these items are described in the regulations);
- (4) Finger ring (which is capable of projecting a blade);
- (5) Cattle-prod or hand-held Taser;
- (6) One-handed or short (under 500 mm) cross-bow (whether designed or modified);
- (7) Constant companion – blade concealed in belt-buckle;
- (8) Push dagger – blade is perpendicular to the handle [looks like an old fashioned
- (9) “Knife comb” or similar device (under 30 cm) .

## APPENDIX A: FIREARMS CLASSIFICATION DEFINITIONS

- (10) Spiked wristband;
- (11) Blowgun;
- (12) Spring loaded Asp (telescoping baton);
- (13) Morning Star: A spiked metal ball at the end of a stick;
- (14) Brass knuckles; (Source: Criminal Code of Canada S.84)

**Replica Firearm**" means any device that is designed or intended to exactly resemble, or to resemble with near precision, a firearm, and that itself is not a firearm, but does not include any such device that is designed or intended to exactly resemble, or to resemble with near precision, an antique firearm;

**Restricted Firearm** – means,

- (a) Any handgun that is not a prohibited firearm,
- (b) a firearm that
  - (i) is not a prohibited firearm,
  - (ii) has a barrel less than 470 mm (approx 18 1/2"), and
  - (iii) is capable of discharging centre-fire ammunition in a semi-automatic manner,
- (c) a firearm that is designed or adapted to be fired when reduced to a length of less than 660 mm by folding, telescoping or otherwise, or
- (d) a firearm of any other kind that is prescribed to be a restricted weapon. (Source: Criminal Code)

This classification would include, but not limited to, a Glock 22 pistol, Smith and Wesson 44 Magnum

**Unknown** -Through an exhaustive investigation and research the firearm cannot be identified. (Source: Toronto Police Service Gun and Gang Unit).

**For the purposes of sections 91 to 95, 99 to 101, 103 to 107 and 117.03 of this Criminal Code of Canada and the provisions of the Firearms Act, the following weapons are deemed not to be**

## APPENDIX A: FIREARMS CLASSIFICATION DEFINITIONS

**(a)** any antique firearm;

(i) designed exclusively for signalling, for notifying of distress, for firing blank cartridges or for firing stud cartridges,

(ii) intended by the person in possession of it to be used exclusively for the purpose for which

**(c)** any shooting device that is

(i) designed exclusively for the slaughtering of domestic animals, the tranquillizing of animals or the discharging of projectiles with lines

(ii) intended by the person in possession of it to be used exclusively for the purpose for which it is designed; and

**(d)** any other barrelled weapon, where it is proved that the weapon is not designed or adapted to discharge

(i) a shot, bullet or other projectile at a muzzle velocity exceeding 152.4 m per second or at a muzzle energy exceeding 5.7 Joules, or

(ii) a shot, bullet or other projectile that is designed or adapted to attain a velocity exceeding 152.4 m per second or an energy

Notwithstanding subsection (3), an antique firearm is a firearm for the purposes of regulations made under paragraph 117(h) of the Firearms Act and subsection 86(2) of this Act (Source: Criminal Code of Canada S.84