



ARCHIVED - Archiving Content

Archived Content

Information identified as archived is provided for reference, research or recordkeeping purposes. It is not subject to the Government of Canada Web Standards and has not been altered or updated since it was archived. Please contact us to request a format other than those available.

ARCHIVÉE - Contenu archivé

Contenu archivé

L'information dont il est indiqué qu'elle est archivée est fournie à des fins de référence, de recherche ou de tenue de documents. Elle n'est pas assujettie aux normes Web du gouvernement du Canada et elle n'a pas été modifiée ou mise à jour depuis son archivage. Pour obtenir cette information dans un autre format, veuillez communiquer avec nous.

This document is archival in nature and is intended for those who wish to consult archival documents made available from the collection of Public Safety Canada.

Some of these documents are available in only one official language. Translation, to be provided by Public Safety Canada, is available upon request.

Le présent document a une valeur archivistique et fait partie des documents d'archives rendus disponibles par Sécurité publique Canada à ceux qui souhaitent consulter ces documents issus de sa collection.

Certains de ces documents ne sont disponibles que dans une langue officielle. Sécurité publique Canada fournira une traduction sur demande.

2005

ANNUAL STATISTICAL REPORT



TORONTO POLICE SERVICE

Published June 2006

Preamble

The statistical data used for the production of the Toronto Police Service's Annual Statistical Report is derived from a number of data sources. These systems include, but are not limited to:

- eCOPS - Enterprise Case Occurrence Processing System,
- COPS - Computerized Occurrence Processing System,
- CIPS - Criminal Information Processing System.

The crime information contained in this report provides offence based statistics. In offence based statistics, all offences involved in an incident are counted. This differs from incident based statistics where more than one offence may have occurred in the incident but only the most serious offence is counted in the crime statistics.

This report contains a summary of crime statistics for the Toronto Police Service pertaining to offences reported between January 1st and December 31st, 2005.

Comparing Crime Statistics

The Toronto Police Service reports its crime statistics using the Offence based method (counting all offences). Other Canadian Police Services and organizations such as Statistics Canada use the Uniform Crime Report (UCR) for their crime statistics using incident based statistics (the most serious offence per incident is counted). UCR classifies incidents according to the four most serious violations in the incident (generally the violations which carry the longest maximum sentences under the Criminal Code). For example, a suspect unlawfully enters into a dwelling unit and takes several items and upon leaving the house, the suspect encounters the homeowner. An altercation occurs and the suspect assaults the homeowner. In the offence based method this occurrence would be counted as a break and enter and an assault. This occurrence would only be counted as one offence of assault under the incident based counting method.

Incident based statistics cannot be directly compared or evaluated against offence based statistics. Furthermore, statistical crime data may be categorized using predetermined definitions in response to specific questions or criteria. Prior to comparing statistics from various other sources, the method used to categorize the data must be identified in order to ensure that the same type of information is being analyzed.

Care must always be taken when comparing statistics published in this report to reports published by other agencies such as Statistics Canada.

Detailed information pertaining to Statistics Canada crime reporting method can be found in the Uniform Crime Reporting Survey documents posted on the Statistics Canada website, <http://www.statcan.ca>.

Acknowledgement

Managing Editor

Corporate Planning

Editor

Corporate Planning

Crime Statistics

Analysis Support - Corporate Planning

Statistical Report Layout/Design

Karottu George, Analysis Support - Corporate Planning

Peter Koutsovasilis, Analysis Support - Corporate Planning

A special thanks to all contributors, especially Det. Dave Angus, Det. Constable Wayne Johnson, and Maureen Connolly of the Analysis Support Section of Corporate Planning for their unfailing support.

Printing and Production

Reproduction in whole or in part is permitted subject to the requirement that it is not for monetary gain; reproduced material remains in context; and the source is acknowledged on all copies as follows: Toronto Police Service 2005 Annual Statistical Report, along with date and page references.

Visit our Website at: ***www.TorontoPolice.on.ca***

You may reach us by E-mail at:

Corporateplanning@TorontoPolice.on.ca

<i>Table Of Contents</i>

Introduction	i
2005 Statistics at a Glance	ii
Glossary of Terms	iii
Uniform Strength, Expenditures & Distribution	1
Gross Operating Budget	1
Police Personnel by Rank and Classification	2
Police Personnel by Division and Field Command	3
Fleet Information	4
Classification of Incoming Calls (Calls for Service), AT&T Language Line Service	5
Public Complaints	6
Community Based & Miscellaneous Policing Statistics	7-8
General Data by Division and Field Command	9
City of Toronto Highlights - Traffic Collisions	10-11
<u>General Crime Information</u>	
City of Toronto Highlights - Criminal Code Offences	12-14
Criminal Code Offences by Category	15-16
Selected Offences Against Victims by Age and Sex	17
Persons Charged by Age and Sex	18-19
Violent Crime Statistics	20
Selected Offences Against Police Officers	21
Total Incidents Reported to Statistics Canada	21
<u>Criminal Code Offences Reported and Cleared</u>	
Field Command and Toronto Totals	22
By Division and Field Command	23-26
<u>Traffic and Other Offences</u>	
Criminal Code Traffic Charges Laid by Division	27
Charges Laid For Other Offences by Division	28
<u>Persons Charged</u>	
Persons Charged With Criminal Code Offences And Other Federal Statutes	29
Persons Charged With Criminal Code Traffic Offences	30
Persons Charged By Case Unit For Criminal Code And Other Federal Statutes	31

INTRODUCTION

The Toronto Police Service publishes crime statistics based upon the number of reported offences whereas Statistics Canada publishes crime statistics based on reported incidents of crime. In offence based statistics, all offences involved in an incident are included, whereas in incident based statistics, more than one offence may be included in one incident but only the most serious crime is included in the crime statistics. So care should be taken when comparing statistics published by both agencies.

Types of Offences

Violent Offences are crimes involving the application or threat of application of force to a person.

Property Offences involve unlawful acts with respect to property but do not involve the use or threat of violence against an individual.

Other Criminal Code offences include the remaining non-traffic *Criminal Code* offences that are classified as neither violent nor property offences.

C. D. S. A. Offences involve offences under the federal Controlled Drugs and Substances Act. These offences comprise of possession, trafficking, importation or cultivation of various illicit, controlled and restricted drugs.

Other Federal Statute offences include violations under all other federal statutes. They may include Bankruptcy Act, Customs Act, Excise Act, Immigration Act.

Provincial Statute offences include all violations under provincial statutes excepting traffic related statutes. Examples are Coroner's Act, Environmental Protection Act, Mental Health Act and Liquor Licence Act. The majority of these offences come under Liquor Licence Act.

General Information

Due to change in the interpretation of the Law, C. D. S. A. charges laid by Toronto Police Service are considerably lower since 2003.

In September 2003, the Toronto Police Service implemented a new records management system. As a result, statistics in this report for years prior to 2003 have been recalculated.

2005 Statistics at a Glance

- Reported **Criminal Code Offences** *excluding traffic offences* decreased 0.5% in 2005 over the previous year.
- **Violent Crime** increased 4.7% in 2005 from 2004.
- **Property Crime** decreased 3.3% in 2005 from 2004.
- **Other Criminal Code Offences** increased by 2.5% in 2005 from 2004.
- There were 79 homicides in 2005, up 23.4% from 2004.
- There were 2,723 sexual assaults in 2005 compared to 2,512 in 2004.
- Total non-sexual assaults increased by 3.7% in 2005 over 2004.
- Total robberies increased 5.7% in 2005 compared to 2004; robbery to banks and financial institutions decreased by 13.0% in 2005.
- Break and enters to houses decreased 45.2% in 2005 compared to 2004; entries to apartments increased 40.4%.
- There were 10,169 motor vehicles reported stolen in 2005 compared to 10,248 in 2004 (a decrease of 0.77%).
- On the Toronto roads: There were 54 fatal collisions in 2005, down 10.0% over the past year; and resulting in 59 fatalities. There were 11,128 injury collisions and 16,637 people were injured. The total number of reportable motor vehicle collisions stood at 55,040 in 2005 compared to 56,375 in 2004, a decrease of 2.4%.
- There were 772 complaints received against police officers in 2005, compared to 862 in 2004.
- Number of vehicles stopped by R.I.D.E. (Reduced Impaired Driving Everywhere) increased in 2005 by 22.56% to 275,660 compared to 224,923 in 2004.
- Total calls for service through Communications Centre decreased 2.5% while the total dispatched calls for service decreased 8.1% in 2005 over 2004. The Service reaches out to wider sections of the community by providing service in languages other than English through the AT&T Language Line Service. In 2005, there were 4,059 calls for service received in 60 languages other than English.

Glossary of Terms

Adult and Youth Charges: Refers to the total number of charges and alternative dispositions laid by police against adults (18 years or older) and youths (12 to 17 years of age).

Incident: An occurrence of an event (non-criminal or criminal). An incident may consist of a number of offences.

Offence: An offence is categorized as a violation against the Criminal Code of Canada, the Federal Controlled Drugs and Substances Act and other Federal, Provincial and Municipal statutes. The Toronto Police Service counts all offences occurring in a single incident. Statistics Canada's Uniform Crime Report (UCR) count only the most serious offences per incident.

Substantiated Offence: When an alleged criminal act is reported to the police, the offence is counted as a reported incident. The Toronto Police Service then conducts a preliminary investigation to determine the soundness of the report. In some occasions a crime reported to the police proves to be unsubstantiated. The unsubstantiated incidents are deducted from the number of reported offences to develop genuine offences data.

Clearance Rate: A criminal offence can be considered cleared when a charge is laid, recommended or cleared by other methods. For example, an offence is considered cleared when it has been solved. Cleared by a charge being laid indicates that a person(s) has been charged in connection with an incident. A clearance rate is calculated by dividing the total number of offences cleared by the total number of genuine offences reported in a year. The clearance rate may exceed 100% in a given year due to the fact that offences cleared may be offences that have occurred in previous years.

Property Offences: Property crime includes unlawful acts committed for the purpose of attaining property, but does not involve the use or threat of violence against an individual. Property crime includes actual and attempted motor vehicle theft, other theft, actual and attempted break and enter, possession of stolen property, and fraud

Violent Offences: Crimes involving the application or threat of application of force to a person. They include homicide, attempted murder, sexual assault, non-sexual assault, other sexual offences, abduction and robbery. Traffic incidents that result in death or bodily harm are included under Criminal Code Traffic Offences.

Other Criminal Code Offences: Includes the remaining non-traffic Criminal Code Offences that are classified as neither violent or property offences. For example bail violations, arson, and disturbing the peace are included in other Criminal Code Offences.

Criminal Code Traffic Offences: Includes dangerous driving, impaired driving, refuse breath/blood sample and failure to remain at the scene of an accident.

Drug Offences: Involves offenders under the Federal Controlled Drugs and Substances Act. These offences include possession, trafficking, import/export, and production of various illicit, controlled and restricted drugs.

Other Federal Statutes: Offences includes violations under the Youth Criminal Justice Act, Canada Health Act, Firearms Act, Immigration Act, Bankruptcy Act and other Federal statutes.

Provincial Acts: Includes all violations under Provincial statutes with the exception of traffic related statutes. Some examples include the Coroner's Act, Environmental Protection Act, Mental Health Act and the Liquor Licence Act.

Municipal Bylaws: Includes violations under the City of Toronto Municipal By-Laws.

Uniform Strength and Expenditures

TPS 2005 Statistical Report

	2001	2002	2003	2004	2005*
Population Served	2,594,205	2,618,605	2,643,842	2,669,936	2,696,909
Uniform Strength	5,028	5,119	5,295	5,242	5,227
Uniform Strength:Population	1:516	1:512	1:499	1:509	1:516
Actual Expenditures(Gross \$)	603,387,884	635,497,010	673,216,463	708,864,300	760,789,396*
Per Capita Cost*	232.59	242.69	254.64	265.50	282.10

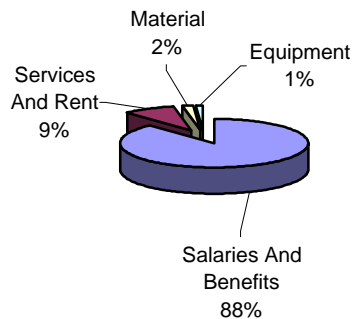
+ Estimate (based on projected expenditures).

Gross Operating Budget

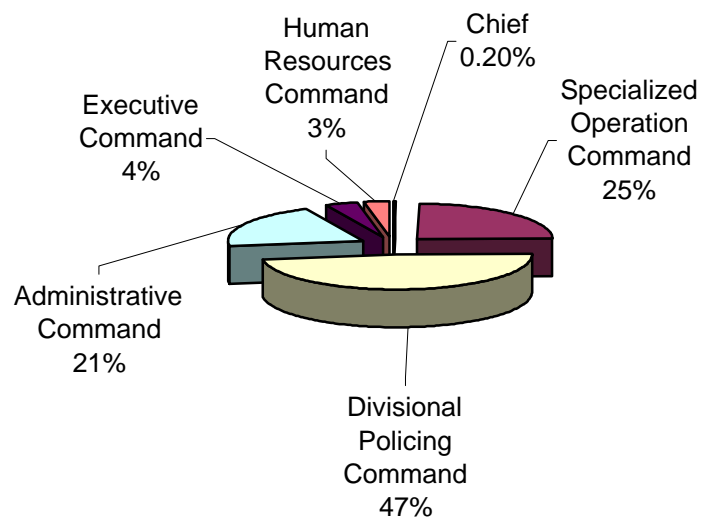
Year	Budget (\$)*	Change from Previous Year (\$)	% Change from Previous Year
2001	600,934,100	23,040,800	3.99
2002	634,336,300	33,402,200	5.56
2003	668,997,800	34,661,500	5.46
2004	708,864,300	39,866,500	5.96
2005	753,856,800	44,992,500	6.35

Gross Operating Budget

Distribution by Feature



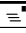
Distribution by Appropriation



Police Personnel by Rank and Classification*

TPS 2005 Statistical Report

	2001	2002	2003	2004	2005
Chief	1	1	1	1	1
Deputy Chief	2	2	2	1	4
Staff Superintendent	6	6	6	7	6
Superintendent	23	22	21	22	22
Staff Inspector	23	24	25	25	24
Inspector	38	35	33	34	35
Staff Sergeant/Detective Sergeant	259	257	260	266	271
Sergeant/Detective	900	922	922	911	903
Police Constable	3,776	3,850	4,025	3,975	3961
Total Uniform Strength	5,028	5,119	5,295	5,242	5,227
Chief Administrative Officer- Policing	1	1	1	1	1
Director	4	4	4	5	5
Parking Enforcement Officer	290	348	350	359	383
Court Officer	274	297	306	353	373
Document Server	14	15	19	17	19
Communications Operator	219	224	225	222	228
Cadets-in-Training	236	215	72	111	250
Custodial Officer	5	4	5	5	5
Other Civilians	1,219	1,194	1,056	1,131	1176
Total Civilian Strength	2,262	2,302	2,038	2,204	2,440
Grand Total	7,290	7,421	7,333	7,446	7,667

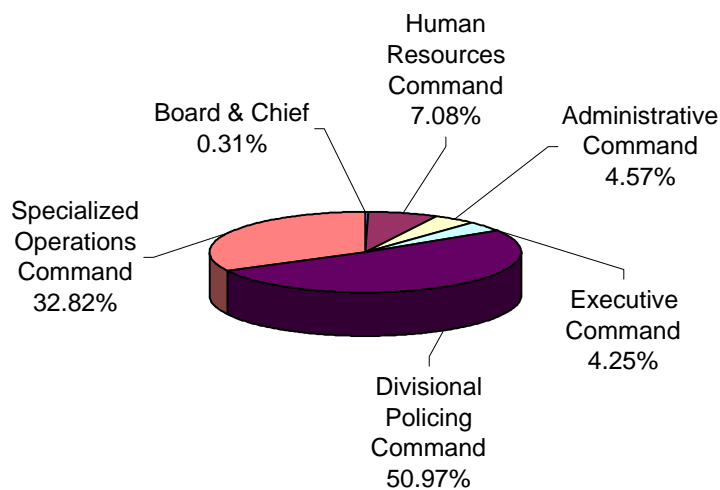
Auxiliary personnel**	535	628	570	640	707
Temporary Employee	115	177	173	121	92
School Crossing Guard 	695	714	692	699	693
Part-time Court Officer	169	170	183	175	159
Part-time Employee - other	105	120	104	121	108

* As of December 31, 2005

** Includes other volunteers

 Includes spares

Distribution of Personnel by Branches of the Service



Police Personnel by Division And Field Command (Actual)

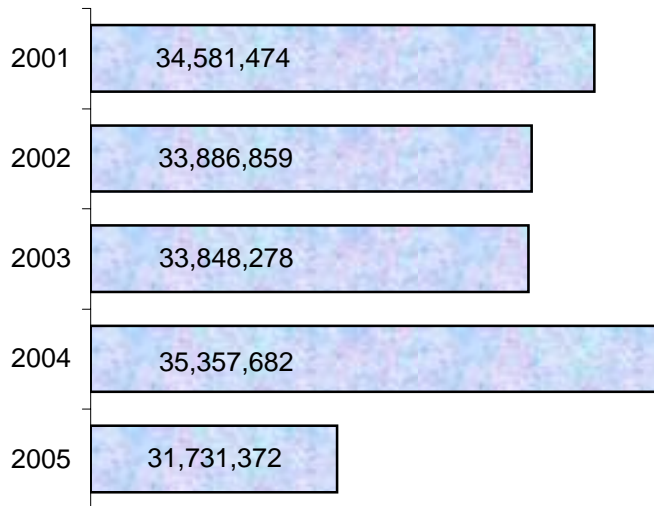
	Superintendent and Above	Staff Inspector	Inspector	Staff/Detective Sergeant	Sergeant/Detective	Police Constable	Uniform Strength	Civilian Strength	Total Strength	School Crossing Guard
CENTRAL FIELD COMMAND HQ	1	0	0	1	1	2	5	1	6	0
11 Division	0	1	0	7	31	138	177	10	187	36
12 Division	1	0	1	7	31	136	176	13	189	40
13 Division	0	1	1	8	31	148	189	9	198	53
14 Division	1	0	2	9	47	243	302	15	317	41
51 Division	1	0	1	8	43	193	246	12	258	28
52 Division	2	0	1	9	47	187	246	20	266	0
53 Division	0	1	0	6	30	136	173	11	184	53
54 Division	0	1	0	7	32	144	184	10	194	37
55 Division	1	0	1	9	36	163	210	13	223	61
Central Field Command*	7	4	7	71	329	1,490	1,908	114	2,022	349
AREA FIELD COMMAND HQ	1	0	0	2	1	2	6	1	7	0
22 Division	1	0	1	8	31	182	223	12	235	69
23 Division	1	0	1	7	31	168	208	11	219	50
31 Division	1	0	1	8	33	235	278	13	291	38
32 Division	1	0	1	8	31	207	248	11	259	47
33 Division	0	1	0	8	32	145	186	9	195	36
41 Division	1	0	1	9	46	246	303	14	317	51
42 Division	1	0	1	12	35	296	345	15	360	53
Area Field Command*	7	1	6	62	240	1481	1797	86	1883	344
POC	1	0	0	0	0	0	1	1	2	0
Grand Total	15	5	13	133	569	2,971	3,706	201	3,907	693

* Includes those assigned to Field Command Headquarters.

Does not include temporary and part-time civilian members.

	2001	2002	2003	2004	2005
Cars	1,228	1,231	1,315	1,316	1,331
Motorcycles	138	137	108	113	104
Other	145	141	92	106	113
Total Vehicles	1,511	1,509	1,515	1,535	1,548
Boats	19	19	24	19	22
Horses	25	26	29	29	28

Total Kilometres Driven by Police Vehicles



Classification of Incoming Calls

Calls Received at Communications Centre				Dispatched	Other
Year	Emergency*	Non-Emergency□	Total	Calls	Calls**
2001	983,343	886,119	1,869,462	864,095	1,056,103
2002	1,036,355	883,843	1,920,198	880,271	1,076,723
2003	1,052,464	904,530	1,956,994	926,697	976,070
2004	1,000,898	901,869	1,902,767	869,590	985,250
2005	968,590	886,250	1,854,840	799,151	1,055,689

* 9-1-1 Emergency Calls.

** Advised, transferred, or no action taken.

□ Includes Non-emergency calls, Alarms, Parking Complaints, TTC, RIDE program, and other calls which include Administration, Internal etc.

AT&T Language Line Service (Calls made in languages other than English)

Number of Calls and top 10 ranks in 2000-2004*

Language	2001	2002	2003	2004	2005
Chinese	854(1)	1,076(1)	1166(1)	1350(1)	1880(1)
Spanish	353(2)	441(2)	460(2)	517(2)	496(2)
Vietnamese	244(3)	197(3)	180(3)	155(3)	187(3)
Italian	128(6)	190(4)	151(5)	149(5)	130(7)
Portuguese	146(5)	129(7)	156(4)	155(3)	179(4)
Tamil	167(4)	138(5)	120(7)	119(6)	155(6)
Korean	128(6)	128(8)	138(6)	150(4)	179(4)
Russian	94(9)	117(9)	100(8)	113(7)	159(5)
French	102(8)	132(6)	98(9)	98(9)	97(9)
Polish	106(7)	84(10)	91(10)	110(8)	85(10)
Punjabi	57	64	60	55	63
Farsi	44	47	60	84(10)	105(8)
Greek	21	37	30	23	24
Hungarian	59(10)	50	35	27	19
Arabic	34	13	20	25	18
Somali	13	17	25	21	31
Japanese	20	7	18	19	43
Hindi	15	22	22	27	22
Urdu	13	19	30	34	28
Turkish	18	37	16	21	15
German	0	10	5	6	6
Croatian	1	8	5	7	3
Total**	2,712	3,081	3,087	3,265	4,059

* Top Ten ranking shown in bracket

** Including other non-English languages

In the year 2005, 4,059 calls were made in 60 languages other than English.

Public Complaints

TPS 2005 Statistical Report

	2001	2002	2003	2004	2005
Total Complaints Received	742	704	735	862	772

Complaints Investigated	2001	2002	2003	2004	2005
Conduct - Less Serious	371	358	382	416	459
Conduct - Serious	125	131	119	98	85
Policy	1	1	2	3	2
Service	10	12	11	38	20

Type of Complaint	2001	2002	2003	2004	2005
Discreditable Conduct	308	321	363	305	301
Insubordination	2	3	4	7	9
Neglect of Duty	81	61	49	79	75
Deceit	3	3	2	1	0
Breach of Confidence	5	4	3	0	1
Corrupt Practice	5	4	3	3	2
Unlawful or Unnecessary Exercise of Authority	91	85	62	109	155
Damage to Clothing or Equipment	0	0	0	0	0
Consuming Drug or Alcohol in a Manner Prejudicial to Duty	0	0	0	0	0
Policy	1	1	2	3	2
Service	10	12	11	38	20
Unclassified	1	8	15	10	1
Total Allegations	507	502	514	555	566

Investigation Outcome	2001	2002	2003	2004	2005
Unsubstantiated	119	120	157	171	195
Informal Resolutions	114	90	79	83	92
Withdrawn	164	118	93	93	97
Misconduct Identified					
Unit Level Discipline	10	7	5	4	7
Hearings	2	2	5	2	1
Policy/Service - Action Taken	1	0	0	1	2
No Further Action - Not Investigated	217	207	219	293	198
Not Concluded By December 31	115	160	177	215	180
TOTAL	742	704	735	862	772

Complaints - Not Investigated	2001	2002	2003	2004	2005
Frivolous	127	121	100	146	93
Vexatious	0	2	11	17	3
Made in Bad Faith	20	22	14	12	0
Not Directly Affected	16	19	37	45	26
Not Signed	4	2	10	14	5
Over 6 Months	46	18	26	46	70
Non-Jurisdiction	22	18	23	27	9
TOTAL	235	202	221	307	206

Community Based and Miscellaneous Policing Statistics

Community Information/ Crime Prevention - Community Relations

	2001	2002	2003	2004	2005
Communities Involved in Neighbourhood Watch	758	772	1,064	846	891
Homes Involved in Neighbourhood Watch	399,067	408,406	381,702	447,915	477,649
Crime Prevention Presentations	1,702	1,437	1,761	2,237	2,824
Community Relations Presentations	2,383	2,096	10,907	11,872*	7,877
Substance Abuse/Safety Presentations	1,113	1,371	4,027	4,207*	1,580

*Includes school lectures, substance abuse and safety presentations conducted by Community School Liaison Officers to school children.

Intelligence Services

Hate/Bias Crime Occurrences**	338	219	149	163	132
-------------------------------	-----	-----	-----	-----	-----

**Detailed information pertaining to Toronto Police Service (TPS) Hate / Bias Crime Occurrences is available in the Hate Bias Crime Statistical Report available on the TPS website at www.TorontoPolice.on.ca.

R.I.D.E.(Reduced Impaired Driving Every where) Year Round Statistics - Traffic Services

Vehicles Stopped	154,536	170,891	135,712	224,923	275,660
Charges Laid	257	244	231	206	310

Alarm Program - Communications Support

Valid Alarms	1,000	1,059	1,136	1,066	938
False Alarms	26,883	29,042	29,956	31,048	28,982

Victim Services***

Total Incidents	5,958	7,523	8,324	8,753	16,767
Telephone Assisted	5,674	7,205	7,788	8,253	14,397
On Scene	284	318	536	500	2,370
Domestic Related	3,932	4,779	3,422	4,160	13,665

***The numbers for 2005 now also include requests to the Domestic Violence Emergency Response System (DVERS) and Supportlink programs.

Other Programs - Industrial Liaison

Labour disputes attended	53	36	28	32	29
Potential dispute contacts	20	16	14	21	27

Volunteer Resources (Hours Volunteered)

	51,255	45,000	85,000	73,386	51,200
--	--------	--------	--------	--------	--------

Crime Stoppers****

Arrests	273	191	216	474	415
Charges Laid	889	530	703	1,808	1,822

**** City of Toronto statistics only.

Community Relations/Community Liaison/Miscellaneous

Type of Presentation	Number of Presentations	Persons Attending
Speaking Engagements	399	16,849
School Lectures	6,640	159,360
Lectures to Reliefs/Platoons	108	2,171
Community Meeting Attended	1,729	20,156
Station Tours	144	2,030
Sub-Total	9,020	200,566
Media Relations(Radio, TV, Newspaper, Other Publications)*	207	28,064,581*
Major Cultural Events- Co-ordinated/Assisted	104	3,298,429
Visits (Divisional Units, Specialized Units, Agencies)	251	5,027
Special Projects (Initiatives/Coordinated/Assisted)	448	153,048
External Presentation	135	11,172
Internal Presentation/Lectures	34	679
External Meeting/Lectures	356	2,137
Internal Meeting	301	1,743
Divisional Assistance/Support Lectures	135	154,473
Conference/Seminars	15	1,408
Other Duties	604	13,716
Sub-Total	2,590	31,706,413
Grand Total	11,610	31,906,979

*Includes presentations by Community School Liaison Officers.

*The figure 28,064,581 includes audience/readership of TV, Radio, News Papers and other Publications.

Substance Abuse/Safety Presentation:	Count
Streetproofing	1,253
Alcohol and Drugs	393
Law	403
Sexual Abuse	20
Abuse of elderly	82
Family violence	129
Total	2,280

Crime Prevention

Type of Presentation	Number of Presentations	Persons Attending
Neighbourhood Watch	125	4,189
Home security/High-rise security	339	4,713
Office security	305	1,954
Personal safety	773	8,331
Senior citizen safety	128	3,979
Victims of crime	731	965
Other	423	18,242
Total	2,824	42,373
Communities involved in Neighbourhood Watch		891
Homes involved in Neighbourhood Watch		477,649
Banks and Business premises visited		1,348
Serious break and enter call-backs		1,553
Crime prevention pamphlets distributed		65,932
Community Safety Audit Conducted		938
Crime prevention through environmental design(CPTED Audits) conducted		347

General Data by Division and Field Command

TPS 2005 Statistical Report

	Estimated Population	Area (sqkm)	Estimated Gross Expenditures(\$)	Dispatched calls	Motor Vehicles		Bicycles Stolen
					Stolen	Recovered	
11 Division	103,301	15.2	14,571,862	28,272	243	149	201
12 Division	99,732	17.9	15,584,670	30,059	390	379	70
13 Division	144,683	18.6	16,252,954	32,031	295	162	135
14 Division	157,054	16.0	27,582,493	50,908	445	281	602
51 Division	91,781	8.6	18,633,089	42,765	391	338	446
52 Division	33,025	5.0	27,286,361	29,273	196	122	564
53 Division	177,761	31.2	14,151,862	33,763	369	190	299
54 Division	143,304	20.2	15,814,603	32,717	384	323	159
55 Division	122,474	20.3	19,348,294	33,382	393	370	372
Central Command	1,073,115	152.9	169,226,188	313,170	3,106	2,314	2,848
22 Division	198,416	67.9	19,345,018	38,271	711	427	234
23 Division	167,724	57.5	18,704,130	32,507	744	466	104
31 Division	197,430	51.1	23,754,362	44,160	1024	761	103
32 Division	219,292	60.9	21,448,399	39,331	891	442	235
33 Division	196,577	52.7	15,992,740	31,670	524	339	97
41 Division	216,397	53.0	26,937,889	46,015	996	729	127
42 Division	427,958	135.0	28,185,938	61,355	1662	1,253	222
Area Command	1,623,794	478.1	154,368,476	293,309	6,552	4,417	1,122
Toronto	2,696,909	631.0	323,594,664*	799,151**	10,169*	8,036**	3,971

*Includes Division totals only.

The grand total of the estimated gross expenditure of the Service was \$760,789,396.

** Includes 84,207 CARU calls, 97,724 Parking Enforcement Unit Dispatched Events, 571 Marine Unit Events and 10,170 other front line calls.

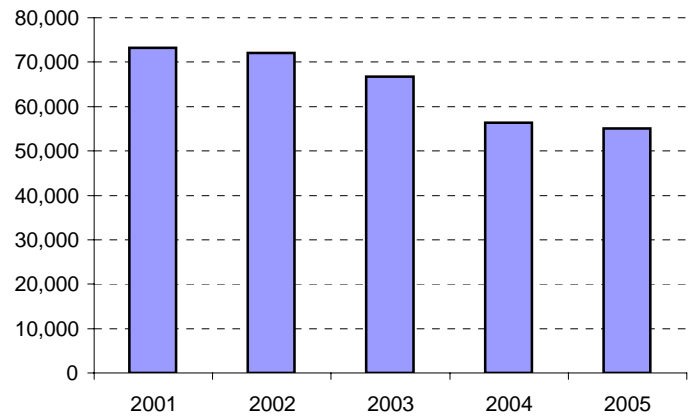
*" Includes 103 motor vehicles stolen from undetermined locations, motorcycles, snow vehicles and all attempts.

"**" Includes 1,305 motor vehicles recovered from unspecified / out of town locations.

Source for all figures: Toronto Traffic Data Centre and Safety Bureau

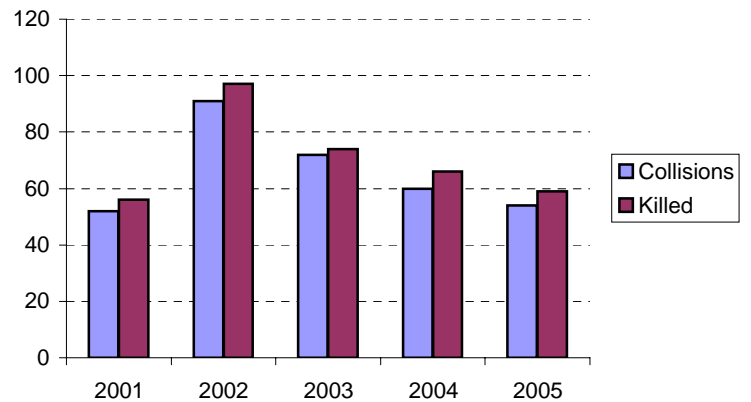
Total Collisions (Excludes Non-Reportable Collisions)

Year	Total	% Change	Non-Reportable
2001	73,174	0.7	N/A
2002	72,100	-1.5	N/A
2003	66,704	-7.5	N/A
2004	56,375	-15.5	N/A
2005	55,040	-2.4	N/A



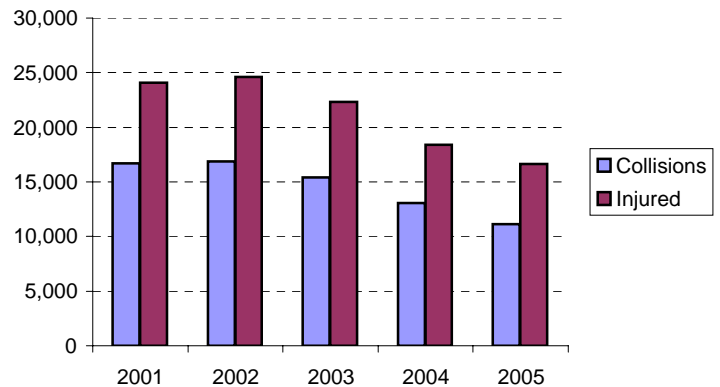
Fatal Collisions and Persons Killed

Year	Collisions	% Change	Killed
2001	52	-14.8	56
2002	91	75.0	97
2003	72	-20.9	74
2004	60	-16.7	66
2005	54	-10.0	59



Injury Collisions and Persons Injured

Year	Collisions	% Change	Injured
2001	16,726	-4.2	24,103
2002	16,894	1.0	24,636
2003	15,384	-8.9	22,318
2004	13,093	-14.9	18,409
2005	11,128	-15.0	16,637



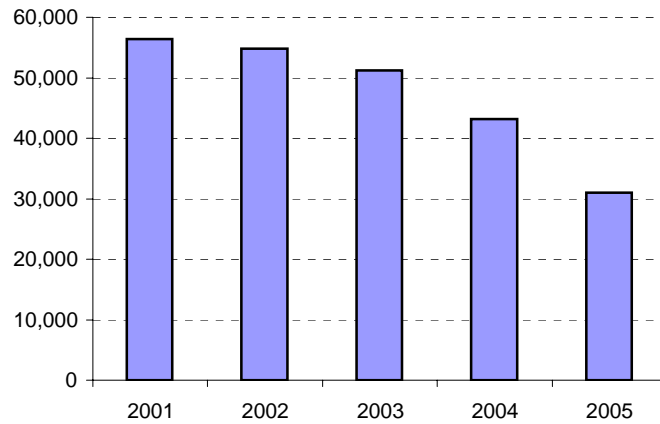
General Note: 2005 statistics are unofficial as Toronto Traffic Data Centre and Safety Bureau has not yet officially released them as of press time. However, any variances to these figures will be minimal.

Detailed Toronto Traffic Collisions information can be found in the Transportation Services Traffic Management Centre section of the City of Toronto Website.

Source for all figures: Toronto Traffic Data Centre and Safety Bureau

Property Damage Collisions

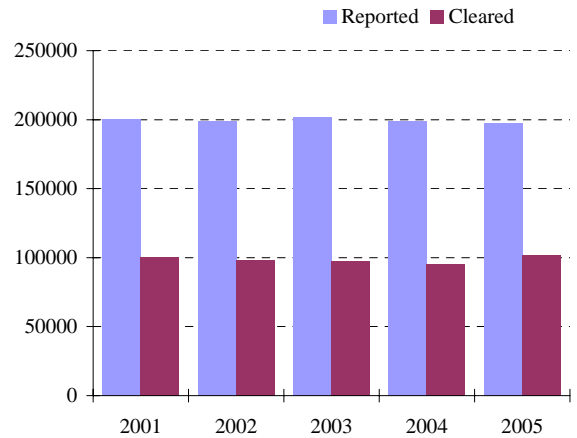
Year	Collisions	% Change
2001	56,399	2.4
2002	54,830	-2.8
2003	51,227	-6.6
2004	43,221	-15.6
2005	31,053	-28.2



General Note: 2005 statistics are unofficial as Toronto Traffic Data Centre and Safety Bureau has not yet officially released them as of press time. However, any variances to these figures will be minimal.

Total Criminal Code Offences*

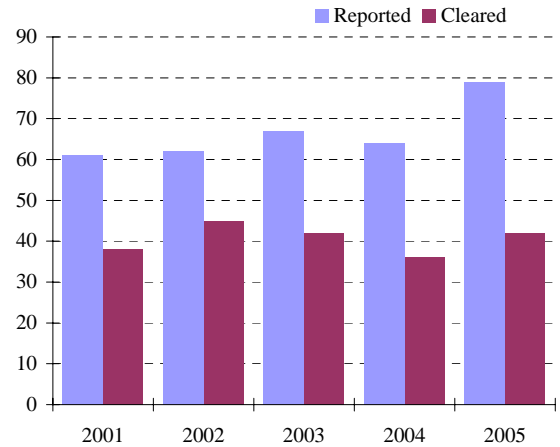
Year	Reported	% Change	Rate Per 100K* Population	Cleared	% Cleared
2001	200105	1.6	7,713.5	100519	50.2
2002	199171	-0.5	7,606.0	98466	49.4
2003	201635	1.2	7,626.6	97418	48.3
2004	198898	-1.4	7,449.5	95423	48.0
2005	197810	-0.5	7,334.7	101806	51.5



Excluding Criminal Code traffic offences. Statistical Reports published prior to 1997 included Criminal Code traffic offences. Figures were revised for years 2001 - 2004.

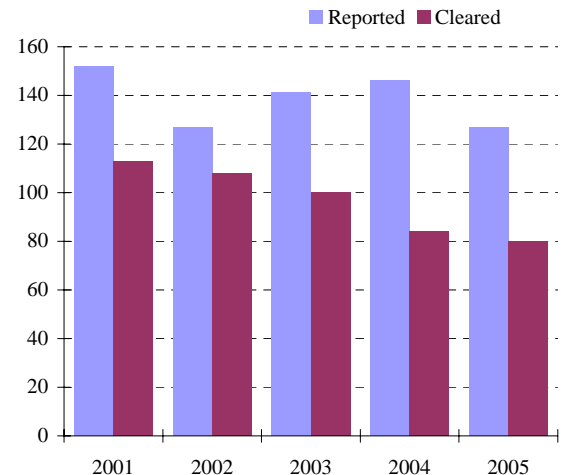
Homicides

Year	Reported	% Change	Rate Per 100K* Population	Cleared	% Cleared
2001	61	0.0	2.4	38	62.3
2002	62	1.6	2.4	45	72.6
2003	67	8.1	2.5	42	62.7
2004	64	-4.5	2.4	36	56.3
2005	79	23.4	3.0	42	53.2



Robberies (Financial Institutions only)

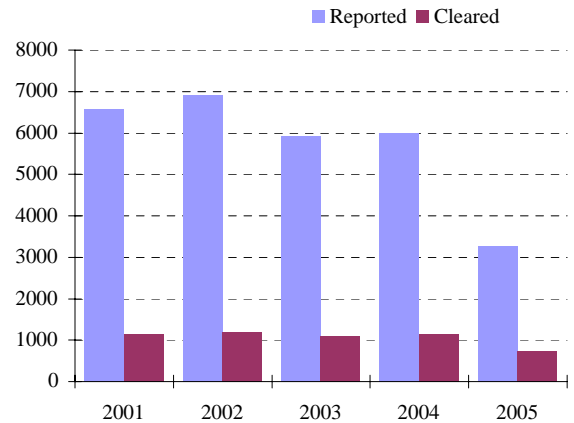
Year	Reported	% Change	Rate Per 100K* Population	Cleared	% Cleared
2001	152	-29.0	5.9	113	74.3
2002	127	-16.4	4.8	108	85.0
2003	141	11.0	5.3	100	70.9
2004	146	3.5	5.5	84	57.5
2005	127	-13.0	4.8	80	63.0



* Per 100,000 Population

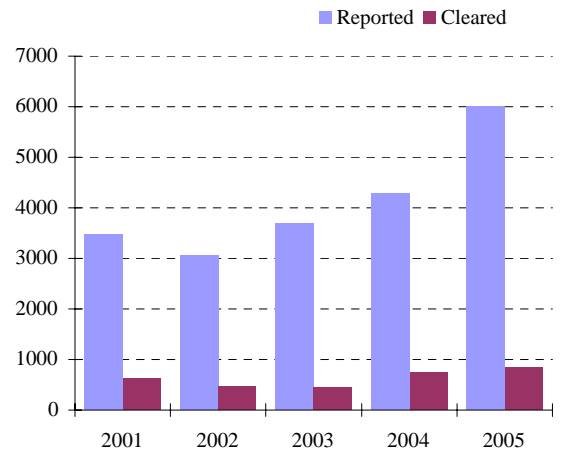
Break and Enter - Houses

Year	Reported	% Change	Rate Per 100K* Population	Cleared	% Cleared
2001	6572	0.4	253.3	1149	17.5
2002	6912	5.2	264.0	1193	17.3
2003	5919	-14.4	223.9	1101	18.6
2004	5985	1.1	224.2	1139	19.0
2005	3278	-45.2	121.5	738	22.5



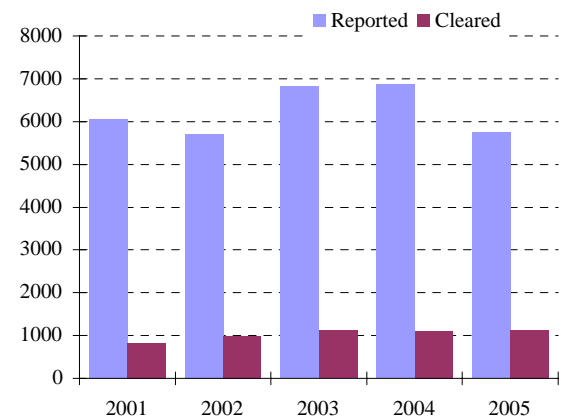
Break and Enter - Apartments

Year	Reported	% Change	Rate Per 100K* Population	Cleared	% Cleared
2001	3482	-1.2	134.2	624	17.9
2002	3051	-12.4	116.5	466	15.3
2003	3693	21.0	139.7	437	11.8
2004	4281	15.9	160.3	751	17.5
2005	6011	40.4	222.9	835	13.9



Break and Enter - Business Premises

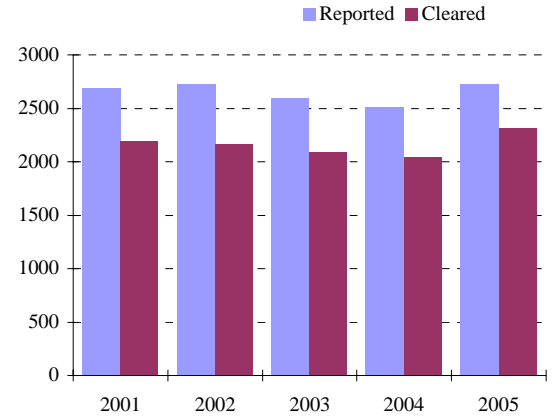
Year	Reported	% Change	Rate Per 100K* Population	Cleared	% Cleared
2001	6063	7.6	233.7	820	13.5
2002	5717	-5.7	218.3	983	17.2
2003	6813	19.2	257.7	1119	16.4
2004	6861	0.7	257.0	1106	16.1
2005	5744	-16.3	213.0	1135	19.8



* Per 100,000 Population

Sexual Assaults*

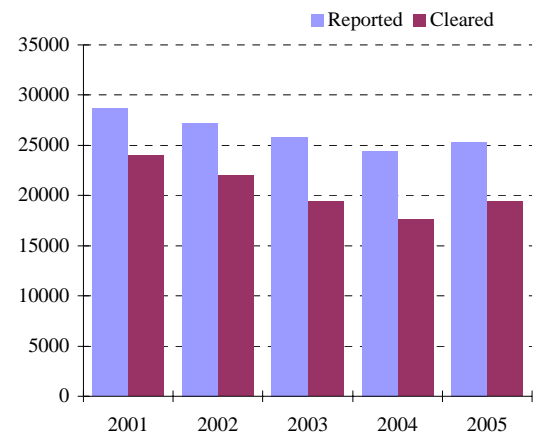
Year	Reported	% Change	Rate Per 100K* Population	Cleared	% Cleared
2001	2692	-1.0	103.8	2196	81.6
2002	2731	1.4	104.3	2164	79.2
2003	2600	-4.8	98.3	2094	80.5
2004	2512	-3.4	94.1	2046	81.4
2005	2723	8.4	101.0	2309	84.8



* Includes "non-assaultive" sexual offences(e.g. Invitation to Sexual Touching; Sexual Exploitation etc.)

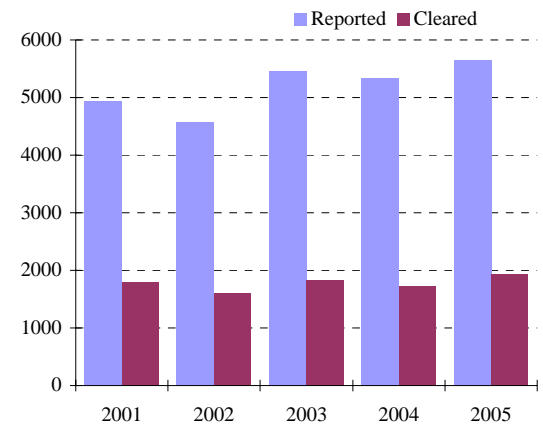
Non-Sexual Assaults

Year	Reported	% Change	Rate Per 100K* Population	Cleared	% Cleared
2001	28719	3.2	1,107.0	23954	83.4
2002	27219	-5.2	1,039.4	21993	80.8
2003	25829	-5.1	976.9	19377	75.0
2004	24423	-5.4	914.7	17626	72.2
2005	25337	3.7	939.5	19365	76.4



Robberies (Including financial institution)

Year	Reported	% Change	Rate Per 100K* Population	Cleared	% Cleared
2001	4938	4.3	190.3	1802	36.5
2002	4581	-7.2	174.9	1604	35.0
2003	5462	19.2	206.6	1836	33.6
2004	5339	-2.3	200.0	1725	32.3
2005	5645	5.7	209.3	1932	34.2



* Per 100,000 Population

VIOLENT CRIME, PROPERTY CRIME, OTHER CRIME AND CRIMINAL CODE TRAFFIC OFFENCES

Year	VIOLENT CRIME(1)			PROPERTY** CRIME(2)			OTHER** CRIME(3)			C. C. TRAFFIC OFFENCES(4)			TOTAL C. C. OFFENCES(5)		
	OFFENCE	CHANGE %	CLEAR* %	OFFENCE	CHANGE %	CLEAR* %	OFFENCE	CHANGE %	CLEAR* %	OFFENCE	CHANGE %	CLEAR* %	OFFENCE	CHANGE %	CLEAR* %
2001	37057	3.1	76.9	117034	1.9	27.9	46014	-0.4	85.5	4813	17.5	98.9	204,918	1.9	51.4
2002	35186	-5.0	74.7	117721	0.6	28.1	46264	0.5	84.5	4623	-3.9	99.0	203,794	-0.5	50.6
2003	34592	-1.7	68.8	119604	1.6	28.7	47439	2.5	81.9	4443	-3.9	97.9	206,078	1.1	49.0
2004	32948	-4.8	68.8	116936	-2.2	30.5	49014	3.3	77.7	4403	-0.9	98.8	203,301	-1.3	49.1
2005	34496	4.7	69.6	113053	-3.3	33.1	50261	2.5	80.4	4194	-4.7	98.8	202,004	-0.6	52.4

* Clearance rate

** 'Mischief' offences are included under 'Property Crime'. For the purposes of other reports, 'mischief' offences may be included under 'Other Criminal Code'.

Categories of Crime:

- (1) **Violent crime** includes homicide and homicide related offences, sexual assaults, sexual offences, non-sexual assaults, abduction, and robberies.
- (2) **Property crime** includes break and enter, all types of thefts, possession of stolen goods, fraud and mischief.
- (3) **Other crime** includes all other non-traffic Criminal Code offences not covered in categories (1) and (2).
- (4) **C. C. Traffic offences** include all Criminal Code traffic offences excluding criminal code 'Fail to Remain' traffic offences.
- (5) **Total C. C. offences** include all the above four categories. Only Criminal Code offences are shown.

VIOLENT CRIME, PROPERTY CRIME, OTHER CRIME AND CRIMINAL CODE TRAFFIC OFFENCES

UNIT	VIOLENT CRIME(1)			PROPERTY* CRIME(2)			OTHER* CRIME(3)			C. C. TRAFFIC OFFENCES(4)			TOTAL C. C. OFFENCES(5)		
	OFFENCE	RATE*	CLEAR %	OFFENCE	RATE*	CLEAR %	OFFENCE	RATE*	CLEAR %	OFFENCE	RATE*	CLEAR %	OFFENCE	RATE*	CLEAR %
D11	1163	1,126	72.4	3738	3,619	26.4	1784	1,727	82.7	258	250	88.8	6,943	6,721	51.3
D12	1504	1,508	73.7	3721	3,731	36.6	2186	2,192	86.2	240	241	110.8	7,651	7,672	60.0
D13	1591	1,100	74.9	3801	2,627	28.3	1779	1,230	79.5	158	109	95.6	7,329	5,066	52.4
D14	2647	1,685	68.4	8920	5,680	27.6	3085	1,964	79.9	332	211	110.2	14,984	9,541	47.2
D51	2083	2,270	72.9	7020	7,649	32.1	2809	3,061	86.6	151	165	128.5	12,063	13,143	52.7
D52	1827	5,532	69.3	8386	25,393	37.2	6230	18,864	75.9	175	530	85.1	16,618	50,319	55.9
D53	1391	783	76.9	7042	3,962	30.0	1538	865	73.5	134	75	109.7	10,105	5,685	44.0
D54	1723	1,202	78.6	4501	3,141	41.7	2212	1,544	86.5	213	149	103.3	8,649	6,035	61.9
D55	2160	1,764	72.7	6778	5,534	39.6	2335	1,907	86.3	191	156	96.9	11,464	9,360	56.3
C. F. C.	16,089	1,499	72.9	53,907	5,023	33.3	23,958	2,233	81.2	1,852	173	98.7	95,806	8,928	53.2
D22	1800	907	73.5	7303	3,681	30.1	2676	1,349	73.7	351	177	99.7	12,130	6,113	50.0
D23	1946	1,160	64.3	5993	3,573	32.4	2261	1,348	70.5	238	142	99.2	10,438	6,223	49.7
D31	3381	1,713	69.2	7427	3,762	30.7	4303	2,180	70.5	269	136	100.0	15,380	7,790	54.1
D32	1923	877	66.8	8965	4,088	30.6	3103	1,415	66.6	289	132	97.6	14,280	6,512	46.4
D33	1540	783	72.3	5409	2,752	32.1	1885	959	67.6	200	102	97.0	9,034	4,596	49.3
D41	3235	1,495	70.7	9182	4,243	39.7	5269	2,435	69.5	445	206	99.3	18,131	8,379	58.2
D42	4102	959	62.3	12588	2,941	29.5	4791	1,120	72.3	490	114	98.8	21,971	5,134	47.0
A. F. C.	17,927	1,104	67.8	56,867	3,502	32.1	24,288	1,496	77.7	2,282	141	98.9	101,364	6,242	50.8
NSA	480		67.1	2,279		53.9	2,015		92.2	60		96.7	4,834		71.7
Toronto	34,496	1,279	70.2	113,053	4,192	33.1	50,261	1,864	80.0	4,194	156	98.8	202,004	7,490	52.4

NSA-Not Specified Area, C. F. C. - Central Field Command, A. F. C. - Area Field Command

Categories of Crime:

(1) **Violent crime** includes homicide and homicide related offences, sexual assaults, sexual offences, non-sexual assaults, abduction, and robberies.

(2) **Property crime** includes break and enter, all types of thefts, possession of stolen goods, fraud, and mischief.

(3) **Other crime** includes all other non-traffic Criminal Code offences not covered in categories (1) and (2).

(4) **C. C. Traffic offences** include all Criminal Code traffic offences excluding criminal code 'Fail to Remain' traffic offences.

(5) **Total C. C. offences** include all the above four categories. Only Criminal Code offences are shown.

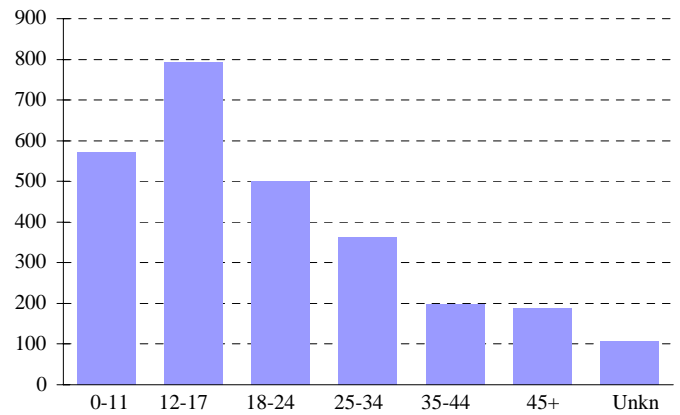
** Rate per 100,000 of population
No allowance was given to
transient or commuting population.*

* 'Mischief' offences are included under 'Property Crime'. For the purposes of other reports, 'mischief' offences may be included under 'Other Criminal Code'.

Sexual Assaults*

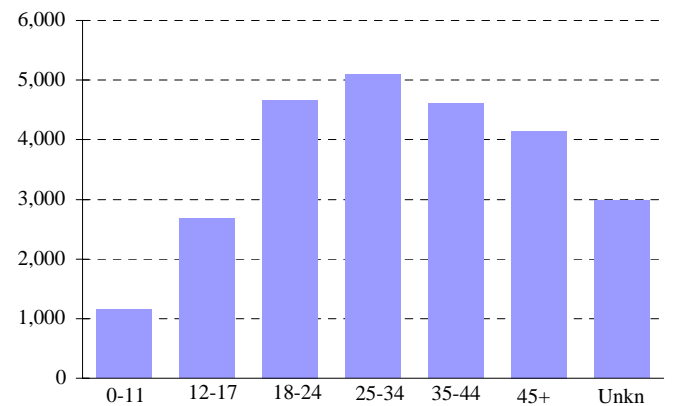
Age	Males	Females	Unknown	Total	% of Total
0-11	152	420	0	572	21.01
12-17	60	732	1	793	29.12
18-24	15	484	2	501	18.40
25-34	18	346	0	364	13.37
35-44	17	179	3	199	7.31
45+	14	173	0	187	6.87
Unkn	8	49	50	107	3.93
Total	284	2,383	56	2,723	100.00

* Includes "non-assaultive" sexual offences (e.g. Invitation to Sexual Touching; Sexual Exploitation etc.)



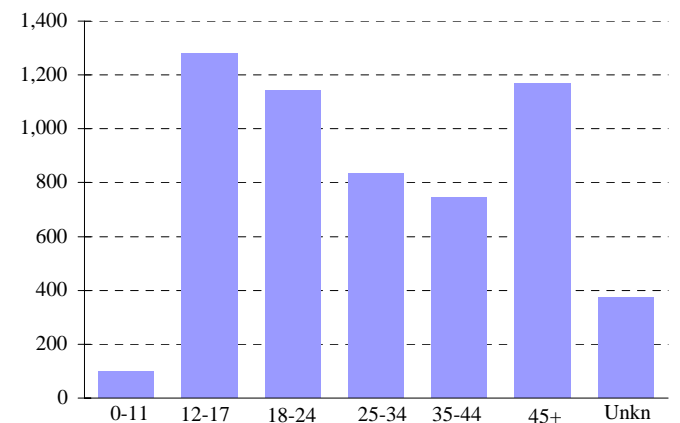
Non-Sexual Assaults

Age	Males	Females	Unknown	Total	% of Total
0-11	742	393	15	1,150	4.54
12-17	1430	1242	16	2,688	10.61
18-24	2103	2556	12	4,671	18.44
25-34	2254	2830	10	5,094	20.10
35-44	2156	2440	10	4,606	18.18
45+	2,213	1,915	14	4,142	16.35
Unkn	1,755	572	659	2,986	11.79
Total	12,653	11,948	736	25,337	100.00



Robberies

Age	Males	Females	Unknown	Total	% of Total
0-11	84	15	2	101	1.79
12-17	1097	182	3	1,282	22.71
18-24	848	289	5	1,142	20.23
25-34	549	282	4	835	14.79
35-44	504	238	4	746	13.22
45+	718	445	4	1,167	20.67
Unkn	95	35	242	372	6.59
Total	3,895	1,486	264	5,645	100.00

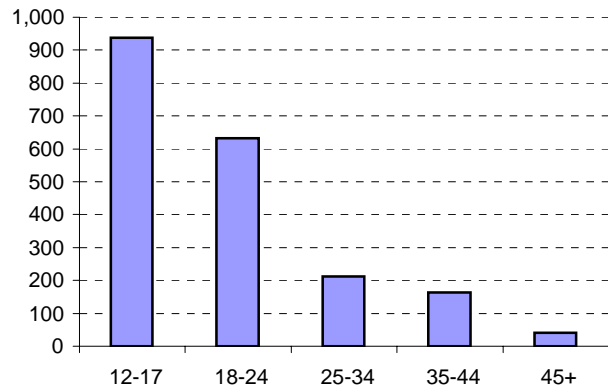


Persons Charged by Age and Sex

TPS 2005 Statistical Report

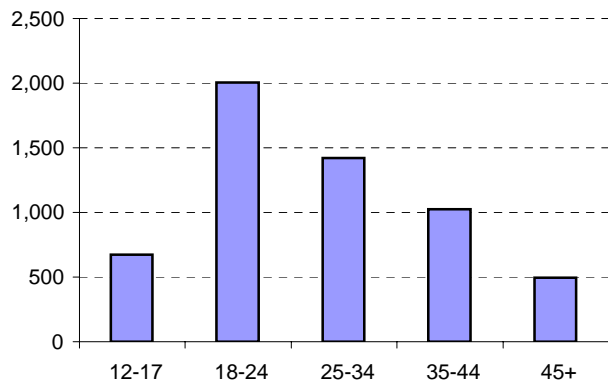
Robberies

Age	Males	Females	Total	% of Total
12-17	848	89	937	47.16
18-24	582	51	633	31.86
25-34	180	32	212	10.67
35-44	144	20	164	8.25
45+	33	8	41	2.06
Total	1,787	200	1,987	100.00



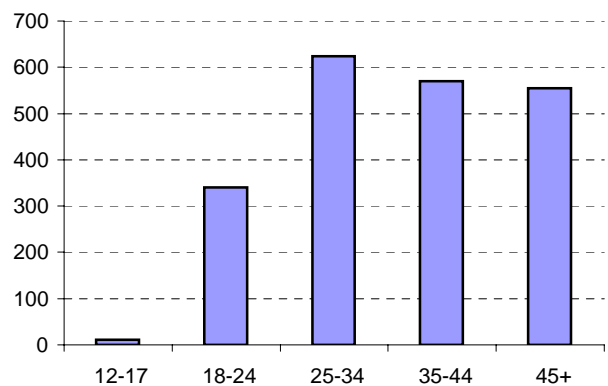
Controlled Drugs and Substances Act

Age	Males	Females	Total	% of Total
12-17	601	70	671	11.94
18-24	1,807	199	2,006	35.70
25-34	1,235	185	1,420	25.27
35-44	844	183	1,027	18.28
45+	428	67	495	8.81
Total	4,915	704	5,619	100.00



Drinking and Driving Offences

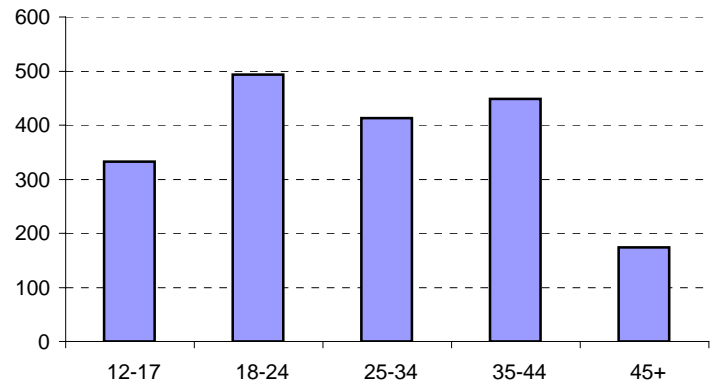
Age	Males	Females	Total	% of Total
12-17	11	0	11	0.52
18-24	302	39	341	16.23
25-34	555	69	624	29.70
35-44	505	65	570	27.13
45+	500	55	555	26.42
Total	1,873	228	2,101	100.00



Persons Charged by Age and Sex

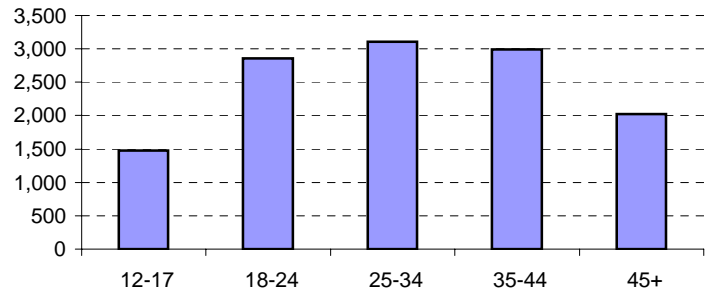
Break and Enters

Age	Males	Females	Total	% of Total
12-17	285	47	332	17.84
18-24	452	41	493	26.49
25-34	374	39	413	22.19
35-44	423	26	449	24.13
45+	162	12	174	9.35
Total	1,696	165	1,861	100.00



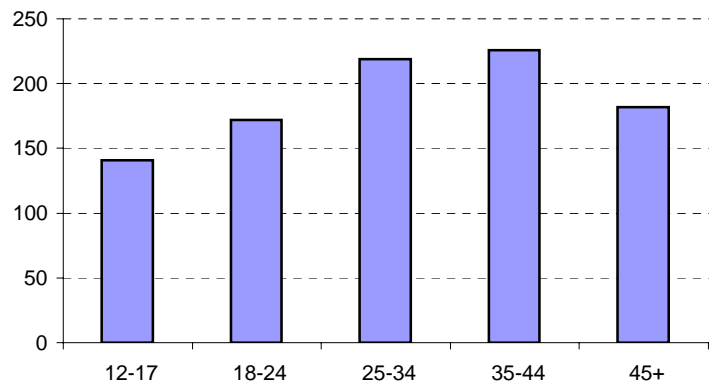
Non-Sexual Assaults

Age	Males	Females	Total	% of Total
12-17	1,098	383	1,481	11.88
18-24	2,367	494	2,861	22.94
25-34	2,619	490	3,109	24.93
35-44	2,504	489	2,993	24.00
45+	1,747	278	2,025	16.24
Total	10,335	2,134	12,469	100.00



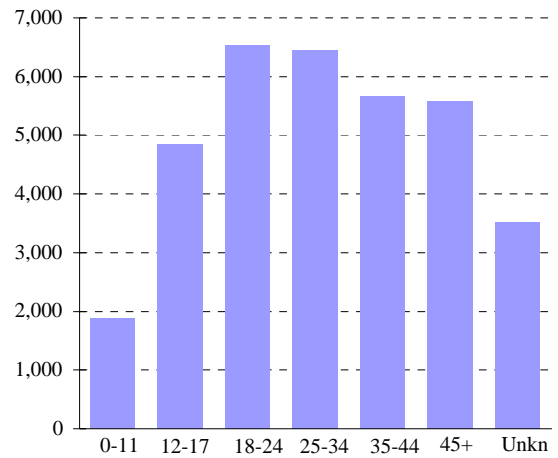
Sexual Assaults

Age	Males	Females	Total	% of Total
12-17	138	3	141	15.00
18-24	171	1	172	18.30
25-34	216	3	219	23.30
35-44	224	2	226	24.04
45+	178	4	182	19.36
Total	927	13	940	100.00



Violent Crime*

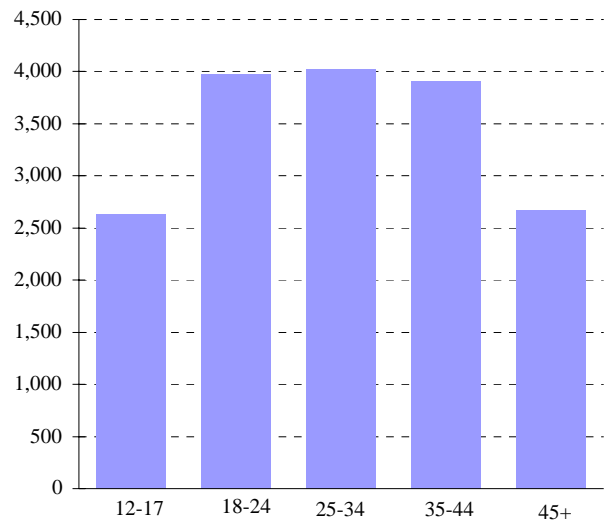
Age	Males	Females	Unknown	Total	% of Total
0-11	1,002	851	18	1,871	5.42
12-17	2,617	2220	20	4,857	14.08
18-24	3,098	3430	19	6,547	18.98
25-34	2,912	3528	14	6,454	18.71
35-44	2,728	2923	17	5,668	16.43
45+	2,978	2584	18	5,580	16.18
Unkn	1,879	672	968	3,519	10.20
Total	17,214	16,208	1,074	34,496	100.00



* **Violent crime** includes homicide and homicide related offences, sexual assaults, sexual offences, non-sexual assaults, abduction, and robberies.

Persons charged for violent crime

Age	Males	Females	Total	% of Total
12-17	2,123	513	2,636	15.31
18-24	3,380	598	3,978	23.10
25-34	3,442	587	4,029	23.39
35-44	3,319	589	3,908	22.69
45+	2,341	331	2,672	15.51
Total	14,605	2,618	17,223	100.00



☰ These are violent offences against persons and not the number of persons(victims).
A person can be a victim of more than one offence.

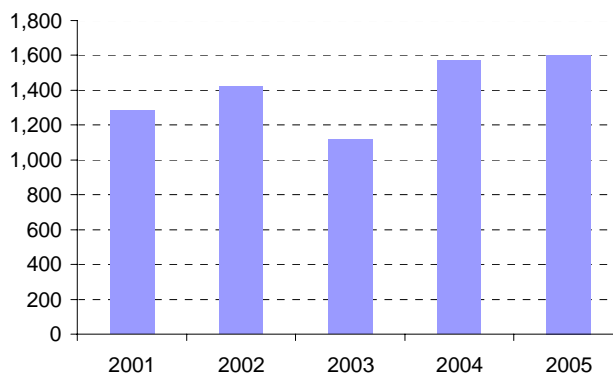
Selected Offences Against Police Officers

TPS 2005 Statistical Report

	2001	2002	2003	2004	2005
Attempted Murder	5	4	2	3	6
Aggravated Assault	7	5	4	8	13
Assault With Weapon or Causing Bodily Harm	95	94	72	75	121
Assault	94	74	65	139	186
Assault Police Officer	598	673	557	747	656
Assault to Resist Arrest	482	566	414	598	617
Dangerous operation of a motor vehicle causing bodily harm	1	4	2	2	1
Total Offences	1,282	1,420	1,116	1,572	1,600

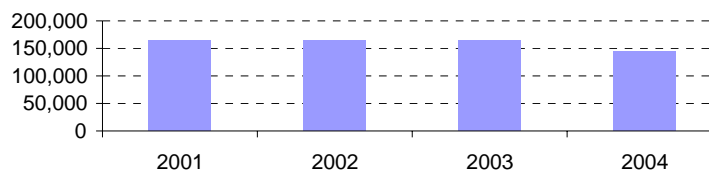
Selected Offences Against Police Officers

Year	Number of Offences
2001	1,282
2002	1,420
2003	1,116
2004	1,572
2005	1,600



Incidents as Reported to Statistics Canada*

Year	Incidents
2001	164,353
2002	164,670
2003	164,115
2004	143,746



* Total Criminal Code (C.C.), including C.C. Traffic incidents.

Value for 2005 is not available from Statistics Canada at press time.

The 2006 Annual Statistical Report will contain this information.

Criminal Code Offences Reported and Cleared - Field Command and Toronto Totals

TPS 2005 Statistical Report

	First Degree Murder	Second Degree Murder	Manslaughter	Attempted Murder	Sexual Assault +	Other Assault	Robbery	Break and Enter	Theft of Motor Vehicle**	Theft Over \$5,000	Theft Under \$5,000	Fraud	Offensive Weapons offences	Other Criminal Code	Total Criminal Code Non-Traffic	Criminal Code Traffic□	Total Criminal Code	
Central Field Command	Reported	24	6	1	64	940	12,259	2,380	7,435	3,275	747	25,881	5,476	2,992	32,475	93,955	1,852	95,807
	Cleared	9	6	1	41	816	9,601	888	1,599	551	135	6,955	3,106	2,788	22,623	49,119	1,828	50,947
	% Cleared	37.5	100.0	100.0	64.1	86.8	78.3	37.3	21.5	16.8	18.1	26.9	56.7	93.2	69.7	52.3	98.7	53.2
Area Field Command	Reported	30	16	2	105	1,030	12,828	3,227	7,651	6,773	944	23,245	7,987	3,380	31,850	99,068	2,282	101,350
	Cleared	7	16	2	61	859	9,591	1,020	1,123	515	158	7,171	4,680	3,095	20,979	49,277	2,257	51,534
	% Cleared	23.3	100.0	100.0	58.1	83.4	74.8	31.6	14.7	7.6	16.7	30.8	58.6	91.6	65.9	49.7	98.9	50.8
Unknown Patrol Area	Reported	0	0	0	3	115	250	38	48	121	25	425	1,214	230	2,318	4,787	60	4,847
	Cleared	0	0	0	2	63	173	24	43	40	18	103	608	225	2,109	3,408	58	3,466
	% Cleared	0.0	0.0	0.0	66.7	54.8	69.2	63.2	89.6	33.1	72.0	24.2	50.1	97.8	91.0	71.2	96.7	71.5
Toronto Total	Reported	54	22	3	172	2,085	25,337	5,645	15,134	10,169	1,716	49,551	14,677	6,602	66,643	197,810	4,194	202,004
	Cleared	16	22	3	104	1,738	19,365	1,932	2,765	1,106	311	14,229	8,394	6,108	45,711	101,804	4,143	105,947
	% Cleared	29.6	100.0	100.0	60.5	83.4	76.4	34.2	18.3	10.9	18.1	28.7	57.2	92.5	68.6	51.5	98.8	52.4

"+" Sexual Assaults do not include non assaultive Sexual offences.

** Includes motorcycles, snow vehicles and all attempts.

"□" Statistics do not include Criminal Code 'Fail to Remain' offences.

Criminal Code Offences Reported and Cleared - Central Field Command

TPS 2005 Statistical Report

		First Degree Murder	Second Degree Murder	Manslaughter	Attempted Murder	Sexual Assault	Other Assault	Robbery	Break and Enter	Theft of Motor Vehicle**	Theft Over \$5,000	Theft Under \$5,000	Fraud	Offensive Weapons Offences	Other Criminal Code	Total Criminal Code Non-Traffic	Criminal Code Traffic☐	Total Criminal Code
11 Division	Reported	2	0	0	1	76	913	147	618	257	51	1,503	398	239	2,480	6,685	258	6,943
	Cleared	1	0	0	1	53	706	61	140	31	7	244	177	229	1,656	3,306	253	3,559
	% Cleared	50.0	0.0	0.0	100.0	69.7	77.3	41.5	22.7	12.1	13.7	16.2	44.5	95.8	66.8	49.5	98.1	51.3
12 Division	Reported	2	0	1	15	105	1,091	231	473	406	33	1,577	357	361	2,759	7,411	240	7,651
	Cleared	1	0	1	14	84	882	73	144	41	8	615	161	341	1,990	4,355	236	4,591
	% Cleared	50.0	0.0	100.0	93.3	80.0	80.8	31.6	30.4	10.1	24.2	39.0	45.1	94.5	72.1	58.8	98.3	60.0
13 Division	Reported	1	0	0	4	105	1,217	211	589	319	45	1,531	402	268	2,479	7,171	158	7,329
	Cleared	0	0	0	3	92	994	59	109	50	8	378	144	240	1,606	3,683	156	3,839
	% Cleared	0.0	0.0	0.0	75.0	87.6	81.7	28.0	18.5	15.7	17.8	24.7	35.8	89.6	64.8	51.4	98.7	52.4
14 Division	Reported	6	2	0	13	122	2,106	355	1,211	473	120	4,421	772	501	4,550	14,652	332	14,984
	Cleared	3	2	0	11	98	1,539	118	231	53	9	766	400	468	3,037	6,735	330	7,065
	% Cleared	50.0	100.0	0.0	84.6	80.3	73.1	33.2	19.1	11.2	7.5	17.3	51.8	93.4	66.7	46.0	99.4	47.2
51 Division	Reported	7	0	0	4	115	1,486	429	857	412	101	3,591	526	487	3,897	11,912	151	12,063
	Cleared	2	0	0	3	109	1,208	159	233	43	17	709	292	456	2,974	6,205	150	6,355
	% Cleared	28.6	0.0	0.0	75.0	94.8	81.3	37.1	27.2	10.4	16.8	19.7	55.5	93.6	76.3	52.1	99.3	52.7

** Includes motorcycles, snow vehicles and all attempts.
 "☐" Statistics do not include Criminal Code 'Fail to Remain' offences.

Continued on next page

Criminal Code Offences Reported and Cleared - Central Field Command(Cont'd)

TPS 2005 Statistical Report

		First Degree Murder	Second Degree Murder	Manslaughter	Attempted Murder	Sexual Assault	Other Assault	Robbery	Break and Enter	Theft of Motor Vehicle**	Theft Over \$5,000	Theft Under \$5,000	Fraud	Offensive Weapons Offences	Other Criminal Code	Total Criminal Code Non-Traffic	Criminal Code Traffic	Total Criminal Code
52 Division	Reported	2	2	0	17	96	1,505	182	692	213	127	5,237	937	263	7,171	16,444	175	16,619
	Cleared	1	2	0	5	82	1,093	64	152	27	18	1,567	633	246	5,223	9,113	170	9,283
	% Cleared	50.0	100.0	0.0	29.4	85.4	72.6	35.2	22.0	12.7	14.2	29.9	67.6	93.5	72.8	55.4	97.1	55.9
53 Division	Reported	0	1	0	3	98	1,040	222	1,310	384	123	3,189	860	136	2,605	9,971	134	10,105
	Cleared	0	1	0	0	101	839	105	128	89	31	951	451	118	1,498	4,312	131	4,443
	% Cleared	0.0	100.0	0.0	0.0	103.1	80.7	47.3	9.8	23.2	25.2	29.8	52.4	86.8	57.5	43.2	97.8	44.0
54 Division	Reported	3	1	0	6	94	1,241	302	797	398	48	1,725	582	349	2,890	8,436	213	8,649
	Cleared	0	1	0	3	79	1,082	120	132	175	16	661	355	325	2,195	5,144	213	5,357
	% Cleared	0.0	100.0	0.0	50.0	84.0	87.2	39.7	16.6	44.0	33.3	38.3	61.0	93.1	76.0	61.0	100.0	61.9
55 Division	Reported	1	0	0	1	129	1,660	301	888	413	99	3,107	642	388	3,644	11,273	191	11,464
	Cleared	1	0	0	1	118	1,258	129	330	42	21	1,064	493	365	2,444	6,266	189	6,455
	% Cleared	100.0	0.0	0.0	100.0	91.5	75.8	42.9	37.2	10.2	21.2	34.2	76.8	94.1	67.1	55.6	99.0	56.3

** Includes motorcycles, snow vehicles and all attempts.

■ Statistics do not include Criminal Code 'Fail to Remain' offences.

Continued on next page

Criminal Code Offences Reported and Cleared - Area Field Command

TPS 2005 Statistical Report

	First Degree Murder	Second Degree Murder	Manslaughter	Attempted Murder	Sexual Assault	Other Assault	Robbery	Break and Enter	Theft of Motor Vehicle**	Theft Over \$5,000	Theft Under \$5,000	Fraud	Offensive Weapons Offences	Other Criminal Code	Total Criminal Code Non-Traffic	Criminal Code Traffic	Total Criminal Code
--	---------------------	----------------------	--------------	------------------	----------------	---------------	---------	-----------------	--------------------------	--------------------	---------------------	-------	----------------------------	---------------------	---------------------------------	-----------------------	---------------------

22 Division	Reported	1	1	1	8	84	1,411	256	1,013	716	155	3,003	962	368	3,800	11,779	351	12,130
	Cleared	1	1	1	3	83	1,101	100	179	75	17	812	538	336	2,466	5,713	350	6,063
	% Cleared	100.0	100.0	100.0	37.5	98.8	78.0	39.1	17.7	10.5	11.0	27.0	55.9	91.3	64.9	48.5	99.7	50.0

23 Division	Reported	9	2	0	13	134	1,329	355	666	754	132	2,618	717	394	3,077	10,200	238	10,438
	Cleared	1	2	0	7	109	944	101	102	58	25	884	405	366	1,951	4,955	236	5,191
	% Cleared	11.1	100.0	0.0	53.8	81.3	71.0	28.5	15.3	7.7	18.9	33.8	56.5	92.9	63.4	48.6	99.2	49.7

31 Division	Reported	6	4	0	37	206	2,446	551	886	1,060	118	2,905	1,110	759	5,022	15,110	269	15,379
	Cleared	1	4	0	20	171	1,825	201	150	59	16	808	663	704	3,421	8,043	269	8,312
	% Cleared	16.7	100.0	0.0	54.1	83.0	74.6	36.5	16.9	5.6	13.6	27.8	59.7	92.8	68.1	53.2	100.0	54.0

32 Division	Reported	3	2	0	6	111	1,385	345	1,068	935	184	3,944	1,512	332	4,165	13,992	289	14,281
	Cleared	1	2	0	4	84	1,009	129	123	83	26	1,027	813	295	2,755	6,351	282	6,633
	% Cleared	33.3	100.0	0.0	66.7	75.7	72.9	37.4	11.5	8.9	14.1	26.0	53.8	88.9	66.1	45.4	97.6	46.4

** Include motor cycle and snow vehicle and all attempts.

☒ Statistics do not include Criminal Code 'Fail to Remain' offences.

Continued on next page

Criminal Code Offences Reported and Cleared - Area Field Command(Cont'd)

TPS 2005 Statistical Report

		First Degree Murder	Second Degree Murder	Manslaughter	Attempted Murder	Sexual Assault	Other Assault	Robbery	Break and Enter	Theft of Motor Vehicle**	Theft Over \$5,000	Theft Under \$5,000	Fraud	Offensive Weapons Offences	Other Criminal Code	Total Criminal Code Non-Traffic	Criminal Code Traffic	Total Criminal Code
33 Division	Reported	3	1	0	6	89	1,072	307	700	550	110	2,310	792	290	2,604	8,834	200	9,034
	Cleared	1	1	0	3	66	880	102	61	40	28	717	476	268	1,613	4,256	194	4,450
	%Cleared	33.3	100.0	0.0	50.0	74.2	82.1	33.2	8.7	7.3	25.5	31.0	60.1	92.4	61.9	48.2	97.0	49.3
41 Division	Reported	1	5	0	7	193	2,392	498	1,344	1,044	113	3,577	1,319	655	6,537	17,685	445	18,130
	Cleared	0	5	0	6	157	1,838	160	252	93	24	1,433	930	610	4,610	10,118	442	10,560
	% Cleared	0.0	100.0	0.0	85.7	81.3	76.8	32.1	18.8	8.9	21.2	40.1	70.5	93.1	70.5	57.2	99.3	58.2
42 Division	Reported	7	1	1	28	213	2,793	915	1,974	1,714	132	4,888	1,575	582	6,645	21,468	490	21,958
	Cleared	2	1	1	18	189	1,994	227	256	107	22	1,490	855	516	4,163	9,841	484	10,325
	% Cleared	28.6	100.0	100.0	64.3	88.7	71.4	24.8	13.0	6.2	16.7	30.5	54.3	88.7	62.6	45.8	98.8	47.0

** Includes motorcycles, snow vehicles and all attempts.

■ Statistics do not include Criminal Code 'Fail to Remain' offences.

Criminal Code Traffic Charges Laid - by Division

TPS 2005 Statistical Report

Case Unit	Dangerous Driving	Drive While Disqualified	Drive While Impaired	Fail to Remain	Over 80	Refuse Breath/ Blood/ Screen	Total Charges
D11	27	13	63	22	100	20	245
D12	29	17	64	19	91	24	244
D13	21	7	42	15	47	6	138
D14	30	9	77	23	102	18	259
D51	28	3	32	31	41	10	145
D52	15	5	36	12	53	8	129
D53	15	1	34	8	38	6	102
D54	16	6	53	11	89	14	189
D55	15	5	47	18	71	10	166
Total - Central Field	196	66	448	159	632	116	1617
D22	42	12	91	30	93	17	285
D23	18	11	71	12	81	19	212
D31	25	14	83	24	87	23	256
D32	28	13	76	10	114	21	262
D33	32	7	39	14	49	7	148
D41	52	15	138	35	143	34	417
D42	71	20	144	37	142	34	448
Total - Area Field	268	92	642	162	709	155	2028
Other Units	14	4	6	12	5	1	42
TSV	76	12	135	49	324	39	635
Grand Total	554	174	1231	382	1670	311	4322

Charges Laid defined as all instances where a CIPS offence is linked to a specific person.

Release type not taken into account.

Charges Laid For Other Offences*** - by Division

Other Offences					
	Liquor Licence Act - Drunk	Liquor Licence Act - Other	Municipal By-Laws☒	Total+	Highway Traffic Act☑
11 Division	315	276	869	1,460	14,295
12 Division	127	324	299	750	11,170
13 Division	114	128	1,056	1,298	23,215
14 Division	371	628	1,162	2,161	9,359
51 Division	492	1,031	757	2,280	9,359
52 Division	430	1,152	2,859	4,441	9,244
53 Division	148	229	662	1,039	9,045
54 Division	126	186	544	856	13,749
55 Division	221	553	821	1,595	10,093
<i>Central Field</i>	2,344	4,507	9,029	15,880	109,529
22 Division	239	330	423	992	19,500
23 Division	130	301	342	773	17,634
31 Division	153	538	334	1,025	30,566
32 Division	100	190	1,971	2,261	19,561
33 Division	34	43	654	731	22,771
41 Division	122	413	751	1,286	19,189
42 Division	96	662	1,322	2,080	26,761
<i>Area Field Command</i>	874	2,477	5,797	9,148	155,982
Toronto	3,295**	7,361**	14,826	27,056**	265,511

☑ Reflects the total Highway Traffic Act charges issued by divisional personnel.

+ Excluding Highway Traffic Act.

The Total of the H.T.A. charges issued by divisional, traffic and other personnel was 369,795.

** Includes charges issued by other units.

☒ Reflects the total Bylaw charges issued by divisional personnel. The total of the Bylaw charges issued by all units was 16,400.

*** Source CIPS

Persons Charged With Criminal Code Offences and Other Federal Statutes*

TPS 2005 Statistical Report

	Murder **	Attempted Murder	Sexual Assault	Other Assault	Robbery	Break & Enter	Theft Over	Theft Under	Theft Other	Fraud	Offensive Weapons	Other Criminal Code	Criminal Code Traffic	Drug	Other Federal Statutes
--	-----------	------------------	----------------	---------------	---------	---------------	------------	-------------	-------------	-------	-------------------	---------------------	-----------------------	------	------------------------

Young Offender	Male	2	9	142	1098	848	285	66	1367	766	86	787	2509	59	601	249
	Female	0	1	3	383	89	47	6	1253	195	49	74	511	3	70	60
	Total	2	10	145	1481	937	332	72	2620	961	135	861	3020	62	671	309

Adult	Male	48	103	788	9203	939	1404	347	6443	3676	1909	2428	18932	2409	4307	861
	Female	4	5	10	1751	111	118	48	3482	887	707	254	3381	255	634	171
	Total	52	108	798	10954	1050	1522	395	9925	4563	2616	2682	22313	2664	4941	1032

Grand Total	Total	54	118	943	12435	1987	1854	467	12545	5524	2751	3543	25333	2726	5612	1341
-------------	-------	----	-----	-----	-------	------	------	-----	-------	------	------	------	-------	------	------	------

* A person can be charged with multiple offences and may be included in more than one category.

(3) Persons where gender not specified excluded.

Persons where age_at_offence less than 12 excluded.

Age Defined by CIPS : Age_at_offence field.

Young Offender define as Age between 12 -17.

Persons Charged defined as all instances where a CIPS offence is linked to a specific person.

**Includes First Degree Murder, Second Degree Murder and Manslaughter.

Persons Charged With Criminal Code Traffic Offences*

TPS 2005 Statistical Report

Offence Type		Dangerous Driving	Drive While Disqualified	Drive While Impaired	Fail to Remain	Over 80	Refuse Breath/ Blood/ Screen
Young Offender	Male	35	2	9	34	9	0
	Female	2	1	0	2	0	0
	Total	37	3	9	36	9	0
Adult	Male	468	151	1089	274	1470	285
	Female	25	3	118	19	188	25
	Total	493	154	1207	293	1658	310
Grand Total		530	157	1216	329	1667	310

* A person can be charged with multiple offences and may be included in more than one category.

(3) Persons where gender is not specified excluded.

Persons where age_at_offence less than 12 excluded.

Age obtained from CIPS : Age_at_offence field.

Young Offender define as Age between 12 -17.

Persons Charged defined as all instances where a CIPS offence is linked to a specific person.

Data Source: CIPS

Persons Charged by Case Unit for Criminal Code and Other Federal Statutes*

TPS 2005 Statistical Report

Case Unit	Murder**	Murder Attempted	Sexual Assault	Other Assault	Robbery	Break & Enter	Theft Over	Theft Under	Theft Other	Fraud	Offensive Weapons	Other Criminal Code	Criminal Code Traffic	Drug	Other Federal Statutes
D11	0	2	27	505	63	124	15	250	219	64	132	1056	154	156	110
D12	0	11	52	561	94	100	21	553	210	84	199	1173	167	238	152
D13	0	1	47	552	45	89	13	284	167	76	127	1052	83	263	132
D14	1	14	59	1065	121	198	29	778	393	158	277	2397	157	858	79
D22	0	4	46	681	120	135	28	626	365	154	176	1604	165	170	115
D23	1	7	61	684	104	81	51	820	303	115	164	1157	133	190	93
D31	0	12	101	1142	200	125	20	721	349	209	379	1809	155	382	159
D32	1	7	47	640	79	79	31	1004	406	253	160	1112	166	139	52
D33	1	2	36	571	96	48	28	666	277	138	144	868	97	129	30
D41	0	9	73	1109	154	144	37	1472	531	250	317	2053	238	260	51
D42	1	21	98	1347	247	193	42	1409	571	249	341	2476	265	271	105
D51	0	1	41	715	138	89	24	507	332	111	195	2006	78	743	26
D52	1	10	43	805	64	71	32	1551	437	241	151	1989	82	296	25
D53	0	1	34	486	62	96	25	778	207	130	94	742	69	118	12
D54	0	4	58	696	83	80	14	236	189	54	170	1185	127	211	51
D55	0	2	67	784	106	177	28	873	328	174	197	1458	106	266	34
INT	0	0	0	0	0	0	0	0	2	0	0	6	0	2	0
Other	0	0	0	29	5	1	0	6	4	10	7	49	8	19	105
SIS	0	3	2	14	15	6	9	2	66	69	136	235	11	146	8
Squads	48	7	48	48	191	17	15	7	157	196	176	806	9	740	5
TSV	0	0	0	11	0	1	6	6	13	15	2	99	456	15	1
Grand Total	54	118	940	12445	1987	1854	468	12549	5526	2750	3544	25332	2726	5612	1345

* A person can be charged with multiple offences and may be included in more than one category.

Persons age_at_offence less than 12 are excluded. Persons excluded where gender is not specified (3).

Persons Charged defined as all instances where a CIPS offence is linked to a specific person.

**Includes First Degree Murder, Second Degree Murder and Manslaughter.