



ARCHIVED - Archiving Content

Archived Content

Information identified as archived is provided for reference, research or recordkeeping purposes. It is not subject to the Government of Canada Web Standards and has not been altered or updated since it was archived. Please contact us to request a format other than those available.

ARCHIVÉE - Contenu archivé

Contenu archivé

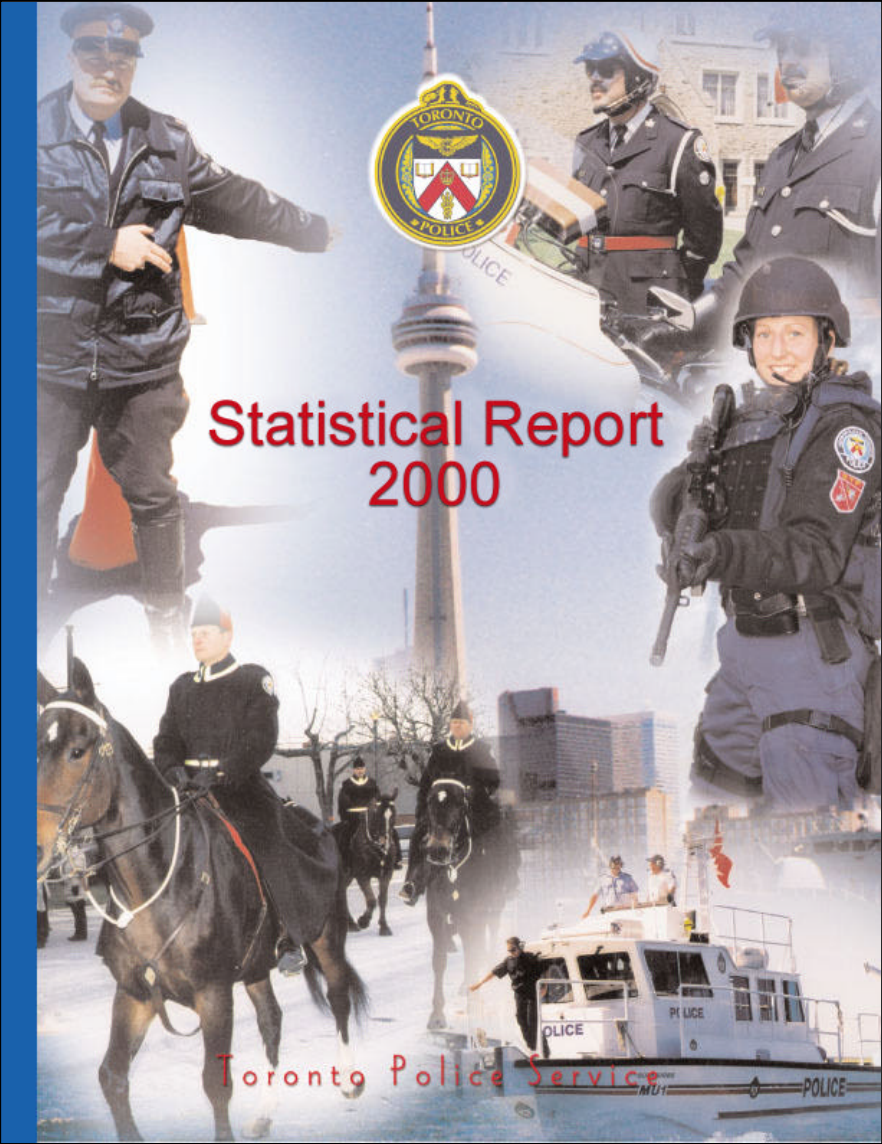
L'information dont il est indiqué qu'elle est archivée est fournie à des fins de référence, de recherche ou de tenue de documents. Elle n'est pas assujettie aux normes Web du gouvernement du Canada et elle n'a pas été modifiée ou mise à jour depuis son archivage. Pour obtenir cette information dans un autre format, veuillez communiquer avec nous.

This document is archival in nature and is intended for those who wish to consult archival documents made available from the collection of Public Safety Canada.

Some of these documents are available in only one official language. Translation, to be provided by Public Safety Canada, is available upon request.

Le présent document a une valeur archivistique et fait partie des documents d'archives rendus disponibles par Sécurité publique Canada à ceux qui souhaitent consulter ces documents issus de sa collection.

Certains de ces documents ne sont disponibles que dans une langue officielle. Sécurité publique Canada fournira une traduction sur demande.



**Statistical Report
2000**

Toronto Police Service

Introduction

The following categories of offences will assist the reader in understanding the basis for the gathering and allocation of specific statistics within this report.

Types of Offences

Violent offences are crimes involving the application and/or threat of force to a person. These include: murder, manslaughter, abduction, sexual assault, assault and robbery.

Property offences involve unlawful acts with respect to property but do not involve the use or threat of violence against an individual. These may include: theft, possession of stolen property, break and enter and fraud.

Other Criminal Code offences include Criminal Code offences that are classified as neither violent nor property offences. Examples are: prostitution, gaming and betting, mischief, offences against public order, and bail violations.

Drug offences involve offences under the Controlled Drugs and Substances Act. These offences are: possession, trafficking, importation or cultivation of various illicit, controlled and restricted drugs.

Other federal statute offences

include violations under all other federal statutes. They include; the Bankruptcy Act, Customs Act, Excise Act, and Immigration Act.

Provincial Statute offences include all violations under provincial statutes except Criminal Code traffic related statutes. Examples are: Coroner's Act, Environmental Protection Act, Mental Hospital Act and Liquor Licence Act.

A Word of Caution

This document details statistics which represent levels of activity relating to certain types of crime. It is important to note that these statistics are only valid within the specific framework in which they were gathered. They should not be compared to statistics from other agencies which may appear to report on similar issues. For example, Statistics Canada records only the most serious offence at a specific incident, whereas the Toronto Police Service records all offences at that same incident. Attempts to compare the two statistics is an apples and oranges exercise.

Overview of Statistics, 2000

- **Reported Criminal Code Offences** excluding traffic offences fell marginally by 0.8% in 2000 over the previous year.
- **Violent crime** went up by 8.2% in 2000 from 1999.
- **Property crime** dropped 7.5% over the same period.
- **Other criminal Code Offences** increased by 6.2% in 2000 from 1999.
- There were 59 homicides in 2000 compared to 47 in 1999, an increase of 25.5%. There were two young offenders charged with homicide in 2000 compared to 32 adults charged.
- Sexual assaults increased by 3.3%. 52.5% of these offences were committed against persons under 18 years of age. There were 164 young offenders charged with sexual assault in 2000 compared to 123 in 1999.
- Total non-sexual assaults increased by 11.9% in 2000 over 1999. Of these, 77% were minor in nature. 1768 young offenders were charged with assault in 2000 compared to 1723 in 1999.
- Total robberies decreased 5.9%. Robbery of banks and financial institutions decreased 32.2%, while purse snatching decreased 25.6%.
- Break and enters to houses decreased 19.3%. Entries to apartments increased 5.7%.
- There were 12,066 motor vehicles reported stolen in 2000 representing a decrease of 4.2% from 1999. Out of the 667 persons charged for stealing motor vehicles, 253 were young offenders.
- There were 67 traffic fatalities in 2000.
- There were 819 complaints against police officers in 2000, compared to 629 in 1999.
- Number of vehicles stopped by R.I.D.E. (Reduced Impaired Driving Everywhere) decreased in 2000 by 1.2% to 115,112.
- Total calls for service received at the Communications Centre increased 2.5% while the total dispatched calls for service increased 4.4% in 2000 over 1999. The Service reaches out to wider sections of the community by providing service in languages other than English through the Language Line Service. In 2000 there were 2,578 calls for service received in any one of 46 different languages.

2000 Statistical Report

Toronto Police Service



Table of Contents

<u>Introduction</u>	i - ii
Uniform Strength, Expenditures & Distribution	1
Operating Budget	1
Police Personnel by Rank and Classification	2
Police Personnel by Division and Field Command	3
Fleet Information	4
Calls for Service, Language Line Service	5
Public Complaints	6-7
Community Policing & Related Miscellaneous	8-9
General Data by Division and Field Command	10
Traffic Collisions	11-12
<u>General Crime Information</u>	
Criminal Code Offences - Highlights	13-15
Criminal Code Offences by Category	16-17
Selected Offences Against Victims by Age and Sex	18
Persons Charged by Age and Sex	19-20
Violent Crime Offences	21
Selected Offences Against Police Officers	22
Total Incidents Reported to Statistics Canada	22
<u>Criminal Code Offences Reported and Cleared</u>	
Field Command and Toronto Totals	23
By Division and Field Command	24-27
<u>Traffic and Other Offences</u>	28
<u>Persons Charged</u>	
Criminal Code Offences	29
Traffic and Other Offences	30
By Unit	31

Uniform Strength and Expenditures

	1996	1997	1998	1999	2000
Population Served	2,463,475	2,487,185	2,512,079	2,538,191	2,565,555
Uniform Strength	4,746	4,940	4,904	5,111	5,149
Uniform Strength /Population*	1/519	1/503	1/512	1/497	1/498
Actual Expenditures(Gross \$)	509,546,500	522,253,500	526,106,800	554,227,500	579,699,200+
Per Capita Cost*	206.84	209.98	209.43	218.36	225.95+

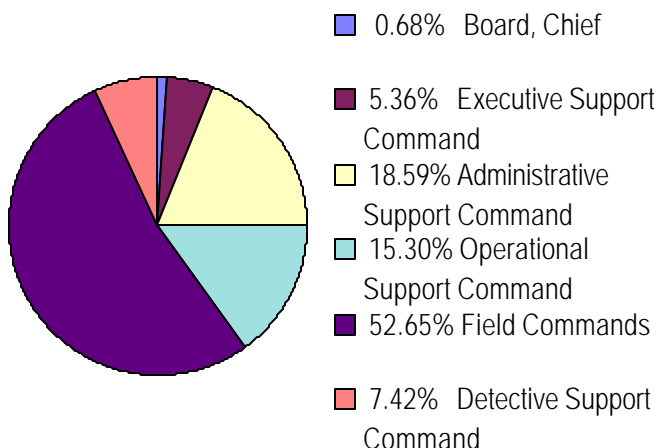
* Updated where applicable
 + Estimate (based on projected expenditures).

Gross Operating Budget

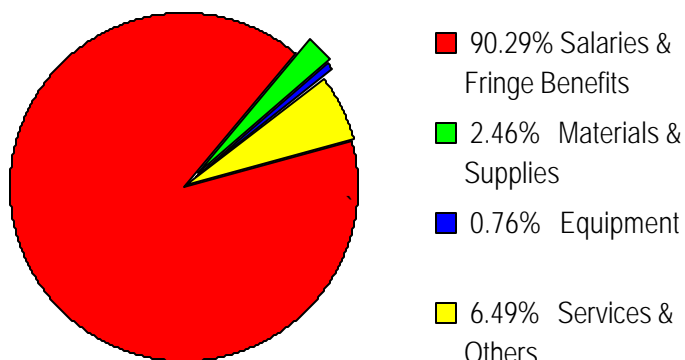
Year	Budget (\$)*	Change from Previous Year (\$)	% Change from Previous Year
1996	506,645,600	-8,289,000	-1.61
1997	522,130,600	15,485,000	3.06
1998	522,145,800	15,200	0.003
1999	537,911,400	15,765,600	3.02
2000	577,893,300	39,981,900	7.43

Operating Budget

By Appropriation



By Feature



Police Personnel by Rank and Classification*

TPS 2000 Statistical Report

	1996	1997	1998	1999	2000
Chief	1	1	1	1	1
Deputy Chief	6	6	6	5	4
Superintendent	14	14	18	21	21
Staff Inspector	37	36	33	29	26
Inspector	7	7	24	29	34
Staff Sergeant/Detective Sergeant	195	197	227	222	238
Sergeant/Detective	797	813	848	856	886
Police Constable	3,689	3,866	3,747	3,948	3,939
Total Uniform Strength	4,746	4,940	4,904	5,111	5,149
Chief Administrative Officer- Policing	1	1	1	0	1
Director	4	4	4	4	4
Parking Enforcement Officer	308	261	270	290	310
Court Officer	255	251	280	274	279
Document Server	14	11	12	16	16
Communications Operator	217	222	230	220	218
Cadets-in-Training	294	54	131	72	223
Custodial Officer	4	5	6	5	5
Other Civilians	1,190	1,226	1,228	1,241	1,219
Total Civilian Strength	2,287	2,035	2,162	2,122	2,275
Grand Total	7,033	6,975	7,066	7,233	7,424

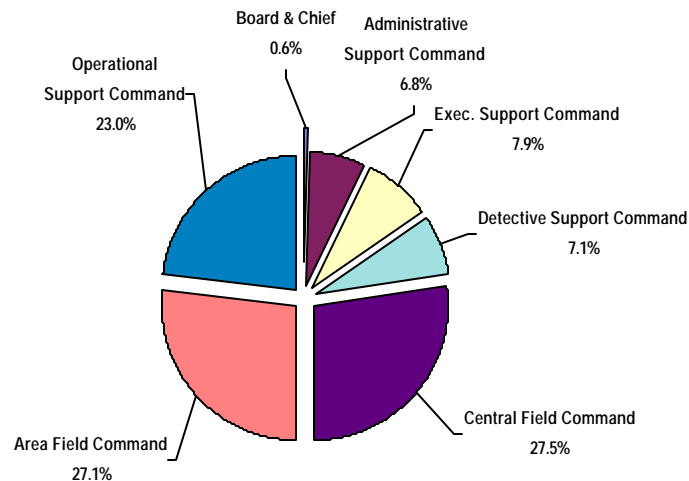
Auxiliary personnel**	321	294	271	496	302
Temporary Employee	14	22	51	74	92
School Crossing Guard	636 [☞]	686 [☞]	704 [☞]	711 [☞]	697 [☞]
Part-time Court Officer	197	191	179	154	164
Part-time Employee - other	64	51	40	56	57

* As of December 31, 2000.

** Includes other volunteers

☞ Includes spares

Distribution of Personnel by Branches of the Service



Personnel by Division And Field Command (Actual)**

	Superintendent and Above	Staff Inspector	Inspector	Staff Sergeant	Detective Sergeant	Sergeant	Detective	Police Constable	Uniform Strength	Civilian Strength	Total Strength	School Crossing Guard***
--	--------------------------	-----------------	-----------	----------------	--------------------	----------	-----------	------------------	------------------	-------------------	----------------	--------------------------

CENTRAL FIELD COMMAND HQ	1	0	0	1	2	0	4	26	34	4	38	0
11 Division	0	1	0	6	1	14	14	136	172	11	183	33
12 Division	1	0	1	6	1	15	10	140	174	11	185	44
13 Division	0	1	0	6	1	15	8	139	170	11	181	49
14 Division	1	2	0	6	3	30	30	291	363	20	383	52
51 Division	1	0	1	6	1	20	14	172	215	12	227	22
52 Division	1	0	2	7	3	28	30	306	377	26	403	16
53 Division	0	1	0	6	1	18	8	133	167	11	178	42
55 Division	1	0	1	6	2	19	19	195	243	20	263	64
Central Field Command*	6	5	5	50	15	159	137	1,538	1,915	126	2,041	322

AREA FIELD COMMAND HQ	0	0	0	1	2	1	4	33	41	4	45	0
21 Division	0	1	0	6	1	11	9	80	108	6	114	18
22 Division	0	1	0	6	1	14	11	113	146	11	157	40
23 Division	1	0	1	6	1	13	13	144	179	12	191	45
31 Division	1	1	1	6	1	18	17	199	244	13	257	39
32 Division	0	0	1	7	1	19	16	189	233	13	246	47
33 Division	0	1	0	6	1	15	11	128	162	11	173	39
41 Division	1	0	1	6	2	22	18	249	299	16	315	50
42 Division	1	0	1	7	1	20	24	252	306	21	327	55
54 Division	0	1	0	6	2	17	9	137	172	13	185	42
Area Field Command*	4	5	5	57	13	150	132	1524	1890	120	2010	375

* Includes those assigned to Command Headquarters.

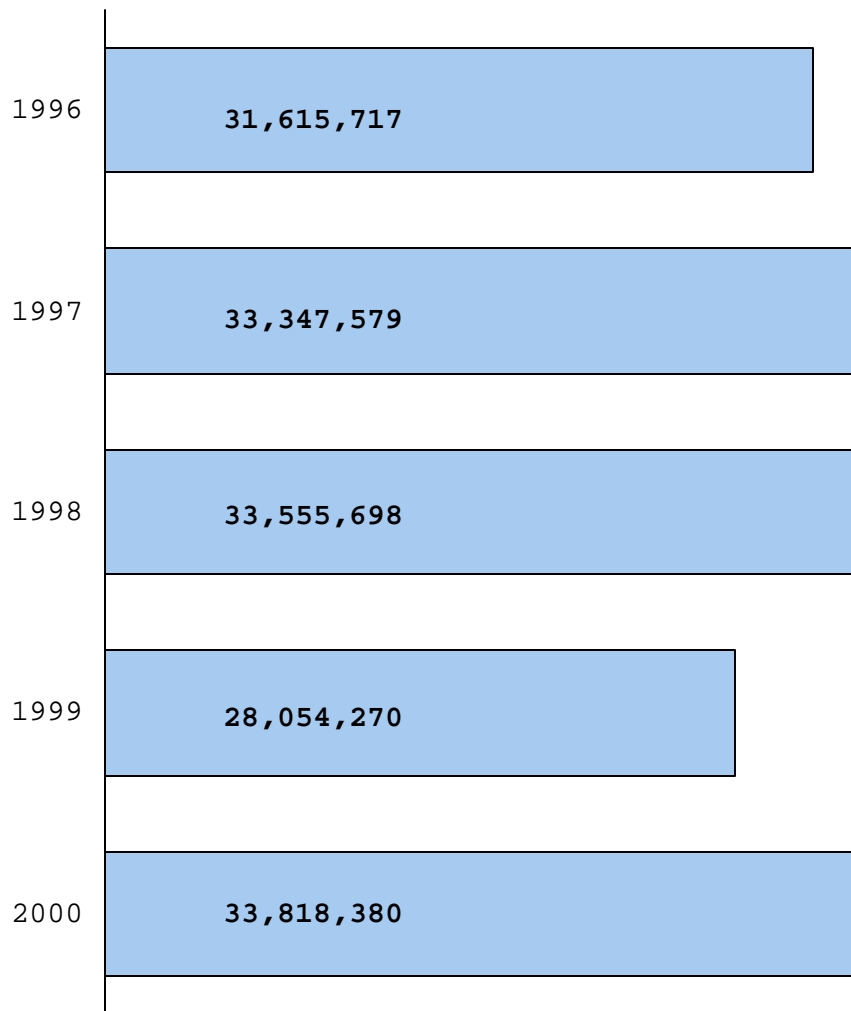
** - As of December 31, 2000

Does not include temporary and part-time civilian members.

*** - Includes spares

	1996	1997	1998	1999	2000
Cars	1,118	1,122	1,161	1,191	1,193
Motorcycles	131	129	129	130	133
Other	145	149	143	139	149
Total Vehicles	1,394	1,400	1,433	1,460	1,475
Boats	18	18	18	19	19
Horses	24	23	25	23	25

Distance Travelled by Police Vehicles (Kilometres)



Classification of Incoming Calls

TPS 2000 Statistical Report

Year	Calls Received at Communications Centre			Dispatched Calls	Other Calls**
	Emergency*	Non-Emergency□	Total		
1996	813,246	1,064,573	1,877,819	746,135	1,131,684
1997	839,366	894,134	1,733,500	851,236	882,264
1998	852,116	889,838	1,741,954	841,894	900,060
1999	900,717	876,407	1,777,124	801,746	975,378
2000	973,249	849,191	1,822,440	837,219	985,221

* 9-1-1 Emergency Calls

** Advised, transferred, or no action taken.

□ Includes Non-emergency calls, Alarms, Parking Complaints, TTC, RIDE program, and other calls which include Administration, Internal etc.

Language Line Service(Calls made in languages other than English)

Number of Calls and top 10 ranks in 1996-2000*

Language	1996	1997	1998	1999	2000
Chinese	516 (1)	523 (1)	857 (1)	877 (1)	874 (1)
Spanish	179 (2)	223 (2)	254 (2)	236 (3)	251 (2)
Vietnamese	166 (5)	213 (3)	203 (3)	145 (4)	162 (3)
Italian	171 (4)	147 (4)	171 (4)	274 (2)	145 (5)
Portuguese	175 (3)	141 (5)	140 (5)	126 (5)	151 (4)
Polish	147 (6)	110 (6)	124 (6)	102 (10)	86 (10)
French	68 (9)	77 (7)	112 (7)	114 (6)	120 (9)
Tamil	61 (10)	56	102 (8)	107 (8)	141 (6)
Korean	79 (7)	70 (8)	99 (9)	110 (7)	121 (8)
Punjabi	75 (8)	65 (9)	98 (10)	90	73
Russian	43	60 (10)	78	103 (9)	122 (7)
Farsi	30	55	66	63	32
Greek	29	44	35	37	24
Hungarian	24	20	31	58	40
Arabic	35	24	29	42	13
Somali	15	25	25	21	27
Japanese	12	16	22	12	40
Hindi	22	8	18	18	31
Urdu	7	5	17	9	12
German	8	2	15	12	2
Croatian	8	24	8	6	9
Turkish	5	6	10	9	8
Total**	1923	1998	2626	2664	2578

* Top Ten ranking shown in bracket

** Including other non-English languages

In the year 2000, calls were made in 46 languages other than English.

Public Complaints**

TPS 2000 Statistical Report

Complaints Received	1993	1994	1995	1996	1997
Physical Assault	367	284	299	219	169
Police Procedure	413	405	397	132	72
Misuse of Authority	173	196	185	399	342
Verbal Abuse	263	182	201	160	105
Total Complaints Received	1,216	1,067	1,082	910	720*
Percentage change	-4.1	-12.3	+1.4	-15.9	-20.9

* Includes 32 complaints which are not included in the four (4) general classifications in the table above. These complaints were received after proclamation of amendments to the Police Services Act on November 27, 1997. Eleven (11) of these complaints were classified as serious conduct, twenty (20) as less serious conduct and one (1) as a complaint about service.

Dispositions:

Chief's Decision

No Action Warranted	387	512	308	322	245
Criminal Charges	10	6	3	0	0
Referred to Police Complaint Board	2	4	0	0	0
Disciplinary Charge	14	3	0	7	9
Counsel or Caution	6	2	6	10	1
Frivolous, Vexatious or Bad Faith	102	140	112	127	162

Complaints Bureau Dispositions

Informally Resolved	37	26	12	2	3
Withdrawn	475	407	445	364	276
Change to Inquiry	24	51	81	184	219
Six Month Limitation	43	64	57	70	31
Third Party	11	7	13	5	8
Not Within Jurisdiction of the Act/Bureau	13	12	15	33	11

Total Dispositions	1,124	1,234	1,052	1,124	965
---------------------------	--------------	--------------	--------------	--------------	------------

** On November 27, 1997, Bill 105 (RSO) "A Act to review the Partnership between the province, municipalities and the police and to enhance community safety" was proclaimed by the Legislative Assembly. The amendments in Bill 105 revised the Police Services Act and in particular created a new system to deal with the internal discipline and public complaints.

Continued on next page

Public Complaints

TPS 2000 Statistical Report

Complaints Received	1998	1999	2000
Conduct - Less Serious	438	408	479
Conduct - Serious	158	205	252
Policy	12	9	12
Services	11	7	34
Total Complaints Received	619	629	819*

* Includes 35 complaints with no specific allegation, and 7 other complaints

Dispositions	1998	1999	2000
Frivolous	71	27	56
Informal Resolution	96	82	146
Made in Bad Faith	14	13	18
Misconduct Identified/Hearing	2	2	1
No Further Action/Final Report	141	175	180
Non Jurisdictional/Other	10	10	39+
Not Directly Affected	19	27	29
Over Six Months	44	39	32
Unit Commander's Attention/Personnel Documentation	4	5	14
Vexatious	9	0	2
Withdrawn	117	132	183
Total Dispositions	527	512	700++

+ Includes multiple jurisdiction (more than one police service), Non-jurisdictional complaints (subject officer retired or resigned) and complaints not signed by complainants.

++ Total does not include outstanding complaints that have not been adjudicated.

Category of Allegations**

	2000
Discreditable Conduct	731
Insubordination	9
Neglect of duty	294
Deceit	15
Breach of Confidence	1
Corrupt practice	10
Unlawful or Unnecessary exercise of authority	299
Damage to clothing or equipment	1
Consuming drug or alcohol in a manner prejudicial to duty	3
Total Allegations	1363→†

** Categorization is different from previous years; refer to 1999 Report for previous years' figures

→† Total incorporates complaints where there are multiple allegations.

Community Based and Miscellaneous Policing Statistics

Community Information/ Crime Prevention - Community Relations	1996	1997	1998	1999	2000
Communities involved in Neighbourhood Watch	942	956	962	742	772
Homes involved in Neighbourhood Watch	357,852	357,891	358,416	392,528	408,406
Crime Prevention Presentations	1,760	2,062	1,904	1,916	1,880
Community Relations Presentations	1,844	1,665	2,873	4,898	4,369
Substance Abuse/Safety Presentations	x	1,222	1,254	1,106	1115

x See 1996 Annual Report. Due to community based policing, new programs were added; some programs consolidated and hence no longer comparable with previous years.

Intelligence Services					
Hate/Bias Crime Occurrences	175	187	228	292	204

R.I.D.E.(Reduced Impaired Driving Every where) Year Round Statistics - Traffic Services					
Vehicles Stopped	117,144	103,695	98,426	116,517	115,112
Charges Laid	276	136	79	144	198

Alarm Program - Communications Support					
Valid Alarms	2,879	1,651	1,225	1,084	885
False Alarms	57,875	27,981	27,327	27,911	27,704

Victim Services					
Total Incidents	4,129	5,056	4,967	5,553	7,175
Telephone Assisted	3,806	4,587	4,615	5,175	6,846
On Scene	479	469	352	378	638
Domestic Related	2,792	2,794	2,461	3,440	4,807

Other Programs - Industrial Liaison					
Labour disputes attended	31	30	25	35	37
Potential dispute contacts	27	21	46	29	10

Volunteer Resources (Hours Volunteered)					
	37,914	43,869	39,282	43,893	48,236

Crime Stoppers*					
Arrests	273	190	251	388	323
Charges Laid	740	727	642	1,230	694

* Toronto statistics only

See next page

Community Relations/Community Liaison/Miscellaneous

Type of Presentation	Number of Presentations	Persons Attending
Speaking engagements	170	7,038
School Lectures	824	21,911
Lectures to Reliefs/Platoons	243	3,067
Speaking Engagements - Other	243	22,522
Community Meeting Attended	1,203	54,458
Station Tours	215	Not Available
Media Relations	135	219
Community Outreach	352	412,942
External Presentation	161	3,746
Internal Presentation/Lectures	121	1,078
External Meeting/Lectures	372	1,640
Internal Meeting	191	542
Divisional Assistance/Support Lectures	87	1,330
Conference/Seminars	11	3,739
Other Duties	41	1,226
Total	4,369	535,458

Substance Abuse/Safety Presentations

Type of Presentation	Number of Presentations
Streetproofing	250
Alcohol and Drugs	223
Law	149
Sexual Abuse	33
Abuse of elderly	107
Family violence	353
Total	1,115

Crime Prevention

Type of Presentation	Number of Presentations	Persons Attending
Neighbourhood Watch	125	5,132
Home security/High-rise security	245	7,389
Office security	259	2,036
Personal safety	618	13,928
Senior citizen safety	134	5,274
Victims of crime	214	540
Other	285	36,210
Total	1,880	70,509
Communities involved in Neighbourhood Watch		772
Homes involved in Neighbourhood Watch		408,406
Block Parents screened		277
Banks and Business premises visited		2,505
Insecure premises contacted		54
Serious break and enter call-backs		1,111
Crime prevention pamphlets distributed		95,315

General Data by Division and Field Command

TPS 2000 Statistical Report

	Estimated Population	Area (sqkm)	Projected Expenditures(\$)	Dispatched calls	Motor Vehicles		Bicycles Stolen	Value of Property (\$)*
					Stolen	Recovered		
11 Division	100,943	15.9	12,461,564	31,819	335	228	152	3,456,955
12 Division	94,405	18.5	12,362,983	36,908	442	296	82	3,381,211
13 Division	141,758	19.2	12,030,852	38,111	506	363	199	5,754,208
14 Division	150,713	15.7	26,786,782	66,519	544	383	390	8,406,428
51 Division	66,460	11.4	15,387,318	38,385	377	258	222	4,180,831
52 Division	75,130	12.4	28,521,121	68,175	560	411	589	57,964,049
53 Division	140,273	26.0	12,080,340	32,183	405	254	246	9,389,340
55 Division	118,930	17.0	17,406,284	42,155	477	350	345	5,895,866
Central Command	888,612	136.1	137,037,244	354,255	3,646	2,543	2,225	98,428,888
21 Division	59,671	16.8	7,976,420	18,320	247	203	84	2,093,825
22 Division	132,555	50.1	11,013,439	30,312	687	486	174	6,432,585
23 Division	161,315	56.6	13,599,750	40,281	1,275	886	172	10,253,542
31 Division	195,886	47.7	17,753,173	52,534	1,321	848	140	11,341,121
32 Division	202,038	62.6	16,720,620	48,900	966	559	269	14,086,476
33 Division	190,241	53.0	11,759,640	36,528	549	396	130	11,164,452
41 Division	232,178	60.1	21,106,639	63,290	1,337	1,018	218	16,571,190
42 Division	368,992	127.2	22,817,862	69,665	1,638	1,256	316	13,469,661
54 Division	134,066	20.4	12,255,956	35,512	400	288	161	3,668,782
Area Command	1,676,942	494.5	135,003,499	395,342	8,420	5,940	1,664	89,081,634
Toronto	2,565,554	630.6	272,040,743†	837,219††	12,066	8,483◆	3,889	187,510,522

* Does not include the value of motor vehicles and bicycles, but includes frauds.

†† Includes 11,947 calls handled by units other than divisions such as Highway Patrol, etc. and 75,675 Tag Agency Dispatched Events.

† Includes Division totals only.

The grand total gross expenditure of the Service was \$579,699,200.

◆ Stolen and recovered in 2000. For example 335 motor vehicles were stolen from 11 division in 2000 and out of which 228 were recovered as of 2000/12/31.

Toronto Highlights - Traffic Collisions*

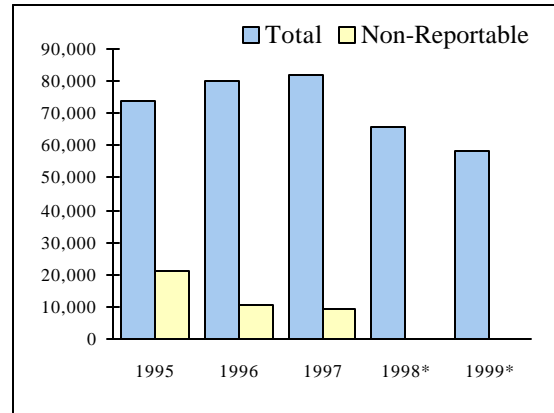
TPS 2000 Statistical Report

Source for all figures: Toronto Traffic Data Centre and Safety Bureau

Total Collisions (Includes Non-Reportable Collisions)

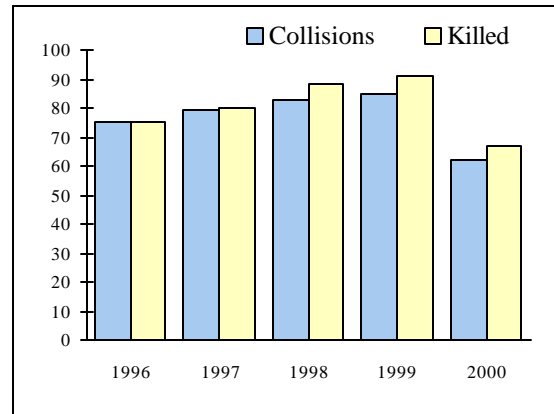
Year	Total	% Change	Non-Reportable
1995	74,137	-1.0	20,839
1996	79,992	7.9	10,547
1997	81,692	2.1	9,064
1998*	65,765	-19.5	n/a
1999*	58,450	-11.1	n/a

*figure does not include Non-Reportable collisions.



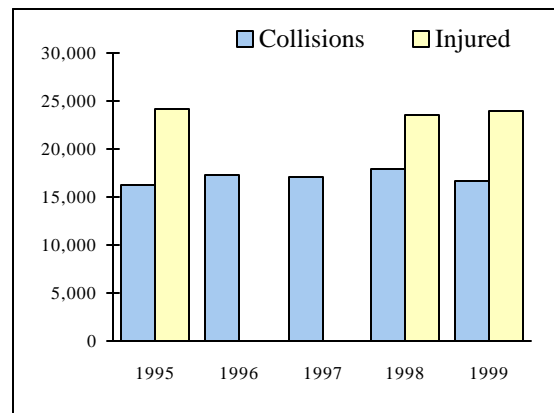
Fatal Collisions and Persons Killed

Year	Collisions	% Change	Killed
1996	75	10.1	75
1997	79	5.3	80
1998	83	5.1	88
1999	85	2.4	91
2000	62	-27.1	67



Injury Collisions and Persons Injured

Year	Collisions	% Change	Injured
1995	16,247	+16.9	24,255
1996	17,256	6.2	n/a
1997	17,091	-1.0	n/a
1998	17,979	5.2	23,455
1999	16,662	-7.3	23,895

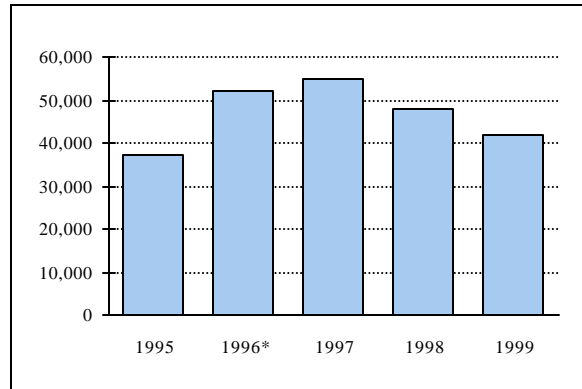


Due to technical reasons complete figures are not available.

General Note: Some 2000 figures, were not available at press time.

Property Damage Collisions

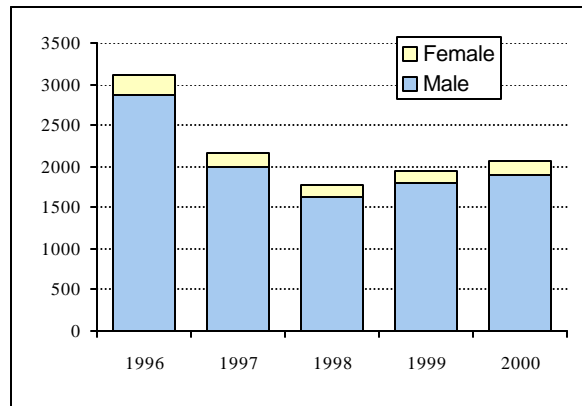
Year	Collisions	% Change
1995	36,982	-7.0
1996*	52,097	40.9
1997	54,787	5.2
1998	47,734	-12.9
1999	41,703	-12.6



* The sharp increase from 1995 is the result of the change in the method of accident reporting.
Source: Toronto Traffic Data Centre and Safety Bureau

Drinking and Driving Statistics*

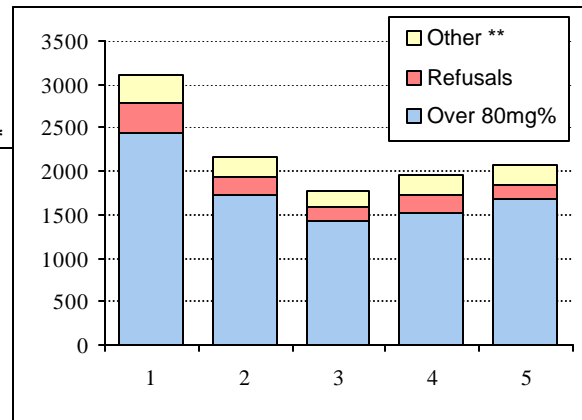
Year	Total Tested	Male	Female
1996	3,113	2873	240
1997	2,161	1999	162
1998	1,776	1629	147
1999	1,952	1788	164
2000	2,078	1901	177



* These statistics represent Breath Alcohol testing done within Toronto by the Toronto Police Service

Drinking and Driving Statistics

Year	Total Tested	Over 80mg%	Refusals	Other **
1996	3,113	2449	329	335
1997	2,161	1737	196	228
1998	1,776	1422	159	195
1999	1,952	1523	199	230
2000	2,078	1691	154	233



** Includes individuals stopped, who were under the legal limit, or where no charges were laid

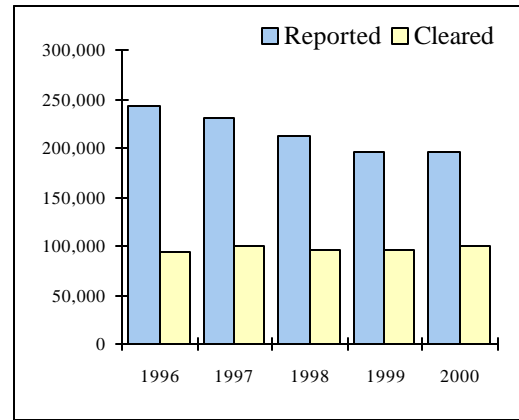
General Note: Some 2000 figures were not available at press time.

Toronto Highlights - Criminal Code Offences

TPS 2000 Statistical Report

Total Criminal Code Offences*

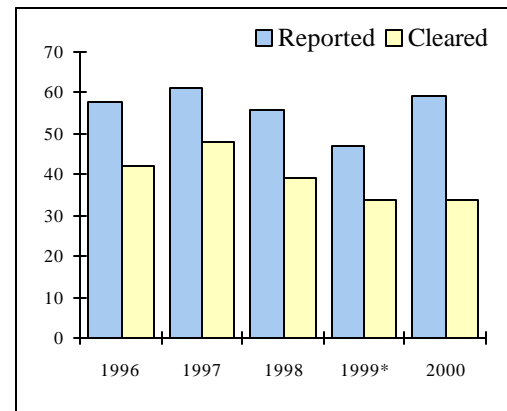
Year	Reported	% Change	Rate per 100,000 of Population	Cleared	% Cleared
1996	243,872	-3.8	9,899.5	93,256	38.2
1997	230,993	-5.3	9,287.3	99,142	42.9
1998	211,297	-8.5	8,411.2	96,173	45.5
1999	196,880	-6.8	7,756.7	95,237	48.4
2000	195,360	-0.8	7,614.7	100,367	51.4



*Excluding Criminal Code traffic offences. Statistical Reports published prior to 1997 included Criminal Code traffic offences. Crime rates are updated based on updated population.

Homicides

Year	Reported	% Change	Rate per 100,000 of Population	Cleared	% Cleared
1996	58	-1.7	2.4	42	73.7
1997	61	5.2	2.5	48	78.7
1998	56	-8.2	2.2	39	69.6
1999*	47	-16.1	1.9	34	72.3
2000	59	25.5	2.3	34	57.6



*Updated

Robberies (Financial Institutions only)

Year	Reported	% Change	Rate per 100,000 of Population	Cleared	% Cleared
1996	454	+8.6	18.4	294	64.8
1997	377	-17.0	15.2	331	87.8
1998	387	+2.7	15.4	191	49.4
1999	304	-21.4	12.0	330	108.6
2000	206	-32.2	8.0	157	76.2

