



ARCHIVED - Archiving Content

Archived Content

Information identified as archived is provided for reference, research or recordkeeping purposes. It is not subject to the Government of Canada Web Standards and has not been altered or updated since it was archived. Please contact us to request a format other than those available.

ARCHIVÉE - Contenu archivé

Contenu archivé

L'information dont il est indiqué qu'elle est archivée est fournie à des fins de référence, de recherche ou de tenue de documents. Elle n'est pas assujettie aux normes Web du gouvernement du Canada et elle n'a pas été modifiée ou mise à jour depuis son archivage. Pour obtenir cette information dans un autre format, veuillez communiquer avec nous.

This document is archival in nature and is intended for those who wish to consult archival documents made available from the collection of Public Safety Canada.

Some of these documents are available in only one official language. Translation, to be provided by Public Safety Canada, is available upon request.

Le présent document a une valeur archivistique et fait partie des documents d'archives rendus disponibles par Sécurité publique Canada à ceux qui souhaitent consulter ces documents issus de sa collection.

Certains de ces documents ne sont disponibles que dans une langue officielle. Sécurité publique Canada fournira une traduction sur demande.

Toronto Police Service



1998 STATISTICAL REPORT

INTRODUCTION

The Toronto Police Service publishes crime statistics based upon the number of reported offences whereas Statistics Canada publishes crime statistics based on reported incidents of crime. In incident based statistics, more than one offence may be involved in one incident and only the most serious offence is reported; whereas in offence based statistics, all offences in an incident are reported. So care should be taken when comparing statistics published by the two agencies.

Types of Offences

Violent offences are crimes involving the application or threat of application of force to a person. These include homicide, homicide related offence, abduction, sexual assault, sexual offence, non-sexual assault and robbery.

Property offences involve unlawful acts with respect to property but do not involve the use or threat of violence against an individual. These may include theft, possession of stolen property, break and enter and fraud.

Other Criminal Code offences include the remaining non-traffic *Criminal Code* offences that are classified as neither violent nor property offences. Examples are prostitution, gaming and betting, mischief, offences against public order, bail violations.

Drug offences involve offences under the federal Food and Drug Act and the Narcotic Control Act. These offences comprise

possession, trafficking, importation or cultivation of various illicit, controlled and restricted drugs.

Other federal statute offences include violations under all other federal statutes. They may include Bankruptcy Act, Customs Act, Excise Act, Immigration Act.

Provincial Statute offences include all violations under provincial statutes excepting traffic related statutes. Examples are Coroner's Act, Environmental Protection Act, Mental Hospital Act and Liquor Licence Act. The majority of these offences come under Liquor Licence Act.

General Information

Due to system change, 'Fail to remain' violations, which form a major portion of Criminal Code traffic offences, are not available for publishing. As a result, care should be taken when comparing the total Criminal Code offences across years. It is recommended that Criminal Code offences *excluding traffic offences* may be taken for analysing crime trends.

Offences published in a particular year include offences reported to police or became known to police during the year. However, offences occurred in the past can be reported in a future year. A typical example is the sexual assault category. Similarly, concluded offences include offences committed during previous years.

Overview of Statistics, 1998

- **Reported Criminal Code Offences excluding traffic offences** fell by 8.5% in 1998 over the previous year.
- **Violent crime** went down by 2.1% in 1998 from 1997.
- **Property crime** dropped 13.1.0% over the same period.
- **Other criminal Code Offences** decreased 2.3% in 1998 from 1997.
- There were 53 homicides in 1998 compared to 61 in 1997, a decrease of 13.1%. There were two (2) young offenders charged with homicide in 1998 compared to 31 adults charged.
- Sexual assaults decreased 9.7%. About 48.0% of these offences were committed against persons under 18 years of age. There were 122 young offenders charged for the crime in 1998 compared to 141 in 1997.
- Total non-sexual assaults decreased marginally by 0.2% in 1998 over 1997. Minor assaults which is about 77.0% of the crime increased 0.8% while major assaults in the category decreased 3.4%. There were 1624 young offenders charged for the crime in 1998 compared to 1625 in 1997.
- Total robbery decreased 5.3%; robbery to banks and financial institutions increased 3.4% while purse snatching decreased 15.3%.
- Break and enters to houses decreased 11.0%; entries to apartments dropped 10.7%.
- There were 12,972 motor vehicles reported stolen in 1998, representing a decrease of 10.7% from 1997. Out of 636 persons charged for stealing motor vehicles, 244 were young offenders.
- On the Metro roads: There were 80 fatal collisions and 86 people were killed. Due to incomplete data input at press time, the 1998 traffic accident statistics were not available for publication. The 1999 annual report will have all collision statistics for 1998 published.
- There were 617 complaints lodged against police officers in 1998, compared to 720 in 1997.
- Number of vehicles stopped by R.I.D.E. (Reduced Impaired Driving Everywhere) decreased in 1998 by 5.1% to 98,426. There was no traffic fatality this year in Toronto during festive season as a result of impaired driving.
- Total calls for service received at the Communications Centre increased 0.5% while the total dispatched calls for service decreased 1.1% in 1998 over 1997. The Service reaches out to wider sections of the community by providing service in languages other than English through the AT&T Language Line Service. In 1998 there were 2,626 calls for service received in 51 different languages.

Table of Contents

Introduction	i - ii
Uniform Strength, Expenditures & Distribution	1
Budget Information	1
Police Personnel by Rank and Classification	2
Police Personnel by Division and Field Command	3
Fleet Information	4
Calls for Service, AT&T Language Line Service	5
Public Complaints	6-7
Community policing & Miscellaneous Information	8-9
General Data by Division and Field Command	10
Traffic Accidents	11-12
<u>General Crime Information</u>	
Criminal Code Offences - Highlights	13-15
Criminal Code Offences by Category	16-17
Selected Offences Against Victims by Age and Sex	18
Persons Charged by Age and Sex	19-20
Violent Crime Statistics	21
Selected Offences Against Police Officers	22
Total Incidents Reported to Statistics Canada	22
<u>Criminal Code Offences Reported and Cleared</u>	
Field Command and Metro Totals	23
By Division and Field Command	24-28
<u>Traffic and Other Offences</u>	29
<u>Persons Charged</u>	
Criminal Code Offences	30
Traffic and Other Offences	31
By Unit of Officer	32

Uniform Strength and Expenditures

TPS 1998 Statistical Report

	1994	1995	1996	1997	1998
Population Served*	2,345,572	2,365,412	2,385,421	2,405,599	2,425,947
Uniform Strength	5,287	5,059	4,746	4,940	4,904
Uniform Strength /Population	1/444	1/468	1/503	1/487	1/495
Actual Expenditures(Gross)**	513,851,100	513,611,900	509,546,500	522,253,500	526,133,400+
Per Capita Cost	219.07	217.13	213.61	217.10	216.88+

* Estimates generated for the last 5 years, based on the annual rate of population change between 1986 & 1996 census.
Revised figures from Statistics Canada, available later this year, will be published next year.

** Actual Expenditure(Net) for 1998 was \$510,430,300

+ Estimate (based on projected expenditures).

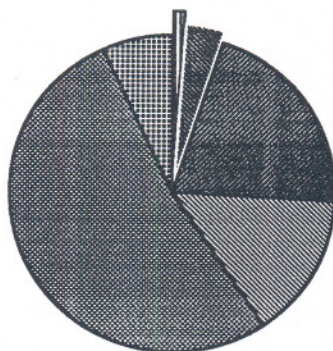
Gross Operating Budget

Year	Budget (\$)*	Change from Previous Year (\$)	% Change from Previous Year
1994	517,117,100	-37,484,000	-6.76
1995	514,934,600	-2,182,500	-0.42
1996	506,645,600	-8,289,000	-1.61
1997	522,130,600	15,485,000	3.06
1998	522,145,800	15,200	0.003

* Net Operating Budget was \$499,841,100.00 for 1994, \$503,541,000.00 for 1995, \$493,841,000 for 1996 and \$508,849,000 for 1997, 510,766,400 for 1998.

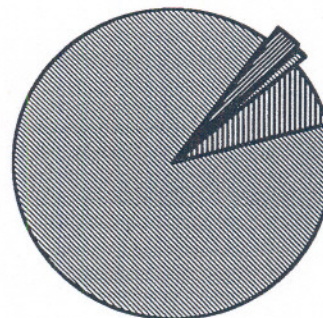
Operating Budget

By Appropriation



- 0.53% Board, Chief
- 4.24% Executive Support Command
- 20.84% Administrative Support Command
- 14.87% Operational Support Command
- 52.61% Field Commands
- 6.91% Detective Support Command

By Feature



- 90.10% Salaries & Fringe Benefits
- 2.42% Materials & Supplies
- 0.74% Equipment
- 6.74% Service & Others

Police Personnel by Rank and Classification*

TPS 1998 Statistical Report

	1994	1995	1996	1997	1998
Chief	1	1	1	1	1
Deputy Chief	3	6	6	6	6
Staff Superintendent	6	0	0	0	0
Superintendent	17	6	14	14	18
Staff Inspector	51	42	37	36	33
Inspector	24	12	7	7	24
Staff Sergeant/Detective Sergeant	257	237	195	197	227
Sergeant/Detective	916	863	797	813	848
Police Constable	4,012	3,892	3,689	3,866	3,747
Total Uniform Strength	5,287	5,059	4,746	4,940	4,904
Chief Administrative Officer- Policing	1	1	1	1	1
Director	6	6	4	4	4
Parking Enforcement Officer	257	290	308	261	270
Court Officer	229	246	255	251	280
Summons Server	14	15	14	11	12
Communications Operator	236	241	217	222	230
Cadets-in-Training	0	93	294	54	131
Custodial Officer	5	5	4	5	6
Other Civilians	1,275	1,226	1,190	1,226	1,228
Total Civilian Strength	2,023	2,123	2,287	2,035	2,162
Grand Total	7,310	7,182	7,033	6,975	7,066

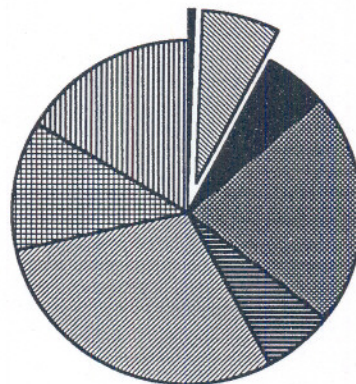
Auxiliary members**	394	340	321	294	271
Temporary Employee	73	35	14	22	51
School Crossing Guard	533	676 ^{ESP}	636 ^{ESP}	686 ^{ESP}	704 ^{ESP}
Part-time Court Officer	151	198	197	191	179
Part-time Employee - other	72	66	64	51	40

* As of December 31.

** Includes other volunteers

^{ESP} Includes spares

Distribution of Personnel by Branches of the Force



- 0.50% Board & Chief
- ▨ 7.2% Administrative Support Command
- 7.3% Exec. Support Command
- ▨ 22.3% Operational Support Command
- 6.9% Detective Support Command
- ▨ 28.1% Central Field Command
- ▨ 11.7% East Field Command
- ▨ 16.0% North-West Field Command

Personnel by Division And Field Command (Actual)

	Superintendent and Above	Staff Inspector	Inspector	Staff Sergeant	Detective Sergeant	Sergeant	Detective	Police Constable	Uniform Strength	Civilian Strength	Total Strength	School Crossing Guard ^{SP}
11 Division	0	1	0	6	2	20	8	133	170	9	179	28
12 Division	0	1	2	6	1	15	8	131	164	8	172	42
13 Division	0	1	0	6	1	14	7	139	168	10	178	54
14 Division	1	1	1	5	3	30	27	283	351	20	371	56
51 Division	0	1	1	5	1	18	16	164	206	11	217	23
52 Division	1	2	0	7	3	28	29	301	371	24	395	19
53 Division	0	1	0	6	1	15	8	139	170	10	180	50
55 Division	1	1	0	6	2	20	18	191	239	18	257	61
Central Command*	4	9	4	47	16	161	125	1506	1,872	114	1,986	333
21 Division	0	1	0	5	1	11	8	79	105	4	109	21
22 Division	0	1	0	6	1	14	11	113	146	9	155	43
23 Division	0	1	1	6	1	13	11	150	183	9	192	48
31 Division	1	1	0	6	1	15	15	195	234	12	246	37
32 Division	1	1	0	6	1	18	16	183	226	10	236	51
33 Division	0	1	0	6	1	14	11	129	162	9	171	39
North West Command*	3	6	1	35	8	85	74	868	1,080	55	1,135	239
41 Division	1	1	0	6	2	21	18	240	289	14	303	53
42 Division	1	1	1	5	3	20	20	256	307	20	327	38
54 Division	0	1	0	6	1	12	12	132	164	10	174	39
East Command*	3	3	1	18	7	53	53	642	780	46	826	130

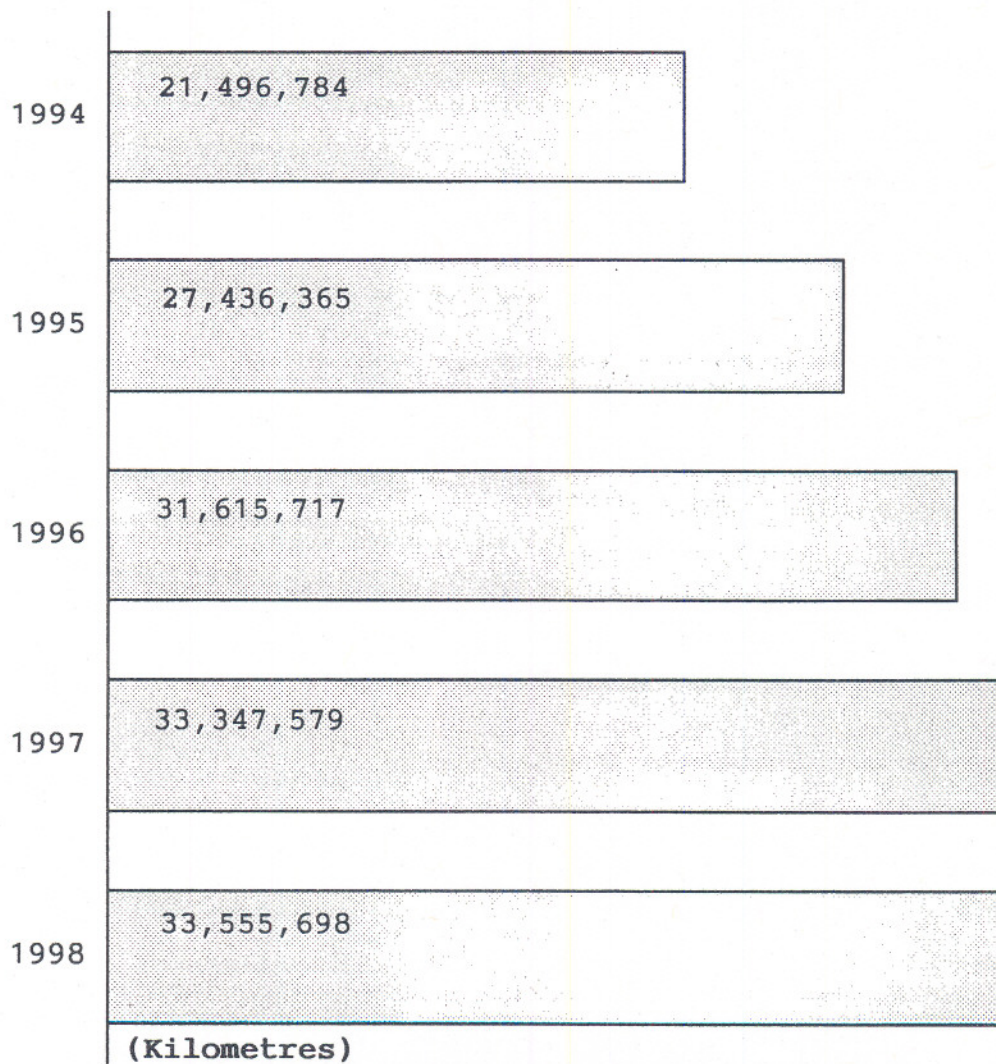
* Includes those assigned to Command Headquarters.

As of December 31, 1998

^{SP} Includes spares

	1994	1995	1996	1997	1998
Cars	1,210	1,128	1,118	1,122	1,161
Motorcycles	135	133	131	129	129
Other	144	142	145	149	143
Total Vehicles	1,489	1,403	1,394	1,400	1,433
Boats	18	18	18	18	18
Horses	26	25	24	23	25

Distance Travelled by Police Vehicles



Classification of Incoming Calls

TPS 1998 Statistical Report

Year	Calls Received at Communications Centre			Dispatched	Resource Centre Calls	Other Calls**
	Emergency*	Non-Emergency□	Total	Calls		
1994	1,138,233	1,184,690	2,322,923	796,610	27,939	1,498,374
1995	822,713	1,127,382	1,950,095	715,768	0	1,234,327
1996	813,246	1,064,573	1,877,819	746,135	0	1,131,684
1997	839,366	894,134	1,733,500	851,236	0	882,264
1998	852,116	889,838	1,741,954	841,894	0	900,060

* 9-1-1 Emergency Calls

** Advised, transferred, or no action taken.

□ Includes Non-emergency calls, Alarms, TTC, RIDE program, and other calls which may include Administration, Internal etc.

Note: Resource Centre calls no longer exist from 1995.

AT&T Language Line Service (Calls made in languages other than English)

Number of Calls and top 10 ranks in 1995-1998*

Language	1995	1996	1997	1998
Chinese	501 (1)	529 (1)	523 (1)	857 (1)
Spanish	295 (2)	193 (3)	223 (2)	254 (2)
Vietnamese	175 (4)	171 (5)	213 (3)	203 (3)
Italian	273 (3)	177 (4)	147 (4)	171 (4)
Portuguese	174 (5)	196 (2)	141 (5)	140 (5)
Polish	169 (6)	143 (6)	110 (6)	124 (6)
French	95 (8)	68 (9)	77 (7)	112 (7)
Tamil	24	68 (10)	56	102 (8)
Korean	100 (7)	78 (7)	70 (8)	99 (9)
Punjabi	74 (10)	74 (8)	65 (9)	98 (10)
Russian	60	43	60 (10)	78
Farsi	37	30	55	66
Greek	83 (9)	29	44	35
Hungarian	10	24	20	31
Arabic	49	35	24	29
Somali	25	15	25	25
Japanese	13	12	16	22
Hindi	23	22	8	18
Urdu	9	7	5	17
German	7	8	2	15
Croatian	9	8	24	12
Turkish	12	5	6	10

*Ranking shown in bracket

Other languages used in 1998: Albanian, Ukrainian, Romanian, Serbo/Croatian, Czech, Samaon, Tagalog, Thai, Cambodian, Amharic, Burmese, Dutch, Hebrew, Laotian, Bengali, Pashto, Dari, Estonian, Finnish, Shanghai, Sinhalese, Yoruba, Akan, Bulgarian, Hakka, Indonesian, Slovak, Tigrinyan, Toishanese.

In 1998 a total of 2626 calls were made in 51 different languages.

Public Complaints**

TPS 1998 Statistical Report

Complaints Received	1993	1994	1995	1996	1997
Physical Assault	367	284	299	219	169
Police Procedure	413	405	397	132	72
Misuse of Authority	173	196	185	399	342
Verbal Abuse	263	182	201	160	105
Total Complaints Received	1,216	1,067	1,082	910	720*
Percentage change	-4.1	-12.3	+1.4	-15.9	-20.9

* Includes 32 complaints which are not included in the four (4) general classifications in the table above. These complaints were received after proclamation of amendments to the Police Services Act on November 27, 1997. Eleven (11) of these complaints were classified as serious conduct, twenty (20) as less serious conduct and one (1) as a complaint about service.

Dispositions:

Chief's Decision

No Action Warranted	387	512	308	322	245
Criminal Charges	10	6	3	0	0
Referred to Police Complaint Board	2	4	0	0	0
Disciplinary Charge	14	3	0	7	9
Counsel or Caution	6	2	6	10	1
Frivolous, Vexatious or Bad Faith	102	140	112	127	162

Complaints Bureau Dispositions

Informally Resolved	37	26	12	2	3
Withdrawn	475	407	445	364	276
Change to Inquiry	24	51	81	184	219
Six Month Limitation	43	64	57	70	31
Third Party	11	7	13	5	8
Not Within Jurisdiction of the Act/Bureau	13	12	15	33	11

Total Dispositions	1,124	1,234	1,052	1,124	965
---------------------------	--------------	--------------	--------------	--------------	------------

** On November 27, 1997, Bill 105 (RSO) "An Act to review the Partnership between the province, municipalities and the police and to enhance community safety" was proclaimed by the Legislative Assembly. The amendments in Bill 105 revised the Police Services Act and in particular created a new system to deal with the internal discipline and public complaints.

Public Complaints**

TPS 1998 Statistical Report

Complaints Received	1998
Conduct - Less Serious	435
Conduct - Serious	159
Policy	12
Services	11
Total Complaints Received	617

Dispositions	1998
Frivolous	71
Informal Resolution	96
Made in Bad Faith	14
Misconduct Identified	2
No Further Action	141
Non Jurisdictional	10
Not Directly Affected	19
Over Six Months	44
Unit Commander's Attention	4
Vexatious	9
Withdrawn	117
Total Dispositions	527

Dispositions	1998
Abuse(Racial, Verbal and Sexual)	179
Procedure	202
Use of Authority	195
Use of Force	117
Total Allegations	693

** Due to Bill 105 (RSO) "An Act to review the Partnership between the province, municipalities and the police and to enhance community safety", the format for compiling statistics in 1998 differs from previous years.

Community Based and Miscellaneous Policing Statistics

Community Information/ Crime Prevention - Community Relations	1994	1995	1996	1997	1998
Communities involved in Neighbourhood Watch	881	997	942	956	962
Homes involved in Neighbourhood Watch	354,169	372,770	357,852	357,891	358,416
Crime Prevention Presentations	1,950	1,497	1,760	2,062	1904
Community Relations Presentations	2,583	2,190	1,844	1,665	2873
Substance Abuse/Safety Presentations*	16,912	7,250	X	1,222	1254

* Due to program changes statistics for 1994 & 1995 cannot be compared with other years.

Intelligence Services	1994	1995	1996	1997	1998
Hate/Bias Crime Occurrences	249	302	175	187	228

R.I.D.E.(Reduced Impaired Driving Every where) Year Round Statistics - Traffic Services	1994	1995	1996	1997	1998
Vehicles Stopped	191,287	136,218	117,144	103,695	98,426
Charges Laid(Related to impaired driving only)	259	302	276	133	79

Alarm Program - Communications Support	1994	1995	1996	1997	1998
Valid Alarms	3,166	3,504	2,879	1,651	1,225
False Alarms	60,438	69,014	57,875	27,981	27,327

Victim Services	1994	1995	1996	1997	1998
Total Incidents	4,351	4,282	4,129	5,056	4,967
Telephone Assisted	3,824	3,751	3,806	4,587	4,615
On Scene	527	531	479	469	352
Domestic Related	2,492	2,440	2,792	2,794	2,461

Other Programs - Industrial Liaison	1994	1995	1996	1997	1998
Labour disputes attended	30	32	31	30	25
Potential dispute contacts	96	94	27	21	46

Volunteer Resources (Hours Volunteered)	62,966	43,706	37,914	43,869	39,282
--	---------------	---------------	---------------	---------------	---------------

Crime Stoppers*	1994	1995	1996	1997	1998
Arrests	190	229	273	190	251
Charges Laid	955	702	740	727	642

* Toronto statistics only

X See 1996 Annual Report. Due to community based policing, new programs were added; some programs consolidated and hence no longer comparable with previous years.

See next page

COMMUNITY RELATIONS

Type of Presentation	Number of Presentations	Persons Attending
Speaking engagements	286	10,952
School Lectures	851	29,211
Lectures to Reliefs/Platoons	286	5,695
Speaking Engagements - Other	356	21,621
Training Sessions	13	585
Civilian Police College	22	170
Museum tours	115	3,300
Special Projects	87	
Displays/Shows/Trade shows	10	150,000
Community Meeting Attended	362	5,190
Station Tours	485	3,300
Total	2,873	230,024

Substance Abuse/Safety Presentations	Count
Streetproofing	386
Alcohol and Drugs	427
Law	282
Sexual Abuse	34
Abuse of elderly	76
Family violence	49
Total	1,254

CRIME PREVENTION

Type of Presentation	Number of Presentations	Persons Attending
Neighbourhood Watch	148	7,002
Home security/High-rise security	259	5,028
Office security	447	5,194
Personal safety	267	9,929
Senior citizen safety	184	6,858
Victims of crime	391	1,231
Other	208	18,480
Total	1,904	53,722

Communities involved in Neighbourhood Watch	962
Homes involved in Neighbourhood Watch	358,416
Block Parents screened	264
Banks and Business premises visited	1,697
Insecure premises contacted	48
Serious break and enter call-backs	984
Crime prevention pamphlets distributed	317,213

General Data by Division and Field Command

TPS 1998 Statistical Report

	Estimated Population	Area (sqkm)	Projected Expenditures(\$)	Dispatched calls	Motor Vehicles		Bicycles Stolen	Value of Property (\$)*
					Stolen	Recovered		
11 Division	95,451	15.9	11,968,400	33,626	416	278	285	3,888,291
12 Division	89,268	18.5	11,811,900	33,180	416	279	167	4,208,683
13 Division	134,044	19.2	12,124,200	42,278	502	330	324	7,237,625
14 Division	142,512	15.7	25,780,600	65,933	736	532	608	7,725,188
51 Division	62,844	11.4	14,555,400	38,717	396	297	368	5,831,565
52 Division	71,042	12.4	28,026,900	69,756	628	457	682	38,867,011
53 Division	132,640	26.0	12,149,000	31,452	475	282	379	9,464,021
55 Division	112,459	17.0	17,700,500	41,491	648	464	589	5,075,990
Central Command	840,260	136.1	134,116,900	356,433	4,217	2,919	3,402	82,298,374
21 Division	56,424	16.8	7,606,000	18,988	297	197	167	4,240,713
22 Division	125,342	50.1	10,772,900	29,920	772	518	318	5,946,105
23 Division	152,537	56.6	13,207,400	38,874	1,223	830	332	7,758,358
31 Division	185,226	47.7	17,070,500	51,877	1,259	779	275	10,157,301
32 Division	191,043	62.6	15,851,400	49,685	1,015	591	275	14,553,517
33 Division	179,889	53.0	11,791,400	37,399	722	512	199	9,368,738
North West Command	890,461	286.8	76,299,600	226,743	5,288	3,427	1,566	52,024,732
41 Division	219,544	60.1	21,286,000	62,503	1,340	1,026	283	17,422,543
42 Division	348,913	127.2	22,611,300	71,096	1,598	1,212	737	18,016,872
54 Division	126,771	20.4	11,975,700	36,191	529	388	213	3,703,057
East Command	695,228	207.7	55,873,000	169,790	3,467	2,626	1,233	39,142,472
Toronto	2,425,949	630.6	266,289,500†	841,894††	12,972	8,972◆	6,201	173,465,578

* Does not include the value of motor vehicles and bicycles, but includes frauds.

†† Includes 13,474 calls handled by units other than divisions such as Highway Patrol, etc. and 75,454 Tags Dispatched Events.

† Includes Division totals only.

The grand total gross expenditure of the Service was \$526,133,400.00.

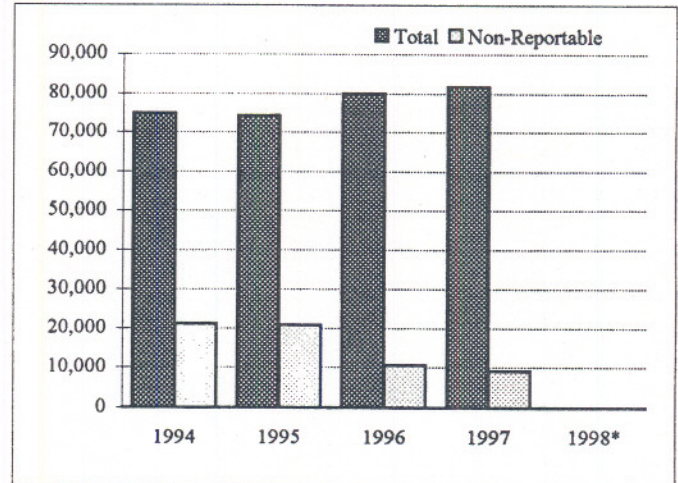
◆ Recovered in 1998 out of those stolen in 1998. For example 416 motor vehicles were stolen from 11 division in 1998 and out of which 278 were recovered as of 98/12/31.

Vehicles stolen in previous years and recovered in 1998 are not included.

Recovery statistics *do not* represent the recovery workload of divisions.

Total Accidents (Includes Non-Reportable Accidents)

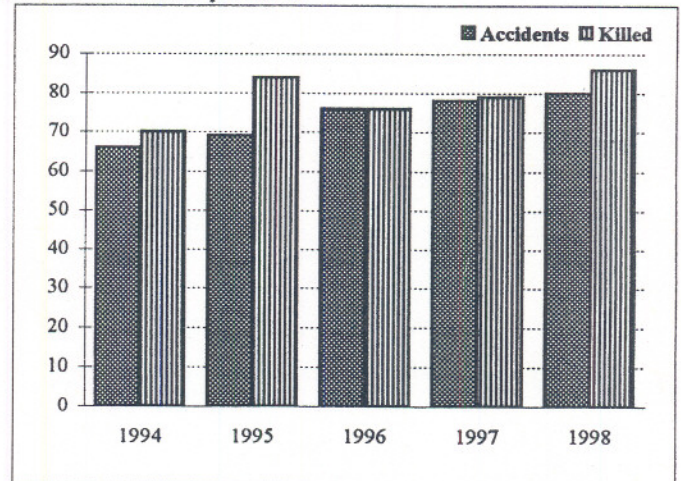
Year	Total	% Change	Non-Reportable
1994	74,865	+12.6	21,124
1995	74,137	-1.0	20,839
1996	79,992	+7.9	10,547
1997	81,692	+2.1	9,064
1998*	n/a	-	n/a



*Data input incomplete at press time. The 1999 Annual Report will have the 1998 accidents statistics published.

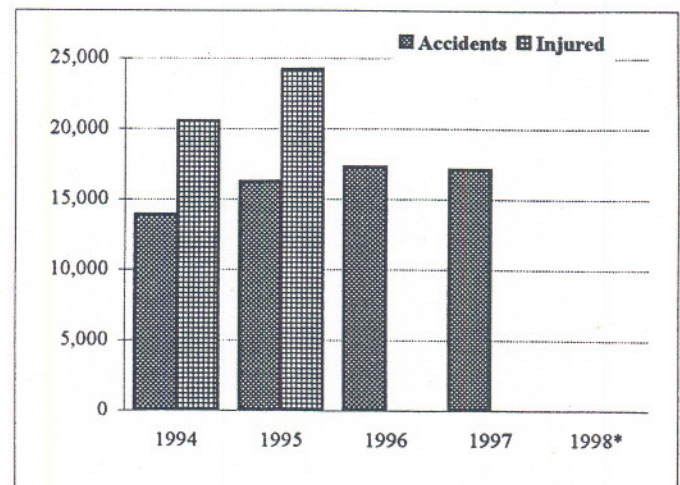
Fatal Accidents and Persons Killed

Year	Accidents	% Change	Killed
1994	66	-4.3	70
1995	69	+4.5	84
1996	76	+10.1	76
1997	78	+2.6	79
1998	80	+2.7	86



Injury Accidents and Persons Injured

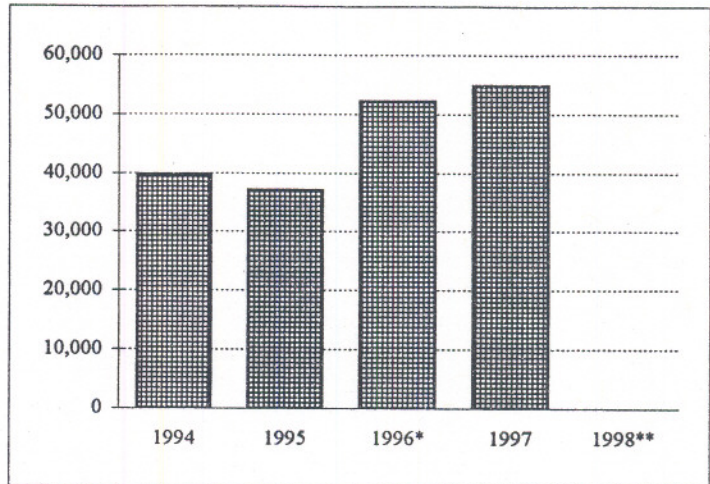
Year	Accidents	% Change	Injured
1994	13,902	+3.9	20,556
1995	16,247	+16.9	24,255
1996	17,256 ^b	+6.2	n/a ^a
1997	17,091	-1.0	n/a ^a
1998*	n/a	-	n/a ^a



^aFigures not available due to changeover to new database

Property Damage Accidents

Year	Accidents	% Change
1994	39,773	-15.4
1995	36,982	-7.0
1996*	52,097	40.9
1997	54,787	5.2
1998**	n/a	-



* The sharp increase from 1995 is the result of the change in the method of accident reporting.

** Data input incomplete at press time. The 1999 Annual Report of 1999 will have the 1998 figures published.

Drinking and Driving Accidents

Year	Accidents	% Change
1991	2,465	-8.1
1992	2,436	-1.2
1993	2,070	-15.0
1994	1,930	-6.8
1995	1,903	-1.4

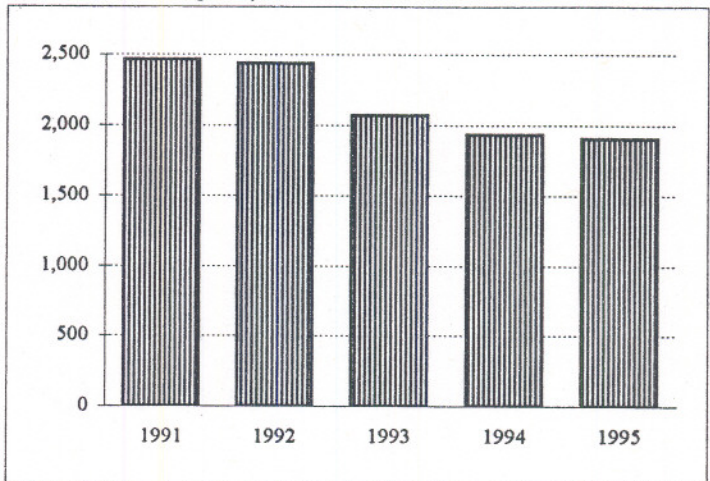


Figure not available from 1996 due to changeover to new database.

Charges Laid in Accidents*

Year	Charges	% Change
1991	40,471	-5.5
1992	39,715	-1.9
1993	31,625	-20.4
1994	22,431	-29.1
1995	21,037	-6.2

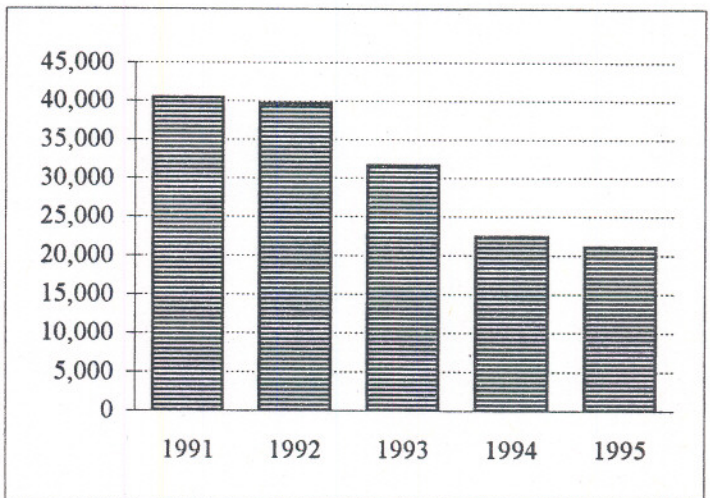
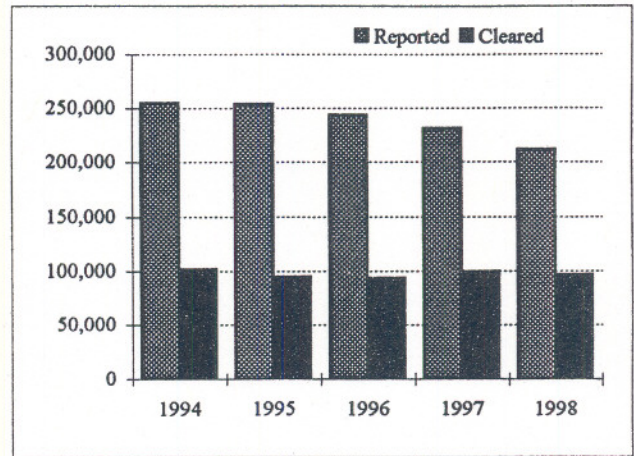


Figure not available from 1996 due to changeover to new database.

* Includes Non-Reportable accidents

Total Criminal Code Offences*

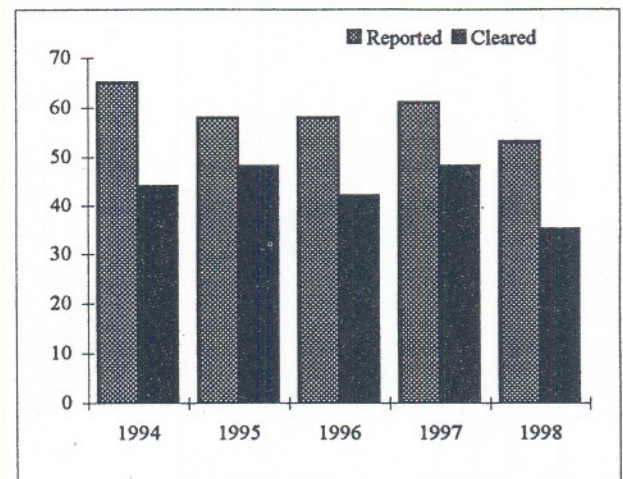
Year	Reported	% Change	Rate per 100,000 of Population	Cleared	% Cleared
1994	254,473	-4.7	10,849.1	101,470	39.9
1995	253,517	-0.4	10,717.7	94,700	37.4
1996	243,873	-3.8	10,223.5	93,256	38.2
1997	230,993	-5.3	9,602.3	99,142	42.9
1998	211,301	-8.5	8,710.0	96,169	45.5



*Excluding Criminal Code traffic offences. Statistics published prior to 1997 included Criminal Code traffic offences.

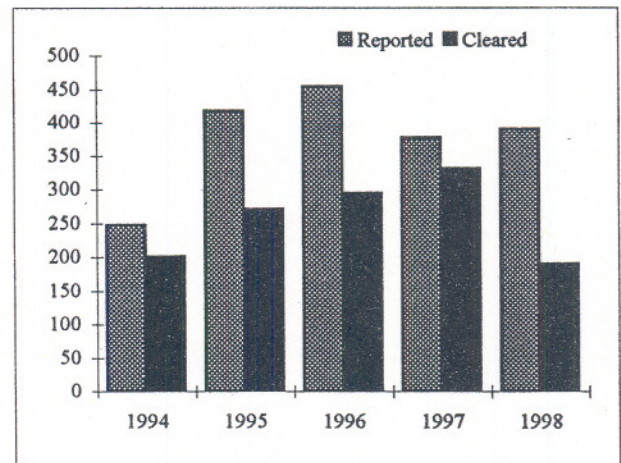
Homicides

Year	Reported	% Change	Rate per 100,000 of Population	Cleared	% Cleared
1994	65	+10.2	2.8	44	67.7
1995	58	-10.8	2.5	48	82.8
1996	58	-1.7	2.4	42	73.7
1997	61	5.2	2.5	48	78.7
1998	53	-13.1	2.2	35	66.0



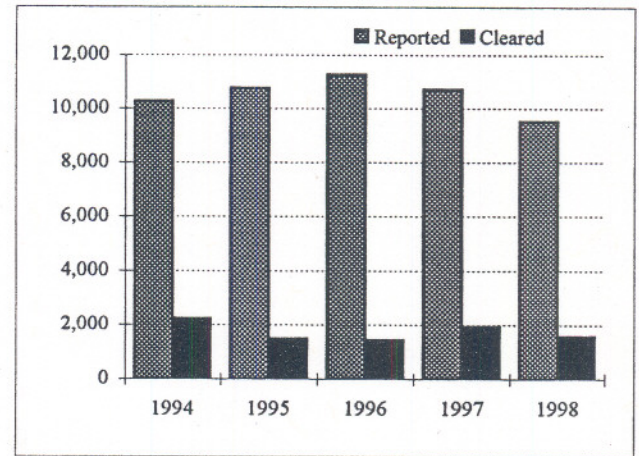
Robberies (Financial Institutions only)

Year	Reported	% Change	Rate per 100,000 of Population	Cleared	% Cleared
1994	248	-36.2	10.6	201	81.0
1995	418	+68.5	17.7	271	64.8
1996	454	+8.6	19.0	294	64.8
1997	377	-17.0	15.7	331	87.8
1998	390	+3.4	16.1	190	48.7



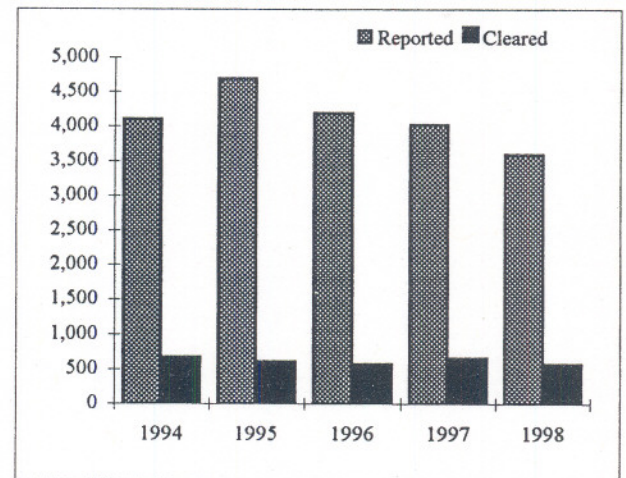
Break and Enter - Houses

Year	Reported	% Change	Rate per 100,000 of Population	Cleared	% Cleared
1994	10,268	-5.0	437.8	2,235	21.8
1995	10,740	+4.6	454.0	1,491	13.9
1996	11,254	+4.8	471.8	1,436	12.8
1997	10,704	-4.9	445.0	1,921	17.9
1998	9,528	-11.0	392.8	1,569	16.5



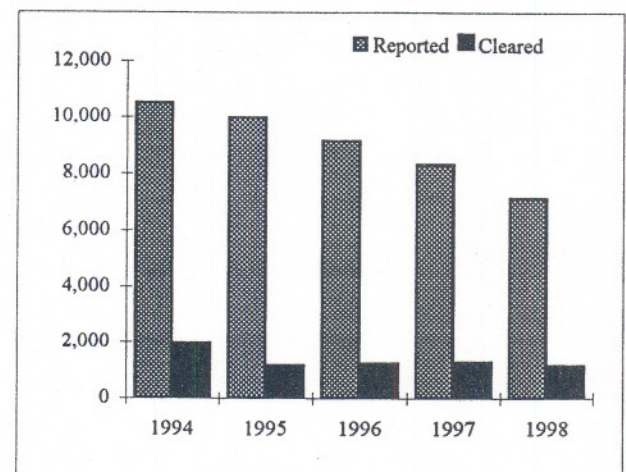
Break and Enter - Apartments

Year	Reported	% Change	Rate per 100,000 of Population	Cleared	% Cleared
1994	4,103	+1.8	174.9	652	15.9
1995	4,694	+14.4	198.4	591	12.6
1996	4,195	-10.6	175.9	551	13.1
1997	4,026	-4.0	167.4	638	15.8
1998	3,597	-10.7	148.3	556	15.5



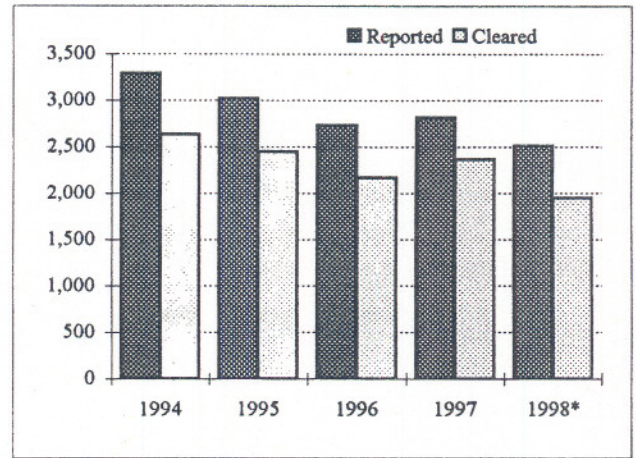
Break and Enter - Business Premises

Year	Reported	% Change	Rate per 100,000 of Population	Cleared	% Cleared
1994	10,518	+0.6	448.4	1,911	18.2
1995	9,982	-5.1	422.0	1,131	11.3
1996	9,150	-8.3	383.6	1,192	13.0
1997	8,319	-9.1	345.8	1,232	14.8
1998	7,127	-14.3	293.8	1,128	15.8



Sexual Assaults

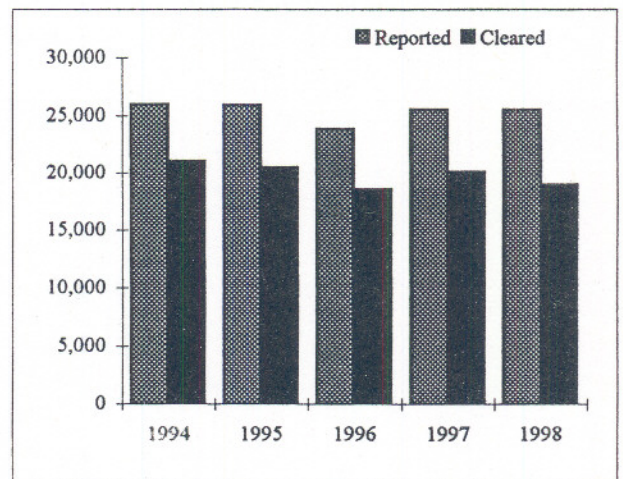
Year	Reported	% Change	Rate per 100,000 of Population	Cleared	% Cleared
1994	3,291	-6.4	140.3	2,636	80.1
1995	3,022	-8.2	127.8	2,444	80.9
1996	2,725	-9.8	114.2	2,164	79.4
1997	2,818	+3.4	117.1	2,364	83.9
1998*	2,510	-10.9	103.5	1,942	77.4



* Includes 431 "non-assaultive" sexual offences (e.g. Invitation to Sexual Touching; Sexual Exploitation etc.)

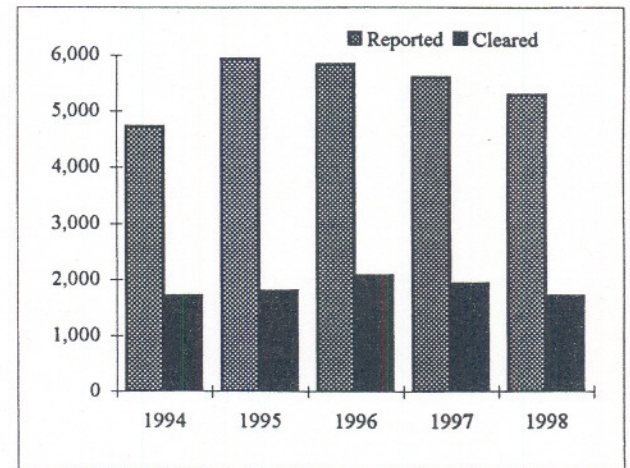
Non-Sexual Assaults

Year	Reported	% Change	Rate per 100,000 of Population	Cleared	% Cleared
1994	25,964	-2.1	1,106.9	21,049	81.1
1995	25,949	-0.1	1,097.0	20,506	79.0
1996	23,833	-8.2	999.1	18,576	77.9
1997	25,568	+7.3	1,062.9	20,082	78.5
1998	25,517	-0.2	1,051.8	19,009	74.5



Robberies (Including financial institution)

Year	Reported	% Change	Rate per 100,000 of Population	Cleared	% Cleared
1994	4,719	-10.4	201.2	1,700	36.0
1995	5,938	+25.8	251.0	1,800	30.3
1996	5,833	-1.8	244.5	2,063	35.4
1997	5,593	-4.1	232.5	1,920	34.3
1998	5,297	-5.3	218.4	1,705	32.2



VIOLENT CRIME, PROPERTY CRIME, OTHER CRIME AND CRIMINAL CODE TRAFFIC OFFENCES

YEAR	VIOLENT CRIME ²¹			PROPERTY CRIME			OTHER CRIME			CRIMINAL CODE TRAFFIC OFFENCES**			TOTAL CRIMINAL CODE OFFENCES		
	OFFENCE	CHANGE %	CLEAR* %	OFFENCE	CHANGE %	CLEAR* %	OFFENCE	CHANGE %	CLEAR* %	OFFENCE	CHANGE %	CLEAR* %	OFFENCE	CHANGE %	CLEAR* %
1994	34,750	-3.5	74.8	146,712	-5.1	23.4	73,011	-4.3	56.3	27,427	0.0	39.4	281,900	-4.2	39.8
1995	35,506	2.2	71.1	145,385	-0.9	21.0	72,626	-0.5	53.6	24,143	-12.0	42.7	277,660	-1.5	37.8
1996	33,069	-6.9	70.6	144,600	-0.5	22.3	66,203	-8.8	56.8	13,893	-42.5	52.0	257,765	-7.2	39.0
1997	34,663	4.8	71.8	133,775	-7.5	25.9	62,555	-5.5	63.3	3,818	-72.5	99.6	234,811	-8.9	43.8
1998	33,923	-2.1	68.2	116,278	-13.1	29.2	61,100	-2.3	63.9	3,640	-4.7	99.0	214,941	-8.5	46.4

* Clearance rate

** 1996 figure includes 'Fail to remain' offences for about six months.

1997 and 1998 figures do not include 'Fail to remain' offences.

All other years include complete 'Fail to remain' offences.

Categories of Crime:

- (1) **Violent crime** includes homicide and homicide related offences, sexual assaults, sexual offences, non-sexual assaults, abduction, and robberies.
- (2) **Property crime** includes break and enter, all types of thefts, possession of stolen goods, and fraud.
- (3) **Other crime** includes all other non-traffic Criminal Code offences not covered by categories (1) and (2).
- (4) **Traffic offences** include all Criminal Code traffic offences.
- (5) **Total Criminal Code offences** include all the above four categories.

²¹ The definition for violent crime was revised in 1996.

Statistics published prior to 1996 included weapons offences in 'Violent Crime'. Starting from 1996 publication, weapons offences are included in 'Other Crime'. Statistics for years prior to 1996 were revised accordingly.

UNIT	VIOLENT CRIME			PROPERTY CRIME			OTHER CRIME			CRIMINAL CODE TRAFFIC OFFENCES**			TOTAL CRIMINAL CODE OFFENCES		
	OFFENCE	RATE*	CLEAR %	OFFENCE	RATE*	CLEAR %	OFFENCE	RATE*	CLEAR %	OFFENCE	RATE*	CLEAR %	OFFENCE	RATE*	CLEAR %
11	1387	1,453	74.6	4026	4,218	24.9	2957	3,098	64.1	218	228	99.5	8,588	8,930	48.3
12	1696	1,900	74.3	3501	3,922	27.4	2460	2,756	64.4	177	198	98.9	7,834	8,661	50.8
13	1510	1,126	70.5	4667	3,482	18.9	2849	2,125	54.8	169	126	98.8	9,195	6,678	40.0
14	3252	2,282	71.1	9123	6,402	24.5	4987	3,499	63.2	367	258	98.9	17,729	11,589	45.4
21	845	1,498	78.8	2430	4,307	30.4	1669	2,958	73.6	180	319	99.4	5,124	9,148	54.9
22	955	762	68.0	5487	4,378	23.1	2627	2,096	57.3	295	235	98.6	9,364	7,168	39.6
23	2238	1,467	62.7	6663	4,368	22.5	2907	1,906	47.0	292	191	99.7	12,100	8,172	37.7
31	2935	1,585	68	7462	4,029	21.3	3667	1,980	52.4	268	145	98.9	14,332	7,660	40.2
32	1652	865	60.1	8482	4,440	26.6	3682	1,927	52.5	192	101	99.5	14,008	7,258	38.4
33	1205	670	77	5728	3,184	31.1	2177	1,210	59.5	145	81	100.7	9,255	5,102	44.9
41	3017	1,374	61.9	9079	4,135	26.1	5371	2,446	59.4	322	147	98.8	17,789	8,048	43.5
42	3389	971	69.8	11767	3,372	58.5	5323	1,526	92.2	279	80	99.3	20,758	6,055	69.5
51	1836	2,922	66.8	5132	8,166	36.5	4404	7,008	81.2	130	207	95.4	11,502	18,267	59.1
52	3076	4,330	61.0	17318	24,377	26.9	8232	11,588	70.7	198	279	100.0	28,824	43,467	43.6
53	921	694	70.7	5100	3,845	19.0	1857	1,400	41.3	82	62	100.0	7,960	5,976	31.0
54	1675	1,321	72.8	3712	2,928	26.9	2325	1,834	58.2	165	130	99.4	7,877	6,063	47.4
55	2334	2,075	69.2	6601	5,870	30.6	3606	3,207	55.7	161	143	97.5	12,702	10,923	45.7
TORONTO	33,923	1,398	68.2	116,278	4,793	29.2	61,100	2,519	63.9	3,640	150	99.0	214,941	8,787	46.4

Categories of Crime:

** Does not include 'Fail to remain' offences.

Note: Cleared cases may include offences committed before 1998.

- (1) **Violent crime** includes homicide and homicide related offences, sexual assaults, sexual offences, non-sexual assault/s, abduction, and robberies.
- (2) **Property crime** includes break and enter, all types of thefts, possession of stolen goods, and fraud.
- (3) **Other crime** includes all other non-traffic Criminal Code offences not covered by categories (1) and (2).
- (4) **Traffic offences** include all Criminal Code traffic offences.
- (5) **Total Criminal Code offences** include all the above four categories.

* Rate per 100,000 of population
No allowance was given to
transient or commuting population.

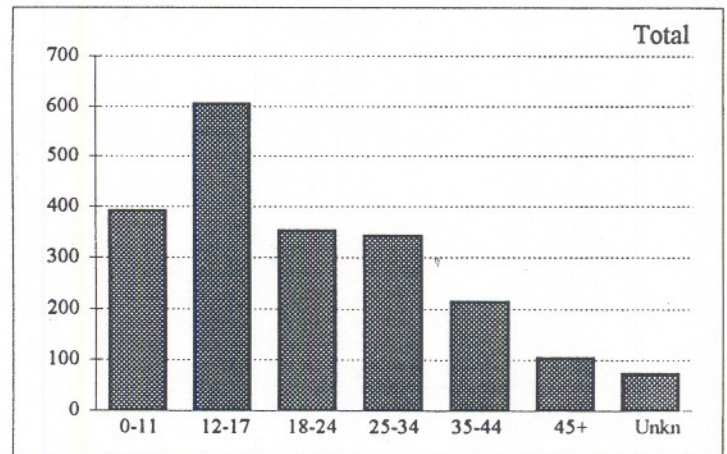
Offences Broken Down by Age and Sex of Victim

TPS 1998 Statistical Report

Sexual Assaults*

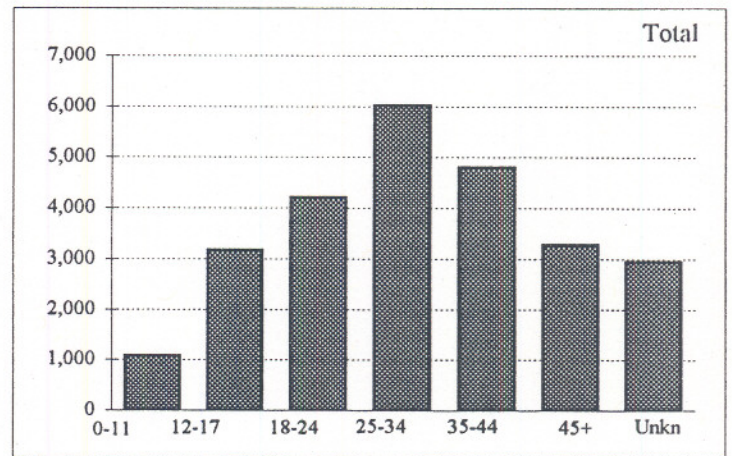
Age	Males	Females	Total	% of Total
0-11	110	281	391	18.81
12-17	65	539	604	29.05
18-24	24	328	352	16.93
25-34	33	309	342	16.45
35-44	12	201	213	10.25
45+	5	99	104	5.00
Unkn	13	60	73	3.51
Total	262	1,817	2,079	100.00

*Includes all types of Sexual Assaults, but excludes 431 Sexual Offences included on page 15.



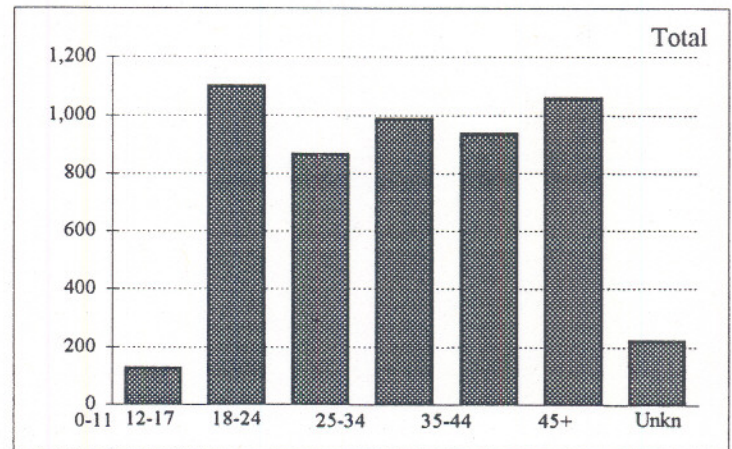
Non-Sexual Assaults

Age	Males	Females	Total	% of Total
0-11	692	390	1,082	4.24
12-17	1,777	1,391	3,168	12.42
18-24	1,933	2,277	4,210	16.50
25-34	2,936	3,089	6,025	23.61
35-44	2,397	2,404	4,801	18.81
45+	1,829	1,457	3,286	12.88
Unkn	2,074	871	2,945	11.54
Total	13,638	11,879	25,517	100.00



Robberies

Age	Males	Females	Total	% of Total
0-11	103	22	125	2.36
12-17	968	132	1,100	20.77
18-24	584	283	867	16.37
25-34	623	364	987	18.63
35-44	561	377	938	17.71
45+	565	495	1,060	20.01
Unkn	134	86	220	4.15
Total	3,538	1,759	5,297	100.00

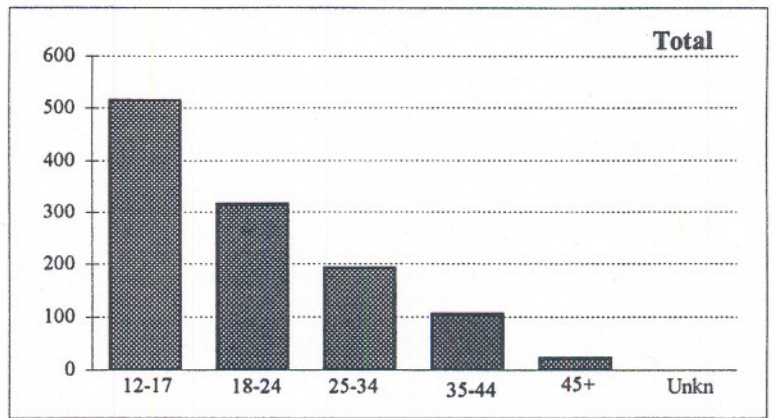


Persons Charged by Age and Sex

TPS 1998 Statistical Report

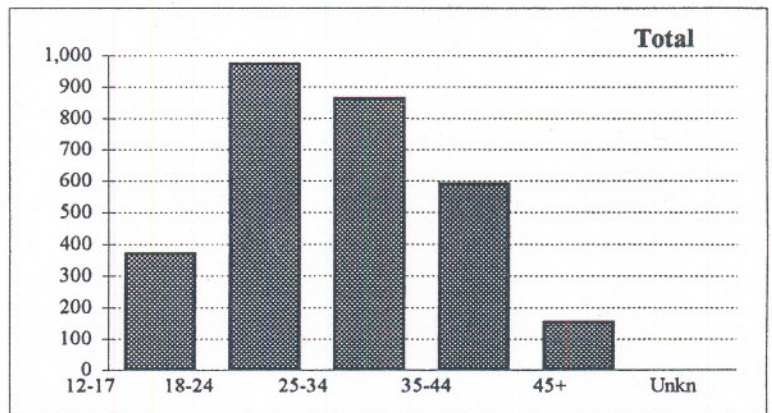
Robberies

Age	Males	Females	Total	% of Total
12-17	452	63	515	44.78
18-24	290	26	316	27.48
25-34	165	27	192	16.70
35-44	95	10	105	9.13
45+	20	2	22	1.91
Unkn	0	0	0	0.00
Total	1,022	128	1,150	100.00



Drug Offences*

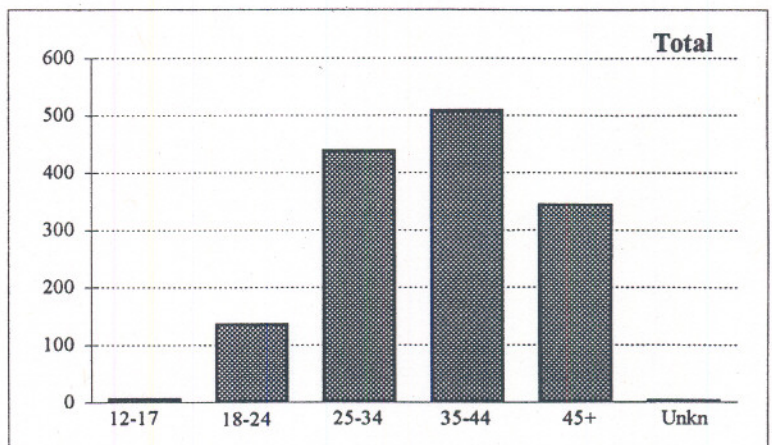
Age	Males	Females	Total	% of Total
12-17	315	55	370	12.53
18-24	884	89	973	32.95
25-34	716	149	865	29.29
35-44	490	100	590	19.98
45+	134	21	155	5.25
Unkn	0	0	0	0.00
Total	2,539	414	2,953	100.00



* Includes Food & Drug Act and Narcotic Control Act

Drinking and Driving Offences

Age	Males	Females	Total	% of Total
12-17	5	0	5	0.35
18-24	121	15	136	9.49
25-34	406	32	438	30.57
35-44	463	45	508	35.45
45+	315	29	344	24.01
Unkn	2	0	2	0.14
Total	1,312	121	1,433	100.00

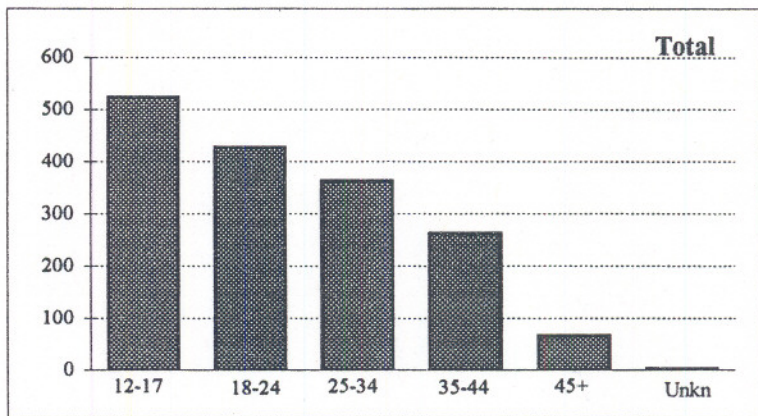


Persons Charged by Age and Sex

TPS 1998 Statistical Report

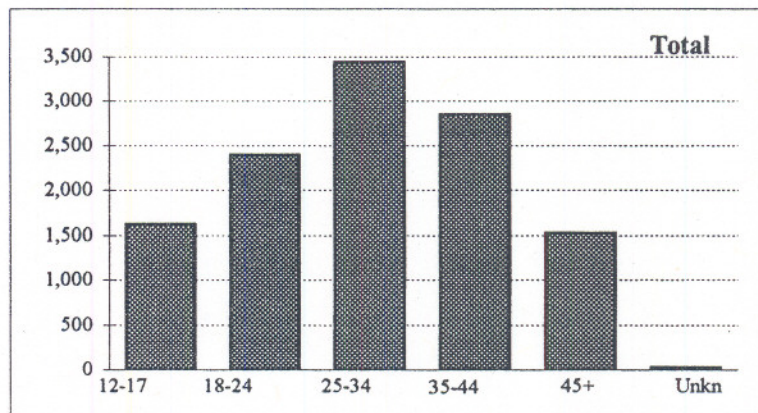
Break and Enters

Age	Males	Females	Total	% of Total
12-17	490	34	524	31.87
18-24	411	16	427	25.97
25-34	346	16	362	22.02
35-44	249	14	263	16.00
45+	64	2	66	4.01
Unkn	2	0	2	0.12
Total	1,562	82	1,644	100.00



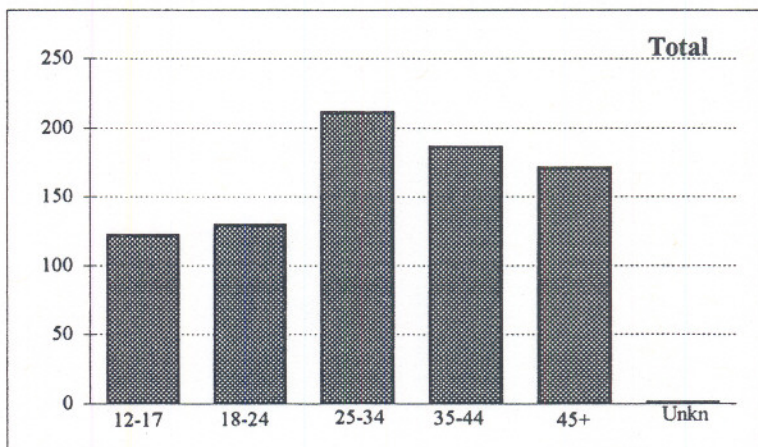
Non-Sexual Assaults

Age	Males	Females	Total	% of Total
12-17	1,202	422	1,624	13.69
18-24	1,997	399	2,396	20.20
25-34	2,833	604	3,437	28.97
35-44	2,411	441	2,852	24.04
45+	1,333	195	1,528	12.88
Unkn	17	8	25	0.21
Total	9,793	2,069	11,862	100.00



Sexual Assaults

Age	Males	Females	Total	% of Total
12-17	119	3	122	14.88
18-24	127	2	129	15.73
25-34	204	7	211	25.73
35-44	182	4	186	22.68
45+	170	1	171	20.85
Unkn	1	0	1	0.12
Total	803	17	820	100.00

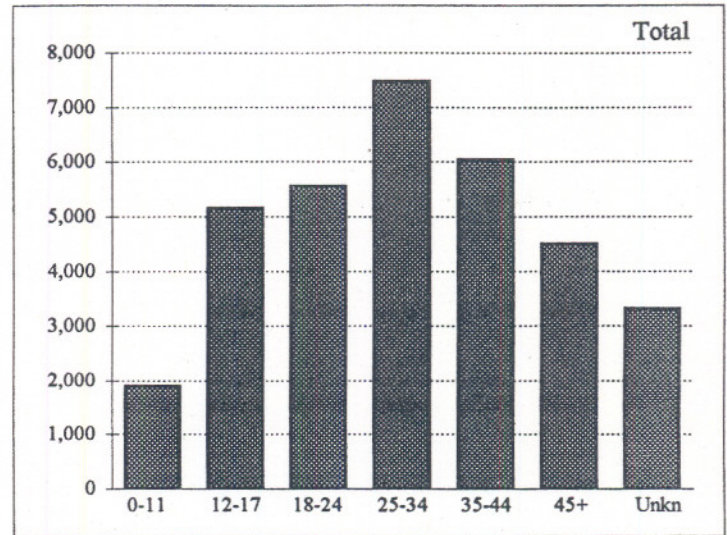


Violent Crime Broken Down by Age and Sex of Victim

TPS 1998 Statistical Report

Violent Crime*

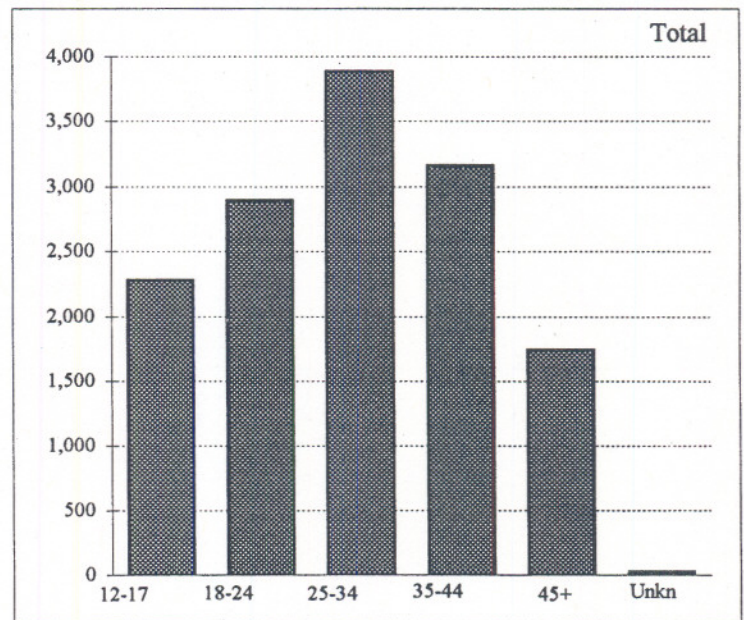
Age	Males	Females	Total	% of Total
0-11	998	899	1,897	5.59
12-17	2,887	2265	5,152	15.19
18-24	2,588	2969	5,557	16.38
25-34	3,638	3830	7,468	22.01
35-44	3,002	3040	6,042	17.81
45+	2,423	2073	4,496	13.25
Unkn	2,249	1062	3,311	9.76
Total	17,785	16,138	33,923	100.00



* Violent crime includes homicide and homicide related offences, sexual assaults, sexual offences, non-sexual assaults, abduction, and robberies.

Persons charged for violent crime

Age	Males	Females	Total	% of Total
12-17	1,790	490	2,280	16.30
18-24	2,461	429	2,890	20.66
25-34	3,236	647	3,883	27.77
35-44	2,707	457	3,164	22.62
45+	1,543	199	1,742	12.46
Unkn	18	8	26	0.19
Total	11,755	2,230	13,985	100.00

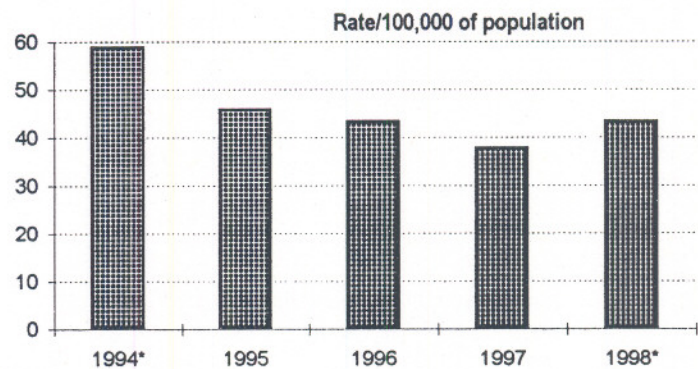


Selected Offences Against Police Officers

TPS 1998 Statistical Report

	1994	1995	1996	1997	1998
Murder	1	0	0	0	1
Attempted Murder	8	8	4	3	4
Aggravated Assault	3	5	4	2	4
Assault With Weapon or Causing Bodily Harm	69	70	74	55	54
Assault	283	195	144	126	124
Assault Police Officer	474	393	442	383	464
Assault to Resist Arrest	515	399	352	332	395
Attempt to choke, strangle, etc.	1	1	0	1	1
Point/dangerous use of firearm	22	10	4	4	1
Discharge firearm with intent to prevent arrest	0	0	1	0	0
Dangerous operation of a motor vehicle causing bodily harm	5	2	8	4	4
Total offences	1,381	1,083	1,033	910	1,052

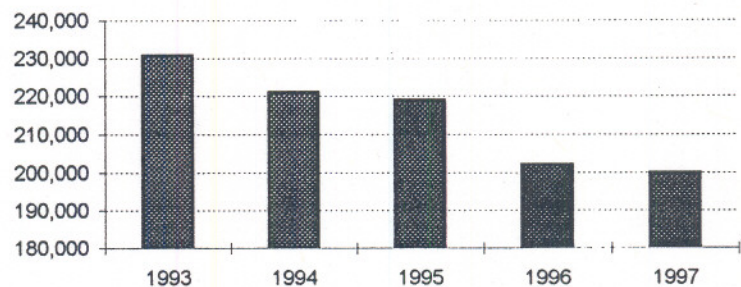
Year	No: of Offences	Rate/100,000 Population	Variance in Rate(%)
1994*	1381	58.88	-3.24
1995	1083	45.78	-22.25
1996	1033	43.30	-5.42
1997	910	37.83	-12.63
1998*	1052	43.36	14.62



* 1 murder

Incidents as Reported to Statistics Canada*

Year	Incidents
1993	230,859
1994	221,033
1995	219,048
1996	202,122
1997	199,923



* Total Criminal Code(C.C.), excluding C. C. Traffic incidents.
Value for 1998 is not available from Statistics Canada at press time;
the 1999 annual report will contain this information.

Criminal Code Offences Reported and Cleared*- Field Command and Metro Totals

TPS 1998 Statistical Report

	First Degree Murder	Second Degree Murder	Manslaughter	Attempted Murder	Sexual Assault	Other Assault	Robbery	Break and Enter	Theft of Motor Vehicle**	Theft Over \$5,000	Theft Under \$5,000	Fraud	Offensive Weapons offences	Other Criminal Code	Total Criminal Code Non-Traffic	Criminal Code Traffic†	Total Criminal Code
--	---------------------	----------------------	--------------	------------------	----------------	---------------	---------	-----------------	--------------------------	--------------------	---------------------	-------	----------------------------	---------------------	---------------------------------	------------------------	---------------------

Central Command	Reported	13	10	1	49	950	12,215	2,377	8,907	4,746	1,152	33,656	3,653	1,781	33,322	102,832	1,502	104,334
	Cleared	2	10	1	33	692	9,073	857	1,553	576	142	6,307	2,726	1,705	22,326	46,003	1,483	47,486
	% Cleared	15.4	100.0	100.0	67.3	72.8	74.3	36.1	17.4	12.1	12.3	18.7	74.6	95.7	67.0	44.7	98.7	45.5

North West Command	Reported	11	3	0	28	574	7,421	1,553	6,053	6,255	694	18,764	2,675	877	17,903	62,811	1,372	64,183
	Cleared	8	3	0	14	415	5,531	452	911	645	110	3,875	1,781	803	10,463	25,011	1,363	26,374
	% Cleared	72.7	100.0	0.0	50.0	72.3	74.5	29.1	15.1	10.3	15.9	20.7	66.6	91.6	58.4	39.8	99.3	41.1

East Command	Reported	5	10	0	15	555	5,881	1,367	5,345	4,188	364	11,803	1,517	877	13,731	45,658	766	46,424
	Cleared	1	10	0	13	406	4,405	396	799	619	141	6,334	1,023	810	10,198	25,155	759	25,914
	% Cleared	20.0	100.0	0.0	86.7	73.2	74.9	29.0	14.9	14.8	38.7	53.7	67.4	92.4	74.3	55.1	99.1	55.8

Toronto	Reported	29	23	1	92	2,079	25,517	5,297	20,305	15,189	2,210	64,223	7,845	3,535	64,956	211,301	3,640	214,941
	Cleared	11	23	1	60	1,513	19,009	1,705	3,263	1,840	393	16,516	5,530	3,318	42,987	96,169	3,605	99,774
	% Cleared	37.9	100.0	100.0	65.2	72.8	74.5	32.2	16.1	12.1	17.8	25.7	70.5	93.9	66.2	45.5	99.0	46.4

* Cleared cases may include offences reported prior to 1998.

** Include motor cycle and snow vehicle and all attempts.

† Statistics do not include 'Fail to Remain' violations.

Criminal Code Offences Reported and Cleared*- Central Field Command

TPS 1998 Statistical Report

		First Degree Murder	Second Degree Murder	Manslaughter	Attempted Murder	Sexual Assault	Other Assault	Robbery	Break and Enter	Theft of Motor Vehicle**	Theft Over \$5,000	Theft Under \$5,000	Fraud	Offensive Weapons Offences	Other Criminal Code	Total Criminal Code Non-Traffic	Criminal Code Traffic†	Total Criminal Code
11 Division	Reported	1	3	0	4	83	1,113	150	773	496	40	2,250	193	113	3,151	8,370	218	8,588
	Cleared	1	3	0	3	73	855	72	157	58	6	386	125	107	2,086	3,932	217	4,149
	% Cleared	100.0	100.0	0.0	75.0	88.0	76.8	48.0	20.3	11.7	15.0	17.2	64.8	94.7	66.2	47.0	99.5	48.3
12 Division	Reported	0	1	0	7	113	1,344	185	720	449	50	1,792	245	189	2,562	7,657	177	7,834
	Cleared	0	2	0	2	91	1,062	57	141	54	7	383	132	178	1,696	3,805	175	3,980
	% Cleared	0.0	200.0	0.0	28.6	80.5	79.0	30.8	19.6	12.0	14.0	21.4	53.9	94.2	66.2	49.7	98.9	50.8
13 Division	Reported	1	1	0	10	95	1,161	198	997	551	54	2,517	322	221	2,898	9,026	169	9,195
	Cleared	0	1	0	6	72	876	62	137	79	9	228	204	219	1,616	3,509	167	3,676
	% Cleared	0.0	100.0	0.0	60.0	75.8	75.5	31.3	13.7	14.3	16.7	9.1	63.4	99.1	55.8	38.9	98.8	40.0
14 Division	Reported	3	1	1	8	188	2,600	382	1,807	815	151	5,399	399	354	5,254	17,362	367	17,729
	Cleared	1	1	1	2	130	1,951	159	313	105	18	985	267	344	3,417	7,694	363	8,057
	% Cleared	33.3	100.0	100.0	25.0	69.1	75.0	41.6	17.3	12.9	11.9	18.2	66.9	97.2	65.0	44.3	98.9	45.4
51 Division	Reported	6	1	0	9	101	1,304	365	874	448	98	2,988	314	313	4,551	11,372	130	11,502
	Cleared	0	2	0	8	67	967	144	174	74	16	920	279	303	3,720	6,674	124	6,798
	% Cleared	0.0	200.0	0.0	88.9	66.3	74.2	39.5	19.9	16.5	16.3	30.8	88.9	96.8	81.7	58.7	95.4	59.1

* Cleared cases may include offences reported prior to 1998.

** Include motor cycle and snow vehicle and all attempts.

† Statistics do not include 'Fail to Remain' violations.

Continued on next page

Criminal Code Offences Reported and Cleared*- Central Field Command(Cont'd)

TPS 1998 Statistical Report

	First Degree Murder	Second Degree Murder	Manslaughter	Attempted Murder	Sexual Assault	Other Assault	Robbery	Break and Enter	Theft of Motor Vehicle**	Theft Over \$5,000	Theft Under \$5,000	Fraud	Offensive Weapons Offences	Other Criminal Code	Total Criminal Code Non-Traffic	Criminal Code Traffic	Total Criminal Code
--	---------------------	----------------------	--------------	------------------	----------------	---------------	---------	-----------------	--------------------------	--------------------	---------------------	-------	----------------------------	---------------------	---------------------------------	-----------------------	---------------------

52 Division	Reported	1	2	0	5	173	2,238	597	1,497	651	596	12,171	1,425	300	8,971	28,627	198	28,825
	Cleared	0	1	0	5	110	1,534	168	220	81	53	2,152	1,178	274	6,579	12,355	198	12,553
	% Cleared	0.0	50.0	0.0	100.0	63.6	68.5	28.1	14.7	12.4	8.9	17.7	82.7	91.3	73.3	43.2	100.0	43.5

53 Division	Reported	0	0	0	1	53	692	165	1,005	558	104	2,966	358	67	1,909	7,878	82	7,960
	Cleared	0	0	0	1	37	523	82	154	46	16	395	252	65	818	2,389	82	2,471
	% Cleared	0.0	0.0	0.0	100.0	69.8	75.6	49.7	15.3	8.2	15.4	13.3	70.4	97.0	42.8	30.3	100.0	31.0

55 Division	Reported	1	1	0	5	144	1,763	335	1,234	778	60	3,573	397	224	4,026	12,541	161	12,702
	Cleared	0	0	0	6	112	1,305	113	257	79	16	858	289	215	2,394	5,644	157	5,801
	% Cleared	0.0	0.0	0.0	120.0	77.8	74.0	33.7	20.8	10.2	26.7	24.0	72.8	96.0	59.5	45.0	97.5	45.7

Central Command	Reported	13	10	1	49	950	12,215	2,377	8,907	4,746	1,152	33,656	3,653	1,781	33,322	102,832	1,502	104,334
	Cleared	2	10	1	33	692	9,073	857	1,553	576	142	6,307	2,726	1,705	22,326	46,003	1,483	47,486
	% Cleared	15.4	100.0	100.0	67.3	72.8	74.3	36.1	17.4	12.1	12.3	18.7	74.6	95.7	67.0	44.7	98.7	45.5

* Cleared cases may include offences reported prior to 1998.

** Include motor cycle and snow vehicle and all attempts.

†Statistics do not include 'Fail to Remain' violations.

Criminal Code Offences Reported and Cleared*- North West Command

TPS 1998 Statistical Report

		First Degree Murder	Second Degree Murder	Manslaughter	Attempted Murder	Sexual Assault	Other Assault	Robbery	Break and Enter	Theft of Motor Vehicle**	Theft Over \$5,000	Theft Under \$5,000	Fraud	Offensive Weapons Offences	Other Criminal Code	Total Criminal Code Non-Traffic	Criminal Code Traffic†	Total Criminal Code
21 Division	Reported	1	0	0	1	43	673	99	497	355	39	1,147	248	72	1,769	4,944	180	5,124
	Cleared	0	0	0	1	35	566	39	164	50	10	204	169	69	1,325	2,632	179	2,811
	% Cleared	0.0	0.0	0.0	100.0	81.4	84.1	39.4	33.0	14.1	25.6	17.8	68.1	95.8	74.9	53.2	99.4	54.9
22 Division	Reported	2	0	0	1	63	725	144	941	933	123	2,903	334	112	2,788	9,069	295	9,364
	Cleared	2	0	0	1	42	535	54	106	83	24	583	219	106	1,665	3,420	291	3,711
	% Cleared	100.0	0.0	0.0	100.0	66.7	73.8	37.5	11.3	8.9	19.5	20.1	65.6	94.6	59.7	37.7	98.6	39.6
23 Division	Reported	2	1	0	7	141	1,691	351	923	1,455	145	3,528	363	153	3,048	11,808	292	12,100
	Cleared	2	1	0	3	102	1,169	87	146	133	13	719	240	136	1,517	4,268	291	4,559
	% Cleared	100.0	100.0	0.0	42.9	72.3	69.1	24.8	15.8	9.1	9.0	20.4	66.1	88.9	49.8	36.1	99.7	37.7

* Cleared cases may include offences reported prior to 1998.

** Include motor cycle and snow vehicle and all attempts.

† Statistics do not include 'Fail to Remain' violations.

Continued on next page

Criminal Code Offences Reported and Cleared*- North West Command(Cont'd)

TPS 1998 Statistical Report

	First Degree Murder	Second Degree Murder	Manslaughter	Attempted Murder	Sexual Assault	Other Assault	Robbery	Break and Enter	Theft of Motor Vehicle**	Theft Over \$5,000	Theft Under \$5,000	Fraud	Offensive Weapons Offences	Other Criminal Code	Total Criminal Code Non-Traffic	Criminal Code Traffic†	Total Criminal Code	
31 Division	Reported	2	2	0	12	176	2,200	462	1,326	1,445	113	3,608	605	300	3,813	14,064	268	14,332
	Cleared	1	2	0	4	133	1,636	142	173	118	15	583	334	269	2,093	5,503	265	5,768
	%Cleared	50.0	100.0	0.0	33.3	75.6	74.4	30.7	13.0	8.2	13.3	16.2	55.2	89.7	54.9	39.1	98.9	40.2
32 Division	Reported	3	0	0	6	83	1,228	306	1,365	1,164	176	4,506	733	148	4,098	13,816	192	14,008
	Cleared	2	0	0	4	41	845	78	117	107	23	937	531	141	2,356	5,182	191	5,373
	% Cleared	66.7	0.0	0.0	66.7	49.4	68.8	25.5	8.6	9.2	13.1	20.8	72.4	95.3	57.5	37.5	99.5	38.4
33 Division	Reported	1	0	0	1	68	904	191	1,001	903	98	3,072	392	92	2,387	9,110	145	9,255
	Cleared	1	0	0	1	62	780	52	205	154	25	849	288	82	1,507	4,006	146	4,152
	% Cleared	100.0	0.0	0.0	100.0	91.2	86.3	27.2	20.5	17.1	25.5	27.6	73.5	89.1	63.1	44.0	100.7	44.9
North West Command	Reported	11	3	0	28	574	7,421	1,553	6,053	6,255	694	18,764	2,675	877	17,903	62,811	1,372	64,183
	Cleared	8	3	0	14	415	5,531	452	911	645	110	3,875	1,781	803	10,463	25,011	1,363	26,374
	% Cleared	72.7	100.0	0.0	50.0	72.3	74.5	29.1	15.1	10.3	15.9	20.7	66.6	91.6	58.4	39.8	99.3	41.1

* Cleared cases may include offences reported prior to 1998.

** Include motor cycle and snow vehicle and all attempts.

†Statistics do not include 'Fail to Remain' violations.

Criminal Code Offences Reported and Cleared* - East Field Command

TPS 1998 Statistical Report

	First Degree Murder	Second Degree Murder	Manslaughter	Attempted Murder	Sexual Assault	Other Assault	Robbery	Break and Enter	Theft of Motor Vehicle**	Theft Over \$5,000	Theft Under \$5,000	Fraud	Offensive Weapons Offences	Other Criminal Code	Total Criminal Code Non-Traffic	Criminal Code Traffic†	Total Criminal Code	
41 Division	Reported	1	3	0	4	204	2,242	490	1,693	1,618	141	4,477	618	323	5,653	17,467	322	17,789
	Cleared	1	3	0	4	136	1,490	169	298	138	25	986	399	289	3,489	7,427	318	7,745
	% Cleared	100.0	100.0	0.0	100.0	66.7	66.5	34.5	17.6	8.5	17.7	22.0	64.6	89.5	61.7	42.5	98.8	43.5
42 Division	Reported	3	6	0	8	216	2,353	674	2,764	1,943	177	5,690	653	420	5,572	20,479	279	20,758
	Cleared	0	5	0	7	178	1,923	136	290	393	108	5,114	436	400	5,169	14,159	277	14,436
	% Cleared	0.0	83.3	0.0	87.5	82.4	81.7	20.2	10.5	20.2	61.0	89.9	66.8	95.2	92.8	69.1	99.3	69.5
54 Division	Reported	1	1	0	3	135	1,286	203	888	627	46	1,636	246	134	2,506	7,712	165	7,877
	Cleared	0	2	0	2	92	992	91	211	88	8	234	188	121	1,540	3,569	164	3,733
	% Cleared	0.0	200.0	0.0	66.7	68.1	77.1	44.8	23.8	14.0	17.4	14.3	76.4	90.3	61.5	46.3	99.4	47.4
East Command	Reported	5	10	0	15	555	5,881	1,367	5,345	4,188	364	11,803	1,517	877	13,731	45,658	766	46,424
	Cleared	1	10	0	13	406	4,405	396	799	619	141	6,334	1,023	810	10,198	25,155	759	25,914
	% Cleared	20.0	100.0	0.0	86.7	73.2	74.9	29.0	14.9	14.8	38.7	53.7	67.4	92.4	74.3	55.1	99.1	55.8

* Cleared cases may include offences reported prior to 1998.

** Include motor cycle and snow vehicle and all attempts.

† Statistics do not include 'Fail to Remain' violations.

Traffic and Other Offences - by Division

TPS 1998 Statistical Report

Criminal Code Traffic						Other Offences							
Dangerous Driving	Drive While Impaired	Refuse Breath/Blood/Screen	Over 80 mg	Drive while Disqualified	Total†	Drug*	Other Federal Statutes	Liquor Licence Act - Drunk	Liquor Licence Act - Other	Other Provincial Statutes	Municipal By-Laws**	Total†	Highway Traffic Act

11 Division	27	75	31	70	15	218	343	5	162	179	454	554	1,697	9,845
12 Division	22	70	15	54	16	177	574	3	64	81	298	421	1,441	6,389
13 Division	19	69	12	62	7	169	496	8	59	153	218	530	1,464	16,082
14 Division	48	138	30	138	12	366	1,126	7	527	860	1,490	2,141	6,151	13,768

21 Division	12	65	18	80	4	179	157	4	73	181	112	46	573	9,025
22 Division	34	101	26	122	12	295	90	2	81	97	213	186	669	13,851
23 Division	30	106	22	109	25	292	210	6	81	152	487	241	1,177	25,053

31 Division	34	111	19	90	13	267	379	26	48	235	573	325	1,586	18,265
32 Division	43	56	10	71	11	191	143	36	50	90	537	1,420	2,276	14,116
33 Division	21	50	10	58	6	145	65	8	17	42	202	784	1,118	15,491

41 Division	46	116	23	121	16	322	334	5	126	324	547	409	1,745	26,402
42 Division	48	100	15	103	13	279	393	1	44	213	446	105	1,202	32,673

51 Division	30	40	6	46	8	130	1,043	1	538	629	957	221	3,389	4,700
52 Division	30	73	13	74	8	198	875	9	357	1,042	1,653	7,875	11,811	13,814
53 Division	13	26	2	37	4	82	98	2	70	76	149	1,075	1,470	17,114
54 Division	28	57	18	55	7	165	240	0	59	66	279	356	1,000	13,753
55 Division	30	54	7	57	13	161	408	2	145	310	347	432	1,644	10,887

Toronto	515	1,307	277	1,347	190	3,636	6,974	125	2,501	4,730	8,962	17,121	40,413	261,228
----------------	------------	--------------	------------	--------------	------------	--------------	--------------	------------	--------------	--------------	--------------	---------------	---------------	----------------

* Includes Food & Drug Act and Narcotic Control Act.

† Excluding Highway Traffic Act.

‡ Excluding 'Fail to Remain' offences.

☞ Reflects the total Highway Traffic Act charges issued by divisional personnel.

The Total of the H.T.A. charges issued by divisional, traffic and other personnel was 312,739.

☞ Reflects the total Bylaw charges issued by divisional personnel. The total of the Bylaw charges issued by all units was 18,259.

Criminal Code Offences - Persons Charged

TPS 1998 Statistical Report

	First Degree Murder	Second Degree Murder	Manslaughter	Attempted Murder	Sexual Assault	Other Assault	Robbery	Break and Enter	Theft of Motor Vehicle	Theft Over \$5,000	Theft Under \$5,000	Fraud	Offensive Weapons Offences	Other Criminal Code	Total Criminal Code Non-Traffic	Total Criminal Code Traffic	Total Criminal Code
--	---------------------	----------------------	--------------	------------------	----------------	---------------	---------	-----------------	------------------------	--------------------	---------------------	-------	----------------------------	---------------------	---------------------------------	-----------------------------	---------------------

Young Offenders	Male	0	2	0	12	119	1,202	452	490	225	16	1,167	41	285	2,131	6,142	20	6,162
	Female	0	0	0	0	3	422	63	34	19	1	691	35	19	483	1,770	1	1,771
	Total	0	2	0	12	122	1,624	515	524	244	17	1,858	76	304	2,614	7,912	21	7,933

Adults	Male	6	14	3	64	684	8,591	570	1,072	363	109	4,423	1,106	691	10,435	28,131	1,588	29,719
	Female	2	6	0	1	14	1,647	65	48	29	29	2,405	546	67	3,563	8,422	138	8,560
	Total	8	20	3	65	698	10,238	635	1,120	392	138	6,828	1,652	758	13,998	36,553	1,726	38,279

Toronto	8	22	3	77	820	11,862	1,150	1,644	636	155	8,686	1,728	1,062	16,612	44,465	1,747	46,212
---------	---	----	---	----	-----	--------	-------	-------	-----	-----	-------	-------	-------	--------	--------	-------	--------

Traffic and Other Offences - Persons Charged

TPS 1998 Statistical Report

		Criminal Code Traffic							Other Offences					
		Fail to Remain	Dangerous Driving	Drive While Impaired	Refuse Breath/Blood/Screen	Over 80 mg	Drive while Disqualified	Total	Drug*	Other Federal Statutes	Liquor Licence Act - Drunk	Liquor License Act - Other	Other Provincial Statutes	Total**
Young Offenders	Male	3	11	3	0	2	1	20	315	0	45	362	478	1,200
	Female	0	1	0	0	0	0	1	55	0	9	66	184	314
	Total	3	12	3	0	2	1	21	370	0	54	428	662	1,514
Adults	Male	89	121	956	61	290	71	1,588	2,224	39	2,074	3,504	4,549	12,390
	Female	11	4	93	6	22	2	138	359	7	257	334	1,852	2,809
	Total	100	125	1,049	67	312	73	1,726	2,583	46	2,331	3,838	6,401	15,199
Toronto		103	137	1,052	67	314	74	1,747	2,953	46	2,385	4,266	7,063	16,713

* Includes Food & Drug Act and Narcotic Control Act.

** Excluding Highway Traffic Act and Municipal Bylaws.

Persons charged by unit⊗

TPS 1998 Statistical Report

Unit	Homicide	Attempted Murder	Sexual Assault	Other Assault	Robbery	Break and Enter	Motor Vehicle Theft*	Theft (All other)	Fraud	Offensive Weapons Offences	Other Criminal Code	Criminal Code Traffic	Drug	Other Offences**	Total charged
D11	1	2	40	527	55	77	26	246	41	52	892	86	178	654	2,877
D12	1	2	49	710	44	68	18	262	57	72	776	77	222	323	2,681
D13	1	4	34	588	35	68	46	123	77	55	682	61	236	346	2,356
D14	3	0	99	1,299	111	165	40	764	95	97	1,901	159	413	2,353	7,499
D21	0	1	19	321	22	36	12	66	39	21	518	117	37	312	1,521
D22	0	1	16	338	39	70	36	459	65	36	441	98	22	298	1,919
D23	1	3	40	722	41	51	26	557	103	38	607	133	62	605	2,989
D31	0	3	87	972	103	136	39	464	151	86	843	107	166	734	3,891
D32	0	4	26	612	53	79	53	891	155	55	785	79	96	564	3,452
D33	1	1	35	469	46	69	25	494	120	36	426	46	31	209	2,008
D41	2	16	60	802	75	151	41	827	148	79	1,121	129	54	826	4,331
D42	3	7	62	975	92	186	75	641	108	97	1,407	120	141	586	4,500
D51	1	9	38	632	108	80	32	231	51	98	1,708	42	342	1,899	5,271
D52	1	14	86	991	106	105	30	1,763	185	88	1,742	78	400	2,717	8,306
D53	0	1	21	312	34	50	15	245	79	40	492	37	260	251	1,837
D54	0	2	46	595	58	76	46	138	60	28	562	55	48	326	2,040
D55	0	4	51	897	69	149	47	619	61	67	1,051	56	126	712	3,909
SQUADS→	16	1	5	6	47	7	0	8	88	1	27	20	4	2	232
INT	1	0	1	13	6	0	3	11	8	3	18	0	3	1	68
SIS	0	0	1	5	0	4	6	7	14	2	175	0	5	8	227
TSV	0	0	0	18	1	5	11	13	12	3	122	247	9	19	460
OTHER	1	2	4	58	5	12	9	12	11	8	316	0	98	15	551
Toronto	33	77	820	11,862	1,150	1,644	636	8,841	1,728	1,062	16,612	1,747	2,953	13,760	62,925

* Includes attempt thefts

** Includes federal statutes other than drug acts, liquor control acts and other provincial statutes.Excludes Municipal Bylaws.

⊗ Unit of the arresting officer

→ Homicide, Fraud, Hold-up and Sexual Assault squads

INT - Intelligent Services, SIS - Special Investigative Services, TSV - Traffic Services