



## ARCHIVED - Archiving Content

### Archived Content

Information identified as archived is provided for reference, research or recordkeeping purposes. It is not subject to the Government of Canada Web Standards and has not been altered or updated since it was archived. Please contact us to request a format other than those available.

## ARCHIVÉE - Contenu archivé

### Contenu archivé

L'information dont il est indiqué qu'elle est archivée est fournie à des fins de référence, de recherche ou de tenue de documents. Elle n'est pas assujettie aux normes Web du gouvernement du Canada et elle n'a pas été modifiée ou mise à jour depuis son archivage. Pour obtenir cette information dans un autre format, veuillez communiquer avec nous.

This document is archival in nature and is intended for those who wish to consult archival documents made available from the collection of Public Safety Canada.

Some of these documents are available in only one official language. Translation, to be provided by Public Safety Canada, is available upon request.

Le présent document a une valeur archivistique et fait partie des documents d'archives rendus disponibles par Sécurité publique Canada à ceux qui souhaitent consulter ces documents issus de sa collection.

Certains de ces documents ne sont disponibles que dans une langue officielle. Sécurité publique Canada fournira une traduction sur demande.



# KEY PERFORMANCE INDICATORS

Q4 2009

Planning, Research & Audit Section

January 2010



## TABLE OF CONTENTS

<i>EXECUTIVE SUMMARY</i>	<u>4</u>
<i>INTRODUCTION</i>	<u>6</u>
<i>PROPERTY CRIME &amp; CLEARANCE RATES</i>	<u>7</u>
<i>VIOLENT CRIME &amp; CLEARANCE RATES</i>	<u>9</u>
<i>TRAFFIC RELATED INJURIES AND DEATHS</i>	<u>11</u>
<i>APPENDIX</i>	<u>13</u>



## LIST OF TABLES

<i>Table 1: Number of Reported Property Crimes</i>	7
<i>Table 2: Quarterly Property Crime Rates per 1,000 Population</i>	7
<i>Table 3: Property Crime Clearance Rates</i>	7
<i>Table 4: 2002 to 2009 Property Crime Rate per 1,000 Population</i>	8
<i>Table 5: Number of Reported Violent Crimes</i>	9
<i>Table 6: Quarterly Violent Crime Rates per 1,000 Population</i>	9
<i>Table 7: Violent Crime Clearance Rates</i>	9
<i>Table 8: 2002 to 2009 Violent Crime Rate per 1,000 Population</i>	10
<i>Table 9: Traffic Related Injuries</i>	11
<i>Table 10: Traffic Related Fatalities</i>	12



## TABLE OF FIGURES

*Figure 1: Annual Property Crime Rate per 1,000 Population* \_\_\_\_\_ 8

*Figure 2: Annual Violent Crime Rate per 1,000 Population* \_\_\_\_\_ 10

*Figure 3: Motor Vehicle Accidents with Injuries* \_\_\_\_\_ 11



---

## EXECUTIVE SUMMARY<sup>1</sup>

---

### Property Crime

The property crime rate decreased from 15.9 offences per 1,000 population in the same quarter last year to 14.2 offences in the current quarter. This represents a 10.7% decrease in property crime rate per 1,000 population and another 11.6% decrease when compared to the 16.0 offences per 1,000 population that were reported last quarter.

### Violent Crime

The violent crime rate decreased from 3.0 offences per 1,000 population in the same quarter the year prior to 2.9 offences per 1,000 population this quarter which represents a decrease of 4.2% in crimes against persons. This Key Performance Indicator also experienced a decrease of 9.9% of crimes against persons when compared to the 3.2 offences per 1,000 population last quarter.

### Clearance Rates

The clearance rates for property crimes increased slightly from 10.2% to 10.4% of offences cleared by charge when compared to the same quarter the year prior. There was very little change in founded not cleared offences as these clearance rates decreased from 83.8% to 82.3% over the same time period.

Violent crime clearance rates, as they relate to charges, have increased from 32.3% to 34.7% when compared to the same quarter the year prior. By comparison, founded not cleared rates have decreased from 49.9% to 48.2%.

### Traffic Related Injuries & Deaths

Reported traffic related injuries increased from 318 incidents during the fourth quarter of 2008 to 343 incidents this quarter. This is a 7.9% increase in reported injuries and a 1.5% increase when compared to the previous quarter which experienced 338 traffic injuries. Traffic fatalities decreased by 3 incidents when compared to the same time last year, and experienced no change when compared to last quarter.

---

<sup>1</sup> A change in the prioritization of calls for service at E-Comm has created the need to revisit the methodologies used to calculate response times. Response times will thus be temporarily removed from the KPI report until a new methodology can be created and implemented by the Planning, Research and Audit Section.



**Budget Variance**

Budget variance data for the quarter is presented to the Vancouver Police Board through their Finance Committee.

**Annual Citizen Satisfaction Levels**

The 2008 year-end data for this KPI is noted in the Q4 2008 KPI report and was presented at the February 2009 Vancouver Police Board meeting.



---

## INTRODUCTION

---

The Vancouver Police Department's (VPD) 2008-2012 Strategic Plan establishes the VPD's vision of being "Canada's leader in policing – providing safety for all". The Strategic Plan identifies policing priorities that include the following seven operational goals:

- To reduce property crime by 20% by 2012;
- To reduce violent crime by 10% by 2012;
- To suppress violent gang activity;
- To reduce traffic-related injuries and deaths;
- To improve liveability by reducing street disorder;
- To implement best practices for consequence management and emergency preparedness; and,
- To enhance proactive and visible policing.

The establishment of organizational goals is critical, and success can be accurately determined through effective measurement. The VPD and Vancouver Police Board identified Key Performance Indicators (KPIs) that provide a macro-level perspective of organizational performance. A KPI report is produced on a quarterly basis to provide a snapshot of the VPD relative to its primary purpose – public safety.

This KPI Report presents data for the fourth quarter of 2009 (Q4 2009). This quarter is compared to the same quarter the previous year (Q4 2008), and to the preceding quarter (Q3 2009). A description of the data included in this report and the extraction criteria is available in the appendix. The KPIs that will be presented in this report are:

- Property crime rates
- Violent crime rates
- Clearance rates for criminal investigations
- Traffic related injuries and deaths
- Budget variance
- Annual citizen satisfaction survey<sup>2</sup>

---

<sup>2</sup> This KPI will be reported annually at the beginning of each year.





PROPERTY CRIME & CLEARANCE RATES

There were 8,744 incidents of property crime reported to the Vancouver Police Department (VPD) during the fourth quarter of 2009 and 9,765 reported crimes that took place over the same time period last year. This represents a 10.5% decrease in reported property crime. When comparing this quarter's property crimes to last quarter's, there was a decrease of 11.6% for this crime type where 9,891 reported crimes against property occurred (see Table 1).

The property crime rate decreased from 15.9 offences per 1,000 population in the same quarter last year to 14.2 offences in the current quarter. This represents a 10.7% decrease in property crime rate per 1,000 population and another decrease of 11.6% when compared to the 16.0 offences per 1,000 population reported last quarter (see Table 2).

Table 1: Number of Reported Property Crimes

Table with 6 columns: District, Last Year (Q4 2008), Last Quarter (Q3 2009), Current (Q4 2009), Last Year % Change, Last Quarter % Change. Rows include District 1-4 and Total.

Table 2: Quarterly Property Crime Rates per 1,000 Population

Table with 6 columns: Crime Rate (Last Year, Last Quarter, Current), % Change (Last Year, Last Quarter). Row includes Total.

Table 3 shows property crime clearance rates 'Cleared by Charge' have slightly increased from 10.2% to 10.4% when compared to the same quarter last year. 'Founded not Cleared' rates have slightly decreased from 83.8% to 82.3% over the same time period.

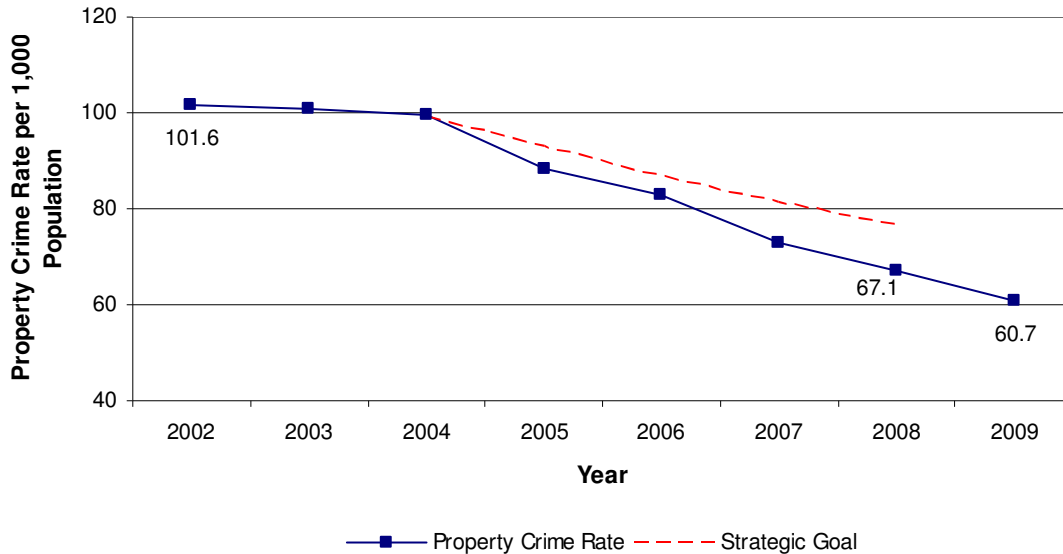
Table 3: Property Crime Clearance Rates

Table with 4 columns: Clearance Type, Last Year (Q4 2008), Last Quarter (Q3 2009), Current (Q4 2009). Rows include Charged, Cleared by Other Means, Founded Not Cleared, Unfounded.



The property crime rate has experienced seven consecutive annual decreases. *Figure 1* shows that the crime rate has declined from 101.6 reported crimes per 1,000 population in 2002 to a low of 60.7 reported property crimes per 1,000 population in 2009. The dashed line represents a 20% reduction in property crimes over a five year period, a goal set and achieved within the 2004-2008 Strategic Plan timeframe.

Figure 1: Annual Property Crime Rate per 1,000 Population



There has been a 40.3% decrease in property crime rate since 2002. This decrease is largely attributed to all areas of property crime with the exception of Fraud in which the crime rate increased 21.3% when comparing 2002 to 2009 rates (see *Table 4*).

Table 4: 2002 to 2009 Property Crime Rate per 1,000 Population

Property Crime	Crime Rate		% Change
	2002	2009	2002-2009
<b>Property Crime</b>	<b>101.6</b>	<b>60.7</b>	<b>-40.3%</b>
B&E - Total	17.8	8.9	-50.0%
Business	5.1	3.1	-39.9%
Residence	11.1	4.6	-58.1%
Other	1.6	1.2	-26.3%
Theft - MV	11.9	4.0	-66.6%
Theft (over/under \$5000)	55.5	34.8	-37.3%
Have Stolen Goods	3.2	1.9	-40.0%
Fraud	2.8	3.4	21.3%
Arson	0.5	0.3	-27.1%
Mischief (over/under \$5000)	10.0	7.4	-26.2%



VIOLENT CRIME & CLEARANCE RATES

There were 1,790 violent crimes against persons reported this quarter. This represents a decrease of 4.0% when compared to the 1,864 offences reported over the same period last year and a 9.9% decrease when compared to last quarter where 1,987 incidents were reported (see Table 5).

The current quarter's violent crime rate experienced a 4.2% decrease per 1,000 population when compared to the fourth quarter of 2008 and 9.9% decrease when compared to last quarter (see Table 6).

Table 5: Number of Reported Violent Crimes

	Quarterly Statistics			% Change	
	Last Year (Q4 2008)	Last Quarter (Q3 2009)	Current (Q4 2009)	Last Year	Last Quarter
District 1	505	526	495	-2.0%	-5.9%
District 2	686	764	655	-4.5%	-14.3%
District 3	433	414	390	-9.9%	-5.8%
District 4	240	283	250	4.2%	-11.7%
<b>Total</b>	<b>1,864</b>	<b>1,987</b>	<b>1,790</b>	<b>-4.0%</b>	<b>-9.9%</b>

Table 6: Quarterly Violent Crime Rates per 1,000 Population

	Crime Rate			% Change	
	Last Year (Q4 2008)	Last Quarter (Q3 2009)	Current (Q4 2009)	Last Year	Last Quarter
Total	3.0	3.2	2.9	-4.2%	-9.9%

Table 7 shows violent crime clearance rates, as they relate to "Cleared by Charge", increased from 32.3% to 34.7% when compared to the same quarter last year and increased from 30.4% when compared to last quarter. "Founded not Cleared" rates have decreased from 49.9% to 48.2% when compared to last year and decreased since last quarter which returned a 53.2% clearance rate.

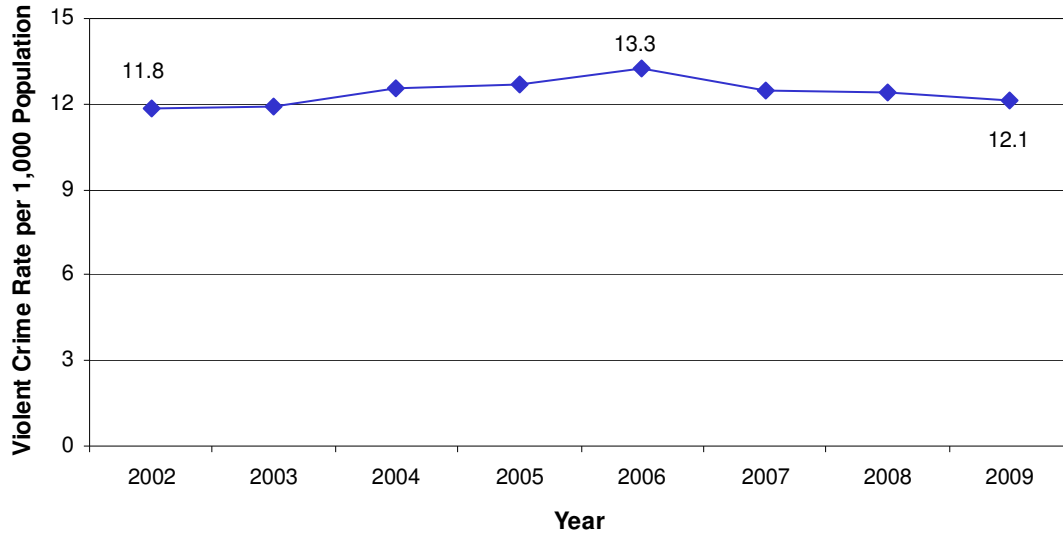
Table 7: Violent Crime Clearance Rates

Clearance Type	Last Year (Q4 2008)	Last Quarter (Q3 2009)	Current (Q4 2009)
Charged	32.3%	30.4%	34.7%
Cleared by Other Means	10.8%	9.3%	10.1%
Founded Not Cleared	49.9%	53.2%	48.2%
Unfounded	7.1%	7.1%	7.0%



Violent crime data shows that the crime rate reached a high of 13.3 incidents per 1,000 population in 2006, and decreased three consecutive years to 12.1 in 2009. *Figure 2* shows the annual violent crime rate from 2002 to 2009.

Figure 2: Annual Violent Crime Rate per 1,000 Population



Since 2002, violent crime rates have remained relatively stable. The increase in crime rate can be mostly attributed to assaults (not culpable homicide as small numbers make large percentage changes). The crime rate for assaults has increased from 7.7 crimes to 9.0 violent crimes per 1,000 population when comparing 2002 to 2009 rates which is a 16.4% increase in crime rate (see *Table 8*).

Table 8: 2002 to 2009 Violent Crime Rate per 1,000 Population

	Crime Rate		% Change
	2002	2009	2002-2009
<b>Violent Crime<sup>3</sup></b>	<b>11.8</b>	<b>12.1</b>	<b>2.6%</b>
Culpable Homicide	0.0	0.0	13.2%
Attempted Murder	0.0	0.0	-37.8%
Sexual Offences	0.9	0.9	3.0%
Assaults	7.7	9.0	16.4%
Robbery	3.1	2.2	-30.9%

<sup>3</sup> Crime rate is calculated as the ratio of reported crimes compared to the population in a particular area and, for this table, is expressed per 1,000 population. Crime types reflecting a crime rate of 0.0 means less than 0.1 people out of every 1,000 population are at risk of being a victim of the particular crime type.



### TRAFFIC RELATED INJURIES AND DEATHS

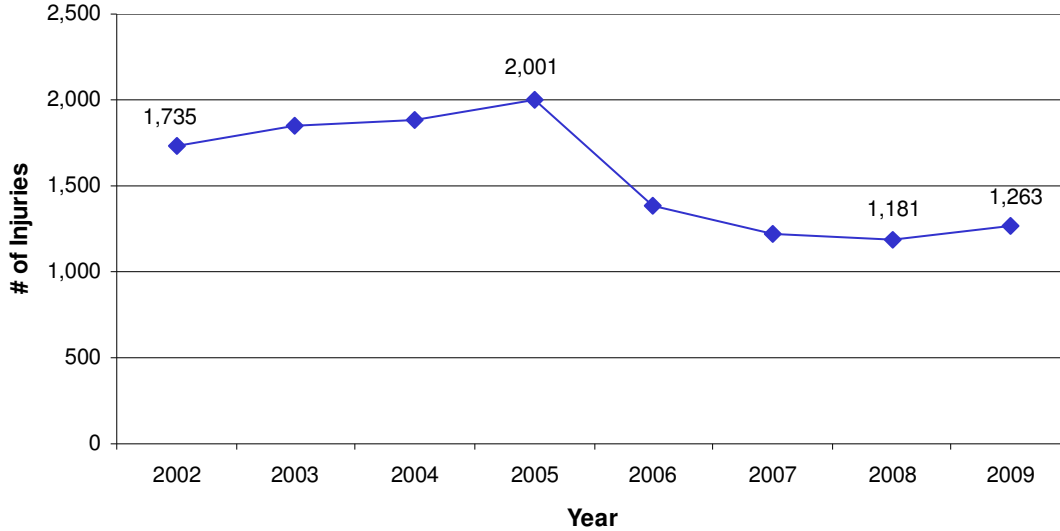
Traffic offences are collected under the categories of Motor Vehicle Accidents (MVAs) resulting in injuries or death. *Table 10* shows that reported traffic injuries have increased 1.5% since the previous quarter and increased 7.9% when compared to the same quarter last year.

Table 9: Traffic Related Injuries

	Last Year (Q4 2008)	Last Quarter (Q3 2009)	Current (Q4 2009)	% Change	
				Last Year	Last Quarter
Traffic Injuries	318	338	343	7.9%	1.5%

Since 2005, the number of MVAs resulting in injuries significantly dropped from 2,001 offences to 1,181 in 2008. *Figure 4* shows that in 2009, there were 1,263 MVAs resulting in injuries that were reported to the VPD. By comparison, this is a 6.9% increase in injuries from 2008.

Figure 3: Motor Vehicle Accidents with Injuries





As depicted in *Table 11*, there were 3 fewer fatalities this quarter when compared to the same quarter last year and no change when compared to the last quarter<sup>4</sup>.

*Table 10: Traffic Related Fatalities*

	Last Year (Q4 2008)	Last Quarter (Q3 2009)	Current (Q4 2009)
Traffic Fatalities	6	3	3

<sup>4</sup> Percent changes were not included in the tables as the overall small number of total fatalities cause any change to result in percentage changes that appear significant but should not be interpreted as such.



---

## APPENDIX

---

### Data

The data for this report is obtained from the PRIME records management system. Crime statistics at the VPD are reported using the 'all offences method', which captures all of the offences associated with an incident. A reported incident may include up to four separate offences.

The crime statistics noted in this report reflect the raw reported crime counts based on the all offence method (where one incident can represent more than one crime) as well as cases cleared as unfounded to more accurately represent workload by members.

Crime rates are calculated per 1,000 population. BC Statistics cites Vancouver's 2008 population to be 615,4735. The population for 2009 has been projected as 617,233 using a 5-year average percentage population growth in Vancouver.

*Property crime* includes the following offences:

- Break and Enter
- Thefts over/under \$5000
- Theft of Motor Vehicle
- Theft from Motor Vehicle
- Have Stolen Goods
- Fraud
- Mischief

*Violent crime* includes the following offences:

- Culpable Homicide
- Attempted Murder
- Sex Offence<sup>6</sup>
- Assault
- Robbery

*Clearance Rates* describe the status of an incident. An incident can be cleared either as founded or unfounded.

---

<sup>5</sup> BC Stats as of April 3<sup>rd</sup>, 2009.

<sup>6</sup> On September 9<sup>th</sup>, 2008, Versadex was updated to reflect the changes brought about by Statistics Canada. Sex Offence crimes now include Luring a Child via Computer as well as Voyeurism.



Founded:

- *Cleared by Charge:* A charge has been laid or is recommended to be laid against a suspect in connection with the incident.
- *Cleared by Other Means:* A suspect has been identified in connection with the incident but is processed by another means.
- *Founded but not Cleared:* A suspect has not been identified in connection with the incident.

Unfounded

- *Unfounded:* No violation of the law took place.





**VANCOUVER POLICE DEPARTMENT** | *Beyond the Call*

**KEY PERFORMANCE INDICATORS**

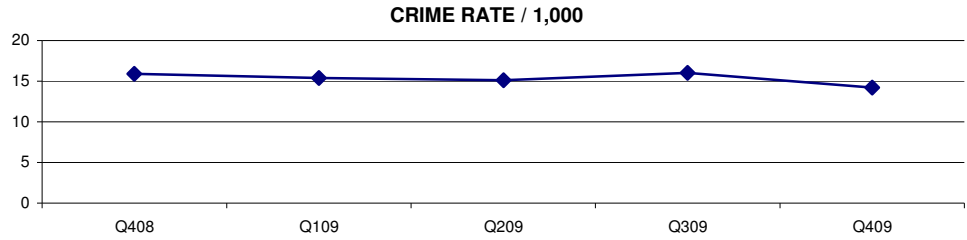
PROPERTY CRIME	QUARTERLY STATISTICS			% CHANGE		CRIME RATE / 1,000			% CHANGE	
	Q408	Q309	Q409	Q408	Q309	Q408	Q309	Q409	Q408	Q309
DISTRICT 1	2,994	3,165	2,642	-11.8%	-16.5%					
DISTRICT 2	2,072	2,019	1,756	-15.3%	-13.0%					
DISTRICT 3	2,098	2,068	2,008	-4.3%	-2.9%					
DISTRICT 4	2,601	2,639	2,338	-10.1%	-11.4%					
<b>TOTAL</b>	<b>9,765</b>	<b>9,891</b>	<b>8,744</b>	<b>-10.5%</b>	<b>-11.6%</b>	<b>15.9</b>	<b>16.0</b>	<b>14.2</b>	<b>-10.7%</b>	<b>-11.6%</b>
	<b>% CLEARED</b>					<b>QUARTERLY STATISTICS</b>				
PROPERTY CLEARANCE TYPE	Q408	Q309	Q409	Q408	Q309	Q408	Q309	Q409	Q408	Q309
UNFOUNDED	2.0%	1.9%	2.0%	1.4%	3.1%	193	192	175	-9.3%	-8.9%
FOUNDED NOT CLEARED	83.8%	82.5%	82.3%	-1.7%	-0.2%	8198	8161	7205	-12.1%	-11.7%
CHARGED	10.2%	10.4%	10.4%	2.2%	-0.3%	996	1032	910	-8.6%	-11.8%
CLEARED BY OTHER MEANS	4.1%	5.2%	5.3%	29.2%	1.8%	398	511	460	15.6%	-10.0%
	<b>QUARTERLY STATISTICS</b>					<b>CRIME RATE / 1,000</b>				
VIOLENT CRIME	Q408	Q309	Q409	Q408	Q309	Q408	Q309	Q409	Q408	Q309
DISTRICT 1	505	526	495	-2.0%	-5.9%					
DISTRICT 2	686	764	655	-4.5%	-14.3%					
DISTRICT 3	433	414	390	-9.9%	-5.8%					
DISTRICT 4	240	283	250	4.2%	-11.7%					
<b>TOTAL</b>	<b>1,864</b>	<b>1,987</b>	<b>1,790</b>	<b>-4.0%</b>	<b>-9.9%</b>	<b>3.0</b>	<b>3.2</b>	<b>2.9</b>	<b>-4.2%</b>	<b>-9.9%</b>
	<b>% CLEARED</b>					<b>QUARTERLY STATISTICS</b>				
VIOLENT CLEARANCE TYPE	Q408	Q309	Q409	Q408	Q309	Q408	Q309	Q409	Q408	Q309
UNFOUNDED	7.1%	7.1%	7.0%	-0.4%	-0.9%	132	141	126	-4.5%	-10.6%
FOUNDED NOT CLEARED	49.9%	53.2%	48.2%	-3.4%	-9.4%	933	1,058	864	-7.4%	-18.3%
CHARGED	32.3%	30.4%	34.7%	7.4%	14.1%	603	604	621	3.0%	2.8%
CLEARED BY OTHER MEANS	10.8%	9.3%	10.1%	-6.1%	8.5%	201	185	181	-10.0%	-2.2%
	<b>QUARTERLY STATISTICS</b>					<b>CRIME RATE / 1,000</b>				
TRAFFIC STATISTICS	Q408	Q309	Q409	Q408	Q309	Q408	Q309	Q409	Q408	Q309
TRAFFIC INJURIES	318	338	343	7.9%	1.5%					
TRAFFIC FATALITIES	6	3	3							

A change in the prioritization of calls for service at E-Comm has created the need to revisit the methodologies used to calculate response times. Response times will thus be temporarily removed from the KPI report until a new methodology can be created and implemented by the Planning, Research and Audit Section.



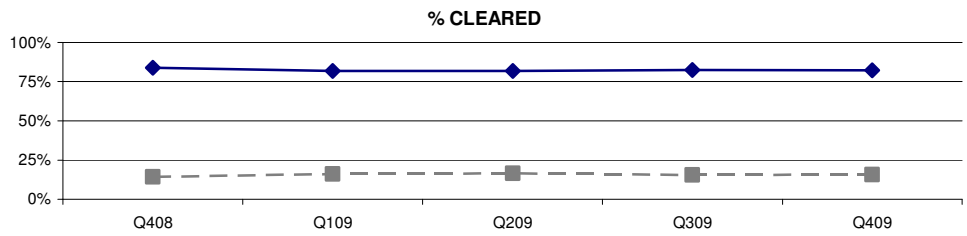
**PROPERTY CRIME**

TOTAL



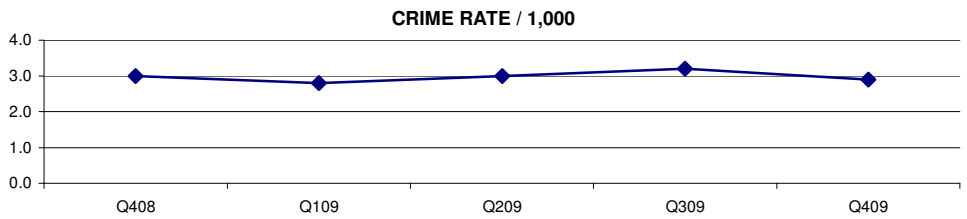
**PROPERTY CLEARANCE TYPE\***

NOT CLEARED  
CLEARED ( - - - )



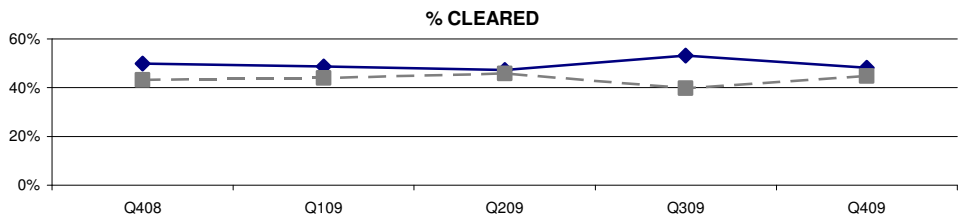
**VIOLENT CRIME**

TOTAL



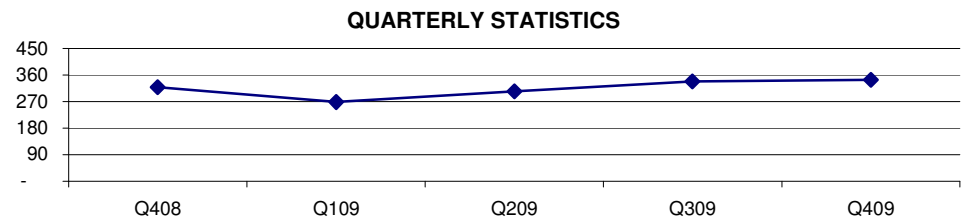
**VIOLENT CLEARANCE TYPE\***

NOT CLEARED  
CLEARED ( - - - )



**TRAFFIC STATISTICS**

TRAFFIC INJURIES



\* Cleared includes Charged and Cleared by Other Means