



ARCHIVED - Archiving Content

Archived Content

Information identified as archived is provided for reference, research or recordkeeping purposes. It is not subject to the Government of Canada Web Standards and has not been altered or updated since it was archived. Please contact us to request a format other than those available.

ARCHIVÉE - Contenu archivé

Contenu archivé

L'information dont il est indiqué qu'elle est archivée est fournie à des fins de référence, de recherche ou de tenue de documents. Elle n'est pas assujettie aux normes Web du gouvernement du Canada et elle n'a pas été modifiée ou mise à jour depuis son archivage. Pour obtenir cette information dans un autre format, veuillez communiquer avec nous.

This document is archival in nature and is intended for those who wish to consult archival documents made available from the collection of Public Safety Canada.

Some of these documents are available in only one official language. Translation, to be provided by Public Safety Canada, is available upon request.

Le présent document a une valeur archivistique et fait partie des documents d'archives rendus disponibles par Sécurité publique Canada à ceux qui souhaitent consulter ces documents issus de sa collection.

Certains de ces documents ne sont disponibles que dans une langue officielle. Sécurité publique Canada fournira une traduction sur demande.

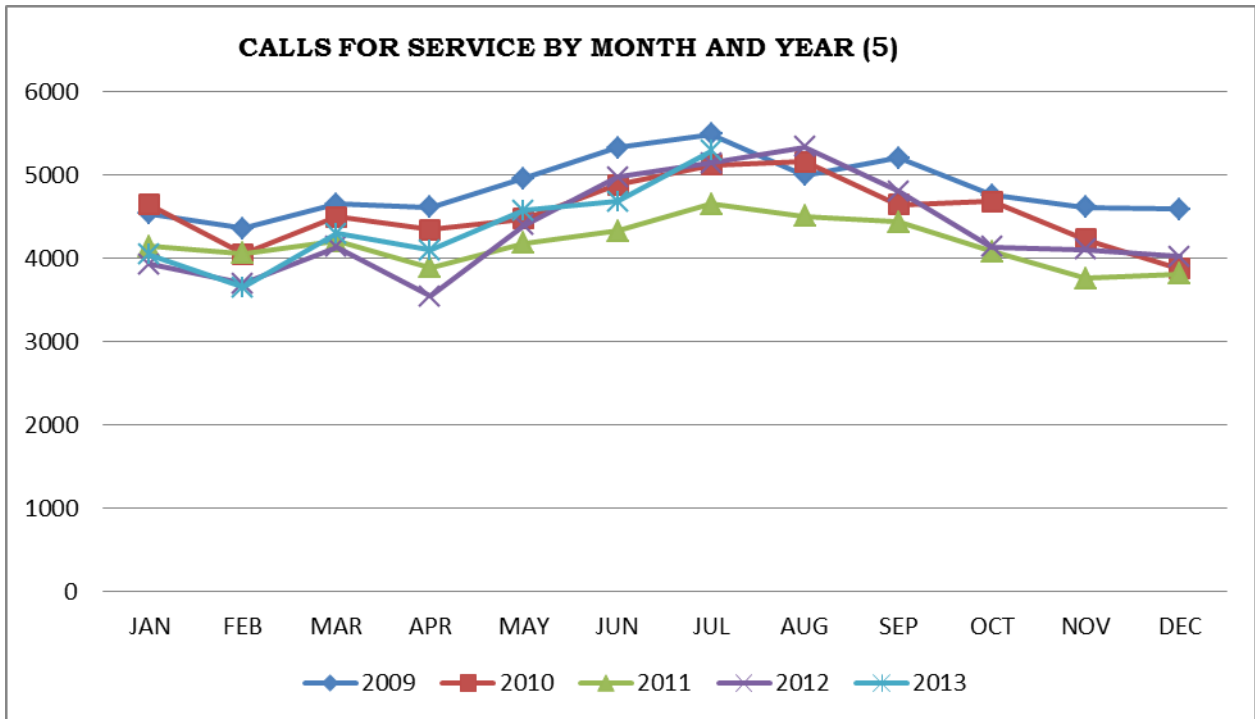
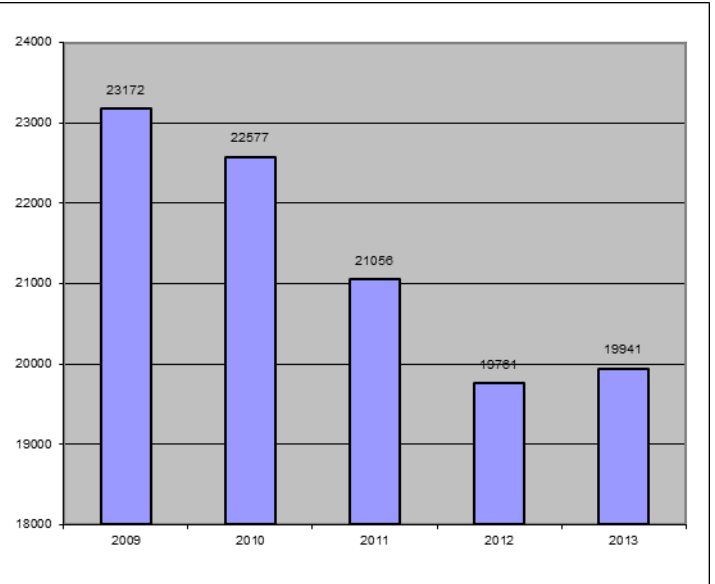
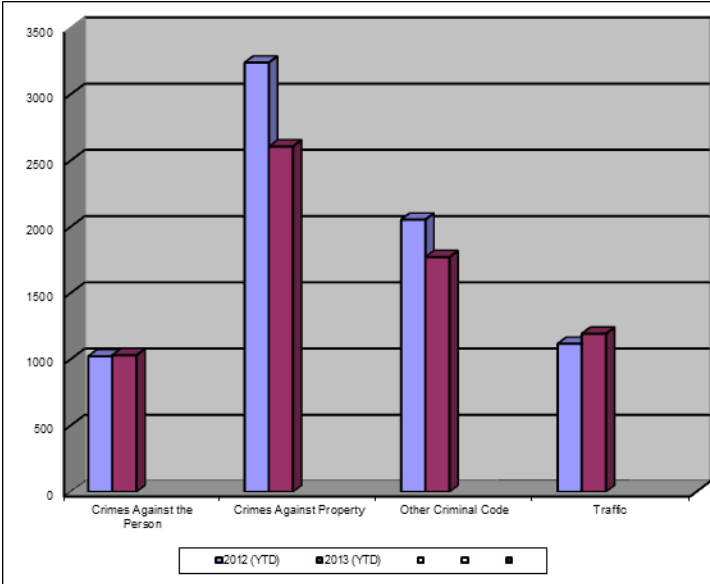


**VICTORIA
POLICE**

Crime Trends for Victoria and Esquimalt: January - July , 2012-2013 (1,2)

Key Crime Trends (1, 2)

Reported Calls for Service YTD(Annual)(5)





Crime Trends for Victoria and Esquimalt: January – July , 2012–2013 (1,2)

Key Crime Trends (YTD- January-July)

	2012		2013		% Change 2012 - 2013(4)
	Jan-July	Rate(3)	Jan-July	Rate(3)	
Crime Against the Person	1023	1071.2	1032	1080.6	0.9
Crimes Against Property	3241	3393.8	2608	2730.9	-19.5
Other Criminal Code of Canada Offences	2055	2151.9	1773	1856.6	-13.7
Total CCC Offences Excluding Traffic	6319	6616.8	5413	5668.1	-14.3
Traffic Offences	1118	1170.7	1194	1250.3	6.8
Total CCC Offences and Traffic	7437	7787.5	6607	6918.4	-11.2

Crimes Against Person (YTD January- July)

	2012		2013		% Change 2012 - 2013(4)
	Jan-July	Rate(3)	Jan-July	Rate(3)	
Homicide	0	0.0	0	0.0	-
Attempted Murder	1	1.0	1	1.0	-
Robbery/Extortion	83	86.9	62	64.9	-25.3
Assault	687	719.4	693	725.7	0.9
Sexual Assault	50	52.4	57	59.7	14.0
Criminal Harassment	42	44.0	40	41.9	-4.8
Uttering Threats	159	166.5	178	186.4	11.9
Arson - Disregard for Life	1	1.0	1	1.0	0.0

Notes:

1. The data presented is taken from the Police Records Information Management Environment (PRIME) database.
2. The crime statistics published in this report are based on the day that they were analyzed. Due to ongoing police investigation and internal data quality control efforts, this information is subject to change, including addition, deletion and reclassification of any and all data. Rates and percentages have been rounded.
3. Rate is calculated on a per 100,000 rate for each month and year. As provided by Capital Region District, the 2012 and 2013 population is estimated at 100,657.
4. The % change is based on the actual values and is subject to (2).
5. As of April 2012, Victoria Police now record all abandoned 911 calls (e.g. “pocket dials”) when calculating total calls for service. They are dispatched as Priority 2 calls.
6. The line graph on page 1 and the table on page 4 are reflective of those 911 calls (“pocket dials”) not previously captured.



**VICTORIA
POLICE**

Crime Trends for Victoria and Esquimalt: January – July , 2012–2013 (1,2)

Crimes Against Property (YTD January- July)

		2012 (5,6)		2013		% Change 2012 - 2013(4)
		Jan-July	Rate(3)	Jan-July	Rate(3)	
B&E Business		141	147.6	115	120.4	-18.4
B&E-Other		159	166.5	82	85.9	-48.4
B&E-Residence		201	210.5	146	152.9	-27.4
Fraud		189	197.9	193	202.1	2.1
Possession of Stolen Property/Break and Enter Tools		42	44.0	46	48.2	9.5
Theft Over \$5000		14	14.7	12	12.6	-14.3
Theft Under \$5000		613	641.9	564	590.6	-8.0
Theft from Motor Vehicle		876	917.3	605	633.5	-30.9
Theft of Motor Vehicle		119	124.6	60	62.8	-49.6
Take Vehicle without Consent		8	8.4	4	4.2	-50.0
Theft of Bicycle		247	258.6	273	285.9	10.5
Shoplifting		618	647.1	497	520.4	-19.6
Arson		5	5.2	9	9.4	80.0

Other Criminal Code Offences (YTD January- July)

		2012		2013		% Change 2012 - 2013(4))
		Jan-July	Rate(3)	Jan-July	Rate(3)	
Bail Violations/Breach of Probation		365	382.2	364	381.2	-0.3
Domestic Dispute (No Assault)		452	473.3	428	448.2	-5.3
Drugs		471	493.2	345	361.3	-26.8
Indecent Acts		22	23.0	33	34.6	50.0
Mischief		711	744.5	578	605.2	-18.7
Offensive Weapons		56	58.6	58	60.7	3.6

Traffic Offences (YTD January- July)

		2012		2013		% Change 2012 - 2013(4)
		Jan-July	Rate(3)	Jan-July	Rate(3)	
Traffic - Collisions		431	451.3	491	514.1	13.9
Traffic - Fatal		1	1.0	2	2.1	-
Traffic - Other		375	392.7	432	452.4	15.2
Dangerous Operation of Motor Vehicle		6	6.3	3	3.1	-
Fail to Remain		81	84.8	80	83.8	-1.2
Impaired/Refuse		114	119.4	186	194.8	63.2



**VICTORIA
POLICE**

Crime Trends for Victoria and Esquimalt: January – July , 2012–2013 (1,2)

Calls for Service (YTD January- July)

	2012				Vic	2013				% Change 2012 - 2013(4)
	Vic	% of Total	Esq	% of Total		% of Total	Esq	% of Total		
Priority 1: Emergency, dispatch immediate, high probability of death or grievous bodily harm	1662	83.4	332	16.6	1651	83.7	322	16.3	-0.6	
Priority 2: Urgent, dispatch immediate, not life threatening in nature	5562	88.8	700	11.2	5370	89.7	615	10.3	-4.0	
Priority 3: Routine: non-urgent	10441	89.7	1195	10.3	10913	90.1	1200	9.9	4.3	
Priority 4: May or may not be dispatched, dependent on agency	6314	90.0	698	10.0	5748	90.5	606	9.5	-9.2	
Other Alternative	13	100.0		0.0	12	85.7	2	14.3	7.7	
Total - All Priorities	23992	89.1	2925	10.9	23694	89.6	2745	10.4	-1.5	

****Please Note** - the above table was calculated according to Municipality with only Victoria and Esquimalt calls calculated. The table below was calculated according to Neighbourhood. The 'Grand Total' includes all calls attended notwithstanding jurisdiction. As a result the numbers may not correspond.

*****Please Note** – Calls coded as Priority 2 “Abandoned 911” received at 850 Caledonia have been removed from both the above chart and below chart.



**VICTORIA
POLICE**

Crime Trends for Victoria and Esquimalt: January – July , 2012–2013 (1,2)

Calls for Service by Priority and Neighbourhood (July)

<i>Neighbourhood</i>	<i>Priority 1</i>	<i>Priority 2</i>	<i>Priority 3</i>	<i>Priority 4</i>	<i>Other</i>	<i>Total</i>	<i>% of Total City</i>	<i>% of Grand total</i>
COLVILLE	7	15	31	34		87	3.2	0.3
DEVONSHIRE	17	20	76	31		144	5.2	0.5
DN1		1	1	1		3	0.1	0.0
ESQUIMALT VILLAGE	80	189	331	178		778	28.3	2.9
PANHANDLE	19	44	75	33		171	6.2	0.6
PARKLANDS	12	17	32	16	1	78	2.8	0.3
ROCKHEIGHTS	57	67	145	55	1	325	11.8	1.2
SAXE POINT	18	38	94	57		207	7.5	0.8
SELKIRK	23	54	87	50		214	7.8	0.8
WEST BAY	89	168	331	152		740	26.9	2.8
TANK FARM	0	0	0	0	0	0	0.0	0.0
ESQUIMALT TOTAL	322	613	1203	607	2	2747	100.0	10.3
BURNSIDE GORGE	370	1007	1931	992		4300	18.1	16.1
DOWNTOWN	254	1305	2681	1289	1	5530	23.3	20.7
FAIRFIELD	100	305	693	353	3	1454	6.1	5.5
FERNWOOD	138	316	642	320		1416	6.0	5.3
GONZALES	25	44	96	80		245	1.0	0.9
HARRIS GREEN	98	390	793	314		1595	6.7	6.0
HILLSIDE QUADRA	154	354	661	292	1	1462	6.2	5.5
JAMES BAY	128	431	612	403	1	1575	6.6	5.9
NORTH JUBILEE	29	66	136	67		298	1.3	1.1
NORTH PARK	131	355	1289	937	4	2716	11.4	10.2
OAKLANDS	70	217	398	218	1	904	3.8	3.4
ROCKLAND	25	72	108	67		272	1.1	1.0
SOUTH JUBILEE	28	259	355	140		782	3.3	2.9
VIC WEST	100	248	508	273	1	1130	4.8	4.2
UNKNOWN	3	5	50	20		78	0.3	0.3
VICTORIA TOTAL	1653	5374	10953	5765	12	23757	100.0	89.1
GRAND TOTAL	1995	6049	12224	6393	10	26676		100.0