



ARCHIVED - Archiving Content

Archived Content

Information identified as archived is provided for reference, research or recordkeeping purposes. It is not subject to the Government of Canada Web Standards and has not been altered or updated since it was archived. Please contact us to request a format other than those available.

ARCHIVÉE - Contenu archivé

Contenu archivé

L'information dont il est indiqué qu'elle est archivée est fournie à des fins de référence, de recherche ou de tenue de documents. Elle n'est pas assujettie aux normes Web du gouvernement du Canada et elle n'a pas été modifiée ou mise à jour depuis son archivage. Pour obtenir cette information dans un autre format, veuillez communiquer avec nous.

This document is archival in nature and is intended for those who wish to consult archival documents made available from the collection of Public Safety Canada.

Some of these documents are available in only one official language. Translation, to be provided by Public Safety Canada, is available upon request.

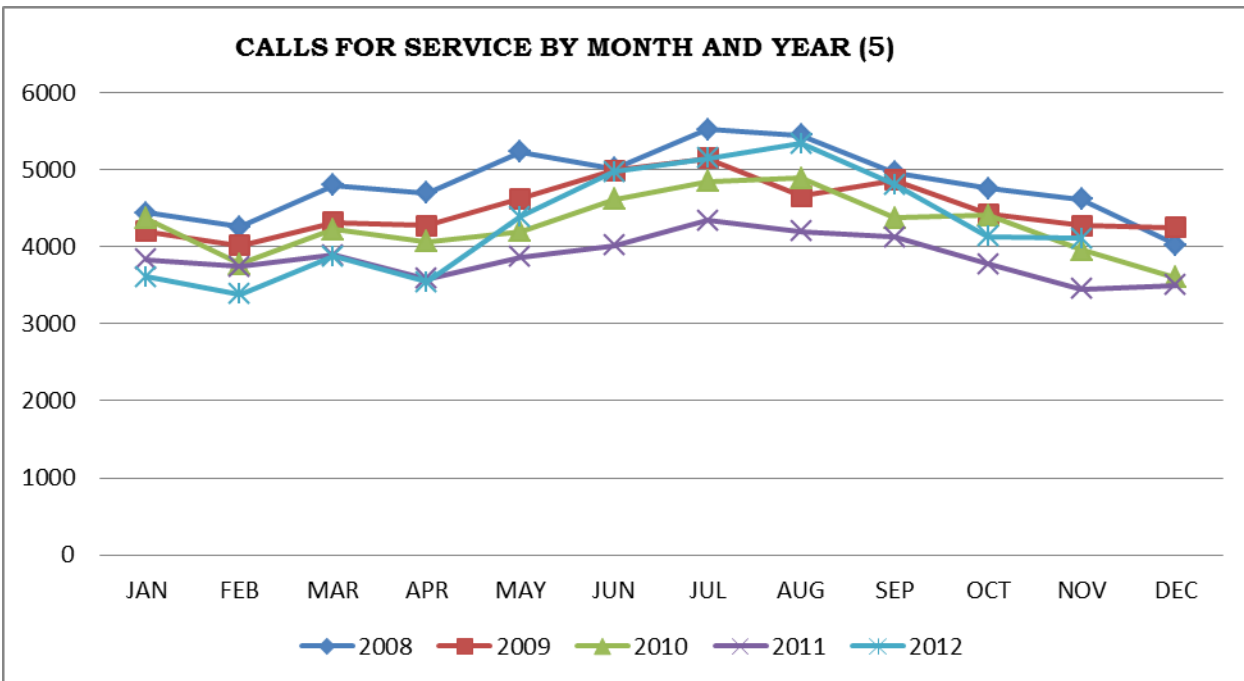
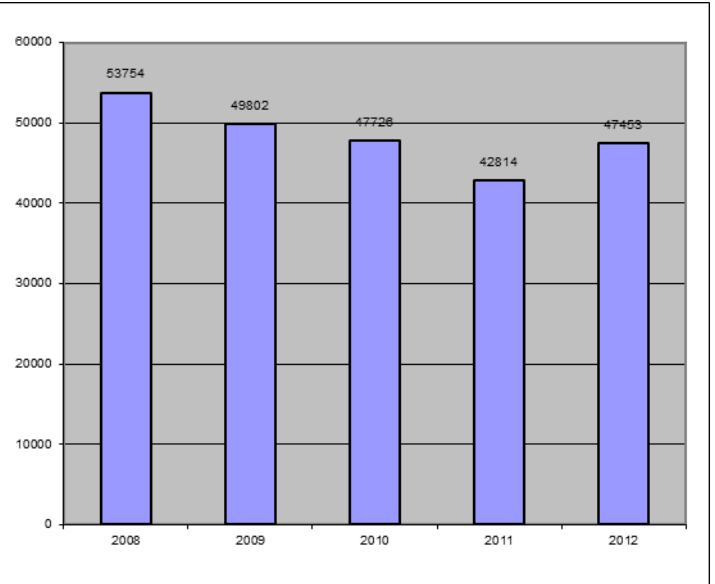
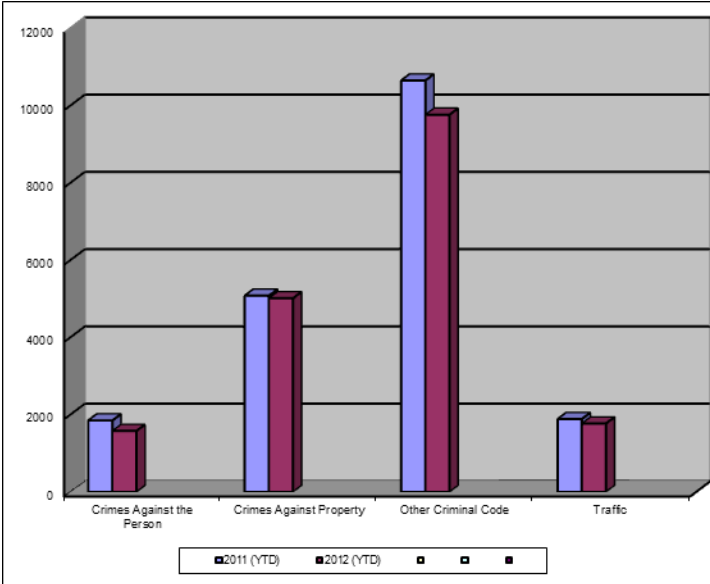
Le présent document a une valeur archivistique et fait partie des documents d'archives rendus disponibles par Sécurité publique Canada à ceux qui souhaitent consulter ces documents issus de sa collection.

Certains de ces documents ne sont disponibles que dans une langue officielle. Sécurité publique Canada fournira une traduction sur demande.

Crime Trends for Victoria and Esquimalt: January - November, 2011 - 2012 (1, 2)

Key Crime Trends

Total Calls for Service (Annual)(5)



Key Crime Trends (YTD- January - November)

	2011		2012		% Change 2011 - 2012(4)
	Jan-Nov	Rate(3)	Jan-Nov	Rate(3)	
Crime Against the Person	1848	1935.1	1578	1652.4	-14.6
Crimes Against Property	5077	5316.3	5011	5247.2	-1.3
Other Criminal Code of Canada Offences	3722	3897.4	3173	3322.5	-14.8
Total CCC Offences Excluding Traffic	10647	11148.8	9762	10222.1	-8.3
Traffic Offences	1886	1974.9	1769	1852.4	-6.2
Total CCC Offences and Traffic	12533	13123.7	11531	12074.5	-8.0

Crimes Against Person (YTD January - November)

	2011		2012		% Change 2011 - 2012(4)
	Jan-Nov	Rate(3)	Jan-Nov	Rate(3)	
Homicide	3	3.1	1	1.0	-
Attempted Murder	1	1.0	2	2.1	-
Robbery/Extortion	138	144.5	124	129.8	-10.1
Assault	1168	1223.0	1045	1094.3	-10.5
Sexual Assault	88	92.1	75	78.5	-14.8
Criminal Harassment	77	80.6	57	59.7	-26.0
Uttering Threats	374	391.6	273	285.9	-27.0
Arson - Disregard for Life	2	2.1	2	2.1	0.0

Notes:

1. The data presented is taken from the Police Records Information Management Environment (PRIME) database. Data that is coded and analyzed according to the requirements of the violation coding structure for Uniform Crime Reporting (UCR) survey as set up by Statistics Canada.
2. The crime statistics published in this report are accurate on the day that they were analyzed. Due to ongoing police investigation and internal data quality control efforts, this information is subject to change, including addition, deletion and reclassification of any and all data. Rates and percentages have been rounded.
3. Rate is calculated on a per 100,000 rate for each month and year. As provided by Capital Region District, the 2011 and 2012 population is estimated at 100,657.
4. The % change is based on the actual values and is subject to (2).
5. As of April 2012, Victoria Police now record all abandoned 911 calls (e.g. "pocket dials") when calculating total calls for service.

Crimes Against Property (YTD January - November)

		2011		2012		% Change 2011 - 2012(4)
		Jan-Nov	Rate(3)	Jan-Nov	Rate(3)	
B&E Business		189	197.9	216	226.2	14.3
B&E-Other		149	156.0	202	211.5	35.6
B&E-Residence		287	300.5	325	340.3	13.2
Fraud		380	397.9	264	276.4	-30.5
Possession of Stolen Property/Break and Enter Tools		72	75.4	76	79.6	5.6
Theft Over \$5000		17	17.8	24	25.1	41.2
Theft Under \$5000		855	895.3	992	1038.8	16.0
Theft from Motor Vehicle		1724	1805.3	1345	1408.4	-22.0
Theft of Motor Vehicle		124	129.8	185	193.7	49.2
Take Vehicle without Consent		7	7.3	8	8.4	14.3
Theft of Bicycle		310	324.6	433	453.4	39.7
Shoplifting		947	991.6	918	961.3	-3.1
Arson		16	16.8	23	24.1	43.8

Other Criminal Code Offences (YTD January - November)

		2011		2012		% Change 2011 - 2012(4)
		Jan-Nov	Rate(3)	Jan-Nov	Rate(3)	
Bail Violations/Breach of Probation		485	507.9	573	600.0	18.1
Domestic Dispute		778	814.7	703	736.1	-9.6
Drugs		861	901.6	718	751.8	-16.6
Indecent Acts		89	93.2	38	39.8	-57.3
Mischief		1361	1425.1	1061	1111.0	-22.0
Offensive Weapons		148	155.0	80	83.8	-45.9

Traffic Offences (YTD January - November)

		2011		2012		% Change 2011 - 2012(4)
		Jan-Nov	Rate(3)	Jan-Nov	Rate(3)	
Traffic - Collisions		544	569.6	563	589.5	3.5
Traffic - Fatal		1	1.0	3	3.1	-
Traffic - Other		515	539.3	619	648.2	20.2
Dangerous Operation of Motor Vehicle		7	7.3	9	9.4	28.6
Fail to Remain		180	188.5	124	129.8	-31.1
Impaired/Refuse		383	401.1	303	317.3	-20.9

Calls for Service (YTD January - November)

					2011				2012				% Change 2011 - 2012(4)
					Vic	% of Total	Esq	% of Total	Vic	% of Total	Esq	% of Total	
Priority 1: Emergency, dispatch immediate, high probability of death or grievous bodily harm					2771	84.3	516	15.7	2601	83.6	512	16.4	-5.2
Priority 2: Urgent, dispatch immediate, not life threatening in nature					8215	88.7	1044	11.3	13637	92.7	1069	7.3	58.8
Priority 3: Routine: non-urgent					16496	90.6	1715	9.4	16360	89.8	1866	10.2	0.7
Priority 4: May or may not be dispatched, dependent on agency					10806	91.4	1018	8.6	9817	89.7	1126	10.3	-6.9
Other Alternative					7	77.8	2	22.2	22	100.0		0.0	144.4
Total - All Priorities					38295	89.9	4295	10.1	42437	90.3	4573	9.7	10.8

**Please Note the above table was calculated according to Municipality with only Victoria and Esquimalt calls calculated. The table below was calculated according to Neighbourhood. The 'Grand Total' includes all calls attended notwithstanding jurisdiction. As a result the numbers may not correspond.

Calls for Service by Priority and Neighbourhood (January - November)

<i>Neighbourhood</i>	<i>Priority 1</i>	<i>Priority 2</i>	<i>Priority 3</i>	<i>Priority 4</i>	<i>Other</i>	<i>Total</i>	<i>% of Total City</i>	<i>% of Grand total</i>
COLVILLE	19	40	86	45		190	4.2	0.4
DEVONSHIRE	30	56	105	73		264	5.8	0.6
DN1		6	4	5		15	0.3	0.0
ESQUIMALT VILLAGE	139	337	593	329		1398	30.7	2.9
PANHANDLE	20	91	115	72		298	6.5	0.6
PARKLANDS	25	22	68	40		155	3.4	0.3
ROCKHEIGHTS	73	100	191	92		456	10.0	1.0
SAXE POINT	26	52	136	100		314	6.9	0.7
SELKIRK	51	124	176	130		481	10.6	1.0
WEST BAY	129	225	394	240		988	21.7	2.1
TANK FARM	0	0	0	0		0	0.0	0.0
ESQUIMALT TOTAL	512	1053	1868	1126		4559	100.0	9.6
BURNSIDE GORGE	517	1535	2683	1383	3	6121	14.4	12.9
DOWNTOWN	427	2174	3857	2322	3	8783	20.6	18.5
FAIRFIELD	171	498	1081	678	2	2430	5.7	5.1
FERNWOOD	207	482	952	638		2279	5.3	4.8
GONZALES	26	72	186	145	1	430	1.0	0.9
HARRIS GREEN	161	726	1372	644		2903	6.8	6.1
HILLSIDE QUADRA	248	559	1021	514		2342	5.5	4.9
JAMES BAY	219	667	988	611	1	2486	5.8	5.2
NORTH JUBILEE	44	126	199	139		508	1.2	1.1
NORTH PARK	212	5488	1884	1509	10	9103	21.4	19.2
OAKLANDS	153	353	668	385		1559	3.7	3.3
ROCKLAND	24	133	182	153	1	493	1.2	1.0
SOUTH JUBILEE	48	374	419	196		1037	2.4	2.2
VIC WEST	144	439	856	497	1	1937	4.5	4.1
UNKNOWN	1	16	134	52		203	0.5	0.4
VICTORIA TOTAL	2602	13642	16482	9866	22	42614	100.0	89.8
GRAND TOTAL	3141	14818	18435	11037	22	47453		100.0

