



ARCHIVED - Archiving Content

Archived Content

Information identified as archived is provided for reference, research or recordkeeping purposes. It is not subject to the Government of Canada Web Standards and has not been altered or updated since it was archived. Please contact us to request a format other than those available.

ARCHIVÉE - Contenu archivé

Contenu archivé

L'information dont il est indiqué qu'elle est archivée est fournie à des fins de référence, de recherche ou de tenue de documents. Elle n'est pas assujettie aux normes Web du gouvernement du Canada et elle n'a pas été modifiée ou mise à jour depuis son archivage. Pour obtenir cette information dans un autre format, veuillez communiquer avec nous.

This document is archival in nature and is intended for those who wish to consult archival documents made available from the collection of Public Safety Canada.

Some of these documents are available in only one official language. Translation, to be provided by Public Safety Canada, is available upon request.

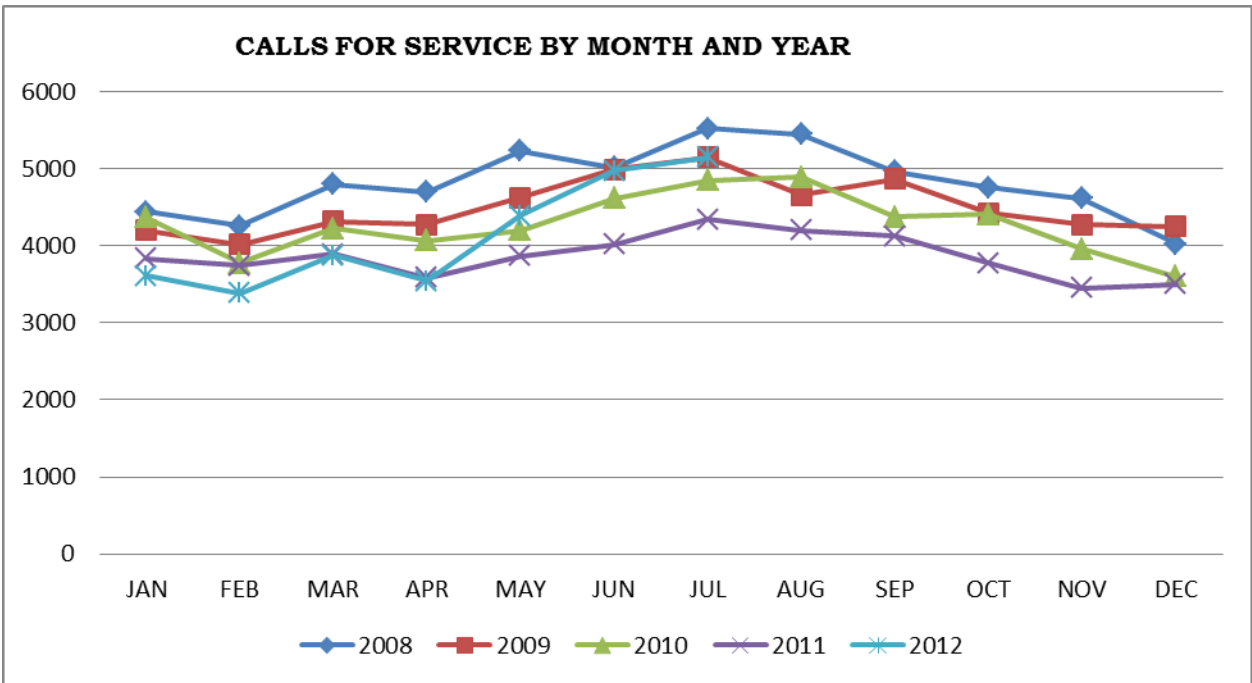
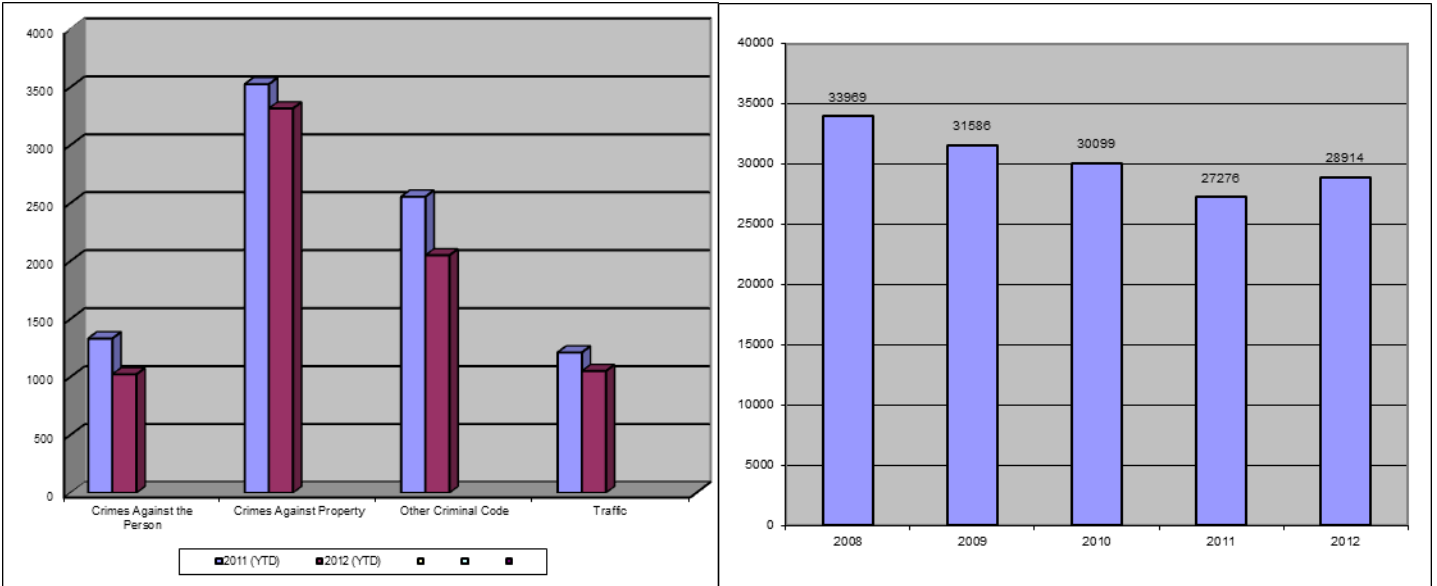
Le présent document a une valeur archivistique et fait partie des documents d'archives rendus disponibles par Sécurité publique Canada à ceux qui souhaitent consulter ces documents issus de sa collection.

Certains de ces documents ne sont disponibles que dans une langue officielle. Sécurité publique Canada fournira une traduction sur demande.

Crime Trends for Victoria and Esquimalt : January - July, 2011 - 2012 (1,2)

Key Crime Trends

Total Calls for Service (Annual)



Key Crime Trends (YTD- January - July)

	2011		2012		% Change 2011 - 2012(4)
	Jan-Jul	Rate(3)	Jan-Jul	Rate(3)	
Crime Against the Person	1332	1394.8	1023	1071.2	-23.2
Crimes Against Property	3526	3692.2	3317	3473.3	-5.9
Other Criminal Code of Canada Offences	2555	2675.4	2050	2146.6	-19.8
Total CCC Offences Excluding Traffic	7413	7762.4	6390	6691.2	-13.8
Traffic Offences	1211	1268.1	1051	1100.5	-13.2
Total CCC Offences and Traffic	8624	9030.5	7441	7791.7	-13.7

Crimes Against Person (YTD January - July)

	2011		2012		% Change 2011 - 2012(4)
	Jan-Jul	Rate(3)	Jan-Jul	Rate(3)	
Homicide	0	0.0	0	0.0	-
Attempted Murder	1	1.0	1	1.0	-
Robbery/Extortion	115	120.4	88	92.1	-23.5
Assault	791	828.3	668	699.5	-15.5
Sexual Assault	82	85.9	58	60.7	-29.3
Criminal Harassment	59	61.8	32	33.5	-45.8
Uttering Threats	281	294.2	174	182.2	-38.1
Arson - Disregard for Life	2	2.1	1	1.0	-50.0

Notes:

1. The data presented is taken from the Police Records Information Management Environment (PRIME) database. Data that is coded and analyzed according to the requirements of the violation coding structure for Uniform Crime Reporting (UCR) survey as set up by Statistics Canada.
2. The crime statistics published in this report are accurate on the day that they were analyzed. Due to ongoing police investigation and internal data quality control efforts, this information is subject to change, including addition, deletion and reclassification of any and all data. Rates and percentages have been rounded.
3. Rate is calculated on a per 100,000 rate for each month and year. As provided by Capital Region District, the 2011 and 2012 population is estimated at 100,657.
4. The % change is based on the actual values and is subject to (2).

Crimes Against Property (YTD January - July)

		2011		2012		% Change 2011 - 2012(4)
		Jan-Jul	Rate(3)	Jan-Jul	Rate(3)	
B&E Business		118	123.6	144	150.8	22.0
B&E-Other		94	98.4	145	151.8	54.3
B&E-Residence		207	216.8	219	229.3	5.8
Fraud		272	284.8	172	180.1	-36.8
Possession of Stolen Property/Break and Enter Tools		53	55.5	45	47.1	-15.1
Theft Over \$5000		11	11.5	16	16.8	45.5
Theft Under \$5000		544	569.6	680	712.0	25.0
Theft from Motor Vehicle		1307	1368.6	894	936.1	-31.6
Theft of Motor Vehicle		115	120.4	152	159.2	32.2
Take Vehicle without Consent		6	6.3	5	5.2	-16.7
Theft of Bicycle		175	183.2	249	260.7	42.3
Shoplifting		607	635.6	581	608.4	-4.3
Arson		16	16.8	15	15.7	-6.3

Other Criminal Code Offences (YTD January - July)

		2011		2012		% Change 2011 - 2012(4)
		Jan-Jul	Rate(3)	Jan-Jul	Rate(3)	
Bail Violations/Breach of Probation		325	340.3	367	384.3	12.9
Domestic Dispute		502	525.7	444	464.9	-11.6
Drugs		597	625.1	459	480.6	-23.1
Indecent Acts		72	75.4	22	23.0	-69.4
Mischief		931	974.9	691	723.6	-25.8
Offensive Weapons		128	134.0	67	70.2	-47.7

Traffic Offences (YTD January - July)

		2011		2012		% Change 2011 - 2012(4)
		Jan-Jul	Rate(3)	Jan-Jul	Rate(3)	
Traffic - Collisions		506	529.8	422	441.9	-16.6
Traffic - Fatal		0	0.0	1	1.0	-
Traffic - Other		286	299.5	376	393.7	31.5
Dangerous Operation of Motor Vehicle		5	5.2	7	7.3	40.0
Fail to Remain		138	144.5	81	84.8	-41.3
Impaired/Refuse		276	289.0	164	171.7	-40.6

Calls for Service (YTD January - July)

					2011				2012				% Change 2011 - 2012(4)
					Vic	% of Total	Esq	% of Total	Vic	% of Total	Esq	% of Total	
Priority 1: Emergency, dispatch immediate, high probability of death or grievous bodily harm					2015	83.5	398	16.5	1662	83.4	332	16.6	-17.5
Priority 2: Urgent, dispatch immediate, not life threatening in nature					5932	88.4	779	11.6	7398	91.3	702	8.7	20.3
Priority 3: Routine: non-urgent					11989	90.5	1259	9.5	10444	89.7	1193	10.3	-12.0
Priority 4: May or may not be dispatched, dependant on agency					8124	91.0	802	9.0	6309	90.0	698	10.0	-21.4
Other Alternative					3	75.0	1	25.0	13	-	0	0.0	225.0
Total - All Priorities					28063	89.7	3239	10.3	25826	89.8	2925	10.2	-8.1

**Please Note the above table was calculated according to Municipality with only Victoria and Esquimalt calls calculated. The table below was calculated according to Neighbourhood. The 'Grand Total' includes all calls attended notwithstanding jurisdiction. As a result the numbers may not correspond.

Calls for Service by Priority and Neighbourhood (January - July)

<i>Neighbourhood</i>	<i>Priority 1</i>	<i>Priority 2</i>	<i>Priority 3</i>	<i>Priority 4</i>	<i>Other</i>	<i>Total</i>	<i>% of Total City</i>	<i>% of Grand total</i>
COLVILLE	13	26	49	33		121	4.1	0.4
DEVONSHIRE	20	33	70	50		173	5.9	0.6
DN1		5	3	4		12	0.4	0.0
ESQUIMALT VILLAGE	92	236	377	212		917	31.4	3.2
PANHANDLE	15	59	62	45		181	6.2	0.6
PARKLANDS	15	20	42	21		98	3.4	0.3
ROCKHEIGHTS	45	64	120	51		280	9.6	1.0
SAXE POINT	13	34	91	55		193	6.6	0.7
SELKIRK	32	84	113	79		308	10.5	1.1
WEST BAY	87	140	265	147		639	21.9	2.2
TANK FARM	0	0	0	0	0	0	0.0	0.0
ESQUIMALT TOTAL	332	701	1192	697	0	2922	100.0	10.1
BURNSIDE GORGE	347	995	1701	836	1	3880	15.0	13.4
DOWNTOWN	256	1398	2454	1519	2	5629	21.7	19.5
FAIRFIELD	101	313	678	417	1	1510	5.8	5.2
FERNWOOD	137	336	576	405		1454	5.6	5.0
GONZALES	20	51	123	89		283	1.1	1.0
HARRIS GREEN	109	471	908	468		1956	7.6	6.8
HILLSIDE QUADRA	165	349	646	319		1479	5.7	5.1
JAMES BAY	128	384	615	407		1534	5.9	5.3
NORTH JUBILEE	32	78	129	86		325	1.3	1.1
NORTH PARK	121	2183	1258	971	7	4540	17.5	15.7
OAKLANDS	98	223	422	244		987	3.8	3.4
ROCKLAND	15	96	106	96	1	314	1.2	1.1
SOUTH JUBILEE	34	233	268	133		668	2.6	2.3
VIC WEST	99	288	555	320	1	1263	4.9	4.4
UNKNOWN		5	48	17		70	0.3	0.2
VICTORIA TOTAL	1662	7403	10487	6327	13	25892	100.0	89.5
GRAND TOTAL	2007	8138	11721	7035	13	28914		100.0

