



## ARCHIVED - Archiving Content

### Archived Content

Information identified as archived is provided for reference, research or recordkeeping purposes. It is not subject to the Government of Canada Web Standards and has not been altered or updated since it was archived. Please contact us to request a format other than those available.

## ARCHIVÉE - Contenu archivé

### Contenu archivé

L'information dont il est indiqué qu'elle est archivée est fournie à des fins de référence, de recherche ou de tenue de documents. Elle n'est pas assujettie aux normes Web du gouvernement du Canada et elle n'a pas été modifiée ou mise à jour depuis son archivage. Pour obtenir cette information dans un autre format, veuillez communiquer avec nous.

This document is archival in nature and is intended for those who wish to consult archival documents made available from the collection of Public Safety Canada.

Some of these documents are available in only one official language. Translation, to be provided by Public Safety Canada, is available upon request.

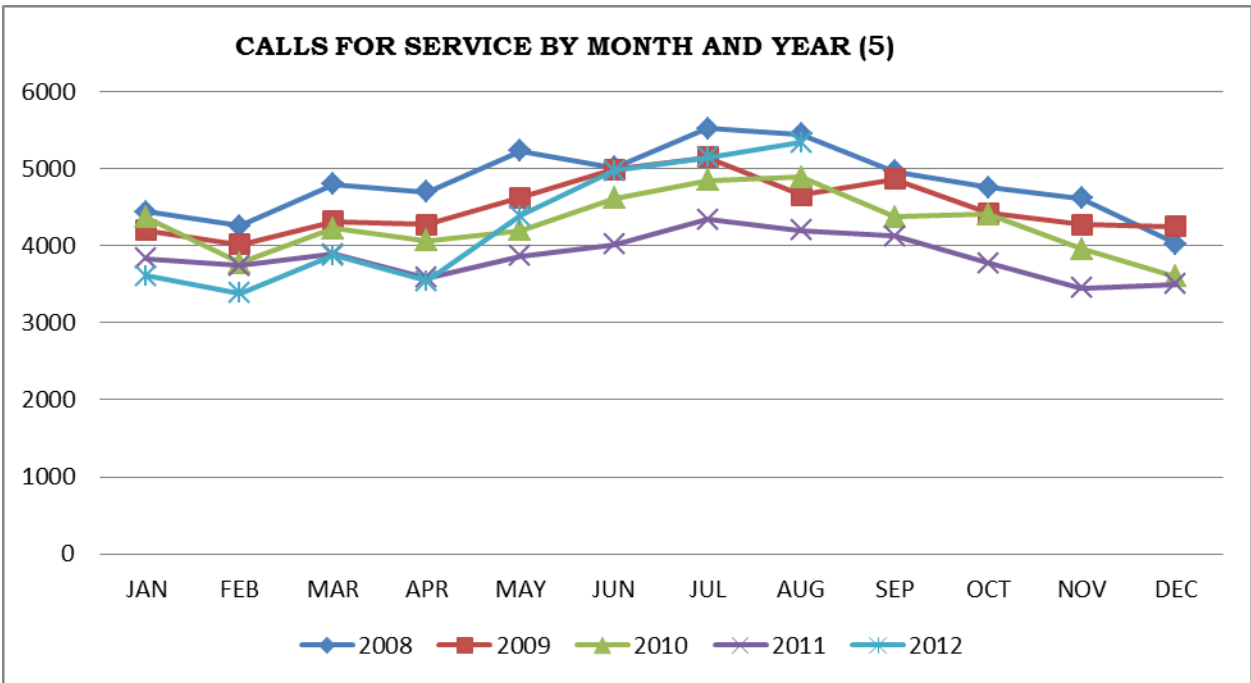
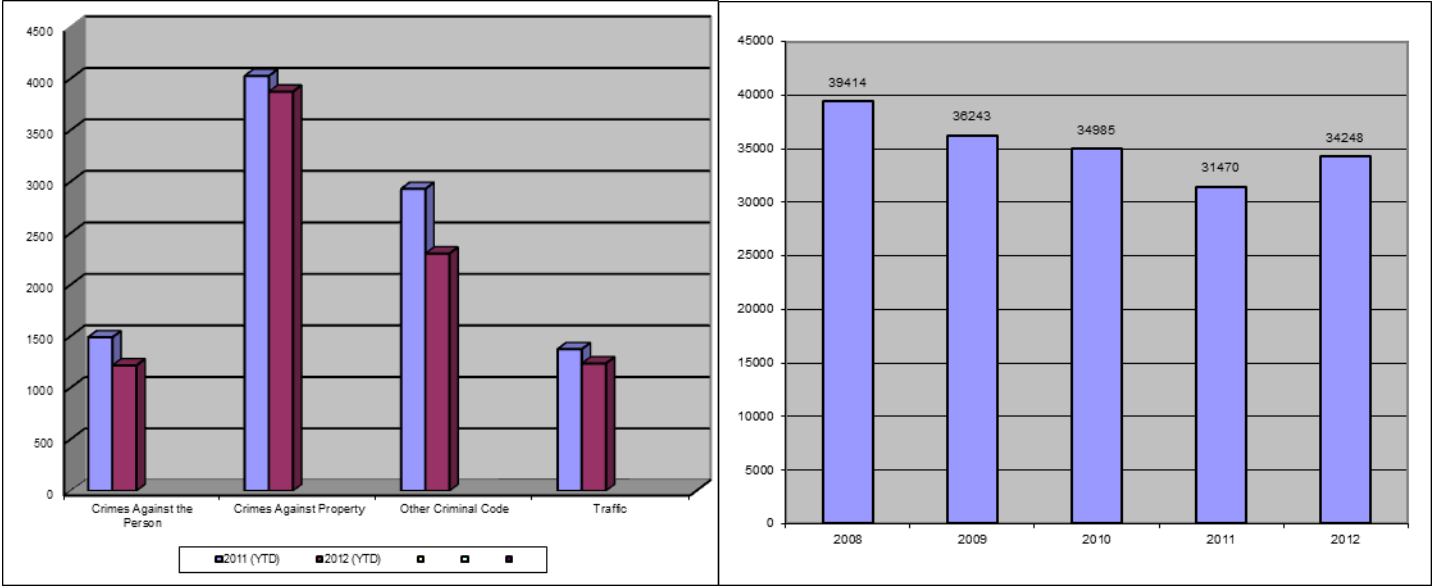
Le présent document a une valeur archivistique et fait partie des documents d'archives rendus disponibles par Sécurité publique Canada à ceux qui souhaitent consulter ces documents issus de sa collection.

Certains de ces documents ne sont disponibles que dans une langue officielle. Sécurité publique Canada fournira une traduction sur demande.

### Crime Trends for Victoria and Esquimalt: January - August, 2011 - 2012 (1, 2)

Key Crime Trends

Total Calls for Service (Annual)(5)



### Key Crime Trends (YTD- January - August)

	2011		2012		% Change 2011 - 2012(4)
	Jan-Aug	Rate(3)	Jan-Aug	Rate(3)	
Crime Against the Person	1491	1561.3	1218	1275.4	-18.3
Crimes Against Property	4028	4217.8	3874	4056.6	-3.8
Other Criminal Code of Canada Offenses	2931	3069.1	2304	2412.6	-21.4
Total CCC Offences Excluding Traffic	8450	8848.3	7396	7744.6	-12.5
Traffic Offences	1376	1440.9	1237	1295.3	-10.1
Total CCC Offences and Traffic	9826	10289.1	8633	9039.9	-12.1

### Crimes Against Person (YTD January - August)

	2011		2012		% Change 2011 - 2012(4)
	Jan-Aug	Rate(3)	Jan-Aug	Rate(3)	
Homicide	0	0.0	0	0.0	-
Attempted Murder	1	1.0	1	1.0	-
Robbery/Extortion	125	130.9	96	100.5	-23.2
Assault	900	942.4	810	848.2	-10.0
Sexual Assault	92	96.3	62	64.9	-32.6
Criminal Harassment	66	69.1	40	41.9	-39.4
Uttering Threats	305	319.4	208	217.8	-31.8
Arson - Disregard for Life	2	2.1	1	1.0	-50.0

#### Notes:

1. The data presented is taken from the Police Records Information Management Environment (PRIME) database. Data that is coded and analyzed according to the requirements of the violation coding structure for Uniform Crime Reporting (UCR) survey as set up by Statistics Canada.
2. The crime statistics published in this report are accurate on the day that they were analyzed. Due to ongoing police investigation and internal data quality control efforts, this information is subject to change, including addition, deletion and reclassification of any and all data. Rates and percentages have been rounded.
3. Rate is calculated on a per 100,000 rate for each month and year. As provided by Capital Region District, the 2011 and 2012 population is estimated at 100,657.
4. The % change is based on the actual values and is subject to (2).
5. As of April 2012, Victoria Police now record all abandoned 911 calls (e.g. "pocket dials") when calculating total calls for service.

Crimes Against Property (YTD January - August)

		2011		2012		% Change 2011 - 2012(4)
		Jan-Aug	Rate(3)	Jan-Aug	Rate(3)	
B&E Business		140	146.6	176	184.3	25.7
B&E-Other		114	119.4	168	175.9	47.4
B&E-Residence		241	252.4	258	270.2	7.1
Fraud		305	319.4	191	200.0	-37.4
Possession of Stolen Property/Break and Enter Tools		60	62.8	51	53.4	-15.0
Theft Over \$5000		13	13.6	17	17.8	30.8
Theft Under \$5000		637	667.0	790	827.2	24.0
Theft from Motor Vehicle		1454	1522.5	1067	1117.3	-26.6
Theft of Motor Vehicle		142	148.7	170	178.0	19.7
Take Vehicle without Consent		6	6.3	5	5.2	-16.7
Theft of Bicycle		208	217.8	300	314.1	44.2
Shoplifting		692	724.6	664	695.3	-4.0
Arson		16	16.8	17	17.8	6.3

Other Criminal Code Offences (YTD January - August)

		2011		2012		% Change 2011 - 2012(4)
		Jan-Aug	Rate(3)	Jan-Aug	Rate(3)	
Bail Violations/Breach of Probation		377	394.8	394	412.6	4.5
Domestic Dispute		580	607.3	507	530.9	-12.6
Drugs		691	723.6	522	546.6	-24.5
Indecent Acts		82	85.9	29	30.4	-64.6
Mischief		1063	1113.1	786	823.0	-26.1
Offensive Weapons		138	144.5	66	69.1	-52.2

Traffic Offences (YTD January - August)

		2011		2012		% Change 2011 - 2012(4)
		Jan-Aug	Rate(3)	Jan-Aug	Rate(3)	
Traffic - Collisions		579	606.3	488	511.0	-15.7
Traffic - Fatal		0	0.0	2	2.1	-
Traffic - Other		326	341.4	434	454.5	33.1
Dangerous Operation of Motor Vehicle		5	5.2	9	9.4	80.0
Fail to Remain		162	169.6	94	98.4	-42.0
Impaired/Refuse		304	318.3	210	219.9	-30.9

Calls for Service (YTD January - August)

					2011				2012				% Change 2011 - 2012(4)
					Vic	% of Total	Esq	% of Total	Vic	% of Total	Esq	% of Total	
<b>Priority 1:</b> Emergency, dispatch immediate, high probability of death or grievous bodily harm					2015	83.5	398	16.5	1921	83.6	378	16.4	-4.6
<b>Priority 2:</b> Urgent, dispatch immediate, not life threatening in nature					5932	88.4	779	11.6	9276	92.0	810	8.0	49.8
<b>Priority 3:</b> Routine: non-urgent					11989	90.5	1259	9.5	12070	89.8	1378	10.2	1.8
<b>Priority 4:</b> May or may not be dispatched, dependent on agency					8124	91.0	802	9.0	7336	89.8	837	10.2	-8.2
Other Alternative					3	75.0	1	25.0	17	100.0		0.0	325.0
<b>Total - All Priorities</b>					<b>28063</b>	<b>89.7</b>	<b>3239</b>	<b>10.3</b>	<b>30620</b>	<b>90.0</b>	<b>3403</b>	<b>10.0</b>	<b>8.8</b>

\*\*Please Note the above table was calculated according to Municipality with only Victoria and Esquimalt calls calculated. The table below was calculated according to Neighbourhood. The 'Grand Total' includes all calls attended notwithstanding jurisdiction. As a result the numbers may not correspond.

Calls for Service by Priority and Neighbourhood (January - August)

<i>Neighbourhood</i>	<i>Priority 1</i>	<i>Priority 2</i>	<i>Priority 3</i>	<i>Priority 4</i>	<i>Other</i>	<i>Total</i>	<i>% of Total City</i>	<i>% of Grand total</i>
<b>COLVILLE</b>	13	26	49	33		121	4.1	0.4
<b>DEVONSHIRE</b>	20	33	70	50		173	5.9	0.6
<b>DN1</b>		5	3	4		12	0.4	0.0
<b>ESQUIMALT VILLAGE</b>	92	236	377	212		917	31.4	3.2
<b>PANHANDLE</b>	15	59	62	45		181	6.2	0.6
<b>PARKLANDS</b>	15	20	42	21		98	3.4	0.3
<b>ROCKHEIGHTS</b>	45	64	120	51		280	9.6	1.0
<b>SAXE POINT</b>	13	34	91	55		193	6.6	0.7
<b>SELKIRK</b>	32	84	113	79		308	10.5	1.1
<b>WEST BAY</b>	87	140	265	147		639	21.9	2.2
<b>TANK FARM</b>	0	0	0	0	0	0	0.0	0.0
<b>ESQUIMALT TOTAL</b>	332	701	1192	697	0	2922	100.0	10.1
<b>BURNSIDE GORGE</b>	347	995	1701	836	1	3880	15.0	13.4
<b>DOWNTOWN</b>	256	1398	2454	1519	2	5629	21.7	19.5
<b>FAIRFIELD</b>	101	313	678	417	1	1510	5.8	5.2
<b>FERNWOOD</b>	137	336	576	405		1454	5.6	5.0
<b>GONZALES</b>	20	51	123	89		283	1.1	1.0
<b>HARRIS GREEN</b>	109	471	908	468		1956	7.6	6.8
<b>HILLSIDE QUADRA</b>	165	349	646	319		1479	5.7	5.1
<b>JAMES BAY</b>	128	384	615	407		1534	5.9	5.3
<b>NORTH JUBILEE</b>	32	78	129	86		325	1.3	1.1
<b>NORTH PARK</b>	121	2183	1258	971	7	4540	17.5	15.7
<b>OAKLANDS</b>	98	223	422	244		987	3.8	3.4
<b>ROCKLAND</b>	15	96	106	96	1	314	1.2	1.1
<b>SOUTH JUBILEE</b>	34	233	268	133		668	2.6	2.3
<b>VIC WEST</b>	99	288	555	320	1	1263	4.9	4.4
<b>UNKNOWN</b>		5	48	17		70	0.3	0.2
<b>VICTORIA TOTAL</b>	1662	7403	10487	6327	13	25892	100.0	89.5
<b>GRAND TOTAL</b>	2007	8138	11721	7035	13	28914		100.0

