



ARCHIVED - Archiving Content

Archived Content

Information identified as archived is provided for reference, research or recordkeeping purposes. It is not subject to the Government of Canada Web Standards and has not been altered or updated since it was archived. Please contact us to request a format other than those available.

ARCHIVÉE - Contenu archivé

Contenu archivé

L'information dont il est indiqué qu'elle est archivée est fournie à des fins de référence, de recherche ou de tenue de documents. Elle n'est pas assujettie aux normes Web du gouvernement du Canada et elle n'a pas été modifiée ou mise à jour depuis son archivage. Pour obtenir cette information dans un autre format, veuillez communiquer avec nous.

This document is archival in nature and is intended for those who wish to consult archival documents made available from the collection of Public Safety Canada.

Some of these documents are available in only one official language. Translation, to be provided by Public Safety Canada, is available upon request.

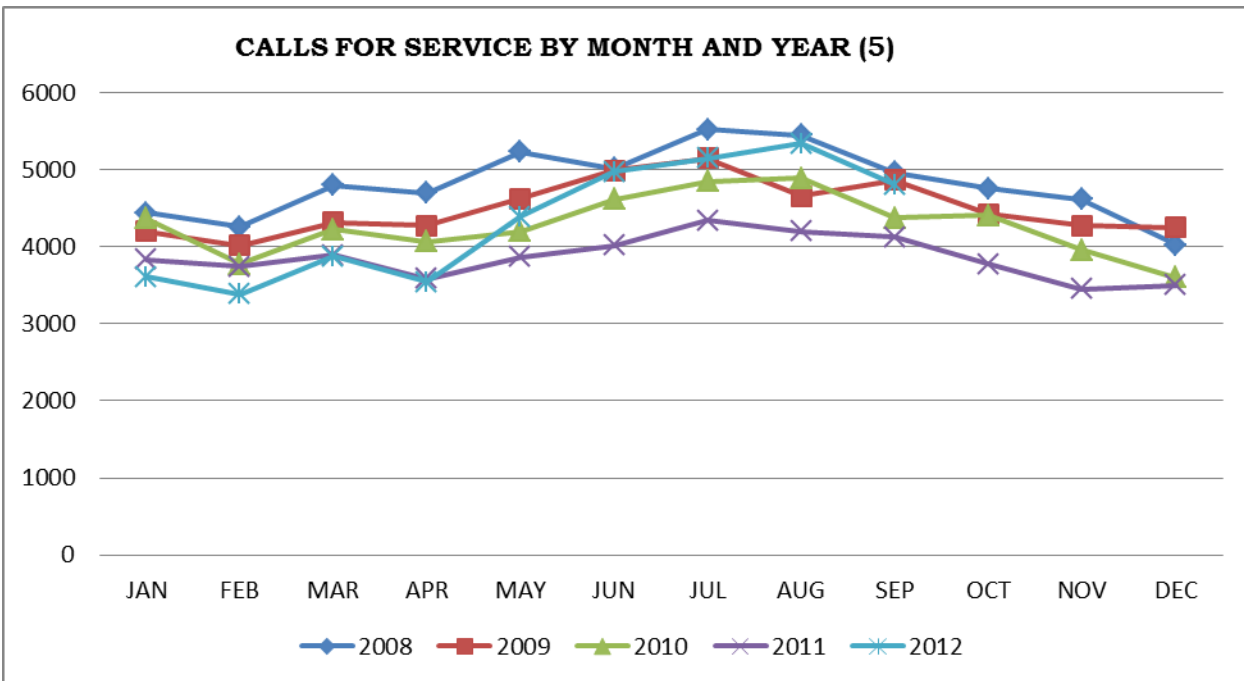
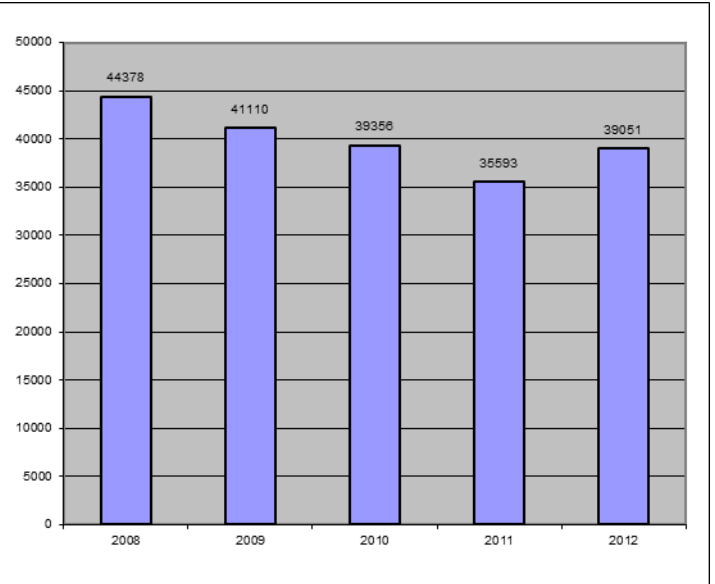
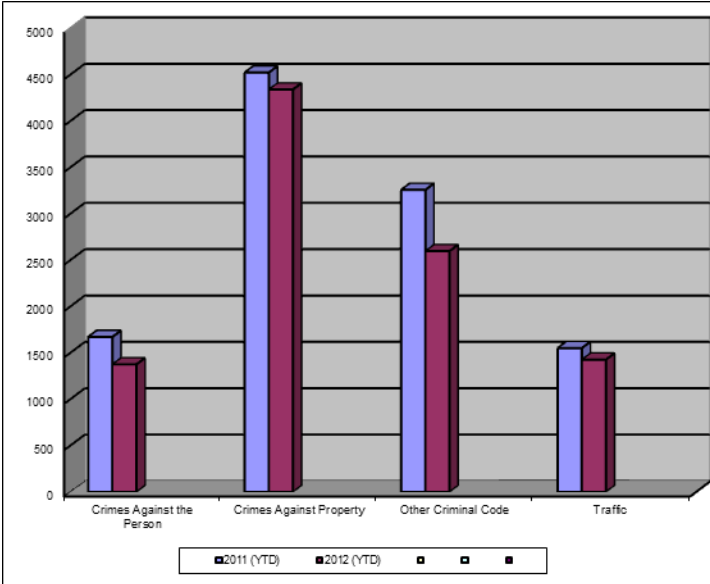
Le présent document a une valeur archivistique et fait partie des documents d'archives rendus disponibles par Sécurité publique Canada à ceux qui souhaitent consulter ces documents issus de sa collection.

Certains de ces documents ne sont disponibles que dans une langue officielle. Sécurité publique Canada fournira une traduction sur demande.

Crime Trends for Victoria and Esquimalt: January - September, 2011 - 2012 (1, 2)

Key Crime Trends

Total Calls for Service (Annual)(5)



Key Crime Trends (YTD- January - September)

	2011		2012		% Change 2011 - 2012(4)
	Jan-Sep	Rate(3)	Jan-Sep	Rate(3)	
Crime Against the Person	1671	1749.8	1375	1439.8	-17.7
Crimes Against Property	4523	4736.2	4340	4544.6	-4.0
Other Criminal Code of Canada Offenses	3257	3410.5	2596	2718.4	-20.3
Total CCC Offences Excluding Traffic	9451	9896.4	8311	8702.7	-12.1
Traffic Offences	1551	1624.1	1426	1493.2	-8.1
Total CCC Offences and Traffic	11002	11520.5	9737	10195.9	-11.5

Crimes Against Person (YTD January - September)

	2011		2012		% Change 2011 - 2012(4)
	Jan-Sep	Rate(3)	Jan-Sep	Rate(3)	
Homicide	0	0.0	0	0.0	-
Attempted Murder	1	1.0	1	1.0	-
Robbery/Extortion	139	145.6	107	112.0	-23.0
Assault	1019	1067.0	903	945.6	-11.4
Sexual Assault	99	103.7	72	75.4	-27.3
Criminal Harassment	73	76.4	47	49.2	-35.6
Uttering Threats	338	353.9	243	254.5	-28.1
Arson - Disregard for Life	2	2.1	2	2.1	0.0

Notes:

1. The data presented is taken from the Police Records Information Management Environment (PRIME) database. Data that is coded and analyzed according to the requirements of the violation coding structure for Uniform Crime Reporting (UCR) survey as set up by Statistics Canada.
2. The crime statistics published in this report are accurate on the day that they were analyzed. Due to ongoing police investigation and internal data quality control efforts, this information is subject to change, including addition, deletion and reclassification of any and all data. Rates and percentages have been rounded.
3. Rate is calculated on a per 100,000 rate for each month and year. As provided by Capital Region District, the 2011 and 2012 population is estimated at 100,657.
4. The % change is based on the actual values and is subject to (2).
5. As of April 2012, Victoria Police now record all abandoned 911 calls (e.g. "pocket dials") when calculating total calls for service.

Crimes Against Property (YTD January - September)

		2011		2012		% Change 2011 - 2012(4)
		Jan-Sep	Rate(3)	Jan-Sep	Rate(3)	
B&E Business		163	170.7	189	197.9	16.0
B&E-Other		133	139.3	180	188.5	35.3
B&E-Residence		281	294.2	280	293.2	-0.4
Fraud		337	352.9	222	232.5	-34.1
Possession of Stolen Property/Break and Enter Tools		68	71.2	65	68.1	-4.4
Theft Over \$5000		15	15.7	20	20.9	33.3
Theft Under \$5000		744	779.1	883	924.6	18.7
Theft from Motor Vehicle		1562	1635.6	1178	1233.5	-24.6
Theft of Motor Vehicle		157	164.4	189	197.9	20.4
Take Vehicle without Consent		6	6.3	6	6.3	0.0
Theft of Bicycle		253	264.9	351	367.5	38.7
Shoplifting		787	824.1	756	791.6	-3.9
Arson		17	17.8	21	22.0	23.5

Other Criminal Code Offences (YTD January - September)

		2011		2012		% Change 2011 - 2012(4)
		Jan-Sep	Rate(3)	Jan-Sep	Rate(3)	
Bail Violations/Breach of Probation		423	442.9	439	459.7	3.8
Domestic Dispute		641	671.2	571	597.9	-10.9
Drugs		759	794.8	601	629.3	-20.8
Indecent Acts		87	91.1	31	32.5	-64.4
Mischief		1195	1251.3	879	920.4	-26.4
Offensive Weapons		152	159.2	75	78.5	-50.7

Traffic Offences (YTD January - September)

		2011		2012		% Change 2011 - 2012(4)
		Jan-Sep	Rate(3)	Jan-Sep	Rate(3)	
Traffic - Collisions		654	684.8	568	594.8	-13.1
Traffic - Fatal		0	0.0	2	2.1	-
Traffic - Other		395	413.6	494	517.3	25.1
Dangerous Operation of Motor Vehicle		6	6.3	9	9.4	50.0
Fail to Remain		172	180.1	104	108.9	-39.5
Impaired/Refuse		324	339.3	249	260.7	-23.1

Calls for Service (YTD January - September)

					2011				2012				% Change 2011 - 2012(4)
					Vic	% of Total	Esq	% of Total	Vic	% of Total	Esq	% of Total	
Priority 1: Emergency, dispatch immediate, high probability of death or grievous bodily harm					2265	83.7	441	16.3	2146	83.5	423	16.5	-5.0
Priority 2: Urgent, dispatch immediate, not life threatening in nature					6762	88.4	889	11.6	10877	92.3	904	7.7	53.7
Priority 3: Routine: non-urgent					13603	90.5	1435	9.5	13634	89.7	1572	10.3	1.5
Priority 4: May or may not be dispatched, dependent on agency					9119	91.2	883	8.8	8230	89.7	944	10.3	-7.9
Other Alternative					4	66.7	2	33.3	20	100.0		0.0	233.3
Total - All Priorities					31753	89.7	3650	10.3	34907	90.1	3843	9.9	9.7

**Please Note the above table was calculated according to Municipality with only Victoria and Esquimalt calls calculated. The table below was calculated according to Neighbourhood. The 'Grand Total' includes all calls attended notwithstanding jurisdiction. As a result the numbers may not correspond.

Calls for Service by Priority and Neighbourhood (January - September)

<i>Neighbourhood</i>	<i>Priority 1</i>	<i>Priority 2</i>	<i>Priority 3</i>	<i>Priority 4</i>	<i>Other</i>	<i>Total</i>	<i>% of Total City</i>	<i>% of Grand total</i>
COLVILLE	17	35	73	40		165	4.3	0.4
DEVONSHIRE	23	46	87	64		220	5.7	0.6
DN1		6	4	4		14	0.4	0.0
ESQUIMALT VILLAGE	115	292	500	279		1186	31.0	3.0
PANHANDLE	17	78	90	65		250	6.5	0.6
PARKLANDS	18	22	60	34		134	3.5	0.3
ROCKHEIGHTS	59	83	149	75		366	9.6	0.9
SAXE POINT	21	44	122	78		265	6.9	0.7
SELKIRK	42	109	155	108		414	10.8	1.1
WEST BAY	111	178	332	196		817	21.3	2.1
TANK FARM	0	0	0	0	0	0	0.0	0.0
ESQUIMALT TOTAL	423	893	1572	943	0	3831	100.0	9.8
BURNSIDE GORGE	434	1287	2206	1116	3	5046	14.4	12.9
DOWNTOWN	338	1841	3177	1985	3	7344	21.0	18.8
FAIRFIELD	140	425	923	563	2	2053	5.9	5.3
FERNWOOD	176	422	798	549		1945	5.6	5.0
GONZALES	25	59	155	128	1	368	1.1	0.9
HARRIS GREEN	132	613	1146	568		2459	7.0	6.3
HILLSIDE QUADRA	209	457	865	420		1951	5.6	5.0
JAMES BAY	182	553	832	527	1	2095	6.0	5.4
NORTH JUBILEE	36	103	170	112		421	1.2	1.1
NORTH PARK	173	4029	1604	1242	8	7056	20.1	18.1
OAKLANDS	122	287	554	308		1271	3.6	3.3
ROCKLAND	18	121	147	127	1	414	1.2	1.1
SOUTH JUBILEE	39	304	336	167		846	2.4	2.2
VIC WEST	122	369	715	416	1	1623	4.6	4.2
UNKNOWN	1	11	85	39	0	136	0.4	0.3
VICTORIA TOTAL	2147	10881	13713	8267	20	35028	100.0	89.7
GRAND TOTAL	2592	11853	15347	9239	20	39051		100.0

