



ARCHIVED - Archiving Content

Archived Content

Information identified as archived is provided for reference, research or recordkeeping purposes. It is not subject to the Government of Canada Web Standards and has not been altered or updated since it was archived. Please contact us to request a format other than those available.

ARCHIVÉE - Contenu archivé

Contenu archivé

L'information dont il est indiqué qu'elle est archivée est fournie à des fins de référence, de recherche ou de tenue de documents. Elle n'est pas assujettie aux normes Web du gouvernement du Canada et elle n'a pas été modifiée ou mise à jour depuis son archivage. Pour obtenir cette information dans un autre format, veuillez communiquer avec nous.

This document is archival in nature and is intended for those who wish to consult archival documents made available from the collection of Public Safety Canada.

Some of these documents are available in only one official language. Translation, to be provided by Public Safety Canada, is available upon request.

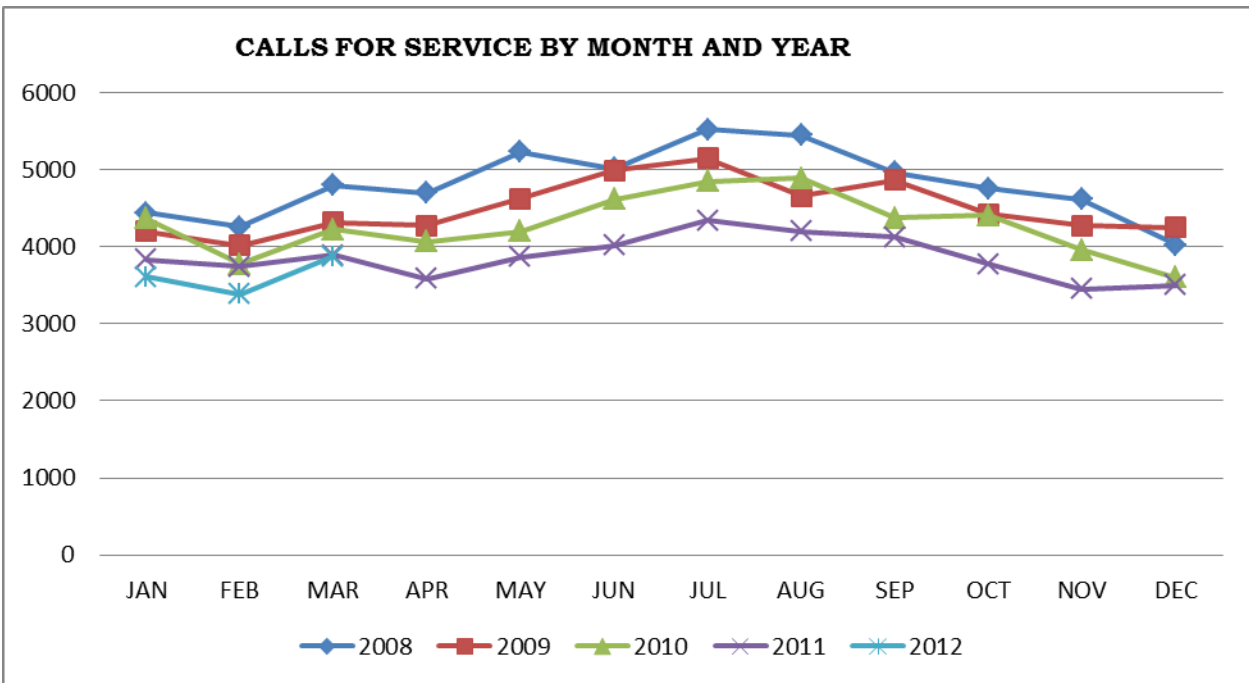
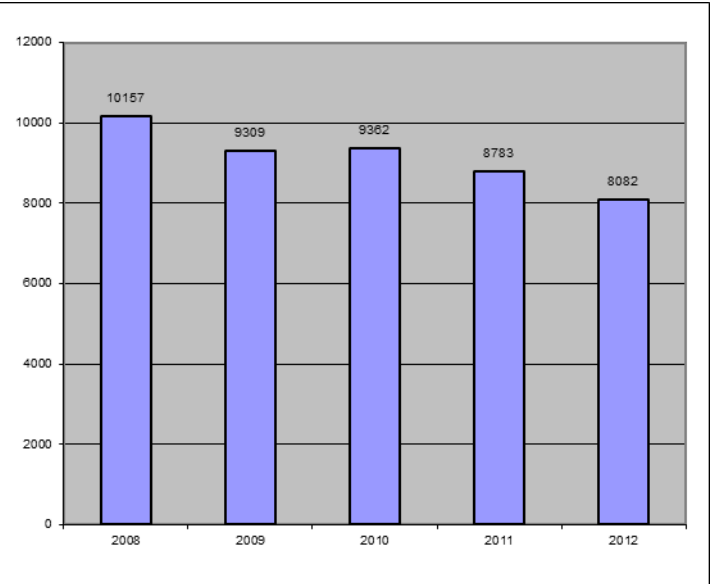
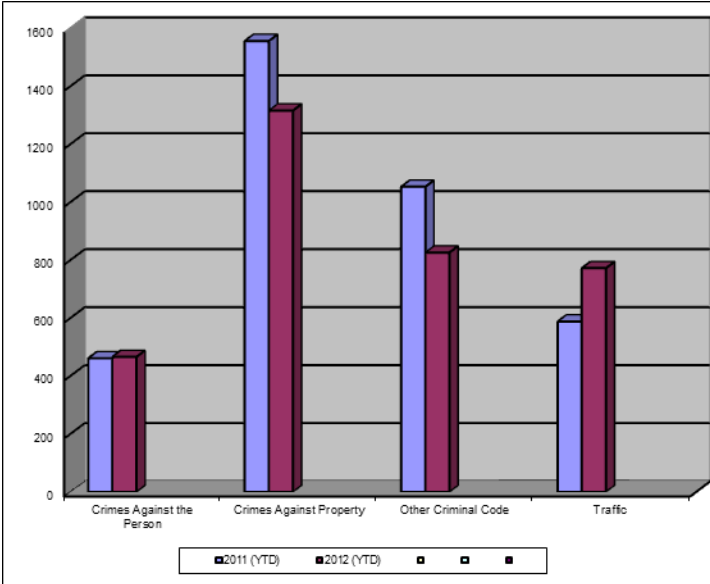
Le présent document a une valeur archivistique et fait partie des documents d'archives rendus disponibles par Sécurité publique Canada à ceux qui souhaitent consulter ces documents issus de sa collection.

Certains de ces documents ne sont disponibles que dans une langue officielle. Sécurité publique Canada fournira une traduction sur demande.

Crime Trends for Victoria and Esquimalt : January - March, 2011 - 2012 (1,2)

Key Crime Trends

Total Calls for Service (Annual)



Key Crime Trends (YTD- January - March)

	2011		2012		% Change 2011 - 2012(4)
	Jan-Mar	Rate(3)	Jan-Mar	Rate(3)	
Crime Against the Person	461	482.7	466	488.0	1.1
Crimes Against Property	1556	1629.3	1316	1378.0	-15.4
Other Criminal Code of Canada Offences	1053	1102.6	826	864.9	-21.6
Total CCC Offences Excluding Traffic	3070	3214.7	2608	2730.9	-15.0
Traffic Offences	588	615.7	442	462.8	-24.8
Total CCC Offences and Traffic	3658	3830.4	3050	3193.8	-16.6

Crimes Against Person (YTD January - March)

	2011		2012		% Change 2011 - 2012(4)
	Jan-Mar	Rate(3)	Jan-Mar	Rate(3)	
Homicide	0	0.0	0	0.0	-
Attempted Murder	0	0.0	0	0.0	-
Robbery/Extortion	47	49.2	41	42.9	-12.8
Assault	276	289.0	325	340.3	17.8
Sexual Assault	28	29.3	28	29.3	0.0
Criminal Harassment	33	34.6	11	11.5	-66.7
Uttering Threats	75	78.5	60	62.8	-20.0
Arson - Disregard for Life	2	2.1	1	1.0	-

Notes:

1. The data presented is taken from the Police Records Information Management Environment (PRIME) database. Data that is coded and analyzed according to the requirements of the violation coding structure for Uniform Crime Reporting (UCR) survey as set up by Statistics Canada.
2. The crime statistics published in this report are accurate on the day that they were analyzed. Due to ongoing police investigation and internal data quality control efforts, this information is subject to change, including addition, deletion and reclassification of any and all data. Rates and percentages have been rounded.
3. Rate is calculated on a per 100,000 rate for each month and year. As provided by Capital Region District, the 2011 and 2012 population is estimated at 100,657.
4. The % change is based on the actual values and is subject to (2).

Crimes Against Property (YTD January - March)

		2011		2012		% Change 2011 - 2012(4)
		Jan-Mar	Rate(3)	Jan-Mar	Rate(3)	
B&E Business		43	45.0	64	67.0	48.8
B&E-Other		34	35.6	48	50.3	41.2
B&E-Residence		96	100.5	127	133.0	32.3
Fraud		109	114.1	92	96.3	-15.6
Possession of Stolen Property/Break and Enter Tools		23	24.1	13	13.6	-43.5
Theft Over \$5000		7	7.3	7	7.3	0.0
Theft Under \$5000		198	207.3	292	305.8	47.5
Theft from Motor Vehicle		700	733.0	300	314.1	-57.1
Theft of Motor Vehicle		49	51.3	58	60.7	18.4
Take Vehicle without Consent		2	2.1	6	6.3	200.0
Theft of Bicycle		46	48.2	86	90.1	87.0
Shoplifting		236	247.1	216	226.2	-8.5
Arson		3	3.1	3	3.1	0.0

Other Criminal Code Offences (YTD January - March)

		2011		2012		% Change 2011 - 2012(4)
		Jan-Mar	Rate(3)	Jan-Mar	Rate(3)	
Bail Violations/Breach of Probation		126	131.9	120	125.7	-4.8
Domestic Dispute		230	240.8	182	190.6	-20.9
Drugs		233	244.0	202	211.5	-13.3
Indecent Acts		20	20.9	5	5.2	-75.0
Mischief		401	419.9	291	304.7	-27.4
Offensive Weapons		43	45.0	26	27.2	-39.5

Traffic Offences (YTD January - March)

		2011		2012		% Change 2011 - 2012(4)
		Jan-Mar	Rate(3)	Jan-Mar	Rate(3)	
Traffic - Collisions		233	244.0	174	182.2	-25.3
Traffic - Fatal		0	0.0	1	1.0	-
Traffic - Other		165	172.8	144	150.8	-12.7
Dangerous Operation of Motor Vehicle		7	7.3	1	1.0	-85.7
Fail to Remain		40	41.9	30	31.4	-25.0
Impaired/Refuse		140	146.6	92	96.3	-34.3

Calls for Service (YTD January - March)

					2011				2012				% Change 2011 - 2012(4)
					Vic	% of Total	Esq	% of Total	Vic	% of Total	Esq	% of Total	
Priority 1: Emergency, dispatch immediate, high probability of death or grievous bodily harm					734	83.0	150	17.0	721	83.4	143	16.6	-2.2
Priority 2: Urgent, dispatch immediate, not life threatening in nature					2087	86.8	316	13.2	2178	89.0	269	11.0	1.4
Priority 3: Routine: non- urgent					4367	90.2	473	9.8	4188	89.0	520	11.0	-2.9
Priority 4: May or may not be dispatched, dependant on agency					2913	88.8	366	11.2	2543	90.8	258	9.2	-14.7
Other Alternative					1	50.0	1	50.0	3	-	0	0.0	50.0
Total - All Priorities					10102	88.6	1306	11.4	9633	89.0	1190	11.0	-5.3

**Please Note the above table was calculated according to Municipality – the table below was calculated according to Neighbourhood. As a result the numbers may not correspond. Also, only calls within Victoria and Esquimalt were calculated.

Calls for Service by Priority and Neighbourhood (January - March)

<i>Neighbourhood</i>	<i>Priority 1</i>	<i>Priority 2</i>	<i>Priority 3</i>	<i>Priority 4</i>	<i>Other</i>	<i>Total</i>	<i>% of Total City</i>	<i>% of Grand total</i>
COLVILLE	4	7	24	7		42	3.5	0.4
DEVONSHIRE	12	12	37	21		82	6.9	0.8
DN1		2	2	3		7	0.6	0.1
ESQUIMALT VILLAGE	33	97	150	88		368	31.0	3.4
PANHANDLE	7	15	28	17		67	5.6	0.6
PARKLANDS	7	9	16	7		39	3.3	0.4
ROCKHEIGHTS	18	23	58	18		117	9.8	1.1
SAXE POINT	7	11	40	26		84	7.1	0.8
SELKIRK	14	38	44	20		116	9.8	1.1
WEST BAY	41	54	121	50		266	22.4	2.4
TANK FARM	0	0	0	0	0	0	0.0	0.0
ESQUIMALT TOTAL	143	268	520	257	0	1188	100.0	10.9
BURNSIDE GORGE	159	438	729	361		1687	17.5	15.5
DOWNTOWN	103	469	970	583		2125	22.1	19.6
FAIRFIELD	47	112	293	179	1	632	6.6	5.8
FERNWOOD	65	139	208	174		586	6.1	5.4
GONZALES	7	18	47	29		101	1.0	0.9
HARRIS GREEN	44	159	371	200		774	8.0	7.1
HILLSIDE QUADRA	80	124	277	133		614	6.4	5.7
JAMES BAY	55	126	222	147		550	5.7	5.1
NORTH JUBILEE	16	25	46	38		125	1.3	1.2
NORTH PARK	49	266	525	373	1	1214	12.6	11.2
OAKLANDS	36	81	164	98		379	3.9	3.5
ROCKLAND	5	26	34	33	1	99	1.0	0.9
SOUTH JUBILEE	19	88	100	57		264	2.7	2.4
VIC WEST	36	108	200	139		483	5.0	4.4
UNKNOWN			1			1	0.0	0.0
VICTORIA TOTAL	721	2179	4187	2544	3	9634	100.0	88.7
GRAND TOTAL	870	2462	4725	2804	3	10864		100.0

Traffic Related Calls for Service (YTD – January – March, 2012)

	2011	2012	% Change	Grand Total
TTRAFFIC REPORT				
MARINE INCIDENT	3	0		3
MVI	164	176	7.3	340
MVI HIT AND RUN	62	59	-4.8	121
MVI INJURY	129	111	-14.0	240
TRAFFIC INCIDENT	264	193	-26.9	457
TRAFFIC SUSPENSION/24 HR/12 HR/PROHIB NOTICE	102	42	-58.8	144
Grand Total	724	581	-19.8	1305