



ARCHIVED - Archiving Content

Archived Content

Information identified as archived is provided for reference, research or recordkeeping purposes. It is not subject to the Government of Canada Web Standards and has not been altered or updated since it was archived. Please contact us to request a format other than those available.

ARCHIVÉE - Contenu archivé

Contenu archivé

L'information dont il est indiqué qu'elle est archivée est fournie à des fins de référence, de recherche ou de tenue de documents. Elle n'est pas assujettie aux normes Web du gouvernement du Canada et elle n'a pas été modifiée ou mise à jour depuis son archivage. Pour obtenir cette information dans un autre format, veuillez communiquer avec nous.

This document is archival in nature and is intended for those who wish to consult archival documents made available from the collection of Public Safety Canada.

Some of these documents are available in only one official language. Translation, to be provided by Public Safety Canada, is available upon request.

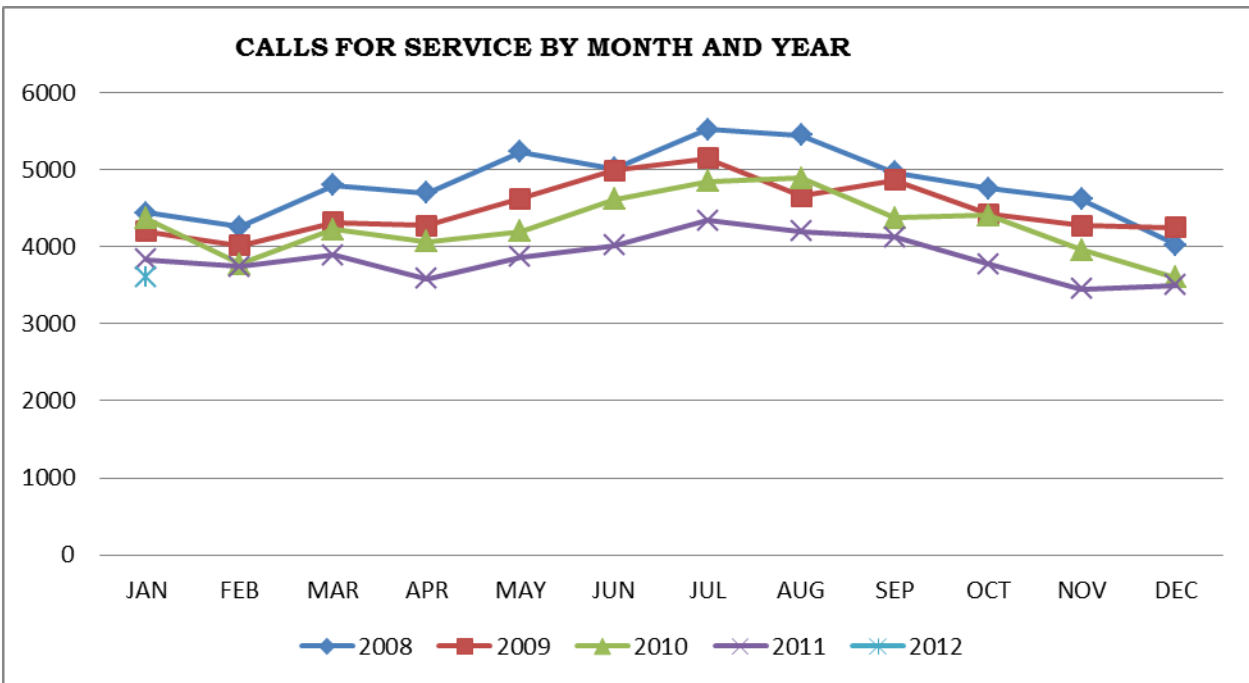
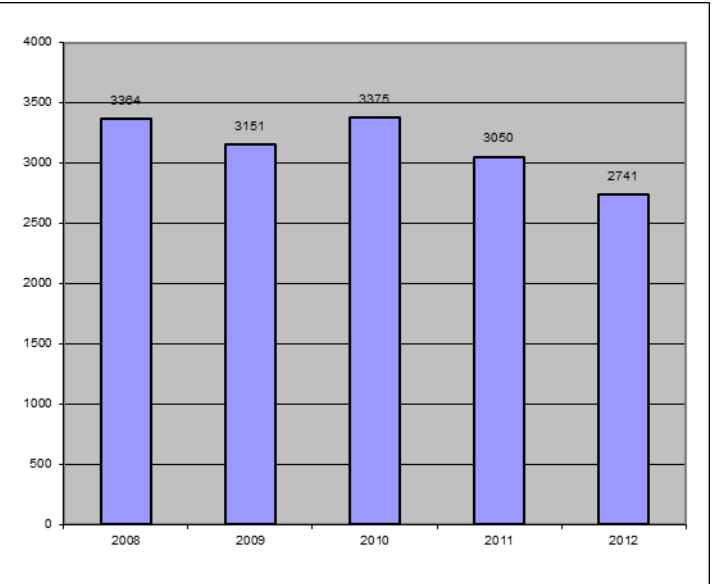
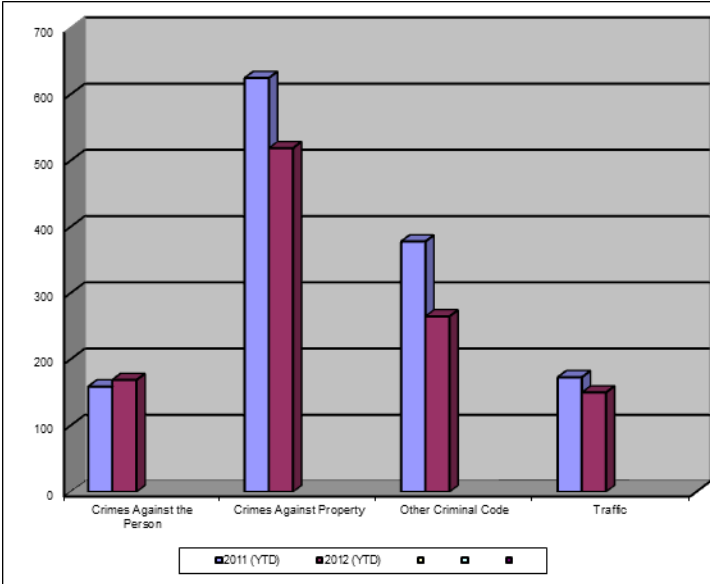
Le présent document a une valeur archivistique et fait partie des documents d'archives rendus disponibles par Sécurité publique Canada à ceux qui souhaitent consulter ces documents issus de sa collection.

Certains de ces documents ne sont disponibles que dans une langue officielle. Sécurité publique Canada fournira une traduction sur demande.

Crime Trends for Victoria and Esquimalt : January, 2011 – 2012 (1,2)

Key Crime Trends

Total Calls for Service (Annual)



Key Crime Trends (YTD- January 31)

	2011		2012		% Change 2011 - 2012(4)
	Jan	Rate(3)	Jan	Rate(3)	
Crime Against the Person	159	166.5	169	177.0	6.3
Crimes Against Property	625	654.5	519	543.5	-17.0
Other Criminal Code of Canada Offences	378	395.8	265	277.5	-29.9
Total CCC Offences Excluding Traffic	1162	1216.8	953	997.9	-18.0
Traffic Offences	173	181.2	150	157.1	-13.3
Total CCC Offences and Traffic	1335	1397.9	1103	1155.0	-17.4

Crimes Against Person (YTD January 31)

	2011		2012		% Change 2011 - 2012(4)
	Jan	Rate(3)	Jan	Rate(3)	
Homicide	0	0.0	0	0.0	-
Attempted Murder	0	0.0	0	0.0	-
Robbery/Extortion	13	13.6	16	16.8	23.1
Assault	95	99.5	112	117.3	17.9
Sexual Assault	11	11.5	11	11.5	0.0
Criminal Harassment	10	10.5	5	5.2	-50.0
Uttering Threats	30	31.4	24	25.1	-20.0
Arson - Disregard for Life	0	0.0	1	1.0	-

Notes:

1. The data presented is taken from the Police Records Information Management Environment (PRIME) database. Data that is coded and analyzed according to the requirements of the violation coding structure for Uniform Crime Reporting (UCR) survey as set up by Statistics Canada.
2. The crime statistics published in this report are accurate on the day that they were analyzed. Due to ongoing police investigation and internal data quality control efforts, this information is subject to change, including addition, deletion and reclassification of any and all data. Rates and percentages have been rounded.
3. Rate is calculated on a per 100,000 rate for each month and year. As provided by Capital Region District, the 2011 and 2012 population is estimated at 100,657.
4. The % change is based on the actual values and is subject to (2).

Crimes Against Property (YTD January 31)

		2011		2012		% Change 2011 - 2012(4)
		Jan	Rate(3)	Jan	Rate(3)	
B&E Business		18	18.8	17	17.8	-5.6
B&E-Other		11	11.5	23	24.1	109.1
B&E-Residence		27	28.3	37	38.7	37.0
Fraud		42	44.0	44	46.1	4.8
Possession of Stolen Property/Break and Enter Tools		9	9.4	4	4.2	-55.6
Theft Over \$5000		1	1.0	4	4.2	300.0
Theft Under \$5000		77	80.6	99	103.7	28.6
Theft from Motor Vehicle		322	337.2	177	185.3	-45.0
Theft of Motor Vehicle		22	23.0	11	11.5	-50.0
Take Vehicle without Consent		2	2.1	2	2.1	0.0
Theft of Bicycle		17	17.8	32	33.5	88.2
Shoplifting		76	79.6	67	70.2	-11.8
Arson		1	1.0	2	2.1	100.0

Other Criminal Code Offences (YTD January 31)

		2011		2012		% Change 2011 - 2012(4)
		Jan	Rate(3)	Jan	Rate(3)	
Bail Violations/Breach of Probation		37	38.7	38	39.8	2.7
Domestic Dispute		91	95.3	57	59.7	-37.4
Drugs		71	74.3	67	70.2	-5.6
Indecent Acts		6	6.3	0	0.0	-100.0
Mischief		151	158.1	96	100.5	-36.4
Offensive Weapons		22	23.0	7	7.3	-68.2

Traffic Offences (YTD January 31)

		2011		2012		% Change 2011 - 2012(4)
		Jan	Rate(3)	Jan	Rate(3)	
Traffic - Collisions		74	77.5	57	59.7	-23.0
Traffic - Fatal		0	0.0	0	0.0	-
Traffic - Other		46	48.2	54	56.5	17.4
Dangerous Operation of Motor Vehicle		6	6.3	0	0.0	-100.0
Fail to Remain		15	15.7	11	11.5	-26.7
Impaired/Refuse		32	33.5	28	29.3	-12.5

Calls for Service (YTD January 31)

					2011				2012				% Change 2010 - 2011(4)
					Vic	% of Total	Esq	% of Total	Vic	% of Total	Esq	% of Total	
Priority 1: Emergency, dispatch immediate, high probability of death or grievous bodily harm					240	83.0	49	17.0	243	86.2	39	13.8	-2.7
Priority 2: Urgent, dispatch immediate, not life threatening in nature					663	86.3	105	13.7	700	89.5	82	10.5	1.5
Priority 3: Routine: non-urgent					1432	91.0	142	9.0	1397	88.1	189	11.9	0.9
Priority 4: May or may not be dispatched, dependant on agency					1038	88.0	142	12.0	865	92.1	74	7.9	-20.1
Other Alternative					1	100.0	0	0.0	0	-	0	-	-
Total - All Priorities					3374	88.5	438	11.5	3205	89.3	384	10.7	-5.7

**Please Note the above table was calculated according to Municipality – the table below was calculated according to Neighbourhood. As a result the numbers may not correspond.

Calls for Service by Priority and Neighbourhood (January 31)

<i>Neighbourhood</i>	<i>Priority 1</i>	<i>Priority 2</i>	<i>Priority 3</i>	<i>Priority 4</i>	<i>Other</i>	<i>Total</i>	<i>% of Total City</i>	<i>% of Grand total</i>
COLVILLE	1	1	4	3		9	2.3	0.2
DEVONSHIRE	4	4	14	6		28	7.3	0.8
DN1		1	1	1		3	0.8	0.1
ESQUIMALT VILLAGE	7	33	58	28		126	32.8	3.5
PANHANDLE		4	10	7		21	5.5	0.6
PARKLANDS	4	4	6	3		17	4.4	0.5
ROCKHEIGHTS	3	9	22	2		36	9.4	1.0
SAXE POINT	2	4	6	7		19	4.9	0.5
SELKIRK	4	11	17	4		36	9.4	1.0
WEST BAY	14	11	51	13		89	23.2	2.5
TANK FARM	0	0	0	0		0	0.0	0.0
ESQUIMALT TOTAL	39	82	189	74		384	100.0	10.6
BURNSIDE GORGE	57	157	238	104		556	17.4	15.4
DOWNTOWN	36	144	324	192		696	21.8	19.3
FAIRFIELD	24	44	71	60		199	6.2	5.5
FERNWOOD	21	41	97	76		235	7.3	6.5
GONZALES	2	7	17	9		35	1.1	1.0
HARRIS GREEN	15	46	151	68		280	8.8	7.8
HILLSIDE QUADRA	19	57	83	46		205	6.4	5.7
JAMES BAY	15	49	64	46		174	5.4	4.8
NORTH JUBILEE	6	7	19	10		42	1.3	1.2
NORTH PARK	17	58	164	131		370	11.6	10.2
OAKLANDS	15	28	59	47		149	4.7	4.1
ROCKLAND	1	9	10	10		30	0.9	0.8
SOUTH JUBILEE	5	20	28	20		73	2.3	2.0
VIC WEST	10	33	70	40		153	4.8	4.2
UNKNOWN	0	1	3	4		1	0.0	0.0
VICTORIA TOTAL	243	701	1398	863		3198	100.0	88.6
GRAND TOTAL	284	787	1597	943		3611		100.0
