



ARCHIVED - Archiving Content

Archived Content

Information identified as archived is provided for reference, research or recordkeeping purposes. It is not subject to the Government of Canada Web Standards and has not been altered or updated since it was archived. Please contact us to request a format other than those available.

ARCHIVÉE - Contenu archivé

Contenu archivé

L'information dont il est indiqué qu'elle est archivée est fournie à des fins de référence, de recherche ou de tenue de documents. Elle n'est pas assujettie aux normes Web du gouvernement du Canada et elle n'a pas été modifiée ou mise à jour depuis son archivage. Pour obtenir cette information dans un autre format, veuillez communiquer avec nous.

This document is archival in nature and is intended for those who wish to consult archival documents made available from the collection of Public Safety Canada.

Some of these documents are available in only one official language. Translation, to be provided by Public Safety Canada, is available upon request.

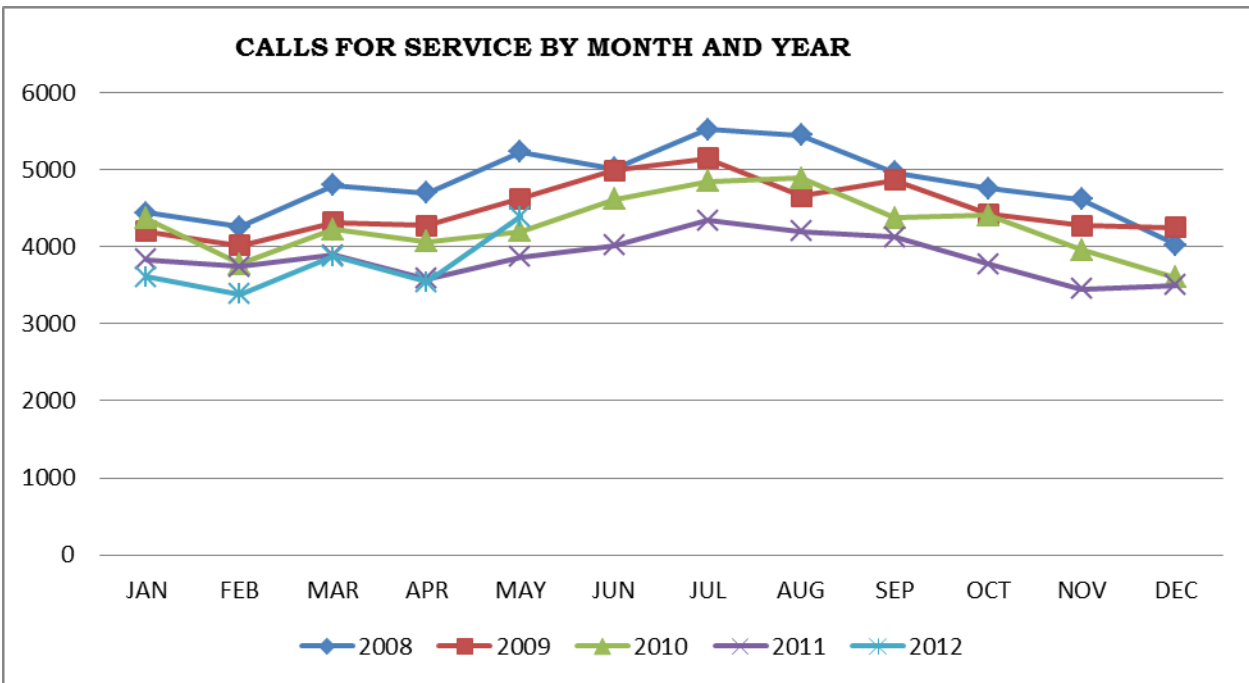
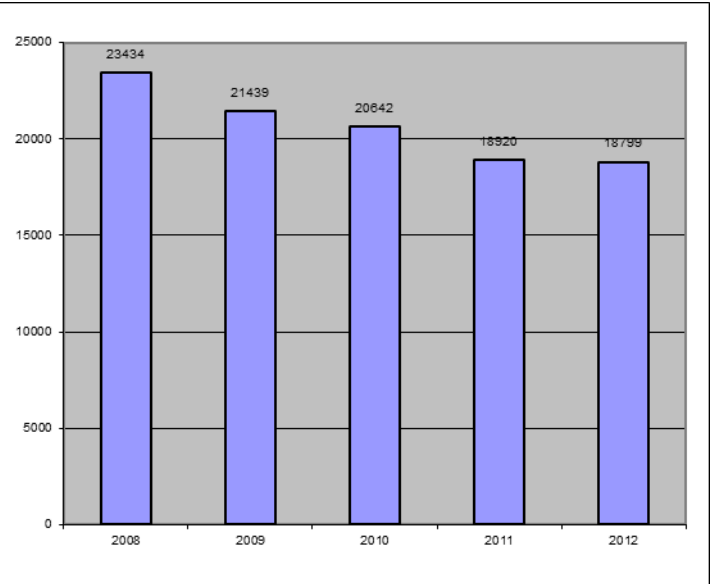
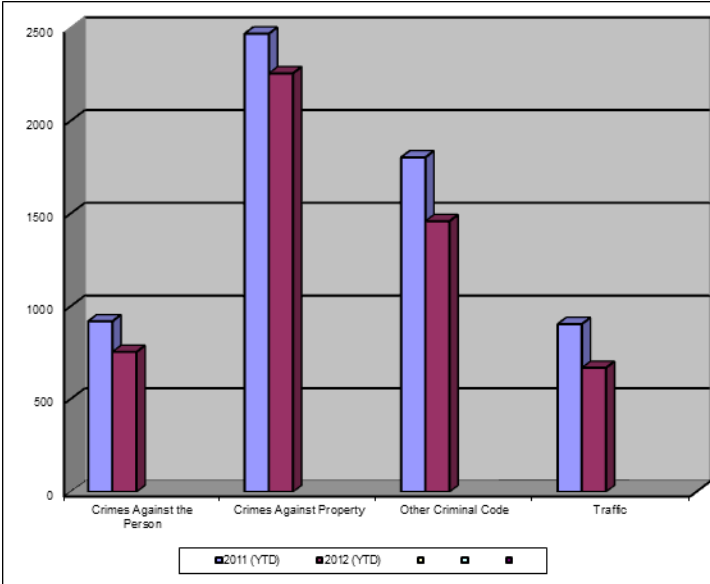
Le présent document a une valeur archivistique et fait partie des documents d'archives rendus disponibles par Sécurité publique Canada à ceux qui souhaitent consulter ces documents issus de sa collection.

Certains de ces documents ne sont disponibles que dans une langue officielle. Sécurité publique Canada fournira une traduction sur demande.

Crime Trends for Victoria and Esquimalt : January - May, 2011 - 2012 (1,2)

Key Crime Trends

Total Calls for Service (Annual)



Key Crime Trends (YTD- January - May)

	2011		2012		% Change 2011 - 2012(4)
	Jan-May	Rate(3)	Jan-May	Rate(3)	
Crime Against the Person	920	963.4	755	790.6	-17.9
Crimes Against Property	2471	2587.5	2257	2363.4	-8.7
Other Criminal Code of Canada Offences	1804	1889.0	1460	1528.8	-19.1
Total CCC Offences Excluding Traffic	5195	5439.8	4472	4682.8	-13.9
Traffic Offences	904	946.6	669	700.5	-26.0
Total CCC Offences and Traffic	6099	6386.5	5141	5383.3	-15.7

Crimes Against Person (YTD January - May)

	2011		2012		% Change 2011 - 2012(4)
	Jan-May	Rate(3)	Jan-May	Rate(3)	
Homicide	0	0.0	0	0.0	-
Attempted Murder	1	1.0	0	0.0	-
Robbery/Extortion	75	78.5	63	66.0	-16.0
Assault	543	568.6	501	524.6	-7.7
Sexual Assault	57	59.7	51	53.4	-10.5
Criminal Harassment	47	49.2	18	18.8	-61.7
Uttering Threats	195	204.2	121	126.7	-37.9
Arson - Disregard for Life	2	2.1	1	1.0	-50.0

Notes:

1. The data presented is taken from the Police Records Information Management Environment (PRIME) database. Data that is coded and analyzed according to the requirements of the violation coding structure for Uniform Crime Reporting (UCR) survey as set up by Statistics Canada.
2. The crime statistics published in this report are accurate on the day that they were analyzed. Due to ongoing police investigation and internal data quality control efforts, this information is subject to change, including addition, deletion and reclassification of any and all data. Rates and percentages have been rounded.
3. Rate is calculated on a per 100,000 rate for each month and year. As provided by Capital Region District, the 2011 and 2012 population is estimated at 100,657.
4. The % change is based on the actual values and is subject to (2).

Crimes Against Property (YTD January - May)

		2011		2012		% Change 2011 - 2012(4)
		Jan-May	Rate(3)	Jan-May	Rate(3)	
B&E Business		79	82.7	107	112.0	35.4
B&E-Other		64	67.0	89	93.2	39.1
B&E-Residence		143	149.7	183	191.6	28.0
Fraud		172	180.1	133	139.3	-22.7
Possession of Stolen Property/Break and Enter Tools		48	50.3	33	34.6	-31.3
Theft Over \$5000		9	9.4	10	10.5	11.1
Theft Under \$5000		359	375.9	477	499.5	32.9
Theft from Motor Vehicle		977	1023.0	549	574.9	-43.8
Theft of Motor Vehicle		90	94.2	103	107.9	14.4
Take Vehicle without Consent		3	3.1	6	6.3	100.0
Theft of Bicycle		95	99.5	166	173.8	74.7
Shoplifting		425	445.0	394	412.6	-7.3
Arson		3	3.1	5	5.2	66.7

Other Criminal Code Offences (YTD January - May)

		2011		2012		% Change 2011 - 2012(4)
		Jan-May	Rate(3)	Jan-May	Rate(3)	
Bail Violations/Breach of Probation		220	230.4	280	293.2	27.3
Domestic Dispute		364	381.2	311	325.7	-14.6
Drugs		406	425.1	329	344.5	-19.0
Indecent Acts		52	54.5	12	12.6	-76.9
Mischief		664	695.3	478	500.5	-28.0
Offensive Weapons		98	102.6	50	52.4	-49.0

Traffic Offences (YTD January - May)

		2011		2012		% Change 2011 - 2012(4)
		Jan-May	Rate(3)	Jan-May	Rate(3)	
Traffic - Collisions		378	395.8	285	298.4	-24.6
Traffic - Fatal		0	0.0	1	1.0	-
Traffic - Other		224	234.6	240	251.3	7.1
Dangerous Operation of Motor Vehicle		4	4.2	4	4.2	0.0
Fail to Remain		90	94.2	56	58.6	-37.8
Impaired/Refuse		208	217.8	142	148.7	-31.7

Calls for Service (YTD January - May)

					2011				2012				% Change 2011 - 2012(4)
					Vic	% of Total	Esq	% of Total	Vic	% of Total	Esq	% of Total	
Priority 1: Emergency, dispatch immediate, high probability of death or grievous bodily harm					1237	83.8	239	16.2	1155	82.9	239	17.1	-5.7
Priority 2: Urgent, dispatch immediate, not life threatening in nature					3565	87.9	490	12.1	4068	89.7	466	10.3	11.6
Priority 3: Routine: non-urgent					7219	90.6	750	9.4	7184	89.8	819	10.2	0.5
Priority 4: May or may not be dispatched, dependant on agency					4785	90.0	529	10.0	4286	90.0	475	10.0	-10.3
Other Alternative					2	66.7	1	33.3	5	-	0	0.0	66.7
Total - All Priorities					16808	89.3	2009	10.7	16698	89.3	1999	10.7	-0.6

**Please Note the above table was calculated according to Municipality with only Victoria and Esquimalt calls calculated. The table below was calculated according to Neighbourhood. The 'Grand Total' includes all calls attended notwithstanding jurisdiction. As a result the numbers may not correspond.

Calls for Service by Priority and Neighbourhood (January - May)

<i>Neighbourhood</i>	<i>Priority 1</i>	<i>Priority 2</i>	<i>Priority 3</i>	<i>Priority 4</i>	<i>Other</i>	<i>Total</i>	<i>% of Total City</i>	<i>% of Grand total</i>
COLVILLE	7	15	35	18		75	3.8	0.4
DEVONSHIRE	16	21	50	33		120	6.0	0.6
DN1		4	2	3		9	0.5	0.0
ESQUIMALT VILLAGE	74	164	259	146		643	32.2	3.4
PANHANDLE	9	30	39	32		110	5.5	0.6
PARKLANDS	13	14	28	15		70	3.5	0.4
ROCKHEIGHTS	28	41	85	33		187	9.4	1.0
SAXE POINT	7	24	61	41		133	6.7	0.7
SELKIRK	22	60	73	47		202	10.1	1.1
WEST BAY	63	92	188	106		449	22.5	2.4
TANK FARM	0	0	0	0	0	0	0.0	0.0
ESQUIMALT TOTAL	239	465	820	474	0	1998	100.0	10.6
BURNSIDE GORGE	250	738	1231	607	1	2827	16.9	15.0
DOWNTOWN	178	887	1631	971	1	3668	21.9	19.5
FAIRFIELD	76	196	448	271	1	992	5.9	5.3
FERNWOOD	95	238	376	280		989	5.9	5.3
GONZALES	12	35	78	49		174	1.0	0.9
HARRIS GREEN	74	309	643	319		1345	8.0	7.2
HILLSIDE QUADRA	118	234	469	235		1056	6.3	5.6
JAMES BAY	79	237	403	258		977	5.8	5.2
NORTH JUBILEE	25	55	87	57		224	1.3	1.2
NORTH PARK	80	557	891	693	1	2222	13.3	11.8
OAKLANDS	67	147	292	166		672	4.0	3.6
ROCKLAND	10	71	66	56	1	204	1.2	1.1
SOUTH JUBILEE	28	159	179	99		465	2.8	2.5
VIC WEST	63	201	384	227		875	5.2	4.7
UNKNOWN		3	21	6		30	0.2	0.2
VICTORIA TOTAL	1155	4067	7199	4294	5	16720	100.0	88.9
GRAND TOTAL	1403	4563	8054	4774	4	18799		100.0

