



ARCHIVED - Archiving Content

Archived Content

Information identified as archived is provided for reference, research or recordkeeping purposes. It is not subject to the Government of Canada Web Standards and has not been altered or updated since it was archived. Please contact us to request a format other than those available.

ARCHIVÉE - Contenu archivé

Contenu archivé

L'information dont il est indiqué qu'elle est archivée est fournie à des fins de référence, de recherche ou de tenue de documents. Elle n'est pas assujettie aux normes Web du gouvernement du Canada et elle n'a pas été modifiée ou mise à jour depuis son archivage. Pour obtenir cette information dans un autre format, veuillez communiquer avec nous.

This document is archival in nature and is intended for those who wish to consult archival documents made available from the collection of Public Safety Canada.

Some of these documents are available in only one official language. Translation, to be provided by Public Safety Canada, is available upon request.

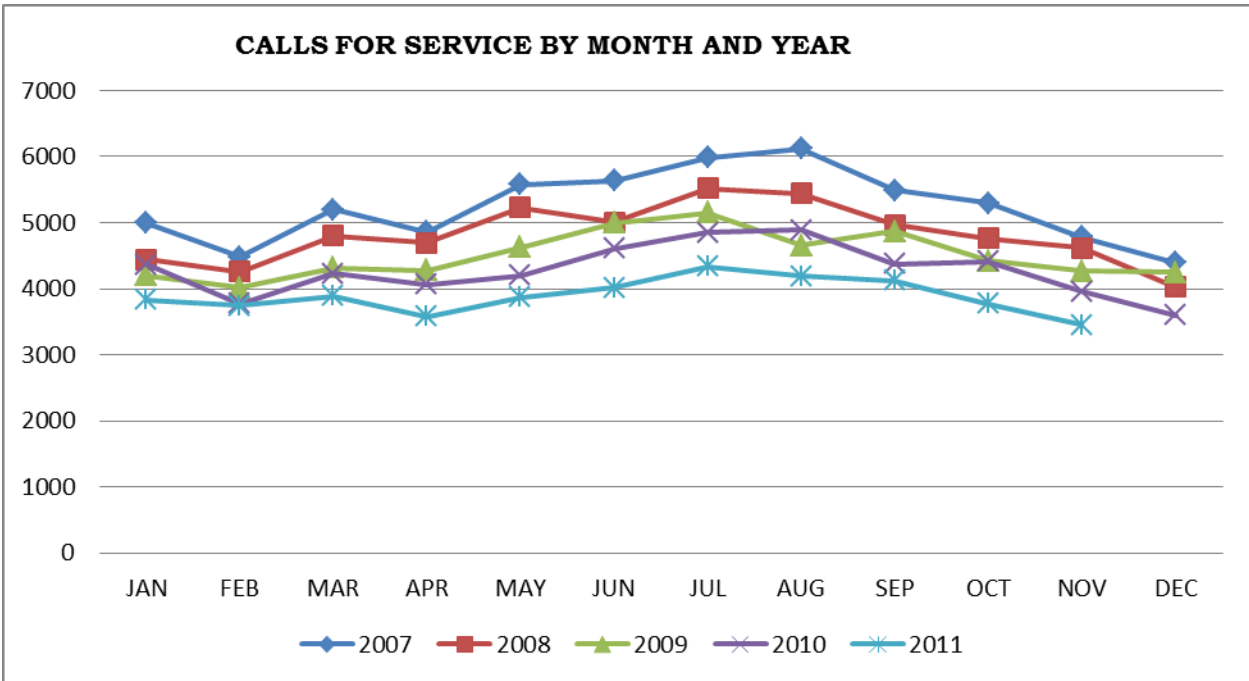
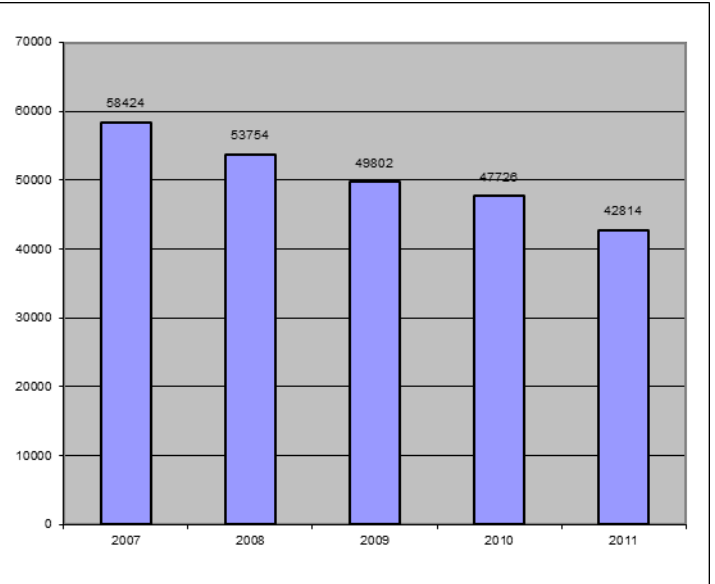
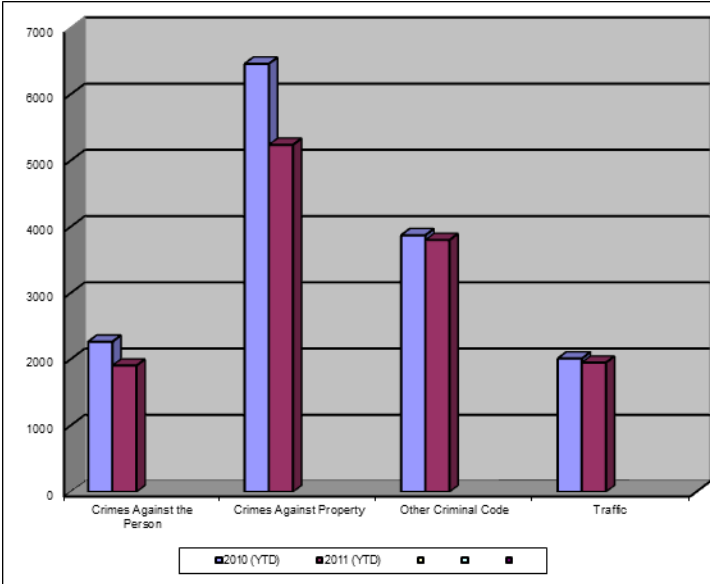
Le présent document a une valeur archivistique et fait partie des documents d'archives rendus disponibles par Sécurité publique Canada à ceux qui souhaitent consulter ces documents issus de sa collection.

Certains de ces documents ne sont disponibles que dans une langue officielle. Sécurité publique Canada fournira une traduction sur demande.

Crime Trends for Victoria and Esquimalt : January to November 30, 2010 – 2011 (1,2)

Key Crime Trends

Total Calls for Service (Annual)



Key Crime Trends (YTD- January – November 30)

	2010		2011		% Change 2010 - 2011(4)
	Jan-Nov	Rate(3)	Jan-Nov	Rate(3)	
Crime Against the Person	2267	2373.8	1907	1996.9	-15.9
Crimes Against Property	6464	6768.7	5240	5487.0	-18.9
Other Criminal Code of Canada Offenses	3875	4057.6	3803	3982.2	-1.9
Total CCC Offences Excluding Traffic	12606	13200.1	10950	11466.1	-13.1
Traffic Offences	2013	2107.9	1952	2044.0	-3.0
Total CCC Offences and Traffic	14619	15308.0	12902	13510.1	-11.7

Crimes Against Person (YTD January – November 30)

	2010		2011		% Change 2010 - 2011(4)
	Jan-Nov	Rate(3)	Jan-Nov	Rate(3)	
Homicide	1	1.0	2	2.1	100.0
Attempted Murder	1	1.0	2	2.1	-
Robbery/Extortion	203	212.6	155	162.3	-23.6
Assault	1470	1539.3	1218	1275.4	-17.1
Sexual Assault	114	119.4	94	98.4	-17.5
Criminal Harassment	81	84.8	81	84.8	0.0
Uttering Threats	397	415.7	355	371.7	-10.6
Arson - Disregard for Life	0	0.0	2	2.1	-

Notes:

1. The data presented is taken from the Police Records Information Management Environment (PRIME) database. Data that is coded and analyzed according to the requirements of the violation coding structure for Uniform Crime Reporting (UCR) survey as set up by Statistics Canada.
2. The crime statistics published in this report are accurate on the day that they were analyzed. Due to ongoing police investigation and internal data quality control efforts, this information is subject to change, including addition, deletion and reclassification of any and all data. Rates and percentages have been rounded.
3. Rate is calculated on a per 100,000 rate for each month and year. As provided by Capital Region District, the 2010 and 2011 population is estimated at 100,657.
4. The % change is based on the actual values and is subject to (2).

Crimes Against Property (YTD January – November 30)

			2010		2011		% Change 2010 - 2011(4)
			Jan-Nov	Rate(3)	Jan-Nov	Rate(3)	
B&E Business			167	174.9	208	217.8	24.6
B&E-Other			159	166.5	145	151.8	-8.8
B&E-Residence			533	558.1	342	358.1	-35.8
Fraud			641	671.2	377	394.8	-41.2
Possession of Stolen Property/Break and Enter Tools			135	141.4	77	80.6	-43.0
Theft Over \$5000			26	27.2	19	19.9	-26.9
Theft Under \$5000			1095	1146.6	899	941.4	-17.9
Theft from Motor Vehicle			1915	2005.3	1732	1813.6	-9.6
Theft of Motor Vehicle			300	314.1	172	180.1	-42.7
Take Vehicle without Consent			24	25.1	9	9.4	-62.5
Theft of Bicycle			323	338.2	312	326.7	-3.4
Shoplifting			1120	1172.8	927	970.7	-17.2
Arson			26	27.2	19	19.9	-26.9

Other Criminal Code Offences (YTD January – November 30)

			2010		2011		% Change 2010 - 2011(4)
			Jan-Nov	Rate(3)	Jan-Nov	Rate(3)	
Bail Violations/Breach of Probation			641	671.2	491	514.1	-23.4
Domestic Dispute			780	816.8	789	826.2	1.2
Drugs			849	889.0	875	916.2	3.1
Indecent Acts			60	62.8	94	98.4	56.7
Mischief			1382	1447.1	1380	1445.0	-0.1
Offensive Weapons			163	170.7	174	182.2	6.7

Traffic Offences (YTD January – November 30)

			2010		2011		% Change 2010 - 2011(4)
			Jan-Nov	Rate(3)	Jan-Nov	Rate(3)	
Traffic - Collisions			836	875.4	801	838.8	-4.2
Traffic - Fatal			1	1.0	1	1.0	-
Traffic - Other			382	400.0	522	546.6	36.6
Dangerous Operation of Motor Vehicle			76	79.6	21	22.0	-72.4
Fail to Remain			282	295.3	187	195.8	-33.7
Impaired/Refuse			436	456.5	420	439.8	-3.7

Calls for Service (YTD January – November 30)

					2010				2011				% Change 2010 - 2011(4)
					Vic	% of Total	Esq	% of Total	Vic	% of Total	Esq	% of Total	
Priority 1: Emergency, dispatch immediate, high probability of death or grievous bodily harm					2760	82.2	596	17.8	2771	84.3	516	15.7	-2.3
Priority 2: Urgent, dispatch immediate, not life threatening in nature					9206	88.9	1151	11.1	8215	88.7	1043	11.3	-10.8
Priority 3: Routine: non- urgent					17796	89.7	2046	10.3	16496	90.6	1715	9.4	-9.0
Priority 4: May or may not be dispatched, dependant on agency					12531	92.2	1058	7.8	10806	91.4	1019	8.6	-13.7
Other Alternative					15	88.2	2	11.8	7	77.8	2	22.2	-47.1
Total - All Priorities					42308	89.7	4853	10.3	38295	89.9	4295	10.1	-10.3

**Please Note the above table was calculated according to Municipality – the table below was calculated according to Neighbourhood. As a result the numbers may not correspond.

Calls for Service by Priority and Neighbourhood: January – November 30

<i>Neighbourhood</i>	<i>Priority 1</i>	<i>Priority 2</i>	<i>Priority 3</i>	<i>Priority 4</i>	<i>Other</i>	<i>Total</i>	<i>% of Total City</i>	<i>% of Grand total</i>
COLVILLE	10	37	52	47		146	3.4	0.3
DEVONSHIRE	30	70	108	112		320	7.4	0.8
DN1	1	2	8	3		14	0.3	0.0
ESQUIMALT VILLAGE	132	316	498	265		1211	28.2	2.8
PANHANDLE	26	60	114	63		263	6.1	0.6
PARKLANDS	20	22	53	28		123	2.9	0.3
ROCKHEIGHTS	59	104	184	115	1	463	10.8	1.1
SAXE POINT	43	65	151	89		348	8.1	0.8
SELKIRK	57	122	168	87	1	435	10.1	1.0
WEST BAY	139	245	382	211		977	22.7	2.3
TANK FARM	0	0	0	0	0	0	0.0	0.0
ESQUIMALT TOTAL	517	1043	1718	1020	2	4300	100.0	10.1
BURNSIDE GORGE	581	1663	2897	1513		6654	17.4	15.6
DOWNTOWN	416	1821	3510	2614		8361	21.8	19.6
FAIRFIELD	250	503	1023	684	1	2461	6.4	5.8
FERNWOOD	192	545	1127	749		2613	6.8	6.1
GONZALES	34	80	302	140	1	557	1.5	1.3
HARRIS GREEN	190	640	1268	649	2	2749	7.2	6.5
HILLSIDE QUADRA	240	502	985	609	1	2337	6.1	5.5
JAMES BAY	215	613	973	711		2512	6.6	5.9
NORTH JUBILEE	69	117	183	110		479	1.3	1.1
NORTH PARK	205	673	2055	1510		4443	11.6	10.4
OAKLANDS	146	310	748	558	1	1763	4.6	4.1
ROCKLAND	28	79	156	149	1	413	1.1	1.0
SOUTH JUBILEE	59	292	416	262		1029	2.7	2.4
VIC WEST	146	379	852	546		1923	5.0	4.5
UNKNOWN	0	0	1	2		3	0.0	0.0
VICTORIA TOTAL	2771	8217	16496	10806	7	38297	100.0	89.9
GRAND TOTAL	3288	9260	18214	11826	9	42597		100.0
