



ARCHIVED - Archiving Content

Archived Content

Information identified as archived is provided for reference, research or recordkeeping purposes. It is not subject to the Government of Canada Web Standards and has not been altered or updated since it was archived. Please contact us to request a format other than those available.

ARCHIVÉE - Contenu archivé

Contenu archivé

L'information dont il est indiqué qu'elle est archivée est fournie à des fins de référence, de recherche ou de tenue de documents. Elle n'est pas assujettie aux normes Web du gouvernement du Canada et elle n'a pas été modifiée ou mise à jour depuis son archivage. Pour obtenir cette information dans un autre format, veuillez communiquer avec nous.

This document is archival in nature and is intended for those who wish to consult archival documents made available from the collection of Public Safety Canada.

Some of these documents are available in only one official language. Translation, to be provided by Public Safety Canada, is available upon request.

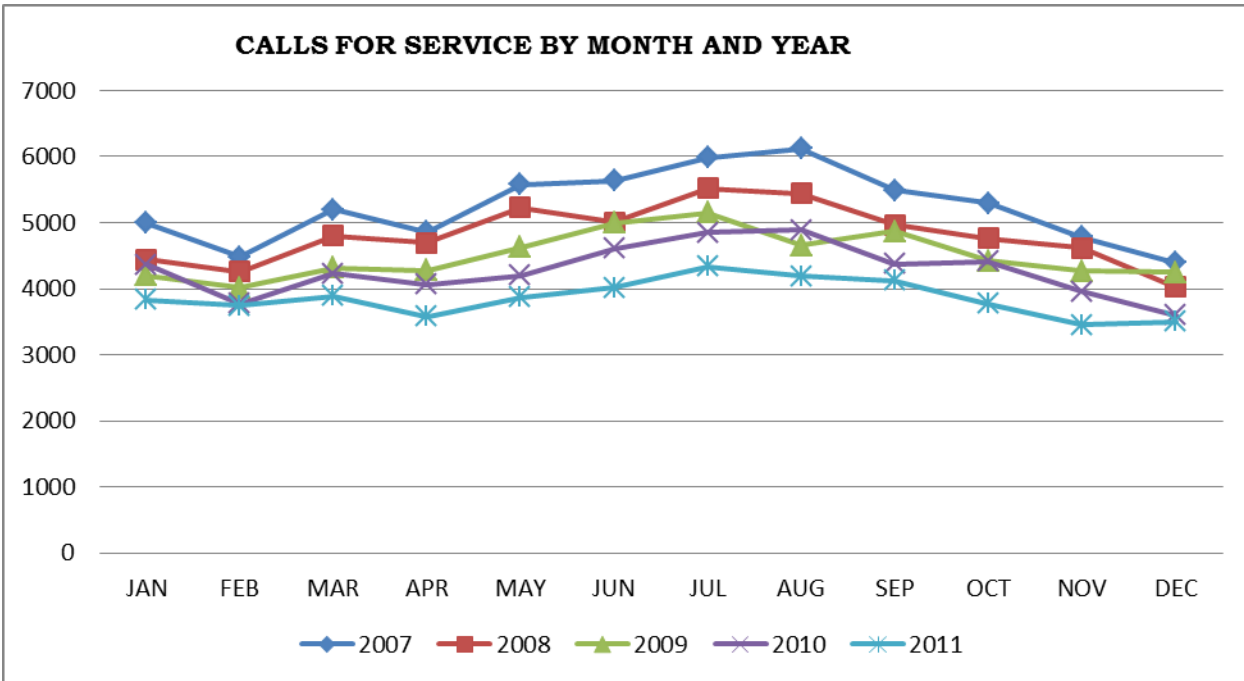
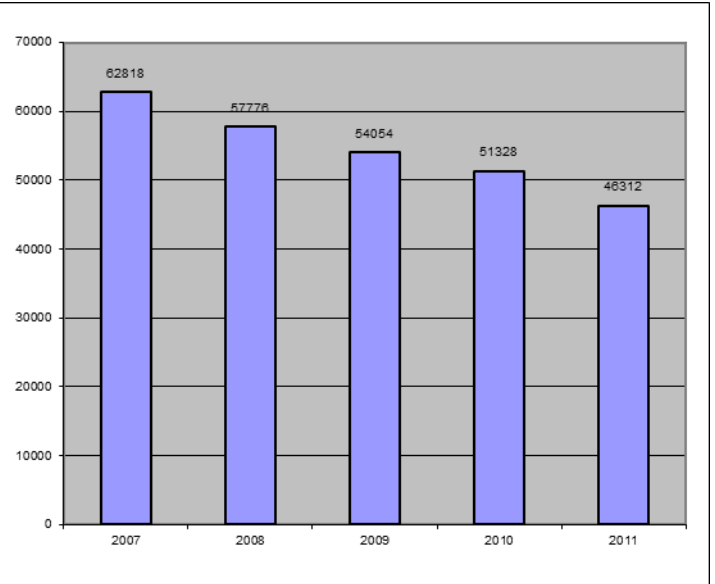
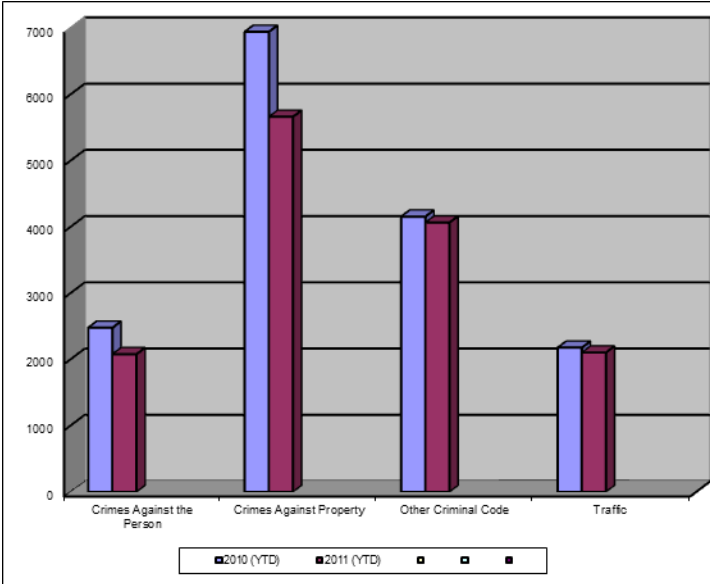
Le présent document a une valeur archivistique et fait partie des documents d'archives rendus disponibles par Sécurité publique Canada à ceux qui souhaitent consulter ces documents issus de sa collection.

Certains de ces documents ne sont disponibles que dans une langue officielle. Sécurité publique Canada fournira une traduction sur demande.

Crime Trends for Victoria and Esquimalt : January to December 31, 2010 - 2011 (1,2)

Key Crime Trends

Total Calls for Service (Annual)



Key Crime Trends (YTD- January – December 31)

	2010		2011		% Change 2010 - 2011(4)
	Jan-Dec	Rate(3)	Jan-Dec	Rate(3)	
Crime Against the Person	2478	2594.8	2079	2177.0	-16.1
Crimes Against Property	6946	7273.4	5663	5929.9	-18.5
Other Criminal Code of Canada Offenses	4156	4351.9	4067	4258.7	-2.1
Total CCC Offences Excluding Traffic	13580	14220.0	11809	12365.6	-13.0
Traffic Offences	2177	2279.6	2104	2203.2	-3.4
Total CCC Offences and Traffic	15757	16499.6	13913	14568.7	-11.7

Crimes Against Person (YTD January – December 31)

	2010		2011		% Change 2010 - 2011(4)
	Jan-Dec	Rate(3)	Jan-Dec	Rate(3)	
Homicide	1	1.0	2	2.1	100.0
Attempted Murder	1	1.0	2	2.1	-
Robbery/Extortion	221	231.4	167	174.9	-24.4
Assault	1574	1648.2	1296	1357.1	-17.7
Sexual Assault	124	129.8	112	117.3	-9.7
Criminal Harassment	86	90.1	83	86.9	-3.5
Uttering Threats	471	493.2	417	436.7	-11.5
Arson - Disregard for Life	0	0.0	2	2.1	-

Notes:

1. The data presented is taken from the Police Records Information Management Environment (PRIME) database. Data that is coded and analyzed according to the requirements of the violation coding structure for Uniform Crime Reporting (UCR) survey as set up by Statistics Canada.
2. The crime statistics published in this report are accurate on the day that they were analyzed. Due to ongoing police investigation and internal data quality control efforts, this information is subject to change, including addition, deletion and reclassification of any and all data. Rates and percentages have been rounded.
3. Rate is calculated on a per 100,000 rate for each month and year. As provided by Capital Region District, the 2010 and 2011 population is estimated at 100,657.
4. The % change is based on the actual values and is subject to (2).

Crimes Against Property (YTD January – December 31)

		2010		2011		% Change 2010 - 2011(4)
		Jan-Dec	Rate(3)	Jan-Dec	Rate(3)	
B&E Business		179	187.4	229	239.8	27.9
B&E-Other		173	181.2	163	170.7	-5.8
B&E-Residence		552	578.0	376	393.7	-31.9
Fraud		677	708.9	407	426.2	-39.9
Possession of Stolen Property/Break and Enter Tools		141	147.6	82	85.9	-41.8
Theft Over \$5000		26	27.2	18	18.8	-30.8
Theft Under \$5000		1181	1236.7	1003	1050.3	-15.1
Theft from Motor Vehicle		2099	2197.9	1813	1898.4	-13.6
Theft of Motor Vehicle		321	336.1	187	195.8	-41.7
Take Vehicle without Consent		24	25.1	6	6.3	-75.0
Theft of Bicycle		342	358.1	334	349.7	-2.3
Shoplifting		1201	1257.6	1020	1068.1	-15.1
Arson		26	27.2	23	24.1	-11.5

Other Criminal Code Offences (YTD January – December 31)

		2010		2011		% Change 2010 - 2011(4)
		Jan-Dec	Rate(3)	Jan-Dec	Rate(3)	
Bail Violations/Breach of Probation		682	714.1	526	550.8	-22.9
Domestic Dispute		840	879.6	847	886.9	0.8
Drugs		914	957.1	944	988.5	3.3
Indecent Acts		64	67.0	96	100.5	50.0
Mischief		1489	1559.2	1489	1559.2	0.0
Offensive Weapons		167	174.9	165	172.8	-1.2

Traffic Offences (YTD January – December 31)

		2010		2011		% Change 2010 - 2011(4)
		Jan-Dec	Rate(3)	Jan-Dec	Rate(3)	
Traffic - Collisions		899	941.4	877	918.3	-2.4
Traffic - Fatal		1	1.0	1	1.0	-
Traffic - Other		422	441.9	575	602.1	36.3
Dangerous Operation of Motor Vehicle		79	82.7	21	22.0	-73.4
Fail to Remain		301	315.2	196	205.2	-34.9
Impaired/Refuse		475	497.4	434	454.5	-8.6

Calls for Service (YTD January – December 31)

					2010				2011				% Change 2010 - 2011(4)
					Vic	% of Total	Esq	% of Total	Vic	% of Total	Esq	% of Total	
Priority 1: Emergency, dispatch immediate, high probability of death or grievous bodily harm					2994	82.7	627	17.3	2981	84.4	550	15.6	-2.6
Priority 2: Urgent, dispatch immediate, not life threatening in nature					9894	88.9	1241	11.1	8971	88.8	1126	11.2	-9.5
Priority 3: Routine: non- urgent					19184	89.8	2181	10.2	17852	90.5	1864	9.5	-8.5
Priority 4: May or may not be dispatched, dependant on agency					13438	92.0	1164	8.0	11631	91.5	1087	8.5	-13.6
Other Alternative					15	88.2	2	11.8	8	80.0	2	20.0	-33.3
Total - All Priorities					45525	89.7	5214	10.3	41443	90.0	4629	10.0	-9.8

**Please Note the above table was calculated according to Municipality – the table below was calculated according to Neighbourhood. As a result the numbers may not correspond.

Calls for Service by Priority and Neighbourhood (January – December 31)

<i>Neighbourhood</i>	<i>Priority 1</i>	<i>Priority 2</i>	<i>Priority 3</i>	<i>Priority 4</i>	<i>Other</i>	<i>Total</i>	<i>% of Total City</i>	<i>% of Grand total</i>
COLVILLE	10	44	56	48		158	3.4	0.3
DEVONSHIRE	34	73	124	119		350	7.5	0.8
DN1	1	2	9	3		15	0.3	0.0
ESQUIMALT VILLAGE	137	336	548	282		1303	28.1	2.8
PANHANDLE	29	65	124	69		287	6.2	0.6
PARKLANDS	22	23	58	33		136	2.9	0.3
ROCKHEIGHTS	62	114	201	120	1	498	10.7	1.1
SAXE POINT	45	72	157	93		367	7.9	0.8
SELKIRK	60	127	180	95	1	463	10.0	1.0
WEST BAY	151	269	411	226		1057	22.8	2.3
TANK FARM		2				2	0.0	0.0
ESQUIMALT TOTAL	551	1127	1868	1088	2	4636	100.0	10.1
BURNSIDE GORGE	623	1818	3149	1633		7223	17.4	15.7
DOWNTOWN	455	1981	3811	2807		9054	21.8	19.6
FAIRFIELD	212	598	1213	810		2833	6.8	6.1
FERNWOOD	273	534	1104	726	1	2638	6.4	5.7
GONZALES	37	87	315	149	1	589	1.4	1.3
HARRIS GREEN	201	707	1386	717	2	3013	7.3	6.5
HILLSIDE QUADRA	257	552	1065	648	2	2524	6.1	5.5
JAMES BAY	227	656	1051	757		2691	6.5	5.8
NORTH JUBILEE	71	139	197	115		522	1.3	1.1
NORTH PARK	222	736	2204	1621		4783	11.5	10.4
OAKLANDS	154	344	811	608	1	1918	4.6	4.2
ROCKLAND	30	93	168	170	1	462	1.1	1.0
SOUTH JUBILEE	62	319	449	278		1108	2.7	2.4
VIC WEST	157	409	927	590		2083	5.0	4.5
UNKNOWN			1	2		3	0.0	0.0
VICTORIA TOTAL	2981	8973	17851	11631	8	41444	100.0	89.9
GRAND TOTAL	3532	10100	19719	12719	10	46080		100.0