



ARCHIVED - Archiving Content

Archived Content

Information identified as archived is provided for reference, research or recordkeeping purposes. It is not subject to the Government of Canada Web Standards and has not been altered or updated since it was archived. Please contact us to request a format other than those available.

ARCHIVÉE - Contenu archivé

Contenu archivé

L'information dont il est indiqué qu'elle est archivée est fournie à des fins de référence, de recherche ou de tenue de documents. Elle n'est pas assujettie aux normes Web du gouvernement du Canada et elle n'a pas été modifiée ou mise à jour depuis son archivage. Pour obtenir cette information dans un autre format, veuillez communiquer avec nous.

This document is archival in nature and is intended for those who wish to consult archival documents made available from the collection of Public Safety Canada.

Some of these documents are available in only one official language. Translation, to be provided by Public Safety Canada, is available upon request.

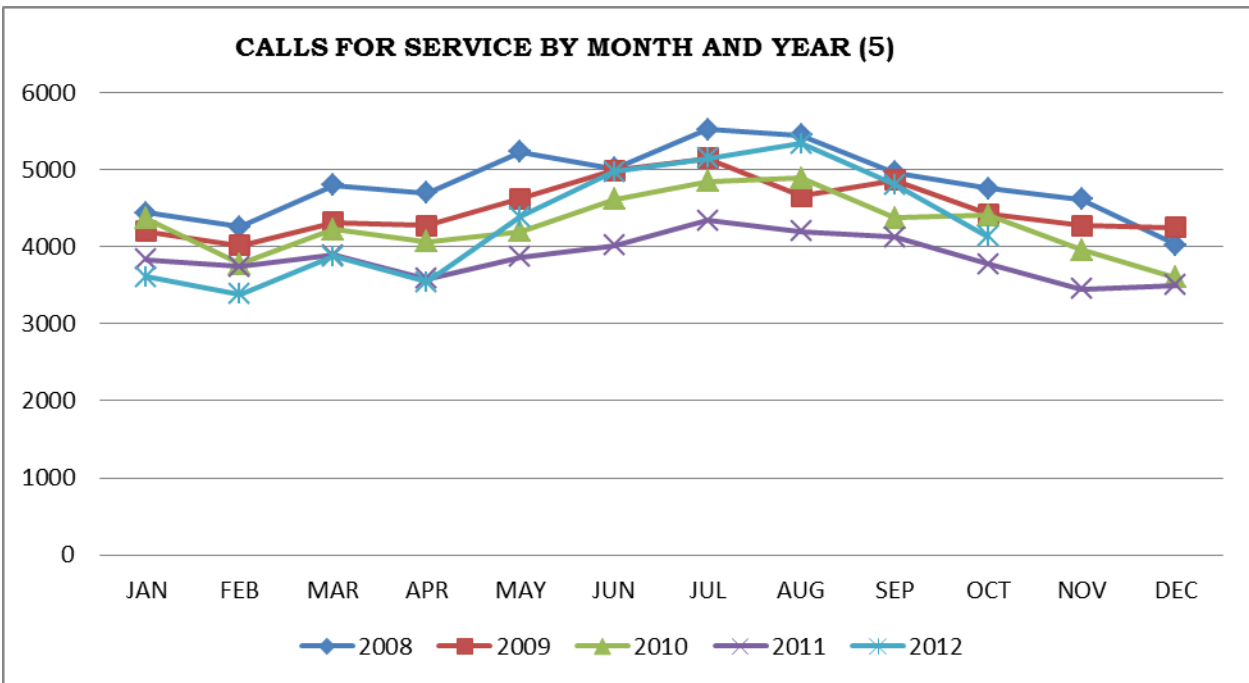
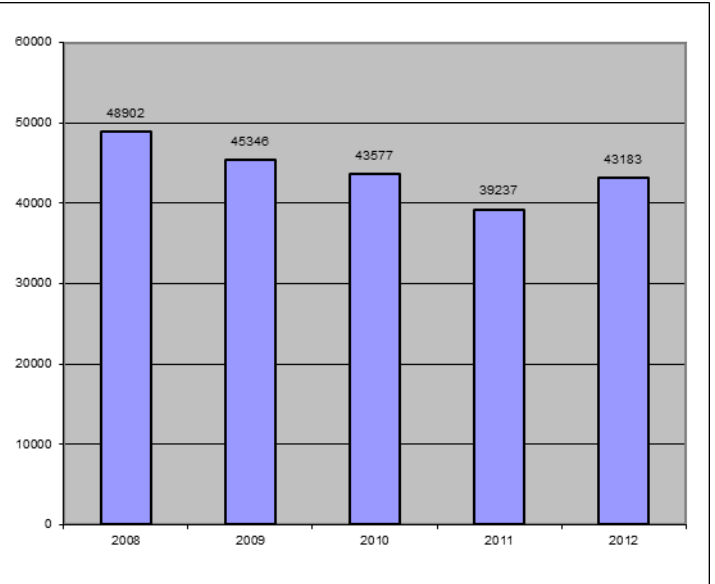
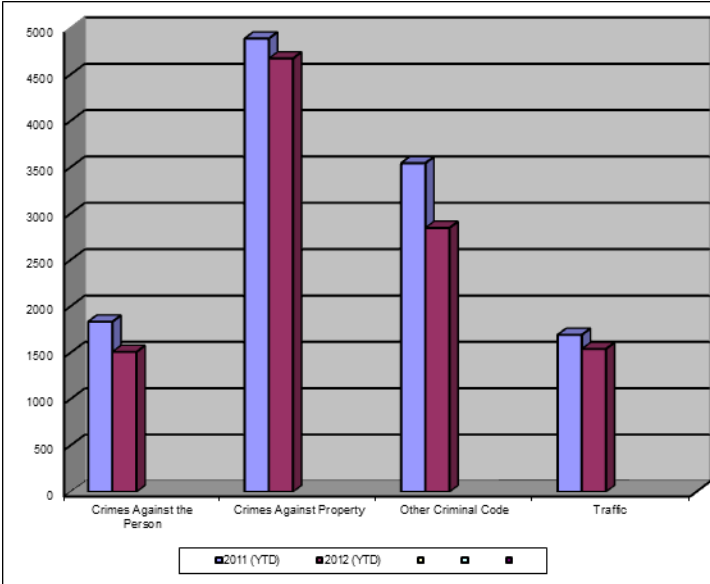
Le présent document a une valeur archivistique et fait partie des documents d'archives rendus disponibles par Sécurité publique Canada à ceux qui souhaitent consulter ces documents issus de sa collection.

Certains de ces documents ne sont disponibles que dans une langue officielle. Sécurité publique Canada fournira une traduction sur demande.

Crime Trends for Victoria and Esquimalt: January - October, 2011 - 2012 (1, 2)

Key Crime Trends

Total Calls for Service (Annual)(5)



Key Crime Trends (YTD- January - October)

	2011		2012		% Change 2011 - 2012(4)
	Jan-Oct	Rate(3)	Jan-Oct	Rate(3)	
Crime Against the Person	1835	1921.5	1510	1581.2	-17.7
Crimes Against Property	4889	5119.4	4674	4894.3	-4.4
Other Criminal Code of Canada Offences	3545	3712.1	2847	2981.2	-19.7
Total CCC Offences Excluding Traffic	10269	10753.0	9031	9456.6	-12.1
Traffic Offences	1693	1772.8	1541	1613.6	-9.0
Total CCC Offences and Traffic	11962	12525.8	10572	11070.3	-11.6

Crimes Against Person (YTD January - October)

	2011		2012		% Change 2011 - 2012(4)
	Jan-Oct	Rate(3)	Jan-Oct	Rate(3)	
Homicide	3	3.1	1	1.0	-
Attempted Murder	1	1.0	1	1.0	-
Robbery/Extortion	149	156.0	120	125.7	-19.5
Assault	1136	1189.5	1000	1047.1	-12.0
Sexual Assault	101	105.8	74	77.5	-26.7
Criminal Harassment	76	79.6	52	54.5	-31.6
Uttering Threats	365	382.2	259	271.2	-29.0
Arson - Disregard for Life	2	2.1	2	2.1	0.0

Notes:

1. The data presented is taken from the Police Records Information Management Environment (PRIME) database. Data that is coded and analyzed according to the requirements of the violation coding structure for Uniform Crime Reporting (UCR) survey as set up by Statistics Canada.
2. The crime statistics published in this report are accurate on the day that they were analyzed. Due to ongoing police investigation and internal data quality control efforts, this information is subject to change, including addition, deletion and reclassification of any and all data. Rates and percentages have been rounded.
3. Rate is calculated on a per 100,000 rate for each month and year. As provided by Capital Region District, the 2011 and 2012 population is estimated at 100,657.
4. The % change is based on the actual values and is subject to (2).
5. As of April 2012, Victoria Police now record all abandoned 911 calls (e.g. "pocket dials") when calculating total calls for service.

Crimes Against Property (YTD January - October)

		2011		2012		% Change 2011 - 2012(4)
		Jan-Oct	Rate(3)	Jan-Oct	Rate(3)	
B&E Business		179	187.4	197	206.3	10.1
B&E-Other		146	152.9	190	199.0	30.1
B&E-Residence		304	318.3	299	313.1	-1.6
Fraud		365	382.2	243	254.5	-33.4
Possession of Stolen Property/Break and Enter Tools		70	73.3	73	76.4	4.3
Theft Over \$5000		17	17.8	22	23.0	29.4
Theft Under \$5000		807	845.0	955	1000.0	18.3
Theft from Motor Vehicle		1664	1742.4	1255	1314.1	-24.6
Theft of Motor Vehicle		163	170.7	206	215.7	26.4
Take Vehicle without Consent		7	7.3	7	7.3	0.0
Theft of Bicycle		289	302.6	383	401.1	32.5
Shoplifting		861	901.6	819	857.6	-4.9
Arson		17	17.8	22	23.0	29.4

Other Criminal Code Offences (YTD January - October)

		2011		2012		% Change 2011 - 2012(4)
		Jan-Oct	Rate(3)	Jan-Oct	Rate(3)	
Bail Violations/Breach of Probation		468	490.1	475	497.4	1.5
Domestic Dispute		718	751.8	626	655.5	-12.8
Drugs		817	855.5	654	684.8	-20.0
Indecent Acts		89	93.2	34	35.6	-61.8
Mischief		1287	1347.7	979	1025.1	-23.9
Offensive Weapons		166	173.8	79	82.7	-52.4

Traffic Offences (YTD January - October)

		2011		2012		% Change 2011 - 2012(4)
		Jan-Oct	Rate(3)	Jan-Oct	Rate(3)	
Traffic - Collisions		717	750.8	632	661.8	-11.9
Traffic - Fatal		0	0.0	2	2.1	-
Traffic - Other		429	449.2	514	538.2	19.8
Dangerous Operation of Motor Vehicle		6	6.3	10	10.5	66.7
Fail to Remain		177	185.3	115	120.4	-35.0
Impaired/Refuse		364	381.2	267	279.6	-26.6

Calls for Service (YTD January - October)

					2011				2012				% Change 2011 - 2012(4)
					Vic	% of Total	Esq	% of Total	Vic	% of Total	Esq	% of Total	
Priority 1: Emergency, dispatch immediate, high probability of death or grievous bodily harm					2531	84.1	478	15.9	2362	83.8	456	16.2	-6.3
Priority 2: Urgent, dispatch immediate, not life threatening in nature					7503	88.6	964	11.4	12274	92.5	990	7.5	56.5
Priority 3: Routine: non-urgent					15108	90.5	1585	9.5	14987	89.8	1703	10.2	0.6
Priority 4: May or may not be dispatched, dependent on agency					9912	91.3	942	8.7	8983	89.7	1033	10.3	-7.2
Other Alternative					7	77.8	2	22.2	21	100.0		0.0	133.3
Total - All Priorities					35061	89.8	3971	10.2	38627	90.2	4182	9.8	10.1

**Please Note the above table was calculated according to Municipality with only Victoria and Esquimalt calls calculated. The table below was calculated according to Neighbourhood. The 'Grand Total' includes all calls attended notwithstanding jurisdiction. As a result the numbers may not correspond.

Calls for Service by Priority and Neighbourhood (January - October)

<i>Neighbourhood</i>	<i>Priority 1</i>	<i>Priority 2</i>	<i>Priority 3</i>	<i>Priority 4</i>	<i>Other</i>	<i>Total</i>	<i>% of Total City</i>	<i>% of Grand total</i>
COLVILLE	17	37	81	42		177	4.2	0.4
DEVONSHIRE	24	49	102	71		246	5.9	0.6
DN1		6	4	5		15	0.4	0.0
ESQUIMALT VILLAGE	124	316	537	304		1281	30.7	3.0
PANHANDLE	18	84	105	68		275	6.6	0.6
PARKLANDS	21	22	67	35		145	3.5	0.3
ROCKHEIGHTS	66	93	165	81		405	9.7	0.9
SAXE POINT	23	50	126	85		284	6.8	0.7
SELKIRK	45	118	160	120		443	10.6	1.0
WEST BAY	118	200	358	221		897	21.5	2.1
TANK FARM	0	0	0	0		0	0.0	0.0
ESQUIMALT TOTAL	456	975	1705	1032		4168	100.0	9.7
BURNSIDE GORGE	472	1400	2432	1229	3	5536	14.3	12.8
DOWNTOWN	379	2003	3499	2141	3	8025	20.7	18.6
FAIRFIELD	158	464	995	611	2	2230	5.8	5.2
FERNWOOD	193	450	876	597		2116	5.5	4.9
GONZALES	26	70	174	138	1	409	1.1	0.9
HARRIS GREEN	148	680	1257	607		2692	6.9	6.2
HILLSIDE QUADRA	226	515	947	476		2164	5.6	5.0
JAMES BAY	196	614	907	576	1	2294	5.9	5.3
NORTH JUBILEE	42	113	187	122		464	1.2	1.1
NORTH PARK	187	4782	1754	1362	9	8094	20.9	18.7
OAKLANDS	133	313	616	340		1402	3.6	3.2
ROCKLAND	21	126	168	136	1	452	1.2	1.0
SOUTH JUBILEE	47	334	373	183		937	2.4	2.2
VIC WEST	134	401	793	462	1	1791	4.6	4.1
UNKNOWN	1	14	111	45		171	0.4	0.4
VICTORIA TOTAL	2363	12279	15089	9025	21	38777	100.0	89.8
GRAND TOTAL	2843	13352	16870	10097	9	43183		100.0

