



## ARCHIVED - Archiving Content

### Archived Content

Information identified as archived is provided for reference, research or recordkeeping purposes. It is not subject to the Government of Canada Web Standards and has not been altered or updated since it was archived. Please contact us to request a format other than those available.

## ARCHIVÉE - Contenu archivé

### Contenu archivé

L'information dont il est indiqué qu'elle est archivée est fournie à des fins de référence, de recherche ou de tenue de documents. Elle n'est pas assujettie aux normes Web du gouvernement du Canada et elle n'a pas été modifiée ou mise à jour depuis son archivage. Pour obtenir cette information dans un autre format, veuillez communiquer avec nous.

This document is archival in nature and is intended for those who wish to consult archival documents made available from the collection of Public Safety Canada.

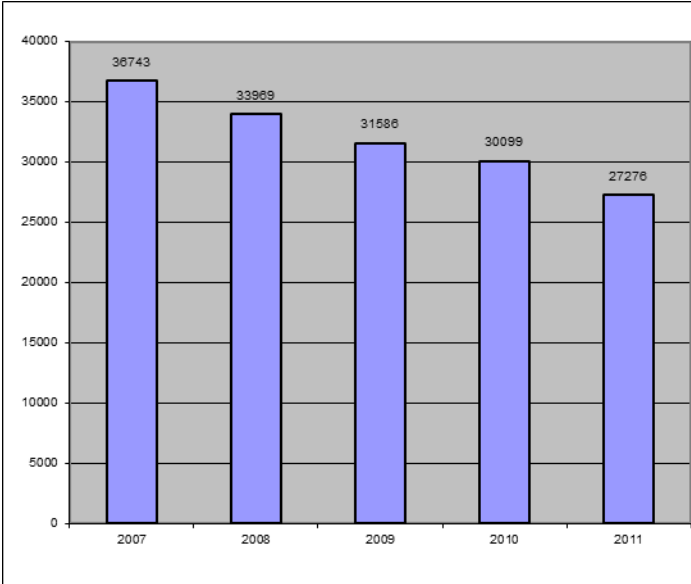
Some of these documents are available in only one official language. Translation, to be provided by Public Safety Canada, is available upon request.

Le présent document a une valeur archivistique et fait partie des documents d'archives rendus disponibles par Sécurité publique Canada à ceux qui souhaitent consulter ces documents issus de sa collection.

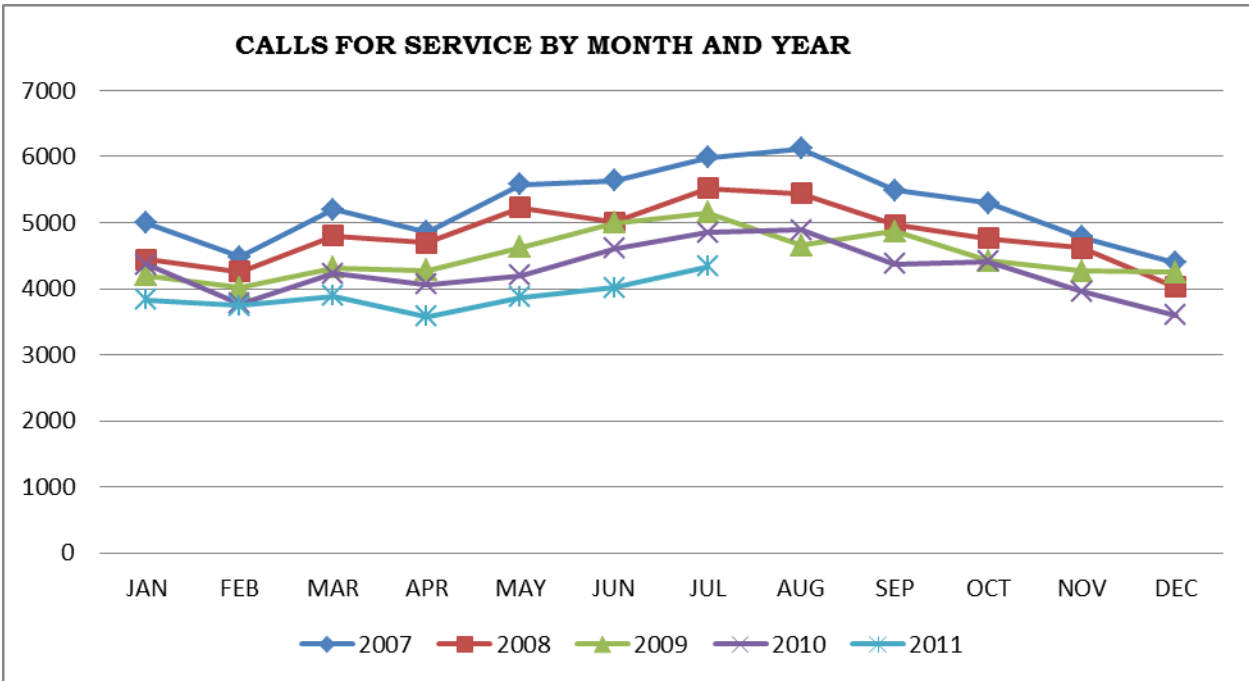
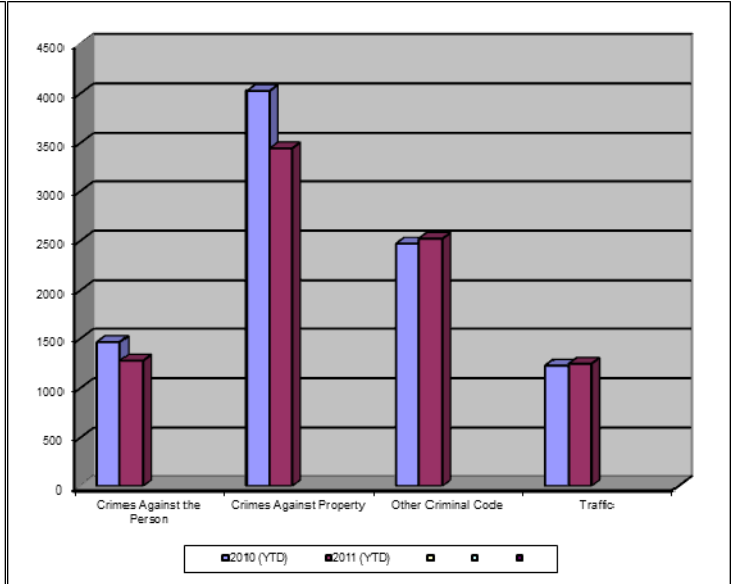
Certains de ces documents ne sont disponibles que dans une langue officielle. Sécurité publique Canada fournira une traduction sur demande.

### Crime Trends for Victoria and Esquimalt : January to July 31, 2010 – 2011 (1,2)

Key Crime Trends



Total Calls for Service (Annual)



### Key Crime Trends (YTD- January – July 31)

	2010		2011		% Change 2010 - 2011(4)
	Jan-Jul	Rate(3)	Jan-Jul	Rate(3)	
Crime Against the Person	1465	1534.0	1286	1346.6	-12.2
Crimes Against Property	4028	4217.8	3446	3608.4	-14.4
Other Criminal Code of Canada Offenses	2472	2588.5	2523	2641.9	2.1
Total CCC Offences Excluding Traffic	7965	8340.4	7255	7596.9	-8.9
Traffic Offences	1235	1293.2	1254	1313.1	1.5
Total CCC Offences and Traffic	9200	9633.6	8509	8910.0	-7.5

### Crimes Against Person (YTD January – July 31)

	2010		2011		% Change 2010 - 2011(4)
	Jan-Jul	Rate(3)	Jan-Jul	Rate(3)	
Homicide	1	1.0	0	0.0	-100.0
Attempted Murder	1	1.0	1	1.0	-
Robbery/Extortion	143	149.7	110	115.2	-23.1
Assault	903	945.6	763	799.0	-15.5
Sexual Assault	78	81.7	83	86.9	6.4
Criminal Harassment	50	52.4	53	55.5	6.0
Uttering Threats	290	303.7	270	282.7	-6.9
Arson - Disregard for Life	0	0.0	2	2.1	-

#### Notes:

1. The data presented is taken from the Police Records Information Management Environment (PRIME) database. Data that is coded and analyzed according to the requirements of the violation coding structure for Uniform Crime Reporting (UCR) survey as set up by Statistics Canada.
2. The crime statistics published in this report are accurate on the day that they were analyzed. Due to ongoing police investigation and internal data quality control efforts, this information is subject to change, including addition, deletion and reclassification of any and all data. Rates and percentages have been rounded.
3. Rate is calculated on a per 100,000 rate for each month and year. As provided by Capital Region District, the 2010 and 2011 population is estimated at 100,657.
4. The % change is based on the actual values and is subject to (2).

Crimes Against Property (YTD January – July 31)

			2010		2011		% Change 2010 - 2011(4)
			Jan-Jul	Rate(3)	Jan-Jul	Rate(3)	
B&E Business			112	117.3	115	120.4	2.7
B&E-Other			104	108.9	85	89.0	-18.3
B&E-Residence			331	346.6	191	200.0	-42.3
Fraud			386	404.2	243	254.5	-37.0
Possession of Stolen Property/Break and Enter Tools			84	88.0	52	54.5	-38.1
Theft Over \$5000			16	16.8	5	5.2	-68.8
Theft Under \$5000			658	689.0	550	575.9	-16.4
Theft from Motor Vehicle			1179	1234.6	1299	1360.2	10.2
Theft of Motor Vehicle			216	226.2	118	123.6	-45.4
Take Vehicle without Consent			10	10.5	5	5.2	-50.0
Theft of Bicycle			183	191.6	176	184.3	-3.8
Shoplifting			728	762.3	590	617.8	-19.0
Arson			20	20.9	16	16.8	-20.0

Other Criminal Code Offences (YTD January – July 31)

			2010		2011		% Change 2010 - 2011(4)
			Jan-Jul	Rate(3)	Jan-Jul	Rate(3)	
Bail Violations/Breach of Probation			436	456.5	327	342.4	-25.0
Domestic Dispute			503	526.7	504	527.8	0.2
Drugs			484	506.8	585	612.6	20.9
Indecent Acts			38	39.8	72	75.4	89.5
Mischief			900	942.4	916	959.2	1.8
Offensive Weapons			111	116.2	119	124.6	7.2

Traffic Offences (YTD January – July 31)

			2010		2011		% Change 2010 - 2011(4)
			Jan-Jul	Rate(3)	Jan-Jul	Rate(3)	
Traffic - Collisions			506	529.8	500	523.6	-1.2
Traffic - Fatal			1	1.0	0	0.0	-
Traffic - Other			198	207.3	235	246.1	18.7
Dangerous Operation of Motor Vehicle			47	49.2	15	15.7	-68.1
Fail to Remain			159	166.5	113	118.3	-28.9
Impaired/Refuse			277	290.1	272	284.8	-1.8

Calls for Service (YTD January – July 31, 2011)

					2010				2011				% Change 2010 - 2011(4)
					Vic	% of Total	Esq	% of Total	Vic	% of Total	Esq	% of Total	
<b>Priority 1:</b> Emergency, dispatch immediate, high probability of death or grievous bodily harm					1745	81.8	388	18.2	1753.0	83.8	338.0	16.2	-1.8
<b>Priority 2:</b> Urgent, dispatch immediate, not life threatening in nature					5886	88.5	765	11.5	5102.0	88.2	683.0	11.8	-12.9
<b>Priority 3:</b> Routine: non-urgent					11292	89.6	1310	10.4	10363.0	90.5	1085.0	9.5	-9.3
<b>Priority 4:</b> May or may not be dispatched, dependant on agency					7803	92.0	679	8.0	7068.0	90.9	710.0	9.1	-8.6
Other Alternative					8	100.0		0.0	3.0	75.0	1.0	25.0	-50.0
<b>Total - All Priorities</b>					<b>26734</b>	<b>89.5</b>	<b>3142</b>	<b>10.5</b>	<b>24289.0</b>	<b>89.6</b>	<b>2817.0</b>	<b>10.4</b>	<b>-9.4</b>

Calls for Service by Priority and Neighbourhood: January – July 31, 2011

<i>Neighbourhood</i>	<i>Priority 1</i>	<i>Priority 2</i>	<i>Priority 3</i>	<i>Priority 4</i>	<i>Other</i>	<i>Total</i>	<i>% of Total City</i>	<i>% of Grand total</i>
COLVILLE	8	19	29	31		87	3.1	0.3
DEVONSHIRE	18	42	68	81		209	7.4	0.8
DN1		2	6	3		11	0.4	0.0
ESQUIMALT VILLAGE	90	217	302	163		772	27.4	2.9
PANHANDLE	14	36	77	43		170	6.0	0.6
PARKLANDS	15	13	32	23		83	2.9	0.3
ROCKHEIGHTS	36	67	120	92		315	11.2	1.2
SAXE POINT	24	41	108	71		244	8.7	0.9
SELKIRK	35	77	98	56	1	267	9.5	1.0
WEST BAY	98	168	245	147		658	23.4	2.4
TANK FARM	0	0	0	0	0	0	0.0	0.0
<b>ESQUIMALT TOTAL</b>	<b>338</b>	<b>682</b>	<b>1085</b>	<b>710</b>	<b>1</b>	<b>2816</b>	<b>100.0</b>	<b>10.4</b>
BURNSIDE GORGE	360	1073	1861	994		4288	17.7	15.9
DOWNTOWN	265	1093	2104	1657		5119	21.1	18.9
FAIRFIELD	121	328	692	465		1606	6.6	5.9
FERNWOOD	152	307	633	439		1531	6.3	5.7
GONZALES	23	51	227	94		395	1.6	1.5
HARRIS GREEN	121	398	778	405		1702	7.0	6.3
HILLSIDE QUADRA	146	319	618	433	1	1517	6.2	5.6
JAMES BAY	141	361	596	432		1530	6.3	5.7
NORTH JUBILEE	47	66	99	75		287	1.2	1.1
NORTH PARK	139	443	1359	1001		2942	12.1	10.9
OAKLANDS	82	201	487	396	1	1167	4.8	4.3
ROCKLAND	24	54	98	103	1	280	1.2	1.0
SOUTH JUBILEE	37	167	269	175		648	2.7	2.4
VIC WEST	95	238	509	375		1217	5.0	4.5
UNKNOWN		3	33	24		60	0.2	0.2
<b>VICTORIA TOTAL</b>	<b>1753</b>	<b>5102</b>	<b>10363</b>	<b>7068</b>	<b>3</b>	<b>24289</b>	<b>100.0</b>	<b>89.8</b>
<b>GRAND TOTAL</b>	<b>2091</b>	<b>5781</b>	<b>11415</b>	<b>7745</b>	<b>4</b>	<b>27045</b>		<b>100.0</b>