



ARCHIVED - Archiving Content

Archived Content

Information identified as archived is provided for reference, research or recordkeeping purposes. It is not subject to the Government of Canada Web Standards and has not been altered or updated since it was archived. Please contact us to request a format other than those available.

ARCHIVÉE - Contenu archivé

Contenu archivé

L'information dont il est indiqué qu'elle est archivée est fournie à des fins de référence, de recherche ou de tenue de documents. Elle n'est pas assujettie aux normes Web du gouvernement du Canada et elle n'a pas été modifiée ou mise à jour depuis son archivage. Pour obtenir cette information dans un autre format, veuillez communiquer avec nous.

This document is archival in nature and is intended for those who wish to consult archival documents made available from the collection of Public Safety Canada.

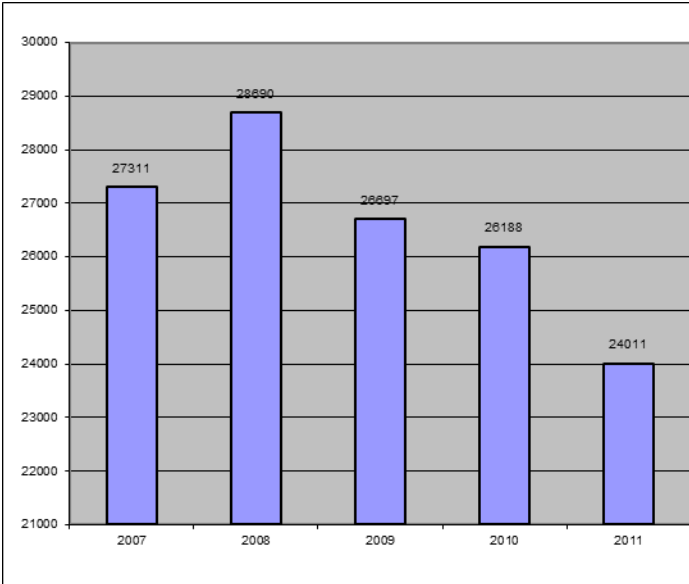
Some of these documents are available in only one official language. Translation, to be provided by Public Safety Canada, is available upon request.

Le présent document a une valeur archivistique et fait partie des documents d'archives rendus disponibles par Sécurité publique Canada à ceux qui souhaitent consulter ces documents issus de sa collection.

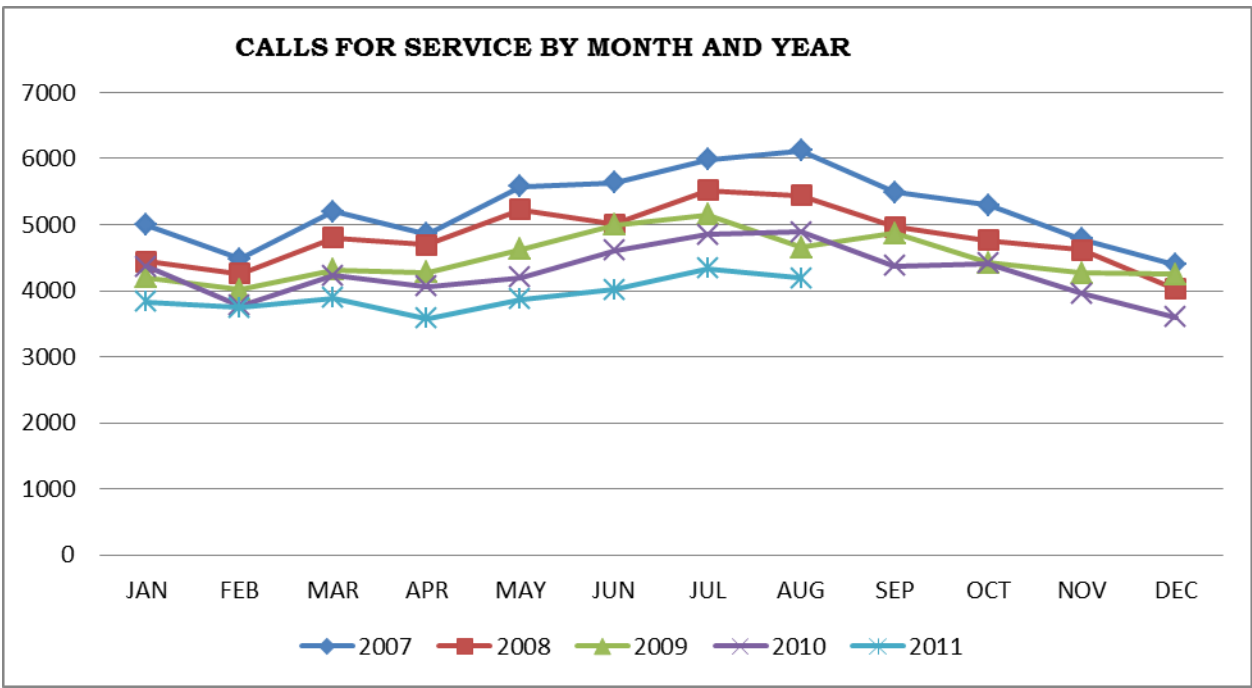
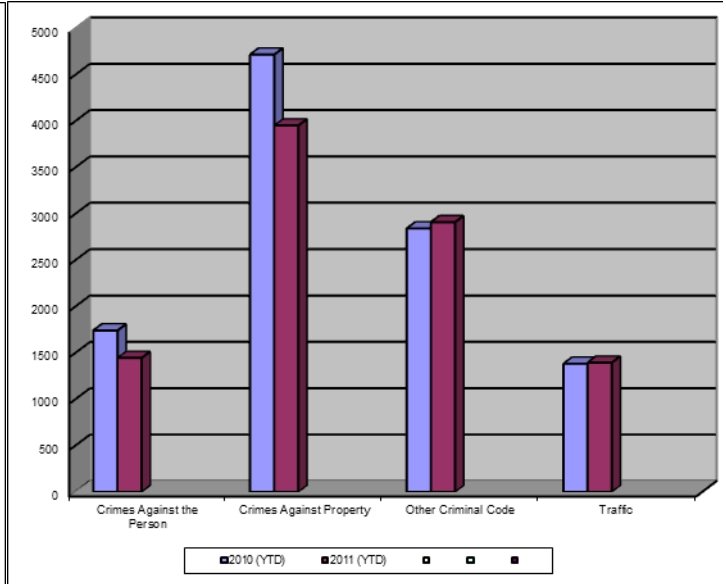
Certains de ces documents ne sont disponibles que dans une langue officielle. Sécurité publique Canada fournira une traduction sur demande.

Crime Trends for Victoria and Esquimalt: January to August 31, 2010 – 2011 (1,2)

Key Crime Trends



Total Calls for Service (Annual)



Key Crime Trends (YTD- January – August 31)

	2010		2011		% Change 2010 - 2011(4)
	Jan-Aug	Rate(3)	Jan-Aug	Rate(3)	
Crime Against the Person	1741	1823.1	1445	1513.1	-17.0
Crimes Against Property	4716	4938.3	3951	4137.2	-16.2
Other Criminal Code of Canada Offenses	2841	2974.9	2909	3046.1	2.4
Total CCC Offences Excluding Traffic	9298	9736.2	8305	8696.4	-10.7
Traffic Offences	1382	1447.1	1394	1459.7	0.9
Total CCC Offences and Traffic	10680	11183.4	9699	10156.1	-9.2

Crimes Against Person (YTD January – August 31)

	2010		2011		% Change 2010 - 2011(4)
	Jan-Aug	Rate(3)	Jan-Aug	Rate(3)	
Homicide	1	1.0	0	0.0	-100.0
Attempted Murder	1	1.0	1	1.0	-
Robbery/Extortion	160	167.5	120	125.7	-25.0
Assault	1080	1130.9	865	905.8	-19.9
Sexual Assault	90	94.2	90	94.2	0.0
Criminal Harassment	54	56.5	63	66.0	16.7
Uttering Threats	330	345.6	287	300.5	-13.0
Arson - Disregard for Life	0	0.0	2	2.1	-

Notes:

1. The data presented is taken from the Police Records Information Management Environment (PRIME) database. Data that is coded and analyzed according to the requirements of the violation coding structure for Uniform Crime Reporting (UCR) survey as set up by Statistics Canada.
2. The crime statistics published in this report are accurate on the day that they were analyzed. Due to ongoing police investigation and internal data quality control efforts, this information is subject to change, including addition, deletion and reclassification of any and all data. Rates and percentages have been rounded.
3. Rate is calculated on a per 100,000 rate for each month and year. As provided by Capital Region District, the 2010 and 2011 population is estimated at 100,657.
4. The % change is based on the actual values and is subject to (2).

Crimes Against Property (YTD January – August 31)

			2010		2011		% Change 2010 - 2011(4)
			Jan-Aug	Rate(3)	Jan-Aug	Rate(3)	
B&E Business			130	136.1	139	145.6	6.9
B&E-Other			117	122.5	104	108.9	-11.1
B&E-Residence			371	388.5	230	240.8	-38.0
Fraud			461	482.7	288	301.6	-37.5
Possession of Stolen Property/Break and Enter Tools			98	102.6	56	58.6	-42.9
Theft Over \$5000			19	19.9	9	9.4	-52.6
Theft Under \$5000			766	802.1	641	671.2	-16.3
Theft from Motor Vehicle			1425	1492.2	1436	1503.7	0.8
Theft of Motor Vehicle			238	249.2	141	147.6	-40.8
Take Vehicle without Consent			15	15.7	7	7.3	-53.3
Theft of Bicycle			231	241.9	211	220.9	-8.7
Shoplifting			824	862.8	673	704.7	-18.3
Arson			21	22.0	16	16.8	-23.8

Other Criminal Code Offences (YTD January – August 31)

			2010		2011		% Change 2010 - 2011(4)
			Jan-Aug	Rate(3)	Jan-Aug	Rate(3)	
Bail Violations/Breach of Probation			486	508.9	379	396.9	-22.0
Domestic Dispute			576	603.1	596	624.1	3.5
Drugs			575	602.1	662	693.2	15.1
Indecent Acts			46	48.2	82	85.9	78.3
Mischief			1030	1078.5	1054	1103.7	2.3
Offensive Weapons			128	134.0	136	142.4	6.3

Traffic Offences (YTD January – August 31)

			2010		2011		% Change 2010 - 2011(4)
			Jan-Aug	Rate(3)	Jan-Aug	Rate(3)	
Traffic - Collisions			593	620.9	578	605.2	-2.5
Traffic - Fatal			1	1.0	0	0.0	-
Traffic - Other			275	288.0	380	397.9	38.2
Dangerous Operation of Motor Vehicle			10	10.5	5	5.2	-50.0
Fail to Remain			193	202.1	126	131.9	-34.7
Impaired/Refuse			310	324.6	305	319.4	-1.6

Calls for Service (YTD January – August, 2011)

					2010				2011				% Change 2010 - 2011(4)
					Vic	% of Total	Esq	% of Total	Vic	% of Total	Esq	% of Total	
Priority 1: Emergency, dispatch immediate, high probability of death or grievous bodily harm					2016	82.2	437	17.8	2012	85.6	338.0	14.4	-4.2
Priority 2: Urgent, dispatch immediate, not life threatening in nature					6780	88.6	871	11.4	5928	89.7	683.0	10.3	-13.6
Priority 3: Routine: non-urgent					13056	89.4	1552	10.6	11980	91.7	1085.0	8.3	-10.6
Priority 4: May or may not be dispatched, dependant on agency					9172	92.2	776	7.8	8104	91.9	710.0	8.1	-11.4
Other Alternative					9	100.0		0.0	3	75.0	1.0	25.0	-55.6
Total - All Priorities					31033	89.5	3636	10.5	28027	90.9	2817.0	9.1	-11.0

Calls for Service by Priority and Neighbourhood: January – August 31, 2011

Neighbourhood	Priority 1	Priority 2	Priority 3	Priority 4	Other	Total	% of Total City	% of Grand total
COLVILLE	9	23	39	39		110	3.4	0.4
DEVONSHIRE	21	47	76	89		233	7.2	0.7
DN1		2	7	3		12	0.4	0.0
ESQUIMALT VILLAGE	100	249	351	192		892	27.6	2.9
PANHANDLE	18	45	85	48		196	6.1	0.6
PARKLANDS	17	14	37	24		92	2.8	0.3
ROCKHEIGHTS	47	75	135	99		356	11.0	1.1
SAXE POINT	30	48	117	77		272	8.4	0.9
SELKIRK	42	89	119	65	1	316	9.8	1.0
WEST BAY	115	186	290	167		758	23.4	2.4
TANK FARM	0	0	0	0	0	0	0.0	0.0
ESQUIMALT TOTAL	399	778	1256	803	1	3237	100.0	10.4
BURNSIDE GORGE	422	1231	2129	1131		4913	17.5	15.7
DOWNTOWN	295	1259	2435	1909		5898	21.0	18.9
FAIRFIELD	138	389	829	555		1911	6.8	6.1
FERNWOOD	178	363	752	508		1801	6.4	5.8
GONZALES	27	55	245	103		430	1.5	1.4
HARRIS GREEN	134	454	902	466		1956	7.0	6.3
HILLSIDE QUADRA	172	364	716	487	1	1740	6.2	5.6
JAMES BAY	162	438	703	512		1815	6.5	5.8
NORTH JUBILEE	51	81	116	86		334	1.2	1.1
NORTH PARK	153	501	1532	1120		3306	11.8	10.6
OAKLANDS	106	230	541	434	1	1312	4.7	4.2
ROCKLAND	26	59	111	116	1	313	1.1	1.0
SOUTH JUBILEE	40	207	310	210		767	2.7	2.5
VIC WEST	108	294	613	427		1442	5.1	4.6
UNKNOWN		3	46	40		89	0.3	0.3
VICTORIA TOTAL	2012	5928	11980	8104	3	28027	100.0	89.6
GRAND TOTAL	2411	6707	13236	8907	8	31265		100.0