



ARCHIVED - Archiving Content

Archived Content

Information identified as archived is provided for reference, research or recordkeeping purposes. It is not subject to the Government of Canada Web Standards and has not been altered or updated since it was archived. Please contact us to request a format other than those available.

ARCHIVÉE - Contenu archivé

Contenu archivé

L'information dont il est indiqué qu'elle est archivée est fournie à des fins de référence, de recherche ou de tenue de documents. Elle n'est pas assujettie aux normes Web du gouvernement du Canada et elle n'a pas été modifiée ou mise à jour depuis son archivage. Pour obtenir cette information dans un autre format, veuillez communiquer avec nous.

This document is archival in nature and is intended for those who wish to consult archival documents made available from the collection of Public Safety Canada.

Some of these documents are available in only one official language. Translation, to be provided by Public Safety Canada, is available upon request.

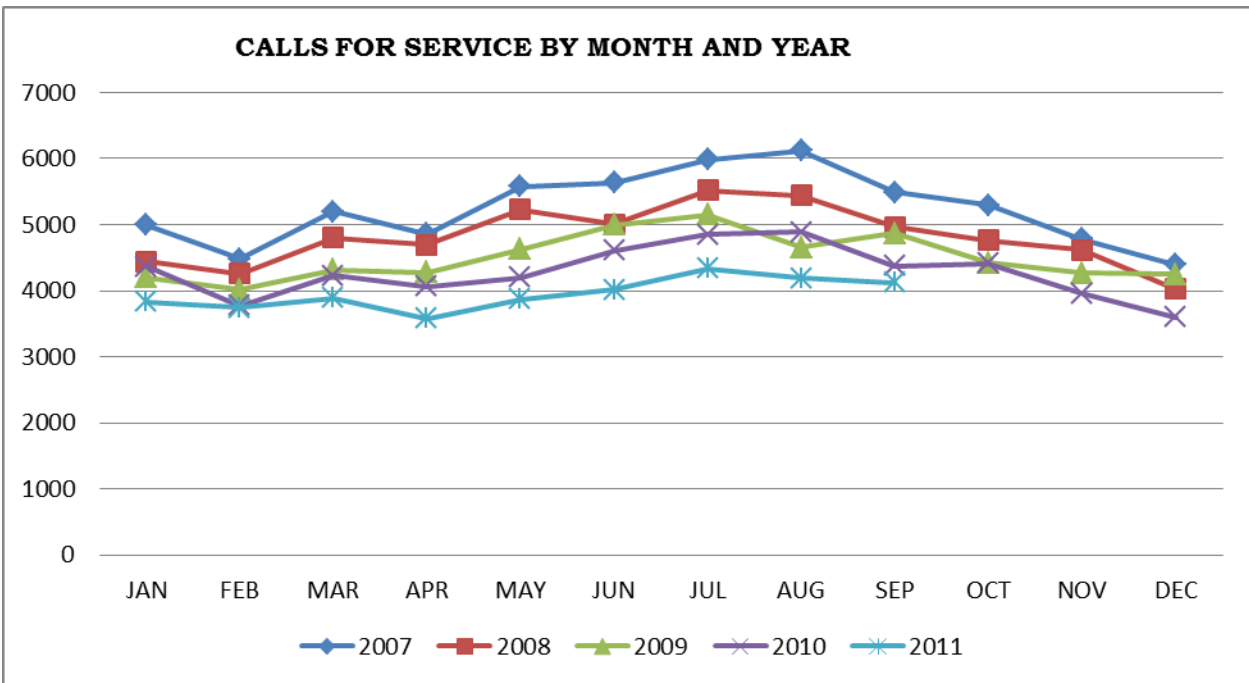
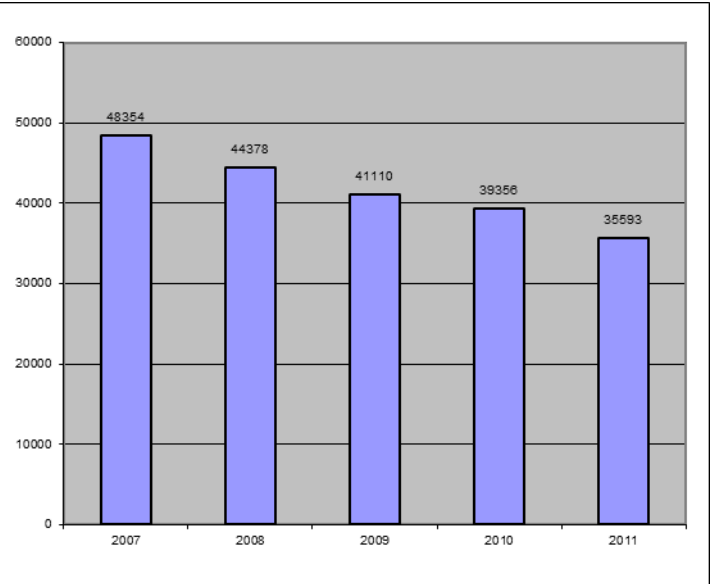
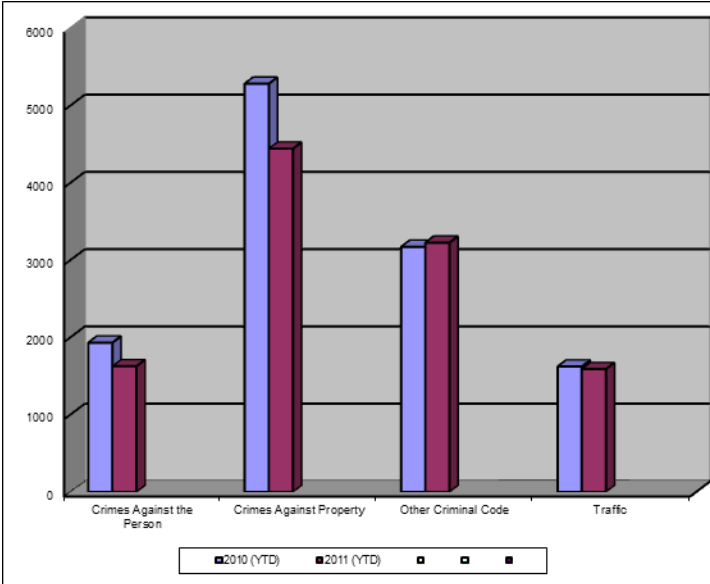
Le présent document a une valeur archivistique et fait partie des documents d'archives rendus disponibles par Sécurité publique Canada à ceux qui souhaitent consulter ces documents issus de sa collection.

Certains de ces documents ne sont disponibles que dans une langue officielle. Sécurité publique Canada fournira une traduction sur demande.

Crime Trends for Victoria and Esquimalt : January to September 30, 2010 – 2011 (1,2)

Key Crime Trends

Total Calls for Service (Annual)



Key Crime Trends (YTD- January – September 30)

	2010		2011		% Change 2010 - 2011(4)
	Jan-Sep	Rate(3)	Jan-Sep	Rate(3)	
Crime Against the Person	1931	2022.0	1626	1702.6	-15.8
Crimes Against Property	5283	5532.0	4442	4651.4	-15.9
Other Criminal Code of Canada Offenses	3172	3321.5	3226	3378.0	1.7
Total CCC Offences Excluding Traffic	10386	10875.5	9294	9732.0	-10.5
Traffic Offences	1623	1699.5	1590	1664.9	-2.0
Total CCC Offences and Traffic	12009	12575.0	10884	11397.0	-9.4

Crimes Against Person (YTD January – September 30)

	2010		2011		% Change 2010 - 2011(4)
	Jan-Sep	Rate(3)	Jan-Sep	Rate(3)	
Homicide	1	1.0	0	0.0	-100.0
Attempted Murder	1	1.0	2	2.1	-
Robbery/Extortion	175	183.2	140	146.6	-20.0
Assault	1225	1282.7	995	1041.9	-18.8
Sexual Assault	102	106.8	94	98.4	-7.8
Criminal Harassment	60	62.8	73	76.4	21.7
Uttering Threats	368	385.3	320	335.1	-13.0
Arson - Disregard for Life	0	0.0	2	2.1	-

Notes:

1. The data presented is taken from the Police Records Information Management Environment (PRIME) database. Data that is coded and analyzed according to the requirements of the violation coding structure for Uniform Crime Reporting (UCR) survey as set up by Statistics Canada.
2. The crime statistics published in this report are accurate on the day that they were analyzed. Due to ongoing police investigation and internal data quality control efforts, this information is subject to change, including addition, deletion and reclassification of any and all data. Rates and percentages have been rounded.
3. Rate is calculated on a per 100,000 rate for each month and year. As provided by Capital Region District, the 2010 and 2011 population is estimated at 100,657.
4. The % change is based on the actual values and is subject to (2).

Crimes Against Property (YTD January – September 30)

			2010		2011		% Change 2010 - 2011(4)
			Jan-Sep	Rate(3)	Jan-Sep	Rate(3)	
B&E Business			138	144.5	161	168.6	16.7
B&E-Other			135	141.4	119	124.6	-11.9
B&E-Residence			431	451.3	268	280.6	-37.8
Fraud			507	530.9	313	327.8	-38.3
Possession of Stolen Property/Break and Enter Tools			117	122.5	63	66.0	-46.2
Theft Over \$5000			20	20.9	11	11.5	-45.0
Theft Under \$5000			874	915.2	752	787.4	-14.0
Theft from Motor Vehicle			1578	1652.4	1556	1629.3	-1.4
Theft of Motor Vehicle			253	264.9	156	163.4	-38.3
Take Vehicle without Consent			18	18.8	8	8.4	-55.6
Theft of Bicycle			277	290.1	256	268.1	-7.6
Shoplifting			914	957.1	759	794.8	-17.0
Arson			21	22.0	18	18.8	-14.3

Other Criminal Code Offences (YTD January – September 30)

			2010		2011		% Change 2010 - 2011(4)
			Jan-Sep	Rate(3)	Jan-Sep	Rate(3)	
Bail Violations/Breach of Probation			536	561.3	415	434.6	-22.6
Domestic Dispute			655	685.9	668	699.5	2.0
Drugs			654	684.8	729	763.4	11.5
Indecent Acts			54	56.5	87	91.1	61.1
Mischief			1127	1180.1	1178	1233.5	4.5
Offensive Weapons			146	152.9	149	156.0	2.1

Traffic Offences (YTD January – September 30)

			2010		2011		% Change 2010 - 2011(4)
			Jan-Sep	Rate(3)	Jan-Sep	Rate(3)	
Traffic - Collisions			675	706.8	655	685.9	-3.0
Traffic - Fatal			1	1.0	0	0.0	-
Traffic - Other			315	329.8	443	463.9	40.6
Dangerous Operation of Motor Vehicle			64	67.0	15	15.7	-76.6
Fail to Remain			222	232.5	146	152.9	-34.2
Impaired/Refuse			340	356.0	331	346.6	-2.6

Calls for Service (YTD January – September 30)

					2010				2011				% Change 2010 - 2011(4)
					Vic	% of Total	Esq	% of Total	Vic	% of Total	Esq	% of Total	
Priority 1: Emergency, dispatch immediate, high probability of death or grievous bodily harm					2271	82.0	498	18.0	2262	83.7	442.0	16.3	-2.4
Priority 2: Urgent, dispatch immediate, not life threatening in nature					7616	88.8	963	11.2	6755	88.4	889.0	11.6	-11.0
Priority 3: Routine: non-urgent					14636	89.5	1714	10.5	13574	90.5	1428.0	9.5	-8.9
Priority 4: May or may not be dispatched, dependant on agency					10270	92.2	871	7.8	9089	91.1	883.0	8.9	-11.2
Other Alternative					10	100.0	0	0.0	4	66.7	2.0	33.3	-40.0
Total - All Priorities					34803	89.6	4046	10.4	31684	89.7	3644.0	10.3	-9.6

**Please Note the above table was calculated according to Municipality – the table below was calculated according to Neighbourhood. As a result the numbers may not correspond.

Calls for Service by Priority and Neighbourhood: January – September 30

Neighbourhood	Priority 1	Priority 2	Priority 3	Priority 4	Other	Total	% of Total City	% of Grand total
COLVILLE	9	32	43	43		127	3.5	0.4
DEVONSHIRE	24	61	88	99		272	7.5	0.8
DN1		2	7	3		12	0.3	0.0
ESQUIMALT VILLAGE	111	274	409	216		1010	27.7	2.9
PANHANDLE	20	49	94	54		217	6.0	0.6
PARKLANDS	17	19	45	25		106	2.9	0.3
ROCKHEIGHTS	53	84	154	104	1	396	10.9	1.1
SAXE POINT	34	54	120	83		291	8.0	0.8
SELKIRK	49	107	146	74	1	377	10.3	1.1
WEST BAY	125	206	325	183		839	23.0	2.4
TANK FARM	0	0	0	0	0	0	0.0	0.0
ESQUIMALT TOTAL	442	888	1431	884	2	3647	100.0	10.3
BURNSIDE GORGE	470	1374	2420	1268		5532	17.4	15.6
DOWNTOWN	333	1449	2765	2159		6706	21.1	19.0
FAIRFIELD	150	450	965	629		2194	6.9	6.2
FERNWOOD	201	413	855	573		2042	6.4	5.8
GONZALES	27	58	266	118	1	470	1.5	1.3
HARRIS GREEN	153	530	1059	523		2265	7.1	6.4
HILLSIDE QUADRA	195	422	817	526	1	1961	6.2	5.5
JAMES BAY	181	503	805	602		2091	6.6	5.9
NORTH JUBILEE	59	97	133	91		380	1.2	1.1
NORTH PARK	175	569	1703	1290		3737	11.8	10.6
OAKLANDS	124	265	624	482	1	1496	4.7	4.2
ROCKLAND	26	65	127	126	1	345	1.1	1.0
SOUTH JUBILEE	44	236	344	233		857	2.7	2.4
VIC WEST	123	325	687	463		1598	5.0	4.5
UNKNOWN		3	33	25		61	0.2	0.2
VICTORIA TOTAL	2261	6759	13603	9108	4	31735	100.0	89.7
GRAND TOTAL	2703	7647	15034	9992	6	35382		100.0