



ARCHIVED - Archiving Content

Archived Content

Information identified as archived is provided for reference, research or recordkeeping purposes. It is not subject to the Government of Canada Web Standards and has not been altered or updated since it was archived. Please contact us to request a format other than those available.

ARCHIVÉE - Contenu archivé

Contenu archivé

L'information dont il est indiqué qu'elle est archivée est fournie à des fins de référence, de recherche ou de tenue de documents. Elle n'est pas assujettie aux normes Web du gouvernement du Canada et elle n'a pas été modifiée ou mise à jour depuis son archivage. Pour obtenir cette information dans un autre format, veuillez communiquer avec nous.

This document is archival in nature and is intended for those who wish to consult archival documents made available from the collection of Public Safety Canada.

Some of these documents are available in only one official language. Translation, to be provided by Public Safety Canada, is available upon request.

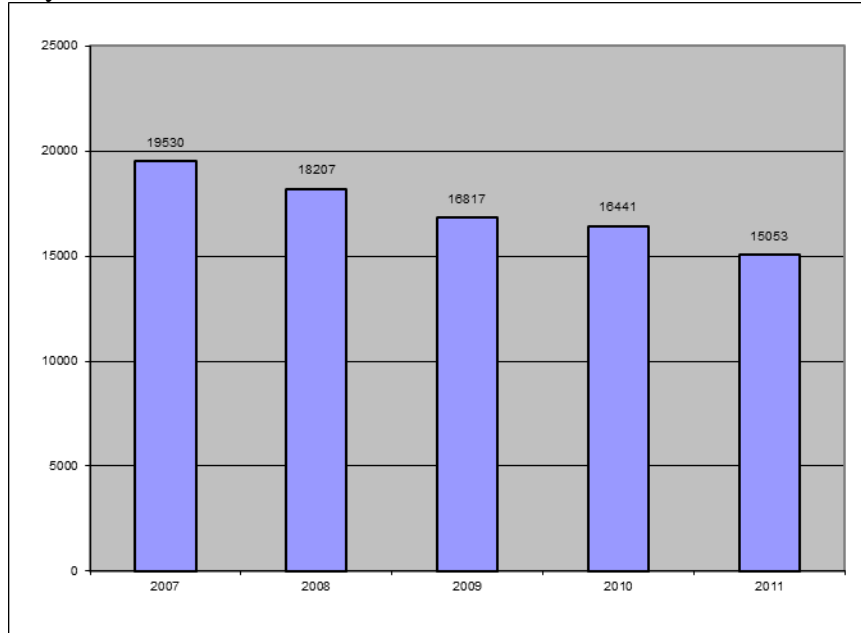
Le présent document a une valeur archivistique et fait partie des documents d'archives rendus disponibles par Sécurité publique Canada à ceux qui souhaitent consulter ces documents issus de sa collection.

Certains de ces documents ne sont disponibles que dans une langue officielle. Sécurité publique Canada fournira une traduction sur demande.

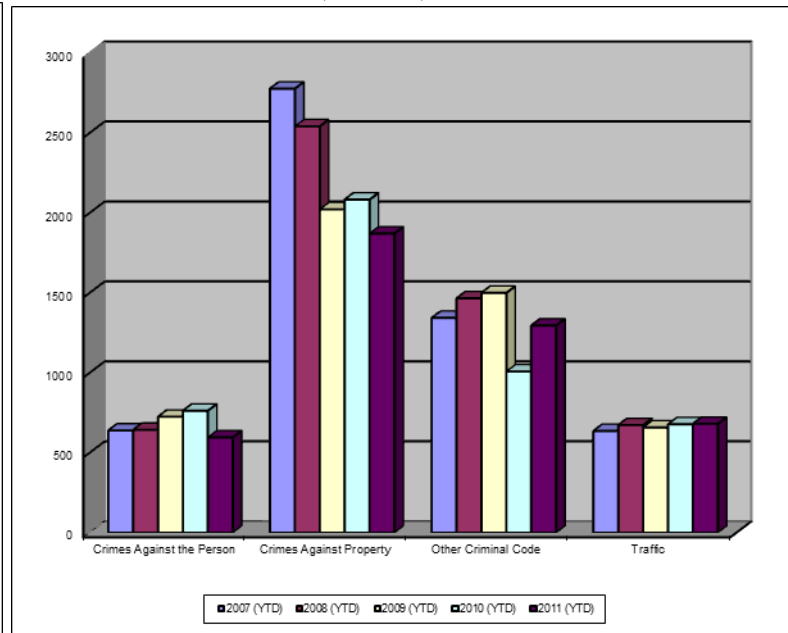


Crime Trends for Victoria and Esquimalt 2007 – 2011 ^(1,2) January - April

Key Crime Trends



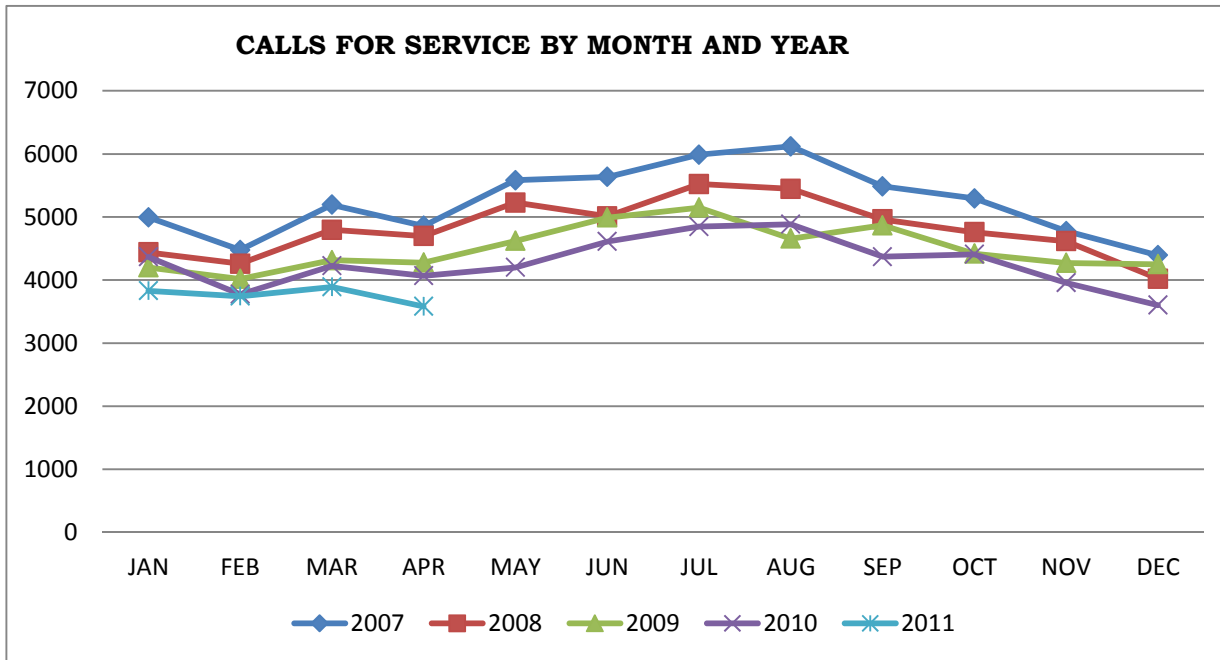
Total Calls for Service (Annual)



Notes

1. The data presented are taken from the Police Records Information Management Environment (PRIME) database. Data are coded and analyzed according to the requirements of the violation coding structure for Uniform Crime Reporting (UCR) survey as set up by Statistics Canada.
2. The crime statistics published in this report are accurate on the day that they were analyzed. Due to ongoing police investigation and internal data quality control efforts, this information is subject to change, including addition, deletion and reclassification of any and all data. Rates and percentages have been rounded.
3. As provided by the City of Victoria, the 2006 and 2007 population was 94,897; for 2008 – 2011 population is 95,499..
4. The % change is based on the actual values and are subject to (2).

CALLS FOR SERVICE BY MONTH AND YEAR



Key Crime Trends (January – April)

	2007		2008		2009		2010		2011		% Change 2010 - 2011(4)
	Jan-Apr	Rate(3)	Jan-Apr	Rate(3)	Jan-Apr	Rate(3)	Jan-Apr	Rate(3)	Jan-Apr	Rate(3)	
Crimes Against the Person	638	672.3	642	676.5	724	758.1	762	797.9	595	623.0	-21.9
Crimes Against Property	2776	2925.3	2540	2676.6	2021	2116.3	2082	2180.1	1870	1958.1	-10.2
Other Criminal Code of Canada Offences	1342	1414.2	1465	1543.8	1499	1569.6	1007	1054.5	1295	1356.0	28.6
Total CCC Offences Excluding Traffic	4756	5011.7	4647	4896.9	4244	4444.0	3851	4032.5	3760	3937.2	-2.4
Traffic Offences	635	669.1	672	708.1	657	688.0	677	708.9	680	712.0	0.4
Total CCC Offences and Traffic	5391	5680.9	5319	5605.0	4901	5132.0	4528	4741.4	4440	4649.3	-1.9

Crime Against Persons (January – April)

	2007		2008		2009		2010		2011		% Change 2010 - 2011(4)
	Jan-Apr	Rate(3)	Jan-Apr	Rate(3)	Jan-Apr	Rate(3)	Jan-Apr	Rate(3)	Jan-Apr	Rate(3)	
Homicide	0	0.0	0	-	1	1.0	1	1.0	0	0.0	-100.0
Attempted Murder	0	0.0	0	-	1	1.0	1	1.0	0	0.0	-
Robbery/Extortion	49	51.6	66	69.5	66	69.1	75	78.5	50	52.4	-33.3
Assault	422	444.7	406	427.8	501	524.6	480	502.6	380	397.9	-20.8
Sexual Assault	40	42.2	28	29.5	22	23.0	43	45.0	34	35.6	-20.9
Criminal Harassment	16	16.9	20	21.1	15	15.7	29	30.4	30	31.4	3.4
Uttering Threats	111	117.0	122	128.6	118	123.6	134	140.3	101	105.8	-24.6
Arson - Disregard for Life	3	3.2	2	2.1	0	0.0	0	0.0	1	1.0	-

Crime Against Property (January – April)

	2007		2008		2009		2010		2011		% Change 2010 - 2011(4)
	Jan-Apr	Rate(3)	Jan-Apr	Rate(3)	Jan-Apr	Rate(3)	Jan-Apr	Rate(3)	Jan-Apr	Rate(3)	
B&E Business	162	170.7	137	144.4	70	73.3	61	63.9	57	59.7	-6.6
B&E-Other	77	81.1	71	74.8	50	52.4	62	64.9	31	32.5	-50.0
B&E-Residence	256	269.8	253	266.6	95	99.5	153	160.2	100	104.7	-34.6
Fraud/Counterfeit Currency	263	277.1	201	211.8	171	179.1	212	222.0	121	126.7	-42.9
Possession of Stolen Property/Break and Enter Tools	109	114.9	84	88.5	65	68.1	48	50.3	27	28.3	-43.8
Theft Over \$5000	10	10.5	11	11.6	11	11.5	9	9.4	6	6.3	-33.3
Theft Under \$5000	501	527.9	403	424.7	363	380.1	319	334.0	267	279.6	-16.3
Theft from Motor Vehicle	705	742.9	801	844.1	604	632.5	639	669.1	822	860.7	28.6
Theft of Motor Vehicle	206	217.1	96	101.2	86	90.1	90	94.2	63	66.0	-30.0
Take Vehicle without Consent	12	12.6	21	22.1	12	12.6	5	5.2	3	3.1	-40.0
Theft of Bicycle	106	111.7	136	143.3	98	102.6	69	72.3	68	71.2	-1.4
Shoplifting	355	374.1	313	329.8	388	406.3	406	425.1	302	316.2	-25.6
Arson	14	14.8	13	13.7	8	8.4	9	9.4	3	3.1	-66.7

Other Criminal Code Offences (January – April)

	2007		2008		2009		2010		2011		% Change 2010 - 2011(4)
	Jan-Apr	Rate(3)	Jan-Apr	Rate(3)	Jan-Apr	Rate(3)	Jan-Apr	Rate(3)	Jan-Apr	Rate(3)	
Bail Violations/Breach of Probation	203	213.9	193	203.4	206	215.7	213	223.0	140	146.6	-34.3
Domestic Dispute	286	301.4	279	294.0	281	294.2	245	256.5	301	315.2	22.9
Drugs	285	300.3	295	310.9	249	260.7	209	218.9	277	290.1	32.5
Indecent Acts	17	17.9	18	19.0	25	26.2	17	17.8	33	34.6	94.1
Mischief	534	562.7	702	739.7	675	706.8	524	548.7	498	521.5	-5.0
Offensive Weapons	84	88.5	63	66.4	63	66.0	44	46.1	46	48.2	4.5

Traffic Offences (January – April)

	2007		2008		2009		2010		2011		% Change 2010 - 2011(4)
	Jan-Apr	Rate(3)	Jan-Apr	Rate(3)	Jan-Apr	Rate(3)	Jan-Apr	Rate(3)	Jan-Apr	Rate(3)	
Traffic - Collisions	261	275.0	266	280.3	257	269.1	278	291.1	307	321.5	10.4
Traffic - Fatal	0	0.0	0	0.0	0	0.0	1	1.0	0	0.0	-
Traffic - Other	141	148.6	131	138.0	114	119.4	163	170.7	220	230.4	35.0
Dangerous Operation of Motor Vehicle	11	11.6	23	24.2	45	47.1	21	22.0	5	5.2	-76.2
Fail to Remain	119	125.4	109	114.9	104	108.9	78	81.7	32	33.5	-59.0
Impaired/Refuse	103	108.5	143	150.7	137	143.5	136	142.4	116	121.5	-14.7

Calls for Service (January – April)

	2007				2008				2009				2010				2011				% Change 2009 - 2010(4)
	Vic	% of Total	Esq	% of Total	Vic	% of Total	Esq	% of Total	Vic	% of Total	Esq	% of Total	Vic	% of Total	Esq	% of Total	Vic	% of Total	Esq	% of Total	
Priority 1	708.0	82.9	146.0	17.1	807.0	85.6	136.0	14.4	916.0	85.8	152.0	14.2	948.0	80.4	231.0	19.6	992.0	83.3	199.0	16.7	1.0
Priority 2	2878.0	88.6	371.0	11.4	3094.0	90.2	336.0	9.8	3110.0	90.0	347.0	10.0	3331.0	89.4	394.0	10.6	2802.0	87.7	393.0	12.3	-14.2
Priority 3	8117.0	89.8	919.0	10.2	7101.0	91.6	648.0	8.4	6714.0	90.9	672.0	9.1	6185.0	90.1	683.0	9.9	5671.0	90.3	611.0	9.7	-8.5
Priority 4	5677.0	91.8	510.0	8.2	5297.0	92.3	440.0	7.7	4431.0	91.4	417.0	8.6	4181.0	92.5	341.0	7.5	3811.0	89.4	453.0	10.6	-5.7
Other Alternative	22.0	91.7	2.0	8.3	32.0	94.1	2.0	5.9	16.0	94.1	1.0	5.9	4.0	100.0	0.0	0.0	2.0	66.7	1.0	33.3	-
Total - All Priorities	17402.0	89.9	1948.0	10.1	16331.0	91.3	1562.0	8.7	15187.0	90.5	1589.0	9.5	14649.0	89.9	1649.0	10.1	13278.0	88.9	1657.0	11.1	-8.4

Calls for Service by Priority and Neighbourhood: April, 2011

Neighbourhood	priority 1	priority 2	Priority 3	Priority 4	Other	Total	% of Total City	% of Grand Total
COLVILLE	3	12	20	23	0	58	3.5	0.4
DEVONSHIRE	11	23	38	61		133	8.0	0.9
DN1		2	4	2		8	0.5	0.1
ESQUIMALT VILLAGE	60	136	171	100		467	28.2	3.1
PANHANDLE	6	15	41	25		87	5.3	0.6
PARKLANDS	8	9	20	15		52	3.1	0.3
ROCKHEIGHTS	18	30	59	55		162	9.8	1.1
SAXE POINT	14	18	65	42		139	8.4	0.9
WEST BAY	19	43	49	42	1	154	9.3	1.0
SELKIRK	59	105	143	89		396	23.9	2.6
TANK FARM	0	0	0	0	0	0	0.0	0.0
ESQUIMALT TOTAL	198	393	610	454	1	1656	100.0	11.1
BURNSIDE GORGE	213	608	1013	553	0	2387	17.9	15.9
DOWNTOWN	143	571	1137	867		2718	20.4	18.2
FAIRFIELD	72	171	339	250		832	6.3	5.6
FERNWOOD	71	176	336	243		826	6.2	5.5
GONZALES	13	30	114	45		202	1.5	1.3
HARRIS GREEN	74	224	422	225		945	7.1	6.3
HILLSIDE QUADRA	77	173	344	243	1	838	6.3	5.6
JAMES BAY	64	184	327	214		789	5.9	5.3
NORTH JUBILEE	32	51	51	37		171	1.3	1.1
NORTH PARK	83	258	839	535		1715	12.9	11.5
OAKLANDS	54	119	277	227		677	5.1	4.5
ROCKLAND	12	32	57	56	1	158	1.2	1.1
SOUTH JUBILEE	23	83	154	110		370	2.8	2.5
VIC WEST	61	123	261	206		651	4.9	4.3
UNKNOWN		2	19	10		31	0.2	0.2
VICTORIA TOTAL	992	2805	5690	3821	2	13310	100.0	88.9
GRAND TOTAL						14966		100.0