



ARCHIVED - Archiving Content

Archived Content

Information identified as archived is provided for reference, research or recordkeeping purposes. It is not subject to the Government of Canada Web Standards and has not been altered or updated since it was archived. Please contact us to request a format other than those available.

ARCHIVÉE - Contenu archivé

Contenu archivé

L'information dont il est indiqué qu'elle est archivée est fournie à des fins de référence, de recherche ou de tenue de documents. Elle n'est pas assujettie aux normes Web du gouvernement du Canada et elle n'a pas été modifiée ou mise à jour depuis son archivage. Pour obtenir cette information dans un autre format, veuillez communiquer avec nous.

This document is archival in nature and is intended for those who wish to consult archival documents made available from the collection of Public Safety Canada.

Some of these documents are available in only one official language. Translation, to be provided by Public Safety Canada, is available upon request.

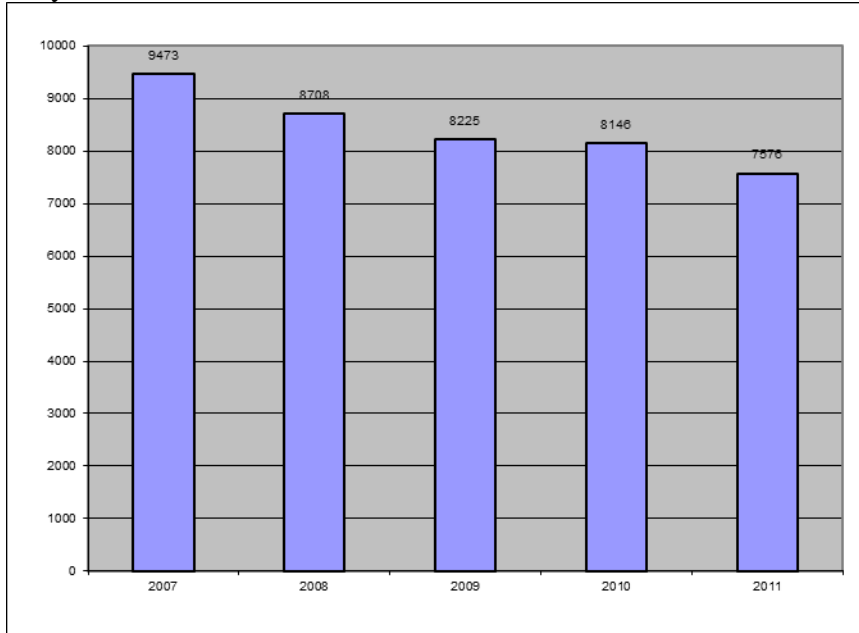
Le présent document a une valeur archivistique et fait partie des documents d'archives rendus disponibles par Sécurité publique Canada à ceux qui souhaitent consulter ces documents issus de sa collection.

Certains de ces documents ne sont disponibles que dans une langue officielle. Sécurité publique Canada fournira une traduction sur demande.

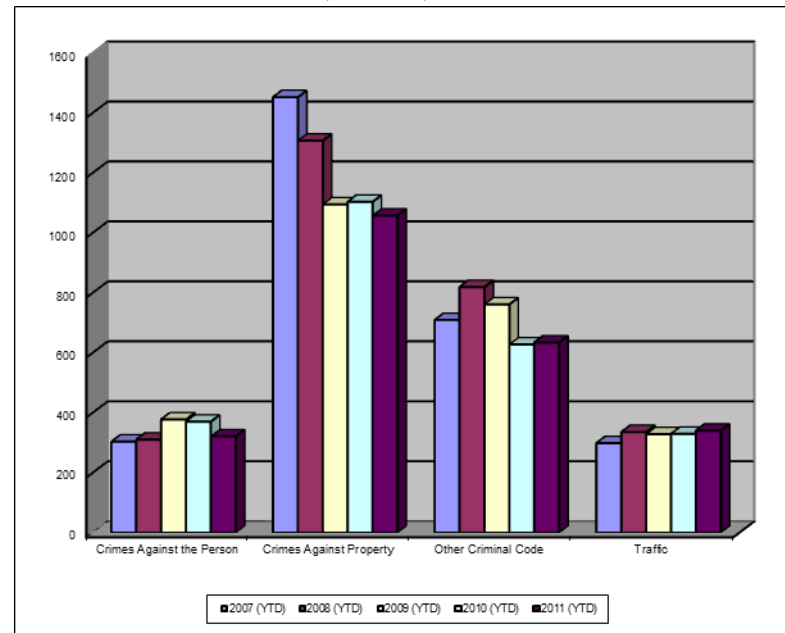


Crime Trends for Victoria and Esquimalt 2007 – 2011 ^(1,2) January - February

Key Crime Trends



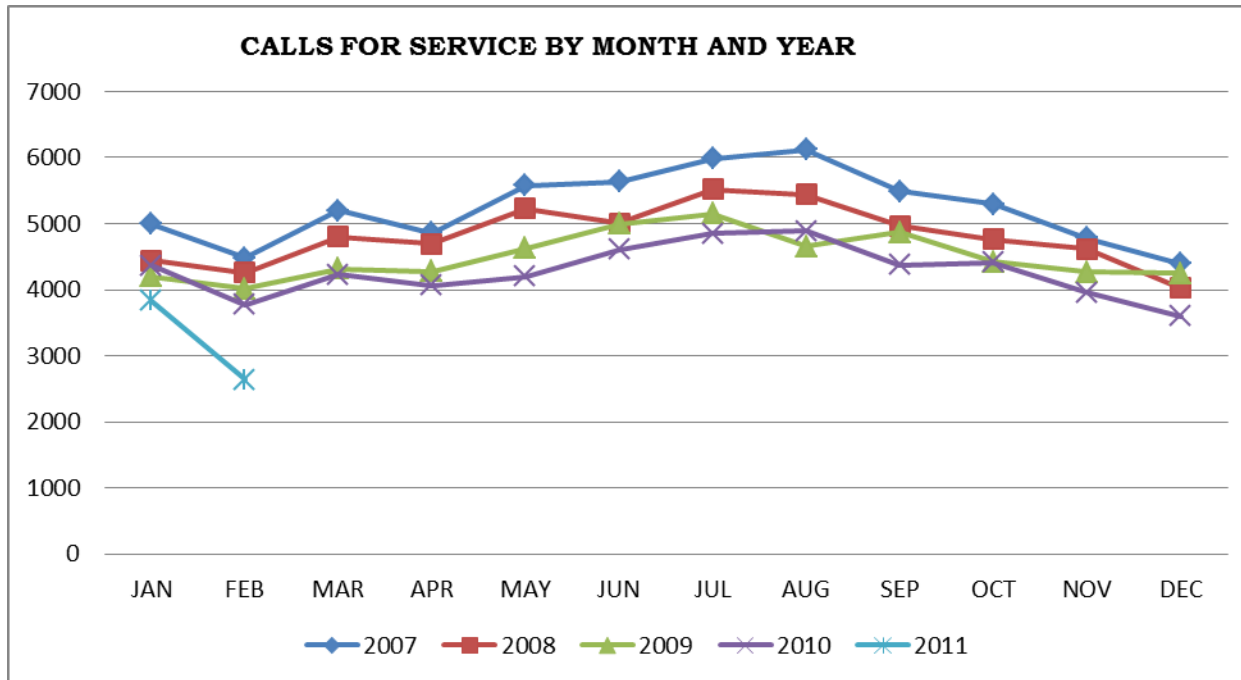
Total Calls for Service (Annual)



Notes

1. The data presented are taken from the Police Records Information Management Environment (PRIME) database. Data are coded and analyzed according to the requirements of the violation coding structure for Uniform Crime Reporting (UCR) survey as set up by Statistics Canada.
2. The crime statistics published in this report are accurate on the day that they were analyzed. Due to ongoing police investigation and internal data quality control efforts, this information is subject to change, including addition, deletion and reclassification of any and all data. Rates and percentages have been rounded.
3. As provided by the City of Victoria, the 2006 and 2007 population was 94,897; for 2008 – 2010 population is 95,499..
4. The % change is based on the actual values and are subject to (2).

CALLS FOR SERVICE BY MONTH AND YEAR



Key Crime Trends (January – February)

	2007		2008		2009		2010		2011		% Change 2010 - 2011(4)
	Jan-Feb	Rate(3)	Jan-Feb	Rate(3)	Jan-Feb	Rate(3)	Jan-Feb	Rate(3)	Jan-Feb	Rate(3)	
Crimes Against the Person	303	319.3	310	326.7	377	394.8	370	387.4	321	336.1	-13.2
Crimes Against Property	1452	1530.1	1307	1377.3	1094	1145.6	1103	1155.0	1057	1106.8	-4.2
Other Criminal Code of Canada Offences	709	747.1	819	863.0	761	796.9	627	656.6	634	663.9	1.1
Total CCC Offences Excluding Traffic	2464	2596.5	2436	2567.0	2232	2337.2	2100	2199.0	2012	2106.8	-4.2
Traffic Offences	298	314.0	335	353.0	328	343.5	329	344.5	340	356.0	3.3
Total CCC Offences and Traffic	2762	2910.5	2771	2920.0	2560	2680.7	2429	2543.5	2352	2462.9	-3.2

Crimes Against Person (January – February)

	2007		2008		2009		2010		2011		% Change 2010 - 2011(4)
	Jan-Feb	Rate(3)	Jan-Feb	Rate(3)	Jan-Feb	Rate(3)	Jan-Feb	Rate(3)	Jan-Feb	Rate(3)	
Homicide	0	0.0	0	-	1	1.0	1	1.0	0	0.0	-100.0
Attempted Murder	0	0.0	0	-	0	0.0	0	0.0	0	0.0	-
Robbery/Extortion	25	26.3	37	39.0	32	33.5	40	41.9	31	32.5	-22.5
Assault	196	206.5	180	189.7	266	278.5	225	235.6	203	212.6	-9.8
Sexual Assault	17	17.9	20	21.1	13	13.6	29	30.4	20	20.9	-31.0
Criminal Harassment	10	10.5	6	6.3	7	7.3	17	17.8	18	18.8	5.9
Uttering Threats	53	55.9	65	68.5	58	60.7	58	60.7	48	50.3	-17.2
Arson - Disregard for Life	2	2.1	1	1.1	0	0.0	0	0.0	1	1.0	-

Crimes Against Property (January – February)

	2007		2008		2009		2010		2011		% Change 2010 - 2011(4)
	Jan-Feb	Rate(3)	Jan-Feb	Rate(3)	Jan-Feb	Rate(3)	Jan-Feb	Rate(3)	Jan-Feb	Rate(3)	
B&E Business	103	108.5	79	83.2	40	41.9	40	41.9	34	35.6	-15.0
B&E-Other	46	48.5	44	46.4	35	36.6	40	41.9	14	14.7	-65.0
B&E-Residence	154	162.3	116	122.2	56	58.6	80	83.8	63	66.0	-21.3
Fraud/Counterfeit Currency	115	121.2	114	120.1	83	86.9	76	79.6	65	68.1	-14.5
Possession of Stolen Property/Break and Enter Tools	59	62.2	41	43.2	36	37.7	21	22.0	16	16.8	-23.8
Theft Over \$5000	2	2.1	5	5.3	6	6.3	5	5.2	2	2.1	-60.0
Theft Under \$5000	258	271.9	195	205.5	199	208.4	162	169.6	143	149.7	-11.7
Theft from Motor Vehicle	406	427.8	419	441.5	320	335.1	373	390.6	524	548.7	40.5
Theft of Motor Vehicle	91	95.9	59	62.2	61	63.9	62	64.9	35	36.6	-43.5
Take Vehicle without Consent	6	6.3	6	6.3	5	5.2	3	3.1	1	1.0	-66.7
Theft of Bicycle	36	37.9	45	47.4	47	49.2	41	42.9	30	31.4	-26.8
Shoplifting	170	179.1	180	189.7	200	209.4	195	204.2	129	135.1	-33.8
Arson	6	6.3	4	4.2	6	6.3	5	5.2	1	1.0	-80.0

Other Criminal Code Offences (January – February)

	2007		2008		2009		2010		2011		% Change 2010 - 2011(4)
	Jan-Feb	Rate(3)	Jan-Feb	Rate(3)	Jan-Feb	Rate(3)	Jan-Feb	Rate(3)	Jan-Feb	Rate(3)	
Bail Violations/Breach of Probation	132	139.1	142	149.6	105	109.9	106	111.0	54	56.5	-49.1
Domestic Dispute	139	146.5	133	140.2	127	133.0	157	164.4	156	163.4	-0.6
Drugs	135	142.3	150	158.1	118	123.6	87	91.1	129	135.1	48.3
Indecent Acts	10	10.5	6	6.3	14	14.7	5	5.2	9	9.4	80.0
Mischief	256	269.8	350	368.8	368	385.3	248	259.7	259	271.2	4.4
Offensive Weapons	37	39.0	38	40.0	29	30.4	24	25.1	27	28.3	12.5

Traffic Offences (January – February)

	2007		2008		2009		2010		2011		% Change 2010 - 2011(4)
	Jan-Feb	Rate(3)	Jan-Feb	Rate(3)	Jan-Feb	Rate(3)	Jan-Feb	Rate(3)	Jan-Feb	Rate(3)	
Traffic - Collisions	122	128.6	135	142.3	120	125.7	139	145.6	141	147.6	1.4
Traffic - Fatal	0	0.0	0	0.0	0	0.0	0	0.0	0	0.0	-
Traffic - Other	57	60.1	75	79.0	65	68.1	87	91.1	122	127.8	40.2
Dangerous Operation of Motor Vehicle	4	4.2	15	15.8	21	22.0	9	9.4	2	2.1	-77.8
Fail to Remain	58	61.1	47	49.5	54	56.5	34	35.6	16	16.8	-52.9
Impaired/Refuse	57	60.1	63	66.4	68	71.2	60	62.8	58	60.7	-3.3

Calls for Service (January – February)

	2007				2008				2009				2010				2011				% Change 2009 - 2010(4)
	Vic	% of Total	Esq	% of Total	Vic	% of Total	Esq	% of Total	Vic	% of Total	Esq	% of Total	Vic	% of Total	Esq	% of Total	Vic	% of Total	Esq	% of Total	
Priority 1	329.0	81.8	73.0	18.2	373.0	85.0	66.0	15.0	407.0	85.3	70.0	14.7	476.0	82.9	98.0	17.1	453.0	80.6	109.0	19.4	-2.1
Priority 2	1249.0	89.8	142.0	10.2	1507.0	89.6	174.0	10.4	1488.0	89.2	180.0	10.8	1571.0	88.8	199.0	11.2	1322.0	86.6	205.0	13.4	-13.7
Priority 3	4306.0	91.1	423.0	8.9	3312.0	91.2	318.0	8.8	3268.0	90.7	337.0	9.3	3110.0	90.6	322.0	9.4	2917.0	90.9	292.0	9.1	-6.5
Priority 4	2637.0	92.3	221.0	7.7	2559.0	91.8	229.0	8.2	2237.0	91.3	214.0	8.7	2136.0	92.7	169.0	7.3	1906.0	87.4	274.0	12.6	-5.4
Other Alternative	10.0	90.9	1.0	9.1	9.0	100.0	0.0	0.0	6.0	100.0	0.0	0.0	0.0	-	0.0	-	1.0	100.0	0.0	0.0	-
Total - All Priorities	8531.0	90.8	860.0	9.2	7760.0	90.8	787.0	9.2	7406.0	90.2	801.0	9.8	7293.0	90.2	788.0	9.8	6599.0	88.2	880.0	11.8	-7.4

Calls for Service by Priority and Neighbourhood: February, 2011

Neighbourhood	priority 1	priority 2	Priority 3	Priority 4	Other	Total	% of Total City	% of Grand Total
COLVILLE	1	2	5	4	1	12	2.7	0.3
DEVONSHIRE	1	3	13	24		41	9.4	1.0
DN1			3			3	0.7	0.1
ESQUIMALT VILLAGE	15	40	42	17		114	26.1	2.7
PANHANDLE	1	2	11	5		19	4.3	0.5
PARKLANDS	2	4	6	8		20	4.6	0.5
ROCKHEIGHTS	7	5	15	17		44	10.1	1.1
SAXE POINT	2	6	16	18		42	9.6	1.0
WEST BAY	9	6	7	18		40	9.2	1.0
SELKIRK	19	31	31	21		102	23.3	2.5
TANK FARM	0	0	0	0	0	0	0.0	0.0
ESQUIMALT TOTAL	57	99	149	132		437	100.0	10.5
BURNSIDE GORGE	47	129	256	132		564	15.1	13.6
DOWNTOWN	36	153	255	184		628	16.9	15.1
FAIRFIELD	10	46	78	53		187	5.0	4.5
FERNWOOD	15	49	77	60		201	5.4	4.8
GONZALES	2	14	31	8		55	1.5	1.3
HARRIS GREEN	16	43	83	56		198	5.3	4.8
HILLSIDE QUADRA	15	31	94	55		195	5.2	4.7
JAMES BAY	13	44	71	48		176	4.7	4.2
NORTH JUBILEE	6	9	18	5		38	1.0	0.9
NORTH PARK	20	68	367	112		567	15.2	13.6
OAKLANDS	12	22	55	38		127	3.4	3.1
ROCKLAND	3	7	17	12		39	1.0	0.9
SOUTH JUBILEE	5	19	28	38		90	2.4	2.2
VIC WEST	16	26	56	71		169	4.5	4.1
UNKNOWN	1	2	22	14		39	1.0	0.9
VICTORIA TOTAL	217	662	1508	886		3723	100.0	89.5
GRAND TOTAL						4160		100.0

TOP 25 CALLS FOR SERVICE BY NEIGHBOURHOOD: February, 2011

TYPE OF CALL FOR SERVICE	COLVILLE	DEVONSHIRE	DN1	ESQUIMALT VILLAGE	PANHANDLE	PARKLANDS	ROCKHEIGHTS	SAXE POINT	SELKIRK
THEFT	1	2		6	3	7	5	2	8
OTHER CRIMINAL CODE	1			3			1		
ASSIST POLICE/FIRE/AMBULANCE	2	1		6	1		4	1	
UNWANTED PERSON		4		7	2	1	3	3	3
PROPERTY	1			5	2		3	1	1
CHECK WELLBEING	1	2		7		1	1	4	1
ABANDONED 911		4		4	1		2	1	3
ASSIST GENERAL PUBLIC				2		1	2		
DISTURBANCE	1			4	1		1	1	
DOMESTIC IN PROGRESS		2		5	1		1	1	
SUSPICIOUS PERSON		3		4		1	1		3
TRAFFIC INCIDENT		1		4	1	1	1	1	1
MISCHIEF		1		2		3	1	1	
DRUGS		1	1	5			2		2
FIGHT	1	1		1		1	2		
PARKING		1		2			2		4
ASSAULT			1	1	1				1
SHOPLIFTER				1				1	1
ALARM	1	1		3				1	1
SUSPICIOUS CIRCUMSTANCES	2			1				3	
BREAK AND ENTER				3	1			2	1
IMPAIRED							2	1	1
SIPP/DIPP		2	1	3				2	
SUICIDAL PERSON		2						2	
INTELLIGENCE INFORMATION		2		4	1			1	
Grand Total	12	41	3	114	19	20	44	42	40

TOP 25 CALLS FOR SERVICE BY NEIGHBOURHOOD: February, 2011

TYPE OF CALL FOR SERVICE	WEST BAY	BURNSIDE GORGE	DOWNTOWN	FAIRFIELD	FERNWOOD	GONZALES	HARRIS GREEN	HILLSIDE QUADRA
THEFT	3	54	40	21	14	1	18	12
OTHER CRIMINAL CODE	6	65	64	6	2	2	54	6
ASSIST POLICE/FIRE/AMBULANCE	9	26	37	6	19	5	9	14
UNWANTED PERSON	8	24	36	12	14	5	10	7
PROPERTY	3	29	38	12	9	1	9	13
CHECK WELLBEING	7	23	29	8	12	2	5	12
ABANDONED 911	8	15	23	13	8	1	5	6
ASSIST GENERAL PUBLIC	5	20	26	8	8	3	14	9
DISTURBANCE	5	21	24	9	7	4		8
DOMESTIC IN PROGRESS	4	15	27	6	6	4	6	5
SUSPICIOUS PERSON	1	16	16	10	4	1	5	6
TRAFFIC INCIDENT	5	12	16	2	9	1	1	
MISCHIEF	1	16	14	4	3	2	2	7
DRUGS	1	13	9	2	3	1	3	3
FIGHT		7	13	5	1	2	1	5
PARKING	2	11	8	4	6		1	3
ASSAULT	3	4	15	3	2	1		6
SHOPLIFTER	2	14	8	4	6			3
ALARM	2	13	5	3	2	1	5	7
SUSPICIOUS CIRCUMSTANCES	4	7	8	4	4	2	4	2
BREAK AND ENTER	2	10	7	1			2	6
IMPAIRED	1	7	9	2	4	2	5	3
SIPP/DIPP		7	8	1	4	2	2	1
SUICIDAL PERSON	2	5	11	1	5		2	3
INTELLIGENCE INFORMATION	1	11	7	3	3		1	1
Grand Total	102	564	628	187	201	55	198	195

TOP 25 CALLS FOR SERVICE BY NEIGHBOURHOOD: February, 2011

TYPE OF CALL FOR SERVICE	JAMES BAY	NORTH JUBILEE	NORTH PARK	OAKLANDS	ROCKLAND	SOUTH JUBILEE	VIC WEST	UNKNOWN	Grand Total
THEFT	16	4	38	6	5	10	14	2	298
OTHER CRIMINAL CODE	3	1	63	3	1	3	3	1	289
ASSIST POLICE/FIRE/AMBULANCE	14		28	7		10	12	1	213
UNWANTED PERSON	9	2	32	9	3	3	9	2	210
PROPERTY	11	1	27	5	1	6	7		186
CHECK WELLBEING	7		29	7	2	7	10	4	181
ABANDONED 911	5	3	27	4	1	3	13	1	151
ASSIST GENERAL PUBLIC	1	5	25	1		1	6	1	144
DISTURBANCE	5	1	12	7	2		4	2	119
DOMESTIC IN PROGRESS	6	1	14	3		3	4	1	115
SUSPICIOUS PERSON	8	2	11	8	2	2	3	1	108
TRAFFIC INCIDENT	4	1	10	2	1	2	7	2	85
MISCHIEF	6	2	7	3	1	5	3		84
DRUGS	3	1	14	3		5	3		75
FIGHT	3		11	2	2	2	6	2	68
PARKING	6	1	9		2	1	4		68
ASSAULT	2	1	12	4	1	1	3	1	65
SHOPLIFTER	4		12	3		1	4		65
ALARM	4	1	5	5		2	1	1	64
SUSPICIOUS CIRCUMSTANCES	2		9	4		1	3	3	63
BREAK AND ENTER	5		13	1	1		2	2	59
IMPAIRED	2	2	10				1	1	53
SIPP/DIPP	3		12	2		1	1		52
SUICIDAL PERSON	1	1	9			2	5	1	52
INTELLIGENCE INFORMATION	3		3	4		1	2	1	50
Grand Total	176	38	567	127	39	90	169	39	3735