



ARCHIVED - Archiving Content

Archived Content

Information identified as archived is provided for reference, research or recordkeeping purposes. It is not subject to the Government of Canada Web Standards and has not been altered or updated since it was archived. Please contact us to request a format other than those available.

ARCHIVÉE - Contenu archivé

Contenu archivé

L'information dont il est indiqué qu'elle est archivée est fournie à des fins de référence, de recherche ou de tenue de documents. Elle n'est pas assujettie aux normes Web du gouvernement du Canada et elle n'a pas été modifiée ou mise à jour depuis son archivage. Pour obtenir cette information dans un autre format, veuillez communiquer avec nous.

This document is archival in nature and is intended for those who wish to consult archival documents made available from the collection of Public Safety Canada.

Some of these documents are available in only one official language. Translation, to be provided by Public Safety Canada, is available upon request.

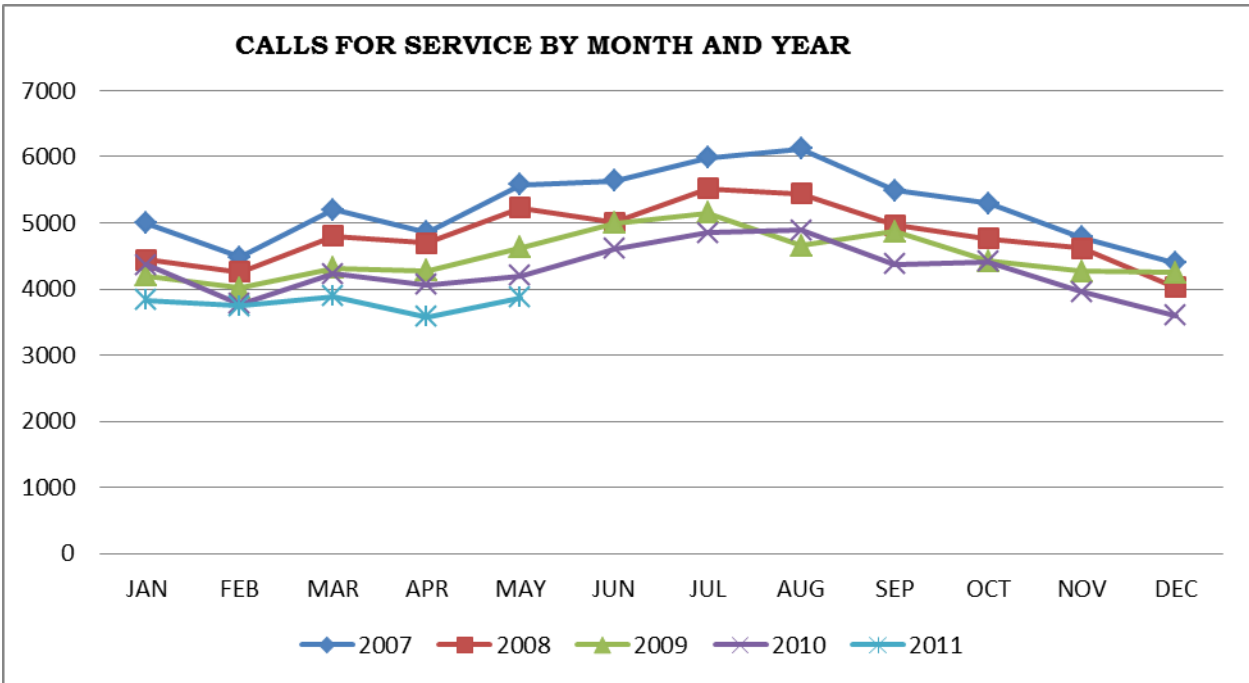
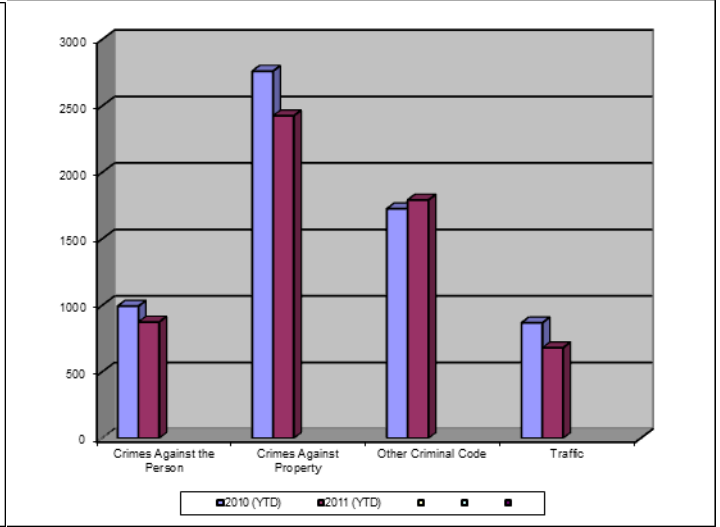
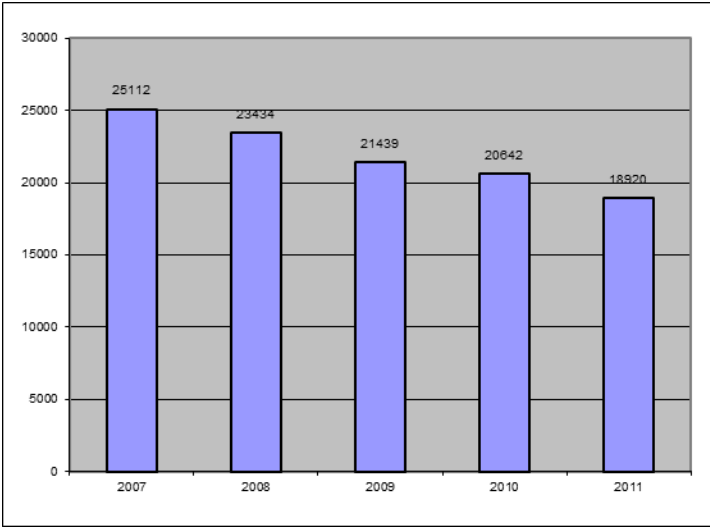
Le présent document a une valeur archivistique et fait partie des documents d'archives rendus disponibles par Sécurité publique Canada à ceux qui souhaitent consulter ces documents issus de sa collection.

Certains de ces documents ne sont disponibles que dans une langue officielle. Sécurité publique Canada fournira une traduction sur demande.

Crime Trends for Victoria and Esquimalt : January to May 31, 2010 – 2011 (1,2)

Key Crime Trends

Total Calls for Service (Annual)



Key Crime Trends (YTD- January – May 31)

	2010		2011		% Change 2010 - 2011(4)
	Jan-May	Rate(3)	Jan-May	Rate(3)	
Crime Against the Person	993	1039.8	874	915.2	-12.0
Crimes Against Property	2761	2891.1	2425	2539.3	-12.2
Other Criminal Code of Canada Offences	1726	1807.3	1792	1876.5	3.8
Total CCC Offences Exclud. Traffic	5480	5738.3	5091	5330.9	-7.1
Traffic Offences	868	908.9	953	997.9	9.8
Total CCC Offences and Traffic	6348	6647.2	6044	6328.9	-4.8

Crimes Against Person (YTD January – May 31)

	2010		2011		% Change 2010 - 2011(4)
	Jan-May	Rate(3)	Jan-May	Rate(3)	
Homicide	1	1.0	0	0.0	-100.0
Attempted Murder	1	1.0	1	1.0	-
Robbery/Extortion	95	99.5	74	77.5	-22.1
Assault	627	656.6	527	551.8	-15.9
Sexual Assault	52	54.5	52	54.5	0.0
Criminal Harassment	35	36.6	45	47.1	28.6
Uttering Threats	183	191.6	173	181.2	-5.5
Arson - Disregard for Life	0	0.0	2	2.1	-

Notes:

1. The data presented is taken from the Police Records Information Management Environment (PRIME) database. Data that is coded and analyzed according to the requirements of the violation coding structure for Uniform Crime Reporting (UCR) survey as set up by Statistics Canada.
2. The crime statistics published in this report are accurate on the day that they were analyzed. Due to ongoing police investigation and internal data quality control efforts, this information is subject to change, including addition, deletion and reclassification of any and all data. Rates and percentages have been rounded.
3. Rate is calculated on a per 100,000 rate for each month and year. As provided by Capital Region District, the 2010 and 2011 population is estimated at 100,657.
4. The % change is based on the actual values and is subject to (2).

Crimes Against Property (YTD January – May 31)

			2010		2011		% Change 2010 - 2011(4)
			Jan-May	Rate(3)	Jan-May	Rate(3)	
B&E Business			83	86.9	75	78.5	-9.6
B&E-Other			78	81.7	62	64.9	-20.5
B&E-Residence			212	222.0	138	144.5	-34.9
Fraud			279	292.1	158	165.4	-43.4
Possession of Stolen Property/Break and Enter Tools			62	64.9	45	47.1	-27.4
Theft Over \$5000			12	12.6	6	6.3	-50.0
Theft Under \$5000			437	457.6	357	373.8	-18.3
Theft from Motor Vehicle			808	846.1	970	1015.7	20.0
Theft of Motor Vehicle			154	161.3	90	94.2	-41.6
Take Vehicle without Consent			6	6.3	4	4.2	-33.3
Theft of Bicycle			95	99.5	95	99.5	0.0
Shoplifting			521	545.6	417	436.7	-20.0
Arson			13	13.6	7	7.3	-46.2

Other Criminal Code Offences (YTD January – May 31)

			2010		2011		% Change 2010 - 2011(4)
			Jan-May	Rate(3)	Jan-May	Rate(3)	
Bail Violations/Breach of Probation			295	308.9	216	226.2	-26.8
Domestic Dispute			373	390.6	405	424.1	8.6
Drugs			275	288.0	395	413.6	43.6
Indecent Acts			25	26.2	50	52.4	100.0
Mischief			688	720.4	644	674.4	-6.4
Offensive Weapons			70	73.3	82	85.9	17.1

Traffic Offences (YTD January – May 31)

			2010		2011		% Change 2010 - 2011(4)
			Jan-May	Rate(3)	Jan-May	Rate(3)	
Traffic - Collisions			351	367.5	383	401.1	9.1
Traffic - Fatal			1	1.0	0	0.0	-
Traffic - Other			198	207.3	235	246.1	18.7
Dangerous Operation of Motor Vehicle			31	32.5	11	11.5	-64.5
Fail to Remain			99	103.7	76	79.6	-23.2
Impaired/Refuse			188	196.9	248	259.7	31.9

Calls for Service (YTD January – May 31, 2011)

					2010				2011				Vic	
					Vic	% of Total	Esq	% of Total	Vic	% of Total	Esq	% of Total		% Change 2010 - 2011(4)
Priority 1: Emergency, dispatch immediate, high probability of death or grievous bodily harm					1188.0	80.5	288.0	19.5	1237.0	83.8	239.0	16.2	1.0	1188.0
Priority 2: Urgent, dispatch immediate, not life threatening in nature					1447.0	74.2	504.0	25.8	3566.0	87.9	490.0	12.1	-14.2	1447.0
Priority 3: Routine: non-urgent					7722.0	89.8	873.0	10.2	7218.0	90.6	750.0	9.4	-8.5	7722.0
Priority 4: May or may not be dispatched, dependant on agency					5755.0	92.8	444.0	7.2	4785.0	90.0	529.0	10.0	-5.7	5755.0
Other Alternative					5.0	100.0	0.0	0.0	2.0	66.7	1.0	33.3	-	5.0
Total - All Priorities					16117.0	88.4	2109.0	11.6	16808.0	89.3	2009.0	10.7	-8.4	16117.0

Calls for Service by Priority and Neighbourhood: January – May 31, 2011

<i>Neighbourhood</i>	<i>Priority 1</i>	<i>Priority 2</i>	<i>Priority 3</i>	<i>Priority 4</i>	<i>Other</i>	<i>Total</i>	<i>% of Total City</i>	<i>% of Grand total</i>
COLVILLE	4	16	20	24		64	3.2	0.3
DEVONSHIRE	12	29	45	66		152	7.6	0.8
DN1		2	4	2		8	0.4	0.0
ESQUIMALT VILLAGE	72	162	220	117		571	28.4	3.0
PANHANDLE	9	28	50	33		120	6.0	0.6
PARKLANDS	9	9	23	20		61	3.0	0.3
ROCKHEIGHTS	25	45	73	66		209	10.4	1.1
SAXE POINT	19	26	81	48		174	8.6	0.9
SELKIRK	21	53	66	46	1	187	9.3	1.0
WEST BAY	68	120	170	108		466	23.2	2.5
TANK FARM	0	0	0	0	0	0	0.0	0.0
ESQUIMALT TOTAL	239	490	752	530	1	2012	100.0	10.7
BURNSIDE GORGE	253	773	1299	685		3010	17.9	16.0
DOWNTOWN	182	730	1447	1074		3433	20.4	18.2
FAIRFIELD	90	226	456	312		1084	6.4	5.8
FERNWOOD	98	217	435	311		1061	6.3	5.6
GONZALES	18	37	177	61		293	1.7	1.6
HARRIS GREEN	88	278	538	290		1194	7.1	6.3
HILLSIDE QUADRA	99	214	439	294	1	1047	6.2	5.6
JAMES BAY	84	245	409	267		1005	6.0	5.3
NORTH JUBILEE	38	59	63	48		208	1.2	1.1
NORTH PARK	104	332	1006	700		2142	12.7	11.4
OAKLANDS	64	149	343	273		829	4.9	4.4
ROCKLAND	17	39	70	79	1	206	1.2	1.1
SOUTH JUBILEE	27	102	199	137		465	2.8	2.5
VIC WEST	75	168	335	253		831	4.9	4.4
UNKNOWN		2	19	10		31	0.2	0.2
VICTORIA TOTAL	1237	3569	7216	4784	2	16808	100.0	89.3
GRAND TOTAL						18820		100.0