



ARCHIVED - Archiving Content

Archived Content

Information identified as archived is provided for reference, research or recordkeeping purposes. It is not subject to the Government of Canada Web Standards and has not been altered or updated since it was archived. Please contact us to request a format other than those available.

ARCHIVÉE - Contenu archivé

Contenu archivé

L'information dont il est indiqué qu'elle est archivée est fournie à des fins de référence, de recherche ou de tenue de documents. Elle n'est pas assujettie aux normes Web du gouvernement du Canada et elle n'a pas été modifiée ou mise à jour depuis son archivage. Pour obtenir cette information dans un autre format, veuillez communiquer avec nous.

This document is archival in nature and is intended for those who wish to consult archival documents made available from the collection of Public Safety Canada.

Some of these documents are available in only one official language. Translation, to be provided by Public Safety Canada, is available upon request.

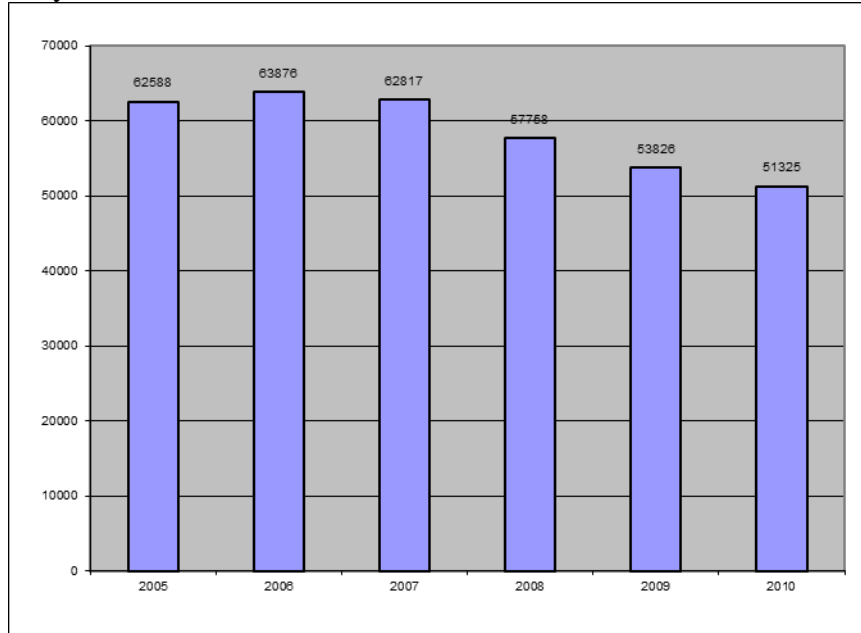
Le présent document a une valeur archivistique et fait partie des documents d'archives rendus disponibles par Sécurité publique Canada à ceux qui souhaitent consulter ces documents issus de sa collection.

Certains de ces documents ne sont disponibles que dans une langue officielle. Sécurité publique Canada fournira une traduction sur demande.

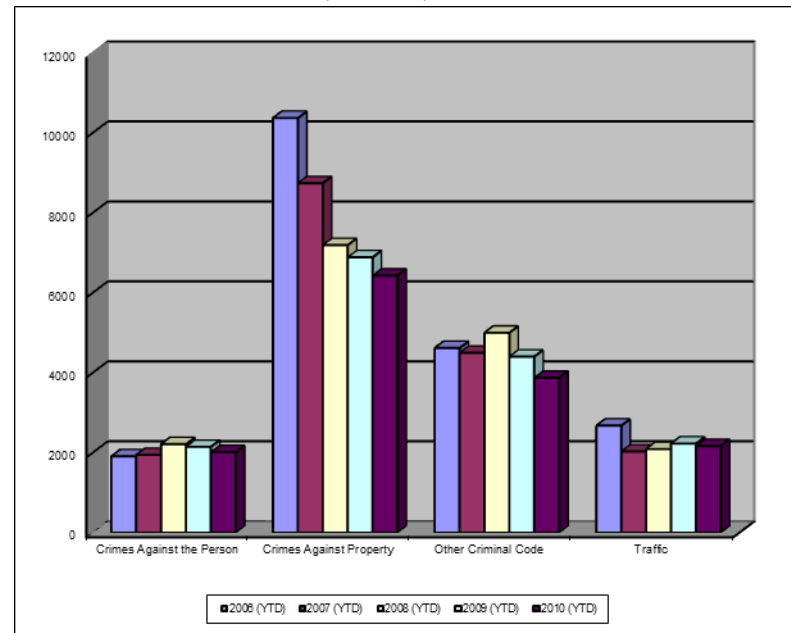


Crime Trends for Victoria and Esquimalt 2006 – 2010 ^(1,2) January to December

Key Crime Trends



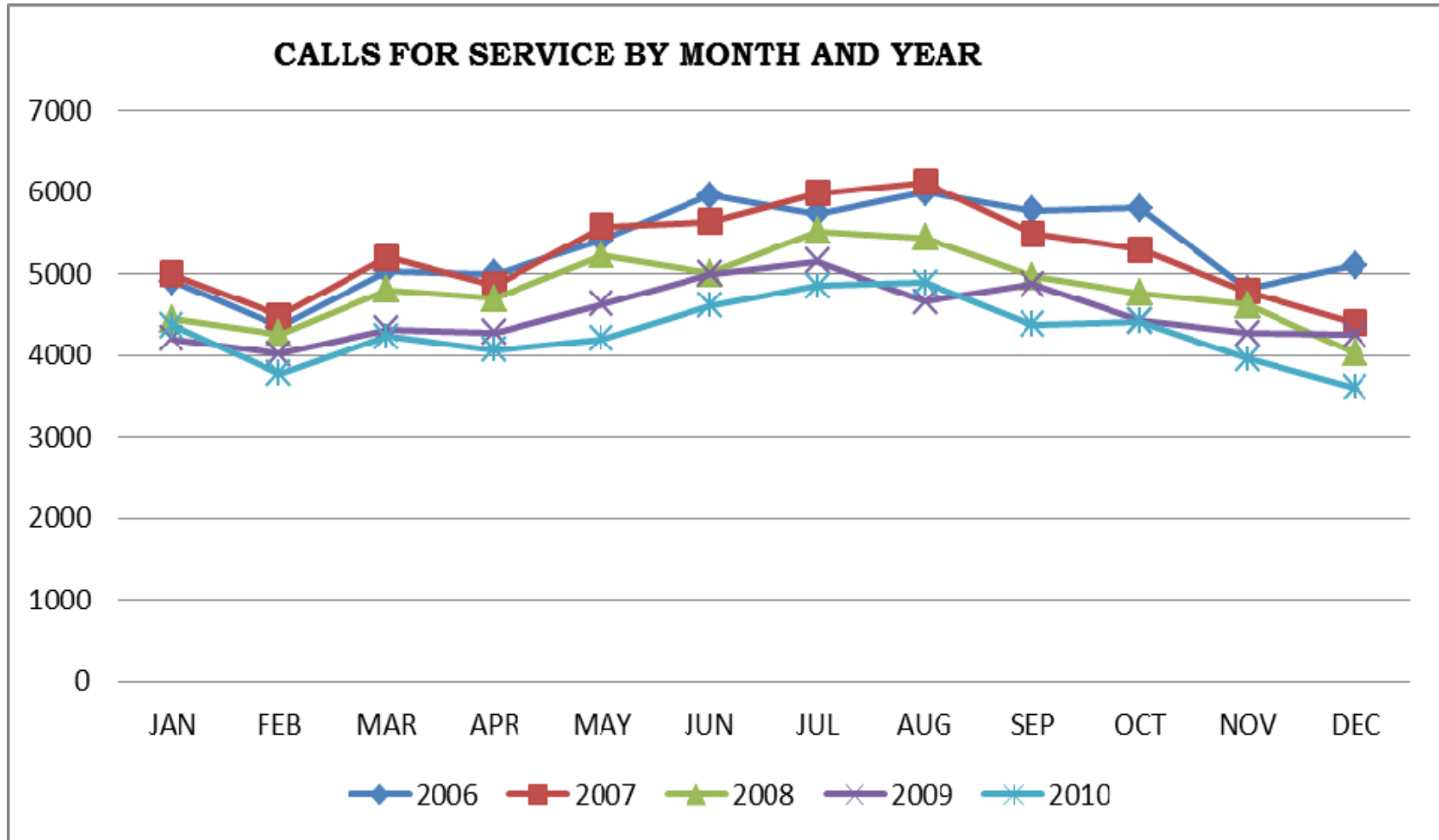
Total Calls for Service (Annual)



Notes

1. The data presented are taken from the Police Records Information Management Environment (PRIME) database. Data are coded and analyzed according to the requirements of the violation coding structure for Uniform Crime Reporting (UCR) survey as set up by Statistics Canada.
2. The crime statistics published in this report are accurate on the day that they were analyzed. Due to ongoing police investigation and internal data quality control efforts, this information is subject to change, including addition, deletion and reclassification of any and all data. Rates and percentages have been rounded.
3. As provided by the City of Victoria, the 2006 and 2007 population was 94,897; for 2008 – 2010 population is 95,499..
4. The % change is based on the actual values and are subject to (2).

CALLS FOR SERVICE BY MONTH AND YEAR



Key Crime Trends (January – December)

	2006		2007		2008		2009		2010		% Change 2009 - 2010(4)
	Jan-Dec	Rate(3)	Jan-Dec	Rate(3)	Jan-Dec	Rate(3)	Jan-Dec	Rate(3)	Jan-Dec	Rate(3)	
Crimes Against the Person	1905	2007.4	1942	2046.4	2210	2314.2	2143	2244.0	2011	2105.8	-6.2
Crimes Against Property	10369	10926.6	8739	9208.9	7188	7526.8	6883	7207.4	6430	6733.1	-6.6
Other Criminal Code of Canada Offences	4616	4864.2	4496	4737.8	4997	5232.5	4399	4606.3	3872	4054.5	-12.0
Total CCC Offences Excluding Traffic	16890	17798.2	15177	15993.1	14395	15073.5	13425	14057.7	12313	12893.3	-8.3
Traffic Offences	2674	2817.8	2029	2138.1	2088	2186.4	2224	2328.8	2164	2266.0	-2.7
Total CCC Offences and Traffic	19564	20616.0	17206	18131.2	16483	17259.9	15649	16386.6	14477	15159.3	-7.5

Crimes Against Person (January – December)

	2006		2007		2008		2009		2010		% Change 2009 - 2010(4)
	Jan-Dec	Rate(3)	Jan-Dec	Rate(3)	Jan-Dec	Rate(3)	Jan-Dec	Rate(3)	Jan-Dec	Rate(3)	
Homicide	3	3.2	-	-	1	1.0	2	2.1	1	1.0	-50.0
Attempted Murder	2	2.1	-	-	2	2.1	4	4.2	1	1.0	-75.0
Robbery/Extortion	172	181.2	188	198.1	182	190.6	207	216.8	199	208.4	-3.9
Assault	1247	1314.1	1273	1341.5	1468	1537.2	1416	1482.7	1321	1383.3	-6.7
Sexual Assault	95	100.1	74	78.0	96	100.5	76	79.6	104	108.9	36.8
Criminal Harassment	57	60.1	36	37.9	63	66.0	59	61.8	68	71.2	15.3
Uttering Threats	329	346.7	371	391.0	398	416.8	379	396.9	317	331.9	-16.4
Arson - Disregard for Life	11	11.6	4	4.2	5	5.2	5	5.2	-	-	-

Crimes Against Property (January – December)

	2006		2007		2008		2009		2010		% Change 2009 - 2010(4)
	Jan-Dec	Rate(3)	Jan-Dec	Rate(3)	Jan-Dec	Rate(3)	Jan-Dec	Rate(3)	Jan-Dec	Rate(3)	
B&E Business	602	634.4	551	580.6	362	379.1	215	225.1	167	174.9	-22.3
B&E-Other	463	487.9	245	258.2	280	293.2	199	208.4	142	148.7	-28.6
B&E-Residence	586	617.5	676	712.4	619	648.2	426	446.1	472	494.2	10.8
Fraud/Counterfeit Currency	705	742.9	721	759.8	616	645.0	513	537.2	596	624.1	16.2
Possession of Stolen Property/Break and Enter Tools	289	304.5	337	355.1	200	209.4	226	236.7	124	129.8	-45.1
Theft Over \$5000	30	31.6	25	26.3	24	25.1	32	33.5	24	25.1	-25.0
Theft Under \$5000	1544	1627.0	1458	1536.4	1194	1250.3	1276	1336.1	1072	1122.5	-16.0
Theft from Motor Vehicle	3784	3987.5	2570	2708.2	1979	2072.3	2012	2106.8	2061	2158.1	2.4
Theft of Motor Vehicle	608	640.7	504	531.1	358	374.9	375	392.7	257	269.1	-31.5
Take Vehicle without Consent	28	29.5	36	37.9	40	41.9	25	26.2	19	19.9	-24.0
Theft of Bicycle	601	633.3	505	532.2	462	483.8	382	400.0	322	337.2	-15.7
Shoplifting	1090	1148.6	1066	1123.3	1014	1061.8	1171	1226.2	1148	1202.1	-2.0
Arson	38	40.0	45	47.4	40	41.9	31	32.5	25	26.2	-19.4

Other Criminal Code Offences (January – December)

	2006		2007		2008		2009		2010		% Change 2009 - 2010(4)
	Jan-Dec	Rate(3)	Jan-Dec	Rate(3)	Jan-Dec	Rate(3)	Jan-Dec	Rate(3)	Jan-Dec	Rate(3)	
Bail Violations/Breach of Probation	904	952.6	843	888.3	649	679.6	626	655.5	602	630.4	-3.8
Domestic Dispute	933	983.2	771	812.5	939	983.3	921	964.4	948	992.7	2.9
Drugs	723	761.9	891	938.9	885	926.7	741	775.9	802	839.8	8.2
Indecent Acts	51	53.7	56	59.0	40	41.9	70	73.3	41	42.9	-41.4
Mischief	1819	1916.8	1719	1811.4	2298	2406.3	1878	1966.5	1353	1416.8	-28.0
Offensive Weapons	186	196.0	216	227.6	186	194.8	163	170.7	126	131.9	-22.7

Traffic Offences (January – December)

	2006		2007		2008		2009		2010		% Change 2009 - 2010(4)
	Jan-Dec	Rate(3)	Jan-Dec	Rate(3)	Jan-Dec	Rate(3)	Jan-Dec	Rate(3)	Jan-Dec	Rate(3)	
Traffic - Collisions	1201	1265.6	890	937.9	846	885.9	887	928.8	862	902.6	-2.8
Traffic - Fatal	2	2.1	1	1.1	0	0.0	1	1.0	1	1.0	0.0
Traffic - Other	769	810.4	458	482.6	380	397.9	511	535.1	780	816.8	52.6
Dangerous Operation of Motor Vehicle	24	25.3	31	32.7	97	101.6	86	90.1	29	30.4	-66.3
Fail to Remain	377	397.3	373	393.1	373	390.6	271	283.8	149	156.0	-45.0
Impaired/Refuse	301	317.2	276	290.8	392	410.5	468	490.1	343	359.2	-26.7

Calls for Service (January – December)

	2006				2007.0				2008.0				2009.0				2010.0				% Change 2009 - 2010(4)
	Vic	% of Total	Esq	% of Total	Vic	% of Total	Esq	% of Total	Vic	% of Total	Esq	% of Total	Vic	% of Total	Esq	% of Total	Vic	% of Total	Esq	% of Total	
Priority 1	2243.0	80.9	530.0	19.1	2415.0	84.5	444.0	15.5	2657.0	86.0	431.0	14.0	3002.0	85.7	499.0	14.3	2994.0	82.7	627.0	17.3	3.4
Priority 2	8640.0	87.9	1190.0	12.1	10145.0	86.2	1626.0	13.8	9559.0	89.8	1090.0	10.2	10060.0	89.5	1186.0	10.5	9895.0	88.9	1241.0	11.1	-1.0
Priority 3	27521.0	90.6	2841.0	9.4	24425.0	90.2	2668.0	9.8	22794.0	91.7	2074.0	8.3	20998.0	90.2	2285.0	9.8	19182.0	89.8	2181.0	10.2	-8.2
Priority 4	18330.0	90.4	1952.0	9.6	19142.0	92.2	1628.0	7.8	16571.0	92.3	1378.0	7.7	14585.0	91.5	1350.0	8.5	13437.0	92.0	1164.0	8.0	-8.4
Other Alternative	64.0	86.5	10.0	13.5	67.0	89.3	8.0	10.7	62.0	88.6	8.0	11.4	55.0	94.8	3.0	5.2	15.0	93.8	1.0	6.3	-69.8
Total - All Priorities	56798.0	89.7	6523.0	10.3	56194.0	89.8	6374.0	10.2	51643.0	91.2	4981.0	8.8	48700.0	90.1	5323.0	9.9	45523.0	89.7	5214.0	10.3	-6.1

Calls for Service by Priority and Neighbourhood: January – December, 2010

Neighbourhood	priority 1	priority 2	Priority 3	Priority 4	Other	Total	% of Total City	% of Grand Total
COLVILLE	18	39	57	50	1	165	3.2	0.3
DEVONSHIRE	39	86	138	105		368	7.1	0.7
DN1	1	2	6	2		11	0.2	0.0
ESQUIMALT VILLAGE	127	348	576	299		1350	25.9	2.7
PANHANDLE	34	90	161	89		374	7.2	0.7
PARKLANDS	25	33	73	35		166	3.2	0.3
ROCKHEIGHTS	68	102	268	147		585	11.2	1.1
SAXE POINT	35	96	169	88		388	7.4	0.8
WEST BAY	219	320	525	228		1292	24.8	2.5
SELKIRK	61	124	210	119		514	9.9	1.0
TANK FARM	0	0	0	0	0	0	0.0	0.0
ESQUIMALT TOTAL	627	1240	2183	1162	1	5213	100.0	10.2
BURNSIDE GORGE	556	1687	2761	1809	7	6820	14.9	13.4
DOWNTOWN	482	2562	4390	3450	1	10885	23.8	21.4
FAIRFIELD	185	562	1240	1073		3060	6.7	6.0
FERNWOOD	248	591	1221	867		2927	6.4	5.7
GONZALES	23	116	307	186		632	1.4	1.2
HARRIS GREEN	191	750	1409	756	1	3107	6.8	6.1
HILLSIDE QUADRA	303	578	1222	731	1	2835	6.2	5.6
JAMES BAY	267	797	1171	873	1	3109	6.8	6.1
NORTH JUBILEE	54	151	251	107		563	1.2	1.1
NORTH PARK	223	872	2424	2025	2	5546	12.1	10.9
OAKLANDS	146	418	903	506	1	1974	4.3	3.9
ROCKLAND	42	104	220	133		499	1.1	1.0
SOUTH JUBILEE	50	217	520	256	1	1044	2.3	2.1
VIC WEST	219	492	1124	647		2482	5.4	4.9
UNKNOWN	4	14	118	78		214	0.5	0.4
VICTORIA TOTAL	2993	9911	19281	13497	15	45697	100.0	89.8
GRAND TOTAL						50910		100.0

TOP 25 CALLS FOR SERVICE BY NEIGHBOURHOOD: January – December, 2010

TYPE OF CALL FOR SERVICE	COLVILLE	DEVONSHIRE	DN1	ESQUIMALT VILLAGE	PANHANDLE	PARKLANDS	ROCKHEIGHTS	SAXE POINT	SELKIRK
THEFT	17	41		61	35	12	58	17	46
UNWANTED PERSON		5		78	5	2	13	12	21
PROPERTY ASSIST	6	7		54	10	3	24	19	20
POLICE/FIRE/AMBULANCE	10	19		77	17	9	22	21	38
CHECK WELLBEING	4	9		72	27	7	25	16	28
DISTURBANCE	8	25		102	15	11	37	25	49
ABANDONED 911	4	20		57	5	6	20	22	27
ASSIST GENERAL PUBLIC	3	7	1	64	11	8	33	16	21
DOMESTIC IN PROGRESS	10	23	1	55	16	18	37	20	44
SUSPICIOUS PERSON	5	10		26	16	3	14	15	10
OTHER CRIMINAL CODE	2	12		15	15	1	7	1	7
SIPP/DIPP	2	3		24	6		5	5	6
DRUGS		2		14	1	1	5	1	
SHOPLIFTER		1		26					
FIGHT	1	2	1	40	5	3	10	9	3
IMPAIRED	6	9		45	27	4	11	7	16
MISCHIEF	2	13		37	9	4	10	10	13
TRAFFIC INCIDENT	5	5	1	12	20	2	19	3	4
SUSPICIOUS CIRCUMSTANCES	3	5		34	13	4	15	10	10
ALARM		15		15	2	4	6		5
PARKING	5	7	2	35	7	3	10	9	6
BREACH	2	1		19	2	2	5	6	3
ASSAULT	3	8		33	4	1	5	6	10
BREAK AND ENTER	7	6		13	6	4	8	6	8
MVI	8	3		9	9	3	11	3	1
Grand Total	165	368	11	1350	374	166	585	388	514

TOP 25 CALLS FOR SERVICE BY NEIGHBOURHOOD: January - December, 2010

TYPE OF CALL FOR SERVICE	WEST BAY	BURNSIDE GORGE	DOWNTOWN	FAIRFIELD	FERNWOOD	GONZALES	HARRIS GREEN	HILLSIDE QUADRA
THEFT	55	547	850	236	247	59	204	217
UNWANTED PERSON	64	394	921	208	216	10	455	115
PROPERTY ASSIST	33	271	852	176	101	25	105	89
POLICE/FIRE/AMBULANCE	85	362	548	140	128	28	213	101
CHECK WELLBEING	70	333	442	169	156	38	257	137
DISTURBANCE	94	199	209	182	233	59	86	169
ABANDONED 911	53	334	387	129	113	28	78	93
ASSIST GENERAL PUBLIC	41	196	266	64	70	27	64	77
DOMESTIC IN PROGRESS	129	232	103	72	131	9	57	169
SUSPICIOUS PERSON	39	194	256	111	113	20	88	110
OTHER CRIMINAL CODE	14	197	468	41	41	3	82	59
SIPP/DIPP	23	130	498	49	38	6	87	38
DRUGS	10	74	289	46	65	7	127	27
SHOPLIFTER	10	109	572	15	2	1	64	24
FIGHT	39	109	468	21	51	3	73	48
IMPAIRED	34	255	167	36	29	11	39	90
MISCHIEF	27	111	182	72	67	12	43	51
TRAFFIC INCIDENT	14	188	161	57	34	6	46	90
SUSPICIOUS CIRCUMSTANCES	29	141	128	60	56	17	62	59
ALARM	12	227	267	52	32	16	54	37
PARKING	10	80	136	99	93	22	39	80
BREACH	12	129	187	184	33	4	45	29
ASSAULT	25	101	255	20	39	6	53	31
BREAK AND ENTER	24	95	60	56	91	17	32	57
MVI	10	155	82	42	37	9	32	70
Grand Total	1292	6820	10885	3060	2927	632	3107	2835

TOP 25 CALLS FOR SERVICE BY NEIGHBOURHOOD: January – December, 2010

TYPE OF CALL FOR SERVICE	JAMES BAY	NORTH JUBILEE	NORTH PARK	OAKLANDS	ROCKLAND	SOUTH JUBILEE	VIC WEST	UNKNOWN	Grand Total
THEFT	245	26	256	156	40	94	200		3768
UNWANTED PERSON	142	15	390	69	11	71	145		3371
PROPERTY ASSIST	176	19	528	88	18	32	105		2790
POLICE/FIRE/AMBULANCE	197	43	322	84	38	43	113	5	2684
CHECK WELLBEING	152	49	222	110	44	58	133	1	2567
DISTURBANCE	142	23	151	161	30	48	126	1	2188
ABANDONED 911	260	26	79	91	22	48	98		2009
ASSIST GENERAL PUBLIC	100	23	249	63	22	28	75	3	1552
DOMESTIC IN PROGRESS	130	14	72	67	14	8	109	1	1552
SUSPICIOUS PERSON	114	19	117	73	19	36	88		1505
OTHER CRIMINAL CODE	23	4	187	26		5	52		1406
SIPP/DIPP	36	5	111	13	3	28	29		1183
DRUGS	17	4	308	14	5	8	27	7	1075
SHOPLIFTER	61	1	10	41		31	89		1057
FIGHT	32	5	69	25		4	28	3	1055
IMPAIRED	34	15	53	57		16	52	3	1032
MISCHIEF	77	20	82	61	16	13	66	2	1007
TRAFFIC INCIDENT	44	17	102	51	7	7	76	16	1003
SUSPICIOUS CIRCUMSTANCES	84	11	83	49	16	19	67	2	984
ALARM	30	11	35	38	19	19	37		947
PARKING	60	5	107	35	16	9	51		928
BREACH	28		131	12	3	11	17	4	878
ASSAULT	41	8	93	13	6	18	26	3	812
BREAK AND ENTER	70	21	31	54	19	10	37	2	736
MVI	34	12	64	50	2	16	35		711
Grand Total	3109	563	5546	1974	499	1044	2482	232	51325