



## ARCHIVED - Archiving Content

### Archived Content

Information identified as archived is provided for reference, research or recordkeeping purposes. It is not subject to the Government of Canada Web Standards and has not been altered or updated since it was archived. Please contact us to request a format other than those available.

## ARCHIVÉE - Contenu archivé

### Contenu archivé

L'information dont il est indiqué qu'elle est archivée est fournie à des fins de référence, de recherche ou de tenue de documents. Elle n'est pas assujettie aux normes Web du gouvernement du Canada et elle n'a pas été modifiée ou mise à jour depuis son archivage. Pour obtenir cette information dans un autre format, veuillez communiquer avec nous.

This document is archival in nature and is intended for those who wish to consult archival documents made available from the collection of Public Safety Canada.

Some of these documents are available in only one official language. Translation, to be provided by Public Safety Canada, is available upon request.

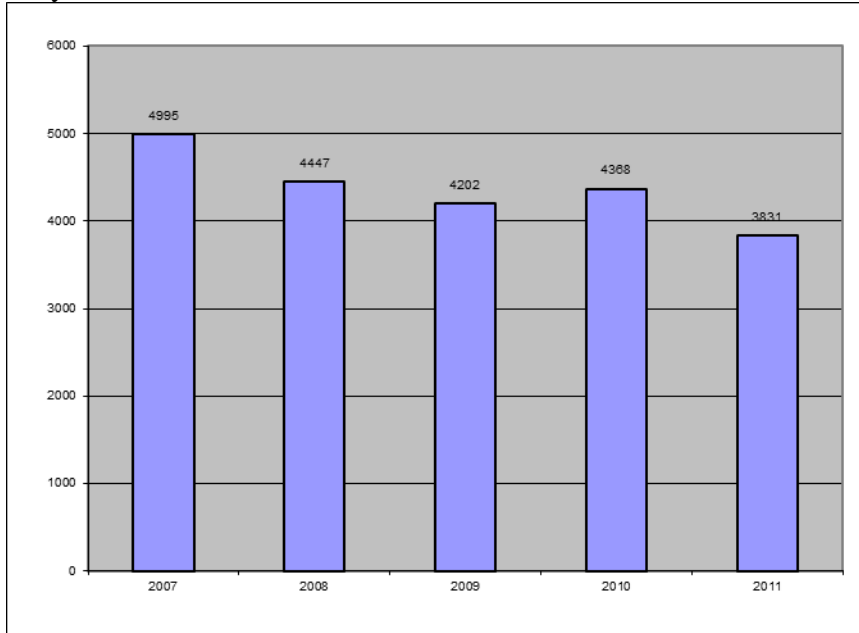
Le présent document a une valeur archivistique et fait partie des documents d'archives rendus disponibles par Sécurité publique Canada à ceux qui souhaitent consulter ces documents issus de sa collection.

Certains de ces documents ne sont disponibles que dans une langue officielle. Sécurité publique Canada fournira une traduction sur demande.

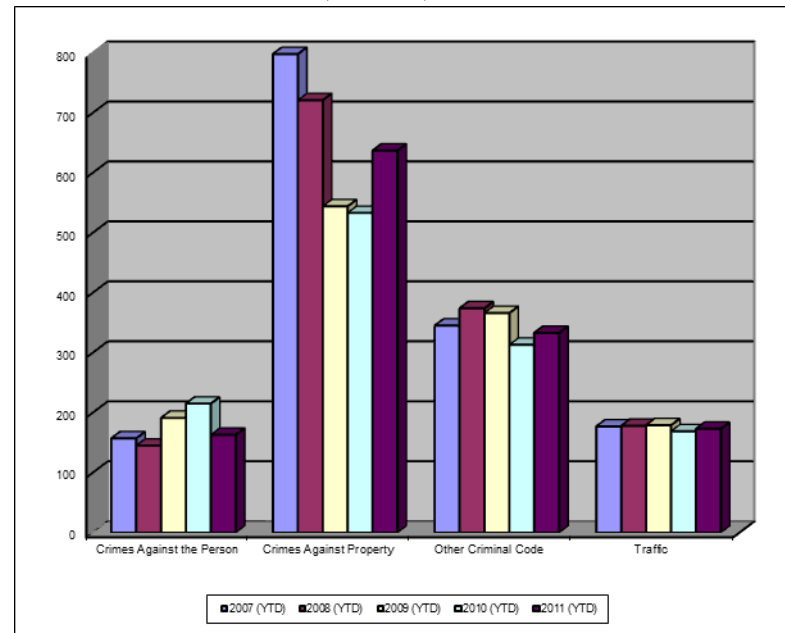


## Crime Trends for Victoria and Esquimalt 2007 – 2011 <sup>(1,2)</sup> January

**Key Crime Trends**



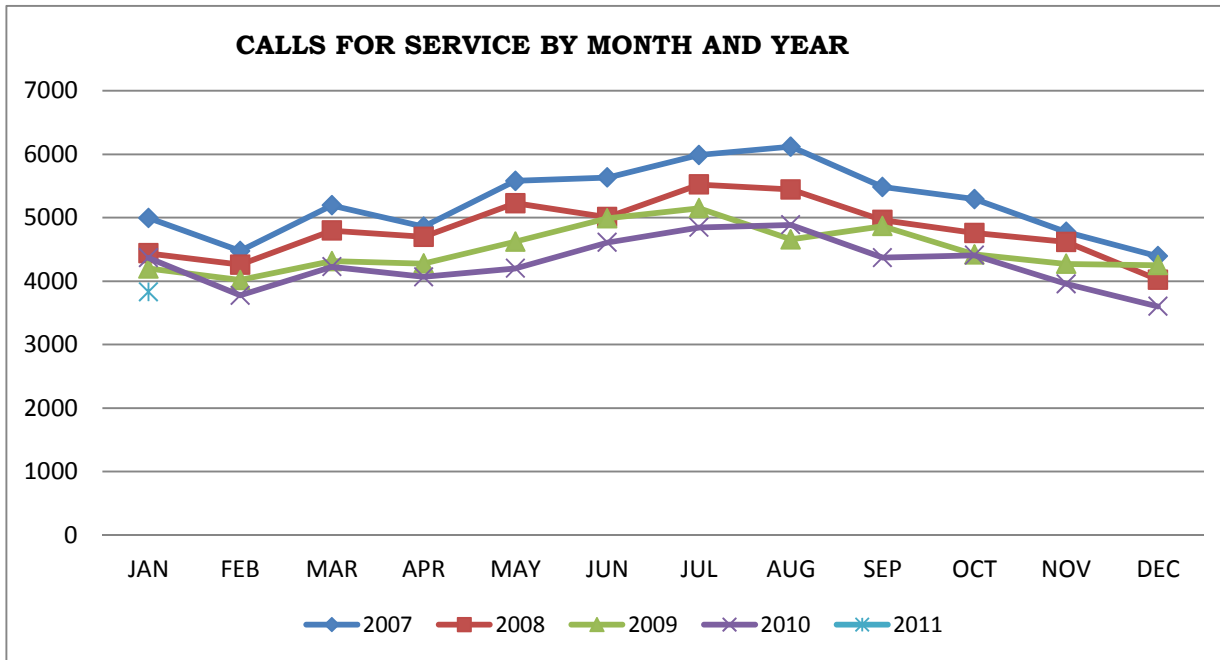
**Total Calls for Service (Annual)**



**Notes**

1. The data presented are taken from the Police Records Information Management Environment (PRIME) database. Data are coded and analyzed according to the requirements of the violation coding structure for Uniform Crime Reporting (UCR) survey as set up by Statistics Canada.
2. The crime statistics published in this report are accurate on the day that they were analyzed. Due to ongoing police investigation and internal data quality control efforts, this information is subject to change, including addition, deletion and reclassification of any and all data. Rates and percentages have been rounded.
3. As provided by the City of Victoria, the 2006 and 2007 population was 94,897; for 2008 – 2010 population is 95,499..
4. The % change is based on the actual values and are subject to (2).

**CALLS FOR SERVICE BY MONTH AND YEAR**



### Key Crime Trends (January – January)

	2007		2008		2009		2010		2011		% Change 2010 - 2011(4)
	Jan-Jan	Rate(3)	Jan-Jan	Rate(3)	Jan-Jan	Rate(3)	Jan-Jan	Rate(3)	Jan-Jan	Rate(3)	
Crimes Against the Person	157	165.4	145	152.8	191	200.0	215	225.1	163	170.7	-24.2
Crimes Against Property	798	840.9	721	759.8	544	569.6	533	558.1	637	667.0	19.5
Other Criminal Code of Canada Offences	345	363.6	374	394.1	366	383.3	313	327.8	333	348.7	6.4
Total CCC Offences Excluding Traffic	1300	1369.9	1240	1306.7	1101	1152.9	1061	1111.0	1133	1186.4	6.8
Traffic Offences	177	186.5	178	187.6	179	187.4	169	177.0	173	181.2	2.4
Total CCC Offences and Traffic	1477	1556.4	1418	1494.3	1280	1340.3	1230	1288.0	1306	1367.6	6.2

### Crimes Against Person (January – January)

	2007		2008		2009		2010		2011		% Change 2010 - 2011(4)
	Jan-Jan	Rate(3)	Jan-Jan	Rate(3)	Jan-Jan	Rate(3)	Jan-Jan	Rate(3)	Jan-Jan	Rate(3)	
Homicide	0	0.0	0	-	0	0.0	1	1.0	0	0.0	-100.0
Attempted Murder	0	0.0	0	-	0	0.0	0	0.0	0	0.0	-
Robbery/Extortion	12	12.6	16	16.9	15	15.7	20	20.9	14	14.7	-30.0
Assault	103	108.5	83	87.5	135	141.4	136	142.4	105	109.9	-22.8
Sexual Assault	8	8.4	8	8.4	7	7.3	15	15.7	10	10.5	-33.3
Criminal Harassment	4	4.2	2	2.1	2	2.1	11	11.5	8	8.4	-27.3
Uttering Threats	27	28.5	36	37.9	32	33.5	32	33.5	26	27.2	-18.8
Arson - Disregard for Life	1	1.1	0	0.0	0	0.0	0	0.0	0	0.0	-

**Crimes Against Property (January – January)**

	2007		2008		2009		2010		2011		% Change 2010 - 2011(4)
	Jan-Jan	Rate(3)	Jan-Jan	Rate(3)	Jan-Jan	Rate(3)	Jan-Jan	Rate(3)	Jan-Jan	Rate(3)	
<b>B&amp;E Business</b>	56	59.0	42	44.3	24	25.1	18	18.8	18	18.8	0.0
<b>B&amp;E-Other</b>	32	33.7	27	28.5	17	17.8	17	17.8	5	5.2	-70.6
<b>B&amp;E-Residence</b>	94	99.1	58	61.1	31	32.5	42	44.0	37	38.7	-11.9
<b>Fraud/Counterfeit Currency</b>	61	64.3	75	79.0	39	40.8	38	39.8	50	52.4	31.6
<b>Possession of Stolen Property/Break and Enter Tools</b>	31	32.7	22	23.2	22	23.0	10	10.5	4	4.2	-60.0
<b>Theft Over \$5000</b>	0	0.0	5	5.3	2	2.1	3	3.1	1	1.0	-66.7
<b>Theft Under \$5000</b>	143	150.7	112	118.0	104	108.9	84	88.0	89	93.2	6.0
<b>Theft from Motor Vehicle</b>	219	230.8	220	231.8	156	163.4	179	187.4	318	333.0	77.7
<b>Theft of Motor Vehicle</b>	55	58.0	29	30.6	34	35.6	25	26.2	22	23.0	-12.0
<b>Take Vehicle without Consent</b>	2	2.1	1	1.1	2	2.1	1	1.0	1	1.0	0.0
<b>Theft of Bicycle</b>	16	16.9	33	34.8	21	22.0	18	18.8	17	17.8	-5.6
<b>Shoplifting</b>	85	89.6	95	100.1	89	93.2	97	101.6	73	76.4	-24.7
<b>Arson</b>	4	4.2	2	2.1	3	3.1	1	1.0	2	2.1	100.0

**Other Criminal Code Offences (January – January)**

	2007		2008		2009		2010		2011		% Change 2010 - 2011(4)
	Jan-Jan	Rate(3)	Jan-Jan	Rate(3)	Jan-Jan	Rate(3)	Jan-Jan	Rate(3)	Jan-Jan	Rate(3)	
<b>Bail Violations/Breach of Probation</b>	35	36.9	31	32.7	24	25.1	25	26.2	5	5.2	-80.0
<b>Domestic Dispute</b>	71	74.8	67	70.6	63	66.0	75	78.5	89	93.2	18.7
<b>Drugs</b>	64	67.4	81	85.4	59	61.8	55	57.6	63	66.0	14.5
<b>Indecent Acts</b>	5	5.3	3	3.2	6	6.3	4	4.2	4	4.2	0.0
<b>Mischief</b>	123	129.6	173	182.3	193	202.1	144	150.8	153	160.2	6.3
<b>Offensive Weapons</b>	21	22.1	19	20.0	21	22.0	10	10.5	18	18.8	80.0

### Traffic Offences (January – January)

	2007		2008		2009		2010		2011		% Change 2010 - 2011(4)
	Jan-Jan	Rate(3)	Jan-Jan	Rate(3)	Jan-Jan	Rate(3)	Jan-Jan	Rate(3)	Jan-Jan	Rate(3)	
Traffic - Collisions	80	84.3	74	78.0	67	70.2	78	81.7	76	79.6	-2.6
Traffic - Fatal	0	0.0	0	0.0	0	0.0	0	0.0	0	0.0	-
Traffic - Other	34	35.8	32	33.7	44	46.1	36	37.7	57	59.7	58.3
Dangerous Operation of Motor Vehicle	3	3.2	7	7.4	7	7.3	0	0.0	0	0.0	-
Fail to Remain	20	21.1	29	30.6	27	28.3	22	23.0	8	8.4	-63.6
Impaired/Refuse	34	35.8	36	37.9	34	35.6	33	34.6	32	33.5	-3.0

### Calls for Service (January – January)

	2007				2008				2009				2010				2011				% Change 2009 - 2010(4)
	Vic	% of Total	Esq	% of Total	Vic	% of Total	Esq	% of Total	Vic	% of Total	Esq	% of Total	Vic	% of Total	Esq	% of Total	Vic	% of Total	Esq	% of Total	
Priority 1	184.0	81.4	42.0	18.6	194.0	87.0	29.0	13.0	221.0	86.0	36.0	14.0	256.0	80.5	62.0	19.5	240.0	83.0	49.0	17.0	-9.1
Priority 2	662.0	91.6	61.0	8.4	704.0	89.5	83.0	10.5	754.0	89.5	88.0	10.5	827.0	87.8	115.0	12.2	660.0	86.3	105.0	13.7	-18.8
Priority 3	2258.0	91.3	215.0	8.7	1666.0	90.9	167.0	9.1	1696.0	90.0	188.0	10.0	1640.0	90.2	179.0	9.8	1412.0	90.9	142.0	9.1	-14.6
Priority 4	1418.0	92.8	110.0	7.2	1390.0	91.8	124.0	8.2	1095.0	91.0	108.0	9.0	1178.0	93.0	89.0	7.0	1014.0	87.8	141.0	12.2	-8.8
Other Alternative	5.0	100.0	0.0	0.0	4.0	100.0	0.0	0.0	2.0	100.0	0.0	0.0	0.0	-	0.0	-	1.0	100.0	0.0	0.0	-
Total - All Priorities	4527.0	91.4	428.0	8.6	3958.0	90.8	403.0	9.2	3768.0	90.0	420.0	10.0	3901.0	89.8	445.0	10.2	3327.0	88.4	437.0	11.6	-13.4

**Calls for Service by Priority and Neighbourhood: January – January, 2011**

Neighbourhood	priority 1	priority 2	Priority 3	Priority 4	Other	Total	% of Total City	% of Grand Total
COLVILLE	1	3	3	10	1	17	3.9	0.5
DEVONSHIRE	7	7	13	15		42	9.6	1.1
DN1		1	1			2	0.5	0.1
ESQUIMALT VILLAGE	12	33	33	35		113	25.7	3.0
PANHANDLE	2	6	9	16		33	7.5	0.9
PARKLANDS	1	3	6	5		15	3.4	0.4
ROCKHEIGHTS	2	12	13	20		47	10.7	1.2
SAXE POINT	4	6	12	14		36	8.2	1.0
WEST BAY	1	11	16	7		35	8.0	0.9
SELKIRK	20	24	36	19		99	22.6	2.6
TANK FARM	0	0	0	0	0	0	0.0	0.0
ESQUIMALT TOTAL	50	106	142	141		439	100.0	11.7
BURNSIDE GORGE	52	142	236	171		601	18.1	16.0
DOWNTOWN	34	142	305	224		705	21.2	18.7
FAIRFIELD	23	32	101	77		233	7.0	6.2
FERNWOOD	18	45	86	76		225	6.8	6.0
GONZALES	1	2	22	10		35	1.1	0.9
HARRIS GREEN	12	55	116	48		231	7.0	6.1
HILLSIDE QUADRA	17	44	85	65		211	6.4	5.6
JAMES BAY	18	53	88	63		222	6.7	5.9
NORTH JUBILEE	8	9	10	6		33	1.0	0.9
NORTH PARK	17	57	174	143		391	11.8	10.4
OAKLANDS	16	30	72	52		170	5.1	4.5
ROCKLAND	4	8	9	17		38	1.1	1.0
SOUTH JUBILEE	3	15	45	20		83	2.5	2.2
VIC WEST	16	25	63	38		142	4.3	3.8
UNKNOWN				2		2	0.1	0.1
VICTORIA TOTAL	239	659	1412	1012		3322	100.0	88.3
GRAND TOTAL						3761		100.0

**TOP 25 CALLS FOR SERVICE BY NEIGHBOURHOOD: January – January, 2011**

TYPE OF CALL FOR SERVICE	COLVILLE	DEVONSHIRE	DN1	ESQUIMALT VILLAGE	PANHANDLE	PARKLANDS	ROCKHEIGHTS	SAXE POINT	SELKIRK
THEFT	4	7		13	9	1	8	8	1
UNWANTED PERSON		1		9	1				4
ASSIST POLICE/FIRE/AMBULANCE			1	6	2		3	3	4
CHECK WELLBEING	2			3		1	1	1	4
PROPERTY DISTURBANCE	1	1		6	2		4	1	1
ASSIST GENERAL PUBLIC		1		6		1	3	3	3
SUSPICIOUS PERSON		2		2		1	3		2
DOMESTIC IN PROGRESS	1	3		5	1		1	1	
ABANDONED 911		2		9			1		1
MISCHIEF	4			7	2		3	4	1
PARKING	1	1		3	1	1	2		1
TRAFFIC INCIDENT	1			2			1	1	1
OTHER CRIMINAL CODE			1		1		1		
FIGHT	1			5	2			1	
DRUGS		1		1			1		
SIPP/DIPP				2					
IMPAIRED				3	1		3		1
SHOPLIFTER									
ALARM								1	
SUSPICIOUS CIRCUMSTANCES	1	3		1	1	1			
ASSIST OTHER AGENCY		2		2					1
ASSAULT						1			
MVI				1	2		1		
INTELLIGENCE INFORMATION				2	1				
<b>Grand Total</b>	<b>17</b>	<b>42</b>	<b>2</b>	<b>113</b>	<b>33</b>	<b>15</b>	<b>47</b>	<b>36</b>	<b>35</b>



**TOP 25 CALLS FOR SERVICE BY NEIGHBOURHOOD: January – January, 2011**

TYPE OF CALL FOR SERVICE	WEST BAY	BURNSIDE GORGE	DOWNTOWN	FAIRFIELD	FERNWOOD	GONZALES	HARRIS GREEN	HILLSIDE QUADRA
THEFT	4	59	38	42	27	2	11	33
UNWANTED PERSON	8	44	70	13	14	1	29	12
ASSIST POLICE/FIRE/AMBULANCE	5	35	28	9	10		15	12
CHECK WELLBEING	2	30	30	15	10	3	14	10
PROPERTY	2	11	58	6		1	8	7
DISTURBANCE	3	22	25	16	12	6	9	6
ASSIST GENERAL PUBLIC	2	18	27	7	8		10	5
SUSPICIOUS PERSON	3	21	21	14	4	2	10	8
DOMESTIC IN PROGRESS	13	26	6	12	9		3	9
ABANDONED 911	2	26	15	13	4	2	3	6
MISCHIEF	1	14	7	7	12	5	4	8
PARKING	1	6	24	11	11		3	3
TRAFFIC INCIDENT		16	18	2	8		5	5
OTHER CRIMINAL CODE	3	11	23	3			9	4
FIGHT	1	16	30		4		4	6
DRUGS	1	10	24	2	8		7	1
SIPP/DIPP	1	11	32		3		8	1
IMPAIRED	2	15	11	1	4		4	7
SHOPLIFTER	1	13	29	2	1		6	2
ALARM	2	11	17	1	6	3	8	3
SUSPICIOUS CIRCUMSTANCES	6	7	3	4	6	2	3	
ASSIST OTHER AGENCY		8	6	4	2		5	2
ASSAULT	3	6	15	3	3	1	2	4
MVI	3	11	2	1	1		7	10
INTELLIGENCE INFORMATION	4	13	4	2				4
<b>Grand Total</b>	<b>96</b>	<b>601</b>	<b>705</b>	<b>233</b>	<b>225</b>	<b>35</b>	<b>231</b>	<b>211</b>

**TOP 25 CALLS FOR SERVICE BY NEIGHBOURHOOD: January – January, 2011**

TYPE OF CALL FOR SERVICE	JAMES BAY	NORTH JUBILEE	NORTH PARK	OAKLANDS	ROCKLAND	SOUTH JUBILEE	VIC WEST	UNKNOWN	Grand Total
THEFT	30	2	27	28	8	13	16	2	393
UNWANTED PERSON	11	3	24	7	1	8	3		263
ASSIST POLICE/FIRE/AMBULANCE	18	1	24	5	3	1	5	1	191
CHECK WELLBEING	15	3	10	9	2	2	7		174
PROPERTY DISTURBANCE	11	2	33	6	2	1	6	3	173
ASSIST GENERAL PUBLIC	15	1	6	17	2	1	9		156
SUSPICIOUS PERSON	15		24	7		5	5	1	151
DOMESTIC IN PROGRESS	6	1	12	7	2	4	4		129
ABANDONED 911	9	6	4	8	1		7		125
MISCHIEF	15		5	5	1	5	4		120
PARKING	5	1	7	4	4	2	7		109
TRAFFIC INCIDENT	5		7	2	1	1		5	91
OTHER CRIMINAL CODE	6		7	4		1	4	8	90
FIGHT	1		18				2	7	84
DRUGS	1		5	1	1		2	2	82
SIPP/DIPP			16			1	1		74
IMPAIRED	1		6	3		1	1	3	74
SHOPLIFTER	4		2	4		1	5		68
ALARM	2			2		4	4		66
SUSPICIOUS CIRCUMSTANCES	2			2			6		62
ASSIST OTHER AGENCY	3	1	6	5		2	4	1	60
ASSAULT	1		19	2		3	1		58
MVI	4	1	8	1		4	1		57
INTELLIGENCE INFORMATION	1	1	5	5		1	1		53
Grand Total	3		13		1		1	1	49
	222	33	391	170	38	83	142	42	3802