



ARCHIVED - Archiving Content

Archived Content

Information identified as archived is provided for reference, research or recordkeeping purposes. It is not subject to the Government of Canada Web Standards and has not been altered or updated since it was archived. Please contact us to request a format other than those available.

ARCHIVÉE - Contenu archivé

Contenu archivé

L'information dont il est indiqué qu'elle est archivée est fournie à des fins de référence, de recherche ou de tenue de documents. Elle n'est pas assujettie aux normes Web du gouvernement du Canada et elle n'a pas été modifiée ou mise à jour depuis son archivage. Pour obtenir cette information dans un autre format, veuillez communiquer avec nous.

This document is archival in nature and is intended for those who wish to consult archival documents made available from the collection of Public Safety Canada.

Some of these documents are available in only one official language. Translation, to be provided by Public Safety Canada, is available upon request.

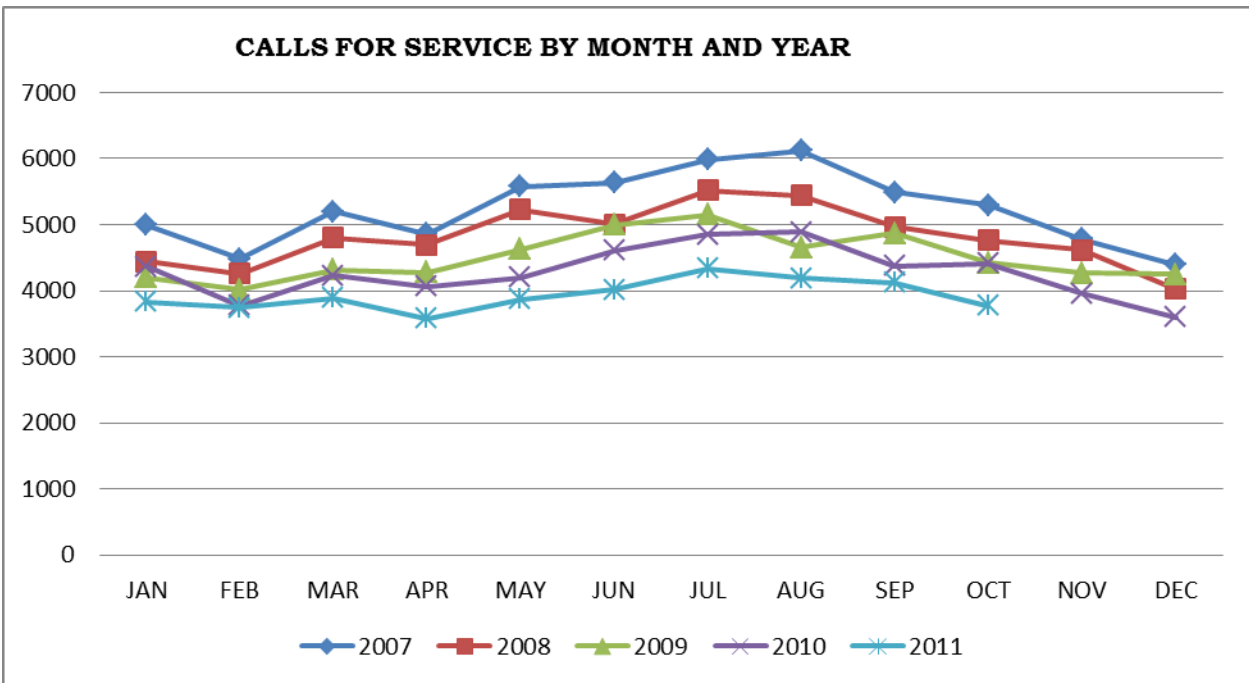
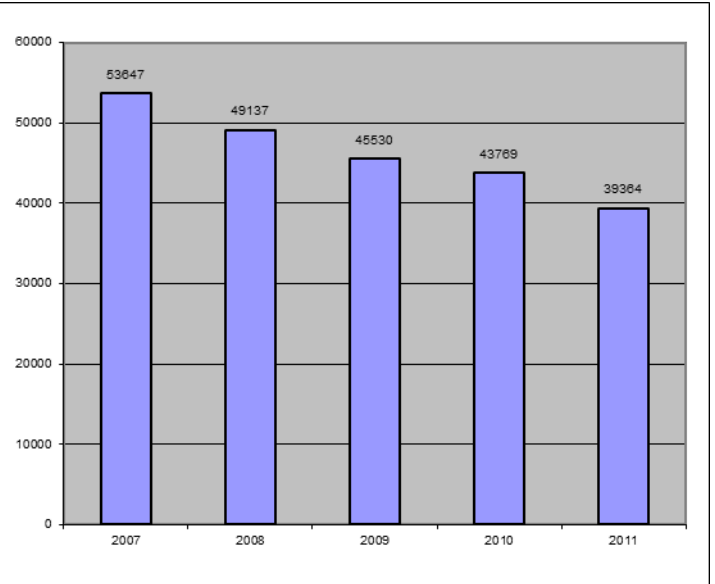
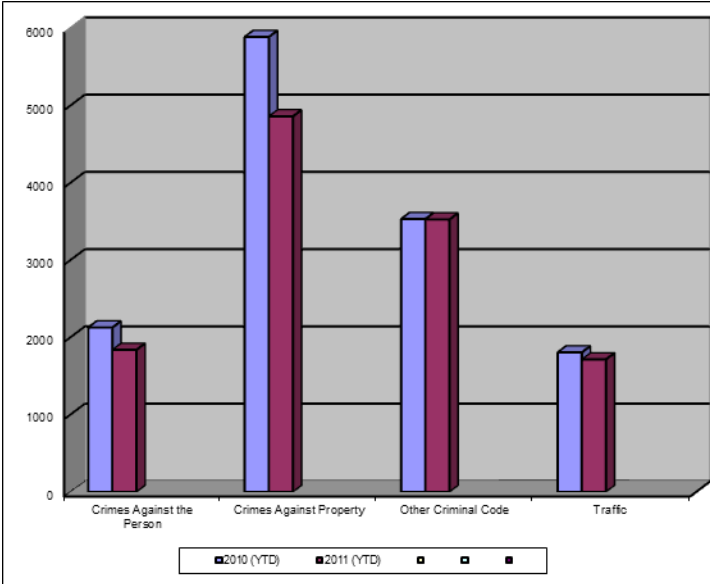
Le présent document a une valeur archivistique et fait partie des documents d'archives rendus disponibles par Sécurité publique Canada à ceux qui souhaitent consulter ces documents issus de sa collection.

Certains de ces documents ne sont disponibles que dans une langue officielle. Sécurité publique Canada fournira une traduction sur demande.

Crime Trends for Victoria and Esquimalt : January to October 31, 2010 – 2011 (1,2)

Key Crime Trends

Total Calls for Service (Annual)



Key Crime Trends (YTD- January – October 31)

	2010		2011		% Change 2010 - 2011(4)
	Jan-Oct	Rate(3)	Jan-Oct	Rate(3)	
Crime Against the Person	2127	2227.2	1839	1925.7	-13.5
Crimes Against Property	5888	6165.5	4860	5089.1	-17.5
Other Criminal Code of Canada Offenses	3531	3697.4	3525	3691.1	-0.2
Total CCC Offences Excluding Traffic	11546	12090.2	10224	10705.9	-11.4
Traffic Offences	1805	1890.1	1714	1794.8	-5.0
Total CCC Offences and Traffic	13351	13980.3	11938	12500.7	-10.6

Crimes Against Person (YTD January – October 31)

	2010		2011		% Change 2010 - 2011(4)
	Jan-Oct	Rate(3)	Jan-Oct	Rate(3)	
Homicide	1	1.0	2	0.0	-
Attempted Murder	1	1.0	2	2.1	-
Robbery/Extortion	196	205.2	150	157.1	-23.5
Assault	1356	1419.9	1143	1196.9	-15.7
Sexual Assault	106	111.0	100	104.7	-5.7
Criminal Harassment	72	75.4	73	76.4	1.4
Uttering Threats	396	414.7	370	387.4	-6.6
Arson - Disregard for Life	0	0.0	2	2.1	-

Notes:

1. The data presented is taken from the Police Records Information Management Environment (PRIME) database. Data that is coded and analyzed according to the requirements of the violation coding structure for Uniform Crime Reporting (UCR) survey as set up by Statistics Canada.
2. The crime statistics published in this report are accurate on the day that they were analyzed. Due to ongoing police investigation and internal data quality control efforts, this information is subject to change, including addition, deletion and reclassification of any and all data. Rates and percentages have been rounded.
3. Rate is calculated on a per 100,000 rate for each month and year. As provided by Capital Region District, the 2010 and 2011 population is estimated at 100,657.
4. The % change is based on the actual values and is subject to (2).

Crimes Against Property (YTD January – October 31)

		2010		2011		% Change 2010 - 2011(4)
		Jan-Oct	Rate(3)	Jan-Oct	Rate(3)	
B&E Business		153	160.2	178	186.4	16.3
B&E-Other		148	155.0	131	137.2	-11.5
B&E-Residence		491	514.1	306	320.4	-37.7
Fraud		579	606.3	346	362.3	-40.2
Possession of Stolen Property/Break and Enter Tools		120	125.7	71	74.3	-40.8
Theft Over \$5000		23	24.1	17	17.8	-26.1
Theft Under \$5000		1011	1058.6	827	866.0	-18.2
Theft from Motor Vehicle		1716	1796.9	1670	1748.7	-2.7
Theft of Motor Vehicle		269	281.7	160	167.5	-40.5
Take Vehicle without Consent		21	22.0	9	9.4	-57.1
Theft of Bicycle		311	325.7	287	300.5	-7.7
Shoplifting		1022	1070.2	838	877.5	-18.0
Arson		24	25.1	19	19.9	-20.8

Other Criminal Code Offences (YTD January – October 31)

		2010		2011		% Change 2010 - 2011(4)
		Jan-Oct	Rate(3)	Jan-Oct	Rate(3)	
Bail Violations/Breach of Probation		593	620.9	450	471.2	-24.1
Domestic Dispute		711	744.5	727	761.3	2.3
Drugs		762	797.9	810	848.2	6.3
Indecent Acts		57	59.7	93	97.4	63.2
Mischief		1262	1321.5	1282	1342.4	1.6
Offensive Weapons		146	152.9	163	170.7	11.6

Traffic Offences (YTD January – September 30)

		2010		2011		% Change 2010 - 2011(4)
		Jan-Oct	Rate(3)	Jan-Oct	Rate(3)	
Traffic - Collisions		752	787.4	712	745.6	-5.3
Traffic - Fatal		1	1.0	1	1.0	-
Traffic - Other		348	364.4	438	458.6	25.9
Dangerous Operation of Motor Vehicle		70	73.3	17	17.8	-75.7
Fail to Remain		244	255.5	177	185.3	-27.5
Impaired/Refuse		390	408.4	370	387.4	-5.1

Calls for Service (YTD January – October 31)

					2010				2011				% Change 2010 - 2011(4)
					Vic	% of Total	Esq	% of Total	Vic	% of Total	Esq	% of Total	
Priority 1: Emergency, dispatch immediate, high probability of death or grievous bodily harm					2525	82.1	550	17.9	2539	84.1	479	15.9	-1.9
Priority 2: Urgent, dispatch immediate, not life threatening in nature					8458	88.9	1061	11.1	7524	88.6	966	11.4	-10.8
Priority 3: Routine: non-urgent					16311	89.6	1889	10.4	15165	90.5	1594	9.5	-7.9
Priority 4: May or may not be dispatched, dependant on agency					11459	92.2	968	7.8	9936	91.3	946	8.7	-12.4
Other Alternative					13	100.0		0.0	7	77.8	2	22.2	-30.8
Total - All Priorities					38766	89.7	4468	10.3	35171	89.8	3987	10.2	-9.4

**Please Note the above table was calculated according to Municipality – the table below was calculated according to Neighbourhood. As a result the numbers may not correspond.

Calls for Service by Priority and Neighbourhood: January – October 31

Neighbourhood	Priority 1	Priority 2	Priority 3	Priority 4	Other	Total	% of Total City	% of Grand total
COLVILLE	9	36	50	45		140	3.5	0.4
DEVONSHIRE	26	64	100	104		294	7.4	0.7
DN1		2	7	3		12	0.3	0.0
ESQUIMALT VILLAGE	118	293	457	244		1112	27.9	2.8
PANHANDLE	22	57	104	60		243	6.1	0.6
PARKLANDS	19	20	51	28		118	3.0	0.3
ROCKHEIGHTS	57	93	173	107	1	431	10.8	1.1
SAXE POINT	41	61	138	85		325	8.1	0.8
SELKIRK	53	113	160	79	1	406	10.2	1.0
WEST BAY	134	228	357	192		911	22.8	2.3
TANK FARM	0	0	0	0	0	0	0.0	0.0
ESQUIMALT TOTAL	479	967	1597	947	2	3992	100.0	10.1
BURNSIDE GORGE	522	1526	2656	1379		6083	17.3	15.5
DOWNTOWN	384	1648	3140	2384		7556	21.5	19.2
FAIRFIELD	229	458	942	634	1	2264	6.4	5.8
FERNWOOD	173	509	1059	687		2428	6.9	6.2
GONZALES	30	69	287	125	1	512	1.5	1.3
HARRIS GREEN	169	592	1175	594	2	2532	7.2	6.4
HILLSIDE QUADRA	224	461	910	569	1	2165	6.2	5.5
JAMES BAY	203	567	904	662		2336	6.6	5.9
NORTH JUBILEE	66	108	160	101		435	1.2	1.1
NORTH PARK	189	614	1931	1399		4133	11.8	10.5
OAKLANDS	134	287	697	520	1	1639	4.7	4.2
ROCKLAND	27	71	145	134	1	378	1.1	1.0
SOUTH JUBILEE	53	262	384	243		942	2.7	2.4
VIC WEST	136	353	773	499		1761	5.0	4.5
UNKNOWN			2	2		4	0.0	0.0
VICTORIA TOTAL	2539	7525	15166	9932	7	35169	100.0	89.3
GRAND TOTAL	3042	8556	16844	10913	9	39364		100.0