



ARCHIVED - Archiving Content

Archived Content

Information identified as archived is provided for reference, research or recordkeeping purposes. It is not subject to the Government of Canada Web Standards and has not been altered or updated since it was archived. Please contact us to request a format other than those available.

ARCHIVÉE - Contenu archivé

Contenu archivé

L'information dont il est indiqué qu'elle est archivée est fournie à des fins de référence, de recherche ou de tenue de documents. Elle n'est pas assujettie aux normes Web du gouvernement du Canada et elle n'a pas été modifiée ou mise à jour depuis son archivage. Pour obtenir cette information dans un autre format, veuillez communiquer avec nous.

This document is archival in nature and is intended for those who wish to consult archival documents made available from the collection of Public Safety Canada.

Some of these documents are available in only one official language. Translation, to be provided by Public Safety Canada, is available upon request.

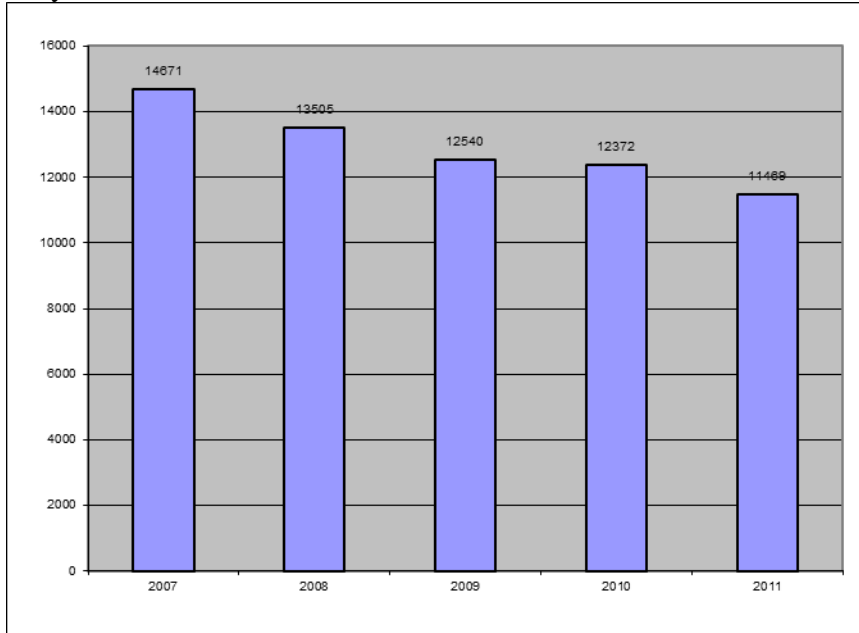
Le présent document a une valeur archivistique et fait partie des documents d'archives rendus disponibles par Sécurité publique Canada à ceux qui souhaitent consulter ces documents issus de sa collection.

Certains de ces documents ne sont disponibles que dans une langue officielle. Sécurité publique Canada fournira une traduction sur demande.

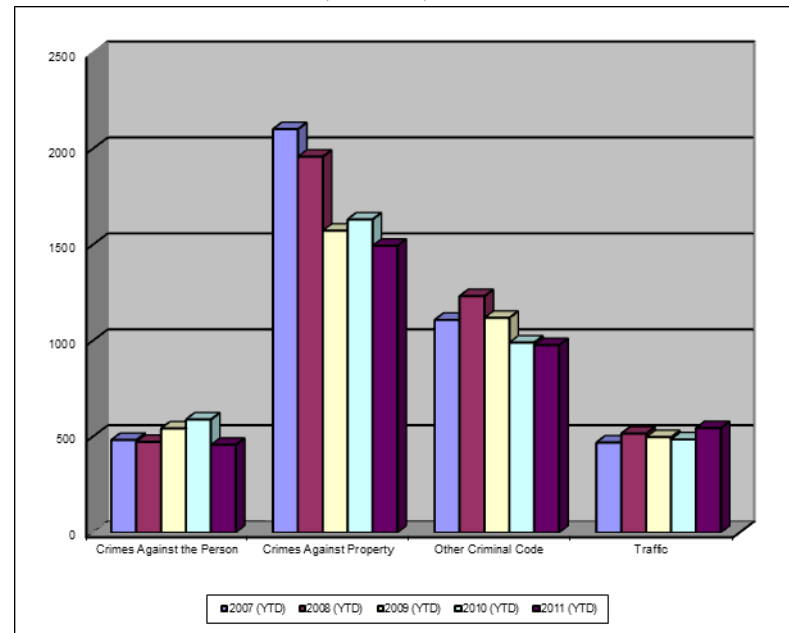


Crime Trends for Victoria and Esquimalt 2007 – 2011 ^(1,2) January - March

Key Crime Trends



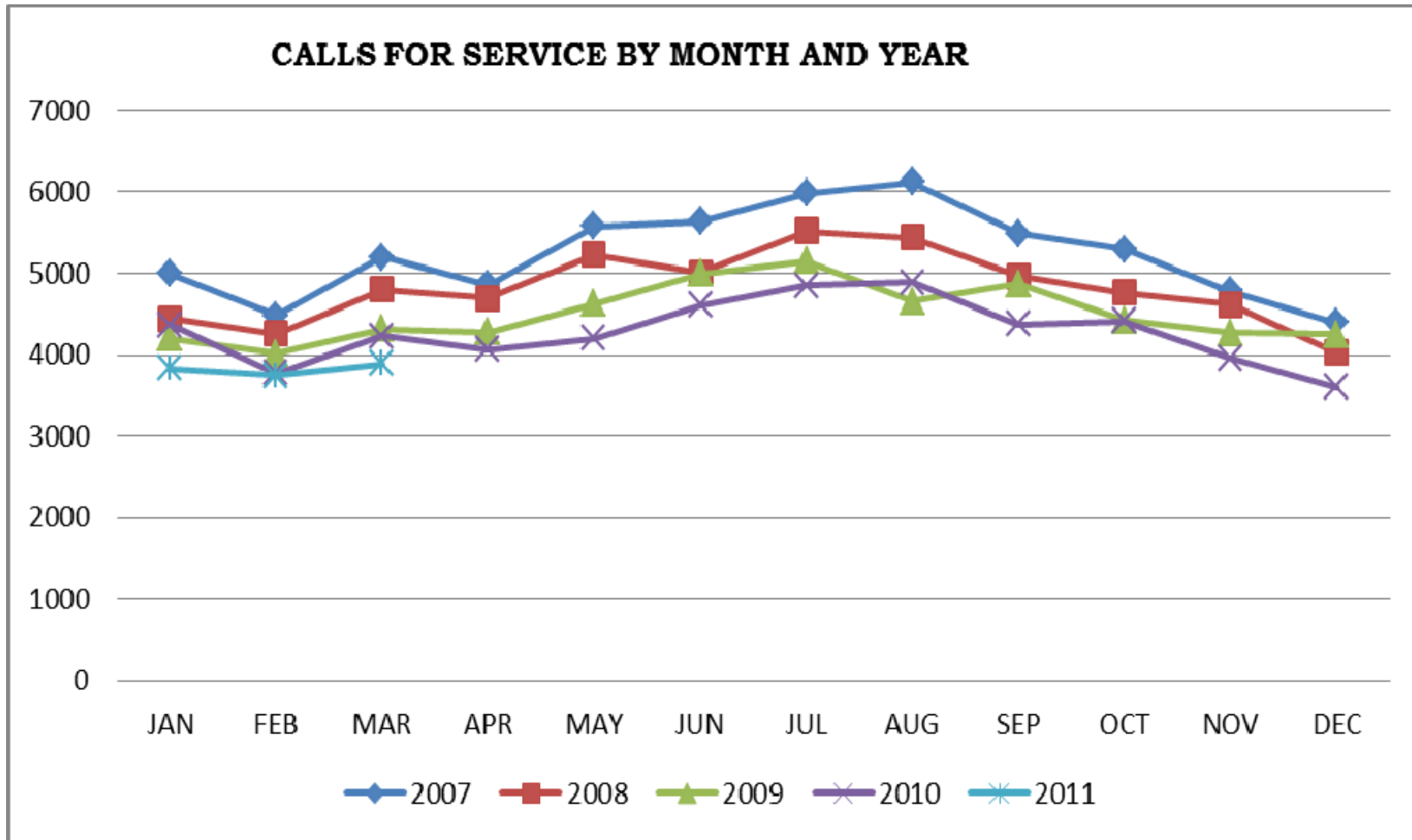
Total Calls for Service (Annual)



Notes

1. The data presented are taken from the Police Records Information Management Environment (PRIME) database. Data are coded and analyzed according to the requirements of the violation coding structure for Uniform Crime Reporting (UCR) survey as set up by Statistics Canada.
2. The crime statistics published in this report are accurate on the day that they were analyzed. Due to ongoing police investigation and internal data quality control efforts, this information is subject to change, including addition, deletion and reclassification of any and all data. Rates and percentages have been rounded.
3. As provided by the City of Victoria, the 2006 and 2007 population was 94,897; for 2008 – 2011 population is 95,499..
4. The % change is based on the actual values and are subject to (2).

CALLS FOR SERVICE BY MONTH AND YEAR



Key Crime Trends (January – March)

	2007		2008		2009		2010		2011		% Change 2010 - 2011(4)
	Jan-Mar	Rate(3)	Jan-Mar	Rate(3)	Jan-Mar	Rate(3)	Jan-Mar	Rate(3)	Jan-Mar	Rate(3)	
Crimes Against the Person	482	507.9	472	497.4	542	567.5	589	616.8	457	478.5	-22.4
Crimes Against Property	2102	2215.0	1959	2064.3	1573	1647.1	1632	1708.9	1495	1565.5	-8.4
Other Criminal Code of Canada Offences	1108	1167.6	1232	1298.2	1119	1171.7	990	1036.7	977	1023.0	-1.3
Total CCC Offences Excluding Traffic	3692	3890.5	3663	3860.0	3234	3386.4	3211	3362.3	2929	3067.0	-8.8
Traffic Offences	469	494.2	516	543.7	497	520.4	485	507.9	544	569.6	12.2
Total CCC Offences and Traffic	4161	4384.8	4179	4403.7	3731	3906.8	3696	3870.2	3473	3636.7	-6.0

Crime Against Persons (January – March)

	2007		2008		2009		2010		2011		% Change 2010 - 2011(4)
	Jan-Mar	Rate(3)	Jan-Mar	Rate(3)	Jan-Mar	Rate(3)	Jan-Mar	Rate(3)	Jan-Mar	Rate(3)	
Homicide	0	0.0	0	-	1	1.0	1	1.0	0	0.0	-100.0
Attempted Murder	0	0.0	0	-	0	0.0	0	0.0	0	0.0	-
Robbery/Extortion	41	43.2	59	62.2	47	49.2	56	58.6	38	39.8	-32.1
Assault	321	338.3	282	297.2	375	392.7	364	381.2	291	304.7	-20.1
Sexual Assault	22	23.2	24	25.3	16	16.8	33	34.6	28	29.3	-15.2
Criminal Harassment	14	14.8	13	13.7	10	10.5	26	27.2	28	29.3	7.7
Uttering Threats	82	86.4	92	96.9	93	97.4	109	114.1	71	74.3	-34.9
Arson - Disregard for Life	2	2.1	2	2.1	0	0.0	0	0.0	1	1.0	-

Crime Against Property (January – March)

	2007		2008		2009		2010		2011		% Change 2010 - 2011(4)
	Jan-Mar	Rate(3)	Jan-Mar	Rate(3)	Jan-Mar	Rate(3)	Jan-Mar	Rate(3)	Jan-Mar	Rate(3)	
B&E Business	147	154.9	113	119.1	53	55.5	52	54.5	42	44.0	-19.2
B&E-Other	60	63.2	60	63.2	43	45.0	49	51.3	22	23.0	-55.1
B&E-Residence	204	215.0	181	190.7	70	73.3	129	135.1	96	100.5	-25.6
Fraud/Counterfeit Currency	193	203.4	171	180.2	124	129.8	164	171.7	100	104.7	-39.0
Possession of Stolen Property/Break and Enter Tools	86	90.6	61	64.3	54	56.5	36	37.7	25	26.2	-30.6
Theft Over \$5000	4	4.2	8	8.4	8	8.4	8	8.4	6	6.3	-25.0
Theft Under \$5000	361	380.4	298	314.0	298	312.0	242	253.4	203	212.6	-16.1
Theft from Motor Vehicle	560	590.1	635	669.1	471	493.2	506	529.8	697	729.9	37.7
Theft of Motor Vehicle	142	149.6	72	75.9	76	79.6	75	78.5	45	47.1	-40.0
Take Vehicle without Consent	9	9.5	12	12.6	8	8.4	4	4.2	2	2.1	-50.0
Theft of Bicycle	67	70.6	94	99.1	73	76.4	55	57.6	48	50.3	-12.7
Shoplifting	259	272.9	245	258.2	289	302.6	305	319.4	205	214.7	-32.8
Arson	10	10.5	9	9.5	6	6.3	7	7.3	3	3.1	-57.1

Other Criminal Code Offences (January – March)

	2007		2008		2009		2010		2011		% Change 2010 - 2011(4)
	Jan-Mar	Rate(3)	Jan-Mar	Rate(3)	Jan-Mar	Rate(3)	Jan-Mar	Rate(3)	Jan-Mar	Rate(3)	
Bail Violations/Breach of Probation	203	213.9	193	203.4	141	147.6	156	163.4	95	99.5	-39.1
Domestic Dispute	226	238.2	205	216.0	194	203.1	245	256.5	229	239.8	-6.5
Drugs	209	220.2	231	243.4	192	201.0	144	150.8	220	230.4	52.8
Indecent Acts	16	16.9	15	15.8	19	19.9	12	12.6	18	18.8	50.0
Mischief	393	414.1	534	562.7	520	544.5	397	415.7	379	396.9	-4.5
Offensive Weapons	61	64.3	54	56.9	53	55.5	36	37.7	36	37.7	0.0

Traffic Offences (January – March)

	2007		2008		2009		2010		2011		% Change 2010 - 2011(4)
	Jan-Mar	Rate(3)	Jan-Mar	Rate(3)	Jan-Mar	Rate(3)	Jan-Mar	Rate(3)	Jan-Mar	Rate(3)	
Traffic - Collisions	195	205.5	197	207.6	188	196.9	205	214.7	241	252.4	17.6
Traffic - Fatal	0	0.0	0	0.0	0	0.0	1	1.0	0	0.0	-
Traffic - Other	94	99.1	108	113.8	94	98.4	105	109.9	189	197.9	80.0
Dangerous Operation of Motor Vehicle	9	9.5	23	24.2	35	36.6	20	20.9	4	4.2	-80.0
Fail to Remain	88	92.7	83	87.5	76	79.6	57	59.7	23	24.1	-59.6
Impaired/Refuse	83	87.5	105	110.6	104	108.9	97	101.6	87	91.1	-10.3

Calls for Service (January – March)

	2007				2008				2009				2010				2011				% Change 2009 - 2010(4)
	Vic	% of Total	Esq	% of Total	Vic	% of Total	Esq	% of Total	Vic	% of Total	Esq	% of Total	Vic	% of Total	Esq	% of Total	Vic	% of Total	Esq	% of Total	
Priority 1	537.0	82.5	114.0	17.5	594.0	85.2	103.0	14.8	658.0	86.1	106.0	13.9	731.0	82.3	157.0	17.7	734.0	83.0	150.0	17.0	0.2
Priority 2	2054.0	88.5	267.0	11.5	2319.0	90.2	252.0	9.8	2292.0	89.9	258.0	10.1	2470.0	89.5	291.0	10.5	2085.0	86.8	316.0	13.2	-12.1
Priority 3	6288.0	90.0	699.0	10.0	5173.0	91.3	491.0	8.7	4993.0	91.0	491.0	9.0	4707.0	90.6	491.0	9.4	4364.0	90.2	472.0	9.8	-6.4
Priority 4	4190.0	92.0	365.0	8.0	3982.0	92.2	339.0	7.8	3380.0	91.4	317.0	8.6	3155.0	92.7	250.0	7.3	2910.0	88.8	367.0	11.2	-3.5
Other Alternative	13.0	100.0	0.0	0.0	28.0	93.3	2.0	6.7	13.0	92.9	1.0	7.1	1.0	100.0	0.0	0.0	1.0	50.0	1.0	50.0	-
Total - All Priorities	13082.0	90.1	1445.0	9.9	12096.0	91.1	1187.0	8.9	11336.0	90.6	1173.0	9.4	11064.0	90.3	1189.0	9.7	10094.0	88.5	1306.0	11.5	-6.4

Calls for Service by Priority and Neighbourhood: March, 2011

Neighbourhood	priority 1	priority 2	Priority 3	Priority 4	Other	Total	% of Total City	% of Grand Total
COLVILLE	3	9	16	19		47	3.6	0.4
DEVONSHIRE	11	18	31	50		110	8.4	1.0
DN1		2	4	1		7	0.5	0.1
ESQUIMALT VILLAGE	44	111	134	76		365	27.9	3.2
PANHANDLE	3	14	31	22		70	5.4	0.6
PARKLANDS	4	8	15	15		42	3.2	0.4
ROCKHEIGHTS	13	23	44	47		127	9.7	1.1
SAXE POINT	7	13	46	39		105	8.0	0.9
WEST BAY	16	30	33	31	1	111	8.5	1.0
SELKIRK	49	88	118	68		323	24.7	2.8
TANK FARM	0	0	0	0	0	0	0.0	0.0
ESQUIMALT TOTAL	150	316	472	368	1	1307	100.0	11.5
BURNSIDE GORGE	154	429	783	433		1799	17.8	15.8
DOWNTOWN	115	441	876	658		2090	20.7	18.3
FAIRFIELD	49	124	251	194		618	6.1	5.4
FERNWOOD	52	138	244	188		622	6.2	5.5
GONZALES	6	27	91	27		151	1.5	1.3
HARRIS GREEN	53	169	315	173		710	7.0	6.2
HILLSIDE QUADRA	54	133	256	185	1	629	6.2	5.5
JAMES BAY	53	137	242	165		597	5.9	5.2
NORTH JUBILEE	22	34	40	20		116	1.1	1.0
NORTH PARK	62	185	696	415		1358	13.4	11.9
OAKLANDS	45	99	222	172		538	5.3	4.7
ROCKLAND	8	22	42	41		113	1.1	1.0
SOUTH JUBILEE	15	62	112	82		271	2.7	2.4
VIC WEST	46	86	194	156		482	4.8	4.2
UNKNOWN		2	1	2		5	0.0	0.0
VICTORIA TOTAL	734	2088	4365	2911	1	10099	100.0	88.5
GRAND TOTAL						11406		100.0