



ARCHIVED - Archiving Content

Archived Content

Information identified as archived is provided for reference, research or recordkeeping purposes. It is not subject to the Government of Canada Web Standards and has not been altered or updated since it was archived. Please contact us to request a format other than those available.

ARCHIVÉE - Contenu archivé

Contenu archivé

L'information dont il est indiqué qu'elle est archivée est fournie à des fins de référence, de recherche ou de tenue de documents. Elle n'est pas assujettie aux normes Web du gouvernement du Canada et elle n'a pas été modifiée ou mise à jour depuis son archivage. Pour obtenir cette information dans un autre format, veuillez communiquer avec nous.

This document is archival in nature and is intended for those who wish to consult archival documents made available from the collection of Public Safety Canada.

Some of these documents are available in only one official language. Translation, to be provided by Public Safety Canada, is available upon request.

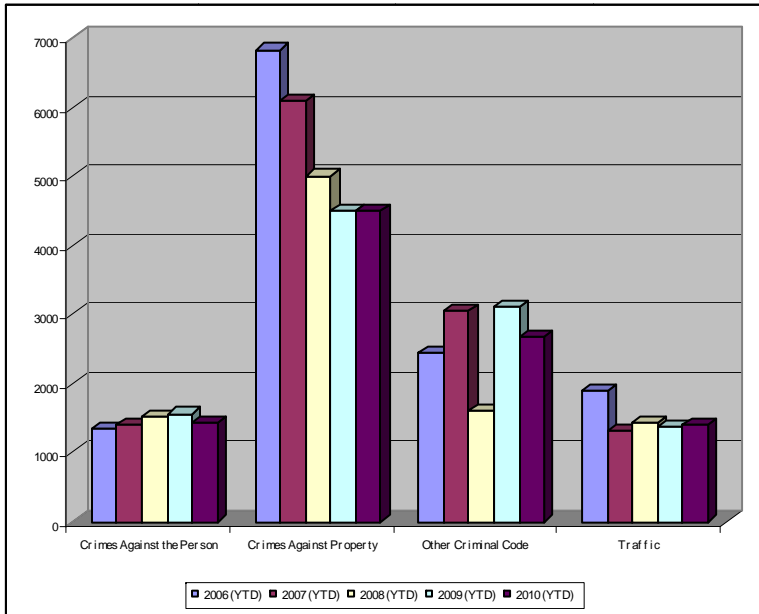
Le présent document a une valeur archivistique et fait partie des documents d'archives rendus disponibles par Sécurité publique Canada à ceux qui souhaitent consulter ces documents issus de sa collection.

Certains de ces documents ne sont disponibles que dans une langue officielle. Sécurité publique Canada fournira une traduction sur demande.

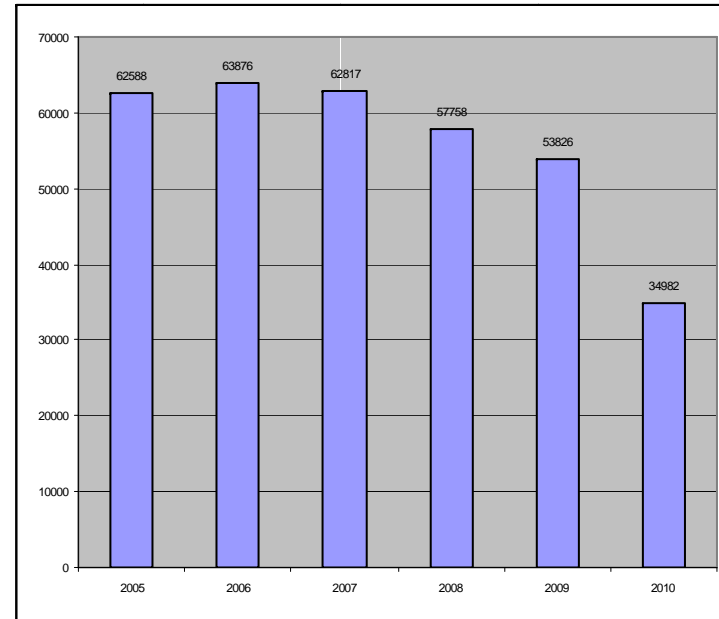


Crime Trends for Victoria and Esquimalt 2006 – 2010 ^(1,2) January to August

Key Crime Trends



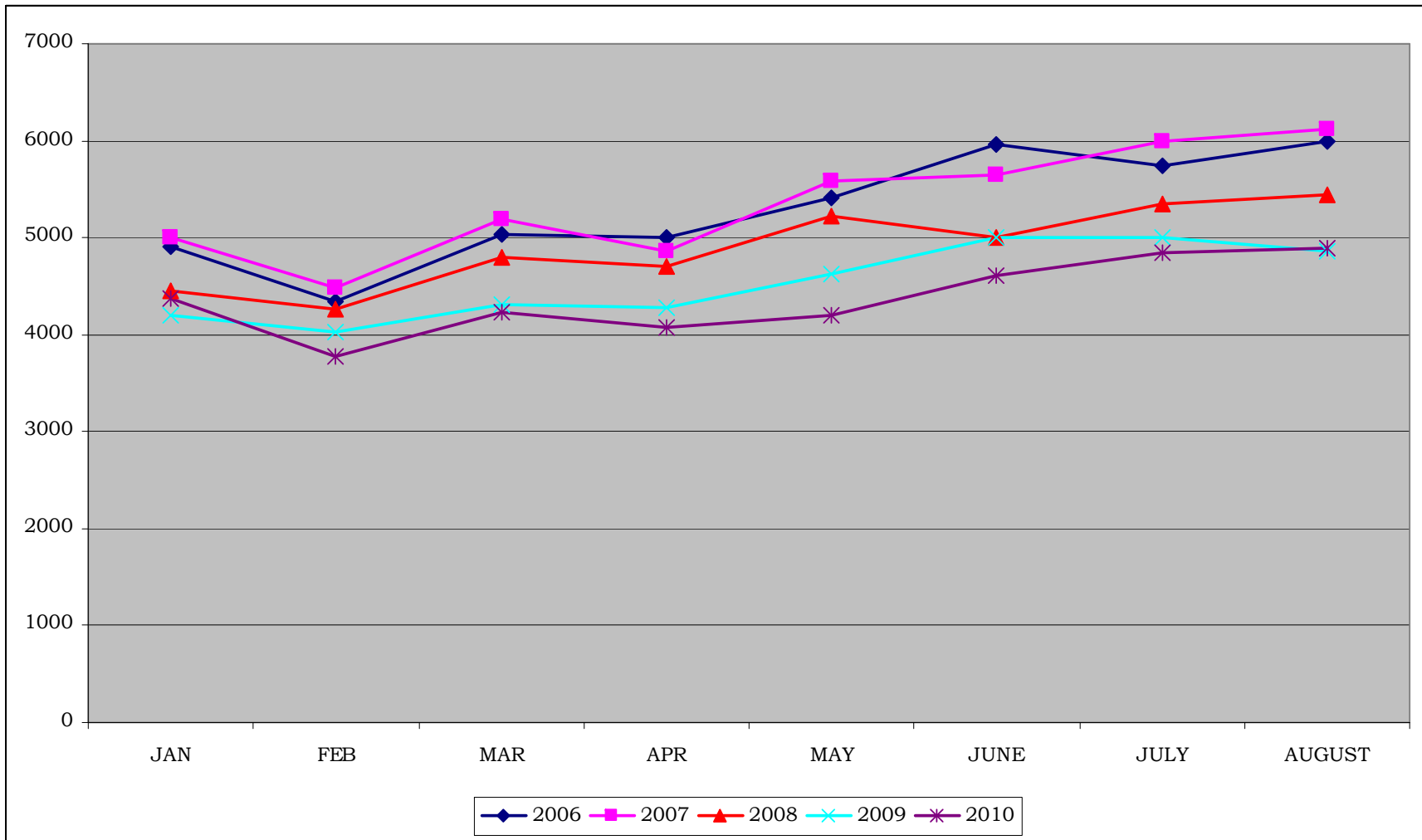
Total Calls for Service (Annual)



Notes

1. The data presented are taken from the Police Records Information Management Environment (PRIME) database. Data are coded and analyzed according to the requirements of the violation coding structure for Uniform Crime Reporting (UCR) survey as set up by Statistics Canada.
2. The crime statistics published in this report are accurate on the day that they were analyzed. Due to ongoing police investigation and internal data quality control efforts, this information is subject to change, including addition, deletion and reclassification of any and all data. Rates and percentages have been rounded.
3. As provided by the City of Victoria, the 2006 and 2007 population was 94,897; for 2008 – 2010 population is 95,499..
4. The % change is based on the actual values and are subject to (2).

CALLS FOR SERVICE BY MONTH AND YEAR



Key Crime Trends (January – August)

	2006		2007		2008		2009		2010		% Change 2009 - 2010(4)
	Jan-Aug	Rate(3)	Jan-Aug	Rate(3)	Jan-Aug	Rate(3)	Jan-Aug	Rate(3)	Jan-Aug	Rate(3)	
Crimes Against the Person	1349	1421.5	1412	1487.9	1519	1590.6	1558	1631.4	1431	1498.4	-8.2
Crimes Against Property	6825	7192.0	6094	6421.7	5005	5240.9	4488	4699.5	4488	4699.5	0.0
Other Criminal Code of Canada Offences	2454	2586.0	3060	3224.5	3473	3636.7	3104	3250.3	2675	2801.1	-13.8
Total CCC Offences Excluding Traffic	10628	11199.5	10566	11134.2	9997	10468.2	9150	9581.3	8594	8999.0	-6.1
Traffic Offences	1904	2006.4	1315	1385.7	1435	1502.6	1380	1445.0	1405	1471.2	1.8
Total CCC Offences and Traffic	12532	13205.9	11881	12519.9	11432	11970.8	10530	11026.3	9999	10470.3	-5.0

Crimes Against Person (January – August)

	2006		2007		2008		2009		2010		% Change 2009 - 2010(4)
	Jan-Aug	Rate(3)	Jan-Aug	Rate(3)	Jan-Aug	Rate(3)	Jan-Aug	Rate(3)	Jan-Aug	Rate(3)	
Homicide	2	2.1	0	0.0	1	1.0	0	0.0	1	1.0	-
Attempted Murder	1	1.1	0	0.0	1	1.0	1	1.0	1	1.0	0.0
Robbery/Extortion	116	122.2	189	199.2	135	141.4	135	141.4	145	151.8	7.4
Assault	862	908.4	878	925.2	980	1026.2	1057	1106.8	914	957.1	-13.5
Sexual Assault	81	85.4	77	81.1	73	76.4	65	68.1	90	94.2	38.5
Criminal Harassment	48	50.6	23	24.2	49	51.3	44	46.1	53	55.5	20.5
Uttering Threats	232	244.5	242	255.0	276	289.0	252	263.9	227	237.7	-9.9
Arson - Disregard for Life	7	7.4	3	3.2	4	4.2	2	2.1	0	0.0	-100.0

Crimes Against Property (January – August)

	2006		2007		2008		2009		2010		% Change 2009 - 2010(4)
	Jan-Aug	Rate(3)	Jan-Aug	Rate(3)	Jan-Aug	Rate(3)	Jan-Aug	Rate(3)	Jan-Aug	Rate(3)	
B&E Business	398	419.4	331	348.8	241	252.4	126	131.9	122	127.8	-3.2
B&E-Other	354	373.0	147	154.9	145	151.8	105	109.9	99	103.7	-5.7
B&E-Residence	396	417.3	473	498.4	508	531.9	261	273.3	320	335.1	22.6
Fraud/Counterfeit Currency	488	514.2	508	535.3	392	410.5	356	372.8	409	428.3	14.9
Possession of Stolen Property/Break and Enter Tools	200	210.8	230	242.4	154	161.3	146	152.9	93	97.4	-36.3
Theft Over \$5000	22	23.2	18	19.0	21	22.0	26	27.2	16	16.8	-38.5
Theft Under \$5000	1082	1140.2	1054	1110.7	848	888.0	878	919.4	741	775.9	-15.6
Theft from Motor Vehicle	2216	2335.2	1797	1893.6	1355	1418.9	1238	1296.3	1402	1468.1	13.2
Theft of Motor Vehicle	466	491.1	405	426.8	308	322.5	282	295.3	228	238.7	-19.1
Take Vehicle without Consent	18	19.0	23	24.2	34	35.6	14	14.7	13	13.6	-7.1
Theft of Bicycle	450	474.2	350	368.8	323	338.2	266	278.5	228	238.7	-14.3
Shoplifting	716	754.5	734	773.5	647	677.5	765	801.1	797	834.6	4.2
Arson	19	20.0	24	25.3	29	30.4	25	26.2	18	18.8	-28.0

Other Criminal Code Offences (January – August)

	2006		2007		2008		2009		2010		% Change 2009 - 2010(4)
	Jan-Aug	Rate(3)	Jan-Aug	Rate(3)	Jan-Aug	Rate(3)	Jan-Aug	Rate(3)	Jan-Aug	Rate(3)	
Bail Violations/Breach of Probation	590	621.7	563	593.3	476	498.4	491	514.1	473	495.3	-3.7
Domestic Dispute	634	668.1	524	552.2	624	653.4	623	652.4	654	684.8	5.0
Drugs	461	485.8	600	632.3	650	680.6	507	530.9	439	459.7	-13.4
Indecent Acts	35	36.9	45	47.4	30	31.4	58	60.7	36	37.7	-37.9
Mischief	1172	1235.0	1167	1229.8	1550	1623.1	1290	1350.8	972	1017.8	-24.7
Offensive Weapons	144	151.7	161	169.7	143	149.7	135	141.4	101	105.8	-25.2

Traffic Offences (January – August)

	2006		2007		2008		2009		2010		% Change 2009 - 2010(4)
	Jan-Aug	Rate(3)	Jan-Aug	Rate(3)	Jan-Aug	Rate(3)	Jan-Aug	Rate(3)	Jan-Aug	Rate(3)	
Traffic - Collisions	813	856.7	563	593.3	559	585.3	555	581.2	543	568.6	-2.2
Traffic - Fatal	1	1.1	0	0.0	0	0.0	0	0.0	0	0.0	-
Traffic - Other	594	625.9	304	320.3	292	305.8	260	272.3	515	539.3	98.1
Dangerous Operation of Motor Vehicle	11	11.6	19	20.0	64	67.0	75	78.5	22	23.0	-70.7
Fail to Remain	287	302.4	251	264.5	242	253.4	207	216.8	108	113.1	-47.8
Impaired/Refuse	198	208.6	178	187.6	278	291.1	283	296.3	217	227.2	-23.3

Calls for Service (January – August)

	2006				2007.0				2008.0				2009.0				2010.0				% Change 2009 - 2010(4)
	Vic	% of Total	Esq	% of Total	Vic	% of Total	Esq	% of Total	Vic	% of Total	Esq	% of Total	Vic	% of Total	Esq	% of Total	Vic	% of Total	Esq	% of Total	
Priority 1	1526.0	80.6	367.0	19.4	1624.0	84.3	302.0	15.7	1743.0	85.3	301.0	14.7	1980.0	85.7	330.0	14.3	2017.0	82.2	437.0	17.8	6.2
Priority 2	5872.0	87.5	842.0	12.5	6618.0	88.7	841.0	11.3	6684.0	90.2	729.0	9.8	6705.0	89.0	831.0	11.0	6766.0	88.6	872.0	11.4	1.4
Priority 3	18363.0	90.4	1948.0	9.6	16747.0	89.7	1915.0	10.3	15489.0	91.8	1392.0	8.2	14389.0	90.3	1544.0	9.7	12956.0	89.3	1551.0	10.7	-9.0
Priority 4	11752.0	89.9	1327.0	10.1	13233.0	92.1	1142.0	7.9	11443.0	92.6	921.0	7.4	9421.0	91.2	907.0	8.8	9114.0	92.1	778.0	7.9	-4.2
Other Alternative	40.0	85.1	7.0	14.9	49.0	87.5	7.0	12.5	44.0	91.7	4.0	8.3	44.0	95.7	2.0	4.3	8.0	100.0	0.0	0.0	-82.6
Total - All Priorities	37553.0	89.3	4491.0	10.7	38271.0	90.1	4207.0	9.9	35403.0	91.4	3347.0	8.6	32539.0	90.0	3614.0	10.0	30861.0	89.5	3638.0	10.5	-4.6

Calls for Service by Priority and Neighbourhood: January – August, 2010

Neighbourhood	priority 1	priority 2	Priority 3	Priority 4	Other	Total	% of Total City	% of Grand Total
COLVILLE	16	29	39	36		120	3.3	0.3
DEVONSHIRE	30	65	87	63		245	6.7	0.7
DN1		1	2	2		5	0.1	0.0
ESQUIMALT VILLAGE	84	239	404	200		927	25.5	2.7
PANHANDLE	23	60	111	57		251	6.9	0.7
PARKLANDS	13	20	50	20		103	2.8	0.3
ROCKHEIGHTS	50	81	197	105		433	11.9	1.2
SAXE POINT	23	67	126	69		285	7.8	0.8
WEST BAY	154	225	378	140		897	24.7	2.6
SELKIRK	44	84	157	84		369	10.2	1.1
TANK FARM	0	0	0	0		0	0.0	0.0
ESQUIMALT TOTAL	437	871	1551	776		3635	100.0	10.5
BURNSIDE GORGE	357	1139	1747	1182	4	4429	14.3	12.8
DOWNTOWN	316	1763	2951	2363		7393	23.8	21.3
FAIRFIELD	127	397	843	798		2165	7.0	6.2
FERNWOOD	161	398	813	579		1951	6.3	5.6
GONZALES	16	80	223	136		455	1.5	1.3
HARRIS GREEN	136	501	932	492		2061	6.6	5.9
HILLSIDE QUADRA	204	396	814	497		1911	6.2	5.5
JAMES BAY	182	550	841	598		2171	7.0	6.3
NORTH JUBILEE	42	100	182	75		399	1.3	1.2
NORTH PARK	155	602	1686	1367	2	3812	12.3	11.0
OAKLANDS	106	286	614	373	1	1380	4.4	4.0
ROCKLAND	31	71	160	81		343	1.1	1.0
SOUTH JUBILEE	39	146	368	150	1	704	2.3	2.0
VIC WEST	141	335	765	405		1646	5.3	4.7
UNKNOWN	3	14	116	75		208	0.7	0.6
VICTORIA TOTAL	2016	6778	13055	9171	8	31028	100.0	89.5
GRAND TOTAL						34663		100.0

TOP 25 CALLS FOR SERVICE BY NEIGHBOURHOOD: January – August, 2010

TYPE OF CALL FOR SERVICE	COLVILLE	DEVONSHIRE	DN1	ESQUIMALT VILLAGE	PANHANDLE	PARKLANDS	ROCKHEIGHTS	SAXE POINT	SELKIRK
THEFT	11	32		51	23	6	38	14	30
UNWANTED PERSON		2		57	3	1	11	11	14
SUSPICIOUS CIRCUMSTANCES	10	7		42	18	8	24	24	18
PROPERTY	3	5		34	5	2	17	12	14
ASSIST POLICE/FIRE/AMBULANCE	6	13		49	11	5	17	14	25
CHECK WELLBEING	4	6		59	15	6	20	11	24
DISTURBANCE	4	16		71	13	3	29	15	39
ABANDONED 911	3	12		37	4	3	16	17	17
DOMESTIC	10	22		39	12	8	30	13	33
MVI	7	2		23	18	6	18		6
ASSIST GENERAL PUBLIC	3	3		39	9	6	27	10	15
MISCHIEF	6	9		33	9	2	9	12	13
OTHER CRIMINAL CODE		5		11	11	1	4	1	5
SIPP/DIPP	2	2		21	4		4	4	6
ASSAULT	4	8		35	4	1	12	5	10
ALARM		12		14	2	2	5		4
IMPAIRED	4	7		31	18	3	9	5	11
DRUGS				9	1	1	4	1	
FIGHT	1	2		25	2	2	9	5	3
SHOPLIFTER		1		21					
BREAK AND ENTER	6	4		14	6	4	7	10	9
TRAFFIC INCIDENT	3	5		6	14	2	13	3	3
BREACH	2	1		11	2	1	2	4	2
PARKING	5	3	2	26	6	2	9	7	3
THREATS	1	3		22	6		13	8	11
Grand Total	120	245	5	927	251	103	433	285	369

TOP 25 CALLS FOR SERVICE BY NEIGHBOURHOOD: January - August, 2010

TYPE OF CALL FOR SERVICE	WEST BAY	BURNSIDE GORGE	DOWNTOWN	FAIRFIELD	FERNWOOD	GONZALES	HARRIS GREEN	HILLSIDE QUADRA
THEFT	38	408	693	179	187	45	177	152
UNWANTED PERSON	46	233	614	144	130	8	322	70
SUSPICIOUS CIRCUMSTANCES	55	262	273	142	134	29	109	136
PROPERTY	17	174	572	125	73	19	74	57
ASSIST POLICE/FIRE/AMBULANCE	64	232	367	95	85	19	139	69
CHECK WELLBEING	51	225	306	116	109	25	164	85
DISTURBANCE	69	135	131	136	178	45	65	132
ABANDONED 911	37	240	276	97	78	19	47	64
DOMESTIC	97	157	67	56	91	9	41	122
MVI	16	200	138	65	48	10	63	92
ASSIST GENERAL PUBLIC	28	117	169	39	50	22	39	46
MISCHIEF	24	104	186	68	60	12	47	51
OTHER CRIMINAL CODE	9	117	304	25	23	1	45	35
SIPP/DIPP	13	81	331	37	22	6	51	29
ASSAULT	31	89	277	15	33	3	50	35
ALARM	9	173	217	44	31	13	43	30
IMPAIRED	26	182	126	22	17	10	28	61
DRUGS	7	47	196	34	39	6	76	22
FIGHT	28	69	309	17	32	2	46	37
SHOPLIFTER	8	56	409	12	2	1	38	13
BREAK AND ENTER	20	75	52	46	70	13	27	50
TRAFFIC INCIDENT	8	118	90	32	25	5	31	57
BREACH	8	102	115	162	28	3	18	21
PARKING	4	51	101	59	57	9	32	54
THREATS	20	55	62	34	25	7	22	28
Grand Total	897	4429	7393	2165	1951	455	2061	1911

TOP 25 CALLS FOR SERVICE BY NEIGHBOURHOOD: January – August, 2010

TYPE OF CALL FOR SERVICE	JAMES BAY	NORTH JUBILEE	NORTH PARK	OAKLANDS	ROCKLAND	SOUTH JUBILEE	VIC WEST	UNKNOWN	Grand Total
THEFT	219	18	203	126	22	62	115	3	2867
UNWANTED PERSON	113	9	288	49	5	51	102	1	2290
SUSPICIOUS CIRCUMSTANCES	156	24	160	104	23	42	119	2	1936
PROPERTY	117	13	349	65	10	18	80	9	1883
ASSIST POLICE/FIRE/AMBULANCE	127	25	208	64	23	31	78	5	1788
CHECK WELLBEING	111	36	160	68	32	42	100		1780
DISTURBANCE	96	16	105	116	21	38	79	1	1557
ABANDONED 911	184	19	51	51	17	24	67		1389
DOMESTIC	94	12	66	52	7	6	80	1	1131
MVI	55	25	91	62	9	27	56	2	1052
ASSIST GENERAL PUBLIC	77	14	160	46	14	16	54	2	1023
MISCHIEF	46	20	68	58	15	20	58	1	940
OTHER CRIMINAL CODE	14	4	119	12		4	32	89	917
SIPP/DIPP	28	3	80	10	3	17	22	26	813
ASSAULT	38	8	85	12	6	13	20	1	800
ALARM	28	12	29	33	23	18	33		784
IMPAIRED	26	11	40	37		8	39	3	736
DRUGS	14	2	210	10	3	4	19	7	728
FIGHT	26	4	57	20		4	19	3	724
SHOPLIFTER	46	1	7	23		19	62		719
BREAK AND ENTER	64	21	34	55	14	12	26	1	646
TRAFFIC INCIDENT	29	12	68	27	5	5	48	15	637
BREACH	19		89	7	3	8	10	3	631
PARKING	44	4	67	21	8	5	32	1	613
THREATS	26	6	69	23	5	16	16		480
Grand Total	2171	399	3812	1380	343	704	1646	176	34982