



ARCHIVED - Archiving Content

Archived Content

Information identified as archived is provided for reference, research or recordkeeping purposes. It is not subject to the Government of Canada Web Standards and has not been altered or updated since it was archived. Please contact us to request a format other than those available.

ARCHIVÉE - Contenu archivé

Contenu archivé

L'information dont il est indiqué qu'elle est archivée est fournie à des fins de référence, de recherche ou de tenue de documents. Elle n'est pas assujettie aux normes Web du gouvernement du Canada et elle n'a pas été modifiée ou mise à jour depuis son archivage. Pour obtenir cette information dans un autre format, veuillez communiquer avec nous.

This document is archival in nature and is intended for those who wish to consult archival documents made available from the collection of Public Safety Canada.

Some of these documents are available in only one official language. Translation, to be provided by Public Safety Canada, is available upon request.

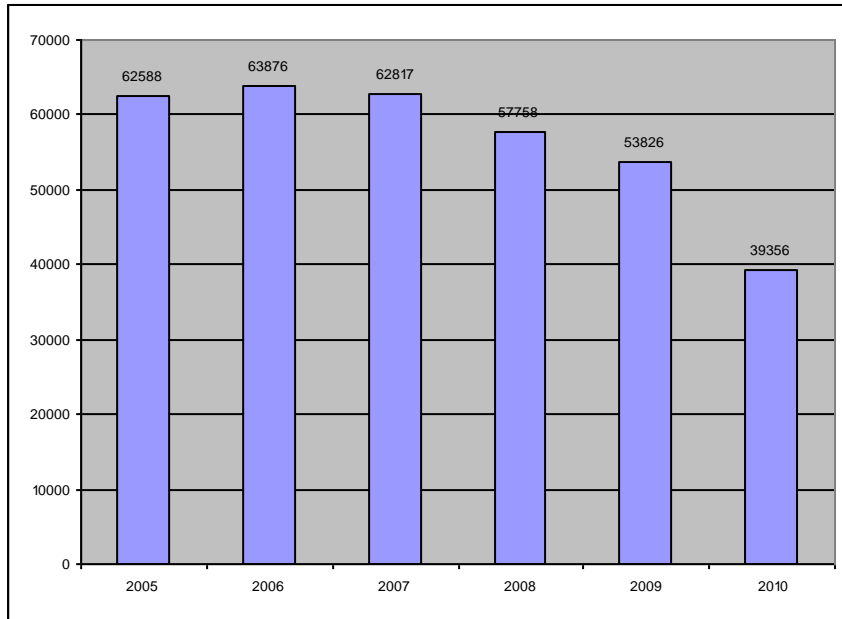
Le présent document a une valeur archivistique et fait partie des documents d'archives rendus disponibles par Sécurité publique Canada à ceux qui souhaitent consulter ces documents issus de sa collection.

Certains de ces documents ne sont disponibles que dans une langue officielle. Sécurité publique Canada fournira une traduction sur demande.

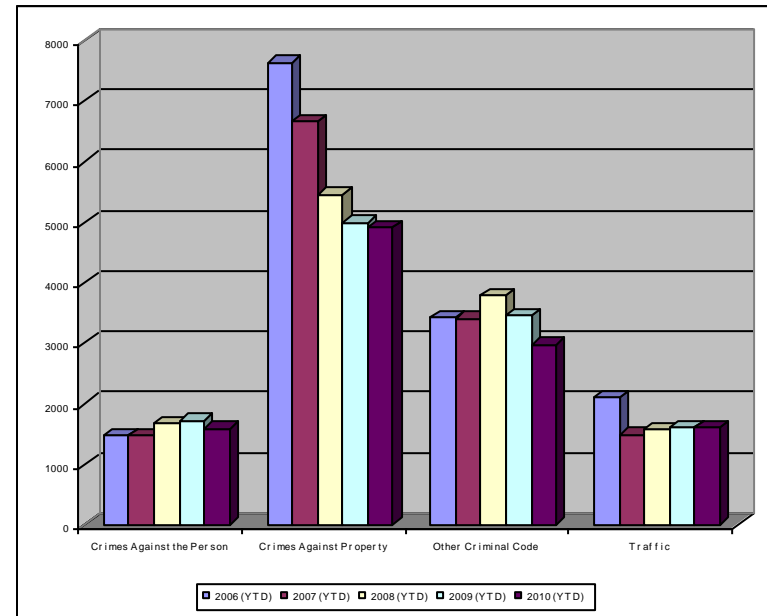


Crime Trends for Victoria and Esquimalt 2006 – 2010 ^(1,2) January to September

Key Crime Trends



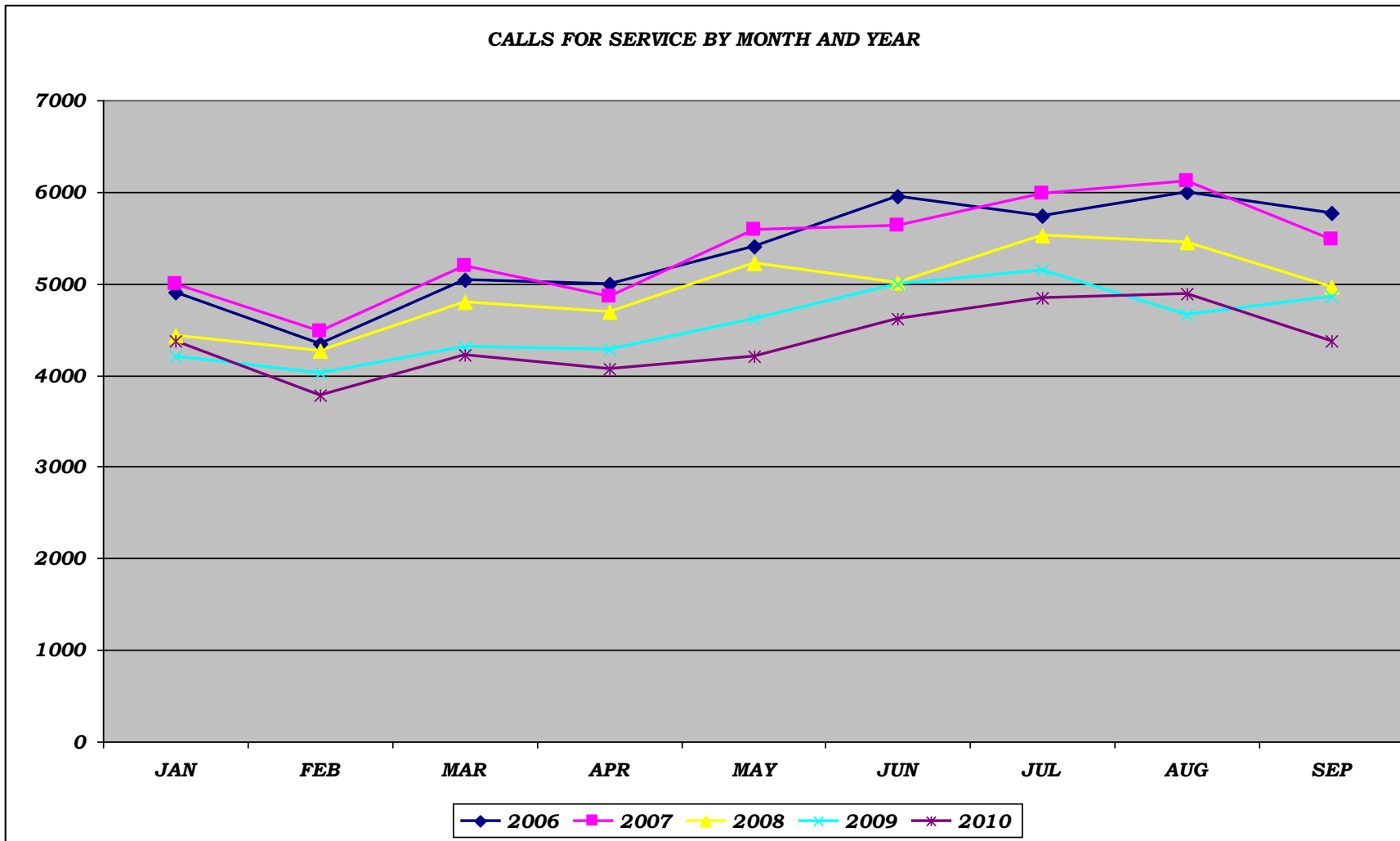
Total Calls for Service (Annual)



Notes

1. The data presented are taken from the Police Records Information Management Environment (PRIME) database. Data are coded and analyzed according to the requirements of the violation coding structure for Uniform Crime Reporting (UCR) survey as set up by Statistics Canada.
2. The crime statistics published in this report are accurate on the day that they were analyzed. Due to ongoing police investigation and internal data quality control efforts, this information is subject to change, including addition, deletion and reclassification of any and all data. Rates and percentages have been rounded.
3. As provided by the City of Victoria, the 2006 and 2007 population was 94,897; for 2008 – 2010 population is 95,499..
4. The % change is based on the actual values and are subject to (2).

CALLS FOR SERVICE BY MONTH AND YEAR



Key Crime Trends (January – September)

	2006		2007		2008		2009		2010		% Change 2009 - 2010(4)
	Jan-Sep	Rate(3)	Jan-Sep	Rate(3)	Jan-Sep	Rate(3)	Jan-Sep	Rate(3)	Jan-Sep	Rate(3)	
Crimes Against the Person	1467	1545.9	1471	1550.1	1665	1743.5	1721	1802.1	1583	1657.6	-8.0
Crimes Against Property	7635	8045.6	6652	7009.7	5455	5712.1	4994	5229.4	4899	5129.9	-1.9
Other Criminal Code of Canada Offences	3425	3609.2	3407	3590.2	3788	3966.5	3448	3610.5	2978	3118.4	-13.6
Total CCC Offences Excluding Traffic	12527	13200.6	11530	12150.0	10908	11422.1	10163	10642.0	9460	9905.9	-6.9
Traffic Offences	2108	2221.4	1486	1565.9	1565	1638.8	1606	1681.7	1592	1667.0	-0.9
Total CCC Offences and Traffic	14635	15422.0	13016	13715.9	12473	13060.9	11769	12323.7	11052	11572.9	-6.1

Crimes Against Person (January – September)

	2006		2007		2008		2009		2010		% Change 2009 - 2010(4)
	Jan-Sep	Rate(3)	Jan-Sep	Rate(3)	Jan-Sep	Rate(3)	Jan-Sep	Rate(3)	Jan-Sep	Rate(3)	
Homicide	3	3.2	-	-	1	1.0	-	-	-	-	-
Attempted Murder	1	1.1	-	-	1	1.0	3	3.1	1	1.0	-66.7
Robbery/Extortion	133	140.2	131	138.0	145	151.8	162	169.6	163	170.7	0.6
Assault	944	994.8	975	1027.4	1090	1141.4	1160	1214.7	1025	1073.3	-11.6
Sexual Assault	77	81.1	64	67.4	65	68.1	59	61.8	88	92.1	49.2
Criminal Harassment	49	51.6	26	27.4	57	59.7	51	53.4	57	59.7	11.8
Uttering Threats	253	266.6	272	286.6	302	316.2	283	296.3	249	260.7	-12.0
Arson - Disregard for Life	7	7.4	3	3.2	4	4.2	3	3.1	-	-	-

Crimes Against Property (January – September)

	2006		2007		2008		2009		2010		% Change 2009 - 2010(4)
	Jan-Sep	Rate(3)	Jan-Sep	Rate(3)	Jan-Sep	Rate(3)	Jan-Sep	Rate(3)	Jan-Sep	Rate(3)	
B&E Business	457	481.6	377	397.3	269	281.7	152	159.2	127	133.0	-16.4
B&E-Other	372	392.0	167	176.0	176	184.3	125	130.9	108	113.1	-13.6
B&E-Residence	419	441.5	513	540.6	514	538.2	293	306.8	366	383.3	24.9
Fraud/Counterfeit Currency	541	570.1	549	578.5	441	461.8	381	399.0	450	471.2	18.1
Possession of Stolen Property/Break and Enter Tools	223	235.0	258	271.9	167	174.9	166	173.8	107	112.0	-35.5
Theft Over \$5000	23	24.2	19	20.0	19	19.9	26	27.2	19	19.9	-26.9
Theft Under \$5000	1178	1241.3	1128	1188.7	932	975.9	967	1012.6	788	825.1	-18.5
Theft from Motor Vehicle	2621	2761.9	1972	2078.0	1482	1551.8	1394	1459.7	1557	1630.4	11.7
Theft of Motor Vehicle	453	477.4	400	421.5	280	293.2	263	275.4	201	210.5	-23.6
Take Vehicle without Consent	20	21.1	27	28.5	31	32.5	17	17.8	13	13.6	-23.5
Theft of Bicycle	504	531.1	396	417.3	369	386.4	314	328.8	265	277.5	-15.6
Shoplifting	798	840.9	814	857.8	741	775.9	872	913.1	878	919.4	0.7
Arson	26	27.4	32	33.7	34	35.6	24	25.1	20	20.9	-16.7

Other Criminal Code Offences (January – September)

	2006		2007		2008		2009		2010		% Change 2009 - 2010(4)
	Jan-Sep	Rate(3)	Jan-Sep	Rate(3)	Jan-Sep	Rate(3)	Jan-Sep	Rate(3)	Jan-Sep	Rate(3)	
Bail Violations/Breach of Probation	675	711.3	622	655.4	503	526.7	524	548.7	508	531.9	-3.1
Domestic Dispute	719	757.7	585	616.5	710	743.5	699	731.9	731	765.5	4.6
Drugs	525	553.2	685	721.8	709	742.4	558	584.3	563	589.5	0.9
Indecent Acts	40	42.2	47	49.5	33	34.6	54	56.5	39	40.8	-27.8
Mischief	1307	1377.3	1303	1373.1	1681	1760.2	1471	1540.3	1042	1091.1	-29.2
Offensive Weapons	159	167.6	165	173.9	152	159.2	142	148.7	95	99.5	-33.1

Traffic Offences (January – September)

	2006		2007		2008		2009		2010		% Change 2009 - 2010(4)
	Jan-Sep	Rate(3)	Jan-Sep	Rate(3)	Jan-Sep	Rate(3)	Jan-Sep	Rate(3)	Jan-Sep	Rate(3)	
Traffic - Collisions	905	953.7	644	678.6	626	655.5	653	683.8	620	649.2	-5.1
Traffic - Fatal	1	1.1	1	1.1	0	0.0	1	1.0	1	1.0	0.0
Traffic - Other	647	681.8	342	360.4	314	328.8	336	351.8	591	618.9	75.9
Dangerous Operation of Motor Vehicle	15	15.8	21	22.1	69	72.3	79	82.7	25	26.2	-68.4
Fail to Remain	312	328.8	285	300.3	269	281.7	221	231.4	116	121.5	-47.5
Impaired/Refuse	228	240.3	193	203.4	287	300.5	316	330.9	239	250.3	-24.4

Calls for Service (January – September)

	2006				2007.0				2008.0				2009.0				2010.0				% Change 2009 - 2010(4)
	Vic	% of Total	Esq	% of Total	Vic	% of Total	Esq	% of Total	Vic	% of Total	Esq	% of Total	Vic	% of Total	Esq	% of Total	Vic	% of Total	Esq	% of Total	
Priority 1	1692.0	80.3	415.0	19.7	1827.0	84.0	349.0	16.0	1955.0	85.7	327.0	14.3	2259.0	85.8	374.0	14.2	2270.0	82.0	498.0	18.0	5.1
Priority 2	6578.0	87.1	970.0	12.9	7573.0	88.6	972.0	11.4	7543.0	89.9	845.0	10.1	7602.0	89.3	914.0	10.7	7625.0	88.8	961.0	11.2	0.8
Priority 3	20776.0	90.1	2277.0	9.9	18873.0	89.8	2145.0	10.2	17746.0	91.9	1562.0	8.1	16263.0	90.3	1753.0	9.7	14707.0	89.6	1716.0	10.4	-8.8
Priority 4	13492.0	89.9	1516.0	10.1	14834.0	92.0	1285.0	8.0	13056.0	92.6	1044.0	7.4	10763.0	91.5	1005.0	8.5	10298.0	92.2	869.0	7.8	-5.1
Other Alternative	47.0	85.5	8.0	14.5	55.0	88.7	7.0	11.3	49.0	89.1	6.0	10.9	50.0	94.3	3.0	5.7	10.0	100.0	0.0	0.0	-81.1
Total - All Priorities	42585.0	89.1	5186.0	10.9	43162.0	90.1	4758.0	9.9	40349.0	91.4	3784.0	8.6	36937.0	90.1	4049.0	9.9	34910.0	89.6	4044.0	10.4	-5.0

Calls for Service by Priority and Neighbourhood: January – September, 2010

Neighbourhood	priority 1	priority 2	Priority 3	Priority 4	Other	Total	% of Total City	% of Grand Total
COLVILLE	16	32	43	36		127	3.1	0.3
DEVONSHIRE	34	66	110	75		285	7.0	0.7
DN1		2	5	2		9	0.2	0.0
ESQUIMALT VILLAGE	97	262	445	216		1020	25.2	2.6
PANHANDLE	27	71	122	64		284	7.0	0.7
PARKLANDS	18	23	52	26		119	2.9	0.3
ROCKHEIGHTS	57	86	215	115		473	11.7	1.2
SAXE POINT	26	71	136	76		309	7.6	0.8
WEST BAY	171	251	419	169		1010	25.0	2.6
SELKIRK	52	97	168	90		407	10.1	1.0
TANK FARM	0	0	0	0	0	0	0.0	0.0
ESQUIMALT TOTAL	498	961	1715	869	0	4043	100.0	10.4
BURNSIDE GORGE	407	1274	1983	1296	6	4966	14.2	12.7
DOWNTOWN	364	2003	3365	2668		8400	24.1	21.6
FAIRFIELD	143	443	952	873		2411	6.9	6.2
FERNWOOD	188	448	934	664		2234	6.4	5.7
GONZALES	19	90	246	157		512	1.5	1.3
HARRIS GREEN	147	569	1048	558		2322	6.7	6.0
HILLSIDE QUADRA	226	440	920	561		2147	6.2	5.5
JAMES BAY	207	617	916	672		2412	6.9	6.2
NORTH JUBILEE	43	115	200	85		443	1.3	1.1
NORTH PARK	168	660	1899	1528	2	4257	12.2	10.9
OAKLANDS	115	319	682	407	1	1524	4.4	3.9
ROCKLAND	34	84	179	102		399	1.1	1.0
SOUTH JUBILEE	41	169	412	181	1	804	2.3	2.1
VIC WEST	165	380	848	470		1863	5.3	4.8
UNKNOWN	3	14	123	76		216	0.6	0.6
VICTORIA TOTAL	2270	7625	14707	10298	10	34910	100.0	89.6
GRAND TOTAL						38953		100.0

TOP 25 CALLS FOR SERVICE BY NEIGHBOURHOOD: January – September, 2010

TYPE OF CALL FOR SERVICE	COLVILLE	DEVONSHIRE	DN1	ESQUIMALT VILLAGE	PANHANDLE	PARKLANDS	ROCKHEIGHTS	SAXE POINT	SELKIRK
THEFT	10	27		48	24	10	43	14	31
UNWANTED PERSON		3		60	5	1	12	11	15
PROPERTY	3	7		36	7	2	17	15	15
ASSIST POLICE/FIRE/AMBULANCE	7	13		54	14	6	18	15	30
CHECK WELLBEING	4	8		60	16	6	22	12	25
DISTURBANCE	5	23		79	14	3	30	18	41
ABANDONED 911	4	13		42	5	4	16	17	18
SUSPICIOUS PERSON	5	7		18	11	2	13	13	10
ASSIST GENERAL PUBLIC	3	4	1	45	9	7	27	11	17
OTHER CRIMINAL CODE	1	7		11	12	1	6	1	5
DOMESTIC IN PROGRESS									
SIPP/DIPP	2	2		22	5		4	4	6
DRUGS				9	1	1	5	1	
IMPAIRED	4	7		32	20	3	11	5	14
FIGHT	1	2	1	29	4	2	9	6	3
SHOPLIFTER		1		22					
MISCHIEF	2	9		26	6	2	9	10	11
SUSPICIOUS CIRCUMSTANCES	1	4		23	10	3	11	10	7
ALARM		12		12	2	2	5		3
PARKING	5	3	2	27	6	2	9	7	4
TRAFFIC INCIDENT	3	5	1	8	15	2	14	3	3
BREACH	2	1		13	2	2	3	6	3
ASSAULT	3	7		27	4	1	4	3	10
BREAK AND ENTER	5	3		9	4	3	4	6	7
THREATS	1	3		22	8	1	13	8	11
Grand Total	127	285	9	1020	284	119	473	309	407

TOP 25 CALLS FOR SERVICE BY NEIGHBOURHOOD: January - September, 2010

TYPE OF CALL FOR SERVICE	WEST BAY	BURNSIDE GORGE	DOWNTOWN	FAIRFIELD	FERNWOOD	GONZALES	HARRIS GREEN	HILLSIDE QUADRA
THEFT	41	380	688	184	187	52	159	152
UNWANTED PERSON	52	261	708	157	164	8	360	84
PROPERTY	24	198	656	141	80	22	84	70
ASSIST POLICE/FIRE/AMBULANCE	71	252	422	105	94	20	161	77
CHECK WELLBEING	55	257	352	127	115	31	180	98
DISTURBANCE	80	152	153	153	198	49	71	144
ABANDONED 911	40	262	316	108	87	21	53	70
SUSPICIOUS PERSON	32	142	196	84	94	16	66	82
ASSIST GENERAL PUBLIC	30	138	186	48	56	23	41	53
OTHER CRIMINAL CODE	12	122	355	28	23	1	55	40
DOMESTIC IN PROGRESS		167	71	60	95	9	41	123
SIPP/DIPP	15	94	370	40	28	6	55	29
DRUGS	9	51	220	37	52	7	90	23
IMPAIRED	29	204	141	27	19	10	33	66
FIGHT	30	77	352	19	35	3	53	41
SHOPLIFTER	8	65	445	13	2	1	46	17
MISCHIEF	20	80	142	58	45	9	31	40
SUSPICIOUS CIRCUMSTANCES	19	102	97	45	45	12	49	49
ALARM	8	167	212	40	27	11	40	27
PARKING	6	58	109	71	75	13	34	65
TRAFFIC INCIDENT	8	128	108	39	26	5	34	64
BREACH	9	108	126	170	29	4	25	25
ASSAULT	23	78	210	14	24	4	38	24
BREAK AND ENTER	19	70	46	36	72	12	25	46
THREATS	23	64	68	40	29	8	25	33
Grand Total	1010	4966	8400	2411	2234	512	2322	2147

TOP 25 CALLS FOR SERVICE BY NEIGHBOURHOOD: January – September, 2010

TYPE OF CALL FOR SERVICE	JAMES BAY	NORTH JUBILEE	NORTH PARK	OAKLANDS	ROCKLAND	SOUTH JUBILEE	VIC WEST	UNKNOWN	Grand Total
THEFT	218	19	190	127	27	70	126	3	2844
UNWANTED PERSON	124	10	323	56	8	58	115	1	2603
PROPERTY	135	14	397	73	16	22	90	9	2154
ASSIST POLICE/FIRE/AMBULANCE	146	29	232	70	30	33	88	5	2014
CHECK WELLBEING	124	38	180	77	34	46	109	0	1982
DISTURBANCE	104	20	112	125	24	41	91	1	1735
ABANDONED 911	203	22	57	60	20	32	74		1553
SUSPICIOUS PERSON	87	14	94	58	16	30	65	2	1163
ASSIST GENERAL PUBLIC	81	15	190	50	15	18	59	2	1150
OTHER CRIMINAL CODE	16	4	139	13		5	34	92	1048
DOMESTIC IN PROGRESS	106	11	60	50	9	5	88	1	903
SIPP/DIPP	31	4	87	10	3	17	23	26	898
DRUGS	15	4	230	11	4	5	21	7	829
IMPAIRED	30	12	42	42		10	42	3	819
FIGHT	26	5	58	22		4	23	3	813
SHOPLIFTER	50	1	9	25		20	67	0	792
MISCHIEF	43	16	66	54	15	13	50	2	767
SUSPICIOUS CIRCUMSTANCES	70	8	67	40	10	16	45	1	753
ALARM	20	11	28	30	19	17	28	0	731
PARKING	47	5	86	27	11	5	34	1	714
TRAFFIC INCIDENT	30	12	79	29	5	5	51	17	710
BREACH	21		96	7	3	9	11	3	690
ASSAULT	33	6	71	9	4	14	21	1	638
BREAK AND ENTER	59	20	26	46	13	9	26	0	568
THREATS	28	7	74	24	5	18	19	0	535
Grand Total	2412	443	4257	1524	399	804	1863	216	39353