



ARCHIVED - Archiving Content

Archived Content

Information identified as archived is provided for reference, research or recordkeeping purposes. It is not subject to the Government of Canada Web Standards and has not been altered or updated since it was archived. Please contact us to request a format other than those available.

ARCHIVÉE - Contenu archivé

Contenu archivé

L'information dont il est indiqué qu'elle est archivée est fournie à des fins de référence, de recherche ou de tenue de documents. Elle n'est pas assujettie aux normes Web du gouvernement du Canada et elle n'a pas été modifiée ou mise à jour depuis son archivage. Pour obtenir cette information dans un autre format, veuillez communiquer avec nous.

This document is archival in nature and is intended for those who wish to consult archival documents made available from the collection of Public Safety Canada.

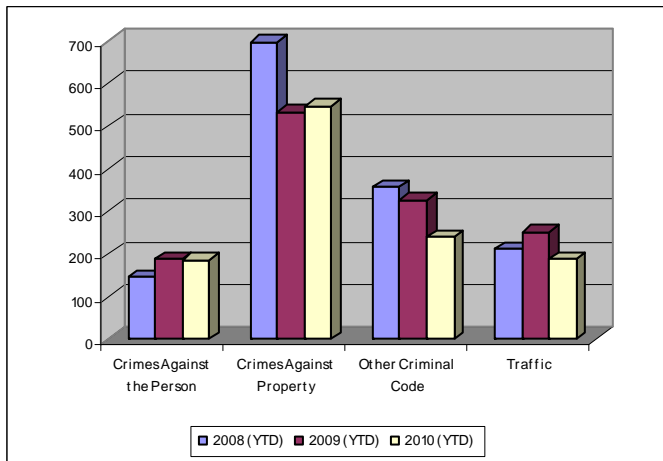
Some of these documents are available in only one official language. Translation, to be provided by Public Safety Canada, is available upon request.

Le présent document a une valeur archivistique et fait partie des documents d'archives rendus disponibles par Sécurité publique Canada à ceux qui souhaitent consulter ces documents issus de sa collection.

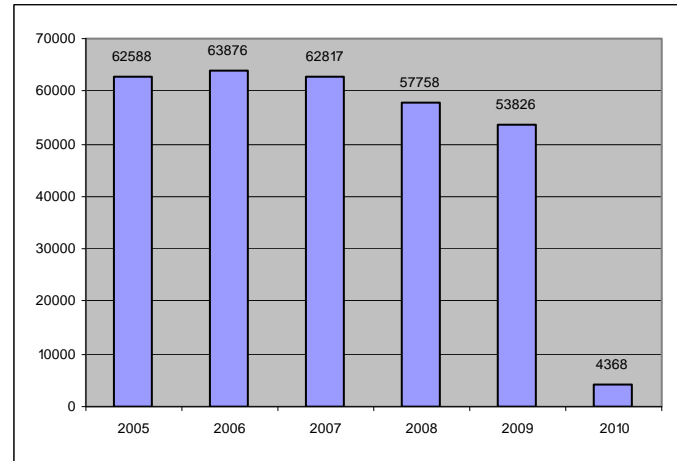
Certains de ces documents ne sont disponibles que dans une langue officielle. Sécurité publique Canada fournira une traduction sur demande.

Crime Trends for Victoria and Esquimalt : January to January 31, 2010, 2008 – 2010 (1,2)

Key Crime Trends



Total Calls for Service (Annual)



Key Crime Trends (January – January 31)

	2008		2009		2010		% Change 2008 - 2009(4)
	Jan-Jan	Rate (3)	Jan-Jan	Rate	Jan-Jan	Rate	
Crime Against the Person	145	151.8	189	197.9	187	195.8	-1.1
Crimes Against Property	696	728.8	532	557.1	548	573.8	3.0
Other Criminal Code of Canada Offences	358	374.9	326	341.4	240	251.3	-26.4
Total CCC Offences Exclud. Traffic	1199	1255.5	1047	1096.3	975	1021.0	-6.9
Traffic Offences	212	222.0	251	262.8	188	196.9	-25.1
Total CCC Offences and Traffic	1411	1477.5	1298	1359.2	1163	1217.8	-10.4

Notes:

1. The data presented is taken from the Police Records Information Management Environment (PRIME) database. Data that is coded and analyzed according to the requirements of the violation coding structure for Uniform Crime Reporting (UCR) survey as set up by Statistics Canada.
2. The crime statistics published in this report are accurate on the day that they were analyzed. Due to ongoing police investigation and internal data quality control efforts, this information is subject to change, including addition, deletion and reclassification of any and all data. Rates and percentages have been rounded.
3. Rate is calculated on a per 100,000 rate for each month and year. As provided by the City of Victoria, the 2008 and 2009 population was 95,499.
4. The % change is based on the actual values and are subject to (2).

Crimes Against Person (January – January 31)

	2008		2009		2010		% Change 2009 - 2010(4)
	Jan-Jan	Rate (3)	Jan-Jan	Rate	Jan-Jan	Rate	
Homicide	0	0	0	0.0	0	0.0	-
Attempted Murder	0	0	0	0.0	1	1.0	-
Robbery	16	16.8	14	14.7	19	19.9	35.7
Assault	83	86.9	134	140.3	141	147.6	5.2
Sexual Assault	8	8.4	5	5.2	14	14.7	180.0
Criminal Harassment	2	2.1	3	3.1	10	10.5	233.3
Uttering Threats	36	37.7	33	34.6	31	32.5	-6.1
Arson - Disregard for Life	0	0.0	0	0.0	0	0	-

Crimes Against Property (January – January 31)

	2008		2009		2010		% Change 2009 - 2010(4)
	Jan-Jan	Rate (3)	Jan-Jan	Rate	Jan-Jan	Rate	
B&E Business	41	42.9	25	26.2	20	20.9	-20.0
B&E-Other	26	27.2	17	17.8	15	15.7	-11.8
B&E-Residence	59	61.8	28	29.3	40	41.9	42.9
Fraud	52	54.5	34	35.6	30	31.4	-11.8
Possession of Stolen Property/Break and Enter Tools	22	23.0	23	24.1	12	12.6	-47.8
Theft Over \$5000	3	3.1	3	3.1	2	2.1	-33.3
Theft Under \$5000	107	112.0	96	100.5	103	107.9	7.3
Theft from Motor Vehicle	222	232.5	158	165.4	185	193.7	17.1
Theft of Motor Vehicle	30	31.4	29	30.4	35	36.6	20.7
Take Vehicle without Consent	1	1.0	2	2.1	1	1.0	-50.0
Theft of Bicycle	35	36.6	23	24.1	22	23.0	-4.3
Shoplifting	96	100.5	91	95.3	82	85.9	-9.9
Arson	2	2.1	3	3.1	1	1.0	-66.7

Other Criminal Code Offences (January – January 31)

	2008		2009		2010		% Change 2009 - 2010(4)
	Jan-Jan	Rate (3)	Jan-Jan	Rate	Jan-Jan	Rate	
Bail Violations/Breach of Probation	64	67.0	48	50.3	44	46.1	-8.3
Counterfeit Currency	19	19.9	6	6.3	2	2.1	-66.7
Drugs	81	84.8	57	59.7	46	48.2	-19.3
Indecent Acts	3	3.1	0	0.0	6	6.3	-
Mischief	172	180.1	190	199.0	126	131.9	-33.7
Offensive Weapons	19	19.9	20	20.9	16	16.8	-20.0

Traffic Offences (January – January 31)

	2007		2008		2009		% Change 2008 - 2009(4)
	Jan-Jan	Rate (3)	Jan-Jan	Rate	Jan-Jan	Rate	
Traffic - Collisions	74	77.5	67	70.2	74	77.5	10.4
Traffic - Fatal	0	0.0	0	0.0	0	0.0	n/c
Traffic - Other	50	52.4	118	123.6	80	83.8	-32.2
Dangerous Operation of Motor Vehicle	7	7.3	7	7.3	2	2.1	-71.4
Fail to Remain	26	27.2	25	26.2	9	9.4	-64.0
Impaired/Refuse	36	37.7	34	35.6	22	23.0	-35.3

Calls fro Service (January – January 31)

	2008				2009				2010				% Change '09- '10(4)
	Vic	% of Total	Esq	% of Total	Vic	% of Total	Esq	% of Total	Vic	% of Total	Esq	% of Total	
Priority 1: Emergency, dispatch immediate, high probability of death or grievous bodily harm	193	86.9	29	13.1	221	86.0	36	14.0	256	80.5	62	19.5	23.7
Priority 2: Urgent, dispatch immediate, not life threatening in nature	701	89.5	82	10.5	754	89.5	88	10.5	827	87.8	115	12.2	11.9
Priority 3: Routine: non-urgent	1655	90.8	167	9.2	1696	90.0	188	10.0	1640	90.2	179	9.8	-3.5
Priority 4: May or may not be dispatched, dependant on agency	1387	91.9	123	8.1	1092	91.0	108	9.0	1177	93.0	89	7.0	5.5
Other Alternative	4	0.0	0	-	2	0.0	0	0.0	0	-	0	-	-
Total - All Priorities	3940	90.8	401	9.2	3765	10.0	420	10.0	3900	89.8	445	10.2	3.8

Calls for Service by Priority and Neighbourhood: January – January 31, 2010

Neighbourhood	Priority 1	Priority 2	Priority 3	Priority 4	Other	Total	% of Total City	% of Grand Total
ESQUIMALT VILLAGE	12	35	50	25	0	122	27.4	2.8
WEST BAY	22	31	38	24	0	115	25.8	2.6
ROCKHEIGHTS	7	7	27	9	0	50	11.2	1.1
SELKIRK	7	13	16	10	0	46	10.3	1.1
SAXE POINT	2	5	8	7	0	22	4.9	0.5
DEVONSHIRE	5	9	11	8	0	33	7.4	0.8
PANHANDLE	3	9	18	4	0	34	7.6	0.8
COLVILLE	3	5	7	1	0	16	3.6	0.4
PARKLANDS	1	1	4	2	0	8	1.8	0.2
DND Base	0	0	0	0	0	0	0	0
TANK FARM	0	0	0	0	0	0	0	0
TOTAL ESQUIMALT	62	115	179	90	0	446	100.0	10.2
DOWNTOWN	36	216	373	302		927	23.8	21.2
BURNSIDE	48	142	215	189		594	15.2	13.6
NORTH PARK	22	68	216	207		513	13.2	11.7
HARRIS GREEN	22	63	141	66		292	7.5	6.7
FAIRFIELD	18	42	113	82		255	6.5	5.8
HILLSIDE QUADRA	23	44	105	67		239	6.1	5.5
FERNWOOD	20	50	104	57		231	5.9	5.3
JAMES BAY	21	54	86	50		211	5.4	4.8
VIC WEST	14	53	98	58		223	5.7	5.1
OAKLANDS	10	38	69	49		166	4.3	3.8
SOUTH JUBILEE	7	24	48	23		102	2.6	2.3
GONZALES	4	9	24	13		50	1.3	1.1
UNKNOWN	0	0	0	0		0	0.0	0.0
NORTH JUBILEE	5	13	23	8		49	1.3	1.1
ROCKLAND	6	11	25	5		47	1.2	1.1
TOTAL VICTORIA	256	827	1640	1176		3899		
Grand Total	320	946	1829	1273		4368		

TOP 25 CALLS FOR SERVICE BY NEIGHBOURHOOD: January – January 31, 2010

TYPE OF CALL FOR SERVICE	COLVILLE	DEVONSHIRE	DND Base	ESQUIMALT VILLAGE	PANHANDLE	PARKLANDS	ROCKHEIGHTS	SAXE POINT
THEFT		6	0	13		1	3	2
UNWANTED PERSON			0	10	1		3	
SUSPICIOUS CIRCUMSTANCES	2		0	9	3	1	2	1
CHECK WELLBEING		1	0	6	2		3	1
PROPERTY ASSIST			0	2	1		1	2
POLICE/FIRE/AMBULANCE	1	4	0	3	3		1	1
DISTURBANCE		3	0	7	1		8	
ABANDONED 911	1	2	0	7			2	1
ASSIST GENERAL PUBLIC	1	1	0	6	3		1	2
MISCHIEF	2	2	0	6	1		2	2
DOMESTIC	1	3	0	3	2		4	2
OTHER CRIMINAL CODE		1	0		3			
IMPAIRED		1	0	4	2		1	1
PUBLIC INTOXICATION			0	1			1	1
BREAK AND ENTER			0	2	1	1		
ASSAULT	1	2	0	4	1			1
ALARM			0	3			1	
BREACH		1	0	2				
TRAFFIC INCIDENT			0		3	1	5	
INTELLIGENCE INFORMATION			0				1	
FIGHT	1		0	2			2	
SHOPLIFTER			0	1				
DRUGS			0	1			2	
ASSIST OTHER AGENCY			0					
MVI	2		0	1	1			

Grand Total	16	33	0	122	34	8	50	22
-------------	----	----	---	-----	----	---	----	----

TOP 25 CALLS FOR SERVICE BY NEIGHBOURHOOD: January - January 31, 2010

TYPE OF CALL FOR SERVICE	SELKIRK	TANK FARM	WEST BAY	BURNSIDE	FAIRFIELD	FERNWOOD	GONZALES	HARRIS GREEN	HILLSIDE QUADRA	JAMES BAY
THEFT	6	0	2	55	17	20	3	28	13	19
UNWANTED PERSON	1	0	4	27	20	18	1	54	5	11
SUSPICIOUS CIRCUMSTANCES	2	0	7	34	23	20	5	18	9	11
CHECK WELLBEING	2	0	6	16	16	11	3	23	16	12
PROPERTY ASSIST	1	0	2	20	14	8	3	6	11	12
POLICE/FIRE/AMBULANCE	2	0	8	18	9	6	3	18	5	12
DISTURBANCE	5	0	3	18	16	14	5	14	12	10
ABANDONED 911	3	0	3	25	9	14	2	1	10	18
ASSIST GENERAL PUBLIC	1	0	4	18	3	10	1	5	13	11
MISCHIEF		0	4	28	5	8	2	4	7	4
DOMESTIC	5	0	19	22	5	11	2	4	12	10
OTHER CRIMINAL CODE	1	0		23	4	6		8	2	1
IMPAIRED	3	0	8	30	4	1	1	5	5	2
PUBLIC INTOXICATION	1	0	5	12	4	1		9	1	1
BREAK AND ENTER	2	0	2	20	8	4	1	5	12	5
ASSAULT		0	3	6	1	9		5	5	5
ALARM	1	0	1	23	6	4	3	5	1	1
BREACH		0		17	20	2	1	1	3	3
TRAFFIC INCIDENT	1	0	3	17	8	4	2	5	6	3
INTELLIGENCE INFORMATION		0	2	3		6		6	5	4
FIGHT	1	0	4	13	1	3		1	4	1
SHOPLIFTER		0		14		1			4	8
DRUGS		0		6	4	2		7	3	
ASSIST OTHER AGENCY	1	0	1	7	5	1		3	4	2
MVI		0		13	10	3	2	6	4	1
Grand Total	46	0	115	594	255	231	50	292	239	211

TOP 25 CALLS FOR SERVICE BY NEIGHBOURHOOD: January – January 31, 2010

TYPE OF CALL FOR SERVICE	NORTH JUBILEE	NORTH PARK	OAKLANDS	ROCKLAND	SOUTH JUBILEE	VIC WEST	DOWNTOWN	Grand Total	Unknown
THEFT	3	35	5	1	6	10	94	342	
UNWANTED PERSON		58	5		9	9	64	300	
SUSPICIOUS CIRCUMSTANCES		14	13	2	6	21	40	247	
CHECK WELLBEING	7	20	12	6	9	16	46	234	
PROPERTY ASSIST	2	58	9	1		14	61	228	
POLICE/FIRE/AMBULANCE	3	23	8	5	5	14	48	203	
DISTURBANCE	5	10	9	4	5	14	16	179	
ABANDONED 911	4	3	8	4		7	18	142	
ASSIST GENERAL PUBLIC		16	10	3		8	19	136	
MISCHIEF	3	12	12	2	2	7	21	136	
DOMESTIC	1	7	3			13	4	134	
OTHER CRIMINAL CODE	1	18	2			2	41	115	
IMPAIRED	1	4	8		3	6	17	108	
PUBLIC INTOXICATION		17			4	4	43	105	
BREAK AND ENTER	1	8	7	1	2	6	13	101	
ASSAULT		14					40	97	
ALARM	3	6	1	2	3	7	25	96	
BREACH		13	1		2	3	22	94	
TRAFFIC INCIDENT	2	5	5	1	1	4	18	94	
INTELLIGENCE INFORMATION		35	5	2	1	4	13	88	
FIGHT	1	7	2		1	1	39	84	
SHOPLIFTER			4		4	4	34	74	
DRUGS		15	3	1	3	5	16	68	
ASSIST OTHER AGENCY		18	2	2	10		7	65	
MVI	1	5	2		2	3	5	63	
Grand Total	49	513	166	47	102	223	927	4368	1