



## ARCHIVED - Archiving Content

### Archived Content

Information identified as archived is provided for reference, research or recordkeeping purposes. It is not subject to the Government of Canada Web Standards and has not been altered or updated since it was archived. Please contact us to request a format other than those available.

## ARCHIVÉE - Contenu archivé

### Contenu archivé

L'information dont il est indiqué qu'elle est archivée est fournie à des fins de référence, de recherche ou de tenue de documents. Elle n'est pas assujettie aux normes Web du gouvernement du Canada et elle n'a pas été modifiée ou mise à jour depuis son archivage. Pour obtenir cette information dans un autre format, veuillez communiquer avec nous.

This document is archival in nature and is intended for those who wish to consult archival documents made available from the collection of Public Safety Canada.

Some of these documents are available in only one official language. Translation, to be provided by Public Safety Canada, is available upon request.

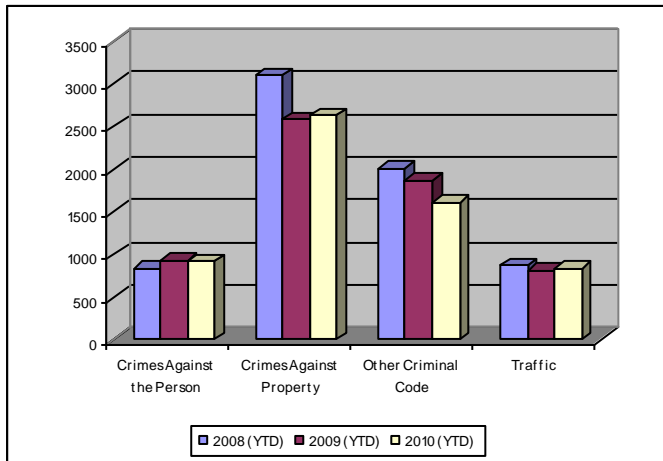
Le présent document a une valeur archivistique et fait partie des documents d'archives rendus disponibles par Sécurité publique Canada à ceux qui souhaitent consulter ces documents issus de sa collection.

Certains de ces documents ne sont disponibles que dans une langue officielle. Sécurité publique Canada fournira une traduction sur demande.

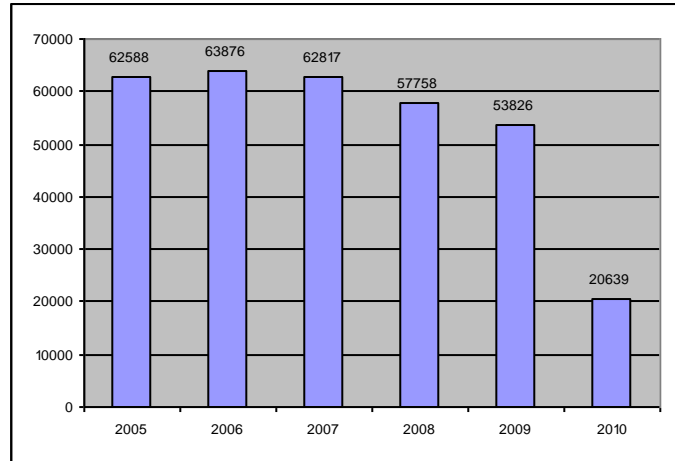
# Crime Trends for Victoria and Esquimalt 2008 – 2010 <sup>(1,2)</sup>

## January to May

### Key Crime Trends



### Total Calls for Service (Annual)



### Key Crime Trends (January – May 31)

	2008		2009		2010		% Change 2009-2010 <sup>(4)</sup>
	Jan - May	Rate <sup>(3)</sup>	Jan - May	Rate	Jan - May	Rate	
<b>Crime Against the Person</b>	831	870.2	930	973.8	914	957.1	-1.7
<b>Crimes Against Property</b>	3098	3244.0	2579	2700.6	2625	2748.7	1.8
<b>Other Criminal Code of Canada Offences</b>	2008	2102.6	1868	1956.0	1615	1691.1	-13.5
<b>Total CCC Offences Exclud. Traffic</b>	5937	6216.8	5377	5630.4	5154	5396.9	-4.1
<b>Traffic Offences</b>	868	908.9	811	849.2	831	870.2	2.5
<b>Total CCC Offences and Traffic</b>	6805	7125.7	6188	6479.6	5985	6267.1	-3.3

### Notes:

1. The data presented are taken from the Police Records Information Management Environment (PRIME) database. Data are coded and analyzed according to the requirements of the violation coding structure for Uniform Crime Reporting (UCR) survey as set up by Statistics Canada.
2. The crime statistics published in this report are accurate on the day that they were analyzed. Due to ongoing police investigation and internal data quality control efforts, this information is subject to change, including addition, deletion and reclassification of any and all data. Rates and percentages have been rounded.
3. Rate is calculated on a per 100,000 rate for each month and year. As provided by the CRD, the 2008 and 2009 population was 95,499.
4. The % change is based on the actual values and are subject to (2).

### Crimes Against Person (January – May 31)

	2008		2009		2010		% Change 2009-2010 <sup>1</sup>
	Jan - May	Rate (3)	Jan - May	Rate	Jan - May	Rate	
Homicide	0	0	0	0.0	1	1.0	-
Attempted Murder	0	0	1	1.0	1	1.0	-
Robbery/Extortion	75	78.5	79	82.7	87	91.1	10.1
Assault	518	542.4	632	661.8	578	605.2	-8.5
Sexual Assault	32	33.5	33	34.6	59	61.8	78.8
Criminal Harassment	30	31.4	25	26.2	41	42.9	64.0
Uttering Threats	174	182.2	159	166.5	147	153.9	-7.5
Arson - Disregard for Life	2	2.1	1	1.0	0	0	-

### Crimes Against Property (January – May 31)

	2008		2009		2010		% Change 2009-2010 <sup>1</sup>
	Jan - May	Rate (3)	Jan - May	Rate	Jan - May	Rate	
B&E Business	160	167.5	81	84.8	76	79.6	-6.2
B&E-Other	84	88.0	57	59.7	64	67.0	12.3
B&E-Residence	347	363.4	133	139.3	194	203.1	45.9
Fraud/Counterfeit Currency	243	254.5	217	227.2	227	237.7	4.6
Possession of Stolen Property/Break and Enter Tools	107	112.0	83	86.9	50	52.4	-39.8
Theft Over \$5000	12	12.6	18	18.8	10	10.5	-44.4
Theft Under \$5000	491	514.1	464	485.9	459	480.6	-1.1
Theft from Motor Vehicle	905	947.7	749	784.3	808	846.1	7.9
Theft of Motor Vehicle	128	134.0	123	128.8	135	141.4	9.8
Take Vehicle without Consent	23	24.1	12	12.6	5	5.2	-58.3
Theft of Bicycle	176	184.3	145	151.8	99	103.7	-31.7
Shoplifting	405	424.1	488	511.0	486	508.9	-0.4
Arson	16	16.8	9	9.4	12	12.6	33.3

### Other Criminal Code Offences (January – May 31)

	2008		2009		2010		% Change 2009-2010 <sup>1</sup>
	Jan - May	Rate (3)	Jan - May	Rate	Jan - May	Rate	
Bail Violations/Breach of Probation	269	281.7	268	280.6	238	249.2	-11.2
Domestic Dispute	356	372.8	352	368.6	406	425.1	15.3
Drugs	389	407.3	275	288.0	231	241.9	-16.0
Indecent Acts	20	20.9	30	31.4	22	23.0	-26.7
Mischief	896	938.2	863	903.7	657	688.0	-23.9
Offensive Weapons	78	81.7	76	79.6	61	63.9	-19.7

### Traffic Offences (January – May 31)

	2008		2009		2010		% Change 2009-2010 <sup>))</sup>
	Jan - May	Rate (3)	Jan - May	Rate	Jan - May	Rate	
<b>Traffic - Collisions</b>	337	352.9	323	338.2	337	352.9	4.3
<b>Traffic - Fatal</b>	0	0.0	0	0.0	0	0.0	n/c
<b>Traffic - Other</b>	171	179.1	129	135.1	272	284.8	110.9
<b>Dangerous Operation of Motor Vehicle</b>	36	37.7	55	57.6	8	8.4	-85.5
<b>Fail to Remain</b>	147	153.9	130	136.1	62	64.9	-52.3
<b>Impaired/Refuse</b>	177	185.3	174	182.2	152	159.2	-12.6

### Calls for Service (January – May 31)

	2008				2009				2010				% Change '09-'10 <sup>(4)</sup>
	Vic	% of Total	Esq	% of Total	Vic	% of Total	Esq	% of Total	Vic	% of Total	Esq	% of Total	
<b>Priority 1:</b> Emergency, dispatch immediate, high probability of death or grievous bodily harm	1044	85.6	176	14.4	1131	85.6	190	14.4	1188	80.5	288	19.5	23.7
<b>Priority 2:</b> Urgent, dispatch immediate, not life threatening in nature	4007	90.5	423	9.5	3985	89.4	473	10.6	4145	89.2	504	10.8	11.9
<b>Priority 3:</b> Routine: non-urgent	9355	92.3	782	7.7	8554	90.8	866	9.2	7722	89.8	873	10.2	-3.5
<b>Priority 4:</b> May or may not be dispatched, dependant on agency	6914	92.5	561	7.5	5635	91.6	520	8.4	5258	92.2	444	7.8	5.5
<b>Other</b> Alternative	32	-0.1	2	100.1	19	90.5	2	9.5	5	-	0	-	-
<b>Total - All Priorities</b>	21352	91.7	1944	8.3	19324	90.4	2051	9.6	18318	89.7	2109	10.3	3.8

## Calls for Service by Priority and Neighbourhood: January – May 31, 2010

Neighbourhood	Priority 1	Priority 2	Priority 3	Priority 4	Other	Total	% of Total City	% of Grand Total
COLVILLE	9	18	26	15		68	3.2	0.3
DEVONSHIRE	25	39	52	35		151	7.2	0.7
DN1		1		2		3	0.1	0.0
ESQUIMALT VILLAGE	56	133	221	117		527	25.0	2.6
PANHANDLE	12	36	54	31		133	6.3	0.6
PARKLANDS	7	12	27	12		58	2.8	0.3
ROCKHEIGHTS	31	40	118	56		245	11.6	1.2
SAXE POINT	16	45	59	41		161	7.6	0.8
WESTBAY	105	127	230	85		547	25.9	2.7
SELKIRK	27	52	86	50		215	10.2	1.0
TANK FARM								
ESQUIMALT TOTAL	288	503	873	444		2108	100.0	10.2

BURNSIDE GORGE	204	732	1051	715	3	2705	14.7	13.1
DOWNTOWN	188	1052	1790	1363		4393	23.8	21.3
FAIRFIELD	77	246	481	439		1243	6.7	6.0
FERNWOOD	95	230	480	293		1098	6.0	5.3
GONZALES	11	41	116	67		235	1.3	1.1
HARRIS GREEN	79	311	563	288		1241	6.7	6.0
HILLSIDE QUADRA	119	239	489	292		1139	6.2	5.5
JAMES BAY	116	318	479	346		1259	6.8	6.1
NORTH JUBILEE	19	63	114	55		251	1.4	1.2
NORTH PARK	92	364	1018	793		2267	12.3	11.0
OAKLANDS	58	191	376	235	1	861	4.7	4.2
ROCKLAND	20	44	105	47		216	1.2	1.0
SOUTH JUBILEE	27	105	222	92	1	447	2.4	2.2
VIC WEST	82	209	435	226		952	5.2	4.6
OTHER	2	8	71	33		114	0.6	0.6
VICTORIA TOTAL	1189	4153	7790	5284	5	18421	100.0	89.3
Grand Total	1488	4685	8706	5755	5	20639		

**TOP 25 CALLS FOR SERVICE BY NEIGHBOURHOOD: January – May 31,2010**

TYPE OF CALL FOR SERVICE	COLVILLE	DEVONSHIRE	DND Base	ESQUIMALT VILLAGE	PANHANDL E	PARKLANDS	ROCKHEIGHTS	SAXE POINT
THEFT	4	18		31	11	4	13	9
UNWANTED PERSON		1		41	1		8	6
CHECK WELLBEING	2	4		25	8	4	13	4
PROPERTY				22	2	2	9	8
ASSIST POLICE/FIRE/AMBULANCE	5	7		27	7	3	8	7
ABANDONED 911	2	9		23	2	2	10	11
DISTURBANCE	2	11		31	3		16	3
DOMESTIC DISPUTE	5	19		24	6	5	19	10
ASSIST GENERAL PUBLIC	3	1		23	6	3	12	7
MISCHIEF	5	4		20	8	1	7	9
SUSPICIOUS PERSON	5	2		10	3	2	5	8
OTHER CRIMINAL CODE		4		7	5	1	3	
IMPAIRED	4	4		18	12	2	5	4
INTOXICATED IN PUBLIC	1	2		9	2		2	2
ASSAULT	2	7		23	2	1	5	2
ALARM		3		13		2	5	
SHOPLIFTER				10				
SUSPICIOUS CIRCUMSTANCES	1	1		13	5		7	8
FIGHT	1	2		10	1	1	5	1
BREAK AND ENTER	3	3		11	2	2	7	9
BREACH	2	1		6	1	1	1	1
TRAFFIC INCIDENT	2	2		3	8	1	6	2
DRUGS				3	1		2	
PARKING		1	2	12	5	1	6	3
ASSIST OTHER AGENCY	1	4	1	1		1	6	1
Grand Total	68	151	3	527	133	58	245	161

**TOP 25 CALLS FOR SERVICE BY NEIGHBOURHOOD: January – May 31, 2010**

TYPE OF CALL FOR SERVICE	SELKIRK	TANK FARM	WEST BAY	BURNSIDE	FAIRFIELD	FERNWOOD	GONZALES	HARRIS GREEN	HILLSIDE QUADRA	JAMES BAY
THEFT	19		20	224	106	90	27	113	73	138
UNWANTED PERSON	7		28	140	75	75	5	206	48	76
CHECK WELLBEING	18		32	129	70	55	10	88	55	61
PROPERTY	5		8	100	62	41	8	40	37	62
ASSIST POLICE/FIRE/AMBULANCE	14		37	127	53	48	13	84	34	72
ABANDONED 911	11		23	151	67	50	11	26	40	110
DISTURBANCE	23		31	74	69	89	23	44	82	39
DOMESTIC DISPUTE	21		65	95	34	54	5	23	67	59
ASSIST GENERAL PUBLIC	6		16	82	21	32	5	27	34	47
MISCHIEF	9		10	72	48	28	6	27	37	32
SUSPICIOUS PERSON	4		17	75	48	39	8	33	34	35
OTHER CRIMINAL CODE	2		5	78	16	14		30	21	8
IMPAIRED	6		21	129	11	8	5	18	37	14
INTOXICATED IN PUBLIC	3		9	55	20	13	2	33	16	14
ASSAULT	4		21	52	6	25	1	25	18	24
ALARM	2		5	99	24	16	5	28	16	18
SHOPLIFTER			6	41	10	1	1	14	7	31
SUSPICIOUS CIRCUMSTANCES	4		12	65	30	33	8	30	26	35
FIGHT	3		16	47	14	14		20	23	19
BREAK AND ENTER	6		12	51	27	45	8	21	33	33
BREACH			5	72	93	13	3	11	14	14
TRAFFIC INCIDENT	2		6	67	19	19	3	21	35	14
DRUGS			6	33	21	11	2	38	12	6
PARKING	2		3	24	28	30	2	17	31	21
ASSIST OTHER AGENCY	1		4	27	15	10	2	10	10	15
Grand Total	215		547	2705	1243	1098	235	1241	1139	1259

**TOP 25 CALLS FOR SERVICE BY NEIGHBOURHOOD: January – May 31, 2010**

TYPE OF CALL FOR SERVICE	NORTH JUBILEE	NORTH PARK	OAKLANDS	ROCKLAND	SOUTH JUBILEE	VIC WEST	DOWNTOWN	UNKNOWN	GRAND TOTAL
THEFT	10	116	68	12	33	57	421	1	1623
UNWANTED PERSON	6	193	29	2	29	61	350	0	1387
CHECK WELLBEING	23	86	52	25	26	53	195	0	1039
PROPERTY ASSIST	7	210	39	4	11	46	302	4	1034
POLICE/FIRE/AMBULANCE	15	132	36	11	24	41	214	3	1030
ABANDONED 911	10	29	37	14	13	45	152	0	851
DISTURBANCE	11	50	57	9	17	36	70	0	790
DOMESTIC DISPUTE	4	34	26	5	3	47	30	1	663
ASSIST GENERAL PUBLIC	10	99	35	8	13	29	101	1	627
MISCHIEF	18	47	44	12	15	36	121	1	620
SUSPICIOUS PERSON	6	49	30	8	16	41	111	2	594
OTHER CRIMINAL CODE	3	77	6		2	17	170	56	534
IMPAIRED	8	23	25		7	29	89	2	485
INTOXICATED IN PUBLIC	3	50	7	3	10	12	191	7	468
ASSAULT	2	51	5	2	7	8	169	0	465
ALARM	10	21	15	15	11	21	125	0	457
SHOPLIFTER	1	4	20		13	35	260	0	454
SUSPICIOUS CIRCUMSTANCES	5	40	25	8	9	25	54	0	449
FIGHT	3	33	11		4	11	179	2	421
BREAK AND ENTER	17	18	35	8	8	17	41	0	420
BREACH		46	6	1	5	7	71	0	380
TRAFFIC INCIDENT	8	43	20	3	3	23	57	8	380
DRUGS	1	99	9	2	4	15	99	1	367
PARKING	3	42	13	5	3	19	63	1	338
ASSIST OTHER AGENCY	2	85	17	2	27	6	25	3	280
Grand Total	251	2267	861	216	447	952	4393	114	20639