



ARCHIVED - Archiving Content

Archived Content

Information identified as archived is provided for reference, research or recordkeeping purposes. It is not subject to the Government of Canada Web Standards and has not been altered or updated since it was archived. Please contact us to request a format other than those available.

ARCHIVÉE - Contenu archivé

Contenu archivé

L'information dont il est indiqué qu'elle est archivée est fournie à des fins de référence, de recherche ou de tenue de documents. Elle n'est pas assujettie aux normes Web du gouvernement du Canada et elle n'a pas été modifiée ou mise à jour depuis son archivage. Pour obtenir cette information dans un autre format, veuillez communiquer avec nous.

This document is archival in nature and is intended for those who wish to consult archival documents made available from the collection of Public Safety Canada.

Some of these documents are available in only one official language. Translation, to be provided by Public Safety Canada, is available upon request.

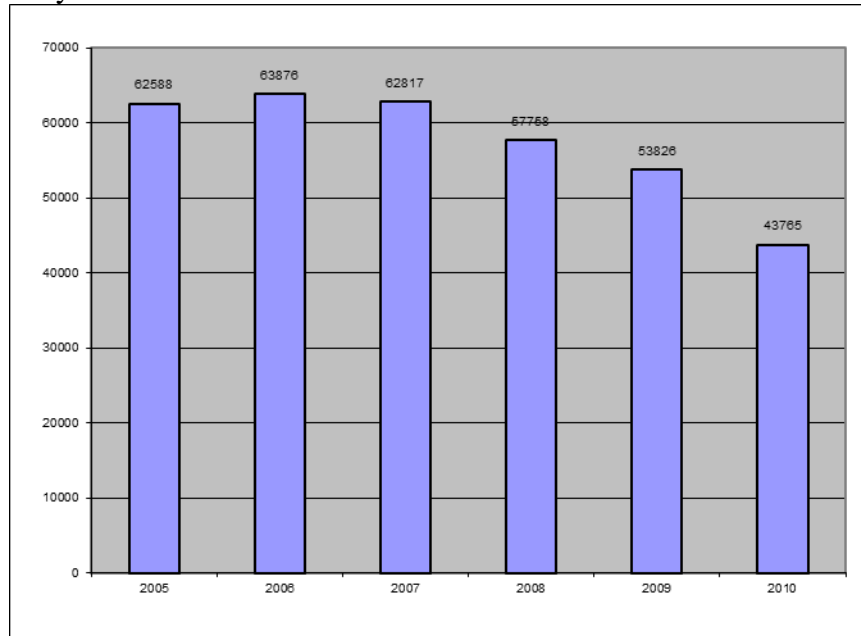
Le présent document a une valeur archivistique et fait partie des documents d'archives rendus disponibles par Sécurité publique Canada à ceux qui souhaitent consulter ces documents issus de sa collection.

Certains de ces documents ne sont disponibles que dans une langue officielle. Sécurité publique Canada fournira une traduction sur demande.

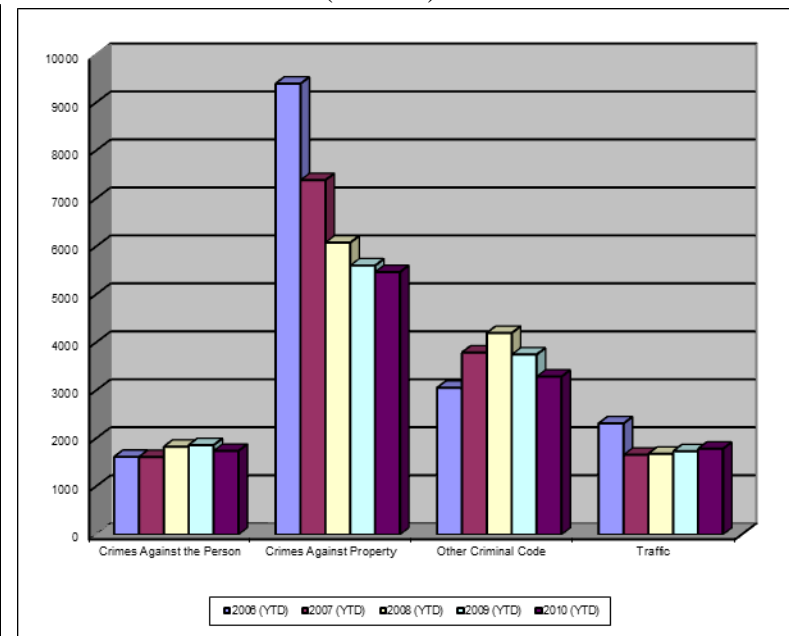


Crime Trends for Victoria and Esquimalt 2006 – 2010 ^(1,2) January to October

Key Crime Trends



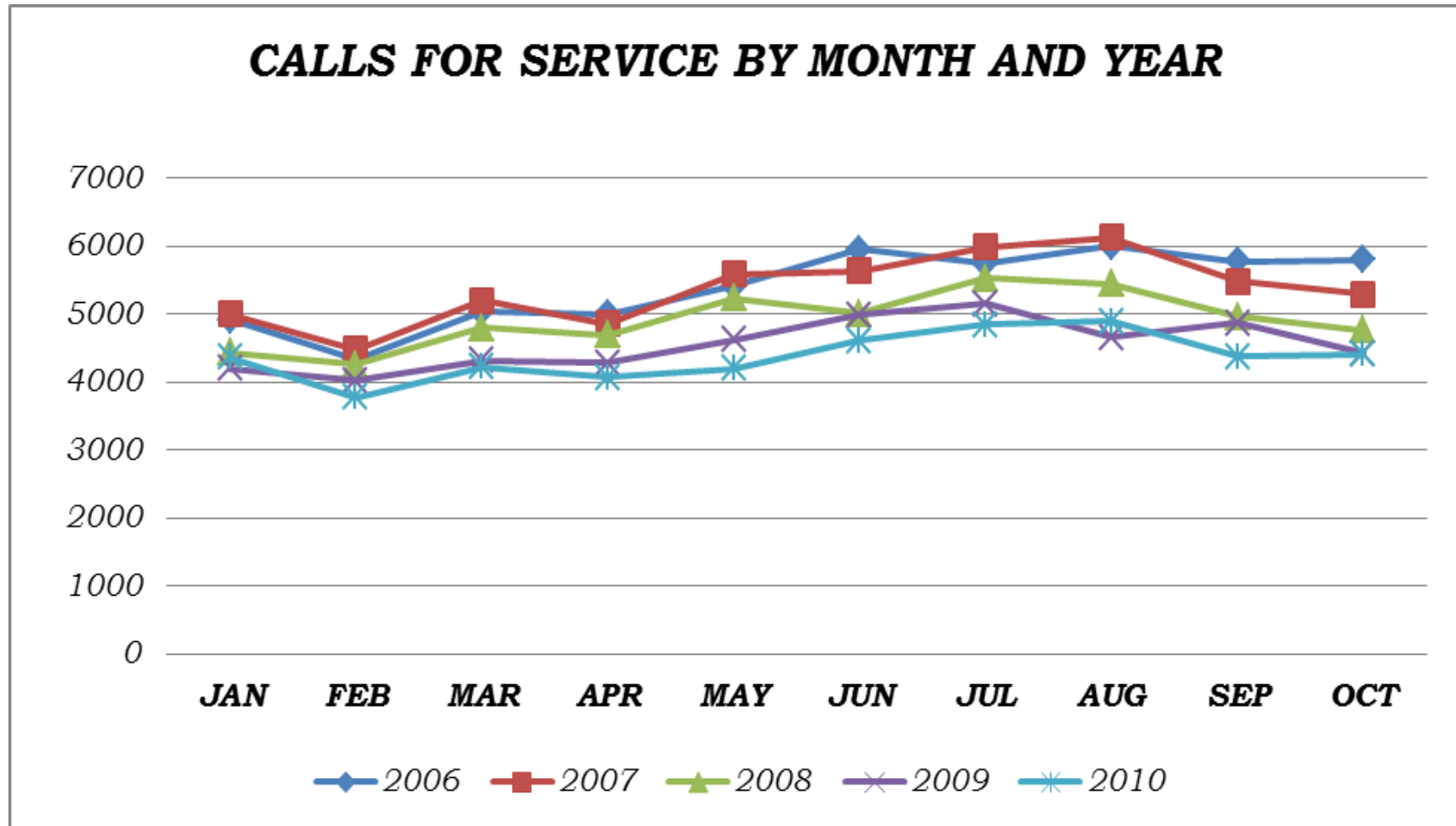
Total Calls for Service (Annual)



Notes

1. The data presented are taken from the Police Records Information Management Environment (PRIME) database. Data are coded and analyzed according to the requirements of the violation coding structure for Uniform Crime Reporting (UCR) survey as set up by Statistics Canada.
2. The crime statistics published in this report are accurate on the day that they were analyzed. Due to ongoing police investigation and internal data quality control efforts, this information is subject to change, including addition, deletion and reclassification of any and all data. Rates and percentages have been rounded.
3. As provided by the City of Victoria, the 2006 and 2007 population was 94,897; for 2008 – 2010 population is 95,499..
4. The % change is based on the actual values and are subject to (2).

CALLS FOR SERVICE BY MONTH AND YEAR



Key Crime Trends (January – October)

	2006		2007		2008		2009		2010		% Change 2009 - 2010(4)
	Jan-Oct	Rate(3)	Jan-Oct	Rate(3)	Jan-Oct	Rate(3)	Jan-Oct	Rate(3)	Jan-Oct	Rate(3)	
Crimes Against the Person	1619	1706.1	1618	1705.0	1831	1917.3	1865	1952.9	1744	1826.2	-6.5
Crimes Against Property	9400	9905.5	7387	7784.2	6085	6371.8	5608	5872.3	5472	5729.9	-2.4
Other Criminal Code of Canada Offences	3060	3224.5	3795	3999.1	4201	4399.0	3751	3927.8	3290	3445.1	-12.3
Total CCC Offences Excluding Traffic	14079	14836.1	12800	13488.3	12117	12688.1	11224	11753.0	10506	11001.2	-6.4
Traffic Offences	2315	2439.5	1661	1750.3	1682	1761.3	1735	1816.8	1787	1871.2	3.0
Total CCC Offences and Traffic	16394	17275.6	14461	15238.6	13799	14449.4	12959	13569.8	12293	12872.4	-5.1

Crimes Against Person (January – October)

	2006		2007		2008		2009		2010		% Change 2009 - 2010(4)
	Jan-Oct	Rate(3)	Jan-Oct	Rate(3)	Jan-Oct	Rate(3)	Jan-Oct	Rate(3)	Jan-Oct	Rate(3)	
Homicide	3	3.2	-	-	1	1.0	1	-	2	-	-
Attempted Murder	1	1.1	-	-	2	2.1	4	4.2	1	1.0	-75.0
Robbery/Extortion	144	151.7	146	153.9	155	162.3	176	184.3	177	185.3	0.6
Assault	1045	1101.2	1077	1134.9	1200	1256.6	1235	1293.2	1130	1183.3	-8.5
Sexual Assault	86	90.6	68	71.7	80	83.8	68	71.2	97	101.6	42.6
Criminal Harassment	53	55.9	26	27.4	59	61.8	51	53.4	63	66.0	23.5
Uttering Threats	276	290.8	297	313.0	329	344.5	323	338.2	275	288.0	-14.9
Arson - Disregard for Life	10	10.5	4	4.2	5	5.2	3	3.1	-	-	-

Crimes Against Property (January – October)

	2006		2007		2008		2009		2010		% Change 2009 - 2010(4)
	Jan-Oct	Rate(3)	Jan-Oct	Rate(3)	Jan-Oct	Rate(3)	Jan-Oct	Rate(3)	Jan-Oct	Rate(3)	
B&E Business	503	530.0	423	445.7	293	306.8	183	191.6	142	148.7	-22.4
B&E-Other	401	422.6	188	198.1	217	227.2	161	168.6	123	128.8	-23.6
B&E-Residence	482	507.9	566	596.4	556	582.2	328	343.5	424	444.0	29.3
Fraud/Counterfeit Currency	606	638.6	617	650.2	506	529.8	442	462.8	521	545.6	17.9
Possession of Stolen Property/Break and Enter Tools	249	262.4	287	302.4	179	187.4	184	192.7	112	117.3	-39.1
Theft Over \$5000	26	27.4	22	23.2	21	22.0	27	28.3	21	22.0	-22.2
Theft Under \$5000	1294	1363.6	1242	1308.8	1025	1073.3	1071	1121.5	910	952.9	-15.0
Theft from Motor Vehicle	3059	3223.5	2203	2321.5	1691	1770.7	1554	1627.2	1693	1772.8	8.9
Theft of Motor Vehicle	497	523.7	428	451.0	304	318.3	295	308.9	213	223.0	-27.8
Take Vehicle without Consent	22	23.2	28	29.5	32	33.5	22	23.0	17	17.8	-22.7
Theft of Bicycle	554	583.8	439	462.6	394	412.6	344	360.2	302	316.2	-12.2
Shoplifting	900	948.4	906	954.7	832	871.2	971	1016.8	972	1017.8	0.1
Arson	32	33.7	38	40.0	35	36.6	26	27.2	22	23.0	-15.4

Other Criminal Code Offences (January – October)

	2006		2007		2008		2009		2010		% Change 2009 - 2010(4)
	Jan-Oct	Rate(3)	Jan-Oct	Rate(3)	Jan-Oct	Rate(3)	Jan-Oct	Rate(3)	Jan-Oct	Rate(3)	
Bail Violations/Breach of Probation	675	711.3	694	731.3	562	588.5	555	581.2	538	563.4	-3.1
Domestic Dispute	792	834.6	646	680.7	785	822.0	784	821.0	800	837.7	2.0
Drugs	589	620.7	763	804.0	919	962.3	621	650.3	633	662.8	1.9
Indecent Acts	46	48.5	52	54.8	33	34.6	59	61.8	39	40.8	-33.9
Mischief	1474	1553.3	1461	1539.6	1892	1981.2	1593	1668.1	1173	1228.3	-26.4
Offensive Weapons	159	167.6	179	188.6	152	159.2	139	145.6	107	112.0	-23.0

Traffic Offences (January – October)

	2006		2007		2008		2009		2010		% Change 2009 - 2010(4)
	Jan-Oct	Rate(3)	Jan-Oct	Rate(3)	Jan-Oct	Rate(3)	Jan-Oct	Rate(3)	Jan-Oct	Rate(3)	
Traffic - Collisions	1013	1067.5	726	765.0	701	734.0	734	768.6	713	746.6	-2.9
Traffic - Fatal	1	1.1	1	1.1	0	0.0	2	2.1	1	1.0	-50.0
Traffic - Other	695	732.4	383	403.6	343	359.2	395	413.6	649	679.6	64.3
Dangerous Operation of Motor Vehicle	11	11.6	13	13.7	11	11.5	11	11.5	8	8.4	-27.3
Fail to Remain	336	354.1	321	338.3	307	321.5	237	248.2	129	135.1	-45.6
Impaired/Refuse	259	272.9	217	228.7	320	335.1	356	372.8	287	300.5	-19.4

Calls for Service (January – October)

	2006				2007.0				2008.0				2009.0				2010.0				% Change 2009 - 2010(4)
	Vic	% of Total	Esq	% of Total	Vic	% of Total	Esq	% of Total	Vic	% of Total	Esq	% of Total	Vic	% of Total	Esq	% of Total	Vic	% of Total	Esq	% of Total	
Priority 1	1893	80.7	452	19.3	2017	84.0	383	16.0	2165	85.6	365	14.4	2511	85.5	426	14.5	2524	82.1	550	17.9	4.7
Priority 2	7386	87.6	1046	12.4	8540	88.8	1076	11.2	8361	90.0	934	10.0	8415	89.3	1013	10.7	8449	88.9	1059	11.1	0.8
Priority 3	23274	90.5	2432	9.5	20989	90.1	2313	9.9	19373	91.7	1755	8.3	17915	90.2	1943	9.8	16245	89.6	1887	10.4	-8.7
Priority 4	15292	90.1	1675	9.9	16357	92.0	1423	8.0	14209	92.3	1179	7.7	12024	91.5	1116	8.5	11399	92.2	969	7.8	-5.9
Other Alternative	59	85.5	10	14.5	63	88.7	8	11.3	57	90.5	6	9.5	53	94.6	3	5.4	13	100.0	0	0.0	-76.8
Total - All Priorities	47904.0	89.5	5615.0	10.5	47966.0	90.2	5203.0	9.8	44165.0	91.2	4239.0	8.8	40918.0	90.1	4501.0	9.9	38630.0	89.6	4465.0	10.4	-5.1

Calls for Service by Priority and Neighbourhood: January – October, 2010

Neighbourhood	priority 1	priority 2	Priority 3	Priority 4	Other	Total	% of Total City	% of Grand Total
COLVILLE	17	35	49	37		138	3.1	0.3
DEVONSHIRE	35	71	121	85		312	7.0	0.7
DN1		2	5	2		9	0.2	0.0
ESQUIMALT VILLAGE	104	283	485	243		1115	25.0	2.6
PANHANDLE	32	76	137	71		316	7.1	0.7
PARKLANDS	21	25	58	31		135	3.0	0.3
ROCKHEIGHTS	64	95	243	122		524	11.7	1.2
SAXE POINT	32	82	149	86		349	7.8	0.8
WEST BAY	190	277	456	191		1114	25.0	2.6
SELKIRK	55	111	185	98		449	10.1	1.0
TANK FARM	0	0	0	0		0	0.0	0.0
ESQUIMALT TOTAL	550	1057	1888	966		4461	100.0	10.3
BURNSIDE GORGE	454	1410	2232	1460	6	5562	14.3	12.9
DOWNTOWN	409	2224	3751	2973		9357	24.1	21.6
FAIRFIELD	160	488	1082	953		2683	6.9	6.2
FERNWOOD	205	501	1041	722		2469	6.4	5.7
GONZALES	22	98	272	169		561	1.4	1.3
HARRIS GREEN	163	631	1172	627	1	2594	6.7	6.0
HILLSIDE QUADRA	253	481	1036	621	1	2392	6.2	5.5
JAMES BAY	232	691	1013	755	1	2692	6.9	6.2
NORTH JUBILEE	47	135	219	98		499	1.3	1.2
NORTH PARK	186	736	2055	1702	2	4681	12.1	10.8
OAKLANDS	124	360	765	443	1	1693	4.4	3.9
ROCKLAND	38	92	190	110		430	1.1	1.0
SOUTH JUBILEE	44	187	448	209	1	889	2.3	2.1
VIC WEST	183	415	944	533		2075	5.3	4.8
UNKNOWN	3	14	128	80		225	0.6	0.5
VICTORIA TOTAL	2523	8463	16348	11455	13	38802	100.0	89.7
GRAND TOTAL						43263		100.0

TOP 25 CALLS FOR SERVICE BY NEIGHBOURHOOD: January – October, 2010

TYPE OF CALL FOR SERVICE	COLVILLE	DEVONSHIRE	DN1	ESQUIMALT VILLAGE	PANHANDLE	PARKLANDS	ROCKHEIGHTS	SAXE POINT	SELKIRK
THEFT	11	27		53	27	11	45	16	34
UNWANTED PERSON		4		68	5	2	13	11	17
PROPERTY ASSIST	3	7		43	8	2	18	18	16
POLICE/FIRE/AMBULANCE	8	15		58	15	6	20	15	32
CHECK WELLBEING	4	9		62	20	6	23	13	26
DISTURBANCE	8	25		88	15	6	34	21	42
ABANDONED 911	4	15		45	5	5	18	20	22
DOMESTIC IN PROGRESS	10	21		44	15	15	35	18	40
SUSPICIOUS PERSON	5	8		20	14	2	13	14	10
ASSIST GENERAL PUBLIC	3	4	1	48	10	8	32	13	20
OTHER CRIMINAL CODE	1	8		11	13	1	6	1	7
SIPP/DIPP	2	2		23	5		5	5	6
FIGHT	1	2	1	31	5	2	9	8	3
DRUGS		2		10	1	1	5	1	
IMPAIRED	5	7		36	21	3	11	6	16
SHOPLIFTER		1		23					
MISCHIEF	2	11		28	6	3	10	10	12
SUSPICIOUS CIRCUMSTANCES	2	4		26	12	3	13	10	8
ALARM		13		13	2	2	5		3
PARKING	5	6	2	33	7	3	10	9	4
TRAFFIC INCIDENT	4	5	1	9	17	2	14	3	3
BREACH	2	1		15	2	2	3	6	3
ASSAULT	3	7		31	4	1	4	4	10
BREAK AND ENTER	5	5		9	4	4	5	6	7
THREATS	1	3		26	8	1	16	8	13
Grand Total	138	312	9	1115	316	135	524	349	449

TOP 25 CALLS FOR SERVICE BY NEIGHBOURHOOD: January - October, 2010

TYPE OF CALL FOR SERVICE	WEST BAY	BURNSIDE GORGE	DOWNTOWN	FAIRFIELD	FERNWOOD	GONZALES	HARRIS GREEN	HILLSIDE QUADRA
THEFT	47	430	756	202	203	53	181	172
UNWANTED PERSON	57	302	789	180	183	9	396	97
PROPERTY ASSIST	29	218	722	152	83	25	89	78
POLICE/FIRE/AMBULANCE	76	281	477	117	109	23	178	80
CHECK WELLBEING	60	277	385	145	131	34	203	108
DISTURBANCE	86	171	179	167	217	55	79	157
ABANDONED 911	45	286	348	113	91	24	61	75
DOMESTIC IN PROGRESS	116	187	84	65	104	9	45	138
SUSPICIOUS PERSON	34	160	224	93	97	19	69	96
ASSIST GENERAL PUBLIC	33	159	214	51	58	27	49	62
OTHER CRIMINAL CODE	12	140	391	31	28	2	61	47
SIPP/DIPP	20	111	413	41	33	6	63	31
FIGHT	34	87	397	21	41	3	64	43
DRUGS	9	56	247	41	56	7	101	26
IMPAIRED	31	226	151	32	20	10	33	77
SHOPLIFTER	9	83	497	13	2	1	50	20
MISCHIEF	23	91	151	64	52	10	38	41
SUSPICIOUS CIRCUMSTANCES	22	116	111	55	47	12	53	53
ALARM	11	196	234	48	29	11	44	29
PARKING	7	65	119	84	80	17	36	72
TRAFFIC INCIDENT	12	135	125	51	30	5	39	74
BREACH	9	113	154	179	30	4	29	26
ASSAULT	24	84	224	17	33	4	42	28
BREAK AND ENTER	21	78	51	44	81	13	26	53
THREATS	26	72	74	48	34	8	30	33
Grand Total	1114	5561	9357	2683	2468	561	2594	2392

TOP 25 CALLS FOR SERVICE BY NEIGHBOURHOOD: January – October, 2010

TYPE OF CALL FOR SERVICE	JAMES BAY	NORTH JUBILEE	NORTH PARK	OAKLANDS	ROCKLAND	SOUTH JUBILEE	VIC WEST	UNKNOWN	Grand Total
THEFT	245	21	203	137	29	81	150		3140
UNWANTED PERSON	131	12	346	63	9	60	132		2888
PROPERTY ASSIST	148	19	449	78	16	24	96		2359
POLICE/FIRE/AMBULANCE	162	37	266	73	32	37	93		2216
CHECK WELLBEING	137	41	191	83	36	51	114		2162
DISTURBANCE	117	21	121	144	27	44	109		1937
ABANDONED 911	221	26	62	70	20	35	79		1692
DOMESTIC IN PROGRESS	115	12	65	53	11	6	93		1304
SUSPICIOUS PERSON	98	17	103	65	16	33	72		1284
ASSIST GENERAL PUBLIC	86	19	214	54	16	20	63		1271
OTHER CRIMINAL CODE	18	4	150	15		5	37		1083
SIPP/DIPP	32	5	94	12	3	21	27		986
FIGHT	31	5	63	23		4	24		905
DRUGS	15	4	256	11	5	6	23		891
IMPAIRED	30	13	47	50		12	46		888
SHOPLIFTER	50	1	9	28		25	72		884
MISCHIEF	61	18	74	57	15	13	55		852
SUSPICIOUS CIRCUMSTANCES	75	10	75	45	10	17	51		835
ALARM	24	11	28	34	19	17	32		806
PARKING	53	5	94	30	13	6	39		803
TRAFFIC INCIDENT	34	12	87	37	6	6	58		789
BREACH	23		111	8	3	11	13		752
ASSAULT	36	7	77	11	5	17	22		697
BREAK AND ENTER	67	21	27	49	14	9	32		631
THREATS	30	7	83	26	5	21	22		595
Grand Total	2692	499	4680	1693	430	889	2075		43316

