



## ARCHIVED - Archiving Content

### Archived Content

Information identified as archived is provided for reference, research or recordkeeping purposes. It is not subject to the Government of Canada Web Standards and has not been altered or updated since it was archived. Please contact us to request a format other than those available.

## ARCHIVÉE - Contenu archivé

### Contenu archivé

L'information dont il est indiqué qu'elle est archivée est fournie à des fins de référence, de recherche ou de tenue de documents. Elle n'est pas assujettie aux normes Web du gouvernement du Canada et elle n'a pas été modifiée ou mise à jour depuis son archivage. Pour obtenir cette information dans un autre format, veuillez communiquer avec nous.

This document is archival in nature and is intended for those who wish to consult archival documents made available from the collection of Public Safety Canada.

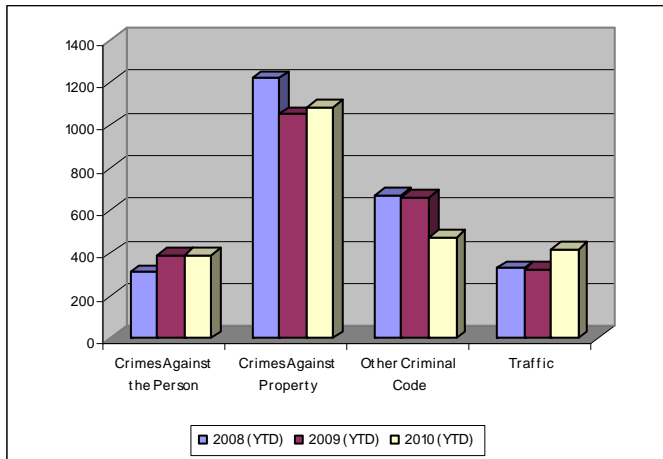
Some of these documents are available in only one official language. Translation, to be provided by Public Safety Canada, is available upon request.

Le présent document a une valeur archivistique et fait partie des documents d'archives rendus disponibles par Sécurité publique Canada à ceux qui souhaitent consulter ces documents issus de sa collection.

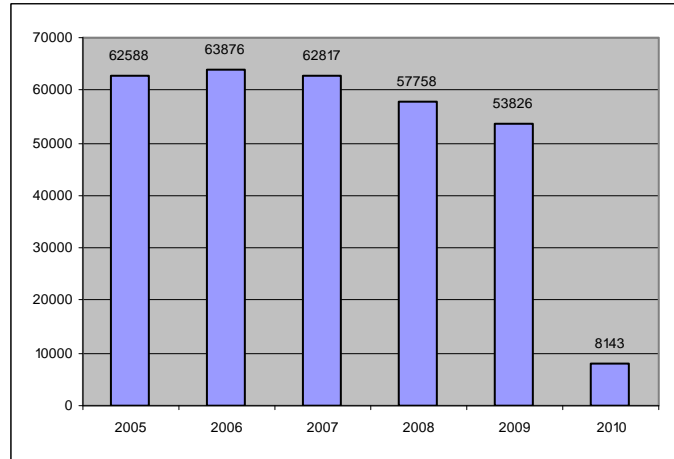
Certains de ces documents ne sont disponibles que dans une langue officielle. Sécurité publique Canada fournira une traduction sur demande.

## Crime Trends for Victoria and Esquimalt 2008 – 2010 <sup>(1,2)</sup> January to February

### Key Crime Trends



### Total Calls for Service (Annual)



### Key Crime Trends (January – February 28)

	2008		2009		2010		% Change 2009-2010 <sup>(4)</sup>
	Jan - Feb	Rate <sup>(3)</sup>	Jan - Feb	Rate	Jan - Feb	Rate	
<b>Crime Against the Person</b>	312	326.7	392	410.5	389	407.3	-0.8
<b>Crimes Against Property</b>	1223	1280.6	1054	1103.7	1087	1138.2	3.1
<b>Other Criminal Code of Canada Offences</b>	672	703.7	661	692.2	477	499.5	-27.8
<b>Total CCC Offences Excl. Traffic</b>	2207	2311.0	2107	2206.3	1953	2045.0	-7.3
<b>Traffic Offences</b>	329	344.5	327	342.4	419	438.7	28.1
<b>Total CCC Offences and Traffic</b>	2536	2655.5	2434	2548.7	2372	2483.8	-2.5

#### Notes:

1. The data presented are taken from the Police Records Information Management Environment (PRIME) database. Data are coded and analyzed according to the requirements of the violation coding structure for Uniform Crime Reporting (UCR) survey as set up by Statistics Canada.
2. The crime statistics published in this report are accurate on the day that they were analyzed. Due to ongoing police investigation and internal data quality control efforts, this information is subject to change, including addition, deletion and reclassification of any and all data. Rates and percentages have been rounded.
3. Rate is calculated on a per 100,000 rate for each month and year. As provided by the City of Victoria, the 2008 and 2009 population was 95,499.
4. The % change is based on the actual values and are subject to (2).

### Crimes Against Person (January – February)

	2008		2009		2010		% Change 2009-2010 <sup>(4)</sup>
	Jan - Feb	Rate <sup>(3)</sup>	Jan - Feb	Rate	Jan - Feb	Rate	
Homicide	0	0	0	0.0	0	0.0	-
Attempted Murder	0	0	1	1.0	1	1.0	-
Robbery	16	16.8	31	32.5	36	37.7	16.1
Assault	168	175.9	255	267.0	242	253.4	-5.1
Sexual Assault	15	15.7	11	11.5	31	32.5	181.8
Criminal Harassment	6	6.3	8	8.4	18	18.8	125.0
Uttering Threats	64	67.0	55	57.6	61	63.9	10.9
Arson - Disregard for Life	1	1.0	0	0.0	0	0	-

### Crimes Against Property (January – February)

	2008		2009		2010		% Change 2009-2010 <sup>(4)</sup>
	Jan - Feb	Rate <sup>(3)</sup>	Jan - Feb	Rate	Jan - Feb	Rate	
B&E Business	76	79.6	38	39.8	45	47.1	18.4
B&E-Other	46	48.2	36	37.7	33	34.6	-8.3
B&E-Residence	110	115.2	51	53.4	81	84.8	58.8
Fraud	85	89.0	65	68.1	63	66.0	-3.1
Possession of Stolen Property/Break and Enter Tools	38	39.8	35	36.6	22	23.0	-37.1
Theft Over \$5000	6	6.3	7	7.3	3	3.1	-57.1
Theft Under \$5000	182	190.6	200	209.4	183	191.6	-8.5
Theft from Motor Vehicle	411	430.4	314	328.8	370	387.4	17.8
Theft of Motor Vehicle	38	39.8	51	53.4	62	64.9	21.6
Take Vehicle without Consent	6	6.3	5	5.2	3	3.1	-40.0
Theft of Bicycle	45	47.1	48	50.3	42	44.0	-12.5
Shoplifting	176	184.3	198	207.3	175	183.2	-11.6
Arson	4	4.2	6	6.3	5	5.2	-16.7

### Other Criminal Code Offences (January – February)

	2008		2009		2010		% Change 2009-2010 <sup>(4)</sup>
	Jan - Feb	Rate <sup>(3)</sup>	Jan - Feb	Rate	Jan - Feb	Rate	
Bail Violations/Breach of Probation	71	74.3	109	114.1	94	98.4	-13.8
Counterfeit Currency	24	25.1	20	20.9	7	7.3	-65.0
Drugs	144	150.8	120	125.7	83	86.9	-30.8
Indecent Acts	6	6.3	12	12.6	7	7.3	-
Mischief	330	345.6	370	387.4	259	271.2	-30.0
Offensive Weapons	34	35.6	29	30.4	27	28.3	-6.9

### Traffic Offences (January – February)

	2008		2009		2010		% Change 2009-2010 <sup>(4)</sup>
	Jan - Feb	Rate <sup>(3)</sup>	Jan - Feb	Rate	Jan - Feb	Rate	
Traffic - Collisions	131	137.2	120	125.7	138	144.5	15.0
Traffic - Fatal	0	0.0	0	0.0	0	0.0	n/c
Traffic - Other	75	78.5	64	67.0	142	148.7	121.9
Dangerous Operation of Motor Vehicle	15	15.7	21	22.0	7	7.3	-66.7
Fail to Remain	48	50.3	54	56.5	21	22.0	-61.1
Impaired/Refuse	60	62.8	68	71.2	62	64.9	-8.8

### Calls for Service (January – December 31)

	2008				2009				2010				% Change '00-'10 <sup>(4)</sup>
	Vic	% of Total	Esq	% of Total	Vic	% of Total	Esq	% of Total	Vic	% of Total	Esq	% of Total	
<b>Priority 1:</b> Emergency, dispatch immediate, high probability of death or grievous bodily harm	<b>363</b>	84.6	<b>66</b>	15.4	<b>407</b>	85.3	<b>70</b>	14.7	<b>477</b>	83.0	<b>98</b>	17.0	<b>20.5</b>
<b>Priority 2:</b> Urgent, dispatch immediate, not life threatening in nature	<b>1469</b>	89.6	<b>170</b>	10.4	<b>1488</b>	89.2	<b>180</b>	10.8	<b>1569</b>	88.7	<b>199</b>	11.3	<b>6.0</b>
<b>Priority 3:</b> Routine: non-urgent	<b>3251</b>	91.2	<b>312</b>	8.8	<b>3268</b>	90.7	<b>337</b>	9.3	<b>3127</b>	90.7	<b>322</b>	9.3	<b>-4.3</b>
<b>Priority 4:</b> May or may not be dispatched, dependant on agency	<b>2511</b>	91.7	<b>228</b>	8.3	<b>2237</b>	91.3	<b>214</b>	8.7	<b>2139</b>	91.6	<b>196</b>	8.4	<b>-4.7</b>
<b>Other</b> Alternative	<b>9</b>	0.0	<b>0</b>	100.0	<b>6</b>	100.0	<b>0</b>	0.0	<b>0</b>	-	<b>0</b>	-	-
<b>Total - All Priorities</b>	<b>7603</b>	90.7	<b>776</b>	9.3	<b>7406</b>	90.2	<b>801</b>	9.8	<b>7312</b>	90.0	<b>815</b>	10.0	<b>-1.0</b>

## Calls for Service by Priority and Neighbourhood: January – February 28, 2010

Neighbourhood	Priority 1	Priority 2	Priority 3	Priority 4	Other	Total	% of Total City	% of Grand Total
ESQUIMALT VILLAGE	15	57	84	47		203	25.8	2.5
WEST BAY	35	55	77	36		203	25.8	2.5
ROCKHEIGHTS	11	12	48	21		92	11.7	1.1
SELKIRK	10	22	28	18		78	9.9	1.0
SAXE POINT	7	9	20	14		50	6.3	0.6
DEVONSHIRE	10	15	22	13		60	7.6	0.7
PANHANDLE	10	15	22	13		60	7.2	0.7
COLVILLE	4	8	11	4		27	3.4	0.3
PARKLANDS	11	12	48	21		92	2.3	0.2
DND Base	0	0	0	0		0	-	-
TANK FARM	0	0	0	0		0	-	-
<b>TOTAL ESQUIMALT</b>	<b>98</b>	<b>199</b>	<b>322</b>	<b>169</b>		<b>788</b>	<b>100.0</b>	

DOWNTOWN	71	403	725	551		1750	23.9	21.5
BURNSIDE	90	298	457	298		1143	15.6	14.0
NORTH PARK	40	140	408	362		950	13.0	11.7
HARRIS GREEN	37	104	238	124		503	6.9	6.2
FAIRFIELD	30	82	186	168		466	6.4	5.7
HILLSIDE QUADRA	35	73	204	114		426	5.8	5.2
FERNWOOD	34	93	197	112		436	6.0	5.4
JAMES BAY	53	110	161	117		441	6.0	5.4
VIC WEST	27	96	170	102		395	5.4	4.9
OAKLANDS	19	78	133	85		315	4.3	3.9
SOUTH JUBILEE	13	37	97	43		190	2.6	2.3
GONZALES	7	19	40	28		94	1.3	1.2
UNKNOWN	1		20	5		26	0.4	0.3
NORTH JUBILEE	7	19	48	18		92	1.3	1.1
ROCKLAND	13	17	43	12		85	1.2	1.0
<b>TOTAL VICTORIA</b>	<b>477</b>	<b>1569</b>	<b>3127</b>	<b>2139</b>		<b>7312</b>	<b>100.0</b>	<b>99.5</b>
<b>GRAND TOTAL</b>	<b>578</b>	<b>1776</b>	<b>3470</b>	<b>2319</b>		<b>8143</b>		

**TOP 25 CALLS FOR SERVICE BY NEIGHBOURHOOD: January – February 2010**

TYPE OF CALL FOR SERVICE	COLVILLE	DEVONSHIRE	DND Base	ESQUIMALT VILLAGE	PANHANDL E	PARKLANDS	ROCKHEIGHTS	SAXE POINT
THEFT		8	2	15	3	1	6	5
UNWANTED PERSON				13	1		5	1
CHECK WELLBEING		1	1	12	3	1	4	1
PROPERTY			2	5	2	1	3	3
ASSIST POLICE/FIRE/AMBULANCE	1	4		10	3	2	2	1
DISTURBANCE		4		8	1		10	
ABANDONED 911	2	3		8	1		3	3
ASSIST GENERAL PUBLIC	1	1		9	4		2	3
SUSPICIOUS PERSON	3	1	2	5	2	1	4	3
DOMESTIC IN PROGRESS	2	8	1	3	3		8	4
OTHER CRIMINAL CODE		3	1		4			
IMPAIRED	2	2	2	7	5	1	1	1
SIPP/DIPP			1	2			1	1
SUSPICIOUS CIRCUMSTANCES		1		6	3			4
MISCHIEF		2	1	7			2	2
ALARM			2	8		1	4	
BREACH	2	1		3	1		1	
TRAFFIC INCIDENT	1			1	3	1	5	1
SHOPLIFTER			1	2				
BREAK AND ENTER	1		4	3		1	1	
FIGHT	1	1		5	1	1	2	1
INTELLIGENCE INFORMATION				1			2	1
PARKING				3	2		1	
THREATS	1		1	7	1			2
ASSAULT	1	2		8	1		1	1
Grand Total	27	60		203	57	18	92	50

**TOP 25 CALLS FOR SERVICE BY NEIGHBOURHOOD: January – February, 2010**

TYPE OF CALL FOR SERVICE	SELKIRK	TANK FARM	WEST BAY	BURNSIDE	FAIRFIELD	FERNWOOD	GONZALES	HARRIS GREEN	HILLSIDE QUADRA	JAMES BAY
THEFT	7		6	83	38	36	10	45	27	48
UNWANTED PERSON	4		8	61	30	33	2	90	12	24
CHECK WELLBEING	4		11	52	31	15	4	35	32	24
PROPERTY	2		4	39	25	18	4	13	14	23
ASSIST POLICE/FIRE/AMBULANCE	4		15	47	15	19	7	31	9	25
DISTURBANCE	6		7	32	21	30	9	20	24	18
ABANDONED 911	6		10	54	21	20	5	4	15	33
ASSIST GENERAL PUBLIC	2		7	31	8	19	4	11	17	18
SUSPICIOUS PERSON	1		7	26	19	18	4	16	14	6
DOMESTIC IN PROGRESS	7		24	38	13	19	4	5	15	25
OTHER CRIMINAL CODE	1			36	6	6		9	5	3
IMPAIRED	4		10	54	5	4	2	7	12	5
SIPP/DIPP	1		6	21	7	5		18	3	3
SUSPICIOUS CIRCUMSTANCES	2		3	30	13	18	3	14	9	10
MISCHIEF	2		5	29	10	5	2	6	8	8
ALARM			3	39	8	5	2	4	11	2
BREACH			1	28	40	4	2	4	4	3
TRAFFIC INCIDENT	1		4	34	11	6	2	9	9	4
SHOPLIFTER				24	4	1	1	2	5	10
BREAK AND ENTER	3		5	24	9	14	4	5	15	10
FIGHT	1		7	19	2	6		6	4	6
INTELLIGENCE INFORMATION			2	7		7	1	7	8	6
PARKING	1		1	10	11	11	2	7	10	6
THREATS	2		7	16	9	9	2	5	9	6
ASSAULT	1		4	12	1	7		5	4	7
Grand Total	78		203	1143	466	436	94	503	426	441

### TOP 25 CALLS FOR SERVICE BY NEIGHBOURHOOD: January – February, 2010

TYPE OF CALL FOR SERVICE	NORTH JUBILEE	NORTH PARK	OAKLANDS	ROCKLAND	SOUTH JUBILEE	VIC WEST	DOWNTOWN	UNKNOWN	GRAND TOTAL
THEFT	3	49	18	3	10	18	162		603
UNWANTED PERSON	2	97	13		16	17	130		559
CHECK WELLBEING	10	32	19	10	17	25	92		436
PROPERTY	2	97	14	1	4	22	110		406
ASSIST POLICE/FIRE/MBULANCE	5	52	14	8	12	23	92		404
DISTURBANCE	8	22	13	5	8	18	26		290
ABANDONED 911	5	8	17	6		20	37		281
ASSIST GENERAL PUBLIC	3	37	16	5	4	13	44		261
SUSPICIOUS PERSON		18	15	3	7	18	51	2	247
DOMESTIC IN PROGRESS	3	12	9	1		15	13		232
OTHER CRIMINAL CODE	2	32	3			2	77	17	210
IMPAIRED	2	5	13		3	13	35		194
SIPP/DIPP		25	2		6	4	77	2	184
SUSPICIOUS CIRCUMSTANCES	2	14	12	3	2	12	18		183
MISCHIEF	5	17	12	1	3	10	35		172
ALARM	5	8	4	5	5	11	44		170
BREACH		18	3	1	3	4	30		157
TRAFFIC INCIDENT	2	18	7	2	2	8	23		156
SHOPLIFTER		1	5		6	10	84		155
BREAK AND ENTER	5	8	12	3	1	6	22		152
FIGHT	1	14	4		1	5	63		151
INTELLIGENCE INFORMATION	1	55	7	2	1	9	17		135
PARKING	2	20	7	1	2	9	25		131
THREATS	2	18	6	1	2	4	16		126
ASSAULT		15	1		2		48		121
<b>GRAND TOTAL</b>	92	950	315	85	190	395	1750	26	8143