



## ARCHIVED - Archiving Content

### Archived Content

Information identified as archived is provided for reference, research or recordkeeping purposes. It is not subject to the Government of Canada Web Standards and has not been altered or updated since it was archived. Please contact us to request a format other than those available.

## ARCHIVÉE - Contenu archivé

### Contenu archivé

L'information dont il est indiqué qu'elle est archivée est fournie à des fins de référence, de recherche ou de tenue de documents. Elle n'est pas assujettie aux normes Web du gouvernement du Canada et elle n'a pas été modifiée ou mise à jour depuis son archivage. Pour obtenir cette information dans un autre format, veuillez communiquer avec nous.

This document is archival in nature and is intended for those who wish to consult archival documents made available from the collection of Public Safety Canada.

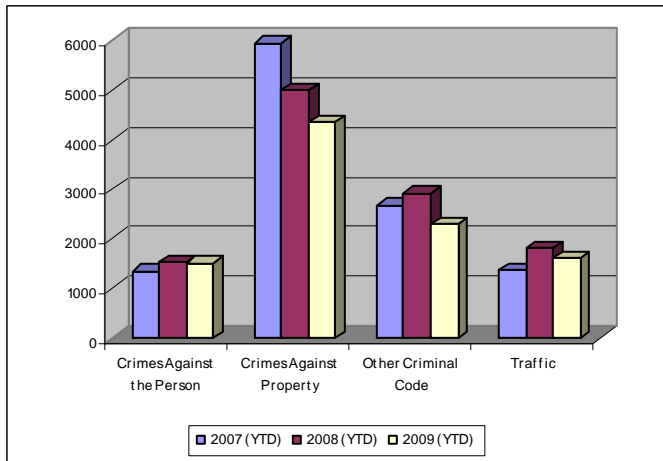
Some of these documents are available in only one official language. Translation, to be provided by Public Safety Canada, is available upon request.

Le présent document a une valeur archivistique et fait partie des documents d'archives rendus disponibles par Sécurité publique Canada à ceux qui souhaitent consulter ces documents issus de sa collection.

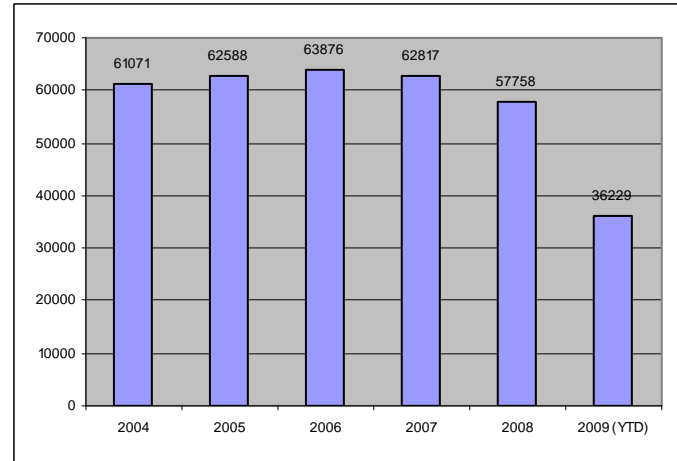
Certains de ces documents ne sont disponibles que dans une langue officielle. Sécurité publique Canada fournira une traduction sur demande.

## Crime Trends for Victoria and Esquimalt : January to August 31, 2007 – 2009 (1,2)

Key Crime Trends



Total Calls for Service (Annual)



### Key Crime Trends (YTD- January – August 31)

	2007		2008		2009		% Change 2008 - 2009(4)
	Jan - Aug	Rate (3)	Jan - Aug	Rate	Jan - Aug	Rate	
Crime Against the Person	1348	1411.5	1528	1600.0	1520	1591.6	-0.5
Crimes Against Property	5934	6213.7	4984	5218.9	4356	4561.3	-12.6
Other Criminal Code of Canada Offences	2682	2808.4	2913	3050.3	2306	2414.7	-20.8
Total CCC Offences Exclud. Traffic	9964	10433.6	9425	9869.2	8182	8567.6	-13.2
Traffic Offences	1372	1436.7	1809	1894.3	1614	1690.1	-10.8
Total CCC Offences and Traffic	11336	11870.3	11234	11763.5	9796	10257.7	-12.8

#### Notes:

1. The data presented is taken from the Police Records Information Management Environment (PRIME) database. Data that is coded and analyzed according to the requirements of the violation coding structure for Uniform Crime Reporting (UCR) survey as set up by Statistics Canada.
2. The crime statistics published in this report are accurate on the day that they were analyzed. Due to ongoing police investigation and internal data quality control efforts, this information is subject to change, including addition, deletion and reclassification of any and all data. Rates and percentages have been rounded.
3. Rate is calculated on a per 100,000 rate for each month and year. As provided by the City of Victoria, the 2008 and 2009 population was 95,499.
4. The % change is based on the actual values and are subject to (2).

Crimes Against Person (YTD January – August 31)

	2007		2008		2009		% Change 2008 - 2009(4)
	Jan - Aug	Rate (3)	Jan - Aug	Rate	Jan - Aug	Rate	
Homicide	0	0	1	0	1	1.0	-
Attempted Murder	0	0	1	0	2	0	-
Robbery	119	124.6	136	142.4	134	140.3	-1.5
Assault	883	924.6	992	1038.8	1036	1084.8	4.4
Sexual Assault	74	77.5	71	74.3	65	68.1	-8.5
Criminal Harassment	26	27.2	46	48.2	34	35.6	-26.1
Uttering Threats	243	254.5	277	290.1	248	259.7	-10.5
Arson - Disregard for Life	3	3.1	4	4.2	0	0	-100.0

Crimes Against Property (YTD January – August 31)

	2007		2008		2009		% Change 2008 - 2009(4)
	Jan - Aug	Rate (3)	Jan - Aug	Rate	Jan - Aug	Rate	
B&E Business	331	346.6	247	258.6	128	134.0	-48.2
B&E-Other	147	153.9	145	151.8	92	96.3	-36.6
B&E-Residence	469	491.1	507	530.9	261	273.3	-48.5
Fraud	356	372.8	336	351.8	255	267.0	-24.1
Possession of Stolen Property/Break and Enter Tools	229	239.8	155	162.3	126	131.9	-18.7
Theft Over \$5000	19	19.9	22	23.0	21	22.0	-4.5
Theft Under \$5000	1056	1105.8	859	899.5	915	958.1	6.5
Theft from Motor Vehicle	1781	1864.9	1357	1421.0	1250	1308.9	-7.9
Theft of Motor Vehicle	403	422.0	310	324.6	289	302.6	-6.8
Take Vehicle without Consent	23	24.1	34	35.6	12	12.6	-64.7
Theft of Bicycle	349	365.4	327	342.4	274	286.9	-16.2
Shoplifting	746	781.2	656	686.9	705	738.2	7.5
Arson	24	25.1	29	30.4	28	29.3	-3.4

Other Criminal Code Offences (YTD January – August 31)

	2007		2008		2009		% Change 2008 - 2009(4)
	Jan - Aug	Rate (3)	Jan - Aug	Rate	Jan - Aug	Rate	
Bail Violations/Breach of Probation	569	595.8	477	499.5	445	466.0	-6.7
Counterfeit Currency	149	156.0	65	68.1	56	58.6	-13.8
Drugs	595	623.0	652	682.7	433	453.4	-33.6
Indecent Acts	46	48.2	30	31.4	63	66.0	110.0
Mischief	1169	1224.1	1557	1630.4	1191	1247.1	-23.5
Offensive Weapons	149	156.0	132	138.2	111	116.2	-15.9

Traffic Offences (YTD January – Aug 31)

	2007		2008		2009		% Change 2008 - 2009(4)
	Jan - Aug	Rate (3)	Jan - Aug	Rate	Jan - Aug	Rate	
Traffic - Collisions	564	590.6	558	584.3	525	549.7	-5.9
Traffic - Fatal	0	0.0	1	1.0	0	0.0	n/c
Traffic - Other	676	707.9	670	701.6	681	713.1	1.6
Dangerous Operation of Motor Vehicle	21	22.0	64	67.0	22	23.0	-65.6
Fail to Remain	251	262.8	239	250.3	142	148.7	-40.6
Impaired/Refuse	179	187.4	277	290.1	244	255.5	-11.9

Calls fro Service (YTD January – Aug 31, 2009)

	2007				2008				2009				% Change '08- '09(4)
	Vic	% of Total	Esq	% of Total	Vic	% of Total	Esq	% of Total	Vic	% of Total	Esq	% of Total	
<b>Priority 1:</b> Emergency, dispatch immediate, high probability of death or grievous bodily harm	1622	84.1	306	16	1741	85.3	301	14.7	1980	85.7	330	14.3	13.1
<b>Priority 2:</b> Urgent, dispatch immediate, not life threatening in nature	6606	88.6	848	11.4	6682	90.2	728	9.8	6705	89	830	11	1.7
<b>Priority 3:</b> Routine: non- urgent	16739	89.8	1911	10.2	15467	91.7	1392	8.2	14376	90.3	1541	9.7	-5.6
<b>Priority 4:</b> May or may not be dispatched, dependant on agency	13249	92	1146	8	11434	92.6	920	7.5	9425	91.2	907	8.8	-16.4
Other Alternative	50	88	7	12	44	92	4	8.3	44	95.7	2	4.4	-4.2
Total - All Priorities	38266	90	4218	10.2	35368	91.4	3345	8.6	32530	90	3610	10	-6.6

Calls for Service by Priority and Neighbourhood: January – August 31, 2009

<b>Neighbourhood</b>	<b>Priority 1</b>	<b>Priority 2</b>	<b>Priority 3</b>	<b>Priority 4</b>	<b>Other</b>	<b>Total</b>	<b>% of Total City</b>	<b>% of Grand total</b>
ESQUIMALT VILLAGE	97	244	358	218	1	918	25.4	2.5
WEST BAY	82	214	404	195	0	895	24.8	2.5
SAXE POINT	19	50	172	97	0	338	9.4	0.9
SELKIRK	37	72	131	99	1	340	9.4	0.9
ROCKHEIGHTS	25	84	144	81	0	334	9.2	0.9
DEVONSHIRE	21	54	129	83	0	287	8.0	0.8
PANHANDLE	20	62	126	57	0	265	7.3	0.7
PARKLANDS	17	22	28	32	0	99	2.7	0.3
COLVILLE	9	23	38	35	0	105	2.9	0.3
DND Base	3	5	9	10	0	27	1.0	0.1
TANK FARM			2		0	2	0.1	0.0
<b>TOTAL ESQUIMALT</b>	<b>330</b>	<b>830</b>	<b>1541</b>	<b>907</b>	<b>2</b>	<b>3610</b>	<b>100.2</b>	<b>10.0</b>
DOWNTOWN	344	1867	3485	2698	5	8399	25.8	23.2
BURNSIDE	341	1076	1980	1290	7	4694	14.4	13.0
NORTH PARK	160	636	2267	1413	10	4486	13.8	12.4
HARRIS GREEN	125	463	994	586	1	2169	6.7	6.0
FAIRFIELD	128	419	837	667	3	2054	6.3	5.7
HILLSIDE QUADRA	175	441	921	457	4	1998	6.1	5.5
FERNWOOD	181	386	883	503	3	1956	6.0	5.4
JAMES BAY	158	441	786	549	1	1935	5.9	5.3
VIC WEST	138	324	699	421	2	1584	4.9	4.4
OAKLANDS	114	275	653	351	3	1396	4.3	3.9
SOUTH JUBILEE	37	150	360	227	0	774	2.4	2.1
GONZALES	13	81	209	122	4	429	1.3	1.2
UNKNOWN	4	14	174	121		313	1.1	1.0
NORTH JUBILEE	39	91	162	57	1	350	1.1	1.0
ROCKLAND	27	54	138	84	0	303	0.9	0.8
<b>TOTAL VICTORIA</b>	<b>1980</b>	<b>6705</b>	<b>14374</b>	<b>9425</b>	<b>44</b>	<b>32528</b>	<b>100.0</b>	<b>89.9</b>
Grand Total	2323	7567	15954	10339	46	36229		

**TOP 25 CALLS FOR SERVICE BY NEIGHBOURHOOD: JANUARY - AUGUST 31, 2009**

TYPE OF CALL FOR SERVICE	COLVILLE	DEVONSHIRE	DND Base	ESQUIMALT VILLAGE	PANHANDLE	PARKLANDS	ROCKHEIGHTS	SAXE POINT
THEFT	9	23	2	72	24	12	20	37
UNWANTED PERSON	3	7		45	9	1	10	9
ASSIST POLICE/FIRE/AMBULANCE	2	12	2	51	10	7	23	11
PROPERTY	8	9	1	29	6	3	15	13
CHECK WELLBEING	4	9		38	14	5	18	9
DISTURBANCE	5	40		49	13	3	32	28
ASSIST GENERAL PUBLIC	3	9		56	5	6	16	15
MISCHIEF	4	19	1	49	7	6	29	11
DOMESTIC	3	13	1	62	9	10	16	12
SUSPICIOUS PERSON	2	6		23	12	3	13	17
MVI	8	3	2	19	17	7	18	4
ASSIST OTHER AGENCY	2	4	1	18	3	1	1	6
INTOXICATED IN PUBLIC		2	1	17	4	2	4	6
OTHER CRIMINAL CODE	1	5		6	4		5	1
FIGHT	2	6	1	39	4		5	4
ASSAULT	3	7		28	7		3	6
SHOPLIFTER		2		19				
DRUGS	2		1	9	4		1	3
SUSPICIOUS CIRCUMSTANCES	5	10	2	19	11	2	7	13
ALARM	4	6	4	20	4	1	4	2
IMPAIRED	4	6		19	19	5	8	5
BREAK AND ENTER	4	9		16	5	1	4	14
ABANDONED 911	2	5		20	4		8	5
TRAFFIC INCIDENT		4		10	9	1	7	2
PARKING	4	9		14	8	3	9	4
Grand Total	105	287	27	918	265	99	334	338

**TOP 25 CALLS FOR SERVICE BY NEIGHBOURHOOD: JANUARY - AUGUST 31, 2009**

TYPE OF CALL FOR SERVICE	SELKIRK	TANK FARM	WEST BAY	BURNSIDE	FAIRFIELD	FERNWOOD	GONZALES	HARRIS GREEN	HILLSIDE QUADRA	JAMES BAY
THEFT	26		70	404	188	155	35	204	105	164
UNWANTED PERSON	13	2	42	289	136	187	9	394	95	84
ASSIST POLICE/FIRE/AMBULANCE	21		58	235	104	98	16	158	100	135
PROPERTY	16		25	201	106	49	23	70	74	127
CHECK WELLBEING	21		49	260	112	92	25	148	93	102
DISTURBANCE	19		81	162	112	177	48	56	135	115
ASSIST GENERAL PUBLIC	11		28	143	67	58	16	51	65	63
MISCHIEF	22		37	100	79	63	32	58	57	84
DOMESTIC	27		43	151	60	118	4	45	114	79
SUSPICIOUS PERSON	5		20	146	86	80	13	51	84	72
MVI	9		15	201	66	46	9	71	79	56
ASSIST OTHER AGENCY	2		8	63	20	25	3	14	20	24
INTOXICATED IN PUBLIC	2		11	99	42	41	3	85	21	27
OTHER CRIMINAL CODE	2		8	164	33	13	3	48	47	21
FIGHT	5		25	96	22	33	2	42	35	22
ASSAULT	6		28	102	33	31	5	53	29	33
SHOPLIFTER	1		9	60	7		3	15	63	20
DRUGS	2		7	65	18	24	1	81	36	8
SUSPICIOUS CIRCUMSTANCES	9		15	115	49	54	15	40	59	51
ALARM	4		22	138	34	29	10	35	23	35
IMPAIRED	8		36	165	35	19	3	20	59	20
BREAK AND ENTER	11		16	86	49	74	14	33	46	57
ABANDONED 911	9		11	99	52	43	11	19	41	61
TRAFFIC INCIDENT	3		8	102	31	18	4	23	47	30
PARKING	18		12	40	45	63	6	30	49	38
Grand Total	340	2	895	4694	2054	1956	429	2169	1998	1935

**TOP 25 CALLS FOR SERVICE BY NEIGHBOURHOOD: JANUARY - AUGUST 31, 2009**

TYPE OF CALL FOR SERVICE	NORTH JUBILEE	NORTH PARK	OAKLANDS	ROCKLAND	SOUTH JUBILEE	VIC WEST	DOWNTOWN	UNKNOWN	Grand Total
THEFT	25	164	101	27	45	125	891		2932
UNWANTED PERSON	14	325	55	19	55	76	788		2667
ASSIST POLICE/FIRE/AMBULANCE	18	251	51	14	44	78	436		1949
PROPERTY	7	354	71	18	24	67	566		1883
CHECK WELLBEING	31	176	66	14	29	86	358		1762
DISTURBANCE	18	93	130	18	41	93	162		1631
ASSIST GENERAL PUBLIC	9	236	51	7	26	64	272		1277
MISCHIEF	11	92	57	10	36	65	217		1147
DOMESTIC	20	79	49	19	12	76	66		1091
SUSPICIOUS PERSON	15	91	46	14	14	52	197		1063
MVI	22	75	80	8	29	50	159		1058
ASSIST OTHER AGENCY	5	620	13	2	22	13	67		960
INTOXICATED IN PUBLIC	4	82	11		27	35	426		952
OTHER CRIMINAL CODE	2	165	11	2	3	31	310		895
FIGHT	3	63	17		9	22	369		827
ASSAULT	11	81	17	3	14	26	296		826
SHOPLIFTER		1	68		18	73	441		800
DRUGS	2	235	4	1	4	16	252		776
SUSPICIOUS CIRCUMSTANCES	14	61	40	8	15	43	109		770
ALARM	12	22	26	12	15	19	194		680
IMPAIRED	14	30	44	2	11	32	115	1	680
BREAK AND ENTER	8	36	24	7	8	36	74		637
ABANDONED 911	13	26	25	7	11	43	88		603
TRAFFIC INCIDENT	5	63	28	4	9	33	123		567
PARKING	8	39	31	10	4	20	90		554
Grand Total	350	4486	1396	303	774	1584	8401	1	36229