



ARCHIVED - Archiving Content

Archived Content

Information identified as archived is provided for reference, research or recordkeeping purposes. It is not subject to the Government of Canada Web Standards and has not been altered or updated since it was archived. Please contact us to request a format other than those available.

ARCHIVÉE - Contenu archivé

Contenu archivé

L'information dont il est indiqué qu'elle est archivée est fournie à des fins de référence, de recherche ou de tenue de documents. Elle n'est pas assujettie aux normes Web du gouvernement du Canada et elle n'a pas été modifiée ou mise à jour depuis son archivage. Pour obtenir cette information dans un autre format, veuillez communiquer avec nous.

This document is archival in nature and is intended for those who wish to consult archival documents made available from the collection of Public Safety Canada.

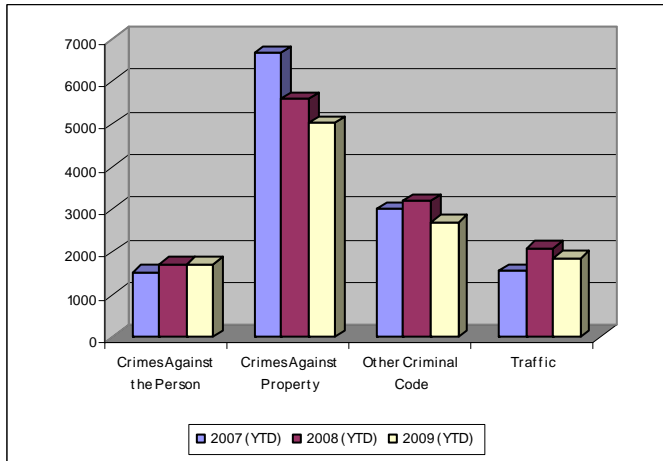
Some of these documents are available in only one official language. Translation, to be provided by Public Safety Canada, is available upon request.

Le présent document a une valeur archivistique et fait partie des documents d'archives rendus disponibles par Sécurité publique Canada à ceux qui souhaitent consulter ces documents issus de sa collection.

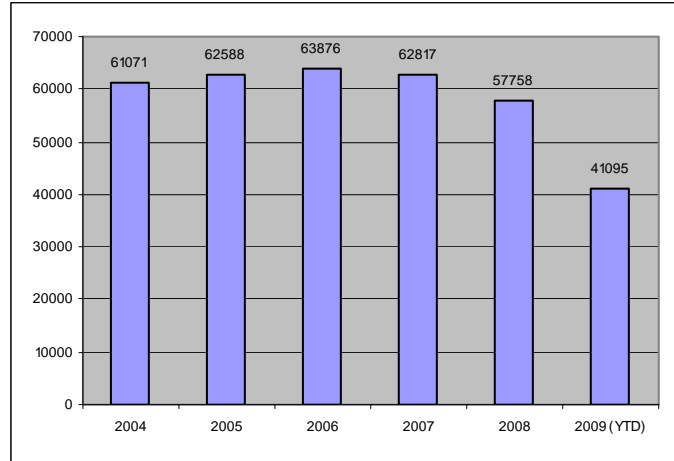
Certains de ces documents ne sont disponibles que dans une langue officielle. Sécurité publique Canada fournira une traduction sur demande.

Crime Trends for Victoria and Esquimalt : January to September 30, 2007 – 2009 (1,2)

Key Crime Trends



Total Calls for Service (Annual)



Key Crime Trends (YTD- January – September 30)

	2007		2008		2009		% Change 2008 - 2009(4)
	Jan - Sep	Rate (3)	Jan - Sep	Rate	Jan - Sep	Rate	
Crime Against the Person	1520	1591.6	1723	1804.2	1729	1810.5	0.3
Crimes Against Property	6667	6981.2	5578	5840.9	5022	5258.7	-10.0
Other Criminal Code of Canada Offences	3017	3159.2	3191	3341.4	2695	2822.0	-15.5
Total CCC Offences Exclud. Traffic	11204	11732.1	10492	10986.5	9446	9891.2	-10.0
Traffic Offences	1545	1617.8	2081	2179.1	1867	1955.0	-10.3
Total CCC Offences and Traffic	12749	13349.9	12573	13165.6	11313	11846.2	-10.0

Notes:

1. The data presented is taken from the Police Records Information Management Environment (PRIME) database. Data that is coded and analyzed according to the requirements of the violation coding structure for Uniform Crime Reporting (UCR) survey as set up by Statistics Canada.
2. The crime statistics published in this report are accurate on the day that they were analyzed. Due to ongoing police investigation and internal data quality control efforts, this information is subject to change, including addition, deletion and reclassification of any and all data. Rates and percentages have been rounded.
3. Rate is calculated on a per 100,000 rate for each month and year. As provided by the City of Victoria, the 2008 and 2009 population was 95,499.
4. The % change is based on the actual values and are subject to (2).

Crimes Against Person (YTD- January – September 30)

	2007		2008		2009		% Change 2008 - 2009(4)
	Jan - Sep	Rate (3)	Jan - Sep	Rate	Jan - Sep	Rate	
Homicide	0	0	1	0	1	1.0	-
Attempted Murder	0	0	1	0	3	3.1	-
Robbery	134	140.3	147	153.9	162	169.6	10.2
Assault	992	1038.8	1123	1175.9	1169	1224.1	4.1
Sexual Assault	83	86.9	79	82.7	70	73.3	-11.4
Criminal Harassment	26	27.2	56	58.6	42	44.0	-25.0
Uttering Threats	280	293.2	310	324.6	281	294.2	-9.4
Arson - Disregard for Life	3	3.1	4	4.2	1	1.0471	-75.0

Crimes Against Property (YTD- January – September 30)

	2007		2008		2009		% Change 2008 - 2009(4)
	Jan - Sep	Rate (3)	Jan - Sep	Rate	Jan - Sep	Rate	
B&E Business	377	394.8	276	289.0	159	166.5	-42.4
B&E-Other	170	178.0	178	186.4	113	118.3	-36.5
B&E-Residence	534	559.2	544	569.6	307	321.5	-43.6
Fraud	396	414.7	384	402.1	316	330.9	-17.7
Possession of Stolen Property/Break and Enter Tools	261	273.3	171	179.1	143	149.7	-16.4
Theft Over \$5000	22	23.0	21	22.0	26	27.2	23.8
Theft Under \$5000	1163	1217.8	962	1007.3	1034	1082.7	7.5
Theft from Motor Vehicle	1989	2082.7	1502	1572.8	1427	1494.3	-5.0
Theft of Motor Vehicle	462	483.8	354	370.7	324	339.3	-8.5
Take Vehicle without Consent	28	29.3	36	37.7	16	16.8	-55.6
Theft of Bicycle	401	419.9	370	387.4	317	331.9	-14.3
Shoplifting	830	869.1	745	780.1	809	847.1	8.6
Arson	33	34.6	34	35.6	29	30.4	-14.7

Other Criminal Code Offences (YTD January – September 30)

	2007		2008		2009		% Change 2008 - 2009(4)
	Jan - Sep	Rate (3)	Jan - Sep	Rate	Jan - Sep	Rate	
Bail Violations/Breach of Probation	641	671.2	521	545.6	501	524.6	-3.8
Counterfeit Currency	161	168.6	72	75.4	66	69.1	-8.3
Drugs	694	726.7	714	747.7	504	527.8	-29.4
Indecent Acts	48	50.3	33	34.6	68	71.2	106.1
Mischief	1313	1374.9	1703	1783.3	1427	1494.3	-16.2
Offensive Weapons	160	167.5	148	155.0	129	135.1	-12.8

Traffic Offences (YTD January – September 30)

	2007		2008		2009		% Change 2008 - 2009(4)
	Jan - Sep	Rate (3)	Jan - Sep	Rate	Jan - Sep	Rate	
Traffic - Collisions	644	674.4	627	656.6	622	651.3	-0.8
Traffic - Fatal	1	1.0	1	1.0	1	1.0	n/c
Traffic - Other	689	721.5	811	849.2	769	805.2	-5.2
Dangerous Operation of Motor Vehicle	20	20.9	69	72.3	35	36.6	-49.3
Fail to Remain	290	303.7	272	284.8	167	174.9	-38.6
Impaired/Refuse	193	202.1	299	313.1	273	285.9	-8.7

Calls fro Service (YTD January – September 30, 2009)

	2007				2008				2009				% Change '08- '09(4)
	Vic	% of Total	Esq	% of Total	Vic	% of Total	Esq	% of Total	Vic	% of Total	Esq	% of Total	
Priority 1: Emergency, dispatch immediate, high probability of death or grievous bodily harm	1828	83.9	350	16	1954	85.7	327	14.3	2260	85.7	378	14.3	15.7
Priority 2: Urgent, dispatch immediate, not life threatening in nature	7574	88.6	973	11.4	7539	89.9	844	10.1	7602	89.2	919	10.8	1.6
Priority 3: Routine: non- urgent	18890	89.8	2148	10.2	17763	91.9	1562	8.1	16249	90.2	1763	9.8	-6.8
Priority 4: May or may not be dispatched, dependant on agency	14836	92	1289	8	13051	92.6	1043	7.5	10763	91.4	1014	8.6	-16.4
Other Alternative	55	88.7	7	11.3	49	89.1	6	10.9	50	94.3	3	5.7	-3.6
Total - All Priorities	43183	90	4767	10.2	40356	91.4	3782	8.6	36924	90	4077	10	-7.1

Calls for Service by Priority and Neighbourhood: January – September 30, 2009

Neighbourhood	Priority 1	Priority 2	Priority 3	Priority 4	Other	Total	% of Total City	% of Grand total
ESQUIMALT VILLAGE	106	267	412	238	1	1024	25.1	2.5
WEST BAY	87	227	466	208		988	24.2	2.4
ROCKHEIGHTS	35	92	162	95	1	385	9.4	0.9
SELKIRK	41	87	148	107	1	384	9.4	0.9
SAXE POINT	23	57	187	108		375	9.2	0.9
DEVONSHIRE	29	66	149	102		346	8.5	0.8
PANHANDLE	25	67	145	70		307	7.5	0.7
COLVILLE	10	26	42	41		119	2.9	0.3
PARKLANDS	18	25	41	35		119	2.9	0.3
DND Base	4	5	9	10		28	0.7	0.1
TANK FARM			2			2	0.0	0.0
TOTAL ESQUIMALT	378	919	1763	1014	3	4077	100.0	9.9
DOWNTOWN	344	1867	3485	2698	5	8399	25.8	23.2
BURNSIDE	341	1076	1980	1290	7	4694	14.4	13.0
NORTH PARK	160	636	2267	1413	10	4486	13.8	12.4
HARRIS GREEN	125	463	994	586	1	2169	6.7	6.0
FAIRFIELD	128	419	837	667	3	2054	6.3	5.7
HILLSIDE QUADRA	175	441	921	457	4	1998	6.1	5.5
FERNWOOD	181	386	883	503	3	1956	6.0	5.4
JAMES BAY	158	441	786	549	1	1935	5.9	5.3
VIC WEST	138	324	699	421	2	1584	4.9	4.4
OAKLANDS	114	275	653	351	3	1396	4.3	3.9
SOUTH JUBILEE	37	150	360	227	0	774	2.4	2.1
GONZALES	13	81	209	122	4	429	1.3	1.2
UNKNOWN	4	14	174	121		313	1.1	1.0
NORTH JUBILEE	39	91	162	57	1	350	1.1	1.0
ROCKLAND	27	54	138	84	0	303	0.9	0.8
TOTAL VICTORIA	1980	6705	14374	9425	44	32528	100.0	89.9
Grand Total	2323	7567	15954	10339	46	36229		

TOP 25 CALLS FOR SERVICE BY NEIGHBOURHOOD: JANUARY - SEPTEMBER 30, 2009

TYPE OF CALL FOR SERVICE	COLVILLE	DEVONSHIRE	DND Base	ESQUIMALT VILLAGE	PANHANDLE	PARKLANDS	ROCKHEIGHTS	SAXE POINT
UNWANTED PERSON	3	8		50	9	1	10	11
THEFT	13	26	2	71	23	13	22	40
ASSIST POLICE/FIRE/AMBULANCE	3	16	2	58	12	9	23	11
PROPERTY	9	10	1	34	7	3	18	16
CHECK WELLBEING	4	10		44	15	6	20	11
DISTURBANCE	7	44		58	15	6	31	28
ASSIST GENERAL PUBLIC	3	9		60	5	6	21	16
SUSPICIOUS PERSON	2	9		24	15	4	13	19
DOMESTIC IN PROGRESS	4	17	2	68	10	10	21	13
ASSIST OTHER AGENCY	2	4	1	21	3	1	2	6
INTOXICATED IN PUBLIC		2	1	20	5	2	5	7
OTHER CRIMINAL CODE	1	6		6	4		8	1
MISCHIEF	2	24	1	37	2	5	20	9
FIGHT	2	8	1	44	4		5	4
SHOPLIFTER		2		25				
DRUGS	2	1	1	9	4		2	3
SUSPICIOUS CIRCUMSTANCES IMPAIRED	5	10	2	21	12	3	7	14
ABANDONED 911	4	7		23	20	5	11	6
ALARM	3	5		21	4	1	8	6
PARKING	5	10	4	20	3	1	3	1
ASSAULT	4	9		15	12	4	9	4
TRAFFIC INCIDENT	2	4		21	6		2	5
BREACH		5		10	14	3	8	2
MAN DOWN		3	1	14	2	2	5	4
MAN DOWN	1	5		13	1	1	3	1
Grand Total	119	346	28	1024	307	119	385	375

TOP 25 CALLS FOR SERVICE BY NEIGHBOURHOOD: JANUARY - SEPTEMBER 30, 2009

TYPE OF CALL FOR SERVICE	SELKIRK	TANK FARM	WEST BAY	BURNSIDE	FAIRFIELD	FERNWOOD	GONZALES	HARRIS GREEN	HILLSIDE QUADRA	JAMES BAY
UNWANTED PERSON	15	2	50	324	158	211	9	427	105	102
THEFT	25		68	382	194	179	37	182	91	167
ASSIST POLICE/FIRE/AMBULANCE	27		64	271	111	113	21	181	116	148
PROPERTY	16		27	235	121	58	30	84	87	137
CHECK WELLBEING	22		52	293	124	104	28	162	105	114
DISTURBANCE	20		96	170	127	202	57	60	153	125
ASSIST GENERAL PUBLIC	14		30	168	74	65	20	54	73	75
SUSPICIOUS PERSON	5		22	165	90	92	14	59	98	82
DOMESTIC IN PROGRESS	29		42	160	61	114	6	51	119	80
ASSIST OTHER AGENCY	3		8	65	22	27	3	14	21	29
INTOXICATED IN PUBLIC	4		12	107	45	46	5	98	25	31
OTHER CRIMINAL CODE	2		8	180	35	18	3	61	52	29
MISCHIEF	16		28	83	70	51	22	54	45	76
FIGHT	6		26	107	24	37	2	48	40	27
SHOPLIFTER	1		9	67	8		3	16	64	25
DRUGS	2		7	72	21	28	1	90	43	11
SUSPICIOUS CIRCUMSTANCES	10		22	128	53	59	17	44	69	56
IMPAIRED	9		37	179	39	21	5	22	70	21
ABANDONED 911	11		12	112	54	48	12	22	55	71
ALARM	4		20	135	34	26	8	27	20	26
PARKING	19		12	45	50	70	8	30	62	46
ASSAULT	5		23	67	25	25	3	34	19	25
TRAFFIC INCIDENT	5		8	114	35	19	5	27	53	31
BREACH	3		11	69	103	21	1	24	18	10
MAN DOWN	2		4	85	36	30	4	55	27	19
Grand Total	384	2	988	5320	2315	2227	491	2431	2299	2191

TOP 25 CALLS FOR SERVICE BY NEIGHBOURHOOD: JANUARY - SEPTEMBER 30, 2009

TYPE OF CALL FOR SERVICE	NORTH JUBILEE	NORTH PARK	OAKLANDS	ROCKLAND	SOUTH JUBILEE	VIC WEST	DOWNTOWN	UNKNOWN	Grand Total
UNWANTED PERSON	14	373	62	20	59	81	883		2987
THEFT	23	158	122	30	42	126	861		2898
ASSIST POLICE/FIRE/AMBULANCE	22	290	57	15	49	95	492		2221
PROPERTY	11	412	80	22	28	77	648		2172
CHECK WELLBEING	34	196	74	16	36	98	405		1976
DISTURBANCE	22	97	161	21	44	94	182		1821
ASSIST GENERAL PUBLIC	13	255	60	8	32	70	306		1437
SUSPICIOUS PERSON	16	101	54	14	18	61	221		1199
DOMESTIC IN PROGRESS	18	78	52	17	11	82	77		1145
ASSIST OTHER AGENCY	7	760	13	2	28	17	79		1142
INTOXICATED IN PUBLIC	4	98	13		36	43	490		1099
OTHER CRIMINAL CODE	2	192	12	2	3	37	346		1019
MISCHIEF	7	69	45	9	26	58	175		935
FIGHT	3	69	19	1	10	24	404		916
SHOPLIFTER		2	70		23	85	504		904
DRUGS	2	258	6	1	4	19	282		869
SUSPICIOUS CIRCUMSTANCES	15	65	41	9	18	48	123		855
IMPAIRED	14	35	46	2	11	34	130	1	752
ABANDONED 911	14	27	32	7	12	48	104		689
ALARM	11	24	19	11	13	17	204		651
PARKING	9	50	39	13	5	26	106		647
ASSAULT	11	64	17	3	15	18	236		632
TRAFFIC INCIDENT	6	70	30	4	10	34	128		624
BREACH	1	76	18	1	7	9	161		565
MAN DOWN	4	62	12	4	6	26	153		555
Grand Total	395	5093	1614	335	882	1802	9526	1	41095