



ARCHIVED - Archiving Content

Archived Content

Information identified as archived is provided for reference, research or recordkeeping purposes. It is not subject to the Government of Canada Web Standards and has not been altered or updated since it was archived. Please contact us to request a format other than those available.

ARCHIVÉE - Contenu archivé

Contenu archivé

L'information dont il est indiqué qu'elle est archivée est fournie à des fins de référence, de recherche ou de tenue de documents. Elle n'est pas assujettie aux normes Web du gouvernement du Canada et elle n'a pas été modifiée ou mise à jour depuis son archivage. Pour obtenir cette information dans un autre format, veuillez communiquer avec nous.

This document is archival in nature and is intended for those who wish to consult archival documents made available from the collection of Public Safety Canada.

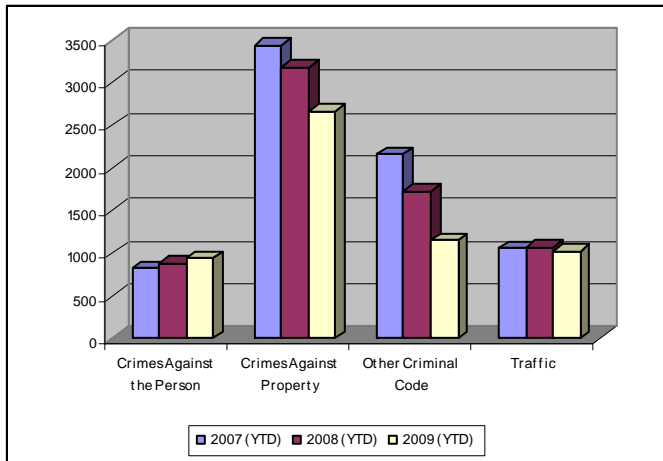
Some of these documents are available in only one official language. Translation, to be provided by Public Safety Canada, is available upon request.

Le présent document a une valeur archivistique et fait partie des documents d'archives rendus disponibles par Sécurité publique Canada à ceux qui souhaitent consulter ces documents issus de sa collection.

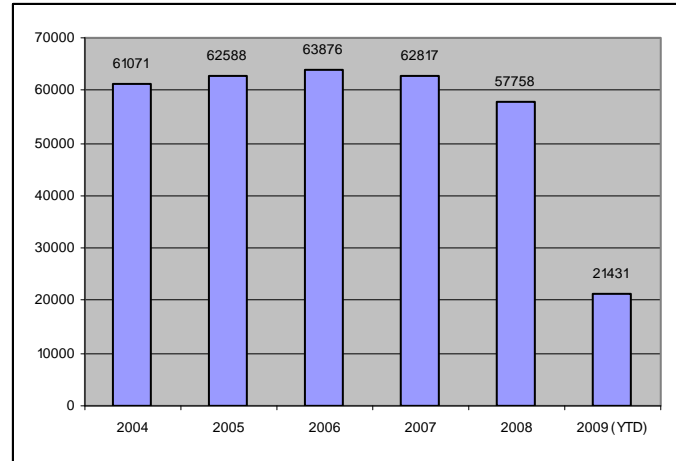
Certains de ces documents ne sont disponibles que dans une langue officielle. Sécurité publique Canada fournira une traduction sur demande.

Crime Trends for Victoria and Esquimalt : January to May 31, 2007 – 2009 (1,2)

Key Crime Trends



Total Calls for Service (Annual)



Key Crime Trends (YTD- January – May 31)

	2007		2008		2009		% Change 2008 - 2009(4)
	Jan - May	Rate (3)	Jan - May	Rate	Jan - May	Rate	
Crime Against the Person	821	859.7	884	925.7	936	980.1	5.9
Crimes Against Property	3443	3605.3	3181	3330.9	2662	2787.5	-16.3
Other Criminal Code of Canada Offences	2165	2267.0	1722	1803.2	1147	1201.1	-33.4
Total CCC Offences Exclud. Traffic	6429	6732.0	5787	6059.7	4745	4968.6	-18.0
Traffic Offences	1062	1112.1	1072	1122.5	1022	1070.2	-4.7
Total CCC Offences and Traffic	7491	7844.1	6859	7182.3	5767	6038.8	-15.9

Notes:

1. The data presented is taken from the Police Records Information Management Environment (PRIME) database. Data that is coded and analyzed according to the requirements of the violation coding structure for Uniform Crime Reporting (UCR) survey as set up by Statistics Canada.
2. The crime statistics published in this report are accurate on the day that they were analyzed. Due to ongoing police investigation and internal data quality control efforts, this information is subject to change, including addition, deletion and reclassification of any and all data. Rates and percentages have been rounded.
3. Rate is calculated on a per 100,000 rate for each month and year. As provided by the City of Victoria, the 2008 and 2009 population was 95,499.
4. The % change is based on the actual values and are subject to (2).

Crimes Against Person (YTD January – May 31)

	2007		2008		2009		% Change 2008 - 2009(4)
	Jan - May	Rate (3)	Jan - May	Rate	Jan - May	Rate	
Homicide	0	0	0	0	1	1.0	-
Attempted Murder	0	0	0	0	0	0	-
Robbery	59	61.8	83	86.9	83	86.9	0.0
Assault	543	568.6	551	577.0	616	645.0	11.8
Sexual Assault	47	49.2	42	44.0	48	50.3	14.3
Criminal Harassment	16	16.8	29	30.4	17	17.8	-41.4
Uttering Threats	153	160.2	177	185.3	171	179.1	-3.4
Arson - Disregard for Life	3	3.1	2	2.1			-100.0

Crimes Against Property (YTD January – May 31)

	2007		2008		2009		% Change 2008 - 2009(4)
	Jan - May	Rate (3)	Jan - May	Rate	Jan - May	Rate	
B&E Business	192	201.0	166	173.8	85	89.0	-48.8
B&E-Other	95	99.5	85	89.0	41	42.9	-51.8
B&E-Residence	302	316.2	355	371.7	142	148.7	-60.0
Fraud	225	235.6	226	236.7	173	181.2	-23.5
Possession of Stolen Property/Break and Enter Tools	133	139.3	108	113.1	72	75.4	-33.3
Theft Over \$5000	13	13.6	13	13.6	14	14.7	7.7
Theft Under \$5000	654	684.8	511	535.1	577	604.2	12.9
Theft from Motor Vehicle	927	970.7	916	959.2	804	841.9	-12.2
Theft of Motor Vehicle	244	255.5	170	178.0	172	180.1	1.2
Take Vehicle without Consent	14	14.7	27	28.3	7	7.3	-74.1
Theft of Bicycle	159	166.5	178	186.4	155	162.3	-12.9
Shoplifting	468	490.1	410	429.3	408	427.2	-0.5
Arson	17	17.8	16	16.8	12	12.6	-25.0

Other Criminal Code Offences (YTD January – May 31)

	2007		2008		2009		% Change 2008 - 2009(4)
	Jan - May	Rate (3)	Jan - May	Rate	Jan - May	Rate	
Bail Violations/Breach of Probation	274	286.9	281	294.2	332	347.6	18.1
Counterfeit Currency	104	108.9	35	36.6	34	35.6	-2.9
Drugs	384	402.1	390	408.4	254	266.0	-34.9
Indecent Acts	21	22.0	20	20.9	36	37.7	80.0
Mischief	686	718.3	914	957.1	761	796.9	-16.7
Offensive Weapons	96	100.5	82	85.9	62	64.9	-24.4

Traffic Offences (YTD January – May 31)

	2007		2008		2009		% Change 2008 - 2009(4)
	Jan - May	Rate (3)	Jan - May	Rate	Jan - May	Rate	
Traffic - Collisions	328	343.5	337	352.9	301	315.2	-10.7
Traffic - Fatal	0	0.0	0	0.0	0	0.0	n/c
Traffic - Other	432	452.4	365	382.2	494	517.3	35.3
Dangerous Operation of Motor Vehicle	13	13.6	36	37.7	4	4.2	-88.9
Fail to Remain	155	162.3	147	153.9	76	79.6	-48.3
Impaired/Refuse	134	140.3	187	195.8	147	153.9	-21.4

Calls For Service (YTD January – May 31)

	2007		2008		2009		% Change 2008 - 2009(4)
	Vic	Esq	Vic	Esq	Vic	Esq	
Priority 1	904	181	1041	178	1129	189	8.12
Priority 2	3705	475	3988	422	3973	472	1
Priority 3	10253	1175	9201	782	8415	854	-7.2
Priority 4	7464	685	6781	564	5524	515	-17.8
Other Alternative	27	3	32	2	2	2	-89
Total - All Priorities	22353	2519	21043	1948	19043	2032	-8.3

Calls For Service by Priority and Neighbourhood: January – May 31, 2009

Neighbourhood	Priority 1	Priority 2	Priority 3	Priority 4	Other	Grand Total
Downtown	190	1089	2118	1619	1	5017
Fairfield	70	234	499	394		1197
Fernwood	107	202	498	302	2	1111
Gonzales	4	53	108	72	2	239
Harris Green	79	291	636	356		1362
Hillside/Quadra	94	270	542	272	1	1179
James Bay	91	250	468	291	1	1101
North Jubilee	21	54	96	38	1	210
North Park	93	393	1332	841	8	2667
Oaklands	68	156	371	216	1	812
Rockland	16	38	78	51		183
South Jubilee	24	95	220	143		482
Vic West	74	180	392	214	1	861
Burnside	199	675	1182	783	1	2840
Total Victoria	1130	3980	8540	5592	19	19261
Colville	5	10	23	23		61
Devonshire	11	28	67	44		150
Esquimalt Village	47	136	193	120	1	497
Panhandle	11	33	72	33		149
Parklands	12	16	14	26		68
Rockheights	16	40	73	49		178
Saxe Point	11	28	105	49		193
Selkirk	22	41	73	58	1	195
West Bay	51	135	225	104		515
Total Esquimalt	186	467	845	506	2	2006
Grand Total	1328	4473	9438	6152	19	21412