



## ARCHIVED - Archiving Content

### Archived Content

Information identified as archived is provided for reference, research or recordkeeping purposes. It is not subject to the Government of Canada Web Standards and has not been altered or updated since it was archived. Please contact us to request a format other than those available.

## ARCHIVÉE - Contenu archivé

### Contenu archivé

L'information dont il est indiqué qu'elle est archivée est fournie à des fins de référence, de recherche ou de tenue de documents. Elle n'est pas assujettie aux normes Web du gouvernement du Canada et elle n'a pas été modifiée ou mise à jour depuis son archivage. Pour obtenir cette information dans un autre format, veuillez communiquer avec nous.

This document is archival in nature and is intended for those who wish to consult archival documents made available from the collection of Public Safety Canada.

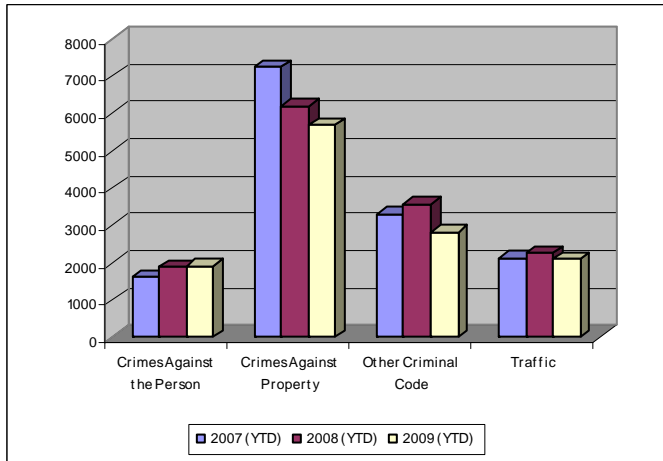
Some of these documents are available in only one official language. Translation, to be provided by Public Safety Canada, is available upon request.

Le présent document a une valeur archivistique et fait partie des documents d'archives rendus disponibles par Sécurité publique Canada à ceux qui souhaitent consulter ces documents issus de sa collection.

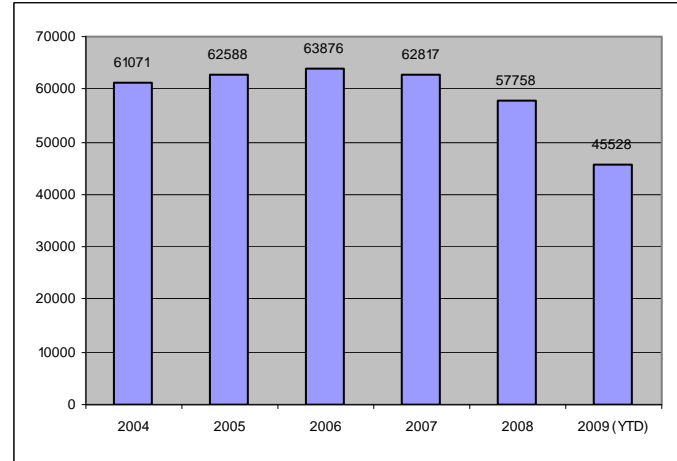
Certains de ces documents ne sont disponibles que dans une langue officielle. Sécurité publique Canada fournira une traduction sur demande.

## Crime Trends for Victoria and Esquimalt : January to October 31, 2007 – 2009 (1,2)

### Key Crime Trends



### Total Calls for Service (Annual)



### Key Crime Trends (YTD- January – October 31)

	2007		2008		2009		% Change 2008 - 2009(4)
	Jan - Oct	Rate (3)	Jan - Oct	Rate	Jan - Oct	Rate	
Crime Against the Person	1620	1696.4	1883	1971.7	1906	1995.8	1.2
Crimes Against Property	7232	7572.9	6197	6489.1	5682	5949.8	-8.3
Other Criminal Code of Canada Offenses	3316	3472.3	3567	3735.1	2826	2959.2	-20.8
Total CCC Offences Exclud. Traffic	12168	12741.5	11647	12195.9	10414	10904.8	-10.6
Traffic Offences	2135	2235.6	2260	2366.5	2085	2183.3	-7.7
Total CCC Offences and Traffic	14303	14977.1	13907	14562.5	12499	13088.1	-10.1

### Notes:

1. The data presented is taken from the Police Records Information Management Environment (PRIME) database. Data that is coded and analyzed according to the requirements of the violation coding structure for Uniform Crime Reporting (UCR) survey as set up by Statistics Canada.
2. The crime statistics published in this report are accurate on the day that they were analyzed. Due to ongoing police investigation and internal data quality control efforts, this information is subject to change, including addition, deletion and reclassification of any and all data. Rates and percentages have been rounded.
3. Rate is calculated on a per 100,000 rate for each month and year. As provided by the City of Victoria, the 2008 and 2009 population was 95,499.
4. The % change is based on the actual values and are subject to (2).

Crimes Against Person (YTD- January – October 31)

	2007		2008		2009		% Change 2008 - 2009(4)
	Jan - Oct	Rate (3)	Jan - Oct	Rate	Jan - Oct	Rate	
Homicide	0	0	1	0	2	2.1	-
Attempted Murder	0	0	2	0	3	3.1	-
Robbery	147	153.9	158	165.4	177	185.3	12.0
Assault	1079	1129.9	1228	1285.9	1283	1343.5	4.5
Sexual Assault	67	70.2	92	96.3	79	82.7	-14.1
Criminal Harassment	26	27.2	59	61.8	45	47.1	-23.7
Uttering Threats	297	311.0	337	352.9	317	331.9	-5.9
Arson - Disregard for Life	4	4.2	5	5.2	1	1.0471	-80.0

Crimes Against Property (YTD- January – October 31)

	2007		2008		2009		% Change 2008 - 2009(4)
	Jan - Oct	Rate (3)	Jan - Oct	Rate	Jan - Oct	Rate	
B&E Business	423	442.9	300	314.1	196	205.2	-34.7
B&E-Other	188	196.9	219	229.3	126	131.9	-42.5
B&E-Residence	566	592.7	587	614.7	346	362.3	-41.1
Fraud	448	469.1	424	444.0	346	362.3	-18.4
Possession of Stolen Property/Break and Enter Tools	287	300.5	185	193.7	158	165.4	-14.6
Theft Over \$5000	22	23.0	23	24.1	29	30.4	26.1
Theft Under \$5000	1242	1300.5	1058	1107.9	1139	1192.7	7.7
Theft from Motor Vehicle	2203	2306.8	1715	1795.8	1568	1641.9	-8.6
Theft of Motor Vehicle	428	448.2	383	401.1	343	359.2	-10.4
Take Vehicle without Consent	28	29.3	37	38.7	20	20.9	-45.9
Theft of Bicycle	439	459.7	395	413.6	355	371.7	-10.1
Shoplifting	918	961.3	836	875.4	883	924.6	5.6
Arson	39	40.8	35	36.6	30	31.4	-14.3

Other Criminal Code Offences (YTD January – October 31)

	2007		2008		2009		% Change 2008 - 2009(4)
	Jan - Oct	Rate (3)	Jan - Oct	Rate	Jan - Oct	Rate	
Bail Violations/Breach of Probation	697	729.9	583	610.5	543	568.6	-6.9
Counterfeit Currency	168	175.9	99	103.7	77	80.6	-22.2
Drugs	764	800.0	778	814.7	549	574.9	-29.4
Indecent Acts	52	54.5	33	34.6	71	74.3	115.2
Mischief	1462	1530.9	1915	2005.3	1438	1505.8	-24.9
Offensive Weapons	166	173.8	155	162.3	148	155.0	-4.5

Traffic Offences (YTD January – October 31)

	2007		2008		2009		% Change 2008 - 2009(4)
	Jan - Oct	Rate (3)	Jan - Oct	Rate	Jan - Oct	Rate	
Traffic - Collisions	726	760.2	703	736.1	703	736.1	0.0
Traffic - Fatal	1	1.0	1	1.0	2	2.1	n/c
Traffic - Other	849	889.0	836	875.4	838	877.5	0.2
Dangerous Operation of Motor Vehicle	21	22.0	79	82.7	42	44.0	-46.8
Fail to Remain	321	336.1	309	323.6	185	193.7	-40.1
Impaired/Refuse	217	227.2	333	348.7	315	329.8	-5.4

Calls fro Service (YTD January – October 31)

	2007				2008				2009				% Change '08- '09(4)
	Vic	% of Total	Esq	% of Total	Vic	% of Total	Esq	% of Total	Vic	% of Total	Esq	% of Total	
<b>Priority 1:</b> Emergency, dispatch immediate, high probability of death or grievous bodily harm	1828	83.9	350	16	1954	85.7	327	14.3	2260	85.7	378	14.3	15.7
<b>Priority 2:</b> Urgent, dispatch immediate, not life threatening in nature	7574	88.6	973	11.4	7539	89.9	844	10.1	7602	89.2	919	10.8	1.6
<b>Priority 3:</b> Routine: non-urgent	18890	89.8	2148	10.2	17763	91.9	1562	8.1	16249	90.2	1763	9.8	-6.8
<b>Priority 4:</b> May or may not be dispatched, dependant on agency	14836	92	1289	8	13051	92.6	1043	7.5	10763	91.4	1014	8.6	-16.4
Other Alternative	55	88.7	7	11.3	49	89.1	6	10.9	50	94.3	3	5.7	-3.6
Total - All Priorities	43183	90	4767	10.2	40356	91.4	3782	8.6	36924	90	4077	10	-7.1

## Calls for Service by Priority and Neighbourhood: January – October 31, 2009

<i>Neighbourhood</i>	<i>Priority 1</i>	<i>Priority 2</i>	<i>Priority 3</i>	<i>Priority 4</i>	<i>Other</i>	<i>Total</i>	<i>% of Total City</i>	<i>% of Grand Total</i>
ESQUIMALT VILLAGE	113	287	465	266	1	1132	25.2	2.5
WEST BAY	99	256	501	227	0	1083	24.1	2.4
ROCKHEIGHTS	43	98	175	100	1	417	9.3	0.9
SELKIRK	46	99	160	120	1	426	9.5	0.9
SAXE POINT	25	61	206	116		408	9.1	0.9
DEVONSHIRE	35	71	161	118		385	8.6	0.8
PANHANDLE	29	78	162	78		347	7.7	0.8
COLVILLE	10	29	54	43		136	3.0	0.3
PARKLANDS	22	29	44	36		131	2.9	0.3
DND Base	4	5	10	10		29	0.6	0.1
TANK FARM			2			2	0.0	0.0
<b>TOTAL ESQUIMALT</b>	<b>426</b>	<b>1013</b>	<b>1940</b>	<b>1114</b>	<b>3</b>	<b>4496</b>	<b>100.0</b>	<b>9.9</b>
DOWNTOWN	453	2372	4360	3414	6	10604	25.9	23.4
BURNSIDE	432	1334	2453	1623	10	5852	14.3	12.9
NORTH PARK	205	780	2848	1776	11	5620	13.7	12.4
HARRIS GREEN	159	578	1208	738	2	2685	6.6	5.9
FAIRFIELD	168	512	1039	853	3	2575	6.3	5.7
HILLSIDE QUADRA	237	568	1114	609	5	2533	6.2	5.6
FERNWOOD	210	497	1123	660	4	2494	6.1	5.5
JAMES BAY	188	547	992	716	2	2445	6.0	5.4
VIC WEST	167	416	877	531	2	1993	4.9	4.4
OAKLANDS	150	354	810	468	3	1785	4.4	3.9
SOUTH JUBILEE	48	183	445	286		962	2.4	2.1
GONZALES	22	95	260	155	4	536	1.3	1.2
UNKNOWN	4	14	174	121		313	1.1	1.0
NORTH JUBILEE	43	112	204	80	1	440	1.1	1.0
ROCKLAND	30	66	168	116		380	0.9	0.8
<b>TOTAL VICTORIA</b>	<b>2512</b>	<b>8414</b>	<b>17901</b>	<b>12025</b>	<b>53</b>	<b>40905</b>	<b>100.0</b>	<b>90.1</b>
<b>Grand Total</b>	<b>2938</b>	<b>9427</b>	<b>19841</b>	<b>13139</b>	<b>56</b>	<b>45401</b>		

**TOP 25 CALLS FOR SERVICE BY NEIGHBOURHOOD: JANUARY – OCTOBER 31, 2009**

TYPE OF CALL FOR SERVICE	COLVILLE	DEVONSHIRE	DND Base	ESQUIMALT VILLAGE	PANHANDLE	PARKLANDS	ROCKHEIGHTS	SAXE POINT
THEFT	13	30	2	84	28	15	27	44
UNWANTED PERSON	5	8		53	10	1	10	12
SUSPICIOUS CIRCUMSTANCES	12	28	3	58	36	8	22	41
ASSIST POLICE/FIRE/AMBULANCE	4	16	2	64	13	9	25	12
PROPERTY	10	11	1	38	7	3	21	17
CHECK WELLBEING	8	11		51	16	8	21	12
DISTURBANCE	8	45		62	16	7	33	30
ASSIST GENERAL PUBLIC	3	13		67	6	6	23	17
MISCHIEF	4	32	1	51	8	7	32	16
DOMESTIC	4	20	2	75	17	13	25	16
INTOXICATED IN PUBLIC		2	1	23	5	2	7	7
ASSIST OTHER AGENCY	2	4	1	23	3	1	2	6
OTHER CRIMINAL CODE	1	6		8	6		8	1
ASSAULT	3	8		33	10		4	7
FIGHT	2	10	1	44	6		5	4
SHOPLIFTER		3		26				
DRUGS	2	1	1	9	4		2	3
BREAK AND ENTER	5	16		20	6	1	6	16
IMPAIRED	5	7		26	22	6	11	7
ABANDONED 911	3	6		23	4	2	8	7
ALARM	6	10	4	25	3	1	5	1
PARKING	4	9		21	14	4	9	5
TRAFFIC INCIDENT	1	6		11	18	3	9	2
MVI	5	3		11	15		9	1
BREACH		3	1	14	2	2	5	4
<b>TOTAL</b>	<b>136</b>	<b>385</b>	<b>29</b>	<b>1132</b>	<b>347</b>	<b>131</b>	<b>417</b>	<b>408</b>

**TOP 25 CALLS FOR SERVICE BY NEIGHBOURHOOD: JANUARY – OCTOBER 31, 2009**

TYPE OF CALL FOR SERVICE	SELKIRK	TANK FARM	WEST BAY	BURNSIDE	FAIRFIELD	FERNWOOD	GONZALES	HARRIS GREEN	HILLSIDE QUADRA	JAMES BAY
THEFT	28		79	493	240	210	42	243	136	214
UNWANTED PERSON	15	2	54	356	174	235	10	462	114	120
SUSPICIOUS CIRCUMSTANCES	23		57	378	186	188	35	120	213	171
ASSIST POLICE/FIRE/AMBULANCE	32		68	287	129	131	22	194	126	161
PROPERTY	18		30	253	138	65	31	101	92	154
CHECK WELLBEING	23		58	313	136	112	33	178	110	128
DISTURBANCE	25		100	186	148	226	59	66	169	133
ASSIST GENERAL PUBLIC	15		33	190	82	77	21	62	75	86
MISCHIEF	29		41	135	109	81	36	83	78	108
DOMESTIC	34		50	184	75	132	9	62	149	91
INTOXICATED IN PUBLIC	7		13	120	50	53	5	116	29	35
ASSIST OTHER AGENCY	3		8	68	24	30	3	17	21	32
OTHER CRIMINAL CODE	2		9	199	37	21	3	70	56	31
ASSAULT	7		35	124	37	42	6	61	36	36
FIGHT	6		29	117	27	38	2	56	43	28
SHOPLIFTER	1		9	76	8	1	3	19	65	28
DRUGS	2		7	75	23	35	1	94	47	14
BREAK AND ENTER	13		23	122	66	87	21	44	67	79
IMPAIRED	9		46	201	39	24	5	24	77	22
ABANDONED 911	12		15	125	60	53	12	24	61	77
ALARM	5		21	153	38	29	8	35	21	29
PARKING	20		14	51	54	86	10	32	67	53
TRAFFIC INCIDENT	6		9	126	36	22	6	32	58	37
MVI	6		8	121	42	33	4	33	55	26
BREACH	4		13	80	109	22	2	27	20	13
<b>Grand Total</b>	<b>426</b>	<b>2</b>	<b>1083</b>	<b>5852</b>	<b>2575</b>	<b>2494</b>	<b>536</b>	<b>2685</b>	<b>2533</b>	<b>2445</b>

**TOP 25 CALLS FOR SERVICE BY NEIGHBOURHOOD: JANUARY – OCTOBER 31, 2009**

TYPE OF CALL FOR SERVICE	NORTH JUBILEE	NORTH PARK	OAKLANDS	ROCKLAND	SOUTH JUBILEE	VIC WEST	DOWNTOWN	UNKNOWN	Grand Total
THEFT	29	201	152	39	62	143	1114	3673	29
UNWANTED PERSON	14	422	65	22	63	87	983	3298	14
SUSPICIOUS CIRCUMSTANCES	33	211	125	29	46	155	401	2586	33
ASSIST POLICE/FIRE/AMBULANCE	25	315	61	17	54	105	547	2435	25
PROPERTY	12	456	89	23	29	78	732	2410	12
CHECK WELLBEING	37	222	79	21	39	107	442	2168	37
DISTURBANCE	24	106	174	22	47	103	201	1991	24
ASSIST GENERAL PUBLIC	16	281	69	9	33	79	338	1602	16
MISCHIEF	14	110	65	10	44	91	287	1473	14
DOMESTIC	21	91	64	22	17	102	88	1368	21
INTOXICATED IN PUBLIC	7	111	13		40	46	551	1243	7
ASSIST OTHER AGENCY	10	778	17	3	28	19	91	1199	10
OTHER CRIMINAL CODE	2	225	13	2	3	40	376	1132	2
ASSAULT	14	98	23	3	21	32	386	1030	14
FIGHT	3	75	24	1	11	27	462	1022	3
SHOPLIFTER		4	73		27	89	582	1014	
DRUGS	2	272	8	1	4	21	300	928	2
BREAK AND ENTER	15	44	38	8	11	51	108	873	15
IMPAIRED	15	38	53	2	11	39	149	839	15
ABANDONED 911	15	28	38	8	13	54	120	768	15
ALARM	12	27	20	12	14	20	227	732	12
PARKING	9	55	44	19	6	27	110	723	9
TRAFFIC INCIDENT	6	78	33	4	10	37	147	700	6
MVI	15	39	48	5	16	37	78	612	15
BREACH	1	80	19	2	8	10	166	608	1
<b>Grand Total</b>	<b>440</b>	<b>5620</b>	<b>1785</b>	<b>380</b>	<b>962</b>	<b>1993</b>	<b>10604</b>	<b>45514</b>	<b>440</b>